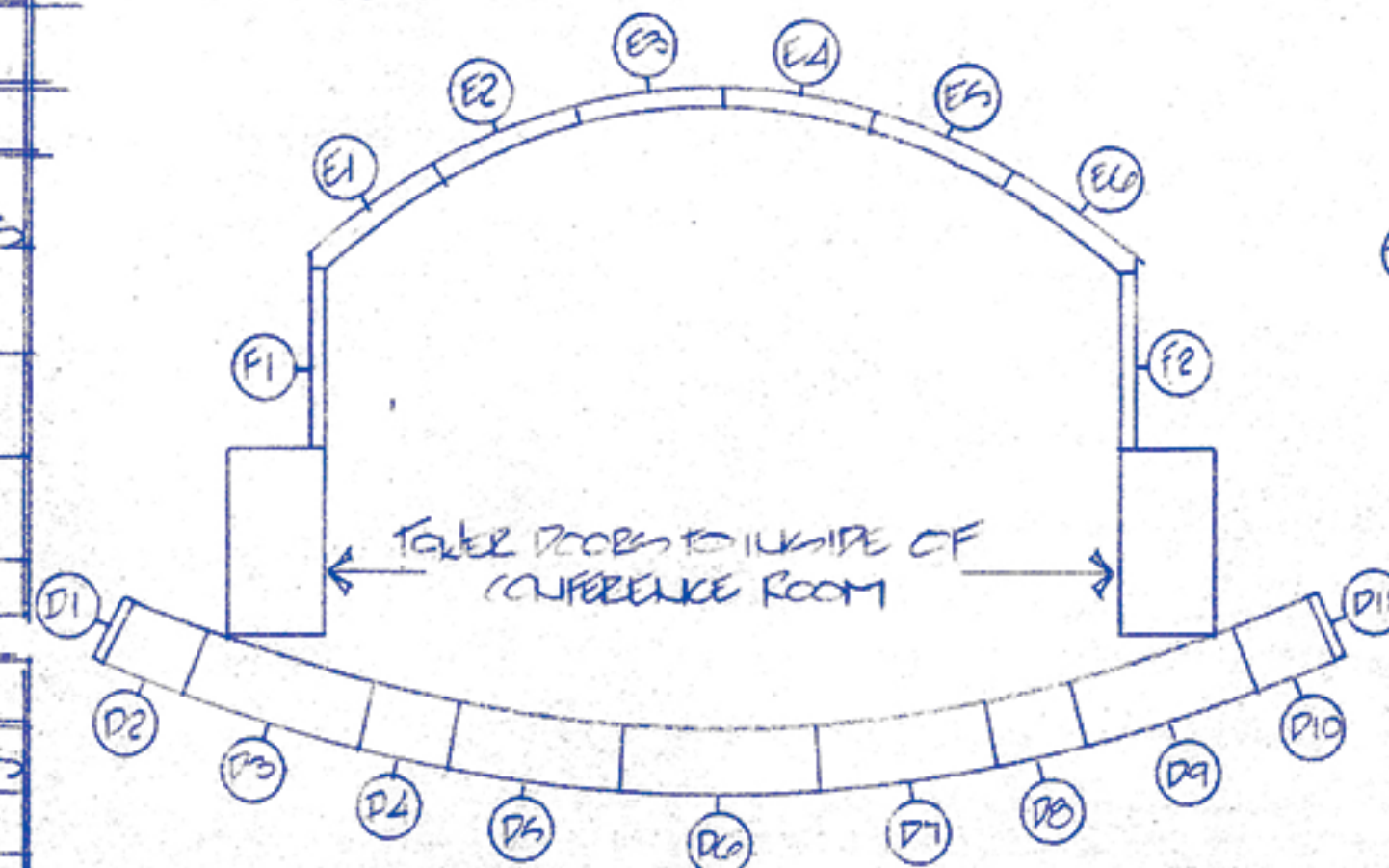
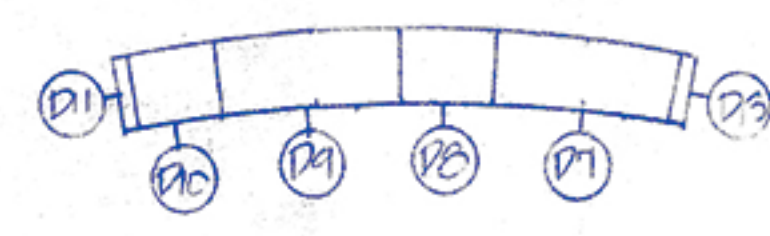


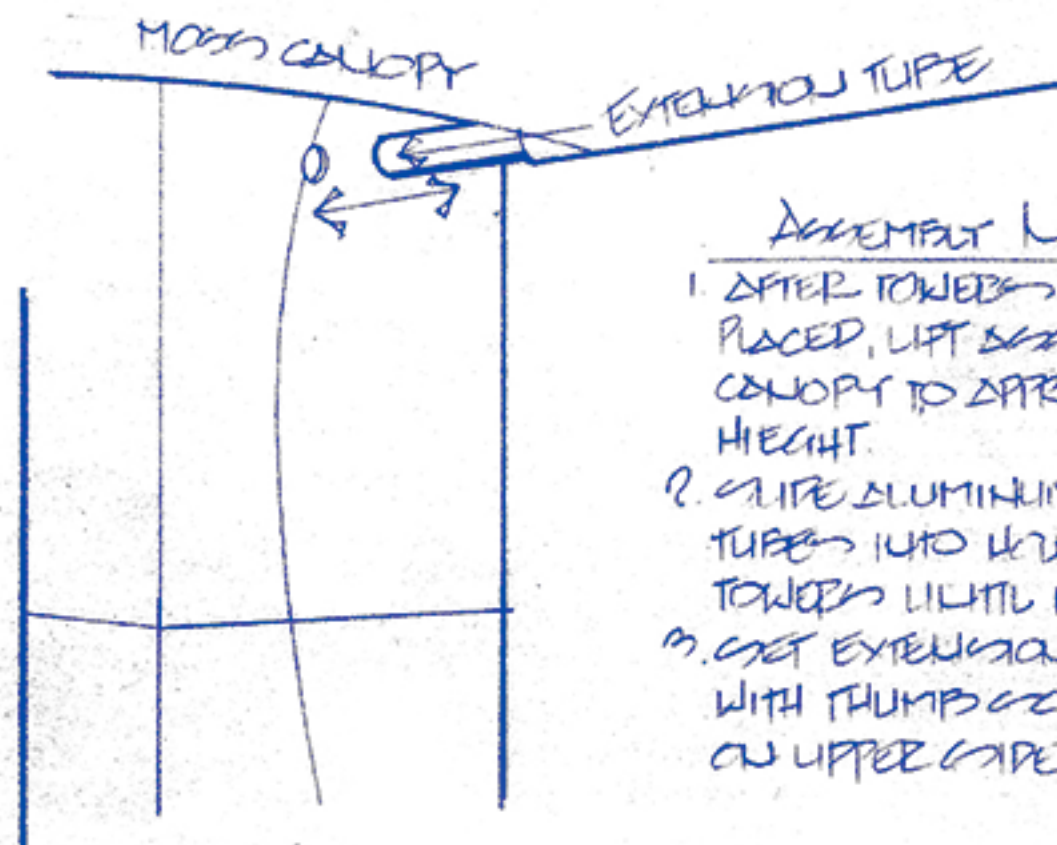
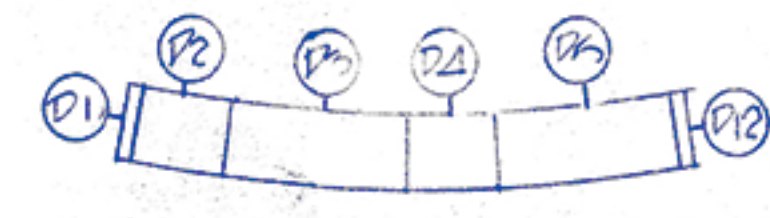
PUSH VIEW  
BACK WALLS 10'x10'



PLAN VIEW  
CONFERENCE AREA 20'x40'



PUSH VIEW  
CONFERENCE AREA 20'x40'

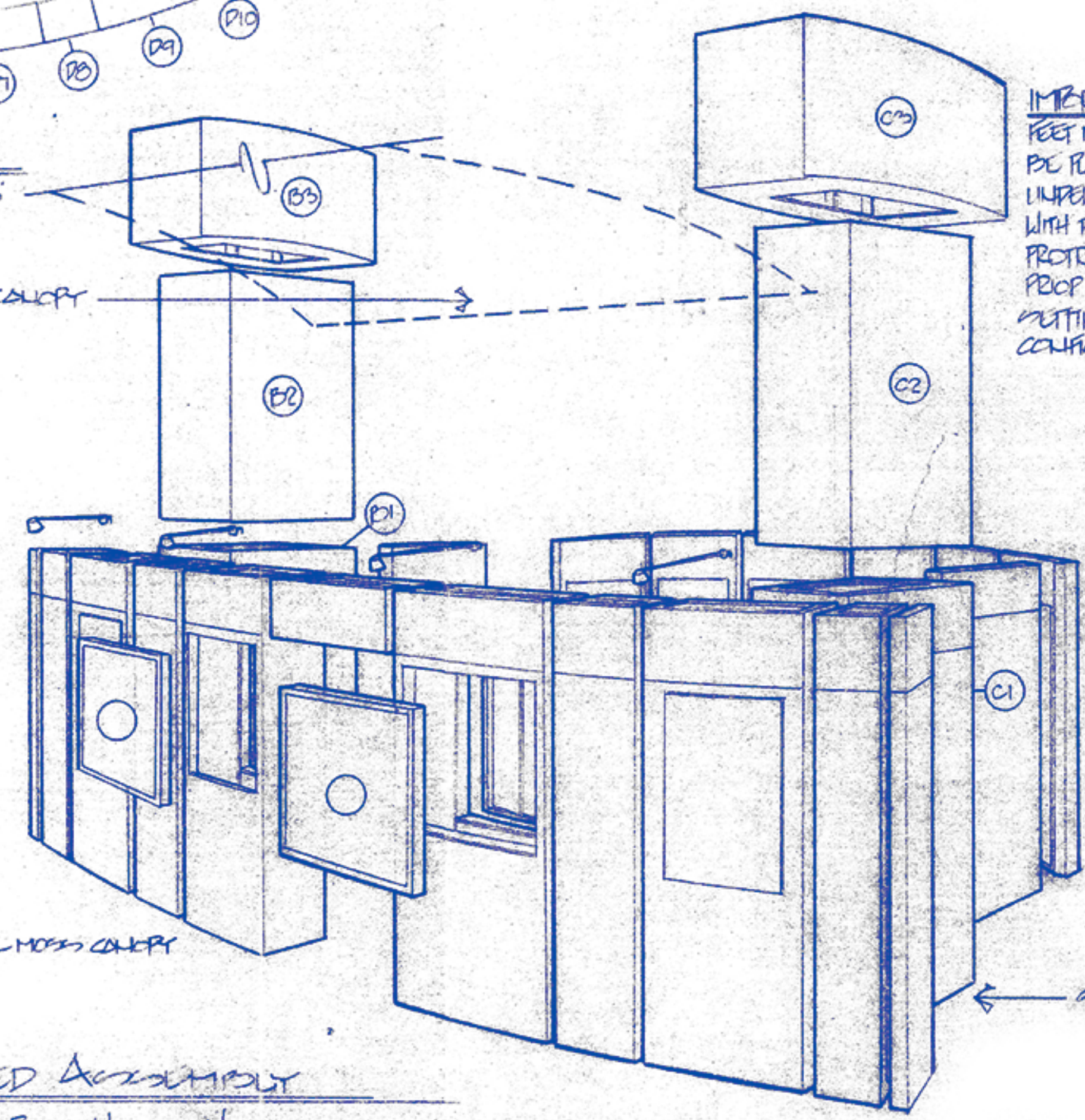


- ASSEMBLY NOTES
1. AFTER TOWERS HAVE BEEN PLACED, LIFT ASSEMBLED CANOPY TO APPROPRIATE HEIGHT.
  2. SLIDE ALUMINUM EXTENSION TUBES INTO HOLES IN TOWERS UNTIL IT STOPS.
  3. GET EXTENSION TUBE WITH THUMB SCREW LOCATED ON UPPER EDGE OF CANOPY.

HARDWARE SCHEDULE	
QTY	TYPE
25	2" x 1/4" x 20 BUTTON HEAD BRASS PANEL BOLTS
20	2" x 1/4" x 20 MARRONSHI BOLTS
20	1/2" x 20 FEMALE MARRONSHI BOLTS
25	2" x 1/4" x 20 CARTRIDGE BOLTS
20	1/2" x 20 WING NUTS

LAMP SCHEDULE	
QTY	TYPE
4	POW HANGING CANS
4	POW TRILCO HANGING



**IMPORTANT!**  
FEET MUST BE PLACED UNDER CARPET WITH FEET PROTRUDING FROM TO GETTING 20'x40' CONFIGURATION

NOTE:  
CONFERENCE ROOM WALLS (P1 AND P2) GET IN THIS MANNER FOR 40'x40' CONFIG. ONLY, SEE FLOOR PLANS FOR ALTERNATE CONFIGURATIONS

DETAIL  
SUPPORT FEET

SEE DETAIL FOR SUPPORT FEET

INSTALL MOSS CANOPY

EXPLODED ASSEMBLY  
CONFERENCE ROOM WALLS & CONTACT TOWERS

ASSEMBLY INSTRUCTIONS

1. POSITION TOWER BASES C1 AND B1 AS PER FLOOR PLAN. NOTE: IF GETTING 20'x40' CONFIGURATION, BE SURE SUPPORT FEET ARE PLACED PROPERLY UNDER CARPET. SEE PAGE 2A.
2. PUT BOLTS F1 AND F2 TO TOWER BASES WITH ONE 2" x 1/4" x 20 CARTRIDGE BOLT AND WING NUT.
3. CAMLOCK PLY PANELS E1 AND E2 TO F WALLS.
4. ATTACH REMAINING E WALLS IN SEQUENCE WITH MALE AND FEMALE MARRONSHI BOLTS (1 PER WALL) AND CAMLOCKS AT TOP.
5. BOLT TOWER MID SECTIONS TO BASES WITH ONE 2" x 1/4" x 20 CARTRIDGE BOLT AND WING NUT.
6. BOLT BACK UP HEADERS TO MID SECTIONS WITH ONE 2" x 1/4" x 20 CARTRIDGE BOLT AND WING NUT.
7. CAMLOCK D WALLS TOGETHER IN SEQUENCE. BE SURE TO CONNECT ALL POWER I.E. DIMMER, PERIMETER PANELS, ETC. AS WALLS ARE ASSEMBLED.
8. INSTALL PRODUCT DISPLAY PANELS TO D WALLS WITH ONE 2" x 1/4" x 20 BUTTON HEAD BRASS PANEL BOLT, ACCESS PRODUCT PANELS VIA ACCESS PANEL ON REVERSE SIDE.