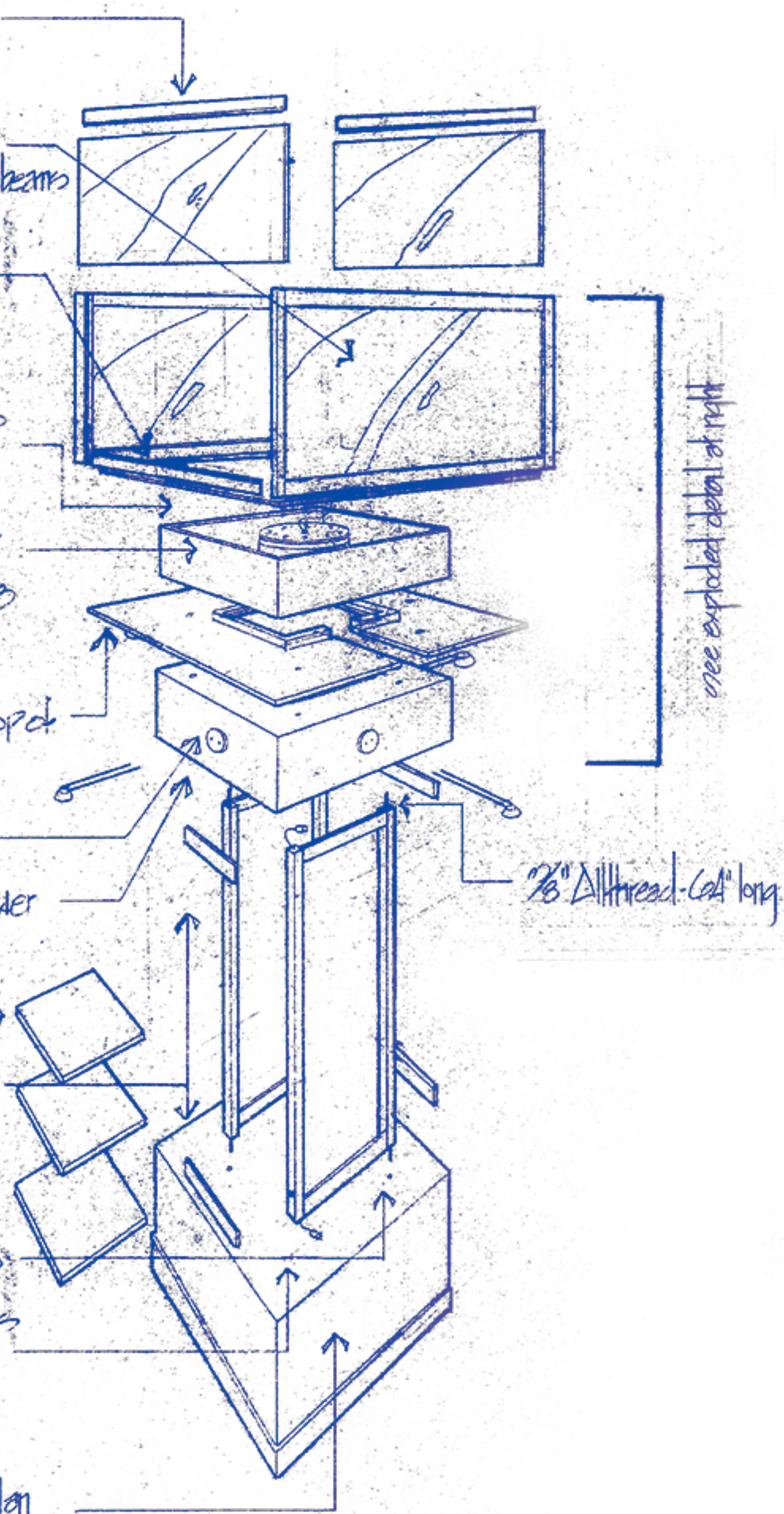
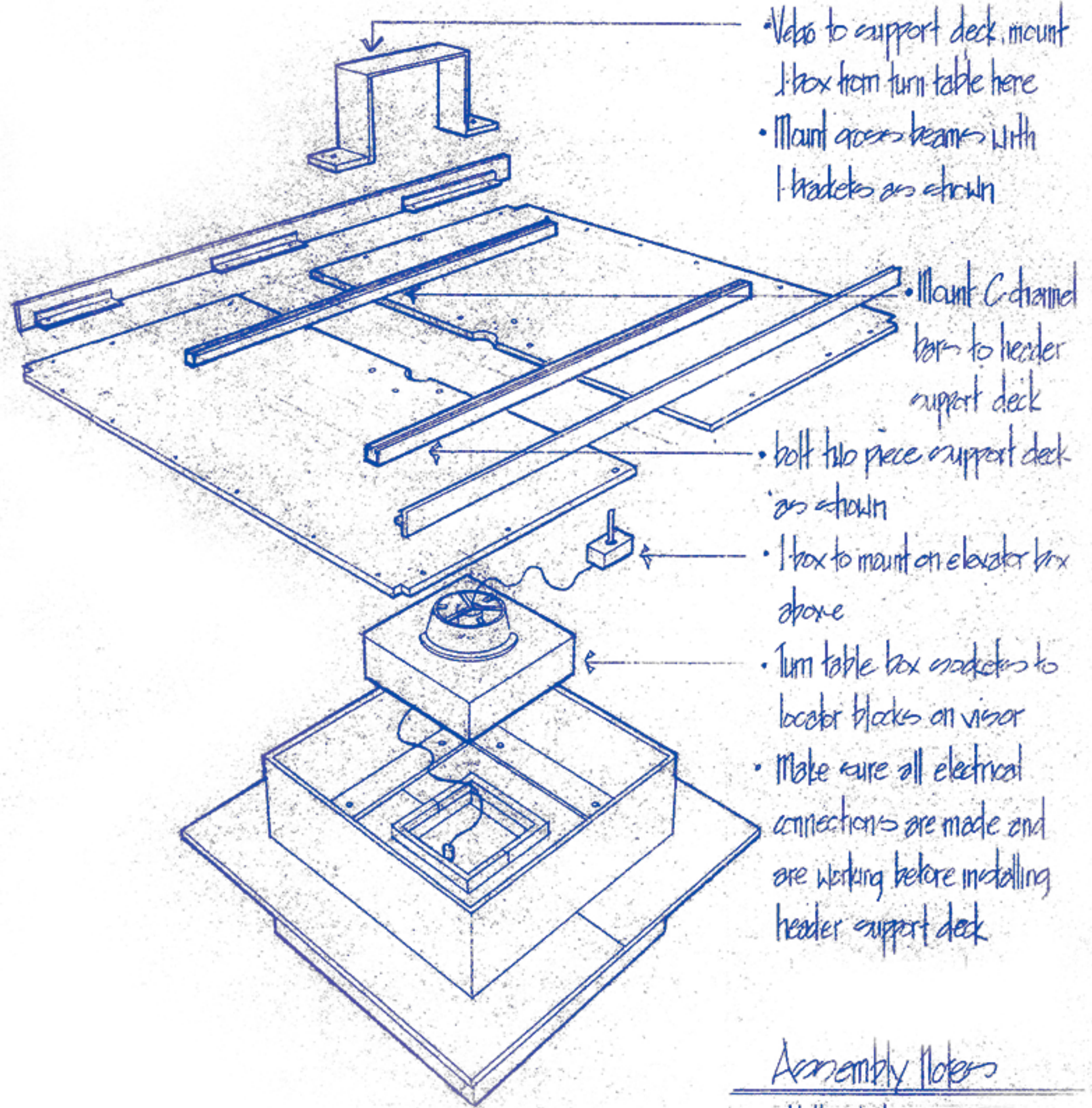


Assembly for towers #1 and #2

- Slide in graphic panels and attach octanorm cross beams
- Bolt octanorm panels to support deck and lock to octanorm cross beams
- Bolt octanorm cross beam to support deck
- Bolt two piece support deck to turn table motor
- Position header box and thru bolt visor and two header boxes in 8 places
- Position two piece visor on top of header box
- Plug in electrical for lights
- Bolt header box to octanorm tower with all thread and $\frac{3}{8}$ " hex nuts
- Insert shelves next
- Attach octanorm cross beams top and bottom
- Bolt octanorm frames to base from below with two $\frac{3}{8}$ " hex nuts
- Make sure cord in post passes thru base and header box
- Position base as per floor plan



Assembly Notes
read bottom to top



Assembly Notes
read bottom to top