

NOTE HOW 1" CONDUIT ASSEMBLY SHOULD TRACK 5" IN BOTH DIRECTIONS FROM CENTER POSITION

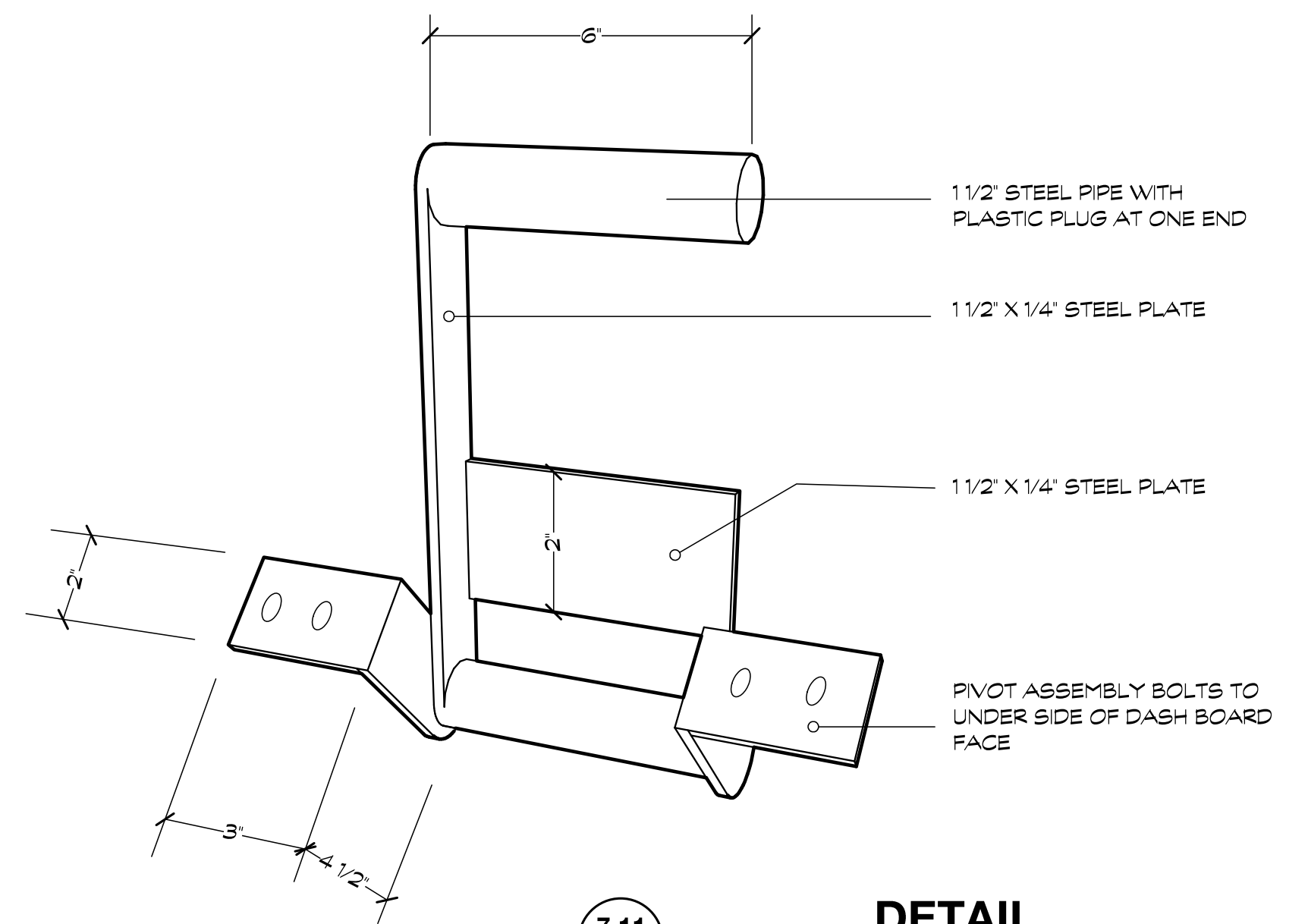
SLIDE AND SLIDE RAIL

SLIDE AND SLIDE RAIL

JUNCTION BOX WITH LIGHT FIXTURE MOUNTED TO END OF 1" CONDUIT

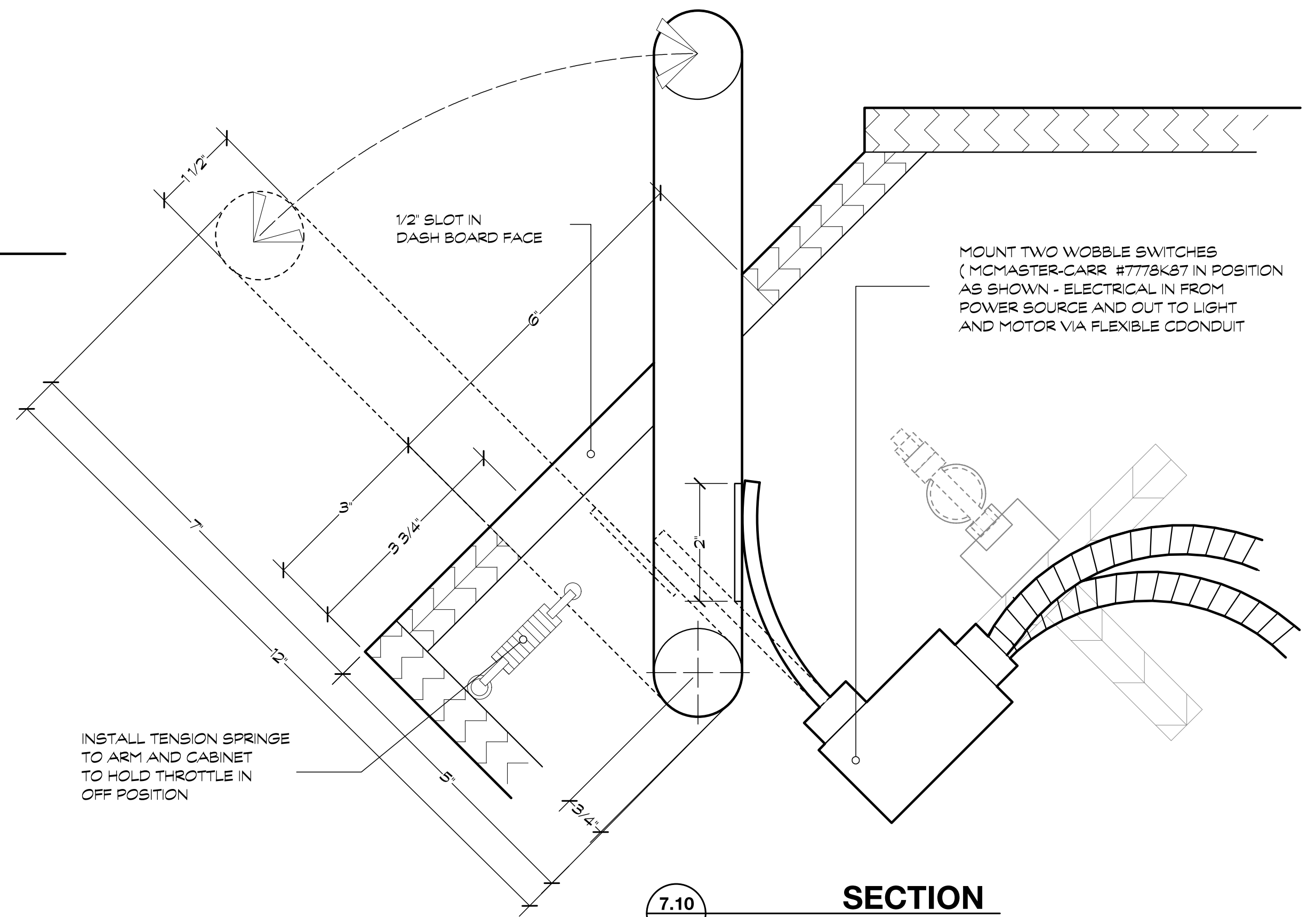
7.9  
VAL

**SECTION**  
SCALE: 1 1/2" = 1'-0"



7.11  
VAL

**DETAIL**  
NOT TO SCALE



INSTALL TENSION SPRING TO ARM AND CABINET TO HOLD THROTTLE IN OFF POSITION

1/2" SLOT IN DASH BOARD FACE

MOUNT TWO WOBBLE SWITCHES (MCMMASTER-CARR #7778K87 IN POSITION AS SHOWN - ELECTRICAL IN FROM POWER SOURCE AND OUT TO LIGHT AND MOTOR VIA FLEXIBLE CONDUIT

7.10  
VAL

**SECTION**  
HALF ACTUAL