

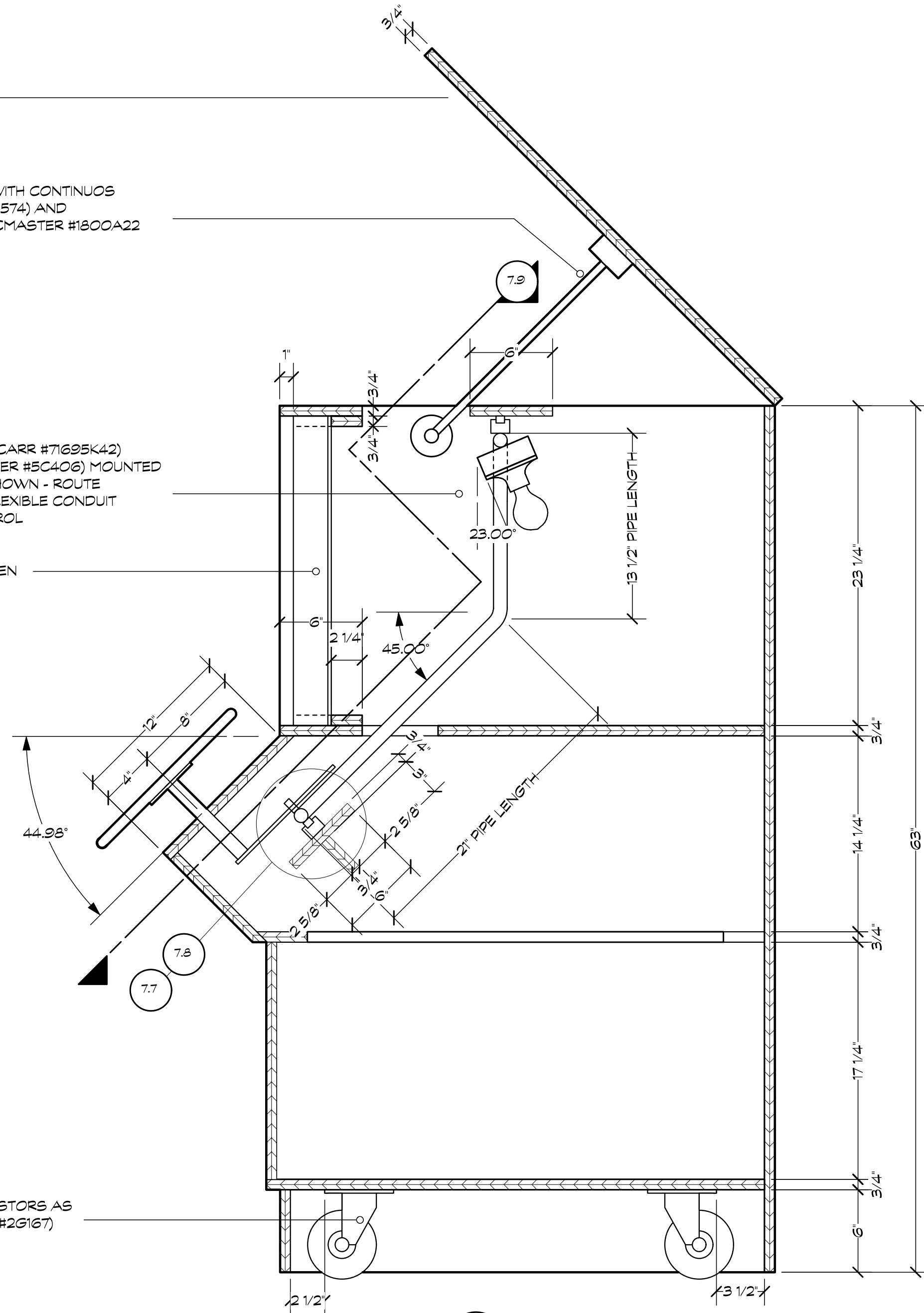
TILT UP LID

MOUNT TILT UP LID WITH CONTINUOUS HINGE (GRAINGER 3J574) AND FRICTION SLIDES (MCMaster #1800A22 AND #1800A23)

J- BOX (MCMaster-CARR #71695K42) AND FIXTURE (GRAINGER #5C406) MOUNTED TO 1" CONDUIT AS SHOWN - ROUTE ELECTRICAL THRU FLEXIBLE CONDUIT TO THROTTLE CONTROL

FACE OF PLEX SCREEN

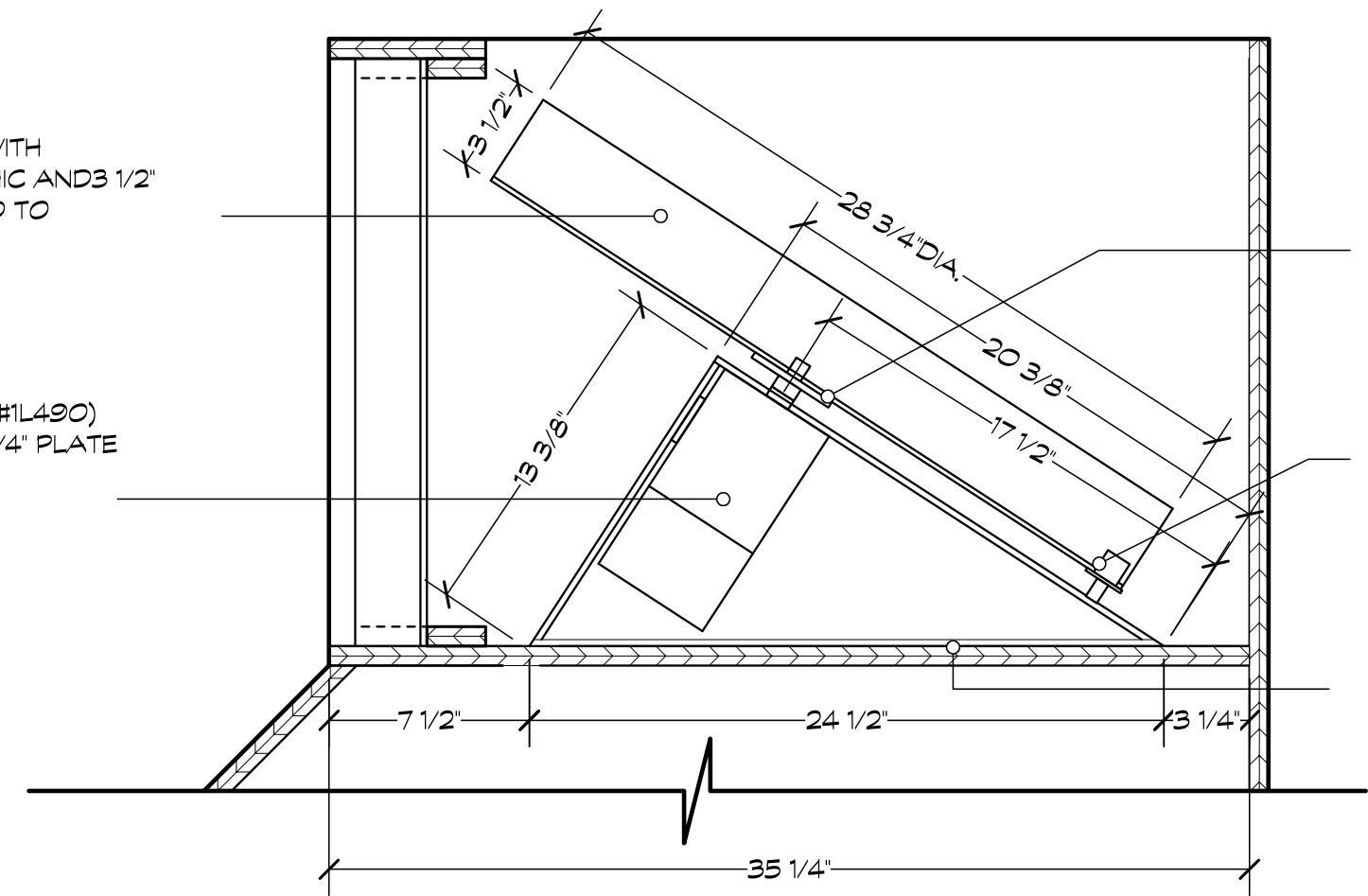
RECESS SWIVEL CASTORS AS SHOWN (GRAINGER #2G167)



7.5
VAL SECTION
SCALE: 1 1/2" = 1'-0"

1/4" PLEXIGLASS WHEEL WITH SECOND SURFACE GRAPHIC AND 3/2" LEXAN GRAPHIC MOUNTED TO EDGE AS SHOWN

GRAINGER GEAR MOTOR (#1L490) AT 2 R.P.M. MOUNTED TO 1/4" PLATE STEEL MOTOR BRACKET



7.6
VAL SECTION
SCALE: 1 1/2" = 1'-0"

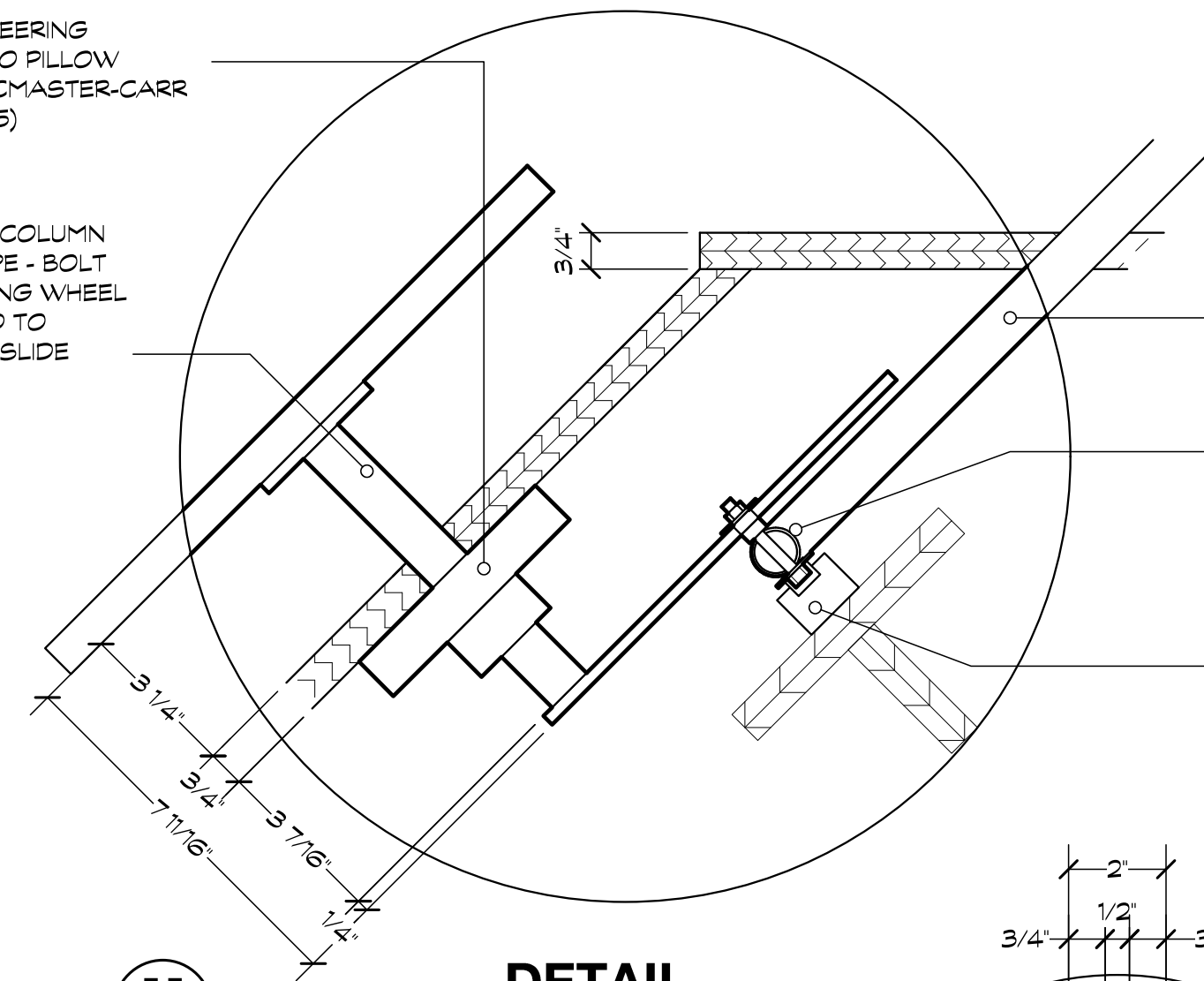
MOUNT MOTOR SHAFT TO PLEX WHEEL USING STEE FLANGE (MCMaster-CARR #4464K341)

SUPPORT LOWER LEDGE OF PLEX WHEEL WITH NYLON SKATES (MCMaster-CARR #9960T3) QTY.2

BOLT MOTOR BRACKET TO PLYWOOD DECK

MOUNT STEERING COLUMN TO PILLOW BLOCK (MCMaster-CARR #58845K45)

STEERING COLUMN FROM 1" PIPE - BOLT TO STEERING WHEEL AND WELD TO 1/4" STEEL SLIDE BRACKET



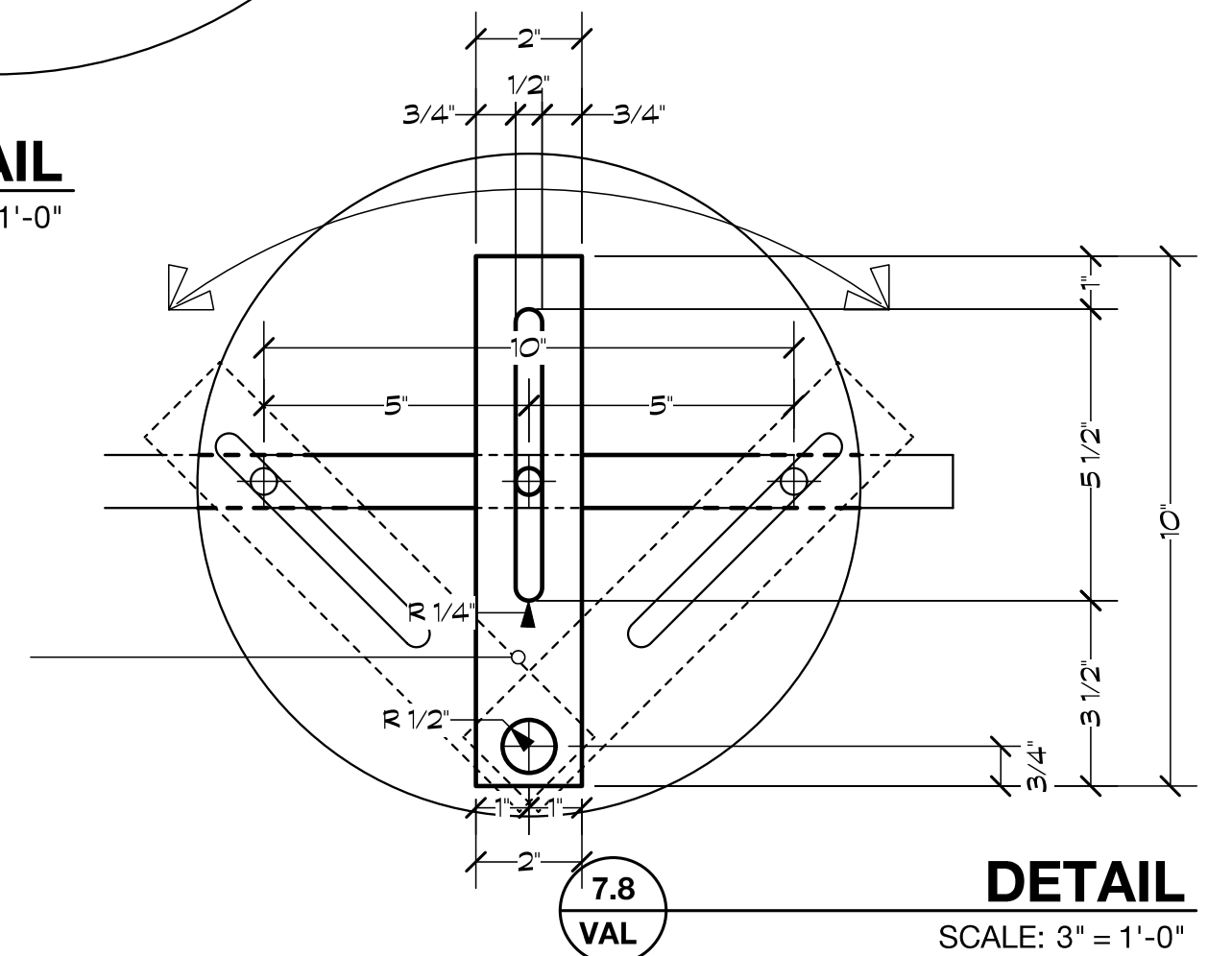
7.7
VAL DETAIL
SCALE: 3" = 1'-0"

1" CONDUIT (MCMaster-CARR #7385K63)

CONNECT TO STEERING WHEEL ARM USING 1/4"/20 BOLT, 1" FENDER WASHERS AND TWO BEARINGS (MCMaster-CARR #57155K68)

SLIDE (MCMaster-CARR #6250K21) AND SLIDE RAIL (MCMaster-CARR #6250K26) MOUNTED TO PLYWOOD RIBBING AS SHOWN - MOUNT SLIDE TO 1" CONDUIT

2" X 10" X 1/4" STEEL BRACKET WITH SLOT FOR TRACKING 1" CONDUIT IN LINEAR MOTION - WED TO STEERING COLUMN



7.8
VAL DETAIL
SCALE: 3" = 1'-0"