



CHIARAPERROT®
MADE IN ITALY

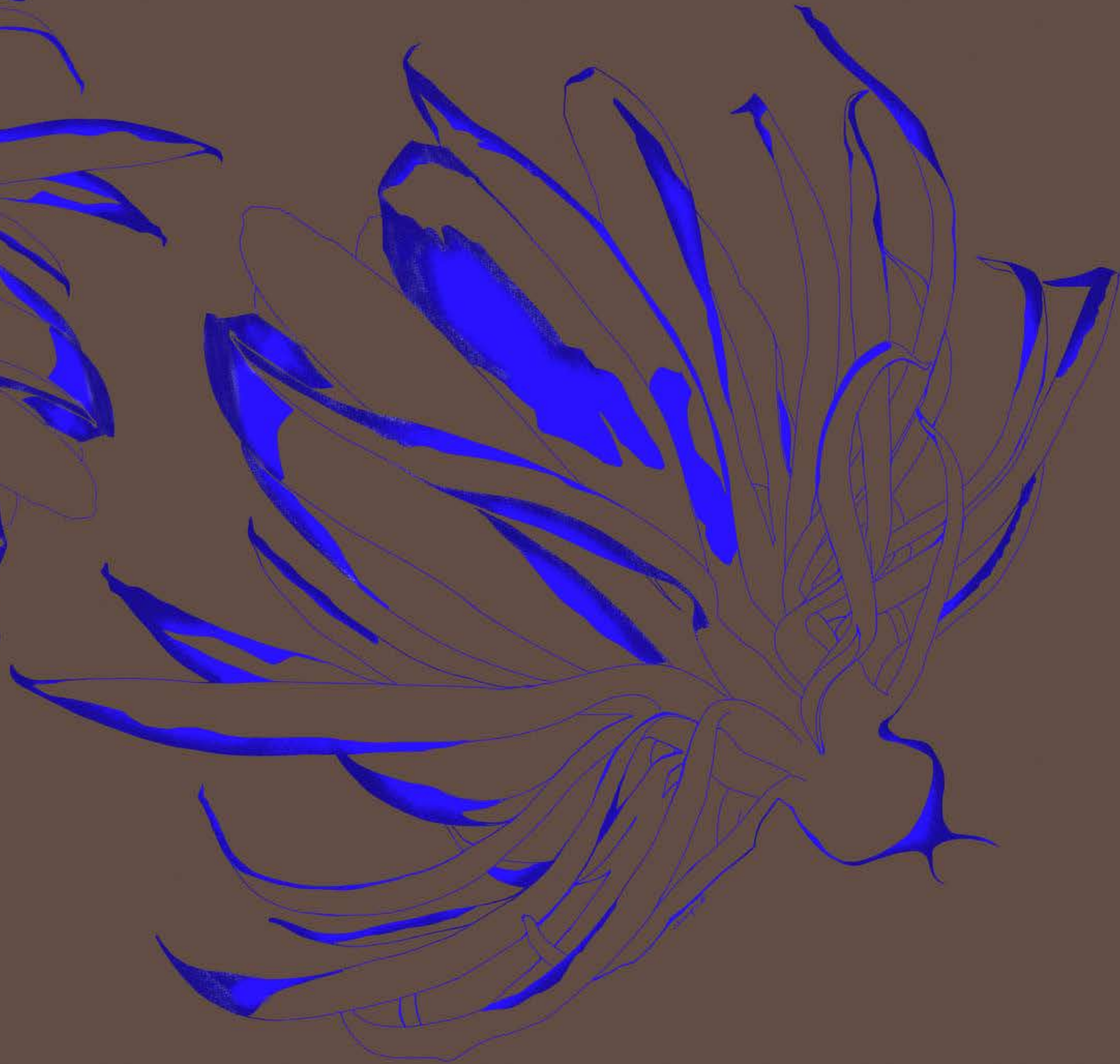






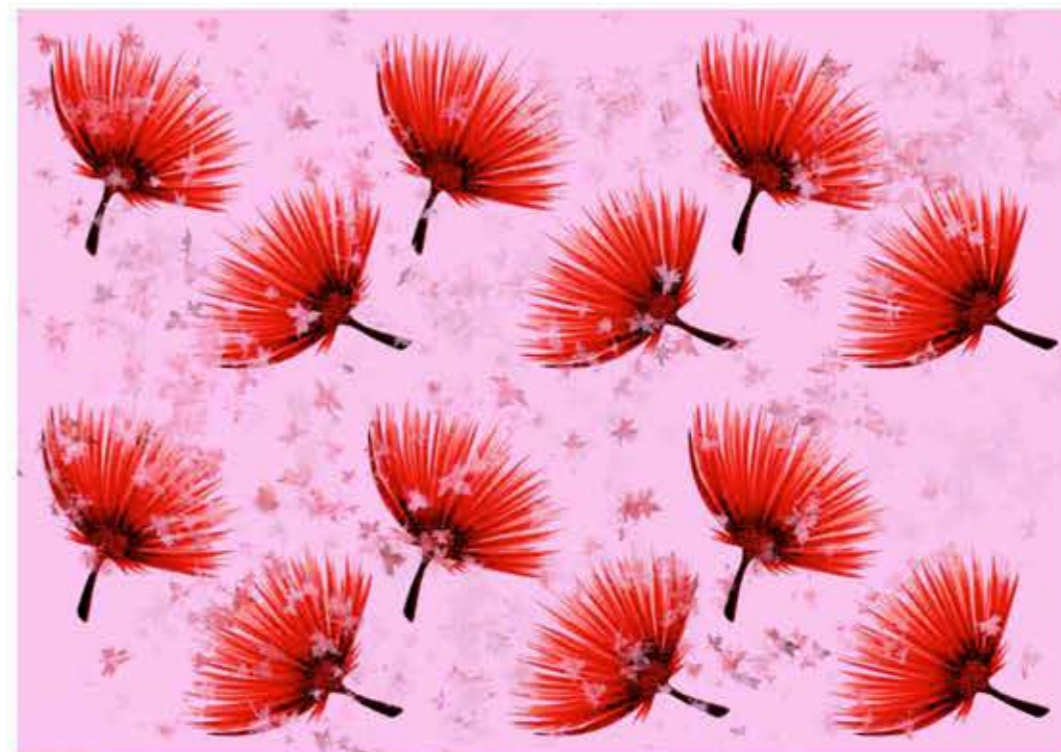
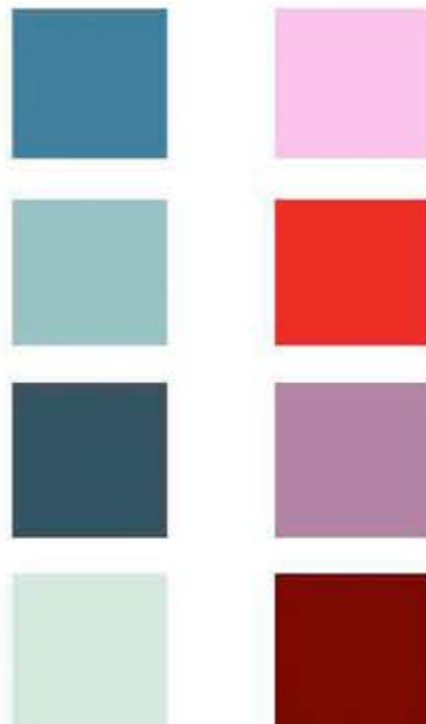




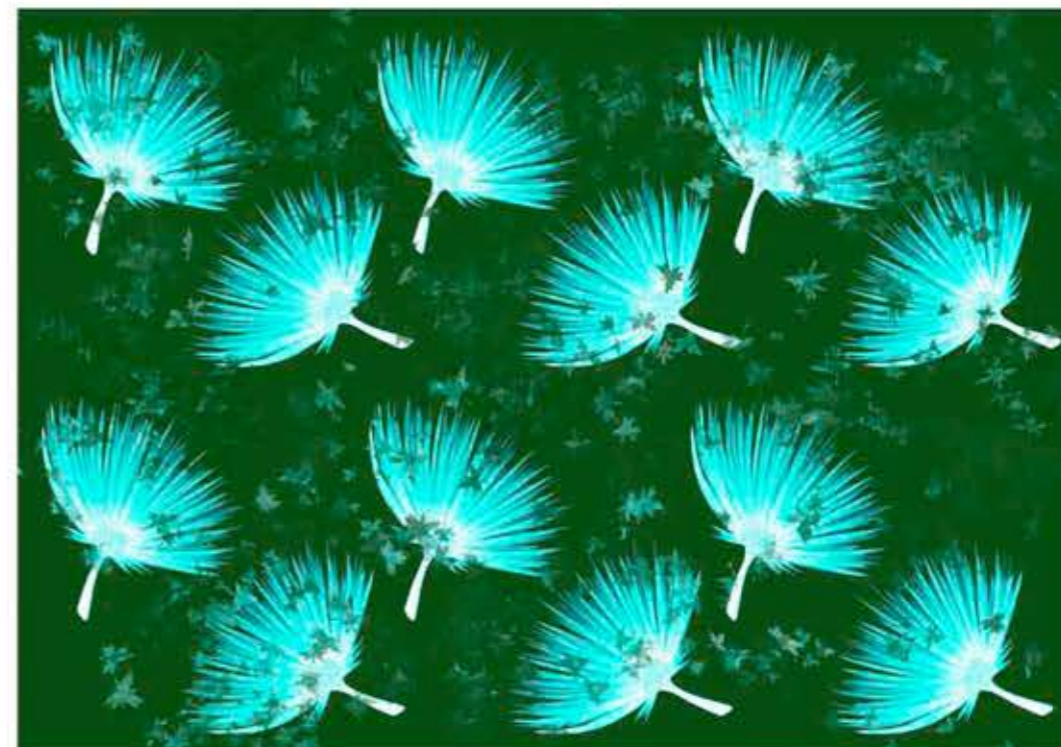




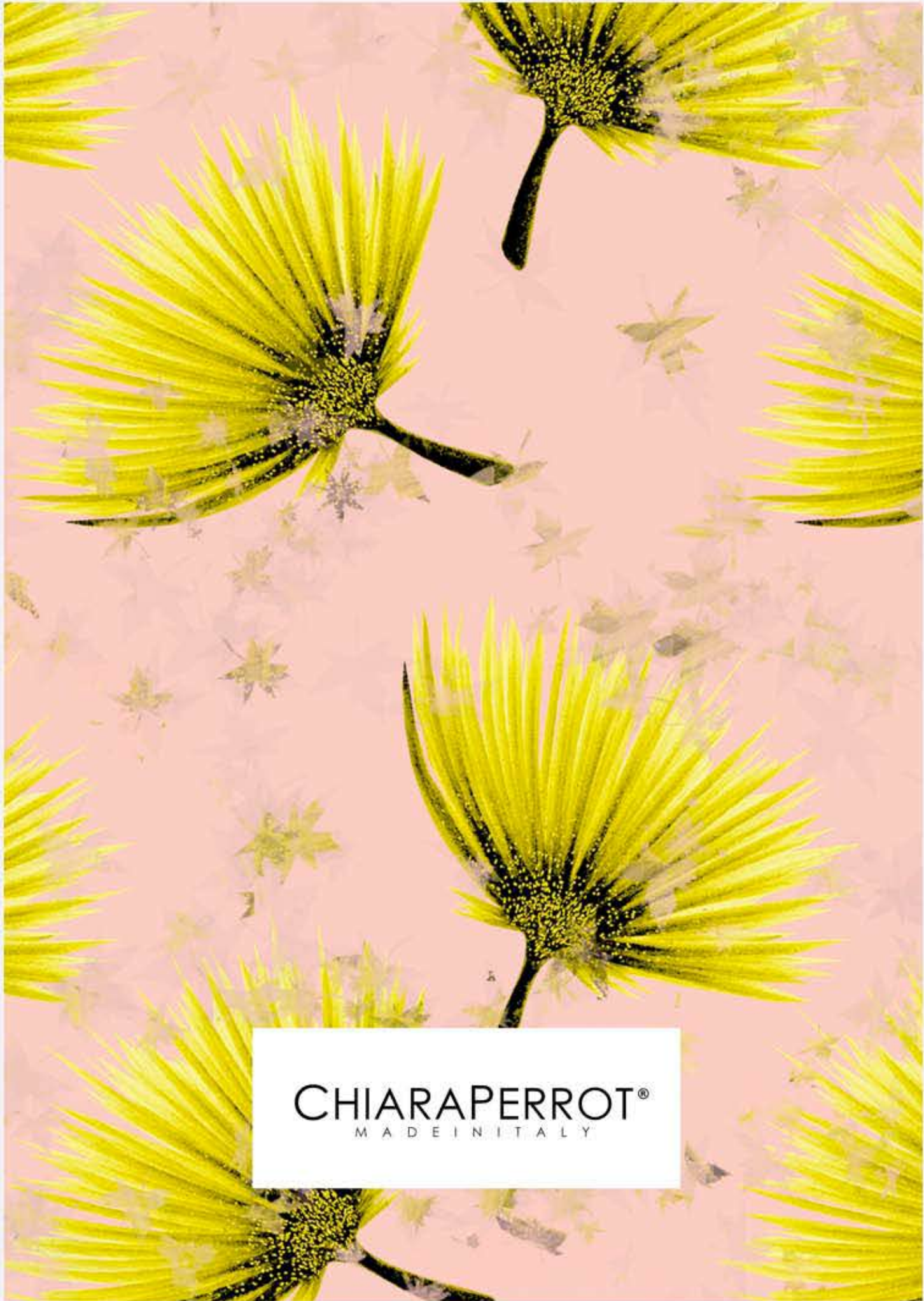




CHIARAPERROT®
MADE IN ITALY







CHIARAPERROT®
MADE IN ITALY

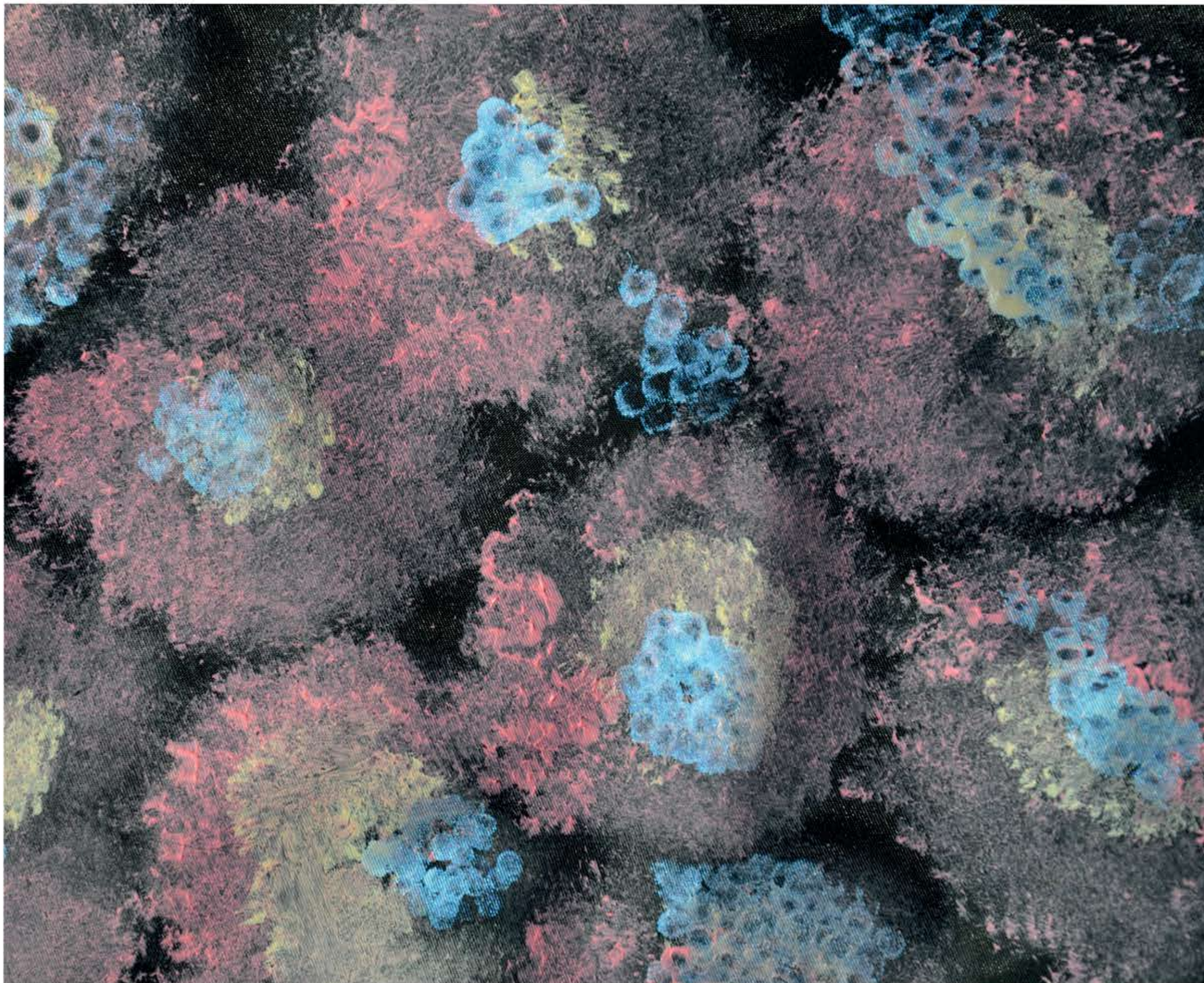




"I MUST HAVE FLOWERS, ALWAYS, AND ALWAYS" - CLAUDE MONET

CHIARAPERROT®
MADE IN ITALY

MOODBOARD
SS20



CHIARAPERROT®
MADE IN ITALY

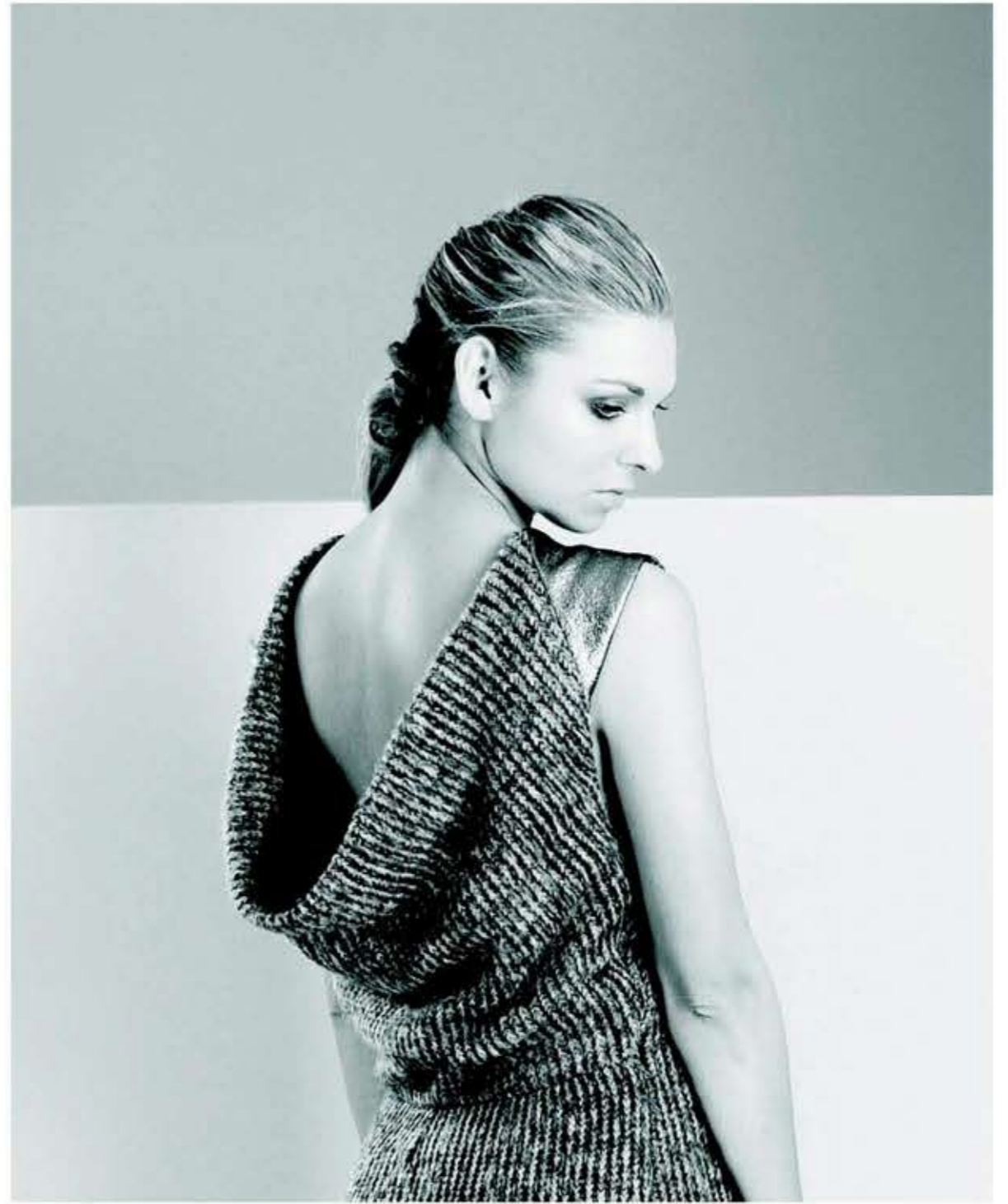
















CHIARAPERROT®



CHIC È SENSUALE

UNIVERSO OPTO

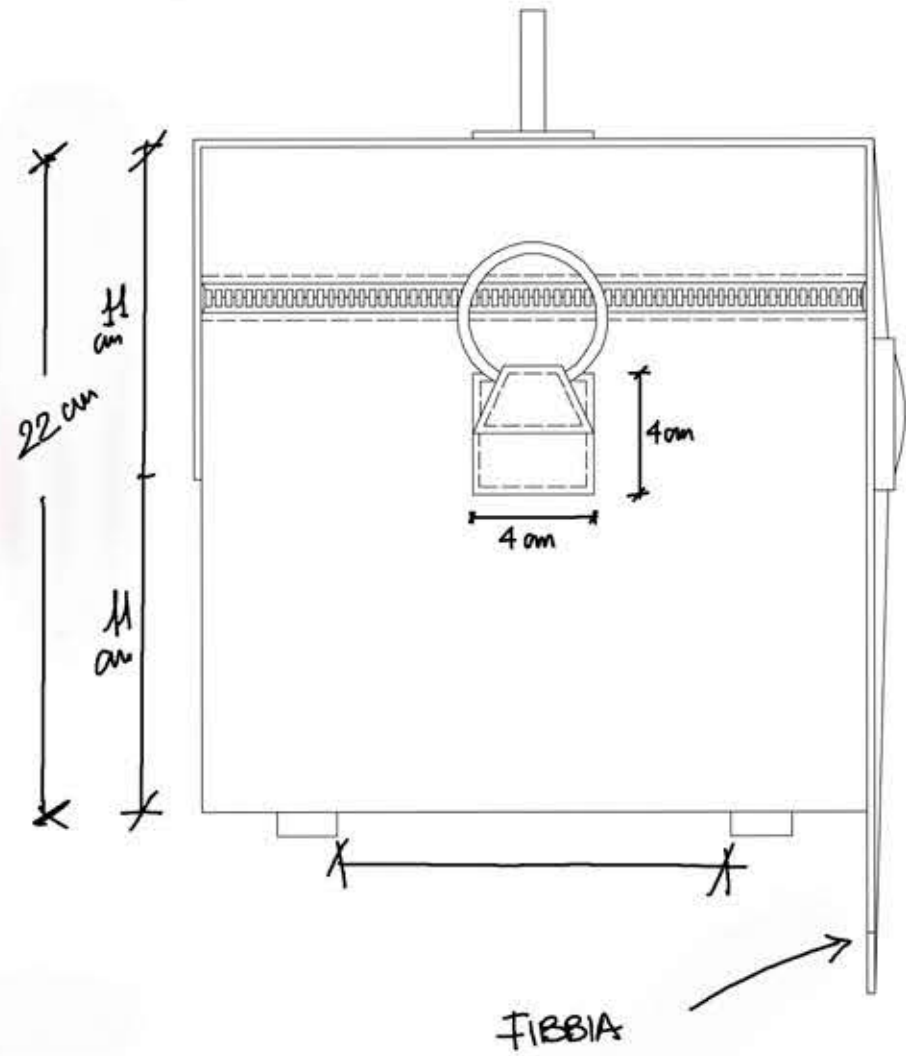
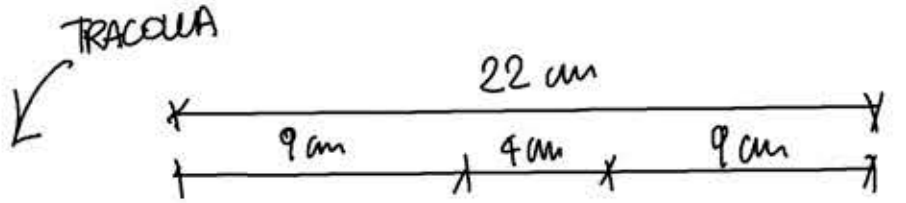
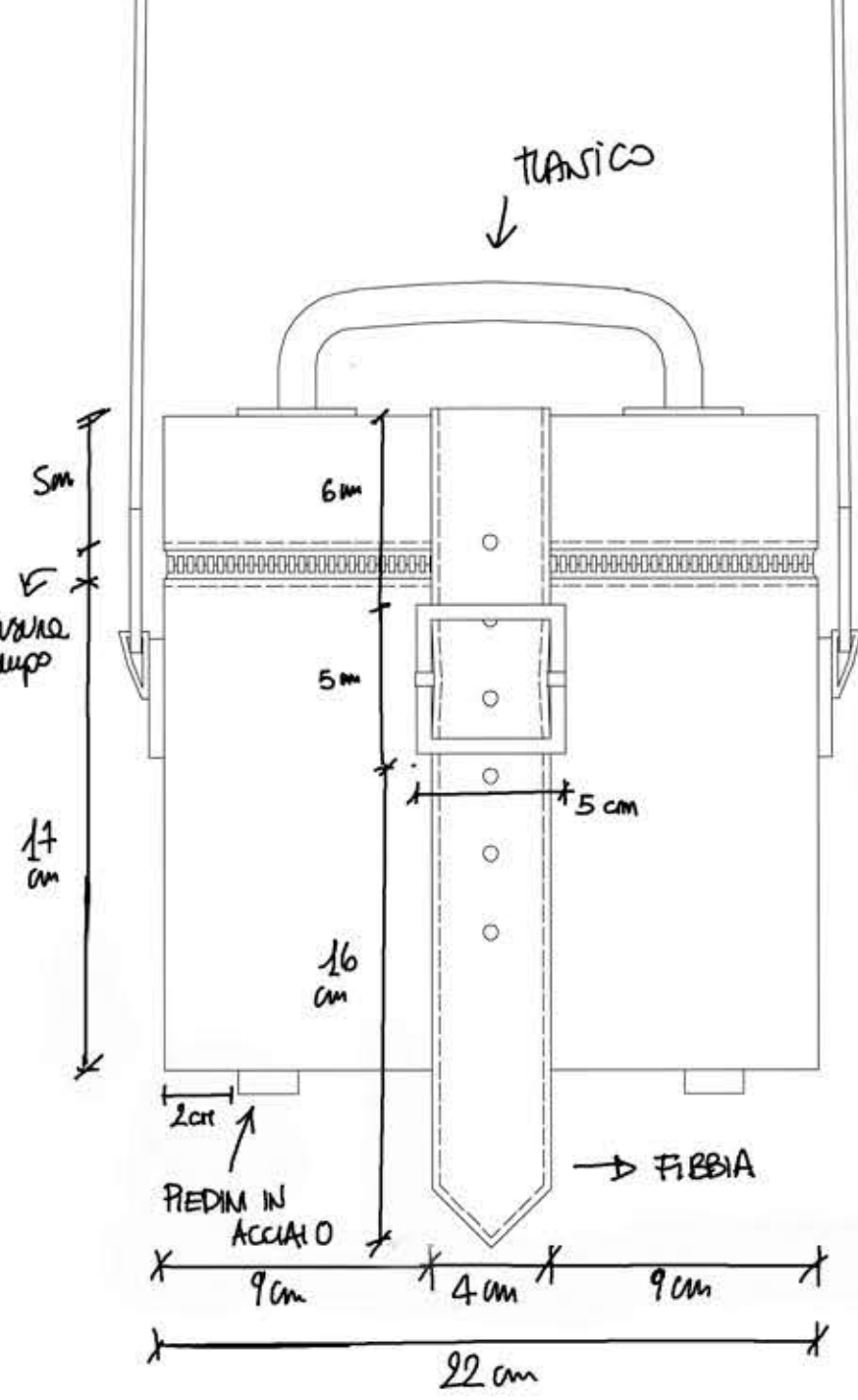




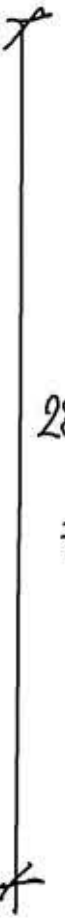
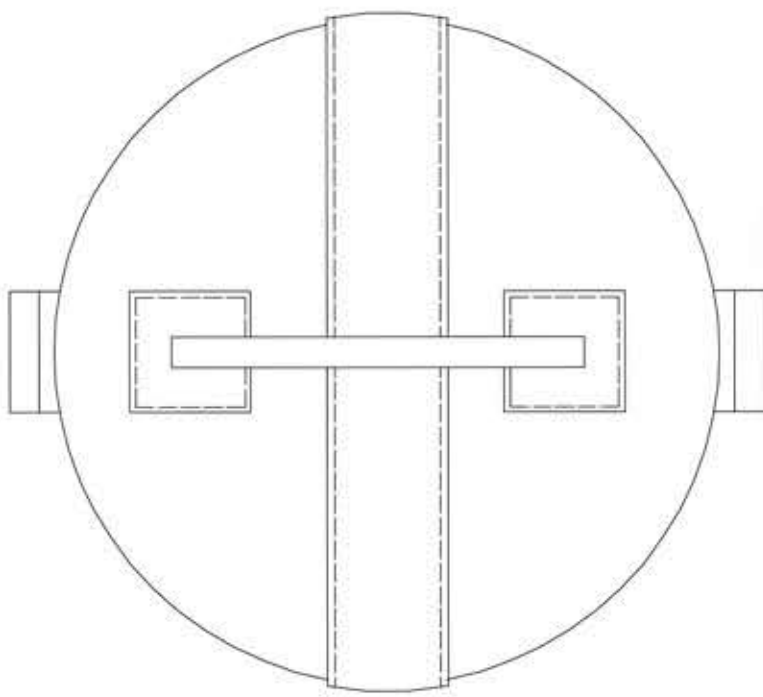


CHIARAPERROT®
MADE IN ITALY

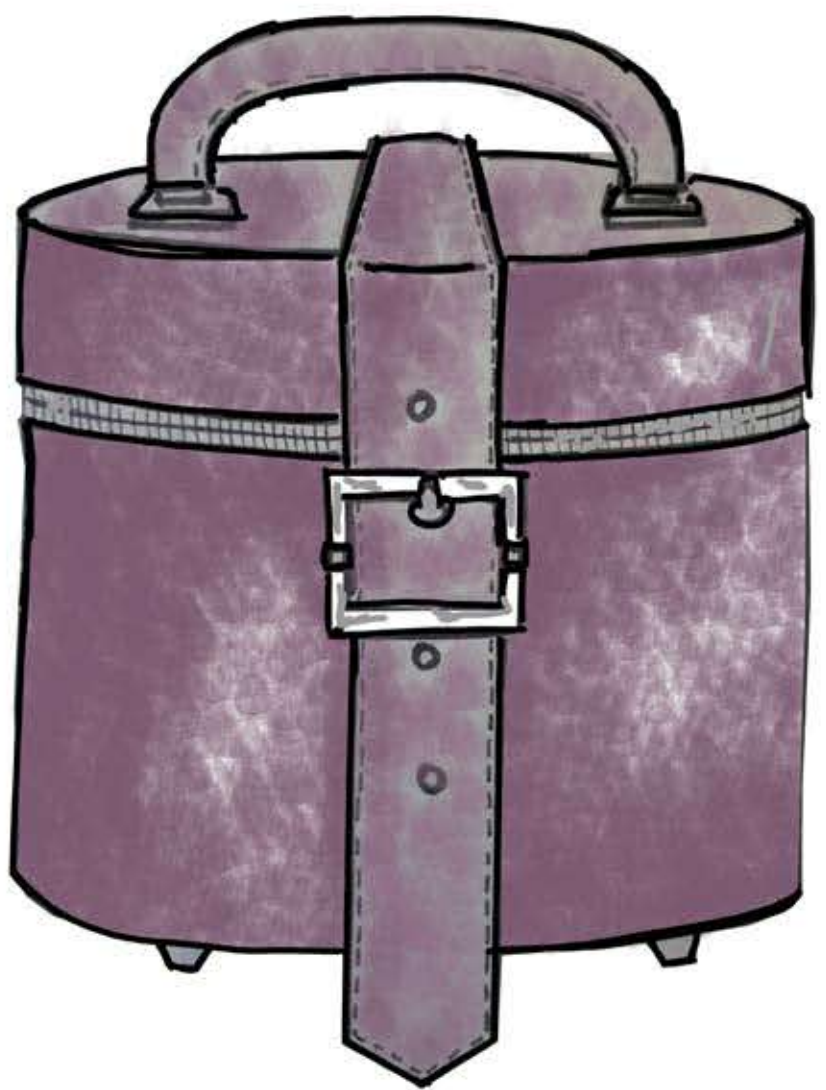
cod. art. CPBAGSS22-ARBOSELI
red. cappelliera mini
art. pelle RUGA
col. Rosa Antica
Val. col. allegare

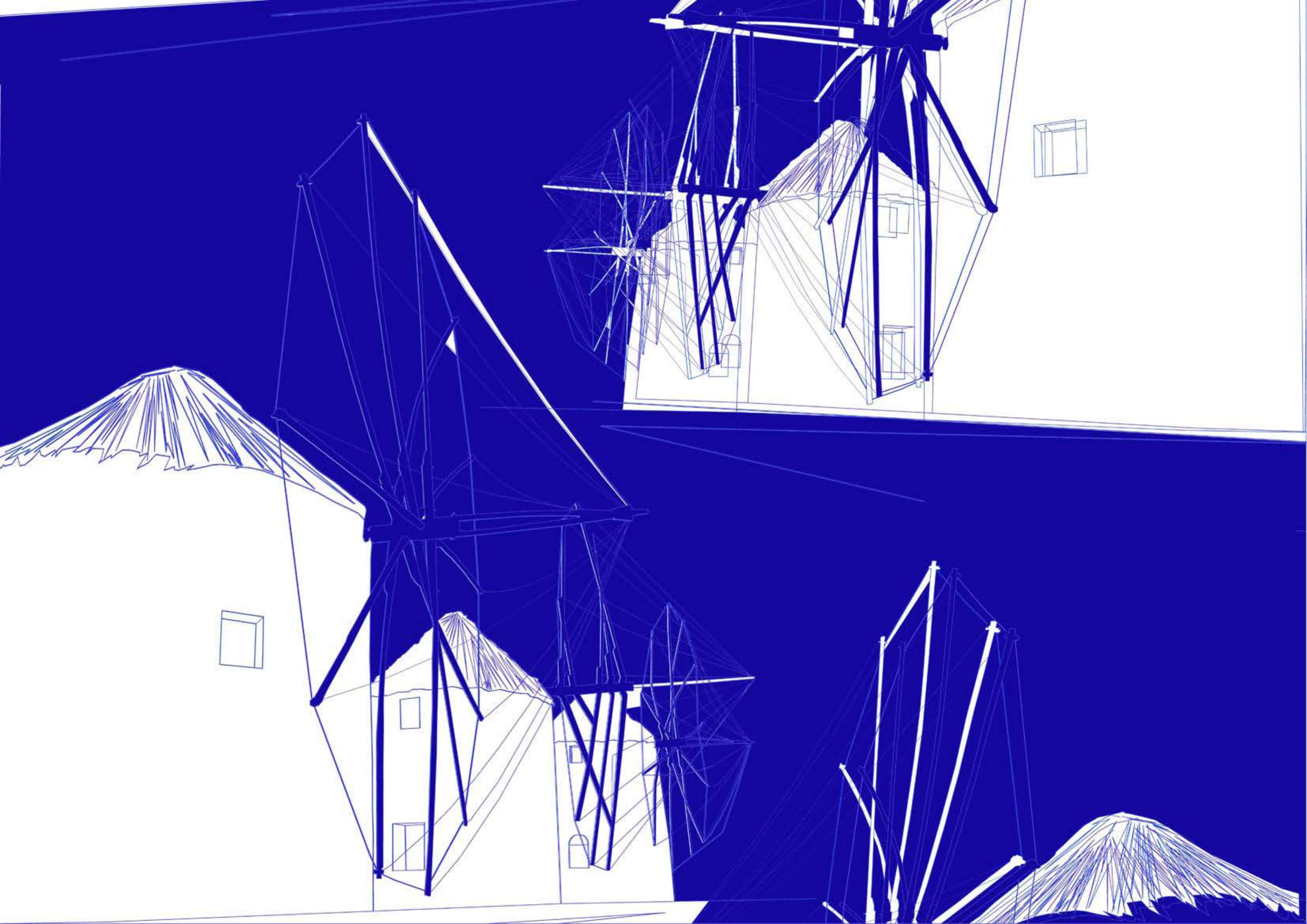


BASE CIRCOLARE
DIAMETRO 22 cm



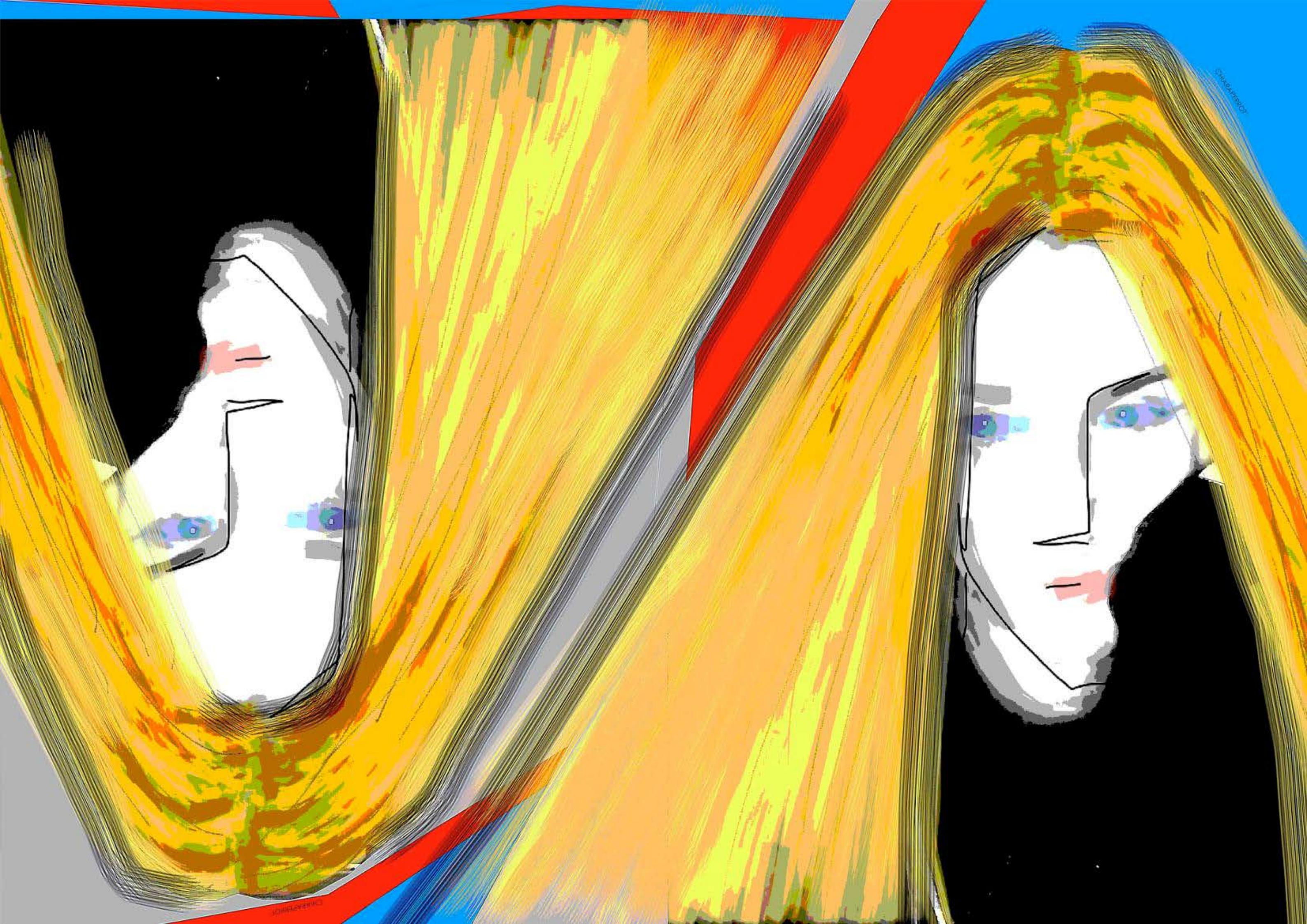
28 cm
LUNGHEZZA
FIBBIA.
SOTTO LA FIBBIA
TUTTERE BORDI CON
AUTOMATICI.







ALTAROMA SEPTEMBER 2020



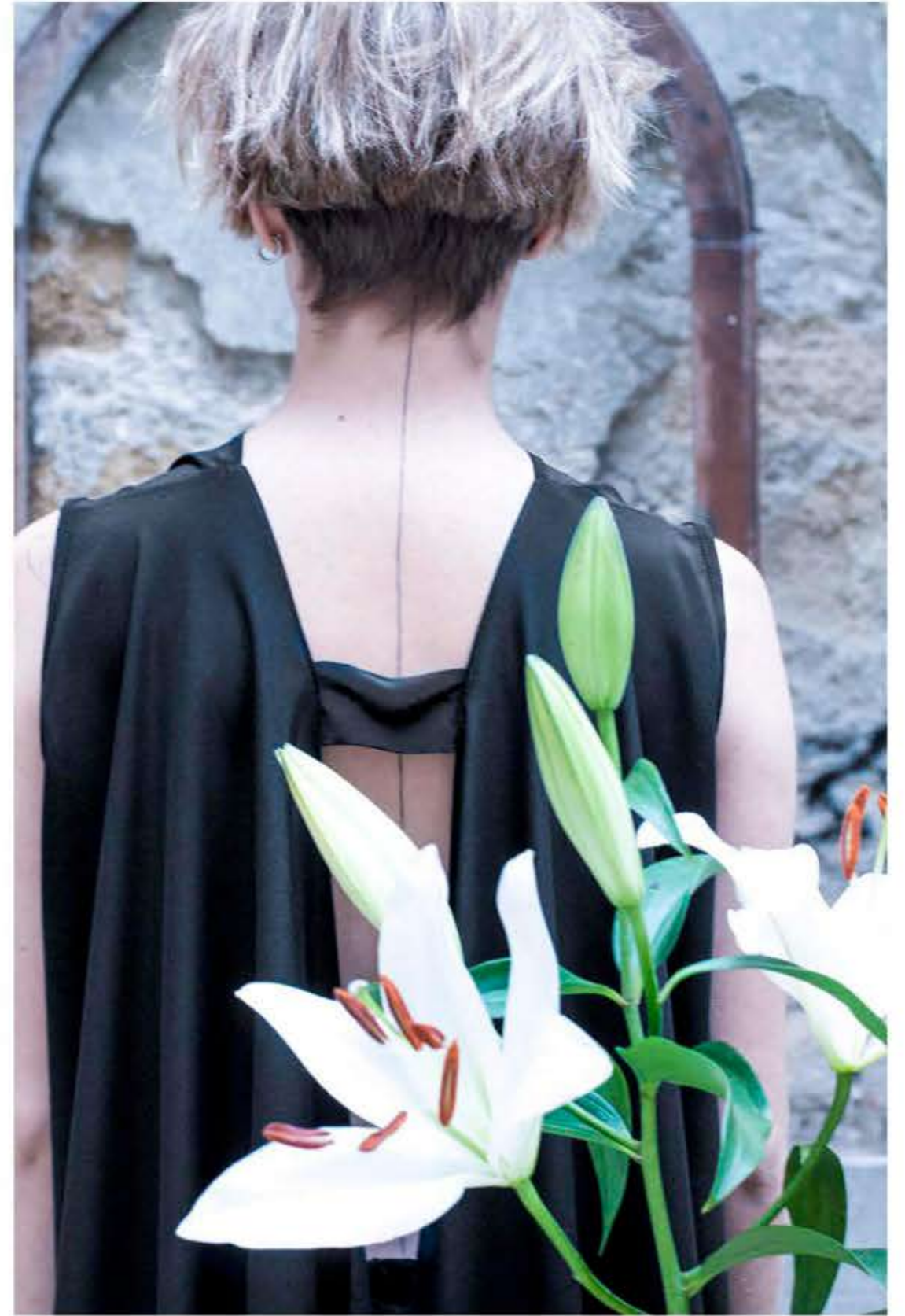






CHIARAPERROT®
MADE IN ITALY





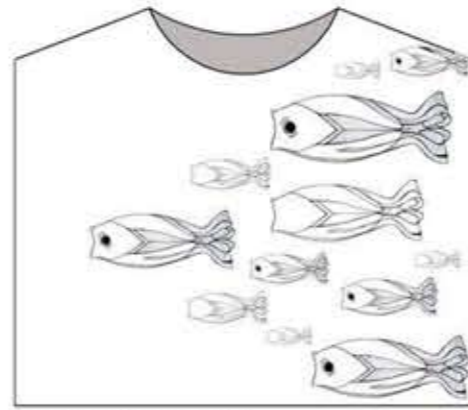
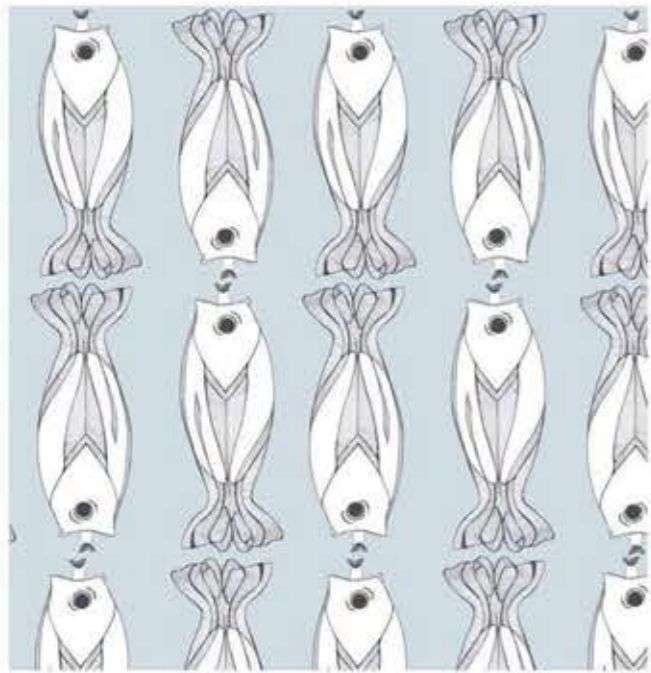
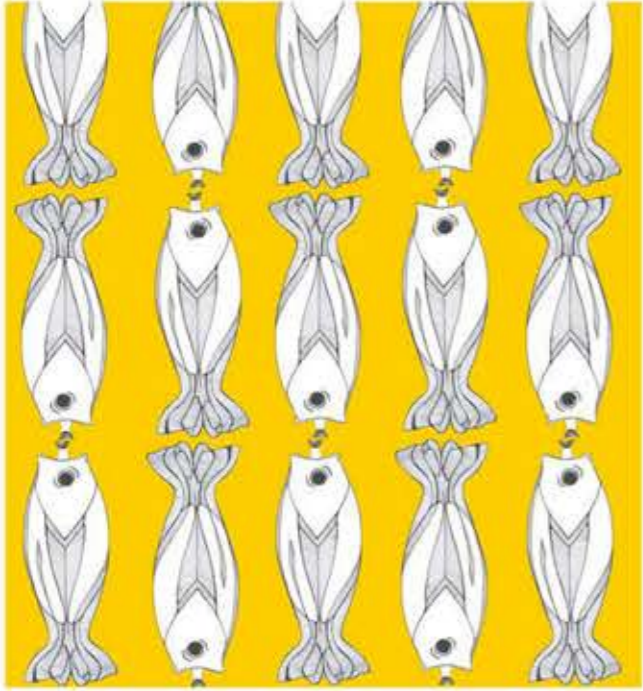
CHIARAPERROT®
MADE IN ITALY



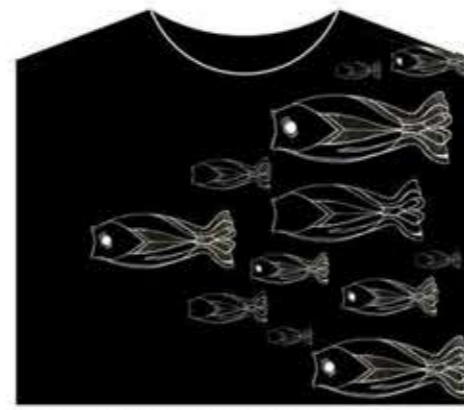
Casual_ità t-shirts capsule collection - collaborations with Serena Strino



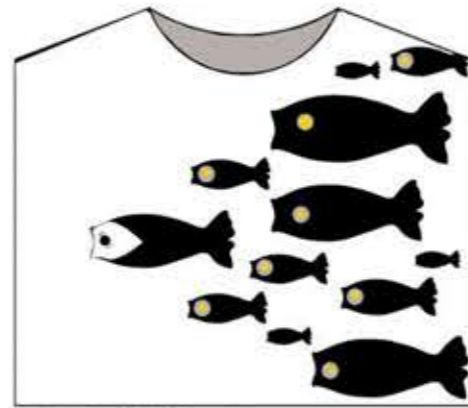
grafiche pe18



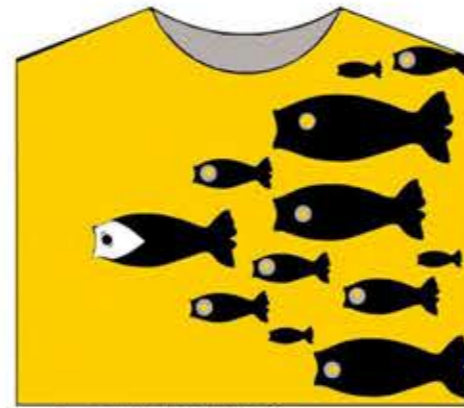
cod. art. SH002-1855 FRANCI



cod. art. SH002-1855 FRANCI BLACK



cod. art. SH002-1855 WANDA



cod. art. SH002-1855 WANDA G



cod. art. SH001-1855 GIADA



cod. art. SH001-1855 NORU



cod. art. SH001-1855 GIACO



cod. art. SH001-1855 BEA







CHIARAPERROT®
MADE IN ITALY

CHIARAPERROT®
MADE IN ITALY



FW 15/16 COLLECTION





CHIARAPERROT®
MADE IN ITALY

chiaraperrot
19



CHIARAPERROT®
MADE IN ITALY