



CUNNINGHAM
G R O U P

Cunningham Group
Architecture, Inc.
St. Anthony Main
201 Main St. SE
Suite 325
Minneapolis, MN
55414
Tel: 612 379 3400
Fax: 612 379 4400
www.cunningham.com

Revisions		
No	Date	Description
1	11/07/17	Add'l Materials

Date: _____
Comm. No.: _____
Drawn By: _____ Author
Checked By: _____ Checker
PIC/AIC: _____
Document Phase: _____

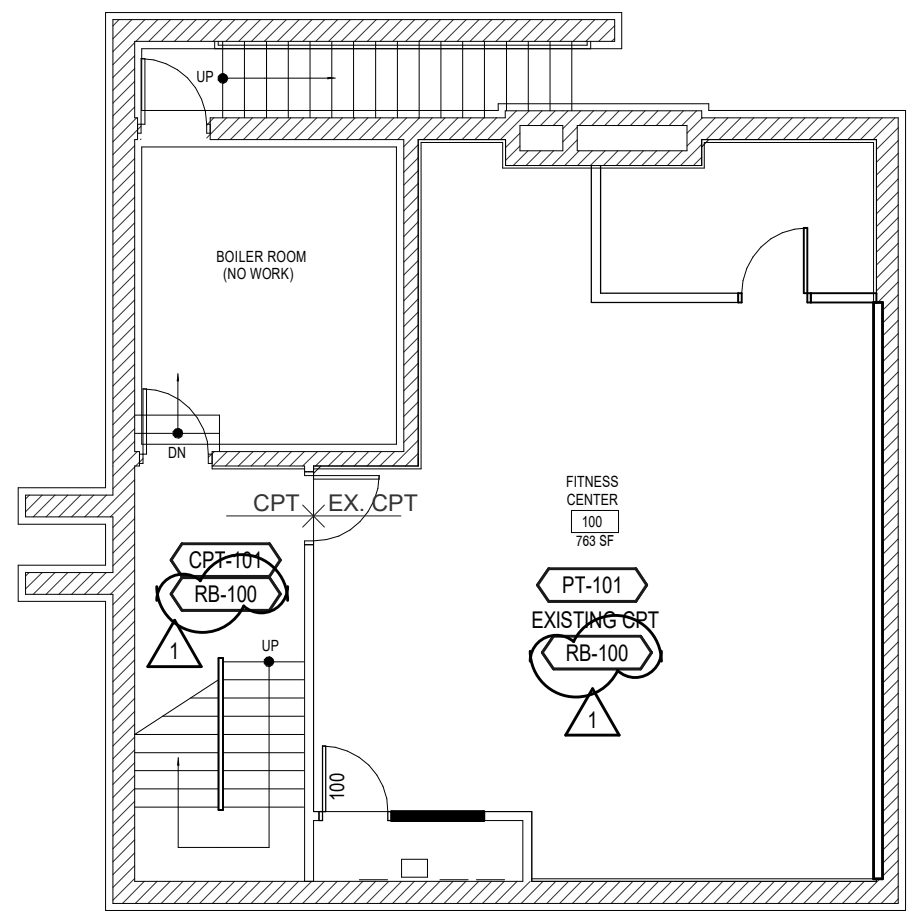
Project Title
Lancaster Village

Sheet Number
A700

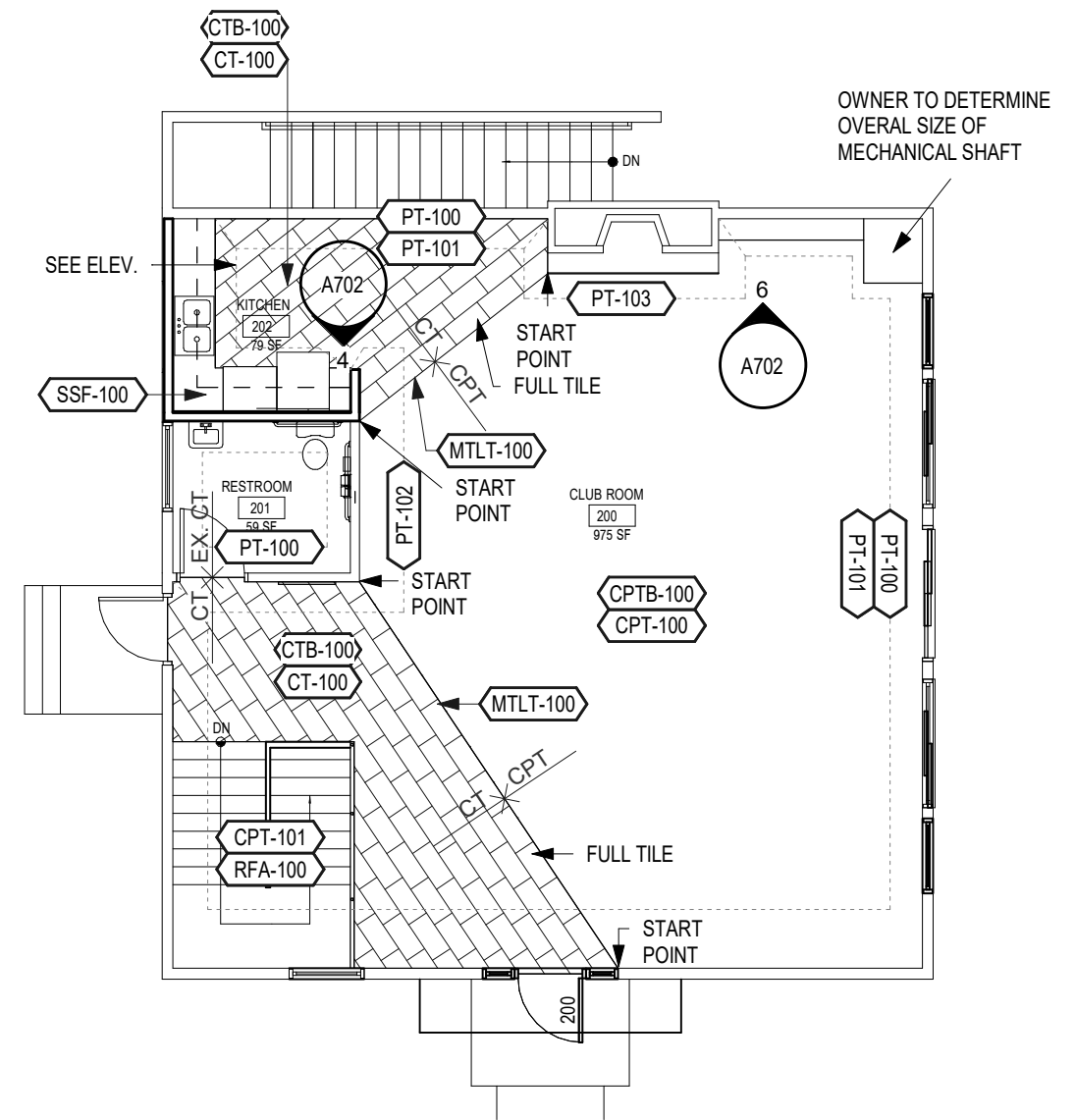
Copyright © 2017 by Cunningham Group Architecture, Inc. (All Rights Reserved)

General Notes - Finish Plan

1. SEE SHEET A710 FOR ALL FINISHES.



1 Lancaster Village - Basement - Finish Plan
A700 1/8" = 1'-0"



2 Lancaster Village - Level 1 - Finish Plan
A700 1/8" = 1'-0"

*EXTERIOR FINISHES BY OWNER



CUNNINGHAM
G R O U P

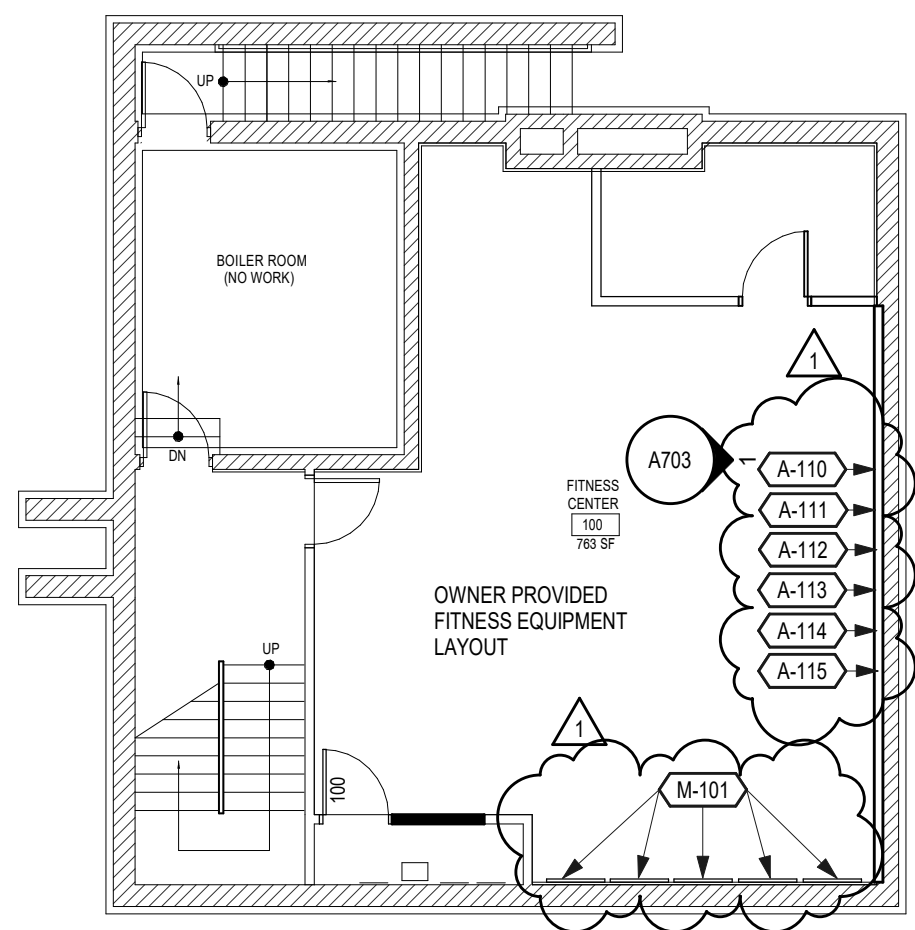
Cunningham Group
Architecture, Inc.
St. Anthony Main
201 Main St. SE
Suite 325
Minneapolis, MN
55414

Tel: 612 379 3400
Fax: 612 379 4400

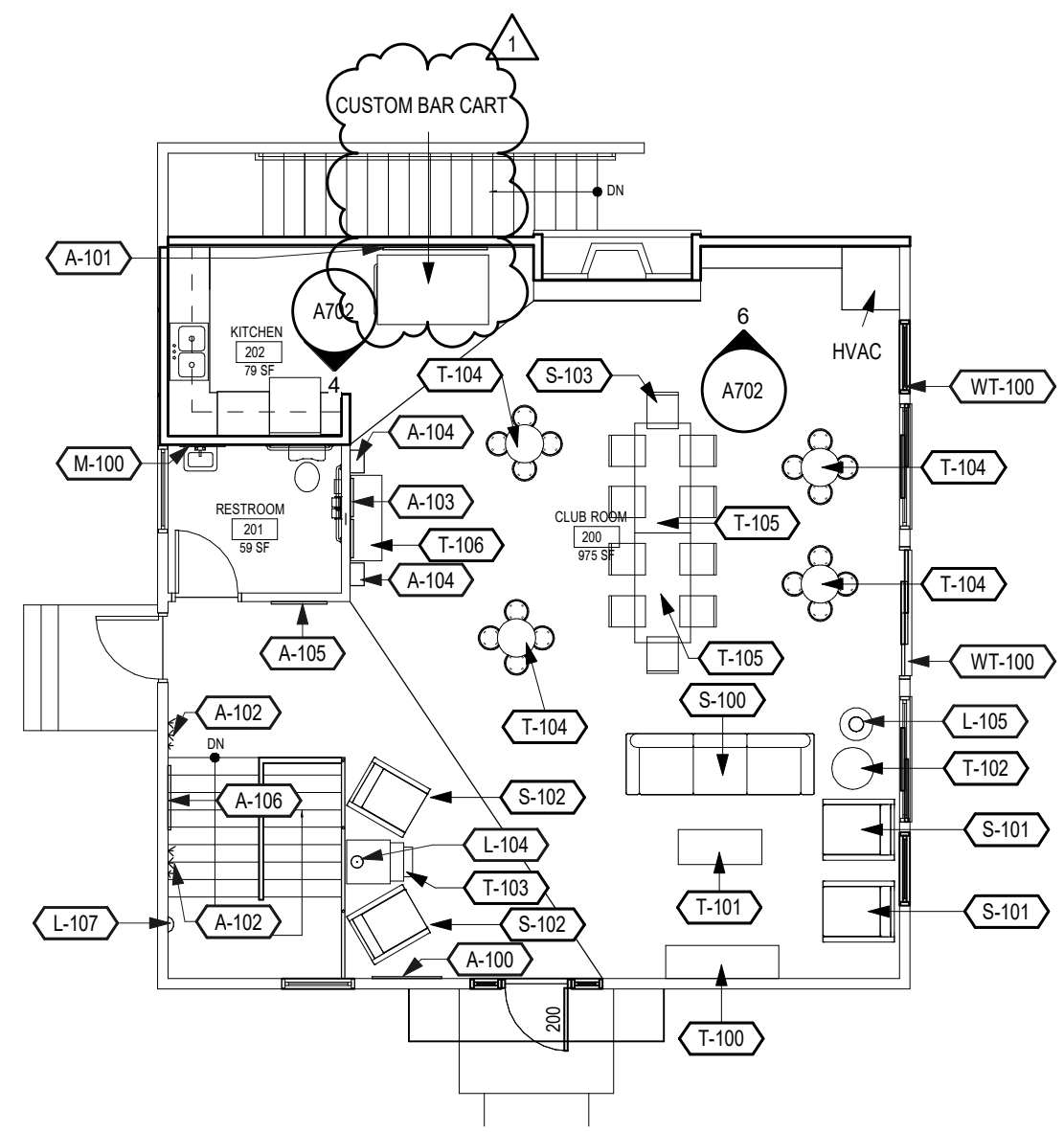
www.cunningham.com

General Notes - Furniture Plan

1. CENTER OF ARTWORK TO BE MOUNTED 57" FROM FLOOR.
2. EDGE OF ART AT STAIRS TO BE AT LEAST 24" AWAY FROM SCONCE.
3. SEE INTERIOR SPECIFICATIONS LIST FOR FURNITURE SPECS.



1 Lancaster Village - Basement - Furniture Plan
A701 1/8" = 1'-0"



2 Lancaster Village - Level 1 - Furniture Plan
A701 1/8" = 1'-0"

Revisions		
No	Date	Description
1	11/07/17	Add'l Materials

Date: _____

Comm. No.: _____

Drawn By: _____ Author

Checked By: _____ Checker

PIC/AIC: _____

Document Phase: _____

Project Title
Lancaster Village

Sheet Number
A701



CUNNINGHAM GROUP

Cunningham Group
Architecture, Inc.
St. Anthony Main
201 Main St. SE
Suite 325
Minneapolis, MN
55414
Tel: 612 379 3400
Fax: 612 379 4400
www.cunningham.com

Revisions		
No	Date	Description

Date: _____
Comm. No.: _____
Drawn By: _____ Author
Checked By: _____ Checker
PIC/AIC: _____
Document Phase: _____

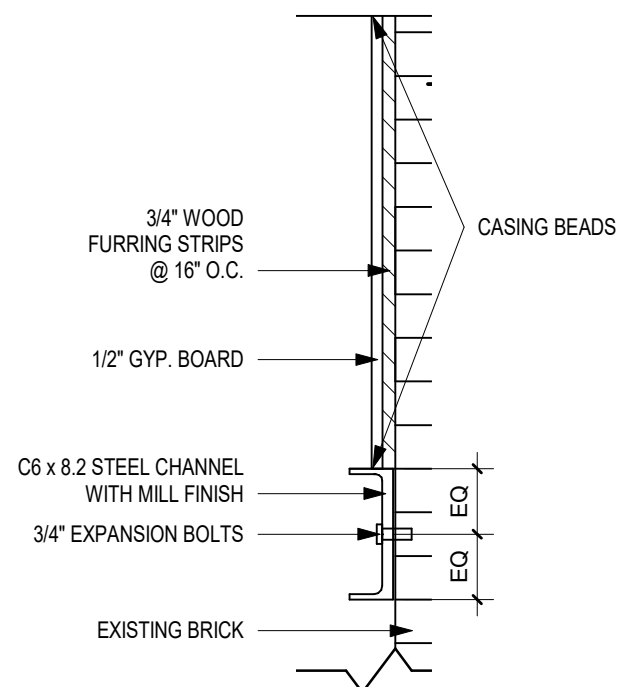
Project Title
Lancaster Village

Sheet Number
A702

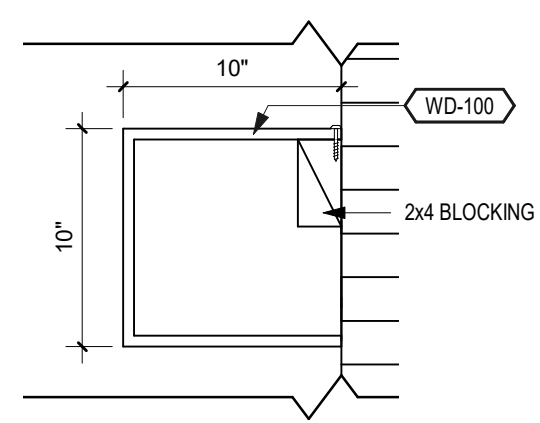
Copyright © 2017 by Cunningham Group Architecture, Inc. (All Rights Reserved)

Keynotes

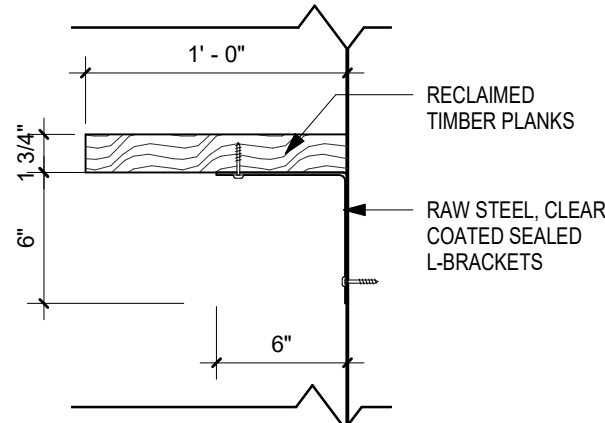
Mark	Remark
1	PRIME BRICK WITH MASONRY PRIMER BEFORE PAINTING



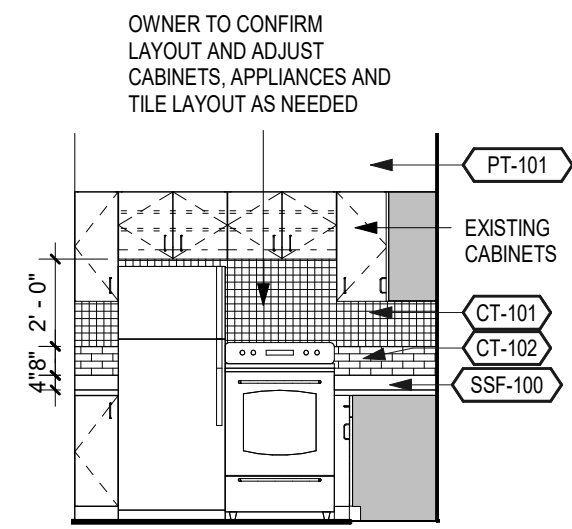
1 Detail - Steel Channel at Fireplace
A702 1 1/2" = 1'-0"



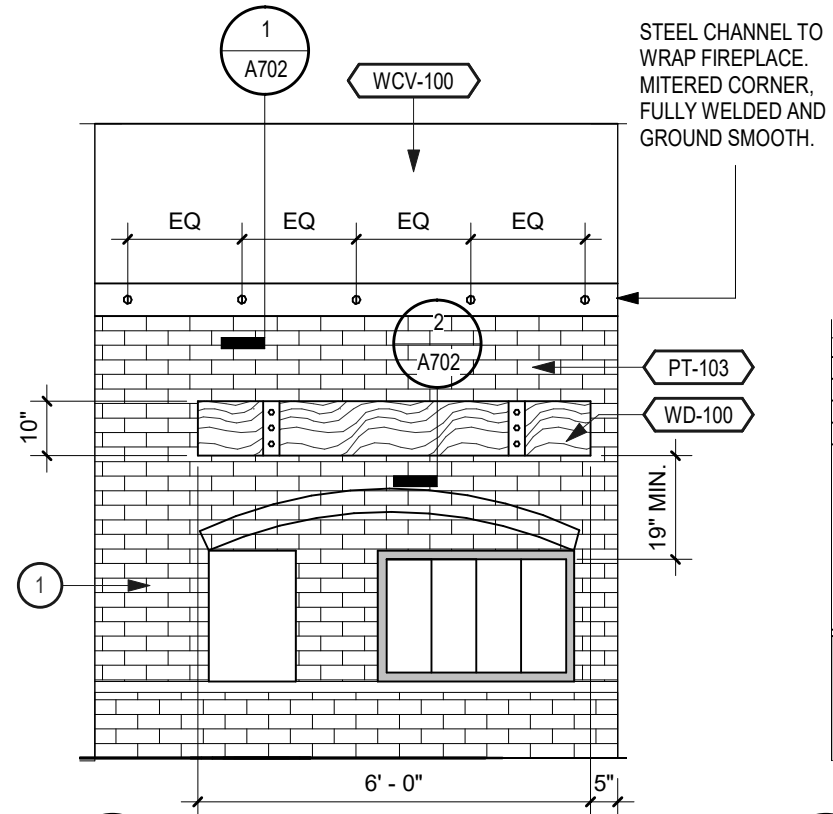
2 Detail - Mantel at Fireplace
A702 1 1/2" = 1'-0"



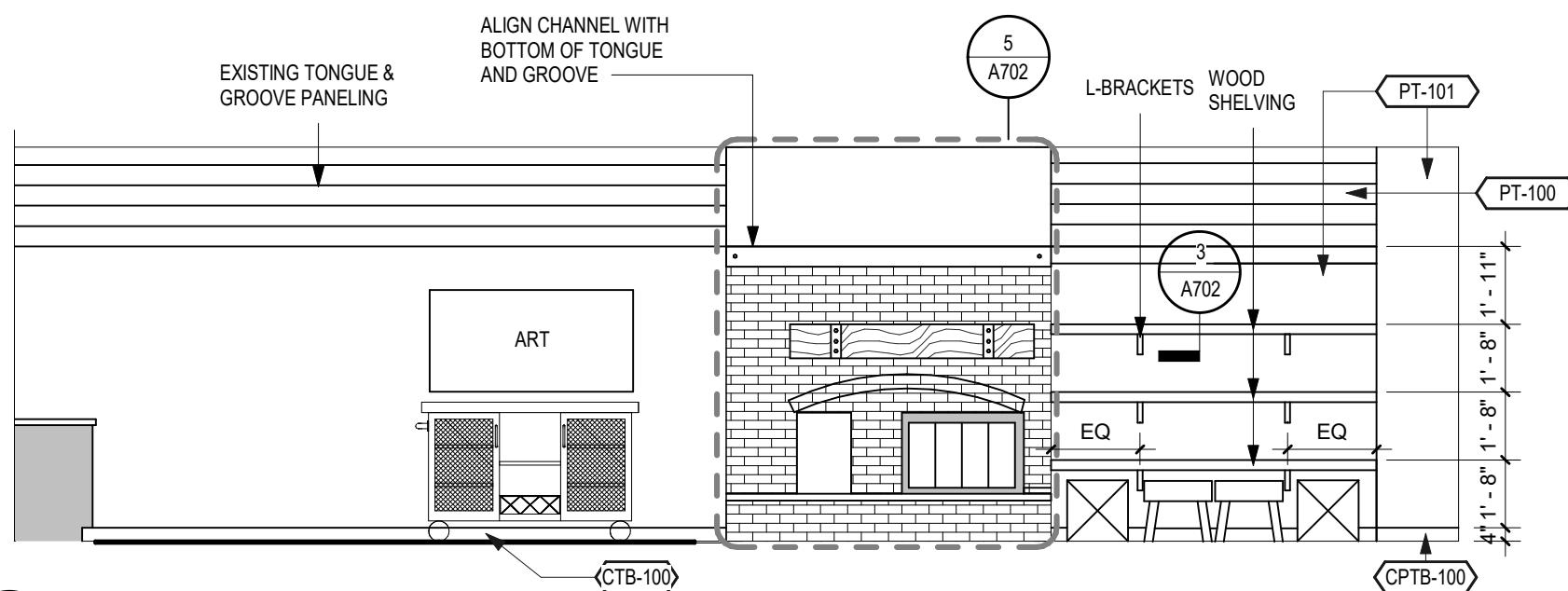
3 Detail - Wood Shelving
A702 1 1/2" = 1'-0"



4 Elevation - Kitchen Backsplash
A702 1/4" = 1'-0"



5 Detail - Enlarged Fireplace
A702 3/8" = 1'-0"



6 Elevation - Fireplace
A702 1/4" = 1'-0"



CUNNINGHAM
G R O U P

Cunningham Group
Architecture, Inc.
St. Anthony Main
201 Main St. SE
Suite 325
Minneapolis, MN
55414

Tel: 612 379 3400
Fax: 612 379 4400

www.cunningham.com

Revisions		
No	Date	Description

Date: _____

Comm. No.: _____

Drawn By: _____ Author

Checked By: _____ Checker

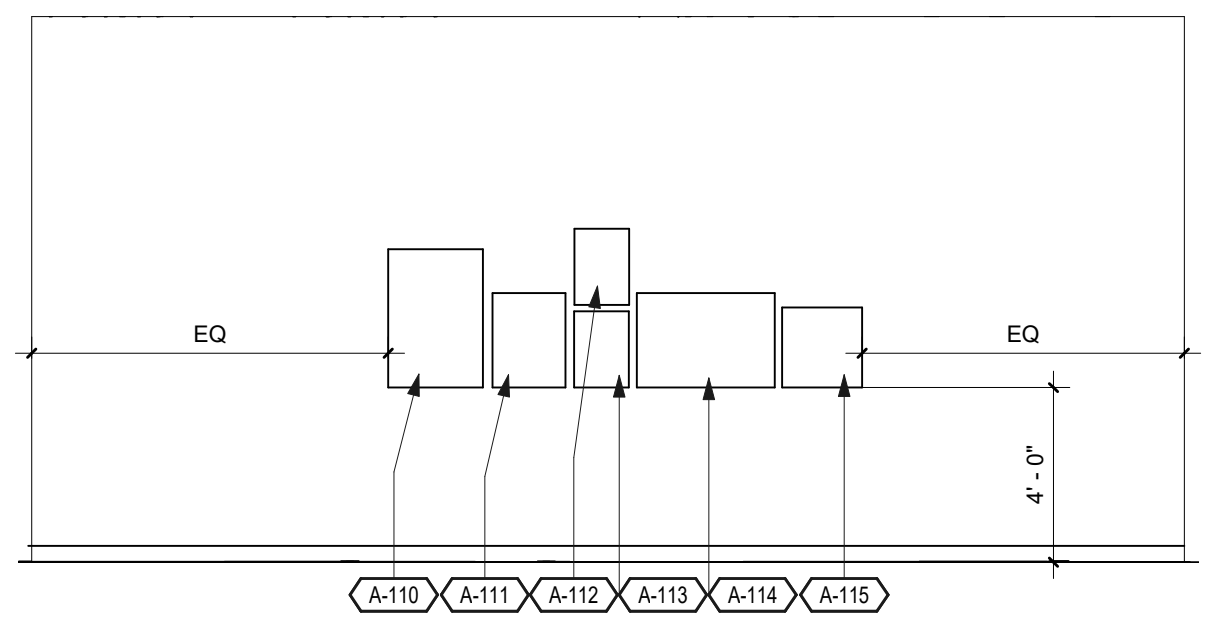
PIC/AIC: _____

Document Phase: _____

Project Title
Lancaster Village

Sheet Number
A703

Copyright © 2017 by Cunningham Group Architecture, Inc.
(All Rights Reserved)



1 **Elevation - Fitness Center Art**
A703 1/4" = 1'-0"

Color & Finish Schedule (Materials)

Code	SPEC#	Material Description	Manufacturer	Product (Model)	Color/Finish	Size	Special Instructions	Location Comments	Contact
CPT-100	096800	BROADLOOM	J&J CARPET	APERTURE 9722	2257 DARK SEPIA	12'		LOUNGE & STAIRS	TONY HILL, 763-614-8896, tony.hill@jfflooringgroup.com
CPT-101	096813	CARPET TILE	BOLYU CARPET	FLIP SIDE	FLP76 ROLLER COASTER	24" X 24"	INSTALL MONOLITHIC	BASEMENT	JENNY CAREY, 612.242.2300, jenny.carey@bolyu.com
CPTB-100	093000	BROADLOOM	COVE WORKS	CRAFTSMAN 8895	34148 MORNING ESPRESSO	4"H		LOUNGE	BRIAN FREDRICKSON, 612-387-3999, bfredrickson@mann-inc.com
CT-100	093000	PORCELAIN TILE	RBC TILE/BACK BAY	AV245 FIELD TILE	245	12X24	INSTALL 1/3 STAGGERED. SANDED GROUT: LATICRETE 60 DUSTY GREY	KITCHEN & ENTRIES	ELKE BANGERTER, 612-865-7717, ebangert@rbctile.com
CT-101	093000	CERAMIC TILE	TRANSCERAMICA	MAZE	PLATINUM	2X2 SHEET	UNSANDED GROUT: LATICRETE 24 NATURAL GREY	KITCHEN BACKSPLASH	JESSICA STRUPP, 262-388-9741, jstrupp@transceramica.com
CT-102	093000	PORCELAIN TILE	ANN SACKS	SAVOY METALLIC BRICK OFFSET	BRONZE	12X12 SHEET	UNSANDED GROUT: LATICRETE 24 NATURAL GREY	KITCHEN BACKSPLASH	LIA WILLIAMS ENG, 949-291-4218, lia.williamseng@annsacks.com
CTB-100	096800	PORCELAIN TILE BASE	RBC TILE/BACK BAY	AV245 COVE BASE	245	6X12	SANDED GROUT: LATICRETE 60 DUSTY GREY	TILE BASE	ELKE BANGERTER, 612-865-7717, ebangert@rbctile.com
1 HDWR-100	087100	BAR CART PULL	LIBERTY HARDWARE	5" FRANCISCO PULL	WARM CHESTNUT	5"		CUSTOM BAR CART	www.libertyhardware.com
HDWR-101	087100	BAR CART WHEELS	CASTER CONNECTION	CCVINTAGE-6S	BLACK CAST IRON	6" DIA.	ORDER WITH BREAK	CUSTOM BAR CART	www.casterconnection.com
HDWR-102	087100	BAR CART CLAVOS	OLD WORLD HARDWARE	CL-101	RUSTIC IRON	1/2"		CUSTOM BAR CART	www.oldworldhardware.com
MPLT-100	093000	METAL TRANSITION	SCHLUTER	SCHIENE	ANODIZED ALUMINUM	GC TO VERIFY		TILE TO CARPET	CHAD MATTHEWS, 630.740.8332, cmatthews@schluter.com
PT-100	099923	PAINT	SHERWIN WILLIAMS	SW6073	PERFECT GREIGE		FINISH: EGG SHELL	CEILING & TONGUE & GROOVE WALL	JIM BERGEVIN, 612-720-9934, james.r.bergevin@sherwin.com
PT-101	099923	PAINT	SHERWIN WILLIAMS	SW7028	INCREDIBLE WHITE		FINISH: EGG SHELL	GENERAL WALL	JIM BERGEVIN, 612-720-9934, james.r.bergevin@sherwin.com
PT-102	099923	PAINT	SHERWIN WILLIAMS	SW6417	REGATTA		FINISH: EGG SHELL	ACCENT WALL	JIM BERGEVIN, 612-720-9934, james.r.bergevin@sherwin.com
1 PT-103	099923	PAINT	SHERWIN WILLIAMS	SW6075	GARRET GRAY		FINISH: EGG SHELL	FIREPLACE BRICK	JIM BERGEVIN, 612-720-9934, james.r.bergevin@sherwin.com
RB-100	096500	RUBBER BASE	FLEXCO	CAPTIVATE	038 OUTER BANKS	4-1/4" X 1/4"		FITNESS CENTER	KATE KOSKEY, 612.721.1000, kkoskey@hilinc.com
RFA-100	096500	RUBBER STAIR NOSING	FLEXCO	1X1 CARPET STAIR NOSING	038 OUTER BANKS	2" W X 1-3/4" H X 1/4" THICK		STAIRS	KATE KOSKEY, 612.721.1000, kkoskey@hilinc.com
2 SSF-100	012360	SOLID SURFACE	CAESARSTONE		6046 MOORLAND FOG			KITCHEN COUNTERTOP	MALLORY JOHNSON, 847-595-7866, mallory.johnson@caesarstoneus.com
WCV-100	097200	WALLCOVERING	KOROSEAL	FORTUNA SILK	OLYMPUS FS21-12	54"		FIREPLACE GYP. WRAP	MANDA MORALES, 763-234-1634, mmorales@koroseal.com
WD-100		WOOD	PRAIRIE WOODWORKS	BARNWOOD MANTEL WITH FAUX STRAPS	PREFINISHED: NATURAL GRAY PATINA	6'L x 10"D x 10"H	INSTALL BY ATTACHING TO 2X4 BLOCKING, ATTACHED TO MASONRY	MANTEL	KEN KRANZMAN, 262-352-6155, info@prairie-woodworking.com
1 WT-100	122400	WINDOW TREATMENT	MERMET	8535 D237 DECO 5%	HAZELNUT	TO BE FIELD MEASURED BY GC		ROLLER SHADES	KRISTIN MANN, 612-877-3200, kristin@warrendrapery.com



CUNNINGHAM GROUP

Cunningham Group Architecture, Inc.
 St. Anthony Main
 201 Main St. SE
 Suite 325
 Minneapolis, MN 55414
 Tel: 612 379 3400
 Fax: 612 379 4400
 www.cunningham.com

Revisions

No	Date	Description
1	11/07/17	Add'l Materials
2	11/20/17	Change in Materials

Date: _____

Comm. No.: _____

Drawn By: _____ Author

Checked By: _____ Checker

PIC/AIC: _____

Document Phase: _____

Project Title
 Lancaster Village

Sheet Number
 A710

*EXISTING BASEMENT CARPET: BOLYU INTERMIX / IMX59 FADE TO BLACK 24" x 24" TILE



CUNNINGHAM GROUP

Cunningham Group
 Architecture, Inc.
 St. Anthony Main
 201 Main St. SE
 Suite 325
 Minneapolis, MN
 55414
 Tel: 612 379 3400
 Fax: 612 379 4400
 www.cunningham.com

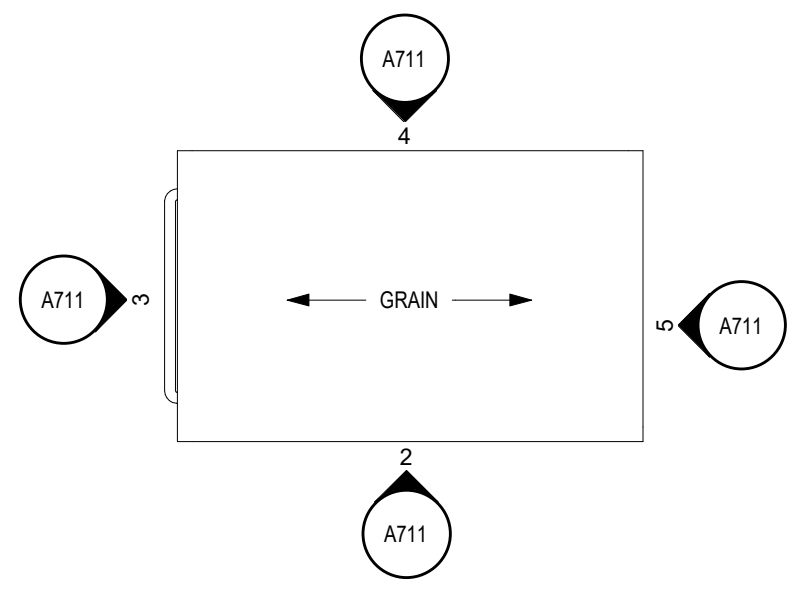
Revisions		
No	Date	Description

Date:	
Comm. No.:	
Drawn By:	Author
Checked By:	Checker
PIC/AIC:	
Document Phase:	

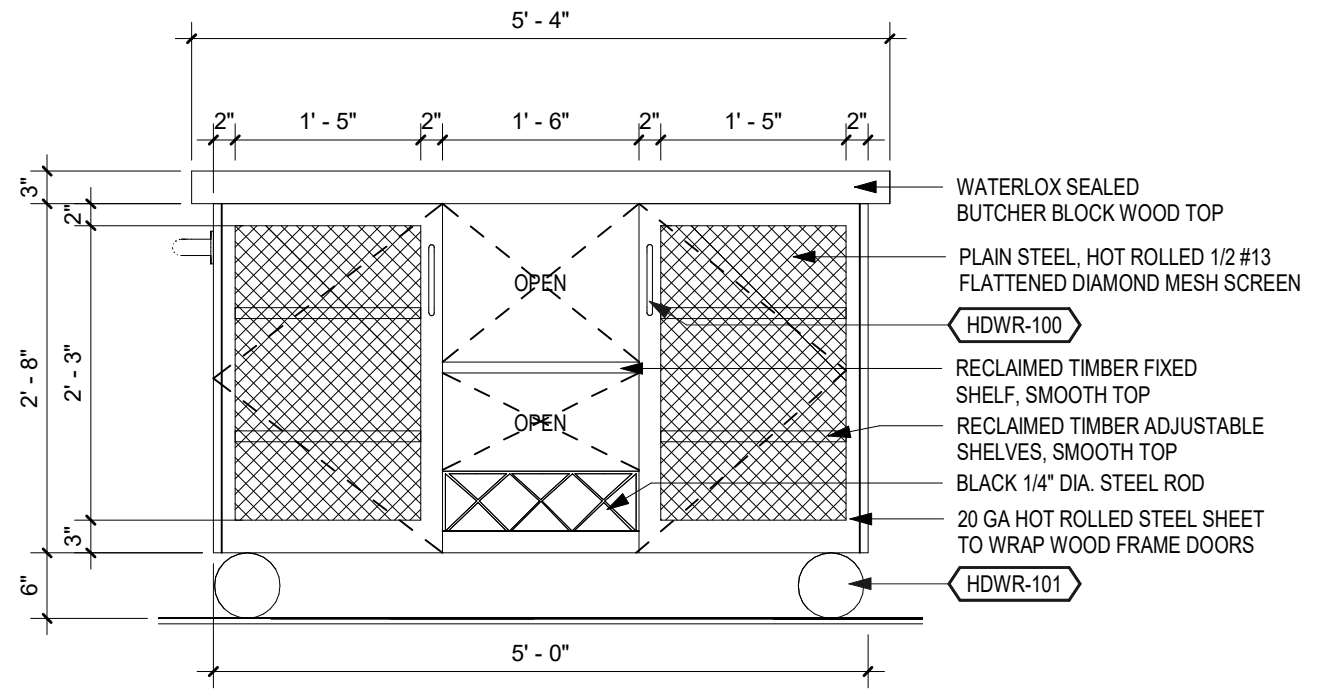
Project Title
 Lancaster Village

Sheet Number
 A711

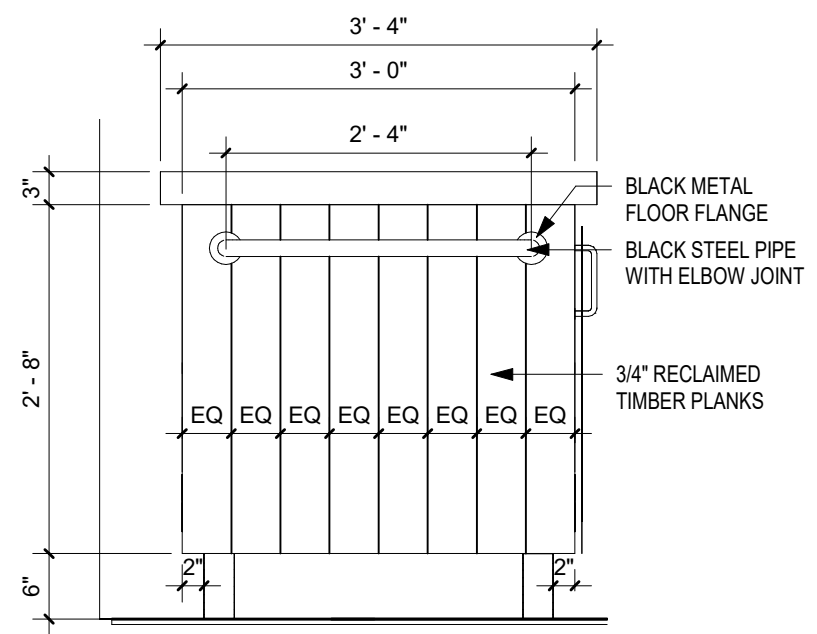
Copyright © 2017 by Cunningham Group Architecture, Inc. (All Rights Reserved)



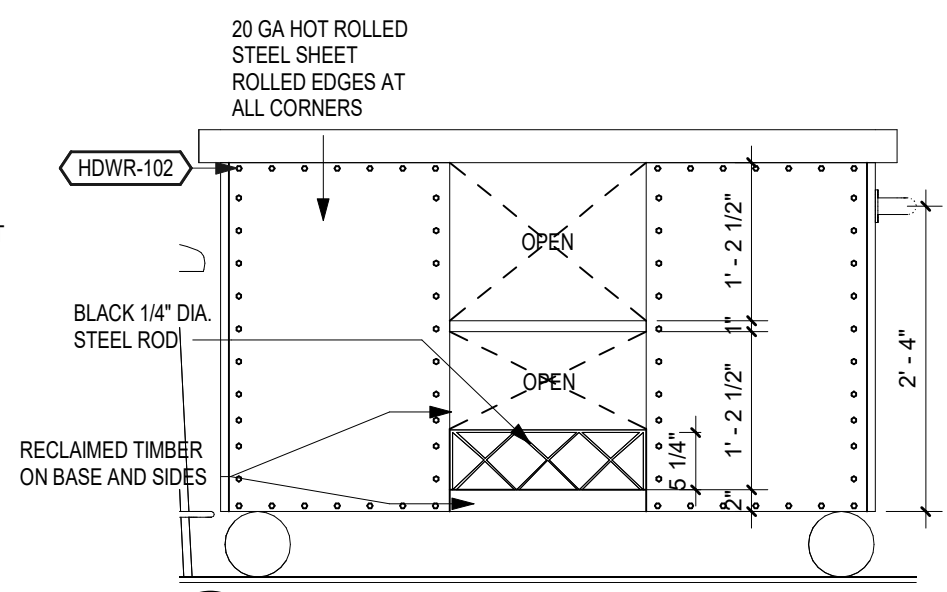
1 Lancaster Village - Level 1 - Bar Cart
 A711 1/2" = 1'-0"



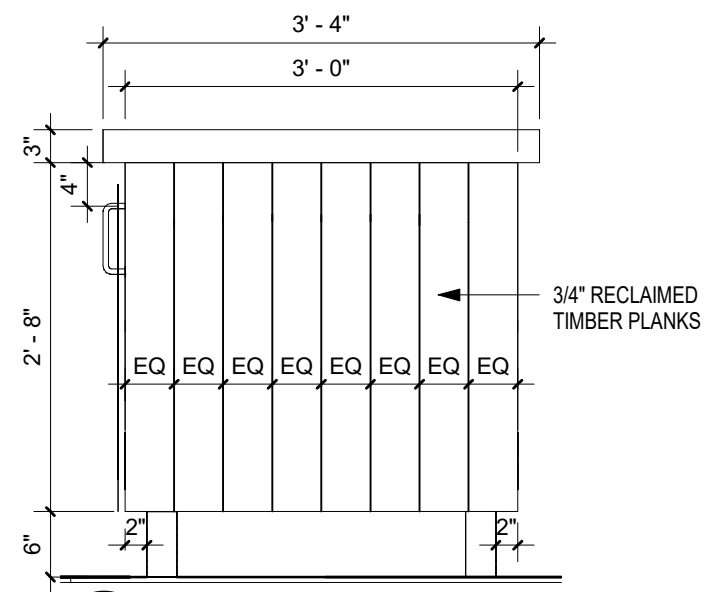
2 Elevation - Bar Cart Front
 A711 3/4" = 1'-0"



3 Elevation - Bar Cart Left Side
 A711 3/4" = 1'-0"



4 Elevation - Bar Cart Back
 A711 3/4" = 1'-0"



5 Elevation - Bar Cart Right Side
 A711 3/4" = 1'-0"



CUNNINGHAM
G R O U P

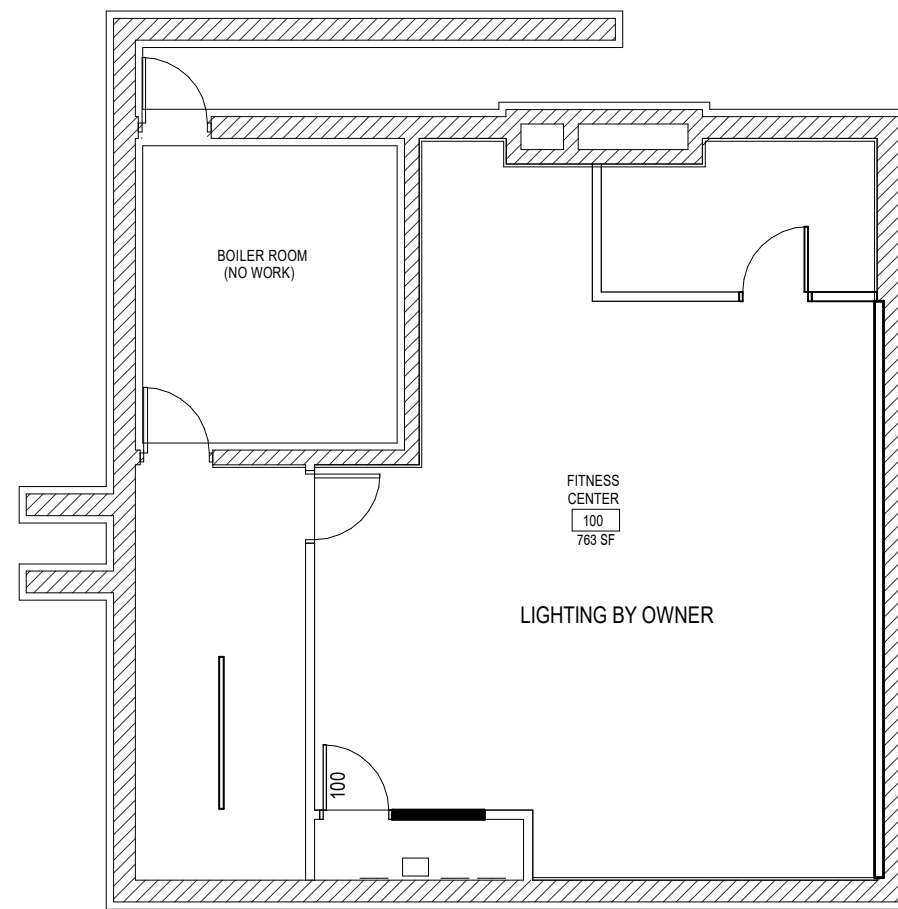
Cunningham Group
Architecture, Inc.
St. Anthony Main
201 Main St. SE
Suite 325
Minneapolis, MN
55414

Tel: 612 379 3400
Fax: 612 379 4400

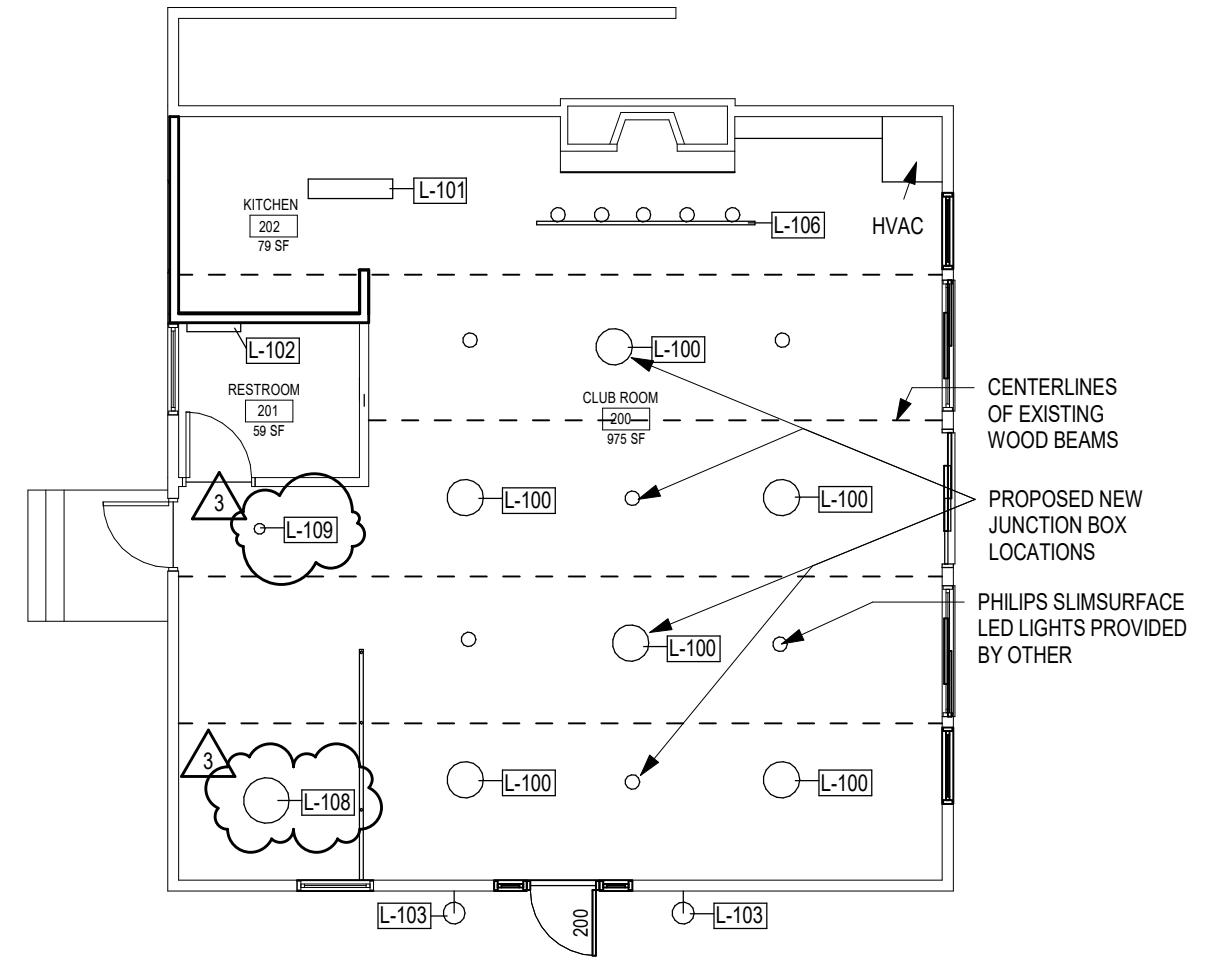
www.cunningham.com

General Notes - Reflected Ceiling Plan

1. SEE INTERIOR SPECIFICATION LIST FOR LIGHTING SPECS.
2. USE EXISTING JUNCTION BOXES FOR LIGHTING WHERE APPLICABLE.



1 Lancaster Village - Basement - Reflected Ceiling Plan / Electrical Plan
A800 1/8" = 1'-0"



2 Lancaster Village - Level 1 - Reflected Ceiling Plan / Electrical Plan
A800 1/8" = 1'-0"

Revisions		
No	Date	Description
3	12/21/17	Add'l Lighting

Date: _____
 Comm. No.: _____
 Drawn By: _____ Author
 Checked By: _____ Checker
 PIC/AIC: _____
 Document Phase: _____

Project Title
Lancaster Village

Sheet Number
A800

Copyright © 2017 by Cunningham Group Architecture, Inc. (All Rights Reserved)