

Reebok Geo Hex Trainer: Concept Development Sketches.

Exploded Tech Pack: Reebok Geo Hex Trainer



Xavier D. Rush

Z-Tech 90 - Final Concept Sketch.



REEBOK INTERNATIONAL LTD.

TECH PACK: PROJECT HEXALITE GEOMETRIC

STYLE NAME: HexGeo V1

US SIZE RANGE: 7-14

STYLE #: R1001

SEASON: SS26

DATE: 25-APR-2026

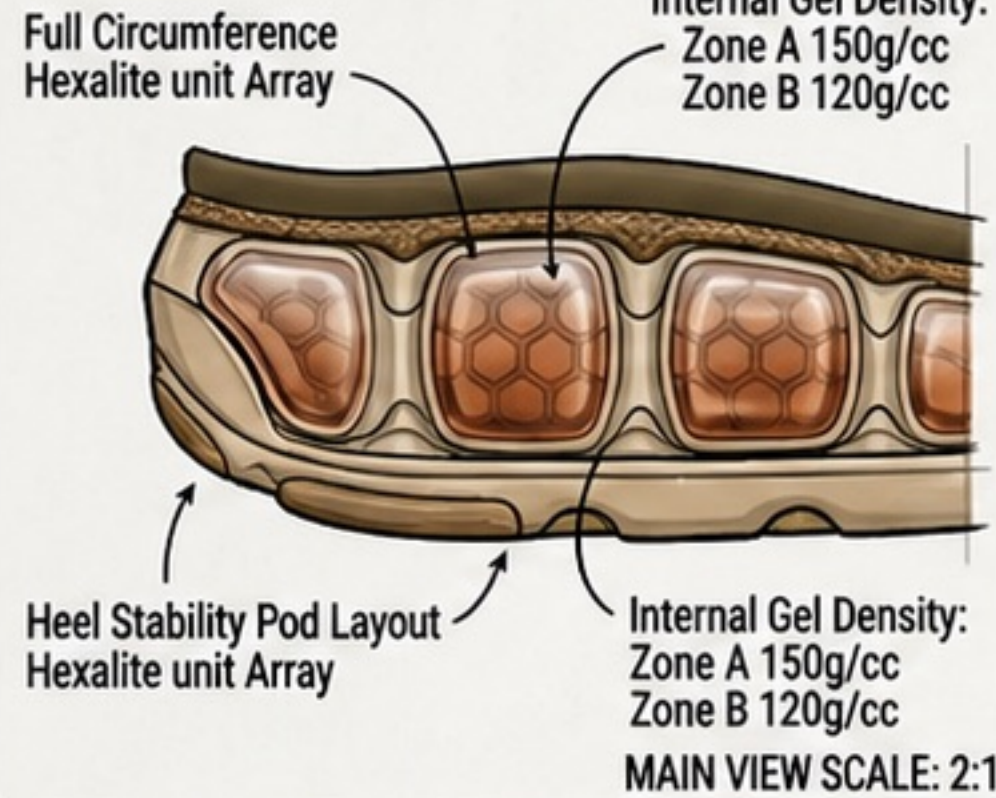
DATE: 25-APR-2026

PAGE 1 of 3

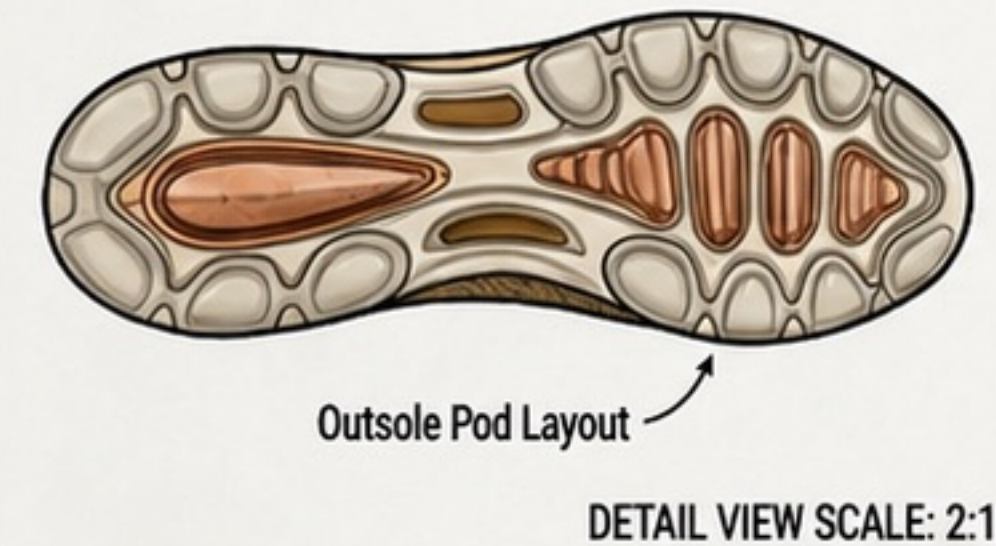
CONFIDENTIAL PRODUCTION SPEC

HEEL CUSHIONING UNIT CROSS-SECTION

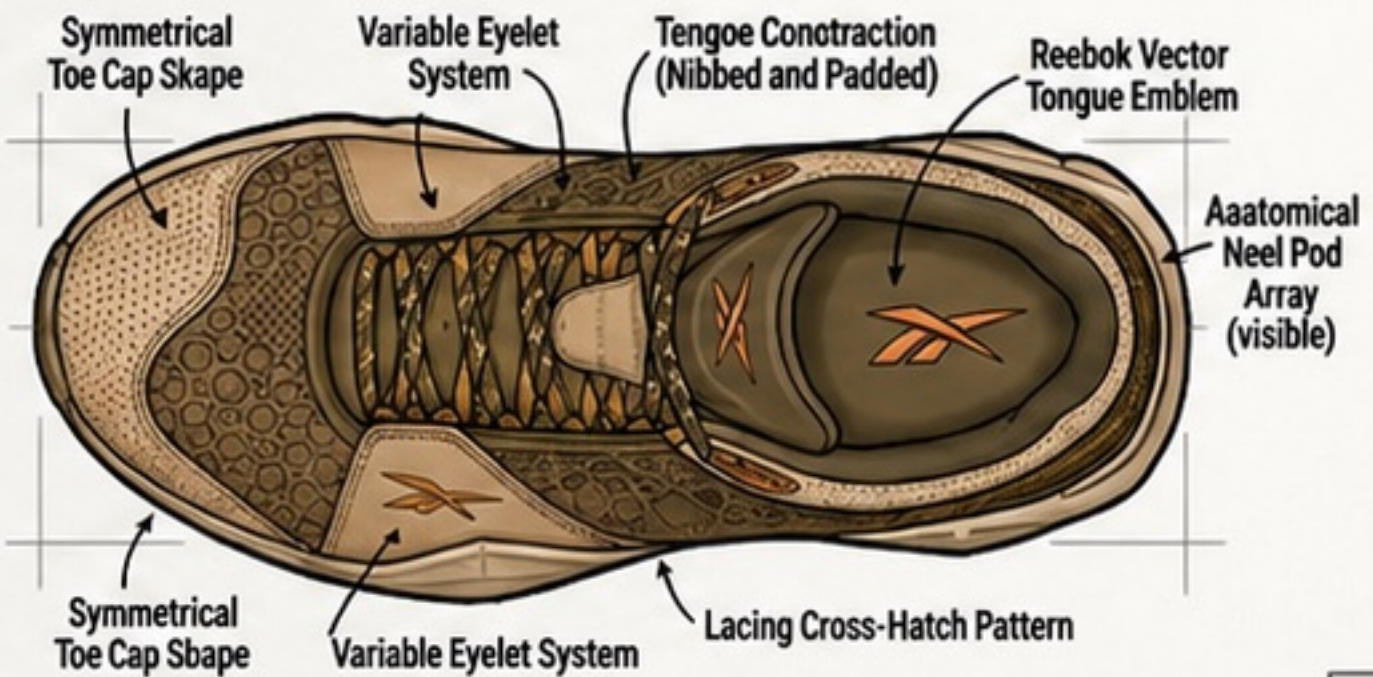
2:1 MASNIFIED DETAILS



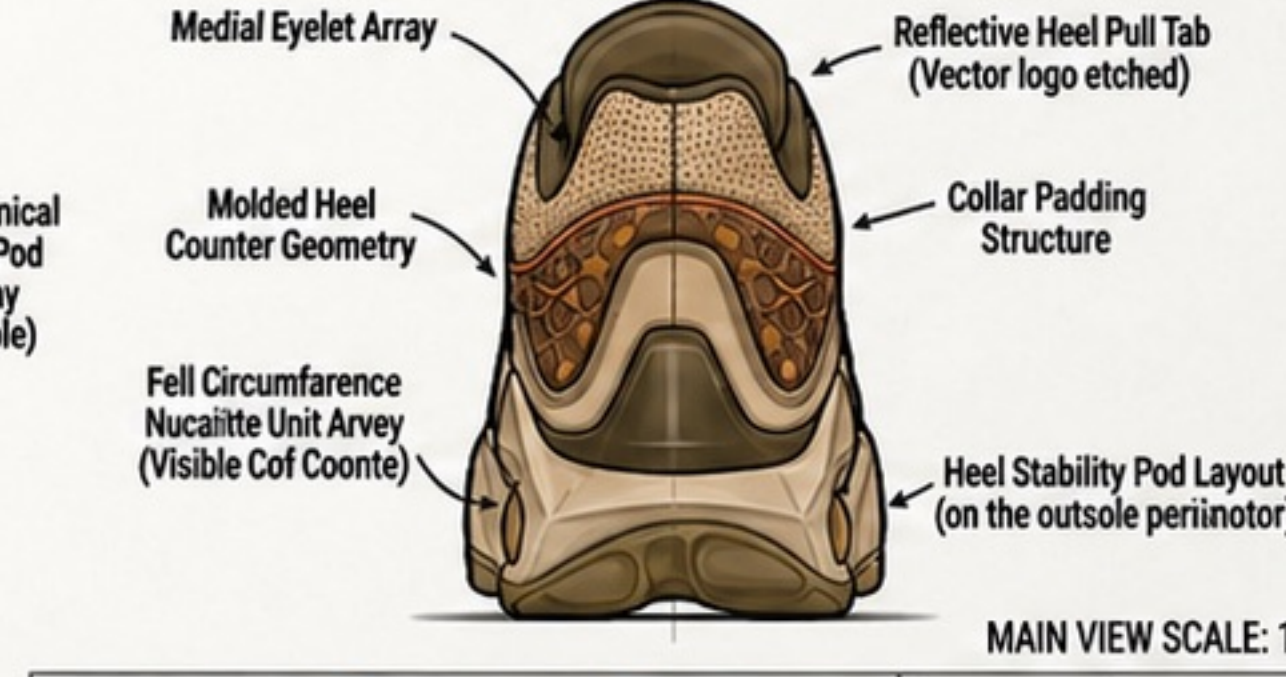
OUTSOLE POD LAYOUT (UNDERSIDE VIEW)



LATERAL VIEW



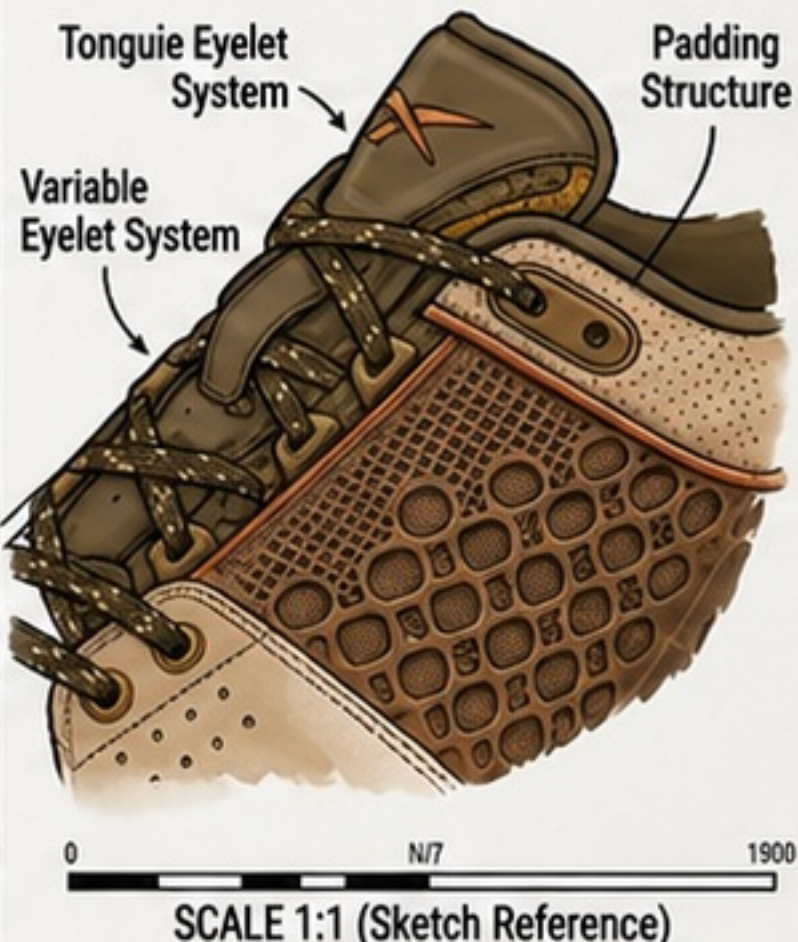
MEDIAL VIEW



PRIMARY COLORWAY: 'GEO-GOLD'



TONGUE & EYELET DETAIL CROSS-SECTION



MATERIALS PALETTE:
 Perforated leather
 Engineered mesh,
 TPU stability shank,
 Faceted copolymer,
 Hexalite units

0 50 100
 SCALE 1:1 (Sketch Reference)

BILL OF MATERIALS (BOM)

STITCHING SPECIFICATIONS

CONTROL LIST:

SAMPLE APPROVAL STATUS:

Part ID	Part Name	Material Spec	Color Spec (with swatches)	Processing	Supplier
U01	Toe Cap	Perforated Leather	Optic White	Precision Laser Perforated	RBK Leather Div.
U10	Main Mesh	Engineered Mesh	Kangaroo	Engineered Veating	RBK Tex Div.
U10	Heel Mesh	Engineered Mesh	Optic White	Engineered Veating	RBK Tex Div.
U11	Internal Units	Hexalite Gel	Copper Amber	Molded	RBK Polymer Div.
U12	Eyesets & Loops	Metal Accents	Antique Bronze	Cast	RBK Component Div.

A. Double lockstitch, 8-10 SPI, Upper panels.
 B. (Stays, or updated label to cover midfoot)

A. Perforation Size: 1.2mm dia.
 B. Mottled Lace Length: 54 in.

Pending Sample

DIMENSION & LAST SPECIFICATIONS

A. Perforation Size: 1.2mm dia.
 B. Mottled Lace Length: 54 in.

SAMPLE FACTORY:

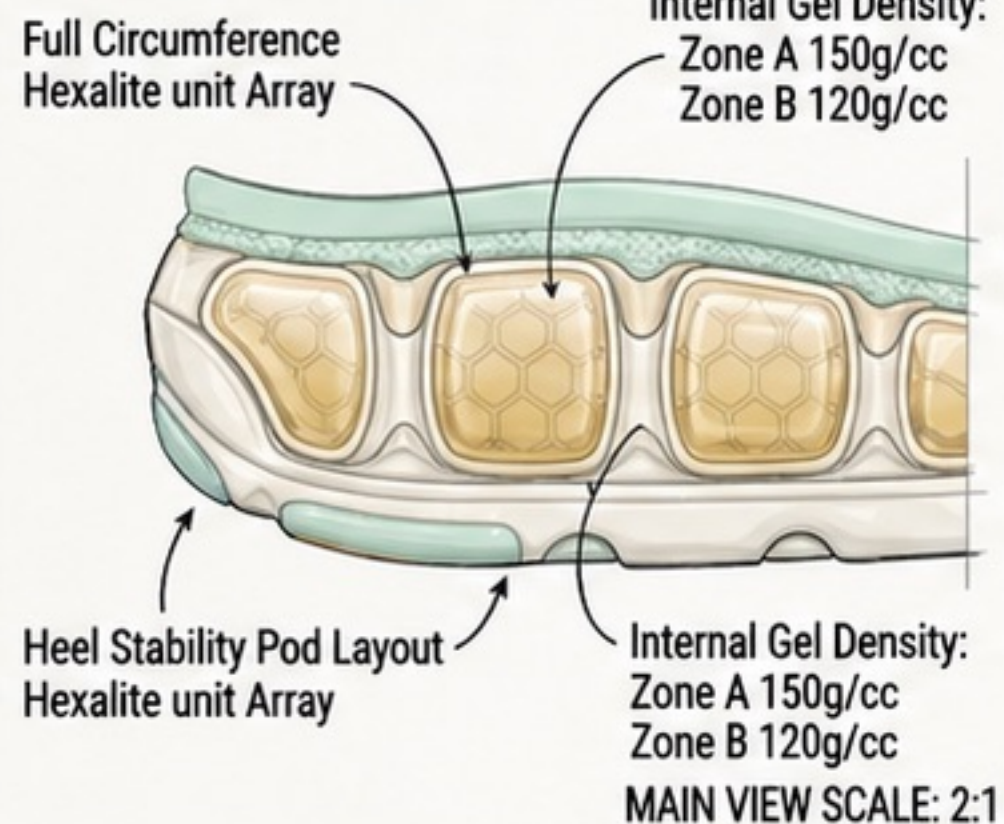
RBK-CN-1



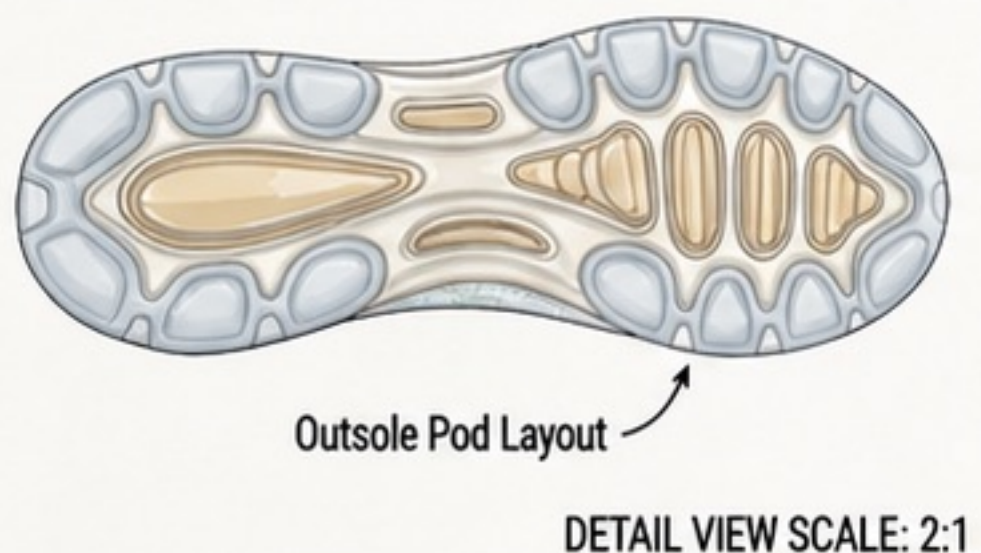


HEEL CUSHIONING UNIT CROSS-SECTION

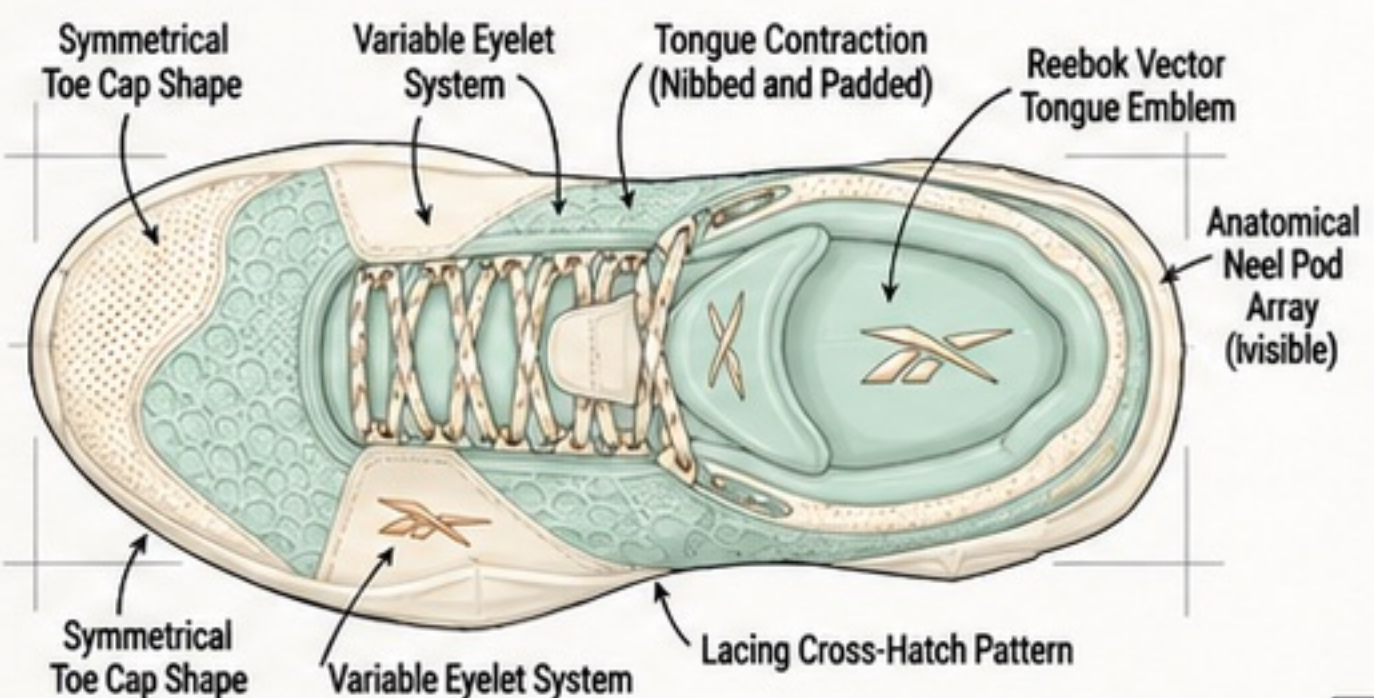
2:1 MAGNIFIED DETAILS



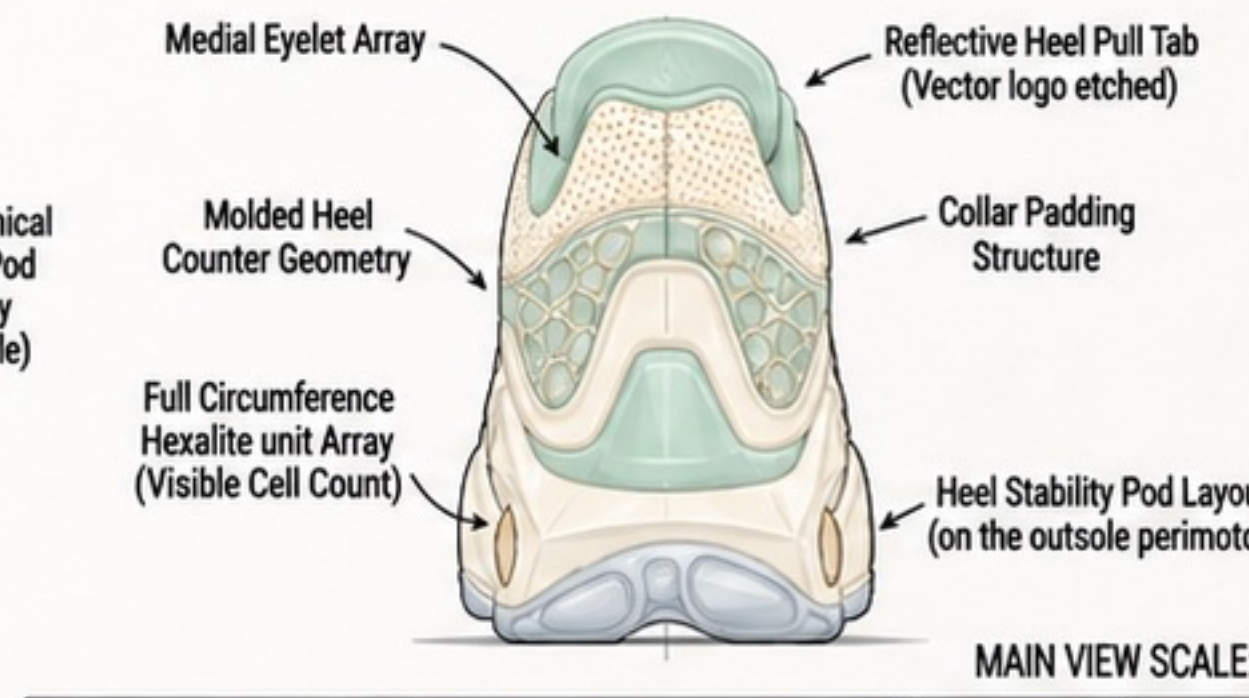
OUTSOLE POD LAYOUT (UNDERSIDE VIEW)



LATERAL VIEW



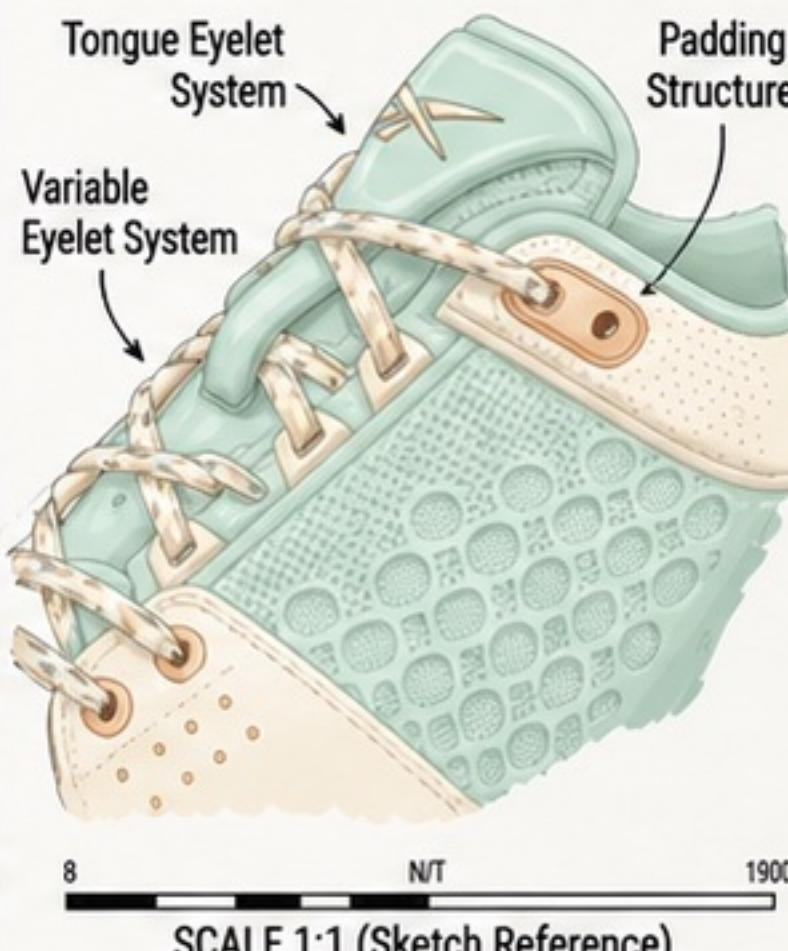
MEDIAL VIEW



PRIMARY COLORWAY: 'PASTEL RISE'



TONGUE & EYELET DETAIL CROSS-SECTION



MATERIALS PALETTE: ■ Perforated leather, ■ Engineered mesh, ■ TPU stability shank, ■ Faceted copolymer, ■ Hexalite units

8 N/T 1900
SCALE 1:1 (Sketch Reference)

BILL OF MATERIALS (BOM)

Part ID	Part Name	Material Spec	Color Spec (with swatches)	Processing	Supplier
U01	Toe Cap	Perforated Leather	■ Pastel Rise	Precision Laser Perforated	RBK Leather Div.
U10	Main Mesh	Engineered Mesh	■ Pastel Rise	Engineered Veating	RBK Tex Div.
U10	Heel Mesh	Engineered Mesh	■ Optic White	Engineered Veating	RBK Tex Div.
U11	Internal Units	Hexalite Gel	■ Gold	Molded	RBK Polymer Div.

STITCHING SPECIFICATIONS

A. Double lockstitch, 8-10 SPI, Upper panels.
B. (Stays, or updated label to cover midfoot)

DIMENSION & LAST SPECIFICATIONS

A. Perforation Size: 1.2mm dia.
B. Mottled Lace Length: 54 in.

CONTROL LIST:

A. Perforation Size: 1.2mm dia.
B. Mottled Lace Length: 54 in.

SAMPLE FACTORY:

RBK-CN-1

SAMPLE APPROVAL STATUS:

Pending Sample



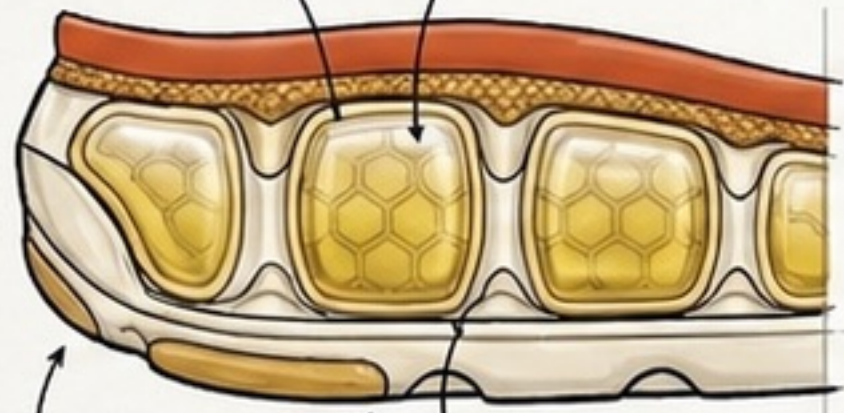


HEEL CUSHIONING UNIT CROSS-SECTION

2:1 MAGNIFIED DETAILS

Full Circumference Hexalite unit Array

Internal Gel Density:
Zone A 150g/cc
Zone B 120g/cc

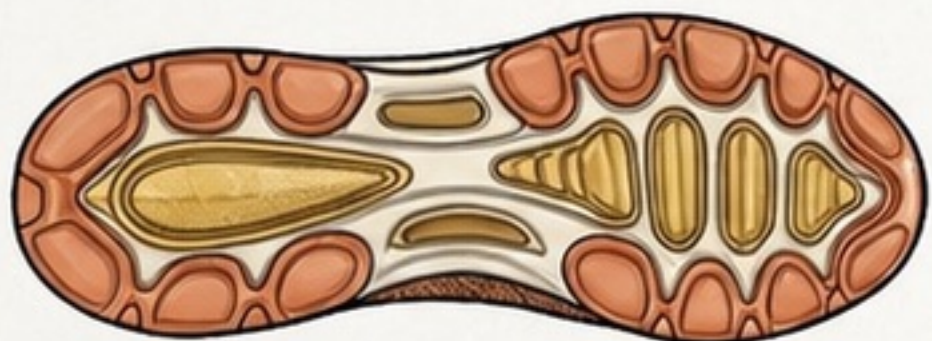


Heel Stability Pod Layout Hexalite unit Array

Internal Gel Density:
Zone A 150g/cc
Zone B 120g/cc

MAIN VIEW SCALE: 2:1

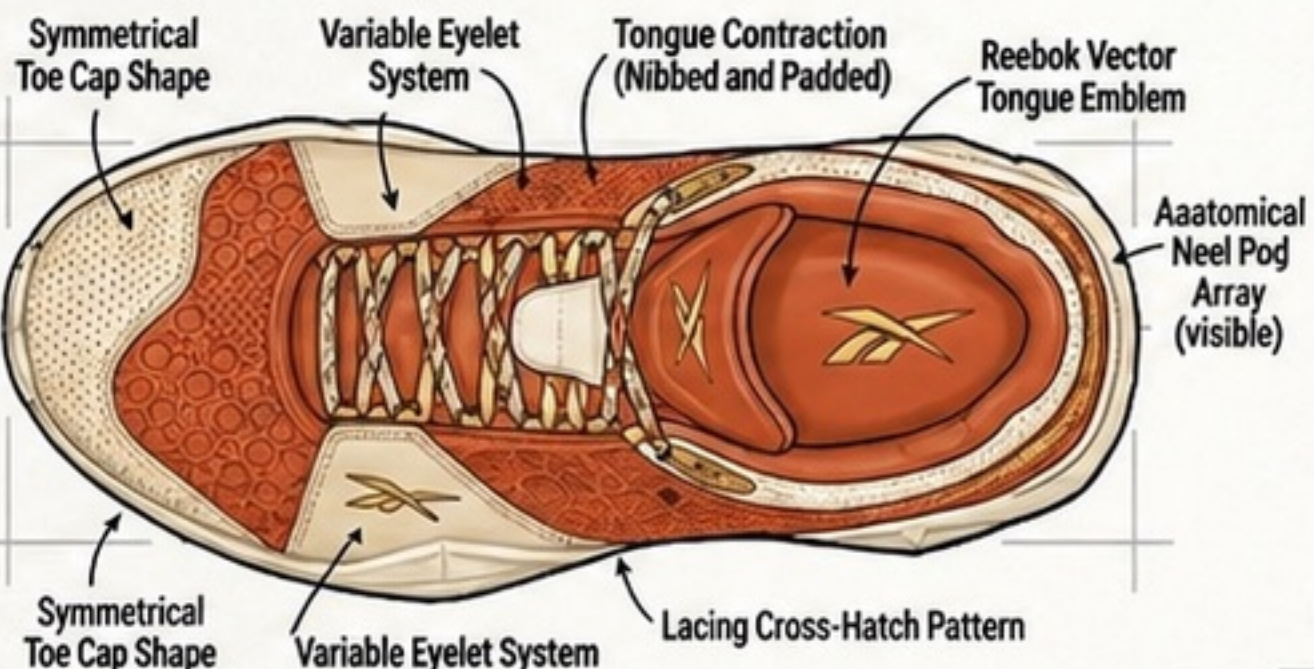
OUTSOLE POD LAYOUT (UNDERSIDE VIEW)



Outsole Pod Layout

DETAIL VIEW SCALE: 2:1

LATERAL VIEW



MEDIAL VIEW



MAIN VIEW SCALE: 1:1

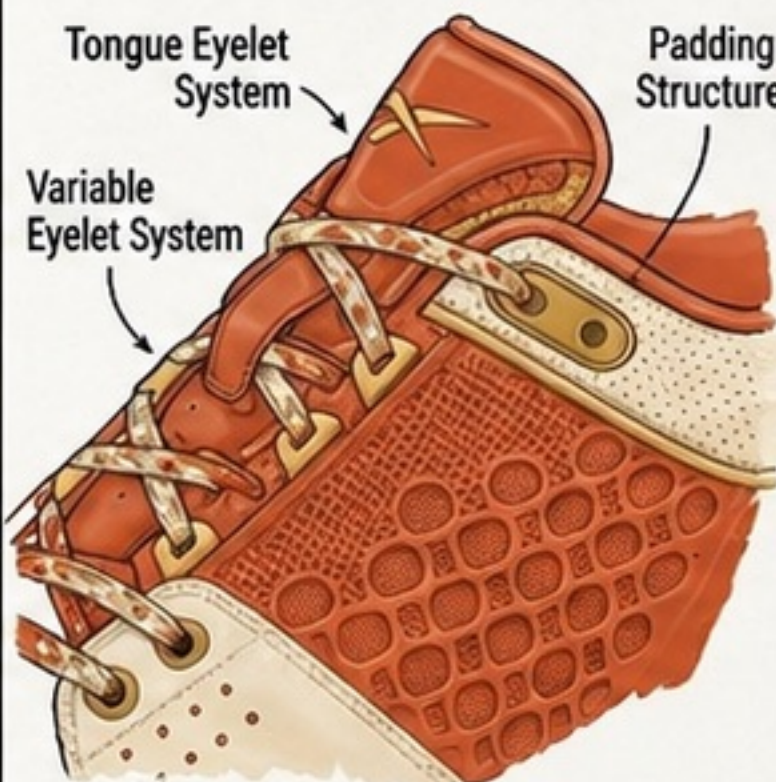
MATERIALS PALETTE: Perforated leather, Engineered mesh, TPU stability shank, Injected copolymer, Hexalite units

SCALE 1:1 (Sketch Reference)

PRIMARY COLORWAY: 'SUNSET VEIL'



TONGUE & EYELET DETAIL CROSS-SECTION



SCALE 1:1 (Sketch Reference)

BILL OF MATERIALS (BOM)

Part ID	Part Name	Material Spec	Color Spec (with swatches)	Processing	Supplier
U01	Toe Cap	Perforated Leather	Antique White	Precision Laser Perforated	RBK Leather Div.
U10	Main Mesh	Engineered Mesh	Sunset Veil	Engineered Veating	RBK Tex Div.
U10	Heel Mesh	Engineered Mesh	Antique White	Engineered Veating	RBK Tex Div.
U11	Internal Units	Hexalite Gel	Indian Gold	Molded	RBK Polymer Div.
U12	Eyelets & Loops	Metal Accents	Indian Gold	Cast	RBK Component Div.

STITCHING SPECIFICATIONS

A. Double lockstitch, 8-10 SPI, Upper panels.
B. (Stays, or updated label to cover midfoot)

DIMENSION & LAST SPECIFICATIONS

A. Perforation Size: 1.2mm dia.
B. Mottled Lace Length: 54 in.

CONTROT LIST:

A. Perforation Size: 1.2mm dia.
B. Mottled Lace Length: 54 in.

SAMPLE APPROVAL STATUS:

Pending Sample

SAMPLE FACTORY:

RBK-CN-1





REEBOK INTERNATIONAL LTD.

TECH PACK: PROJECT HEXALITE GEOMETRIC

STYLE NAME: HexGeo V1

US SIZE RANGE: 7-14

STYLE #: R1001

SEASON: SS26

DATE: 25-APR-2026

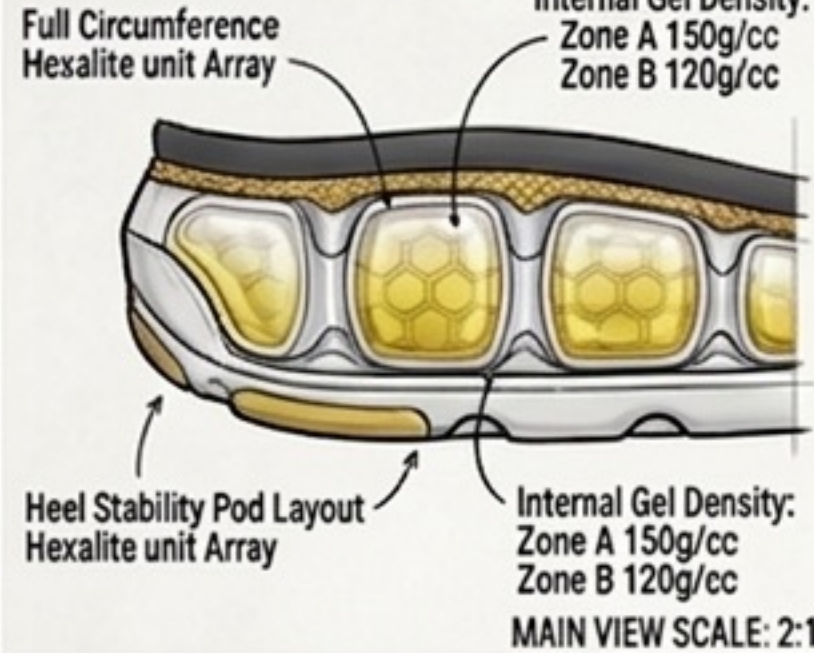
DATE: 25-APR-2026

PAGE 1 of 3

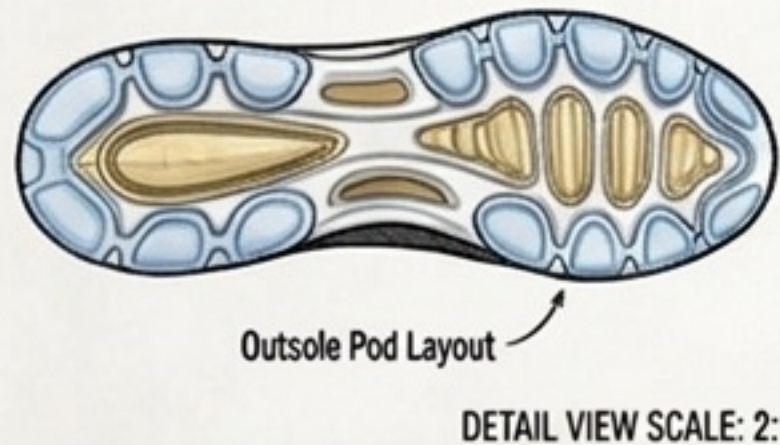
CONFIDENTIAL PRODUCTION SPEC

HEEL CUSHIONING UNIT CROSS-SECTION

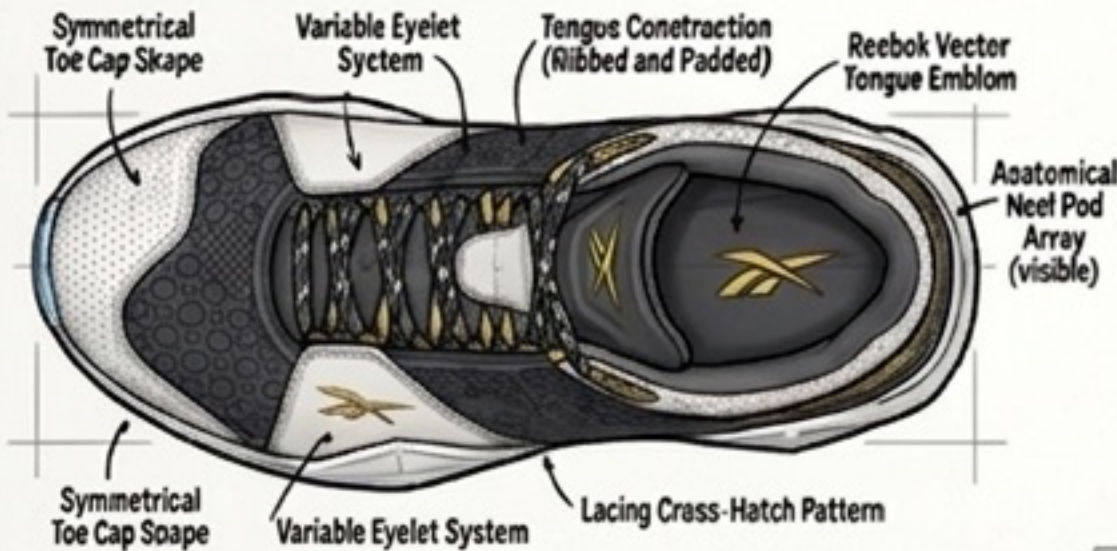
2:1 MASNIFIED DETAILS



OUTSOLE POD LAYOUT (UNDERSIDE VIEW)



LATERAL VIEW



MEDIAL VIEW



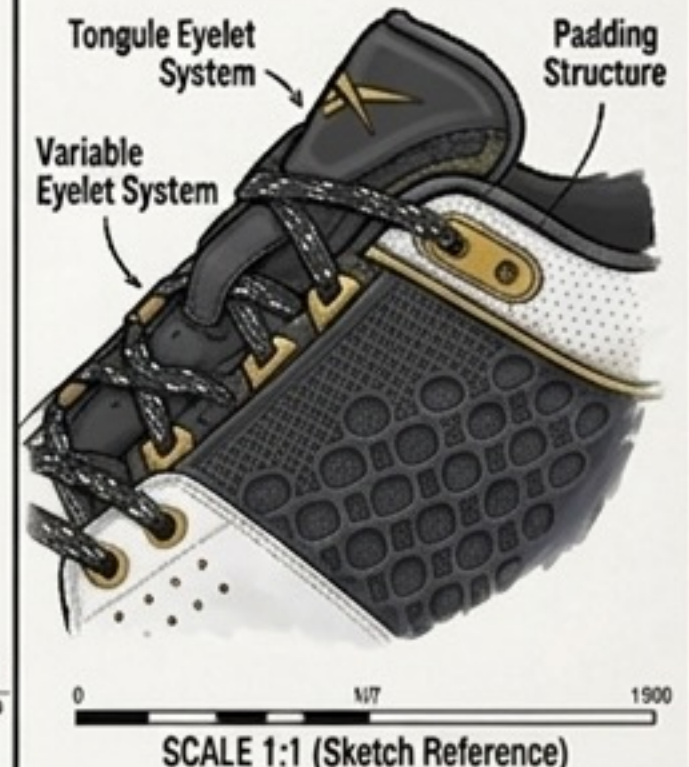
MATERIALS PALETTE: Perforated leather Engineered mesh, TPU stability shank, Focused copy/marr, Hexalite units

SCALE 1:1 (Sketch Reference)

PRIMARY COLORWAY: 'GEO-GOLD'



TONGUE & EYELET DETAIL CROSS-SECTION



SCALE 1:1 (Sketch Reference)

BILL OF MATERIALS (BOM)

Part ID	Part Name	Material Spec	Color Spec (with swatches)	Processing	Supplier
U01	Toe Cap	Perforated Leather	<input type="checkbox"/> Optic White	Precision Laser Perforated	RBK Leather Div.
U10	Main Mesh	Engineered Mesh	<input checked="" type="checkbox"/> Charcoal	Engineered Veating	RBK Tex Div.
U10	Heel Mesh	Engineered Mesh	<input type="checkbox"/> Optic White	Engineered Veating	RBK Tex Div.
U11	Internal Units	Hexalite Gel	<input checked="" type="checkbox"/> Gold	Molded	RBK Polymer Div.
U12	Eyesets & Loops	Metal Accents	<input checked="" type="checkbox"/> Gold	Cast	RBK Component Div.

STITCHING SPECIFICATIONS

A. Double lockstitch, 8-10 SPI, Upper panels.
B. (Stays, or updated label to cover midfoot)

DIMENSION & LAST SPECIFICATIONS

A. Perforation Size: 1.2mm dia.
B. Mottled Lace Length: 54 in.

CONTROL LIST:

A. Perforation Size: 1.2mm dia.
B. Mottled Lace Length: 54 in.

SAMPLE APPROVAL STATUS:

Pending Sample

SAMPLE FACTORY:

RBK-CN-1



REEBOK PROJECT HEXGEO V1: INSPIRATION BOARD

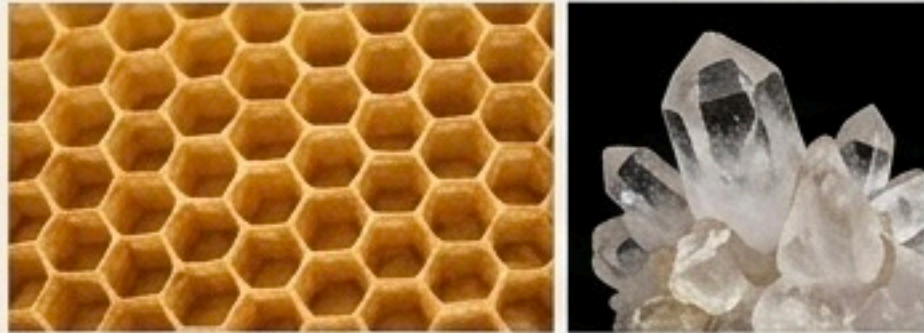
STYLE: R1001, SS26, US Size Range 7-14

DESIGNER ATTRIBUTION: XAVIER RUSH



CONFIDENTIAL
INSPIRATION SPEC

GEOMETRIC LATTICE STRUCTURES

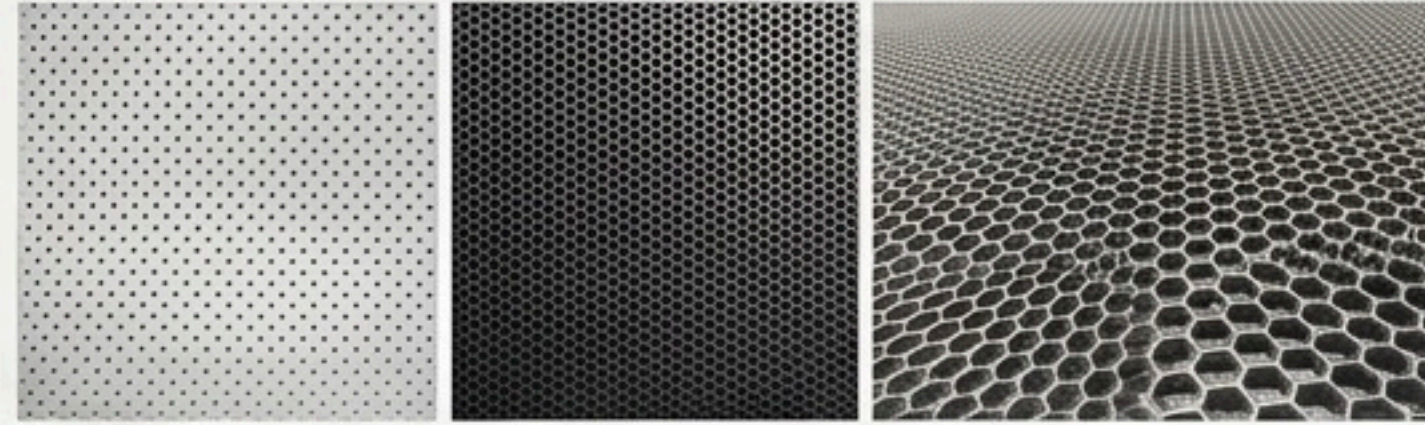


FLAWLESS HOATTICE STRUCTURES



FRACTAL TESSALATIONS

MATERIAL TEXTURE



PRECISION LASER PERFORATION

ENGINEERED HONEYCOMB MESH TENSION



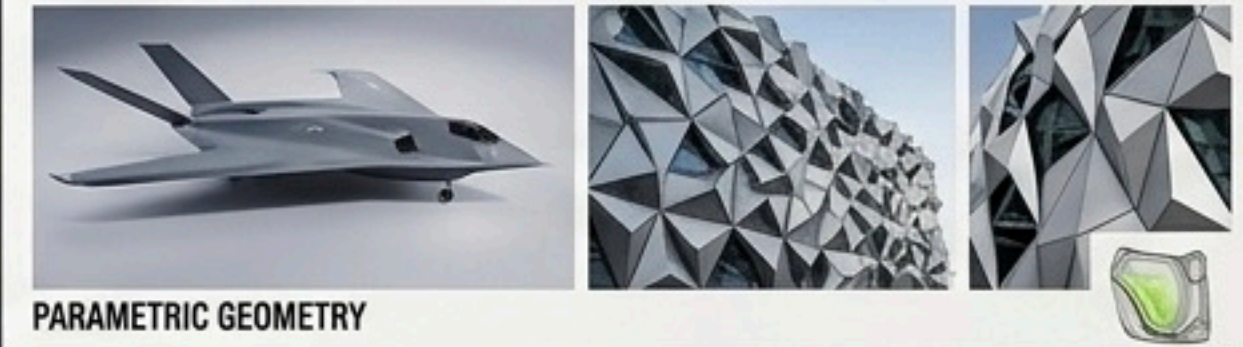
ADVANCED PERFORMANCE POLYMERS

HIGH-QUALITY LEATHER SWATCHES

STEALTH & ARCHITECTURE



STEALTH AERODYNAMICS



PARAMETRIC GEOMETRY

MECHANICS & CUSHIONING



HEXALITE LATTICE CUSHIONING

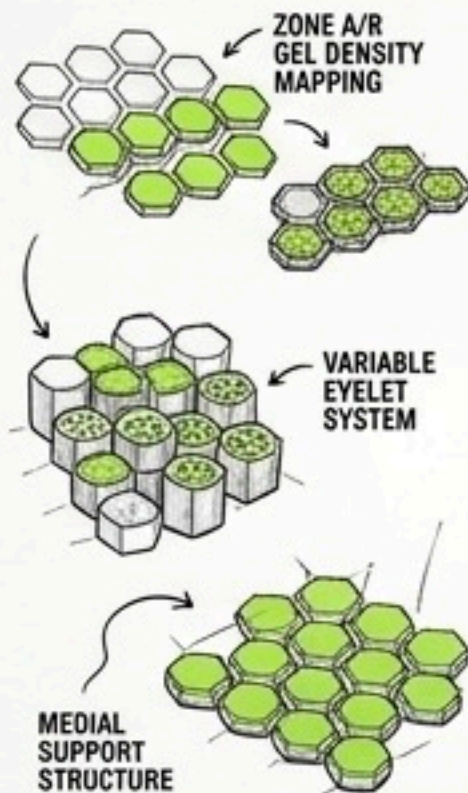
DYNAMIC STABILITY NETWORKS



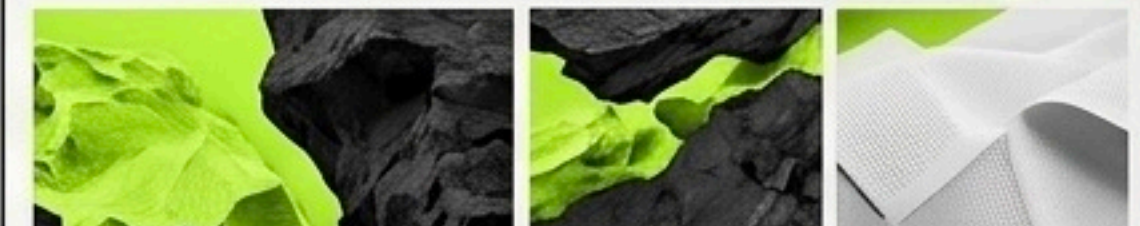
HEXALITE LATTICE FLOYOHIT

DYNAMIC STABILITY NETWORKS

KINETIC ENERGY TRANSFER



COLOR & LIGHT



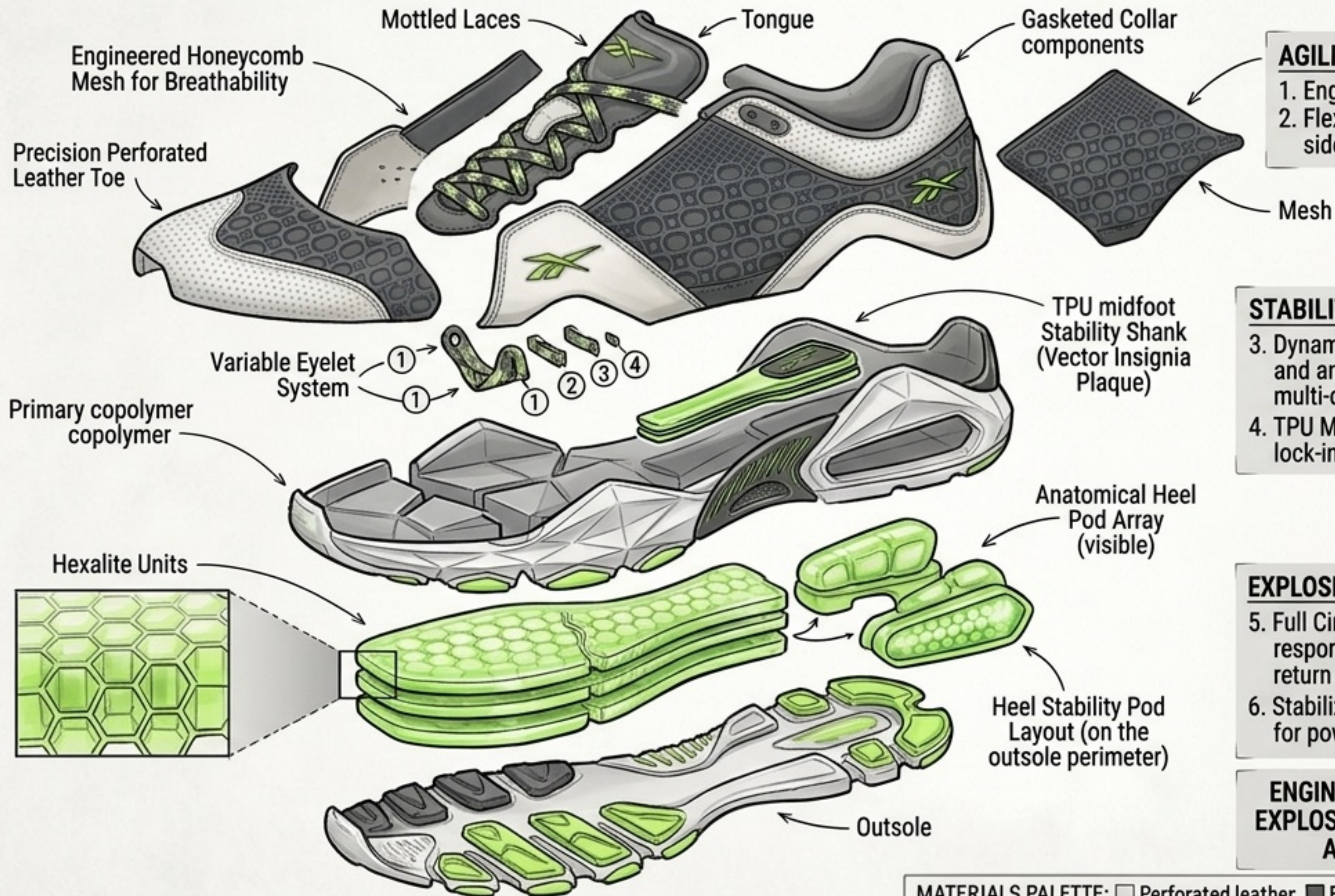
PANTONE 11-0601

PANTONE 19-4001

381C Lime Grne



PROJECT HEXALITE GEOMETRIC: EXPLODED VIEW & TRAINING TECH EXPLAINED



AGILITY & AGILITY-TRAINING BENEFITS:

1. Engineered Breathability for heat management.
2. Flexible Support from perforated leather for side-to-side agility without sacrificing airflow.

STABILITY & LIFTING-TRAINING BENEFITS:

3. Dynamic Medial Shank for multi-directional control and anti-pronation support during dynamic multi-directional training.
4. TPU Midfoot Shank ensures torsional rigidity and lock-in for stable lifting and power transfer.

EXPLOSIVE POWER & IMPACT-TRAINING BENEFITS:

5. Full Circumference Hexalite Unit Array provides responsive, tuned hexagonal cushioning for energy return in explosive jumps and major impact forces.
6. Stabilized Heel Pods create a secure, stable base for power transfer and precise footwork.

ENGINEERED SYSTEM OPTIMIZED FOR AGILITY, EXPLOSIVE POWER, AND UNWAVERING STABILITY ACROSS ALL TRAINING DISCIPLINES.



REEBOK INTERNATIONAL LTD.

TECH PACK: PROJECT HEXALITE GEOMETRIC

STYLE NAME: HexGeo V1

US SIZE RANGE: 7-14

STYLE #: R1001

SEASON: SS26

DATE: 25-APR-2026

DATE: 25-APR-2026

PAGE 1 of 3

CONFIDENTIAL PRODUCTION SPEC

HEEL CUSHIONING UNIT CROSS-SECTION

2:1 MAGNIFIED DETAILS

Full Circumference Hexalite unit Array

Internal Gel Density:
Zone A 150g/cc
Zone B 120g/cc



Heel Stability Pod Layout Hexalite unit Array

Internal Gel Density:
Zone A 150g/cc
Zone B 120g/cc

MAIN VIEW SCALE: 2:1

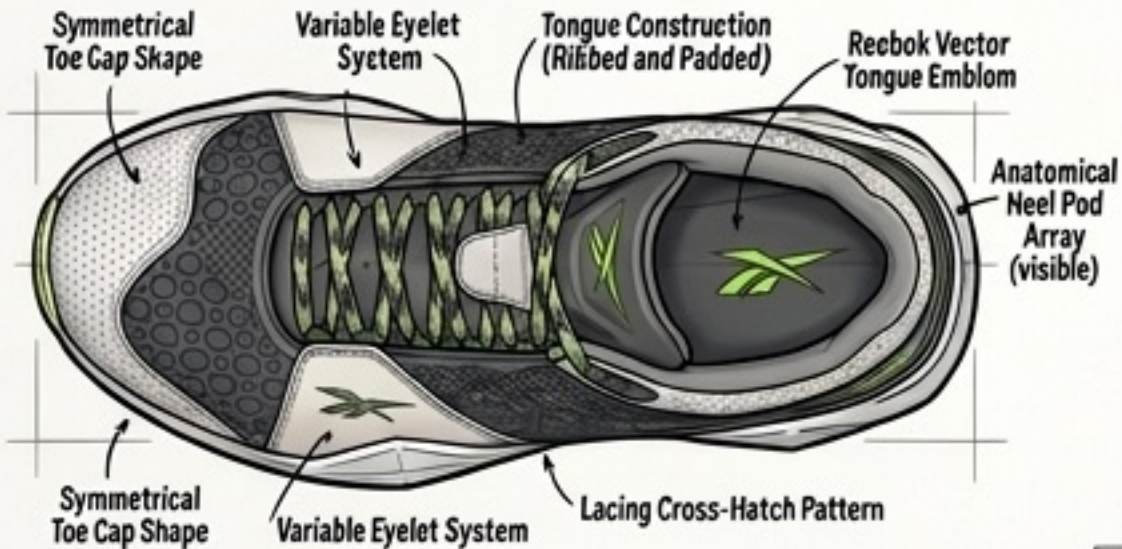
OUTSOLE POD LAYOUT (UNDERSIDE VIEW)



Outsole Pod Layout

DETAIL VIEW SCALE: 2:1

LATERAL VIEW



MEDIAL VIEW



MAIN VIEW SCALE: 1:1

MATERIALS PALETTE: Perforated leather, Engineered mesh, TPU stability shank, Faceted copolymer, Hexalite units

SCALE 1:1 (Sketch Reference)

PRIMARY COLORWAY: 'GEO-LIME'



TONGUE & EYELET DETAIL CROSS-SECTION



SCALE 1:1 (Sketch Reference)

BILL OF MATERIALS (BOM)

Part ID	Part Name	Material Spec	Color Spec (with swatches)	Processing	Supplier
U01	Toe Cap	Full Grain Leather	<input type="checkbox"/> Optic White	Precision Laser Perforated	RBK Leather Div.
U02	Toe Cap	Full Grain Leather	<input checked="" type="checkbox"/> Engineered mesh	Precision Laser Perforated	RBK Leather Div.
U10	Main Mesh	Lime Green	<input checked="" type="checkbox"/> Pantone 381C	Engineered Veating	RBK Tex Div.
U10	Main Mesh	Engineered Monofilament Mesh	<input checked="" type="checkbox"/> Charcoal	Seamless Integrated Weave	RBK Tex Div.

STITCHING SPECIFICATIONS

A. Double lockstitch, 8-10 SPI, Upper panels.
B. Bartack reinforcement, eyelet ends.

DIMENSION & LAST SPECIFICATIONS

A. Perforation Size: 1.2mm dia.
B. Mottled Lace Length: 54 in.

CONTROL LIST:

A. Perforation Size: 1.2mm dia.
B. Mottled Lace Length: 54 in.

SAMPLE APPROVAL STATUS:

Pending Sample

SAMPLE FACTORY:

RBK-CN-1



HEXALITE TECH TRAINER CONCEPT - MULTI-VIEW STUDY



LATERAL
HEX-GRID MESH

VECTOR LOGO
OVERLAY

FACETED GEOMETRIC
MIDSOLE

VISIBLE HEXALITE
WINDOW

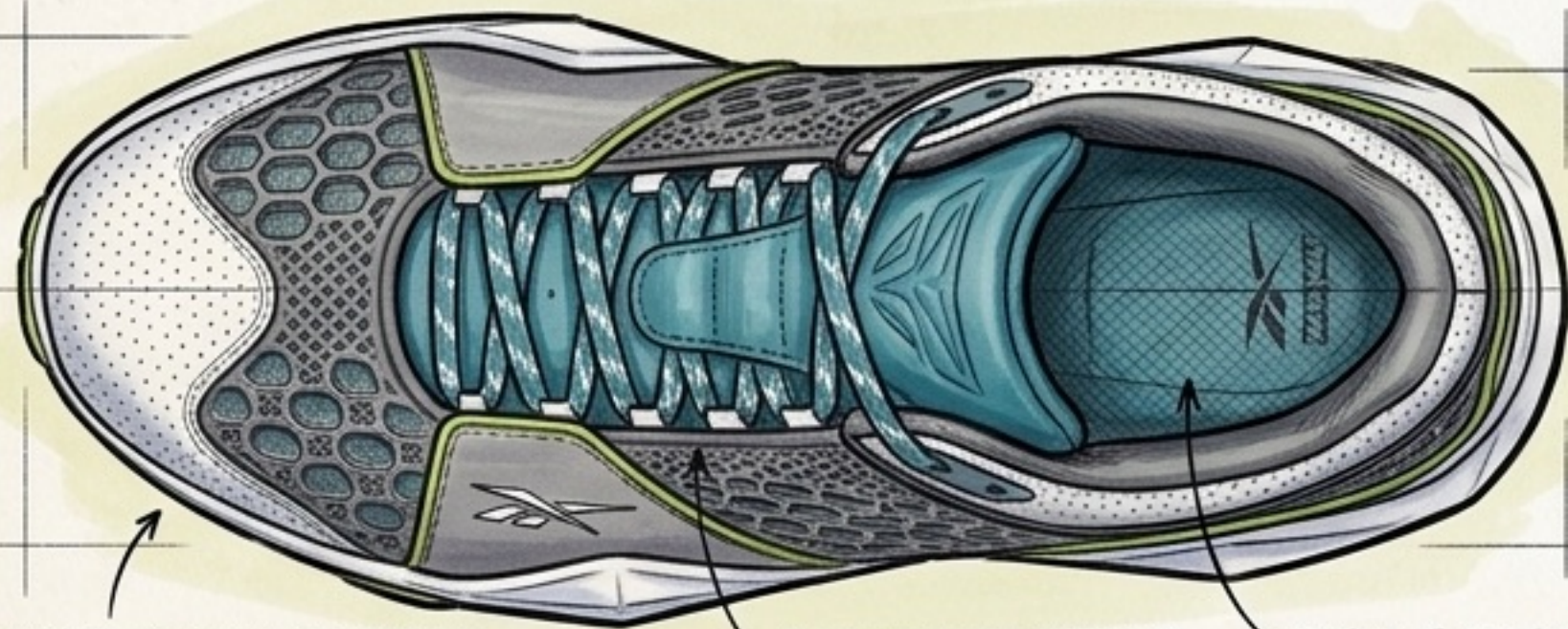


INNER COLLAR
LINING

MEDIAL UNIFORM
MESH PANEL

MEDIAL MIDSOLE
GEOMETRY
(INNER ARCH)

INTERNAL HEXALITE
STRUCTURE VIEW



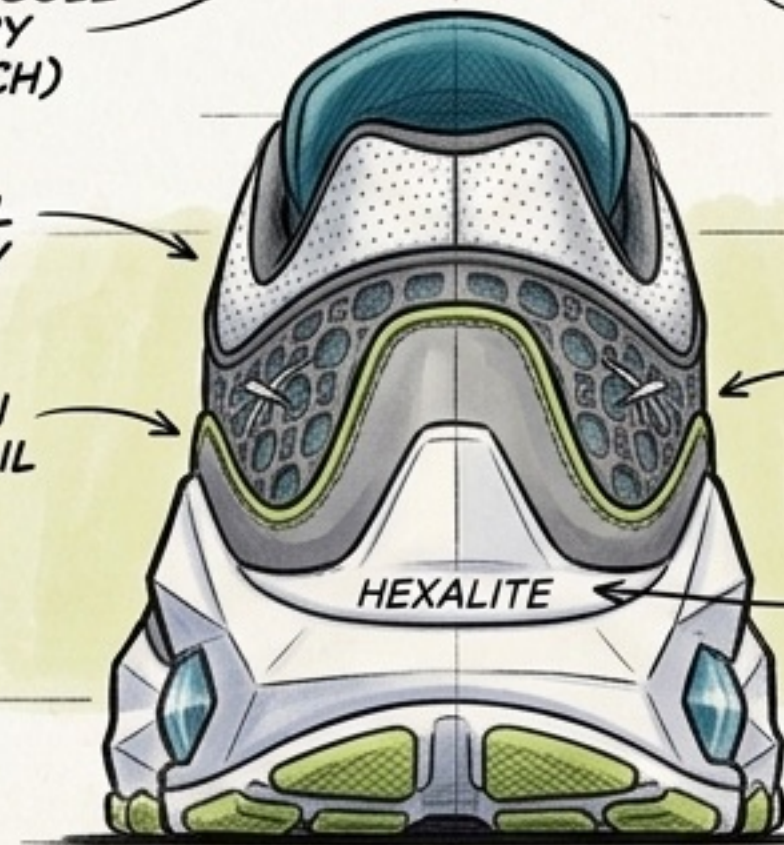
PERFORATED TOE BOX
(VENTILATION)

PATTERNED LACES
(DETAIL)

INSOLE LOGO
(DETAIL)

REAR HEEL
GEOMETRY

LIME GREEN
PIPING DETAIL



FULL HEXALITE
WINDOW VIEW

CENTERED
HEXALITE PRINT

OUTSOLE
TRACTION PODS

HEXALITE