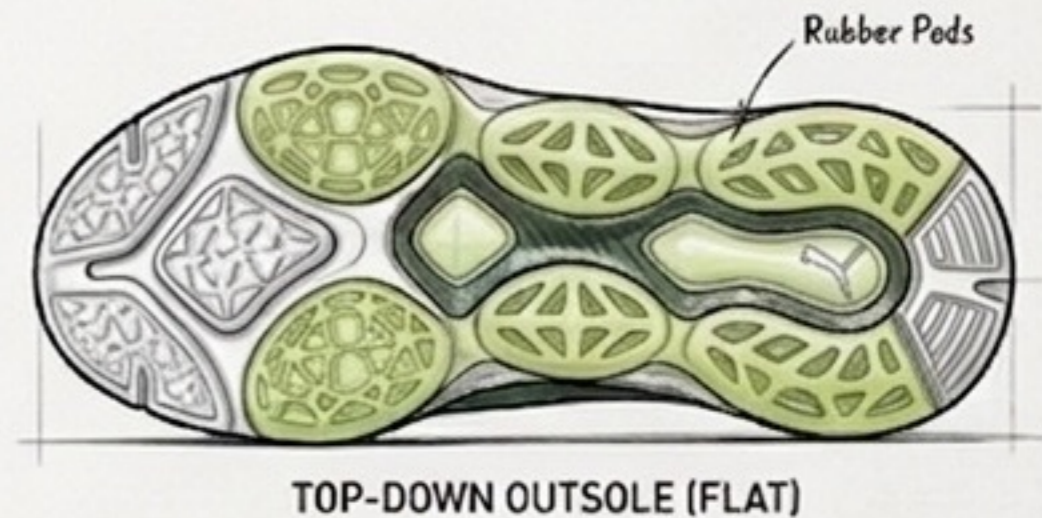
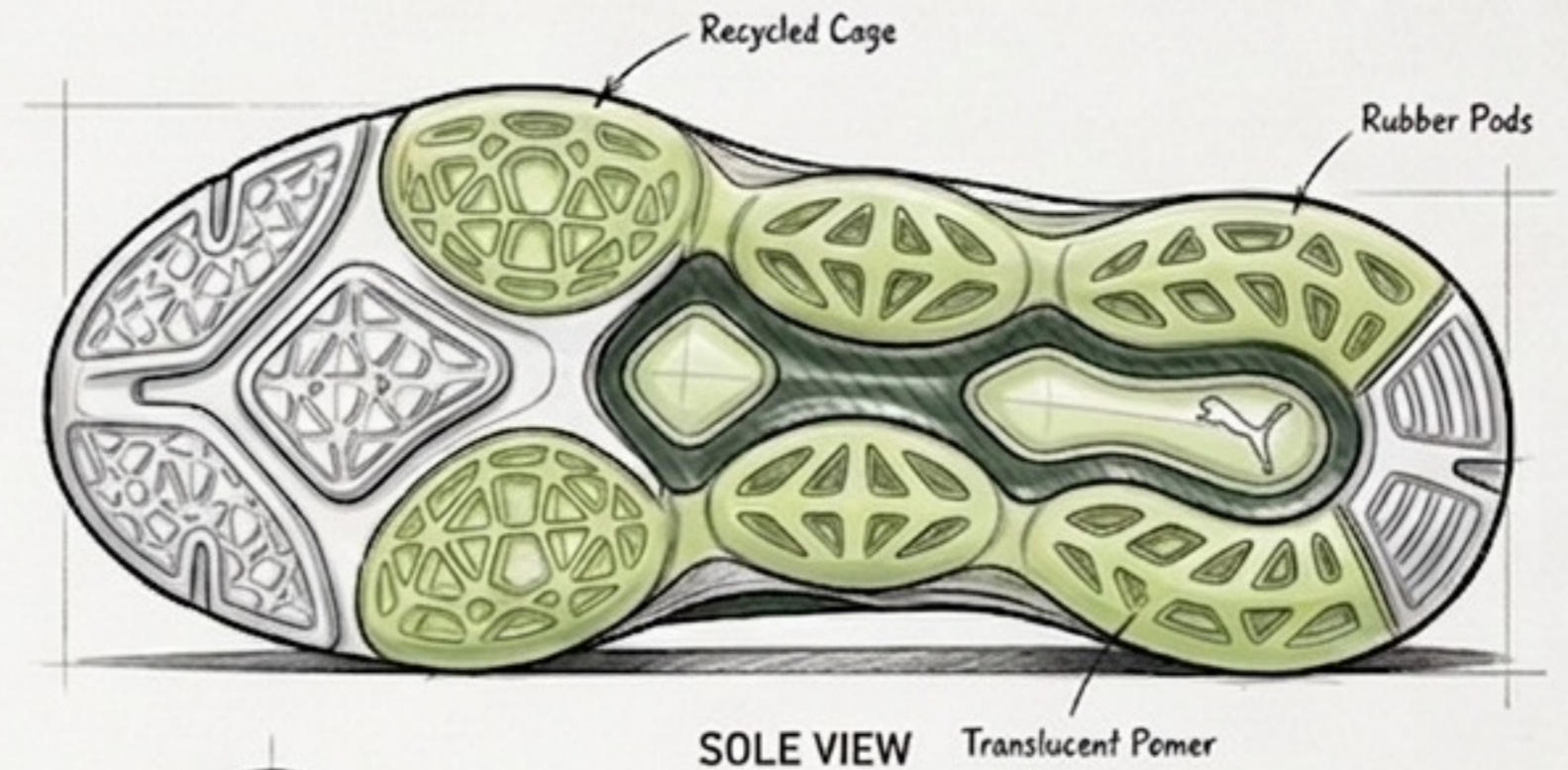


PUMA DESIGN: THE PUMA FLAU'JAE FLOW

TECHNICAL SPECIFICATION SHEET



KEY INNOVATIONS & TECHNOLOGY CALLOUTS



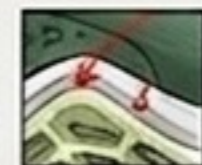
1. GEOCELL CAGE MIDSOLE TECHNOLOGY: Structural lattice architecture for dynamic energy return and zonal cushioning.



2. GEOMETRIC VENTILATION GRID: Precision-cut pattern for optimized breathability and weight reduction.



3. ENGINEERED MESH UPPER: Sustainably sourced materials with variable density for comfort and support.



4. DYNAMIC TRANSITION FORMSTRIP: Integrated support system for controlled midfoot transition.