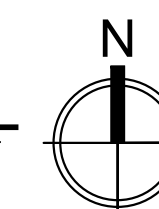


INTERSTATE 10


SITE PLAN & PATH OF TRAVEL

SCALE: 1/32" = 1'-0"



SYMBOL LEGEND

→ ARROWS INDICATE "PATH OF TRAVEL" TO ACCESSIBLE PARKING STALL.

--- PROPERTY LINE
 PARKING COUNT

NOTE:
 ALL EXISTING PARKING STALLS ARE TO REMAIN.

KEYNOTES

- 1 EXISTING RAMP WITH DETECTABLE WARNING TO REMAIN.
- 2 EXISTING VAN STALL WITH ACCESS AISLE AND SIGNAGE.
- 3 EXISTING ACCESSIBLE TOW-AWAY WARNING SIGNAGE.
- 4 EXISTING PRIMARY ENTRANCE.
- 5 EXISTING TRASH ENCLOSURE.
- 6 EXISTING ACCESSIBLE STALL, ACCESS AISLE AND SIGNAGE TO REMAIN.
- 7 GENERAL CONTRACTOR TO CONFIRM IF THERE IS AN EXISTING KNOX BOX. IF KNOX BOX IS NOT FOUND, PROVIDE SURFACE MOUNT KNOX BOX.
- 8 BUILDING ADDRESS IDENTIFICATION SIGNAGE PER CBC 2019 502.1.

PARKING TABLE

BUILDING AREA:

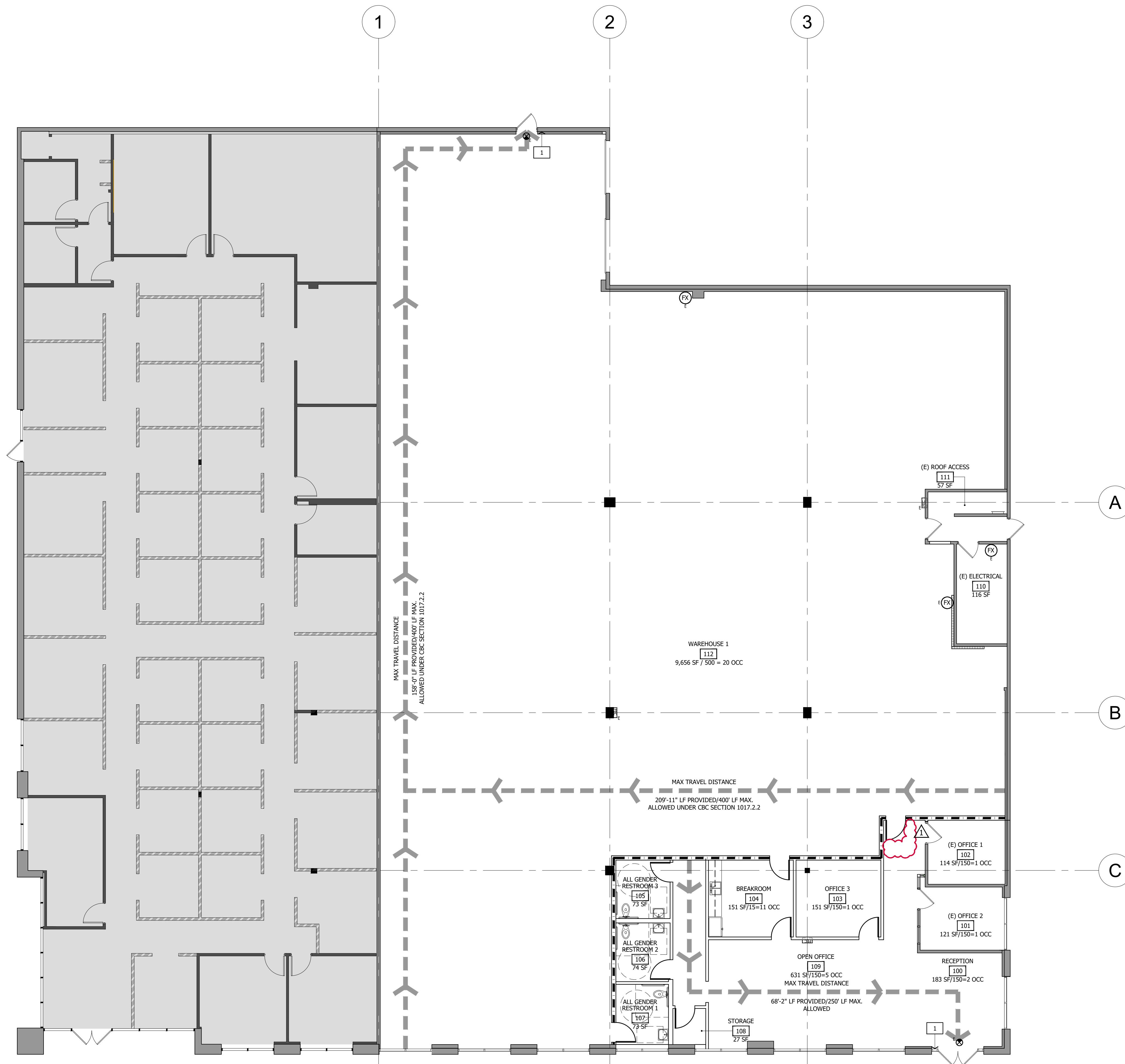
TOTAL GROSS OFFICE (B) AREA AT SUITE B:	1,827 S.F.
TOTAL GROSS WAREHOUSE (S-1) AREA AT SUITE B:	10,256 S.F.
TOTAL GROSS AREA:	12,833 S.F.

PARKING REQUIREMENTS:

OFFICE (B):	1/250 S.F.	1,827 / 250 = 8 STALLS
WAREHOUSE (S-1):	1/1000 S.F.	10,256 / 1000 = 11 STALLS
TOTAL REQUIRED:		19 STALLS
TOTAL PROVIDED:		98 STALLS (EXISTING)
ACCESSIBLE PARKING REQUIRED PER TABLE 11B-208.2:	1 STALL	
ACCESSIBLE PARKING PROVIDED:	1 STALL (EXISTING VAN ACCESSIBLE)	

SHEET NO.

SP-1



OCCUPANCY & EGRESS PLAN
SCALE: 1/8" = 1'-0"

SYMBOLS LEGEND

- INDICATES AREA NOT IN CONTRACT (N.I.C.) OR NOT A PART
- EXISTING TO REMAIN
- NEW DEMISING/INSULATED PARTITION TO STRUCTURE ABOVE.
- NEW INTERIOR NON STRUCTURAL PARTITION TO UNDERSIDE OF CEILING GRID.
- NEW DOOR ASSEMBLY - SEE CONSTRUCTION PLAN
- EXISTING DOOR ASSEMBLY TO REMAIN
- TRAVEL DISTANCE
- EXISTING EXIT
- EXIT SIGNAGE WITH EMERGENCY 90-MIN. BATTERY PACK.
- DIRECTIONAL EXIT SIGNAGE WITH EMERGENCY 90-MIN. BATTERY PACK.
- FIRE EXTINGUISHER CABINET - 2-A, 10-B, C. SEE DETAIL # A-1.6
- FIRE EXTINGUISHER - 2-A, 10-B, C
- "E" DENOTES EXISTING TO REMAIN
- "R" DENOTES RELOCATED AS SHOWN

KEYNOTES

- 1 INSTALL TACTILE EXIT SIGNAGE AT 48"-60" HIGH AT LATCH SIDE OF DOOR PER CBC SEC 11B-703.4.1. SEE DETAIL 12/A-0.2

OCCUPANCY & PLUMBING TABLE

OCCUPANCY CALCULATIONS

'B' OCCUPANCY
 RECEPTION 183 S.F. / 150 = 2 OCCUPANTS
 OFFICES 386 S.F. / 150 = 3 OCCUPANTS
 OPEN OFFICE 631 S.F. / 150 = 5 OCCUPANTS
 BREAKROOM 151 S.F. / 15 = 11 OCCUPANTS
 RESTROOMS (ACCESSORY) 220 S.F.
 STORAGE (ACCESSORY) 27 S.F.
 CIRCULATION 111 S.F.
TOTAL OCCUPANTS 21 OCCUPANTS

TOTAL EXITS REQUIRED: 1
 TOTAL EXITS PROVIDED: 1

'S'-1' OCCUPANCY
 WAREHOUSE 9,656 S.F. / 500 = 20 OCCUPANTS
 (E) ELECTRICAL (ACCESSORY) 116 S.F.
 (E) ROOF ACCESS (ACCESSORY) 87 S.F.
TOTAL OCCUPANTS 20 OCCUPANTS

TOTAL EXITS REQUIRED: 1
 TOTAL EXITS PROVIDED: 1

TOTAL SQUARE FOOTAGE 11,568 S.F.
 TOTAL OCCUPANTS 39 OCCUPANTS

PLUMBING FIXTURES REQUIRED (BASED ON CPC 2019 TABLE 422.1)

'B' OCCUPANCY
 OFFICES 1,200 S.F.
 BREAK ROOM 151 S.F.
 CIRCULATION 111 S.F.
 TOTAL 1,462 S.F.

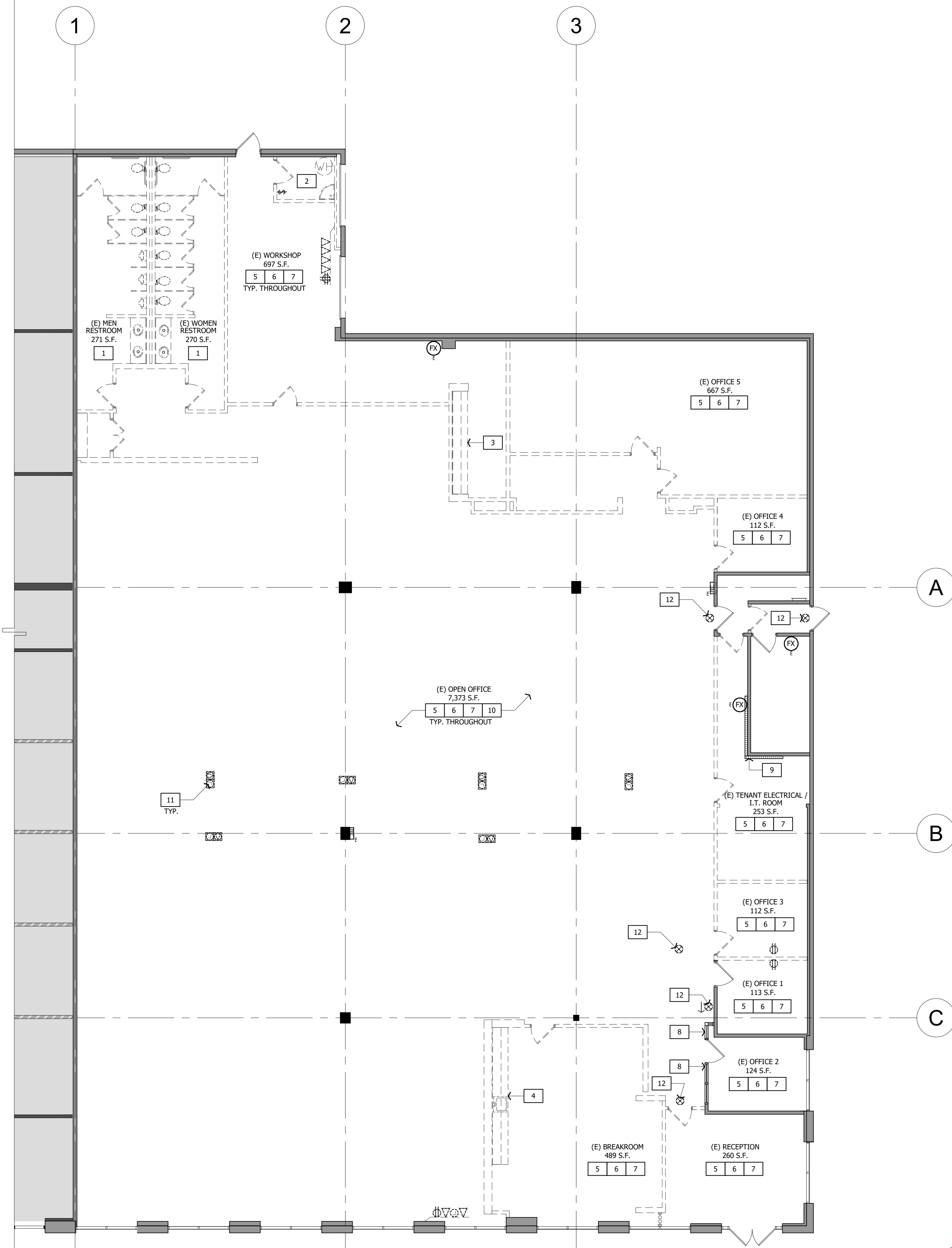
'S'-1' OCCUPANCY
 WAREHOUSE 9,656 S.F.

OFFICE 1,462 S.F. / 200 = 8
 WAREHOUSE 9,656 S.F. / 5,000 = 2
TOTAL OCCUPANTS PER TABLE 422.1 = 10
 (5 MEN AND 5 WOMEN)

	WC. MEN	WC. WOMEN	URINALS	LAVS. MEN	LAVS. WOMEN
TOTAL REQUIRED	1	1	1	1	1
TOTAL PROVIDED	3	3	0	3	3

SHEET NO.

EP-1



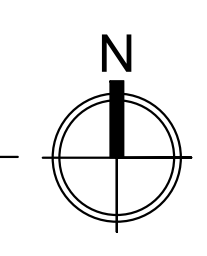
SYMBOLS LEGEND

- AREA NOT IN CONTRACT (N.I.C.)
- EXISTING PARTITION TO BE DEMOLISHED
- EXISTING FRAMED SIDELIGHT GLASS TO BE DEMOLISHED
- EXISTING TO REMAIN
- EXISTING DOOR ASSEMBLY TO BE DEMOLISHED
- EXISTING DOOR ASSEMBLY TO REMAIN
- FX EXISTING SURFACE MOUNTED FIRE EXTINGUISHER TO REMAIN
- RECE EXISTING RECESSED FIRE EXTINGUISHER TO REMAIN

KEYNOTES

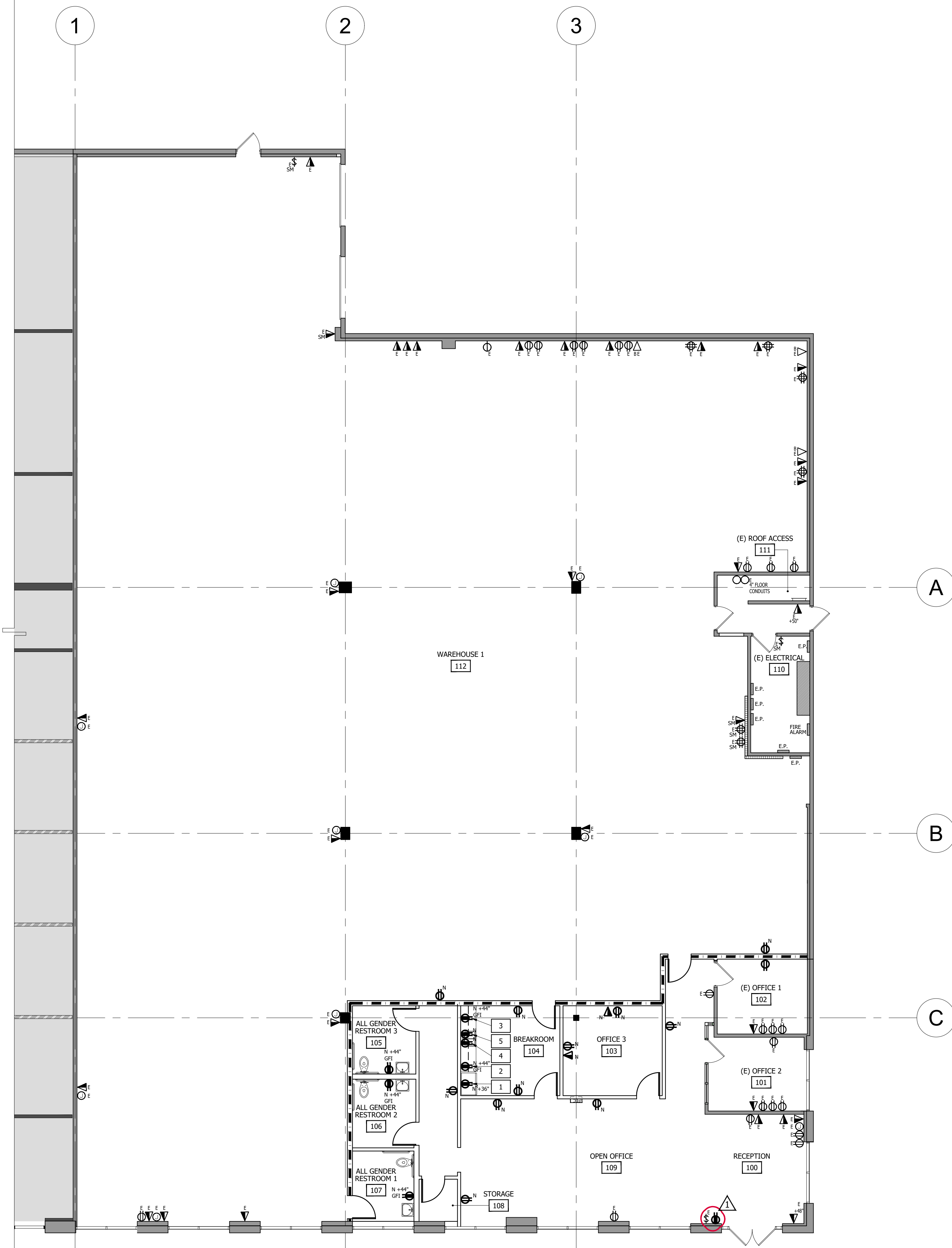
- 1 DEMOLISH EXISTING RESTROOMS, PLUMBING FIXTURES AND FINISHES. CAP OFF PLUMBING.
- 2 DEMOLISH EXISTING WATER HEATER AND FLOOR SINK. INFILL AND PATCH BACK SLAB, FINISH SMOOTH. PREP FOR FUTURE FLOOR COVERING.
- 3 DEMOLISH EXISTING MILLWORK.
- 4 DEMOLISH EXISTING MILLWORK; CAP OFF PLUMBING.
- 5 DEMOLISH EXISTING WALL FINISHES; TYPICAL THROUGHOUT U.O.N.
- 6 DEMOLISH ALL EXISTING FLOOR COVERING AND BASE, SCRAPE SLAB CLEAR, TYPICAL THROUGHOUT.
- 7 DEMOLISH ALL EXISTING CEILING GRID, TILE, LIGHTS AND EXIT SIGNS.
- 8 EXISTING GLAZING TO REMAIN. PROTECT IN PLACE.
- 9 EXISTING TELEPHONE BACKBOARD TO REMAIN. PROTECT IN PLACE.
- 10 EXISTING RIGID DUCTWORK TO BE DEMOLISHED.
- 11 DEMOLISH EXISTING FLOOR CORES. PULL ALL WIRING BACK TO THE PANEL.
- 12 REMOVE EXISTING CEILING MOUNTED EXIST SIGNS AND SAVE FOR POSSIBLE RELOCATION IN NEW LAYOUT.

DEMOLITION PLAN
SCALE: 1/8" = 1'-0"

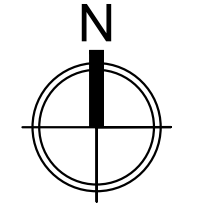


SHEET NO.

A-D.1



POWER / DATA PLAN
SCALE: 1/8" = 1'-0"



SYMBOL LEGEND

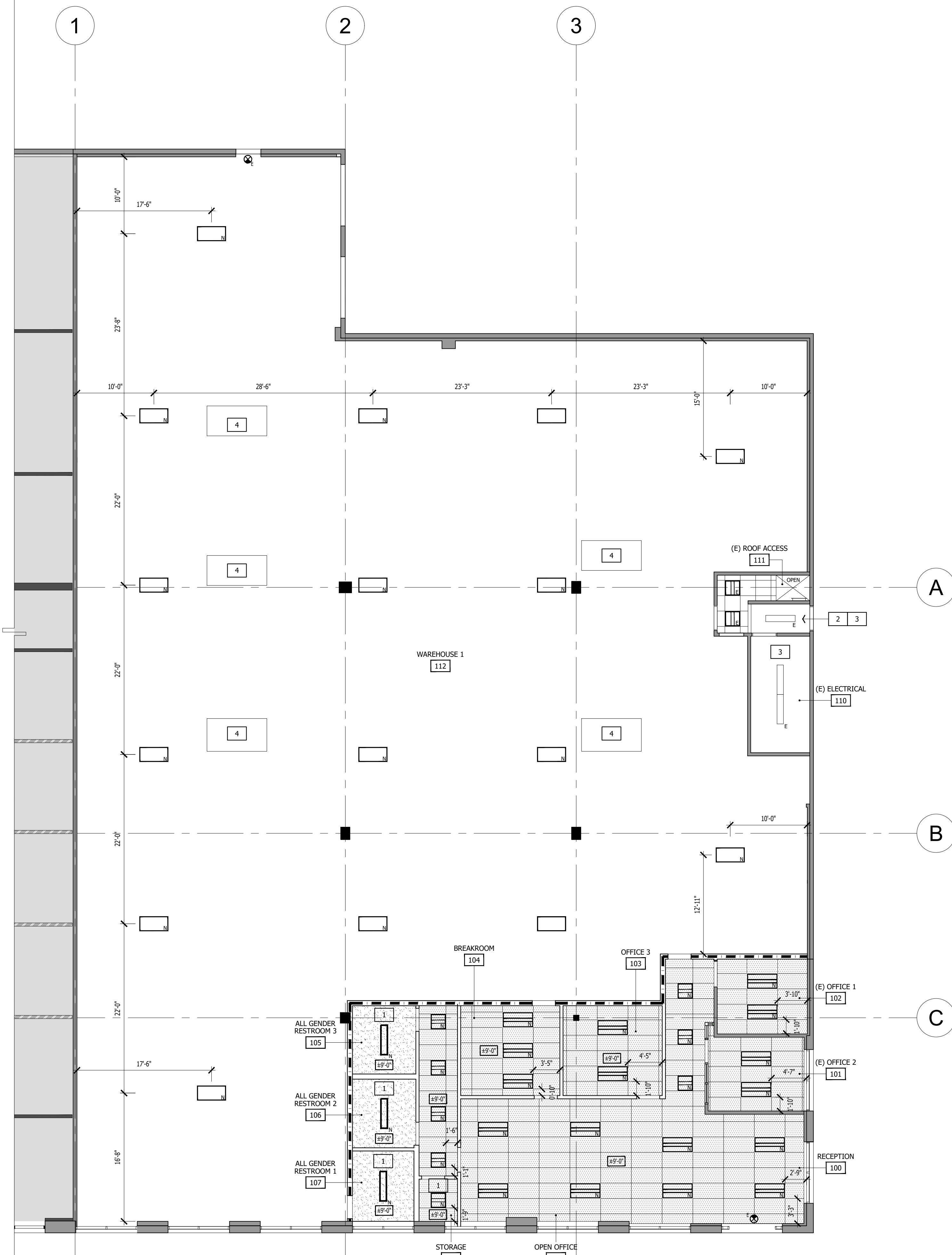
- NEW OUTLETS
- EXISTING OUTLETS
-
- DUPLEX ELECTRICAL WALL OUTLET: 110V, MOUNTED VERTICALLY AT 15" FROM BOTTOM OF PLATE U.O.N.
 FOURPLEX WALL OUTLET: 110V, MOUNTED VERTICALLY AT 15" FROM BOTTOM OF PLATE U.O.N.
 DEDICATED DUPLEX ELECTRICAL WALL OUTLET: 110V, 20AMP VERTICALLY MOUNTED AT 15" FROM BOTTOM OF PLATE U.O.N. SEE ELECTRICAL ENGINEERING DRAWINGS FOR SPECIFICATIONS. USE ORANGE RECEPTACLE AND BUILDING STANDARD COVER PLATE. MOUNT NEW RECEPTACLES WITH GROUND PLUG IN THE TOP POSITION.
 DEDICATED FOURPLEX ELECTRICAL WALL OUTLET: 110V, 20AMP VERTICALLY MOUNTED AT 15" FROM BOTTOM OF PLATE U.O.N. SEE ELECTRICAL ENGINEERING DRAWINGS FOR SPECIFICATIONS. USE ORANGE RECEPTACLE AND BUILDING STANDARD COVER PLATE. MOUNT NEW RECEPTACLES WITH GROUND PLUG IN THE TOP POSITION.
 DATA/TELEPHONE WALL OUTLET: SINGLE GANG OUTLET BOX MOUNTED IN WALL AT 15" FROM BOTTOM OF PLATE VERTICALLY U.O.N. WITH PULLSTRING.
- "N" SUBSCRIPT 'N' INDICATES NEW
 "E" SUBSCRIPT 'E' INDICATES EXISTING TO REMAIN

KEYNOTES

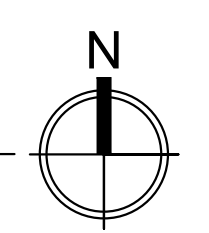
- 1 REFRIGERATOR PROVIDED BY TENANT; PROVIDE 20 A.S.C. MOUNT AT 36" A.F.F.
- 2 MICROWAVE PROVIDED BY TENANT; PROVIDE 20 A.S.C. MOUNT AT 44" A.F.F.
- 3 COFFEE MAKER PROVIDED BY TENANT. PROVIDE 20 A.S.C. MOUNT AT 44" AFF.
- 4 INSTANTANEOUS HOT WATER HEATER.
- 5 GARBAGE DISPOSAL WITH SWITCH.

SHEET NO.

A-2



REFLECTED CEILING PLAN
 SCALE: 1/8" = 1'-0"



SYMBOL LEGEND

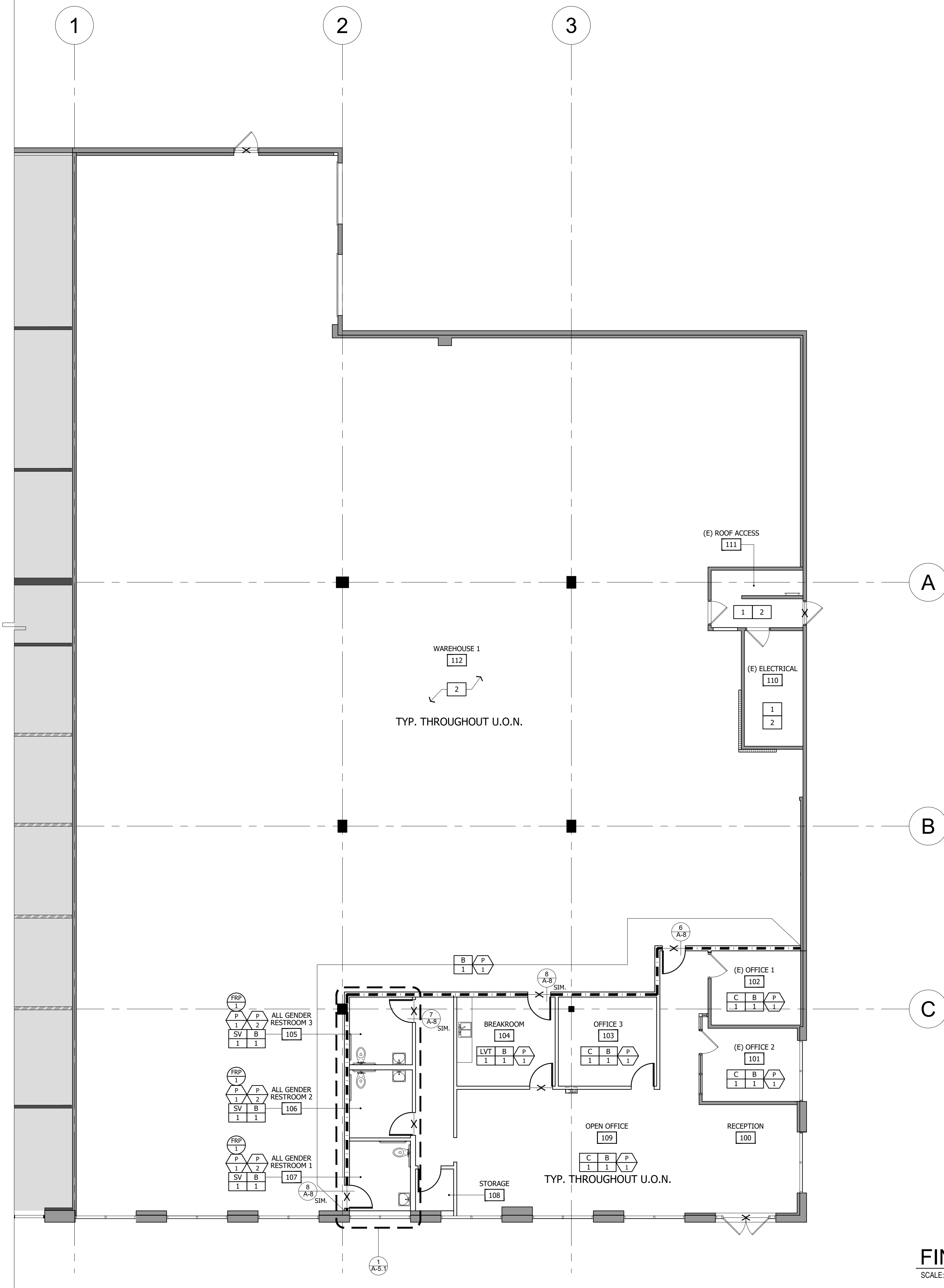
- ROOM NAME ←
- ROOM NUMBER ←
- EXISTING BUILDING STANDARD ACOUSTICAL CEILING TO REMAIN
- NEW BUILDING STANDARD ACOUSTICAL CEILING: NEW 2' x 4' x 5/8" BUILDING STANDARD LAY-IN, NON-COMBUSTIBLE CEILING TILE IN BUILDING STANDARD 15/16" GRID WITH ARMSTRONG SECOND LOOK TILE.
- NEW GYP. BD. HARD LID. SEE DETAIL 2/A-6.
- EXISTING SURFACE MOUNT 1 X 4 LIGHT FIXTURE
- NEW 2 x 4 LED LIGHT FIXTURE; PORTOR LIGHTING, PT-TFA-24-3CCT, 4000K OR EQUAL
- NEW 2 x 2 LED LIGHT FIXTURE; PORTOR LIGHTING, PT-TFA-22-3CCT, 4000K OR EQUAL
- NEW 1 X 4 LED SURFACE MOUNT LIGHT FIXTURE; PORTOR LIGHTING, PT-WA1-4F71, 4000K OR EQUAL
- NEW LED WAREHOUSE LIGHTING; PORTOR LIGHTING, PT-HBL4, 4' LENGTH, 4000K OR EQUAL
- EXIT SIGN: ILLUMINATED WITH BATTERY BACKUP - 90 MIN. MINIMUM. TO MATCH BUILDING STANDARD
- DIRECTIONAL EXIT SIGN: SAME AS ABOVE EXCEPT DIRECTIONAL.
- "N" SUBSCRIPT 'N' INDICATES NEW
- "E" SUBSCRIPT 'E' INDICATES EXISTING

KEYNOTES

- 1 CENTER LIGHT FIXTURE IN ROOM.
- 2 PATCH AND REPAIR EXISTING GYPSUM BOARD CEILING.
- 3 EXISTING GYPSUM BOARD CEILING AND LIGHTING TO REMAIN.
- 4 EXISTING SKYLIGHT TO REMAIN.

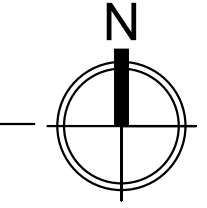
SHEET NO.

A-3



FINISH PLAN

SCALE: 1/8" = 1'-0"



SYMBOL LEGEND

- ROOM NAME ←
- # ← ROOM NUMBER
- X— INDICATES LINE OF FLOOR TRANSITION.
- GRAIN DIRECTION

FINISH LEGEND

- FLOOR COVERING SPECIFICATIONS:**
- C** CARPET TILE: MANUFACTURER - PATCRAFT
 STYLE: SURFACE STRIATION 10552
 COLOR: T.B.D.
 SIZE: 24"x24"
 NOTE: INSTALL PER MANUFACTURER'S SPECIFICATIONS
 INSTALLATION: ASHLAR
 LOCATION: THROUGHOUT U.O.N.
 - LVT** LUXURY VINYL TILE PLANK: MANUFACTURER - TBD
 STYLE: TBD
 COLOR: TBD
 SIZE: TBD
 NOTE: INSTALL PER MANUFACTURER'S SPECIFICATIONS, GLUE DOWN
 INSTALLATION: TBD
 LOCATION: BREAKROOM
 - SV** SHEET VINYL: MANUFACTURER - TBD
 COLOR: TBD
 SIZE: ROLL GOODS
 NOTE: INSTALL PER MANUFACTURER'S SPECIFICATIONS
 LOCATION: RESTROOMS
- BASE SPECIFICATIONS:**
- B** VINYL BASE: MANUFACTURER - TBD
 COLOR: TBD
 NOTE: 4" VINYL BASE; COVE ROLL; CONTINUOUS ROLL GOODS
 LOCATION: THROUGHOUT
- PAINT & WALLCOVERING SPECIFICATIONS:**
- P** PAINT: MANUFACTURER - DUNN EDWARDS
 COLOR: DEW 383 COOL DECEMBER
 FINISH: FLAT AT WALLS. EGGSHELL AT RESTROOMS WALLS.
 NOTE: 3 COATS
 LOCATION: THROUGHOUT, U.O.N.
 - P** CEILING PAINT: MANUFACTURER - DUNN EDWARDS
 COLOR: DEW 383 COOL DECEMBER
 FINISH: FLAT AT DRYWALL CEILING
 NOTE: 3 COATS
 LOCATION: RESTROOMS
- MILLWORK & MISCELLANEOUS SPECIFICATIONS:**
- PL** PLASTIC LAMINATE: MANUFACTURER - TBD
 COLOR: TBD
 INSTALLATION: TBD
 LOCATION: UPPER AND LOWER CABINETS
 - PL** PLASTIC LAMINATE: MANUFACTURER - TBD
 COLOR: TBD
 LOCATION: COUNTERTOPS
 - FRP** FRP WAINSCOT: MANUFACTURER - MARLITE OR EQUAL.
 COLOR: P199 BRIGHT WHITE
 LOCATION: RESTROOMS; WET WALLS ONLY
 NOTE: PROVIDE FRP TO 48" A.F.F. PAINT P-1 ABOVE.

KEYNOTES

- 1** PATCH AND REPAIR EXISTING WALL FINISH. PAINT TO MATCH EXISTING.
- 2** EXISTING FLOOR FINISH TO REMAIN. PATCH AND REPAIR CRACKS AND HOLES IN CONCRETE AS REQUIRED.

FINISHES FIRE NOTES:

ALL INTERIOR ROOMS AND ENCLOSED SPACES, WALLS & CEILING FINISHES SHALL HAVE A MIN. CLASS (C) : FLAME-SPREAD RATING INDEX OF 76-200, SMOKE-DEVELOPED INDEX 0-450 - PER 2019 CBC, CHAPTER 8, SECTION 803.1.2, & TABLE 803.13.

ALL BLDG. CORRIDORS AND ENCLOSURES FOR EXIT ACCESS STAIRWAYS, WALLS & CEILING FINISHES SHALL HAVE A MIN. CLASS (B) : FLAME-SPREAD RATING INDEX OF 26-75, SMOKE DEVELOPED INDEX 0-450, PER CBC 2019 CBC, SECTION SECTION 803.1.2, & TABLE 803.13.

INTERIOR FLOOR FINISH AND FLOOR COVERING MATERIALS SHALL COMPLY WITH SECTIONS CBC 2019, SECTION 804.2 THROUGH 804.4.2. FLOORING MATERIALS SHALL BE OF CLASS I OR II, AND CLASSIFIED IN ACCORDANCE WITH NFPA 253. MAXIMUM PERMITTED SMOKE DENSITY OF INTERIOR FINISHES SHALL COMPLY WITH 2019 CBC, SECTION 804.

INTERIOR FINISH MATERIALS APPLIED TO WALLS AND CEILINGS SHALL MEET THE FIRE PERFORMANCE AND SMOKE DEVELOPMENT LIMITATIONS PRESCRIBED IN CBC SECTION 803. (CBC 801.2)

INTERIOR FINISH MATERIALS APPLIED TO FLOOR SHALL MEET THE FIRE PERFORMANCE LIMITATIONS PRESCRIBED IN CBC SECTION 804. (CBC 801.3)

WALLS AND PARTITION WITHIN 2 FEET OF THE SERVICE SINKS, URINALS, AND WATER CLOSETS SHALL HAVE A SMOOTH, HARD, NON ABSORBENT SURFACE TO A HEIGHT OF NOT LESS THAN 4 FEET ABOVE THE FLOOR, AND THE MATERIALS IN SUCH WALLS SHALL NOT BE ADVERSELY AFFECTED BY MOISTURE. (CBC 1209.2.2)

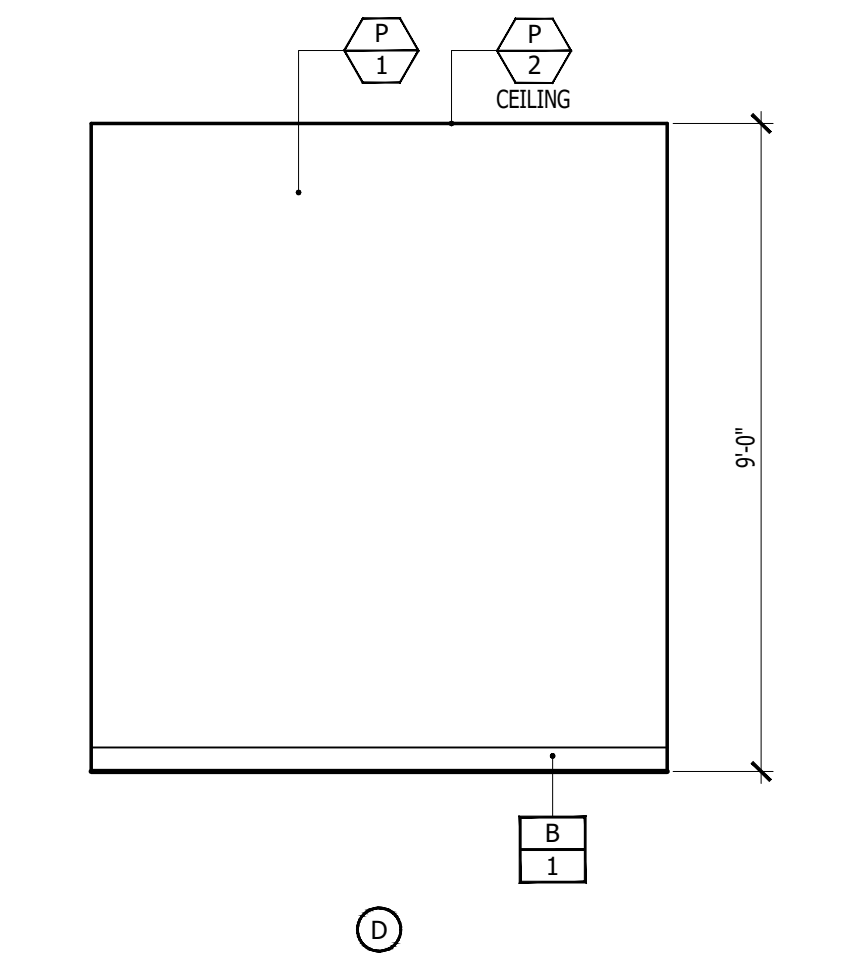
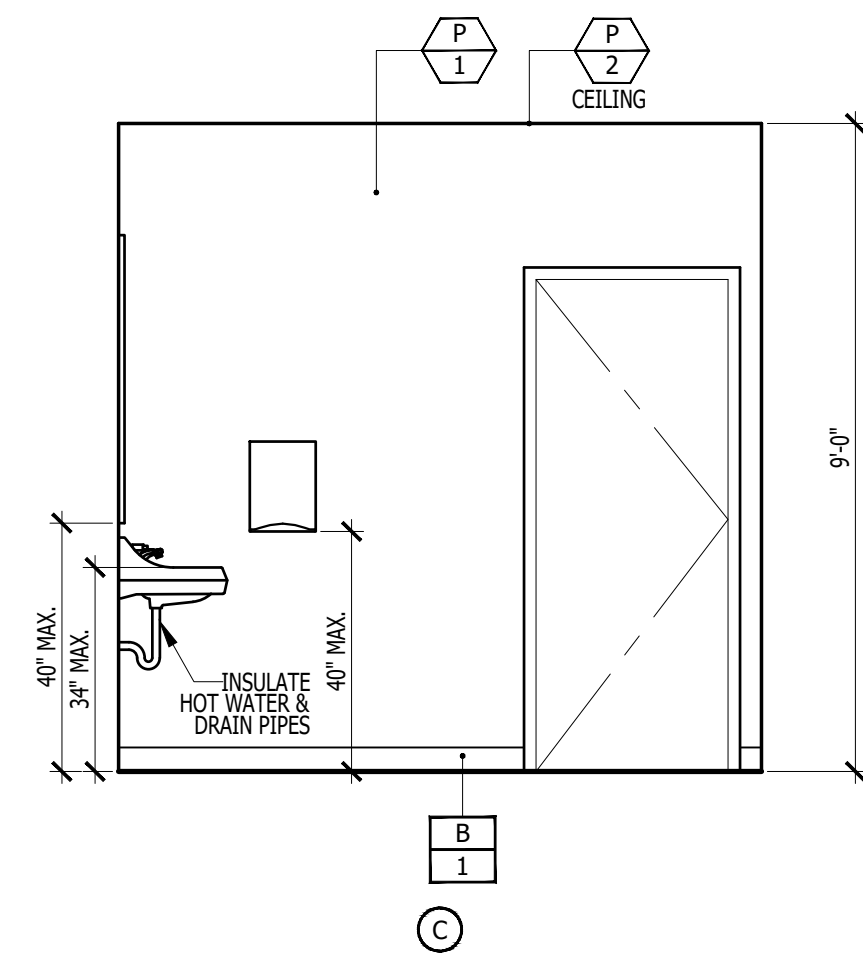
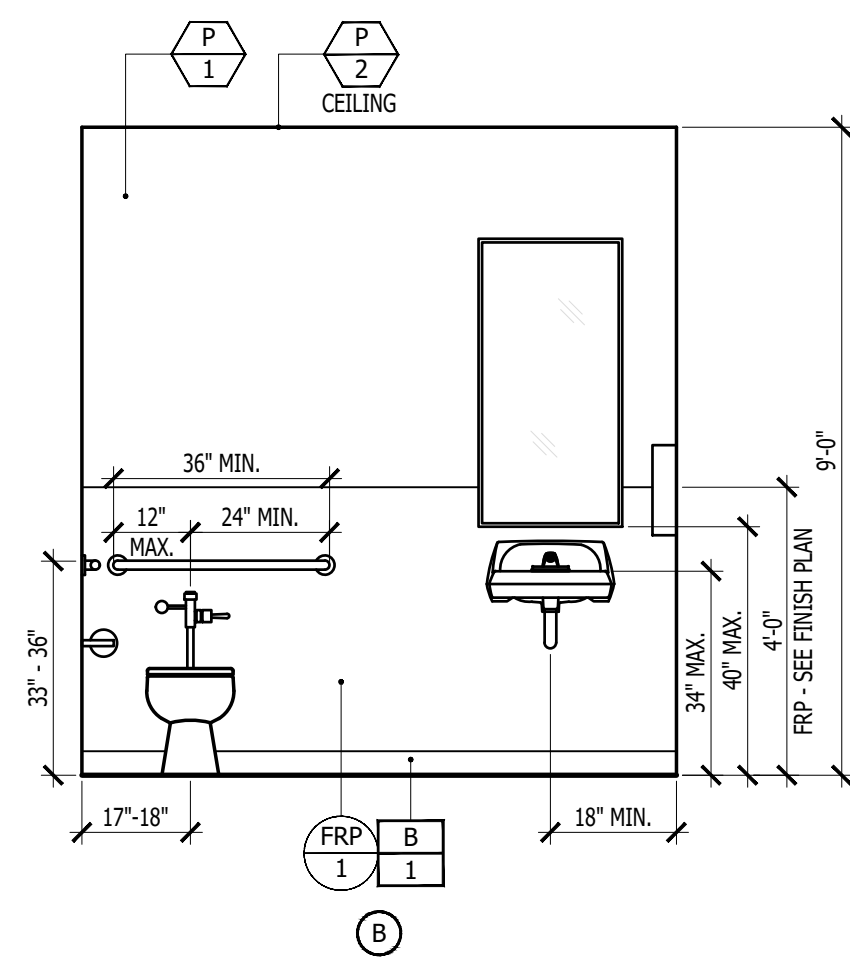
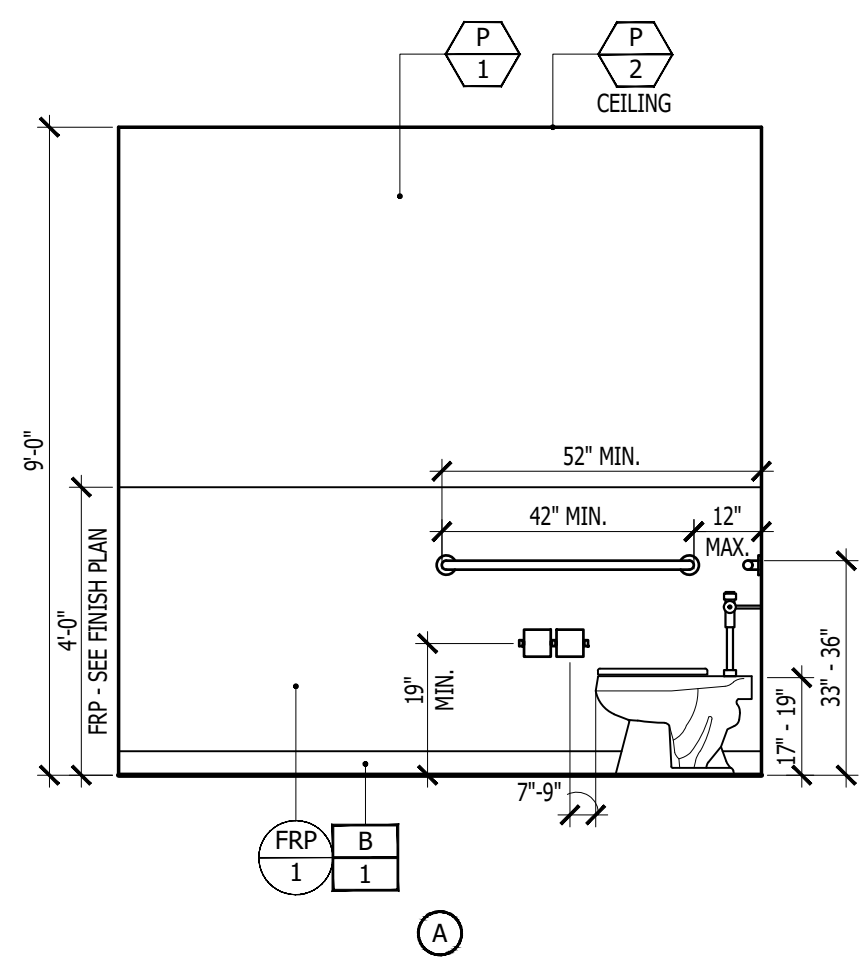
TOILET, BATHING, AND SHOWER ROOM FLOOR FINISH MATERIALS SHALL HAVE A SMOOTH, HARD, NONABSORBENT SURFACE THAT EXTENDS UPWARDS ONTO THE WALLS NOT LESS THAN 4 INCHES. (CBC 1209.2.1)

GENERAL NOTES

1. REFERENCE LINK MANUFACTURER CONTACT SHEET FOR PREFERRED PRICING.

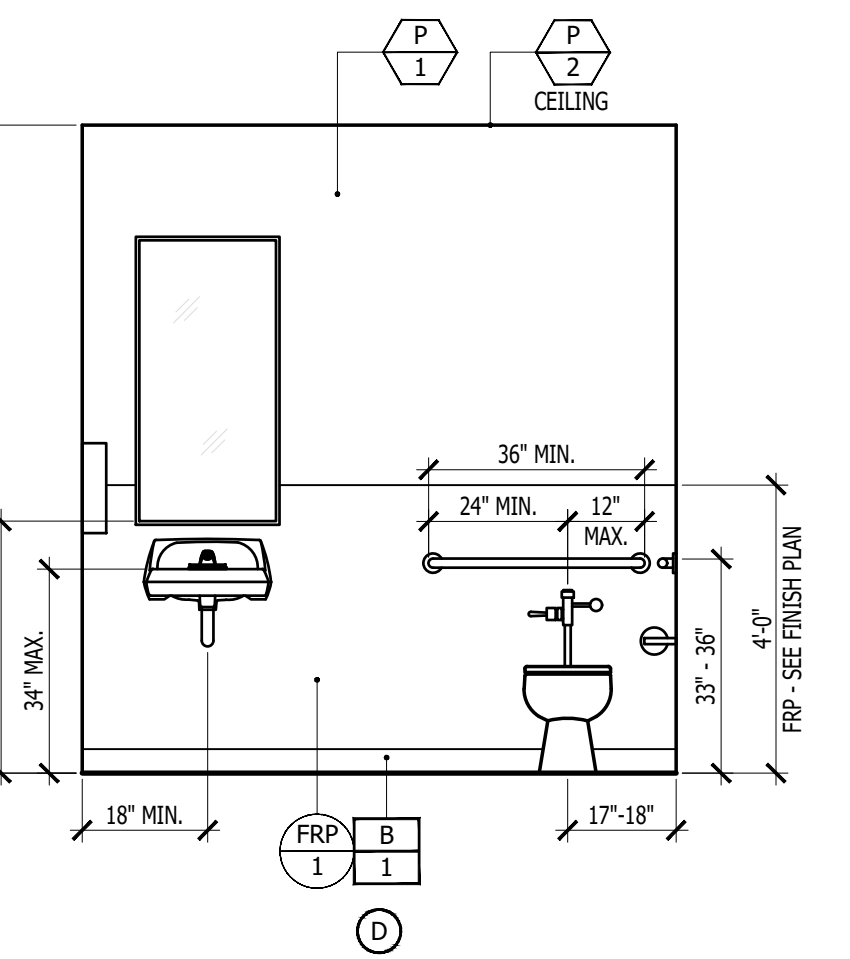
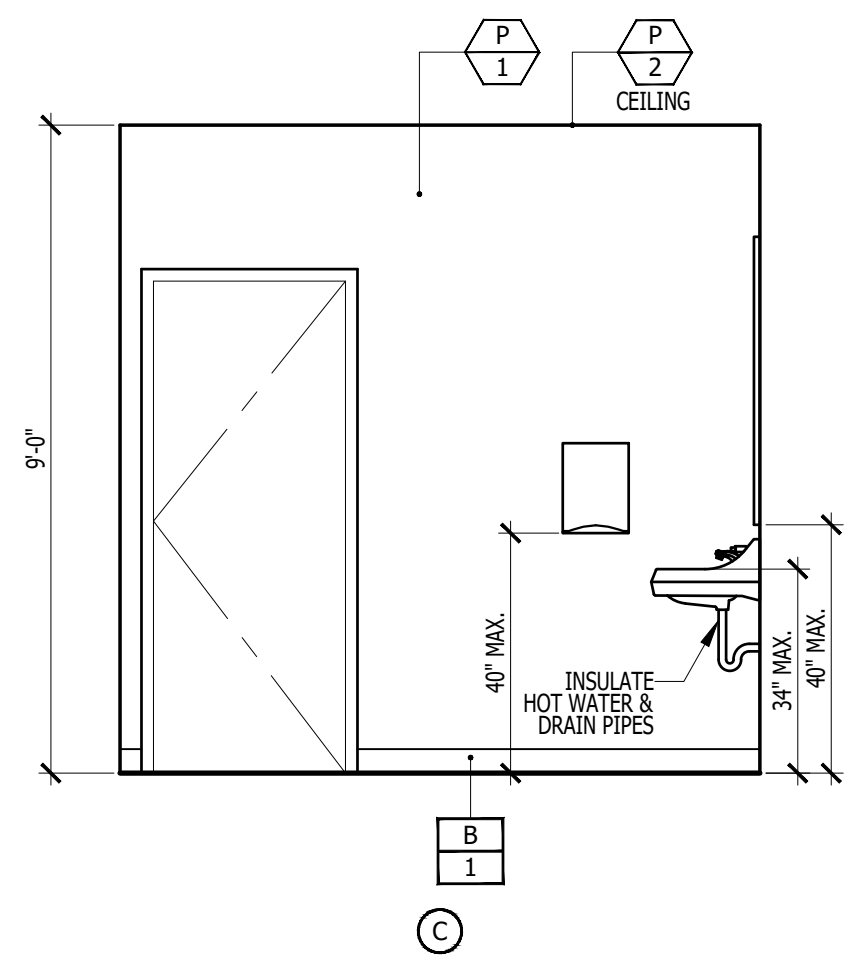
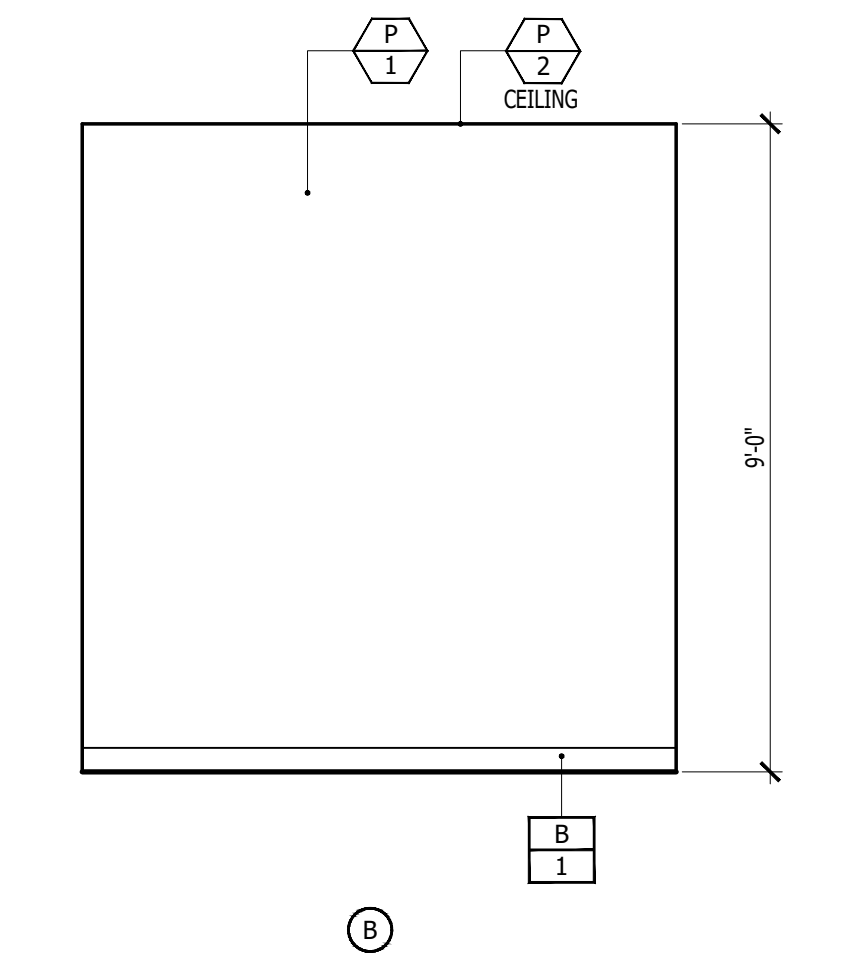
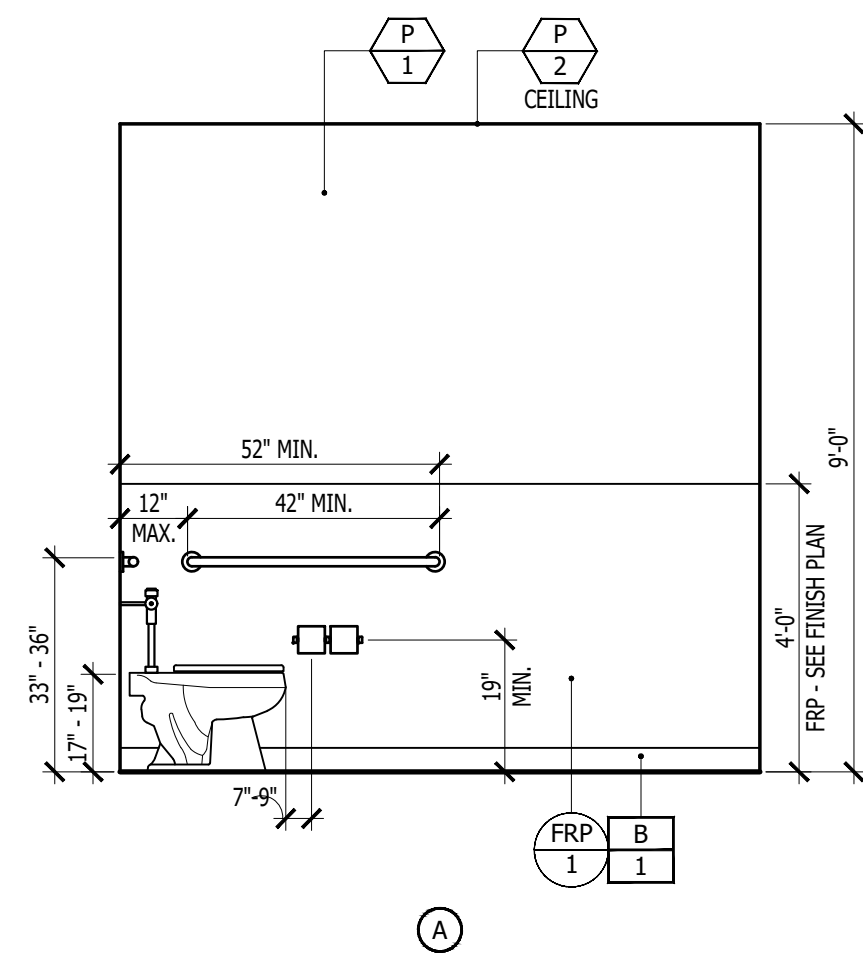
SHEET NO.

A-4



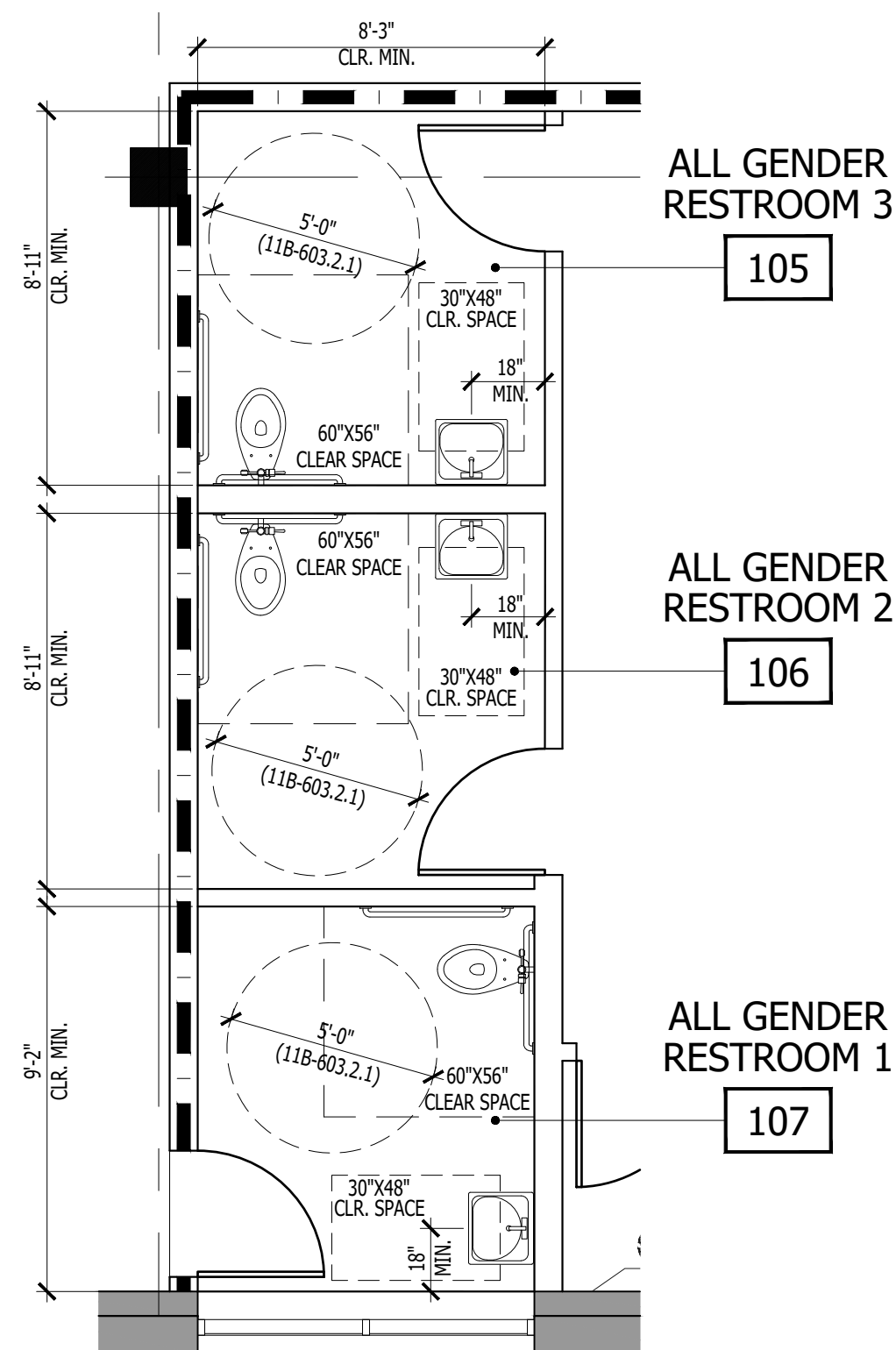
ALL GENDER RESTROOM 2 ELEVATION
SCALE: 3/8" = 1'-0"

3



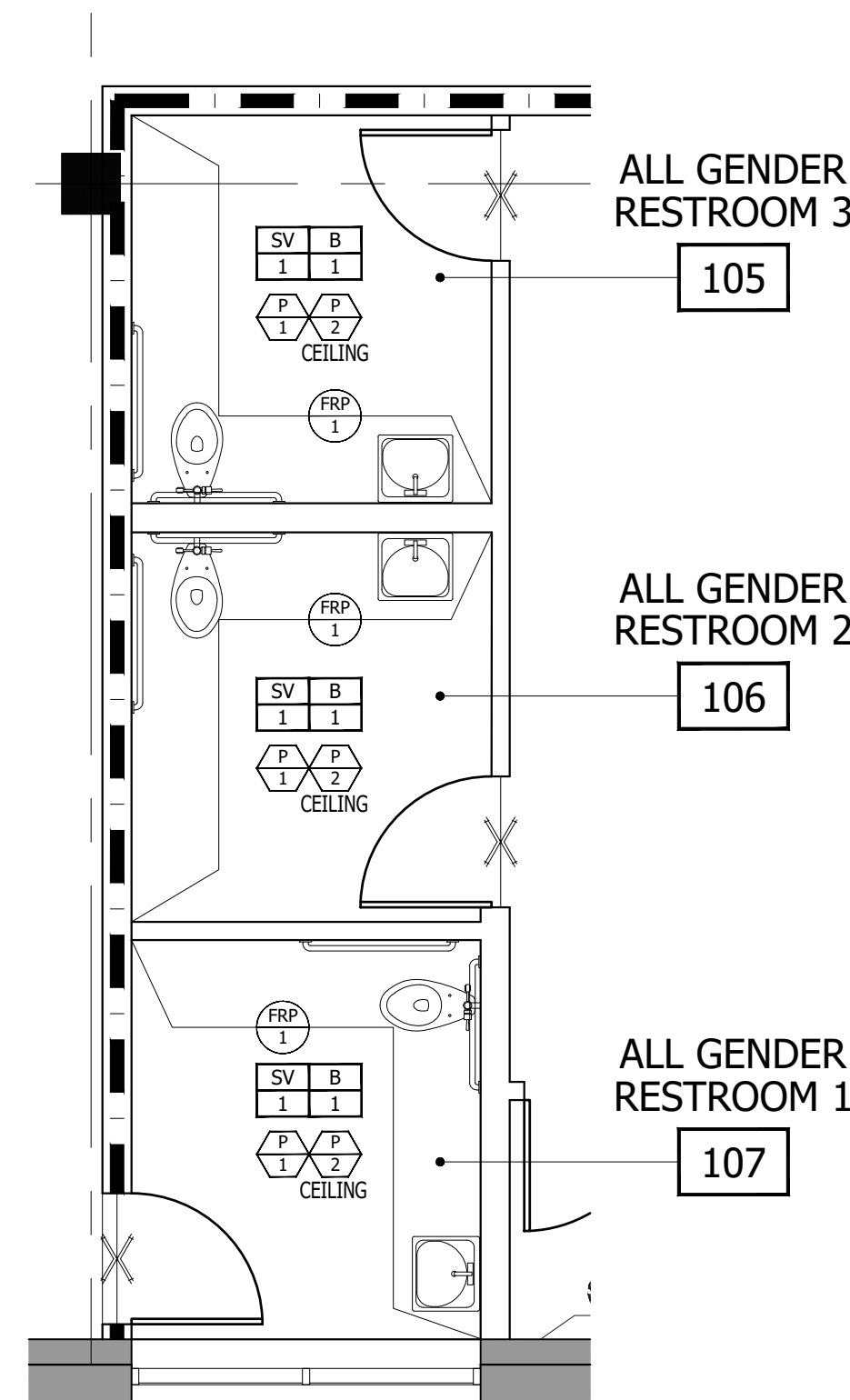
ALL GENDER RESTROOM 3 ELEVATION
SCALE: 3/8" = 1'-0"

2

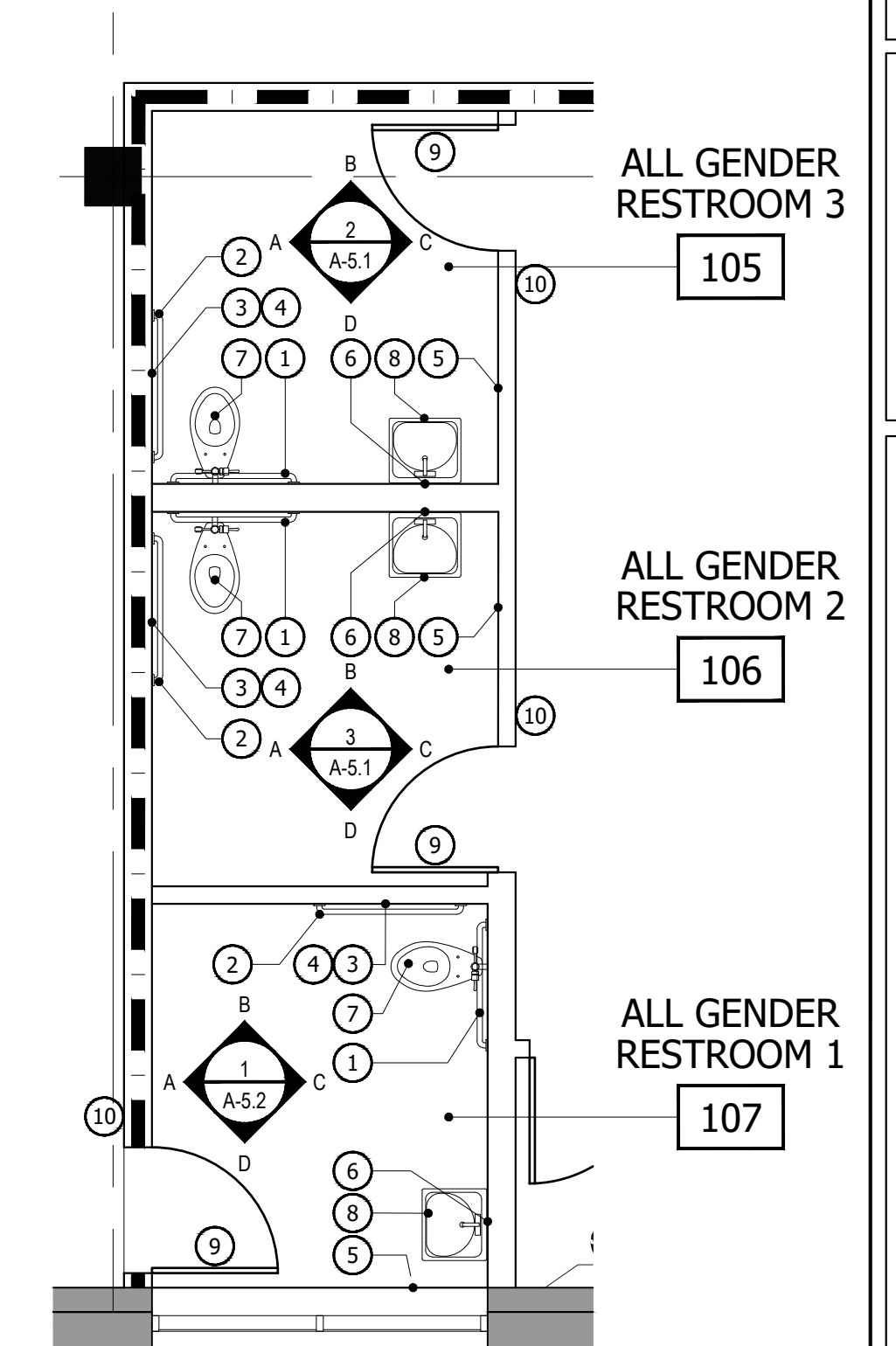


CLEARANCES

NOTE: REFER TO SHEET A-0.3 FOR ACCESSIBLE STANDARD DETAILS



FINISH PLAN



FIXTURES PLAN

ACCESSORIES TYPICAL BOTH MEN'S / WOMEN'S, U.O.N.

SYMBOL LEGEND - FLOOR AND WALL FINISH PLAN

—X— INDICATES LINE OF FLOOR TRANSITION.

FLOOR COVERING SPECIFICATIONS:

SV 1 SHEET VINYL: MANUFACTURER - TBD
COLOR: TBD
SIZE: ROLL GOODS
NOTE: INSTALL PER MANUFACTURER'S SPECIFICATIONS
LOCATION: RESTROOMS

BASE SPECIFICATIONS:

B 1 VINYL BASE: MANUFACTURER - TBD
COLOR: TBD
NOTE: 4" VINYL BASE; COVE ROLL; CONTINUOUS ROLL GOODS THROUGHOUT

PAINT & WALLCOVERING SPECIFICATIONS

P 1 GENERAL PAINT: MANUFACTURER - DUNN EDWARDS
COLOR: DEW 383 COOL DECEMBER
FINISH: FLAT AT WALLS, EGGSHELL AT RESTROOMS WALLS.
NOTE: 3 COATS
LOCATION: THROUGHOUT, U.O.N.

P 2 CEILING PAINT: MANUFACTURER - DUNN EDWARDS
COLOR: DEW 383 COOL DECEMBER
FINISH: FLAT AT DRYWALL CEILING
NOTE: 3 COATS
LOCATION: THROUGHOUT, U.O.N.

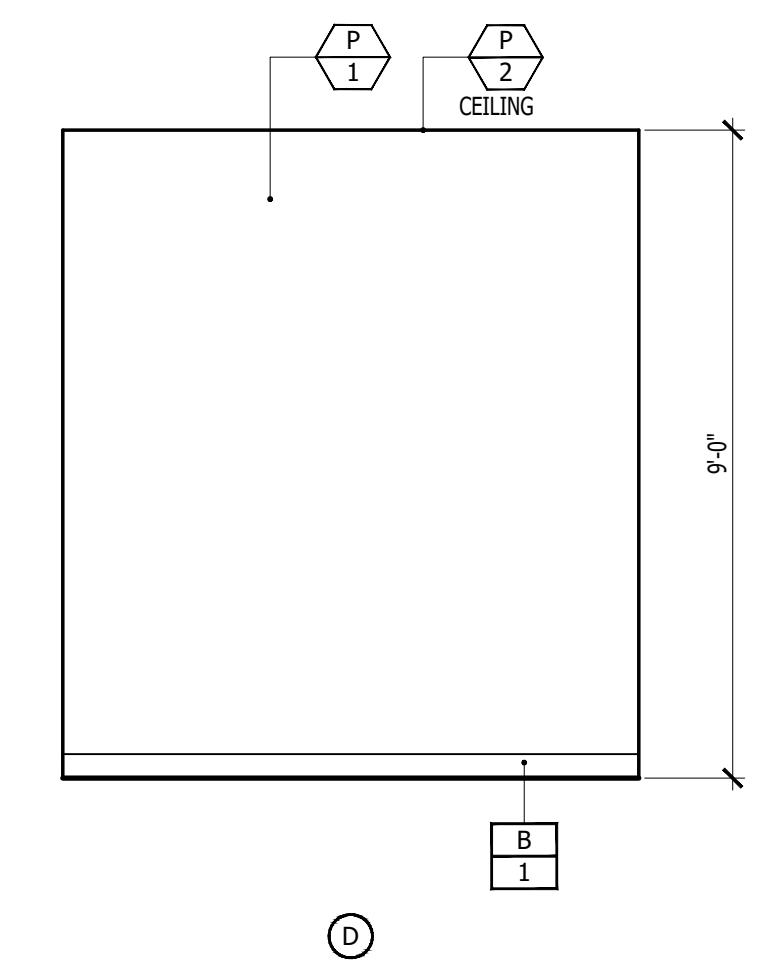
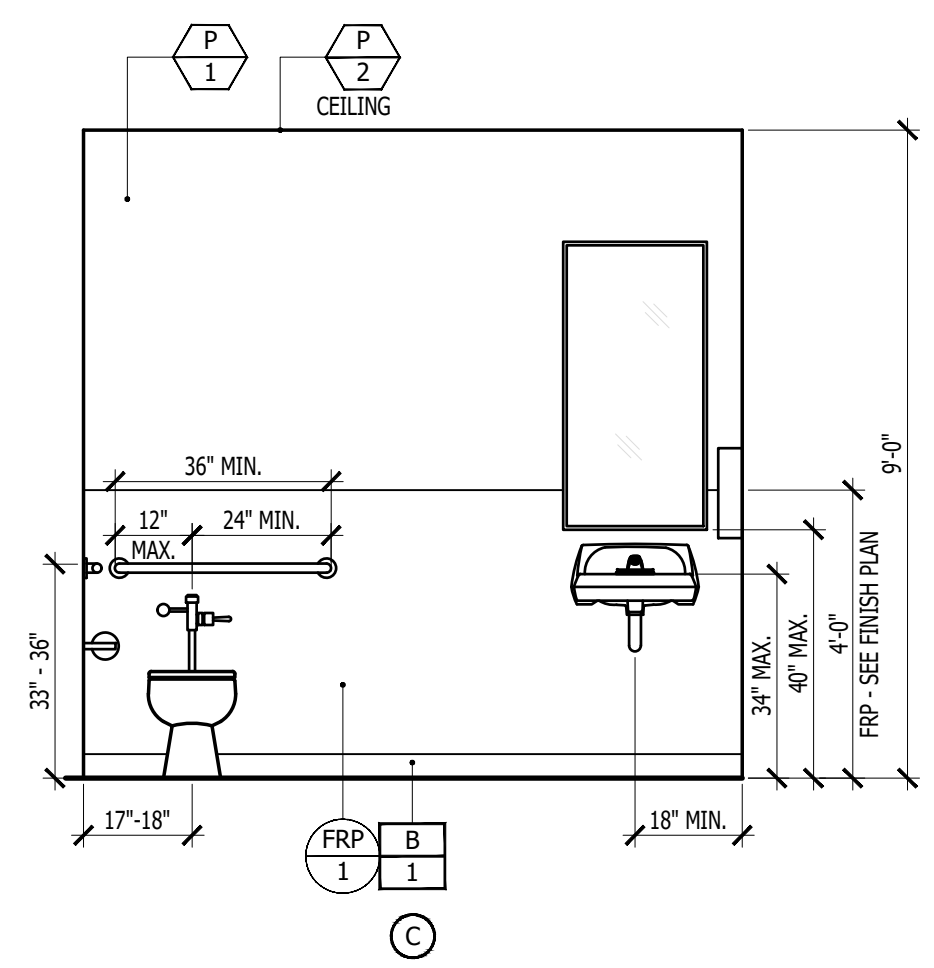
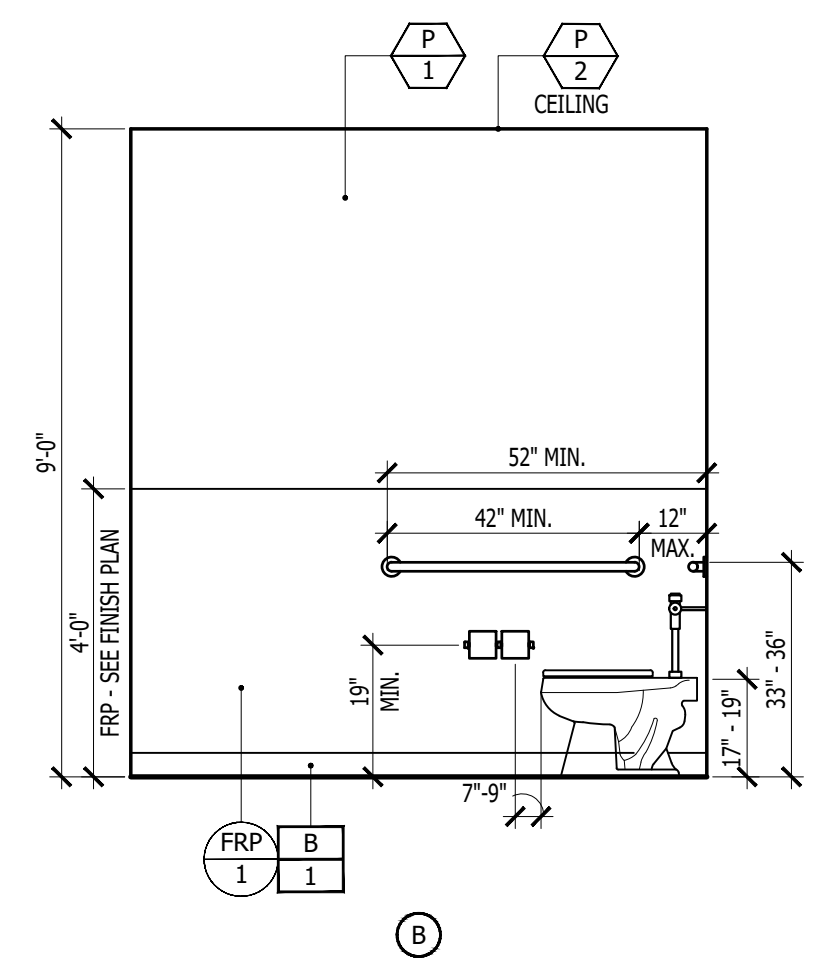
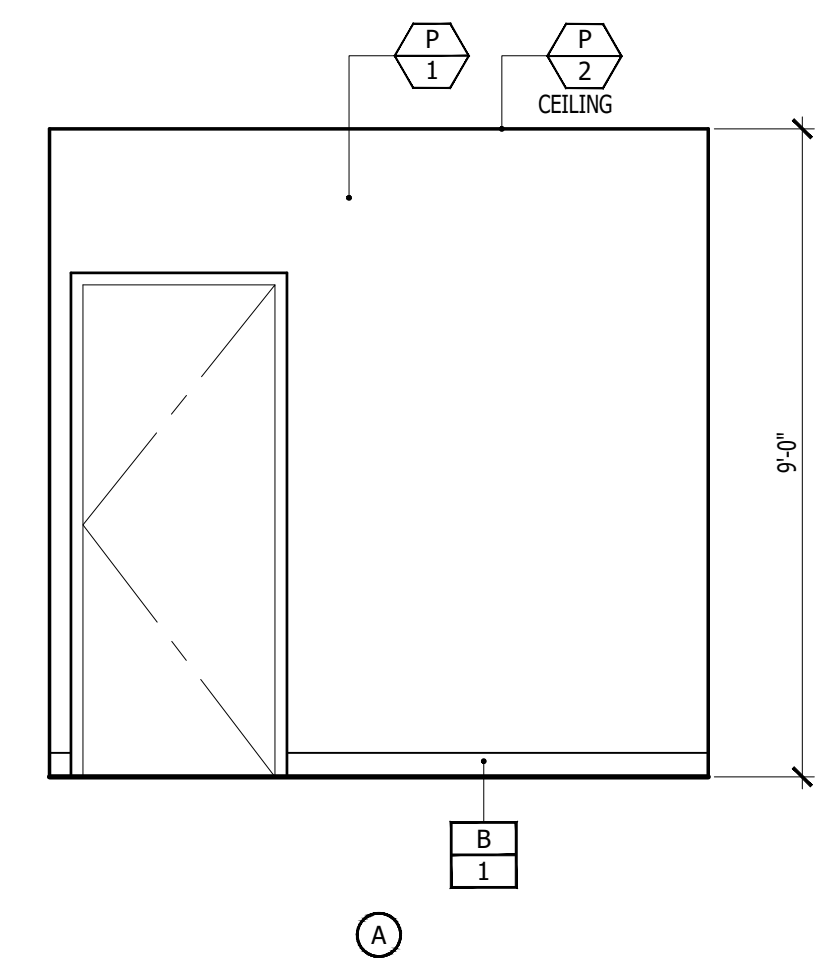
FRP 1 FRP WAINSCOT: MANUFACTURER - MARLITE OR EQUAL.
COLOR: P199 BRIGHT WHITE
LOCATION: RESTROOMS; WET WALLS ONLY
NOTE: PROVIDE FRP TO 48" A.F.F. PAINT P-1 ABOVE.

FIXTURE KEY NOTES

- 1 REAR GRAB BARS - BRADLEY #8120-000136 OR EQUAL STAINLESS STEEL FINISH
- 2 SIDE GRAB BARS - BRADLEY #8120-000142 OR EQUAL STAINLESS STEEL FINISH
- 3 DOUBLE TOILET PAPER HOLDER (EACH STALL) STAINLESS STEEL MOUNTED 33"-36" AFF BRADLEY #5224 (SURFACE MOUNTED) OR EQUAL
- 4 SANITARY NAPKIN DISPOSAL (EACH FEMALE STALL) BRADLEY #4A10-11 (SURFACE MOUNTED) OR EQUAL
- 5 PAPER TOWEL DISPENSER BRADLEY #250-15 (SINGLE ACCOMMODATION) OR EQUAL
- 6 FULL LENGTH 4" HIGH X 2' WIDE MIRROR, 1/4" PLATE GLASS AT BATHROOM VANITIES; ONE FRAMED BOBRICK OR APPROVED EQUAL STAINLESS STEEL FINISH.
- 7 ACCESSIBLE FLOOR MOUNTED TOILET - KOHLER HIGHCREST MODEL #K-4301 ELONGATED, 1.6 GPF, OR EQUAL IN WHITE, WITH KOHLER LUSTRA MODEL #K-4670-C SEAT AND SLOAN #WES-11 DUAL FLUSH FLUSHMETER. MOUNT PER ADA REQUIREMENTS.
- 8 WALL MOUNTED LAVATORY - KOHLER PINOIR MODEL #K2035-1 WHITE, WALL MOUNTED LAVATORY OR EQUAL, WITH 4" ENTER WITH KOHLER CORALIS MODEL #K-15199-P SINGLE LEVER TYPE FAUCET, ASSEMBLY FOR 4" CENTERS
- 9 DOOR MOUNTED ACCESSIBLE SIGNAGE
- 10 WALL MOUNTED ACCESSIBLE TACTILE SIGNAGE

NEW ACCESSIBLE RESTROOMS - ENLARGED PLANS
SCALE: 1/4" = 1'-0"

1



ALL GENDER RESTROOM 1 ELEVATION
SCALE: 3/8" = 1'-0"

CEILING SYSTEM DESIGN TO FOLLOW AND COMPLY WITH CBC SECTION 808 AND SEISMIC DESIGN PER ASCE 7-10, 13.5.6.

- FIXTURES INSTALLED IN CEILING SYSTEMS SHALL BE MOUNTED IN SUCH A MANNER THAT WILL NOT COMPROMISE CEILING PERFORMANCE.
- FIXTURES SHALL BE SUPPORTED BY SUPPLEMENTAL HANGERS WHEN THE WEIGHT EXCEEDS THE DEFLECTION CAPABILITY. HANGERS WILL BE WITHIN 6" OF EACH CORNER OR THE FIXTURES SHALL BE SUPPORTED INDEPENDENTLY. DO NOT ECCENTRICALLY LOAD MAIN OR CROSS RUNNERS. SUPPORTING RUNNERS SHALL NEVER BE ALLOWED TO ROTATE MORE THAN 2° AFTER THE LOAD IS IMPOSED.
- CEILING SYSTEMS AND THEIR CONNECTIONS TO THE BUILDING STRUCTURE SHALL CONFORM WITH CH. 16 PART 111 OF THE CBC. CEILING SYSTEMS SHALL BE DESIGNED AND INSTALLED FOR A LATERAL FORCE OF 100% OF THE WEIGHT OF THE FIXTURE IN ADDITION TO THE VERTICAL LOAD.
- ELECTRICAL.
 - FIXTURES SHALL BE POSITIVELY ATTACHED TO THE CEILING SYSTEM. THE ATTACHMENT DEVICE SHALL HAVE A CAPACITY OF 100% OF THE LIGHT FIXTURE WEIGHT ACTING IN ANY DIRECTION.
 - FOR INTERMEDIATE SYSTEMS NO 12 GAUGE HANGERS SHALL BE ATTACHED TO GRID MEMBERS WITHIN 3" OF EACH CORNER OF THE FIXTURE. TANDEM FIXTURES MAY UTILIZE COMMON WIRES.
 - LIGHT FIXTURES WEIGHING LESS THAN 56 POUNDS SHALL HAVE IN ADDITION TO REQUIREMENTS (2) NO. 12 GAUGE HANGERS CONNECTED FROM THE FIXTURE TO THE STRUCTURE ABOVE. THESE WIRES MAY SLACK.
 - LIGHT FIXTURES WEIGHING 56 POUNDS OR MORE SHALL BE SUPPORTED DIRECTLY FROM THE STRUCTURE ABOVE BY APPROVED HANGERS.
 - PENDANT HUNG FIXTURES SHALL BE SUPPORTED DIRECTLY FROM THE STRUCTURE ABOVE WITH NO. 9 GAGE WIRE OR APPROVED ALTERNATE SUPPORT WITHOUT THE USE OF THE CEILING SYSTEM FOR DIRECT SUPPORT.
- MECHANICAL.
 - CEILING MOUNTED AIR TERMINALS OR SERVICES WEIGHING LESS THAN 20 POUNDS SHALL BE POSITIVELY ATTACHED TO THE CEILING SYSTEM MAIN RUNNERS OR TO CROSS RUNNERS OF THE SAME CARRYING CAPACITY AS THE MAIN RUNNERS.
 - TERMINALS OR SERVICES WEIGHING 20 POUNDS BUT NOT MORE THAN 56 POUNDS SHALL HAVE IN ADDITION TO THE ABOVE NOTED (2) NO. 12 GAGE HANGERS CONNECTED FROM THE TERMINAL OR SERVICE TO THE CEILING SYSTEM HANGERS OR TO THE STRUCTURE ABOVE. THESE WIRES MAY BE SLACK.
 - TERMINALS OR SERVICES WEIGHING MORE THAN 56 POUNDS SHALL BE SUPPORTED DIRECTLY FROM THE STRUCTURE ABOVE BY APPROVED HANGERS.
- LIGHTING AND MECHANICAL FIXTURES MUST BE SUPPORTED BY ADDITIONAL INDEPENDENT NO. 12 GAGE WIRES ATTACHED TO EACH CORNER OF THE FIXTURES.

PER ASCE STANDARD 13.5.6.2.2:

- A HEAVY DUTY T-BAR GRID SYSTEM SHALL BE USED.
- THE WIDTH OF THE PERIMETER SUPPORTING CLOSURE ANGLE SHALL NOT BE LESS THAN 2.0 INCHES. IN EACH ORTHOGONAL HORIZONTAL DIRECTION, ONE END OF THE CEILING GRID SHALL BE ATTACHED TO THE CLOSURE ANGLE. THE OTHER END IN EACH HORIZONTAL DIRECTION SHALL HAVE A 0.75 INCH CLEARANCE FROM THE WALL AND SHALL REST UPON AND BE FREE TO SLIDE ON A CLOSURE ANGLE.
- FOR CEILING AREAS EXCEEDING 1,000 SQ. FT., HORIZONTAL RESTRAINT OF THE CEILING TO THE STRUCTURAL SYSTEM SHALL BE PROVIDED. THE TRIBUTARY AREAS OF THE HORIZONTAL RESTRAINTS SHALL BE APPROXIMATELY EQUAL.
- FOR CEILING AREAS EXCEEDING 2,500 SQ. FT. A SEISMIC SEPARATION JOINT OR FULL HEIGHT PARTITION THAT BREAKS UP THE CEILING UP INTO AREAS NOT EXCEEDING 2,500 SQ. FT. SHALL BE PROVIDED UNLESS STRUCTURAL ANALYSES ARE PERFORMED ON THE CEILING BRACING SYSTEM FOR THE PRESCRIBED SEISMIC FORCES THAT DEMONSTRATE CEILING SYSTEM PENETRATIONS AND CLOSURE ANGLES PROVIDE SUFFICIENT CLEARANCE TO ACCOMMODATE THE ANTICIPATED LATERAL DISPLACEMENT. EACH AREA SHALL BE PROVIDED WITH CLOSURE ANGLES IN ACCORDANCE WITH ITEM 2 AND RESTRAINTS OR BRACING IN ACCORDANCE WITH ITEM 3.
- EXCEPT WHERE RIGID BRACES ARE USED TO LIMIT LATERAL DEFLECTIONS, SPRINKLER HEADS AND OTHER PENETRATIONS SHALL HAVE A 2" OVERSIZE RING, SLEEVE OR ADAPTER THROUGH THE CEILING TILE TO ALLOW FOR FREE MOVEMENT OF AT LEAST 1 INCH IN HORIZONTAL DIRECTIONS. ALTERNATIVELY, A SWING JOINT THAT CAN ACCOMMODATE 1 INCH OF CEILING MOVEMENT IN ALL HORIZONTAL DIRECTIONS IS PERMITTED TO BE PROVIDED AT THE TOP OF THE SPRINKLER HEAD DIRECTION.
- CHANGES IN THE CEILING PLAN ELEVATION SHALL BE PROVIDED WITH POSITIVE BRACING.
- CABLE TRAYS WITH ELECTRICAL CONDUITS SHALL BE SUPPORTED INDEPENDENTLY OF THE CEILING.
- LATERAL BRACING FOR SUSPENDED CEILING SHALL BE PROVIDED. WHERE CEILING IS NOT SUPPORTING INTERIOR PARTITIONS, CEILING BRACING SHALL BE PROVIDED BY FOUR NO. 12 GAGE WIRES SECURED TO THE MAIN RUNNER WITHIN 2" OF THE CROSS RUNNER INTERSECTION AND SPLAYED 90° FROM EACH OTHER AT AN ANGLE NOT EXCEEDING 45° FROM THE PLANE OF THE CEILING. A STRUT (ADEQUATE TO RESIST THE VERTICAL COMPONENT FROM LATERAL LOADS) FASTENED TO THE MAIN RUNNER SHALL BE EXTENDED TO AND FASTENED TO THE STRUCTURAL MEMBERS OF THE ROOF OR FLOOR ABOVE. THESE HORIZONTAL RESTRAINT POINTS SHALL BE PLACED 12" O.C. IN BOTH DIRECTIONS WITH THE FIRST POINT WITHIN 6" OF EACH WALL. ATTACHMENT OF RESTRAINT WIRE TO THE STRUCTURE ABOVE SHALL BE ADEQUATE FOR THE LOAD IMPOSED.
- SUSPENDED CEILING SHALL BE DESIGNED AND INSTALLED IN ACCORDANCE WITH ASTM C635, ASTM C636 AND THE CSKA FOR SEISMIC ZONES 3-4 MODIFIED BY THE FOLLOWING - FOR CEILING AREAS EXCEEDING 100 SQ. FT., HORIZONTAL RESTRAINT OF THE CEILING TO THE STRUCTURAL SYSTEM SHALL BE PROVIDED. CABLE TRAYS AND CONDUITS SHALL BE SUPPORTED INDEPENDENTLY OF THE CEILING. SEE DETAILS THIS SHEET.

	LB./LINEAR FT.		
MAIN RUNNER MEMBERS	DIRECT HUNG	INDIRECT HUNG	FURRING BAR
HEAVY DUTY	16.0	8.0	-

ICC # ESR 1308

TYPICAL SUSPENDED CEILING SYSTEM
SCALE: NONE
UPDATED 06-17-21

SECTION	Fy (ksi)	SPACING (ft) O.C.	HT. FOR GYP BOARD WALL (5 PSF L/240)
2 1/2" X 25 GA	250S125-18MIL	12	14'-2"
		16	12'-10"
		24	11'-3"
2 1/2" X 20 GA	250S125-33MIL	12	15'-8"
		16	14'-3"
		24	12'-5"
3 5/8" X 25 GA	362S125-18MIL	12	16'-8"
		16	15'-2"
		24	13'-2"
3 5/8" X 20 GA	362S125-33MIL	12	15'-2"
		16	17'-5"
		24	15'-3"
4" X 25 GA	400S125-18MIL	12	17'-6"
		16	15'-11"
		24	13'-8"
4" X 20 GA	400S125-33MIL	12	20'-1"
		16	19'-0"
		24	15'-11"
6" X 25 GA	600S125-18MIL	12	22'-9"
		16	20'-1"
		24	16'-4"
6" X 20 GA	600S125-33MIL	12	28'-1"
		16	25'-6"
		24	22'-3"

MEMBER DEPTH: (EXAMPLE: 6" - 600 X 1/16 INCHES) ALL MEMBER DEPTHS ARE TAKEN IN 1/16 INCHES FOR ALL "T" SECTIONS MEMBER DEPTH IS THE INSIDE DIMENSION.

STYLE: (EXAMPLE: STD OR JOIST SECTION - S) THE FOUR ALPHA CHARACTERS UTILIZED BY THE DESIGNATOR SYSTEM ARE: S= STD OR JOIST, T= TRACK, U= CHANNEL, F= FURRING (INTERIOR NON-BEARING WALL PER SSMA ESR-3064P)

FLANGE WIDTH: (EXAMPLE: 1 5/8" - 1.625" - 162 X 1/16 INCHES) ALL FLANGE WIDTHS ARE TAKEN IN 1/16 INCHES.

MATERIAL THICKNESS: (EXAMPLE: 0.054 IN. = 54 MILS; 1 MIL = 1/1000 IN.) MATERIAL THICKNESS IS THE MINIMUM BASE METAL THICKNESS IN MILS. MINIMUM BASE METAL THICKNESS REPRESENTS 95% OF THE DESIGN THICKNESS.

NOTES: 1. EXTEND BACKING PLATE ACROSS (3) STUDS MIN.

METAL STUD TABLE
SCALE: NONE
(ICC ESR-3064P)

BACKING DETAIL
SCALE: NONE

CEILING JOIST SCHEDULE

SPAN*	CEILING JOISTS	
	GYP/SD BOARD CEILING	PLASTER CEILING
0'-0" TO 9'-0" MAX.	362S162-43 @ 16" O.C.	362S162-43 @ 16" O.C.
9'-0" TO 11'-0" MAX.	400S162-54 @ 16" O.C.	400S162-54 @ 16" O.C.
11'-0" TO 15'-0" MAX.	600S162-54 @ 16" O.C.	600S162-54 @ 16" O.C.
15'-0" TO 18'-0" MAX.	800S162-43 @ 16" O.C.	800S162-43 @ 16" O.C.

NOTE: *PROVIDE SOLID BLOCKING AT MID SPAN OF JOISTS WHEN SPAN EXCEEDS 8'-0"

CEILING JOIST TABLE
SCALE: 1-1/2" = 1'-0"

FIRE EXTINGUISHER CABINET
SCALE: 3" = 1'-0"

POTTER ROEMER, OR BLDG. STANDARD: 7062 STAINLESS STEEL WITH DOOR TYPE 'DV' DUO-VERTICAL PANEL, & TEMPERED SAFETY GLASS, & POTTER ROEMER 3005, 5 LBS ABC FIRE EXTINGUISHER REFER TO FLOOR OR CODE PLANS FOR LOCATIONS. ANCHOR CABINET TO DOUBLE STUDS AT JAMBS

NOTES: (2) LAYERS OF 5/8" TYPE "X" GYP. BD. BEHIND F.E.C. W/ FURRING CHANNELS TO MAINTAIN 1-HR FIRE RATING. VERIFY ROUGH OPENING W/ HGT. IN FIELD. MOUNT F.E.C. SO HIGH OPERABLE PART OF CABINET OR EXTINGUISHER DOES NOT EXCEED 48" A.F.F. VARIES PER MFG. METAL STUDS WHERE OCCURS.

FIRE EXTINGUISHER CABINET
SCALE: 3" = 1'-0"

PARTITION TO ROOF FRAMING
SCALE: 1-1/2" = 1'-0"

DIAGONAL BRACING
SCALE: 1/2" = 1'-0"

PARTITION TO ROOF FRAMING
SCALE: 1-1/2" = 1'-0"

PARTITION TO ROOF FRAMING
SCALE: 1-1/2" = 1'-0"

PARTITION TO ROOF FRAMING
SCALE: 1-1/2" = 1'-0"

INTERIOR PARTITION
SCALE: 1-1/2" = 1'-0"

FULL HEIGHT PARTITION
SCALE: 1-1/2" = 1'-0"

FULL HEIGHT PARTITION
SCALE: 1-1/2" = 1'-0"

SHEET NO. **A-6**

DOOR NOTES

1. THE CONTRACTOR SHALL VERIFY ALL DIMENSIONS AND CONDITIONS SHOWN ON THE WORKING DRAWINGS. THE CONTRACTOR SHALL NOTIFY THE DESIGNER OF ANY DISCREPANCIES PRIOR TO COMMENCEMENT OF ANY WORK. IN THE EVENT OF FAILURE TO DO SO, THE CONTRACTOR SHALL BE RESPONSIBLE FOR CORRECTION OF ANY ERROR.
2. PROVIDE HARDWARE AND ACCESSORIES AS REQUIRED FOR RATED AND MINERAL CORE DOORS.
3. ALL NEW DOORS SHALL RECEIVE LEVER HARDWARE (SEE HARDWARE SCHEDULE) UNLESS NOTED OTHERWISE. HARDWARE SHALL BE IN COMPLIANCE WITH CALIFORNIA STATE HANDICAPPED REGULATIONS TITLE 24.
4. MAXIMUM ALLOWABLE DOOR CLOSER PRESSURE.
 - A. INTERIOR DOORS 5 POUNDS
 - B. EXTERIOR DOORS 5 POUNDS
 - C. FIRE DOORS 15 POUNDS
5. ALL LABELED DOORS SHALL BE TIGHT-FITTED WITH A GASKET SO INSTALLED AS TO PROVIDE A SEAL WHERE THE DOOR MEETS THE STOP ON BOTH SIDES AND ACROSS THE TOP.
6. GENERAL CONTRACTOR SHALL PROVIDE MANUFACTURERS' CERTIFICATION THAT GLAZING ON DOORS AND WITHIN 4'-0" OF DOORS SHALL COMPLY WITH APPLICABLE CONSUMER PRODUCT SAFETY STANDARDS.
7. THE CONTRACTOR SHALL DEVELOP AND SUBMIT TO THE DESIGNER FOR APPROVAL FULL AND COMPLETE SCHEDULE OF FINISH HARDWARE. INDICATING THE QUANTITY, PART NUMBER, INSTALLATION, LOCATION AND FINISH OF EACH ITEM AS NEEDED FOR A COMPLETE AND PROPER INSTALLATION. BID PRICE SHALL BE BASED ON THE HARDWARE SCHEDULE.
8. HARDWARE SCHEDULE SHALL INCLUDE BUT NOT NECESSARILY BE LIMITED TO: BUTTS, LOCKSETS, LATCHETS, CLOSERS, WEATHERSTRIPPING, PANIC HARDWARE, FLOOR HINGES, PIVOTS, KICKPLATES, PULLS, STOPS, ANCHORS, WALL BUMPERS, THRESHOLDS, DOORS SHOES AND MUTES.
9. ALL DOORS TO HAVE INDIVIDUAL KEYS, STAMPED WITH ROOM NUMBER WITH ONE MASTER KEY. CONTRACTOR TO SUBMIT 4 SETS OF EACH PRIVATE OFFICE DOOR AND 6 SETS OF KEYS FROM EACH AUXILIARY ROOM.
10. PROVIDE TENANT AN INDIVIDUAL KEY FOR ROOMS WITH "T" STAMPED ON THE KEY.
11. VERIFY KEYING REQUIREMENTS AND QUANTITIES WITH OWNER. CONTRACTOR SHALL PROVIDE LOCK CYLINDERS, KEYING AND KEYS.
12. CONTRACTOR TO PREP AND REWORK AND DRILL EXISTING DOORS, AS WELL AS NEW DOORS TO RECEIVE SECURITY HARDWARE WHEN APPLICABLE.
13. THE MAXIMUM UNDERCUT OF ALL DOORS SHALL NOT EXCEED 1/2" (ONE-HALF INCH) ABOVE THE SURFACE OF THE FINISHED FLOOR OR THRESHOLD. ALL DOORS SHALL BE UNDERCUT ON THE JOB SITE AND SPECIFICALLY FOR INDIVIDUAL DOOR OPENINGS AND FLOOR FINISHES. THE CONTRACTOR SHALL VERIFY THE FINISHED HEIGHT OF ALL FLOOR FINISHES PRIOR TO UNDERCUTTING OF DOORS.
14. HARDWARE SPECIFIED FOR INSTALLATION ON DOORS AND FRAMES WHICH REQUIRE A FIRE-RATED LABEL SHALL COMPLY WITH ALL CODE REQUIREMENTS GOVERNING HARDWARE TYPE AND INSTALLATION METHODS FOR RATED ASSEMBLIES.
15. INSTALL DOOR CLOSERS AS SPECIFIED ON ALL FIRE RATED DOORS.
16. DOORS W/O SYMBOLS ARE EXISTING TO REMAIN. (CORE & SHELL).
17. ALL HARDWARE FINISHES SHALL BE BUILDING STANDARD.
18. ALL MORTISE STRIKES SHALL HAVE DUST COVERS.
19. ALL STUDS AT DOOR FRAMES SHALL BE ST10 TYPE.
20. ALL KEYWAYS SHALL BE APPROVED BUILDING STANDARD.
21. 20 MINUTE RATED DOORS SHALL BEAR MANUFACTURERS LABELS INDICATING THEIR RATING FOLLOWED BY THE LETTER "S".
22. FIRE DOORS GREATER THAN 20 MINUTE SHALL BEAR THE MANUFACTURERS LABEL INDICATING THE DOOR RATING.
23. FIRE RATED DOORS GREATER 20 MINUTE RATING SHALL RECEIVE HINGES WITH BALLBEARINGS OR ANTI-FRICTION TYP.
24. EACH PANEL OF SAFETY GLASS INSTALLED IN HAZARDOUS LOCATIONS SHALL BE IDENTIFIED BY A MANUFACTURERS DESIGNATION SPECIFYING WHO APPLIED THE DESIGNATION THE MANUFACTURER OR INSTALLER AND THE SAFETY GLAZING STANDARD. APPLIES TO ALL DOORS AND GLASS SIDELIGHTS.
25. EACH LIGHT GLAZING MATERIAL SHALL HAVE A PERMANENT LABEL AFFIXED INDICATING SAFETY GLAZING. LABELS SHALL BE VISIBLE WHEN GLAZED.
26. SPECIAL EGRESS CONTROL DEVICES NOTES:
 - a. THE EGRESS CONTROL DEVICE SHALL AUTOMATICALLY DEACTIVATE UPON ACTIVATION OF EITHER THE SPRINKLERS SYSTEM OR THE SMOKE DETECTION SYSTEM.
 - b. THE EGRESS DEVICE SHALL AUTOMATICALLY DEACTIVATE UPON THE LOSS OF ELECTRICAL POWER TO ANY IF THE FOLLOWING: THE EGRESS CONTROL DEVICE ITSELF, THE SMOKE DETECTION SYSTEM, THE MEANS OF EGRESS ILLUMINATION AS REQUIRED BY SECTION 1003.2.9.
27. ALL MEANS OF EGRESS DOORS SHALL COMPLY WITH THE REQUIREMENTS OF SECTION 1010.1
 - a. MEANS OF EGRESS DOORS SHALL BE READILY DISTINGUISHABLE FROM THE ADJACENT CONSTRUCTION AND FINISHES WITH NO MIRRORS, CURTAINS, DRAPES, DECORATIONS, OR SIMILAR MATERIALS.
 - b. REQUIRED EXIT DOORS SHALL HAVE NOT LESS THAN 32-INCH CLEAR WIDTH, 80-IN. CLEAR HEIGHT, AND SHALL BE CAPABLE OF OPENING 90 DEGREES. THE MAX. SWINGING DOOR LEAF WITH 15 48-IN. NOMINAL.
 - c. EGRESS DOORS SHALL BE OF THE PIVOTED OR SIDED-HINGED SWINGING TYPE
 - d. FORCE FOR PUSHING OR PULLING OPEN INTERIOR SWINGING EGRESS DOORS, OTHER THAN FIRE DOORS, SHALL NOT EXCEED 5 POUNDS. FOR OTHER SWINGING DOORS, AS WELL AS SLIDING AND FOLDING DOORS, THE DOOR LATCH SHALL RELEASE WHEN SUBJECTED TO A 15-POUND FORCE. THE DOOR SHALL BE SET IN MOTION WHEN SUBJECTED TO A 30-POUND FORCE. THE DOOR SHALL SWING TO A FULL OPEN POSITION WHEN SUBJECTED TO A 15-POUND FORCE. REVOLVING AND SLIDING DOORS MAY BE USED IN OTHER THAN GROUP H OCCUPANCIES AS EGRESS DOORS ONLY IF ALL REQUIREMENTS OF SECTION 1010.1.4.1 AND SECTION 1010.1.4.3, RESPECTFULLY, ARE MET.
28. THE ACTUATING PORTION OF THE RELEASING DEVICE SHALL EXTEND AT LEAST ONE-HALF OF THE DOOR LEAF WIDTH.

DOOR NOTES (CONTINUED)

29. THE MAXIMUM UNLATCHING FORCE DOES NOT EXCEED 15-POUNDS.
30. PIVOTED OR BALANCED DOORS SHALL BE OF THE PUSH-PAD TYPE WHERE PANIC HARDWARE IS REQUIRED, AND THE PAD SHALL NOT EXTEND ACROSS MORE THAN ONE-HALF OF THE DOOR WIDTH, MEASURED FROM THE LATCH SIDE.
31. PANIC HARDWARE IS LISTED IN ACCORDANCE WITH UL 305.
32. FIRE EXIT HARDWARE IS LISTED IN ACCORDANCE WITH UL 10C AND UL-305.
33. EXCEPT AS SPECIFICALLY PERMITTED BY CBC 1008.1.9, EGRESS DOORS SHALL BE READILY OPERABLE FROM THE EGRESS SIDE WITHOUT THE USE OF A KEY OR SPECIAL KNOWLEDGE. CBC 1010.1.9
34. THE POWER SUPPLY FOR MEANS OF EGRESS ILLUMINATION SHALL NORMALLY BE PROVIDED BY THE PREMISES' ELECTRICAL SUPPLY IN THE EVENT OF POWER SUPPLY FAILURE, AN EMERGENCY ELECTRICAL SYSTEM SHALL AUTOMATICALLY ILLUMINATE ALL OF THE FOLLOWING AREAS:
 - a. AISLES, CORRIDORS, AND EXIT ACCESS STAIRWAYS AND RAMP IN ROOMS AND SPACES REQUIRING TWO OR MORE MEANS OF EGRESS; B. INTERIOR EXIT ACCESS STAIRWAYS AND RAMP, INTERIOR AND EXTERIOR EXIT STAIRWAYS AND RAMP, EXIT PASSAGEWAYS, VESTIBULES AND AREAS ON THE LEVEL OF DISCHARGE USED FOR EXIT DISCHARGE, AND EXTERIOR LANDINGS FOR EXIT DOORWAYS THAT LEAD DIRECTLY TO THE EXIT DISCHARGE IN BUILDINGS THAT REQUIRE TWO OR MORE MEANS OF EGRESS; AND C. ELECTRICAL EQUIPMENT ROOMS, FIRE COMMAND CENTERS, FIRE PUMP ROOMS, GENERATOR ROOMS, AND PUBLIC RESTROOMS WITH AN AREA GREATER THAN 300 SQ. FT. (CBC 1008.3)

DISABLED ACCESS DOOR

1. RIGHT DOOR ACTIVE ON PAIRS OF DOORS UNLESS OTHERWISE NOTED.
2. ALL HARDWARE IS LEVER TYPE, AND CONFORMS TO 2019 CBC HANDICAPPED ACCESSIBILITY REQUIREMENTS. DOORS SHALL COMPLY WITH CBC SEC. 1010.1.9
3. MAXIMUM EFFORT TO OPERATE DOORS SHALL NOT EXCEED 5 POUNDS FOR EXTERIOR DOORS AND INTERIOR DOORS. SUCH PULL OR PUSH EFFORT BEING APPLIED AT RIGHT ANGLES TO HINGED DOORS AND AT THE CENTER OF THE PLANE OF SLIDING OR FOLDING DOORS. COMPENSATING DEVICES OF AUTOMATIC DOOR OPERATORS MAY BE UTILIZED TO MEET THE ABOVE STANDARDS. WHEN FIRE DOORS ARE REQUIRED, THE MAXIMUM EFFORT TO OPERATE THE DOOR MAY BE INCREASED TO THE MINIMUM ALLOWABLE BY THE APPROPRIATE ADMINISTRATIVE AUTHORITY, NOT TO EXCEED 15 POUNDS. (2019 CBC SEC. 11B-404.2.9)
4. 1/2" MAXIMUM TOTAL THRESHOLD HEIGHT WITH 1/4" MAX. VERTICAL CHANGE AT EDGE. CHANGE IN LEVEL BETWEEN 1/4" AND 1/2" SHALL BE LEVELED WITH SLOPE NO GREATER THAN 1:2 RATIO. (11B-404.2.5 2019 CBC)
5. THE FLOOR OR LANDING ON EACH SIDE OF AN EXIT DOOR SHALL BE LEVEL. EXCEPT FOR EXTERIOR LANDINGS, WHICH ARE NOT PERMITTED TO HAVE A SLOPE NOT TO EXCEED 2% OR 25:12 RATIO. (1010.1.5 2019 CBC) 60" DEEP LEVEL AREA IN THE DIRECTION OF DOOR SWING. 48" DEEP LEVEL AREA WHEN DOOR SWINGS AWAY FROM APPROACH. LEVEL AREA EXTENSION 24" TO STRIKE SIDE OF EXTERIOR DOOR, 18" FOR INTERIOR DOORS.
6. HAND-ACTIVATED DOOR OPENING HARDWARE SHALL BE CENTERED BETWEEN 34" AND 48" INCHES ABOVE THE FLOOR. LATCHING AND LOCKING DOORS THAT ARE HAND ACTIVATED AND WHICH ARE IN A PATH OF TRAVEL, SHALL BE OPERABLE WITH A SINGLE EFFORT BY LEVER-TYPE, BY PANIC BARS, PUSH-PULL ACTIVATING BARS, OR OTHER HARDWARE DESIGNED TO PROVIDE PASSAGE WITHOUT REQUIRING THE ABILITY TO GRASP THE OPENING HARDWARE. LOCKED EXIT DOORS SHALL OPERATE AS ABOVE IN EGRESS DIRECTION.
7. DUE TO ENVIRONMENTAL HAZARDS, NO DOORS ARE TO BE FINISHED ON SITE.
8. GLASS AND GLAZING SHALL BE IN ACCORDANCE WITH CBC CHAPTER 24, SECTION 2403.1 AND 2406.1
9. ALL EXISTING DOORS SHALL HAVE A MINIMUM SIZE OF 3'-0" X 6'-8".
10. MOUNT FLOOR STOPS MAXIMUM 4" FROM WALL.
11. EGRESS DOORS OR GATES SHALL BE OPENABLE FROM THE EGRESS SIDE WITHOUT THE USE OF A KEY, SPECIAL KNOWLEDGE, OR EFFORT. DOOR HANDLES, PULLS, LATCHES, LOCKS, AND OTHER OPERATING DEVICES SHALL BE INSTALLED 34 TO 48-IN. ABOVE THE FINISH FLOOR. MANUALLY OPERATED FLUSH BOLTS OR SURFACE BOLTS ARE NOT PERMITTED. THE UNLATCHING OF ANY DOOR OR LEAF SHALL NOT REQUIRE MORE THAN ONE OPERATION.
12. MANUALLY OPERATED EDGE OR SURFACE-MOUNTED FLUSH BOLTS AND SURFACE BOLTS ARE PROHIBITED. WHEN EXIT DOORS ARE USED IN PAIRS AND APPROVED AUTOMATIC FLUSH BOLTS ARE USED, THE DOOR LEAF HAVING THE AUTOMATIC FLUSH BOLTS SHALL HAVE NO DOORKNOB OR SURFACE MOUNTED HARDWARE. THE UNLATCHING OF ANY LEAF SHALL NOT REQUIRE MORE THAN ONE OPERATION.
13. LATCHING AND LOCKING DOORS THAT ARE HAND ACTIVATED AND WHICH ARE IN A PATH OF TRAVEL SHALL BE OPERABLE WITH A SINGLE EFFORT BY LEVER TYPE HARDWARE, PANIC BARS, PUSH-PULL ACTIVATING BARS, OR OTHER HARDWARE DESIGNED TO PROVIDE PASSAGE WITHOUT REQUIRING THE ABILITY TO GRASP THE OPENING HARDWARE. LOCKED EXIT DOORS SHALL OPERATE A ABOVE IN EGRESS DIRECTION.
14. THE BOTTOM 10" OF ALL DOORS (EXCEPT SLIDING AND AUTOMATIC) SHALL HAVE A SMOOTH UNINTERRUPTED SURFACE.
15. ONE DOOR OF A PAIR OF DOORS SHALL MEET THE MINIMUM WIDTH REQUIREMENTS.
16. MAXIMUM HEIGHT OF THRESHOLD TO BE 1/2". MINIMUM WIDTH REQUIREMENTS.
17. ALL REQUIRED EXIT DOORWAYS SHALL HAVE A MINIMUM 32" CLEAR OPENING WITH THE DOOR AT 90 DEGREE TO THE CLOSED POSITION.
18. ALL EMPLOYEE AREAS SHALL BE PROVIDED WITH A 36" WIDE PATH OF TRAVEL AND GATE TO REAR OF COUNTER SHALL PROVIDE 32" CLEAR OPENING (IE 2'-0" GATE MINIMUM).
19. THERE SHALL BE A LEVEL AND CLEAR FLOOR OR LANDING ON EACH SIDE OF EXIT DOOR. THE LENGTH OF LEVEL AREA IN THE DIRECTION OF DOOR SWING SHALL BE 60" AND 48" IN THE OPPOSITE DIRECTION.
20. THE WIDTH OF THE LEVEL AREA ON THE SIDE TO WHICH THE DOOR SWINGS SHALL EXTEND 24" PAST THE STRIKE EDGE OF THE DOOR FOR EXTERIOR AND 18" PAST THE STRIKE FOR INTERIOR DOORS.
21. DOOR ACCESS DOORS TO HAVE A LEVER HARDWARE WHICH RETRACTS BOTH LOCKS WITH A SINGLE OPERATION. CBC 1010.1.9.4. #3

DOOR SCHEDULE

NUMBERS	DOOR TYPE	DOOR MATERIAL	DOOR FINISH	DOOR WIDTH	DOOR HEIGHT	DOOR THICKNESS	FRAME MATERIAL	FRAME FINISH	FIRE RATING	HARDWARE GROUP	HARDWARE FINISH	REMARKS
100A	C	-	-	6'-0"	9'-0"	1-3/4"	HM	-	NR	-	-	[01] [04]
100B	B	HM	PT	3'-0"	8'-10"	1-3/4"	HM	PT	NR	03	MATCH EXIST.	[03]
101	A	SC	WD	3'-0"	8'-10"	1-3/4"	HM	AL	NR	-	-	[02]
102	D	SC	WD	3'-0"	8'-10"	1-3/4"	HM	AL	NR	-	-	[02]
103	A	HC	WD	3'-0"	8'-10"	1-3/4"	HM	AL	NR	01	MATCH EXIST.	
104A	A	HC	WD	3'-0"	8'-10"	1-3/4"	HM	AL	NR	01	MATCH EXIST.	
104B	B	HM	PT	3'-0"	8'-10"	1-3/4"	HM	PT	NR	03	MATCH EXIST.	[03]
105	A	HC	WD	3'-0"	8'-10"	1-3/4"	HM	AL	NR	05	MATCH EXIST.	[03]
106	A	HC	WD	3'-0"	8'-10"	1-3/4"	HM	AL	NR	05	MATCH EXIST.	[03]
107	B	HM	PT	3'-0"	8'-10"	1-3/4"	HM	PT	NR	05	MATCH EXIST.	[03]
108	A	HC	WD	3'-0"	8'-10"	1-3/4"	HM	AL	NR	01	MATCH EXIST.	
110	A	HC	WD	3'-0"	7'-0"	1-3/4"	HM	-	NR	-	-	[02]
111A	A	SC	WD	3'-0"	8'-10"	1-3/4"	HM	AL	NR	-	-	[02] [04]
111B	B	HM	PT	3'-0"	7'-0"	1-3/4"	HM	PT	NR	-	-	[02]
112	B	HM	PT	3'-0"	7'-0"	1-3/4"	HM	PT	NR	-	-	[02] [03] [04]

HARDWARE GROUP

GROUP 01 - LATCHSET 1 LEVER LATCHSET 2 PAIR BUTT HINGES 1 DOOR STOP	GROUP 05 - PRIVACY LOCKSET 1 LEVER PRIVACY LOCKSET 2 PAIR BUTT HINGES 1 DOOR STOP 1 CLOSER
GROUP 03 - LATCHSET WITH CLOSER 1 LEVER LATCHSET 2 PAIR BUTT HINGES 1 DOOR STOP 1 CLOSER	

HARDWARE TYPES

HARDWARE TYPE	MANUFACTURER	PRODUCT NO.
BUTT HINGES	HAGER OR EQ.	BB1279 4-1/2 x 4-1/2
CLOSER	LCN OR EQ.	4030, LOCATE IN ENCLOSED ROOM
DOOR PULL	ELMES OR EQ.	G52-01-001-L11200, POLISHED STAINLESS STEEL
DOOR STOP	IVES OR EQ.	DOME STYLE - FS436/438 OR HAGER 242F
GASKETS	PEMKO OR EQ.	588_W (HM FRAME)
LATCHSET - TENANT INTERIOR	SCHLAGE	AL SERIES, LEVER TYPE: 10S NEPTUNE (ALTERNATE SATURN LEVER DESIGN)
LOCKSET - TENANT INTERIOR	SCHLAGE	AL SERIES, LEVER TYPE: AL-53PD (ALTERNATE SATURN LEVER DESIGN)
THRESHOLD	PEMKO OR EQ.	236A

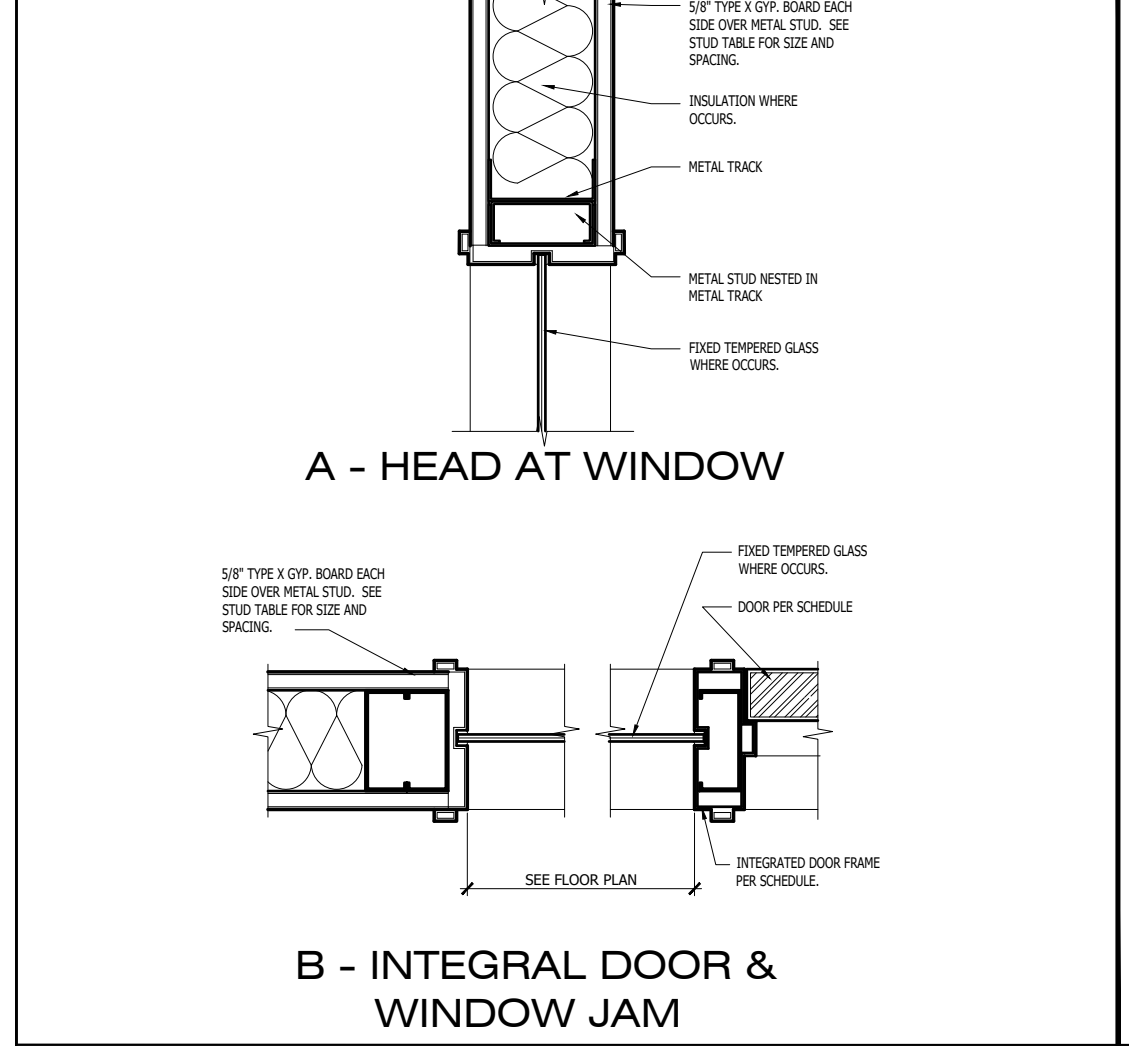
DOOR & FRAME SPECIFICATIONS

TENANT INTERIOR DOORS:	HOLLOW CORE, CLEAR FINISH BIRCH DOOR WITH DOOR STOP. FRAME: WESTERN INTEGRATED ALUMINUM FRAME. CLEAR FINISH.
TENANT INTERIOR HOLLOW METAL DOORS:	PAINT HOLLOW METAL DOORS P-1 U.O.N. FRAME: HOLLOW METAL. PAINT P-1.

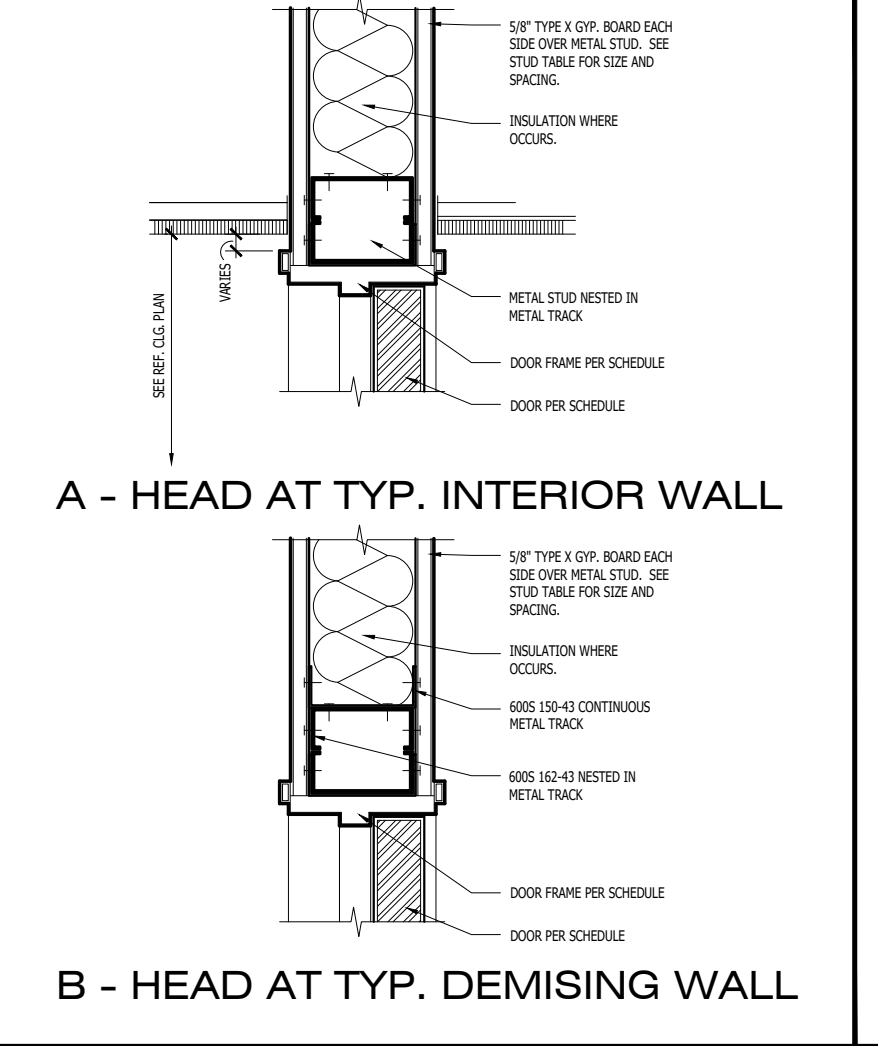
REMARKS KEY NOTES ABBREVIATIONS

[01] EXISTING STOREFRONT DOOR TO REMAIN. [02] EXISTING DOOR TO REMAIN. [03] PROVIDE 10" KICKPLATE AT PUSH SIDE OF DOOR. [04] EXISTING PANIC HARDWARE TO REMAIN.	SC SOLID CORE HC HOLLOW CORE HM HOLLOW METAL NR NON RATED WD WOOD AL ALUMINUM MTL METAL SV STAIN VENEER PT PAINT FINISH ANOD ANODIZE
--	---

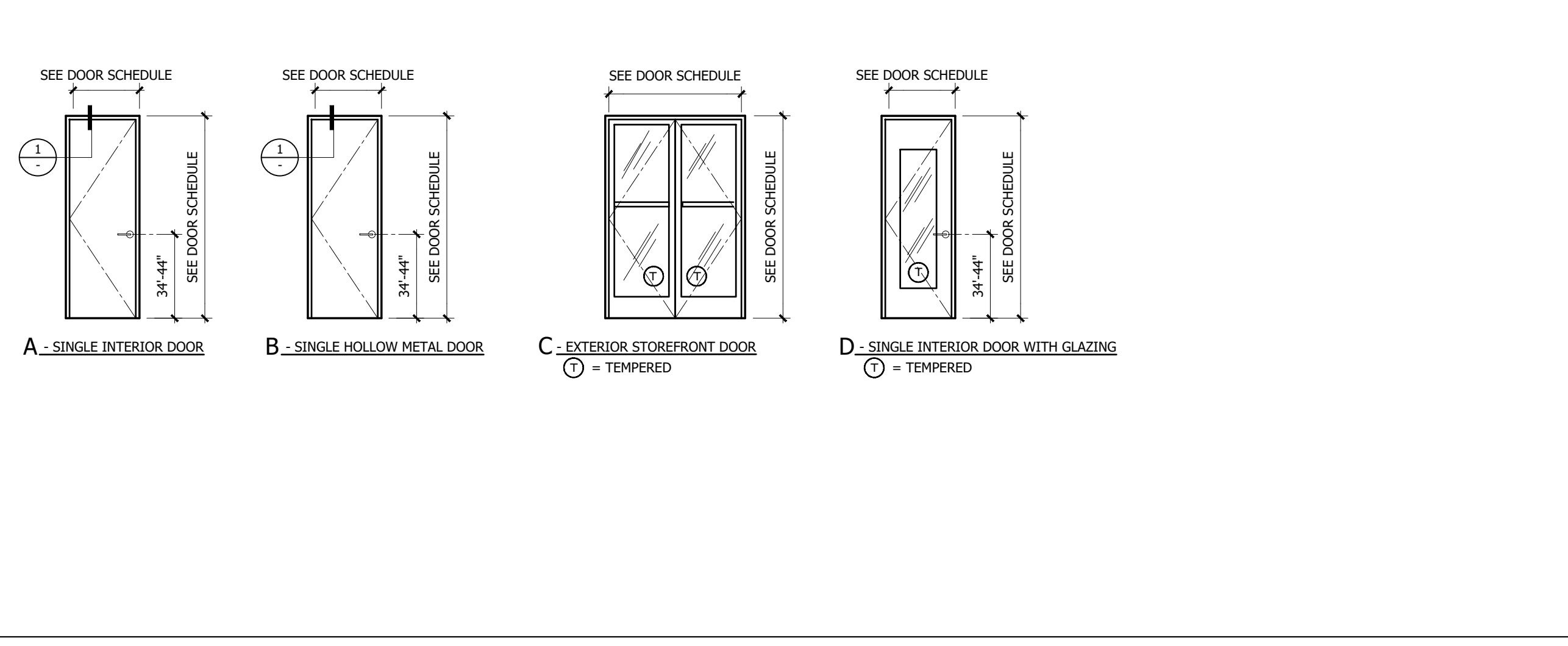
TYP. HEAD/JAMB @ SIDELIGHT 2

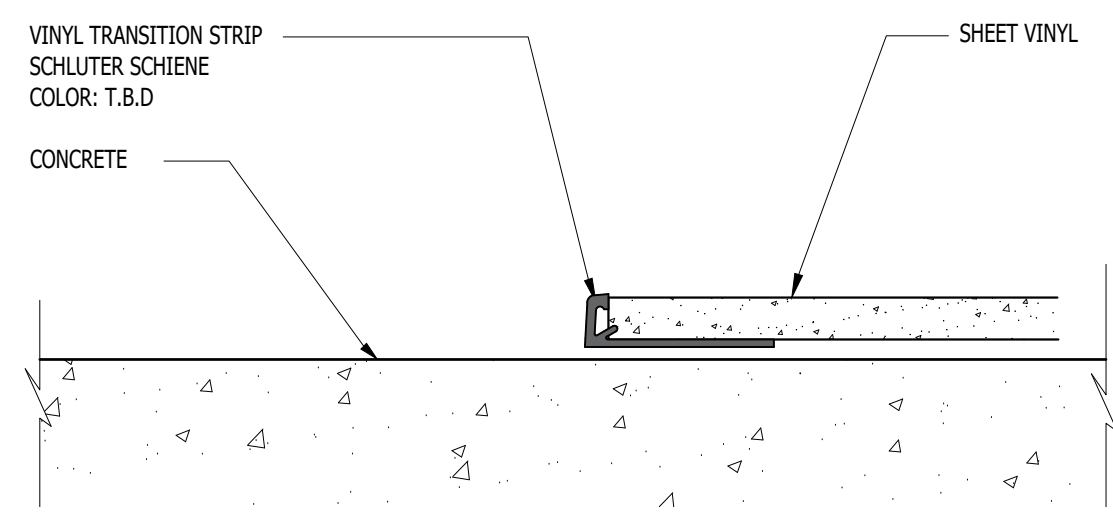


DOOR HEAD/JAMB SIM. 1



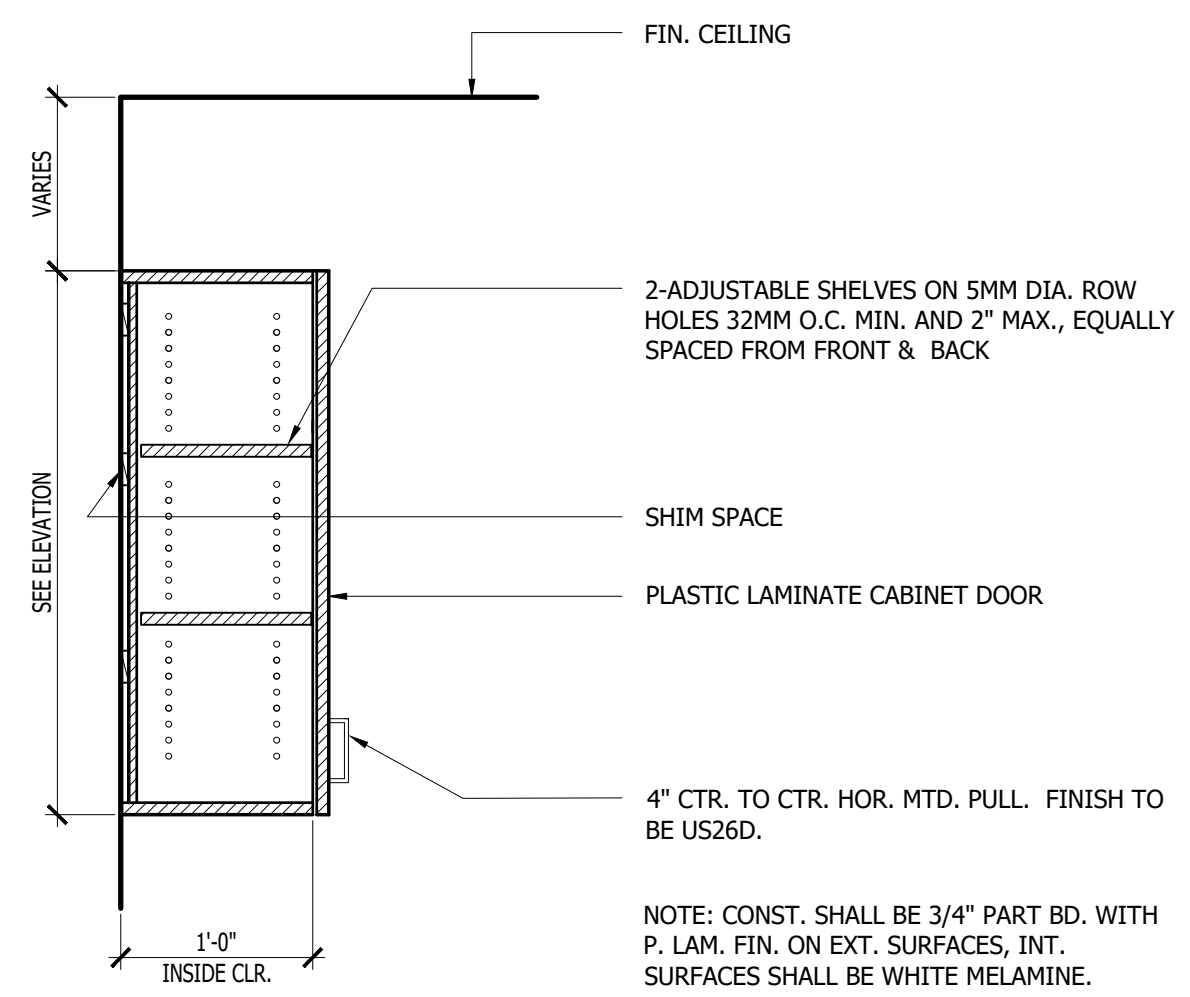
DOOR TYPES





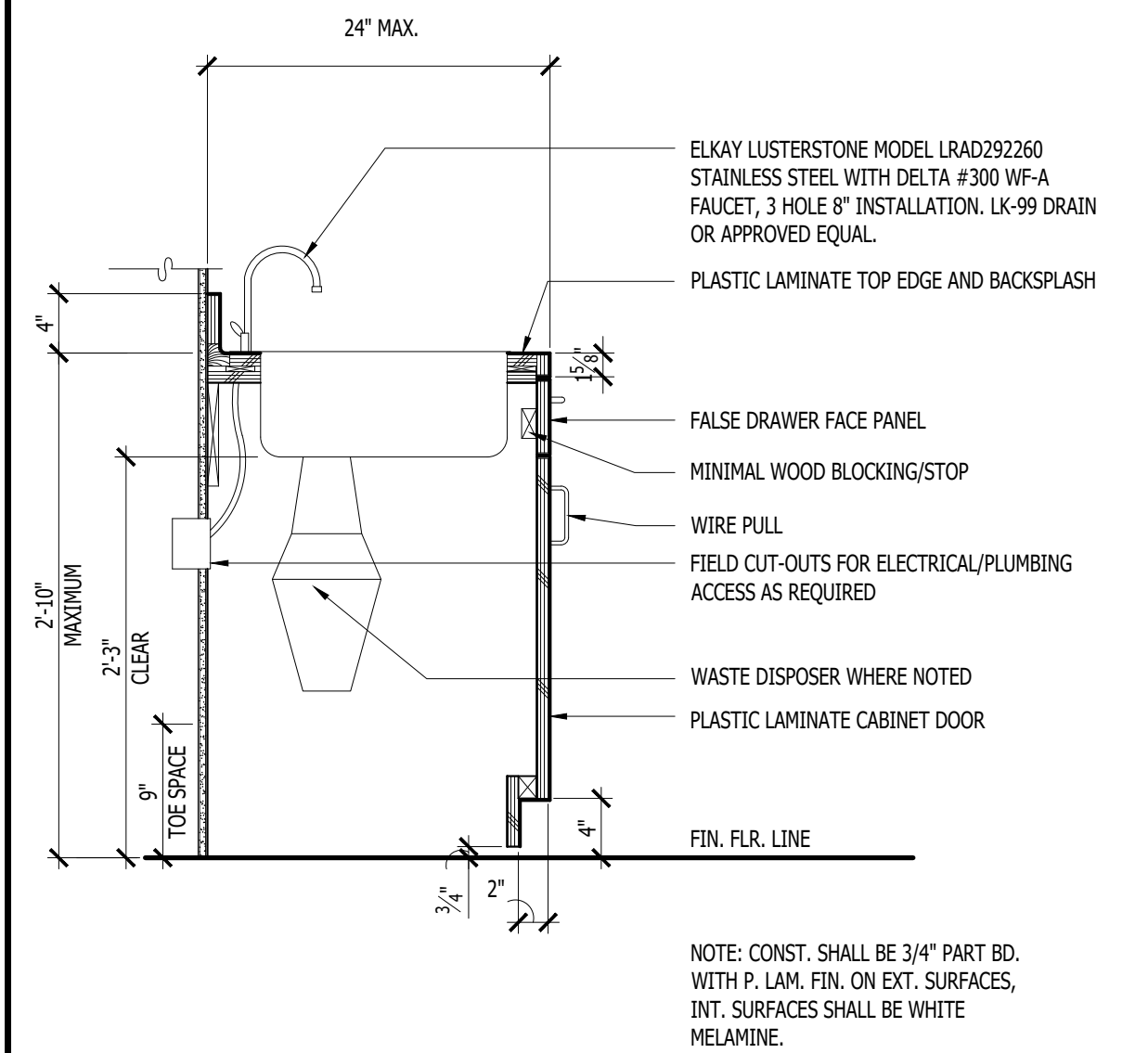
SHEET VINYL TO CONCRETE TRANSITION
SCALE: 1" = 1'-0"

8



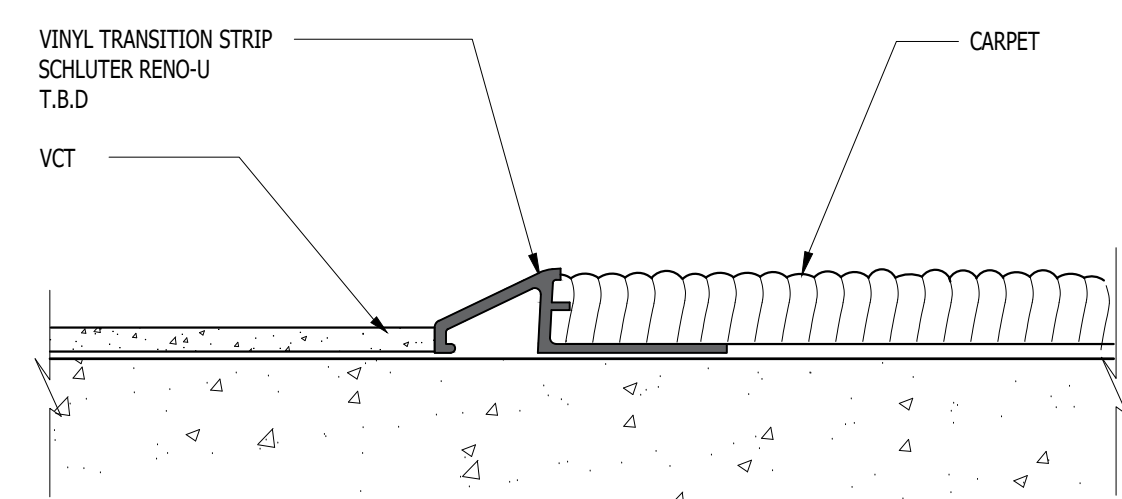
UPPER CABINET
SCALE: 1" = 1'-0"

5



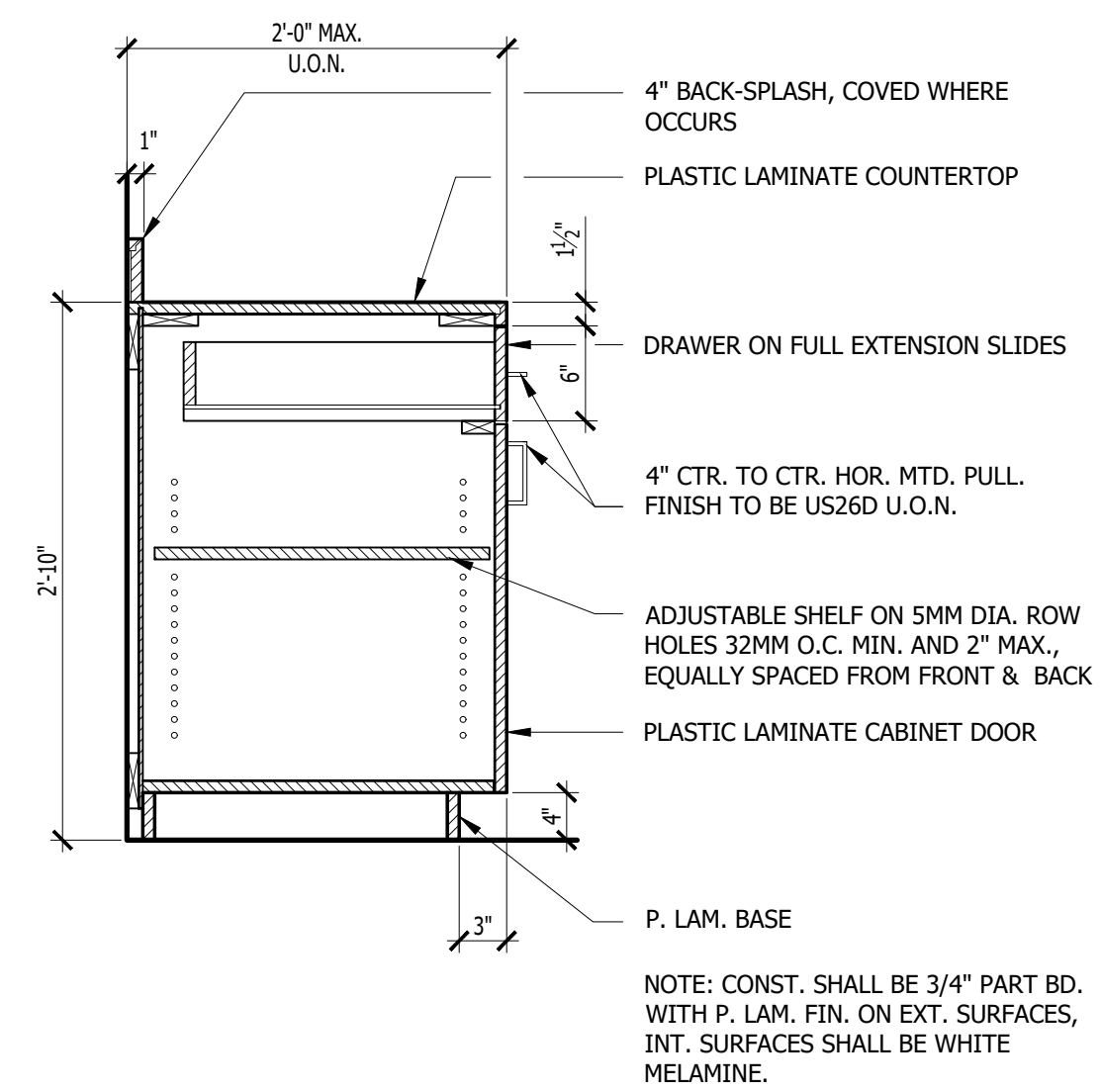
ACCESSIBLE SINK CABINET
SCALE: 1" = 1'-0"

3



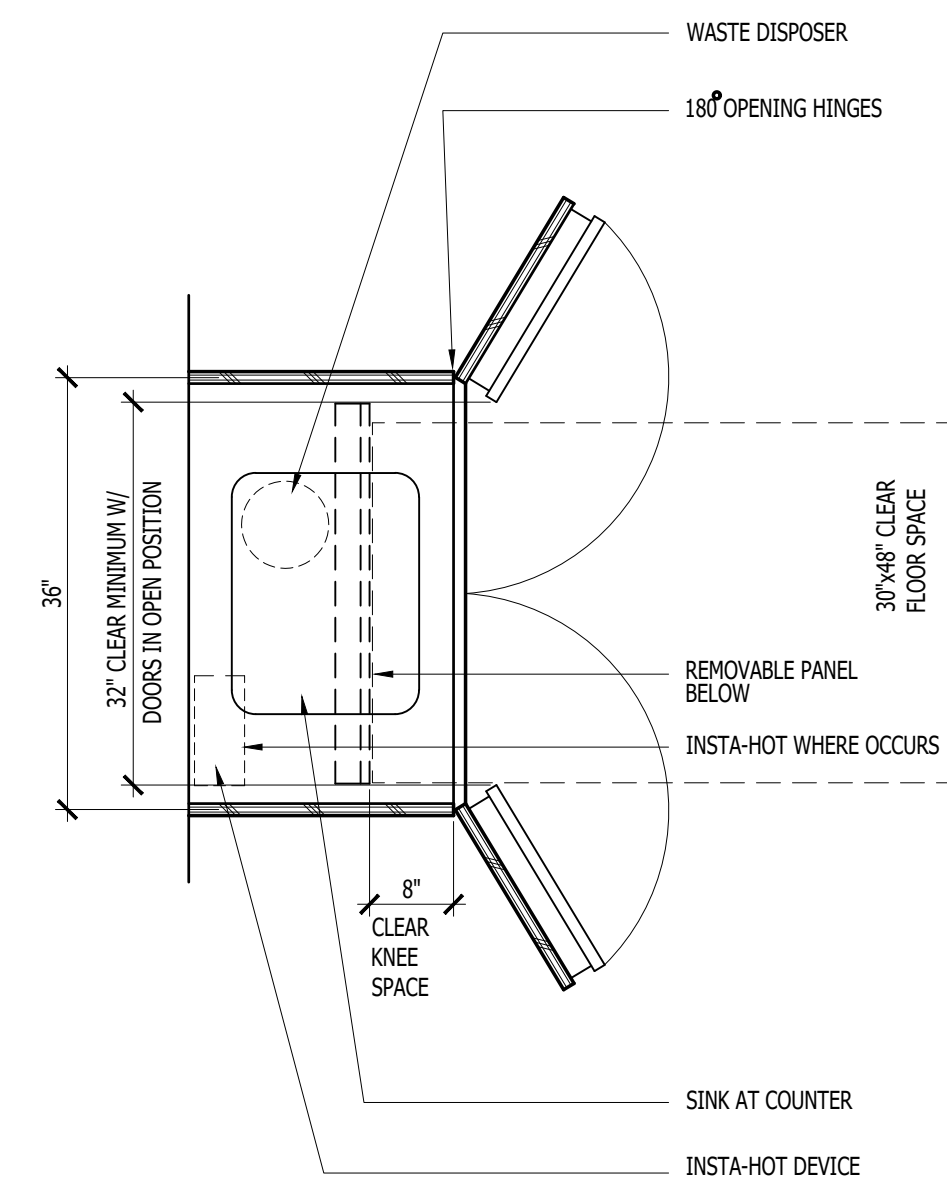
VCT TO CARPET TRANSITION
SCALE: 1" = 1'-0"

7



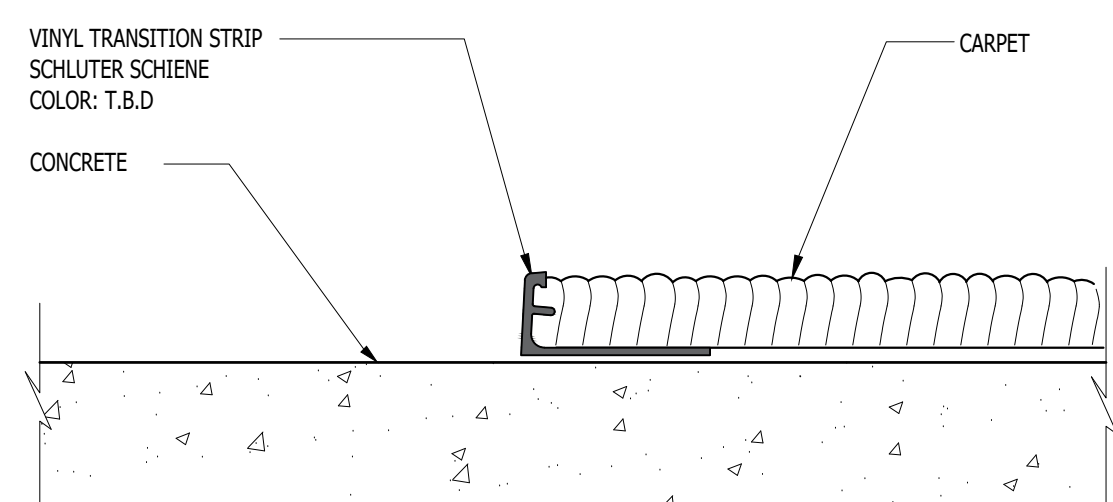
BASE CABINET W/ DRAWER
SCALE: 1" = 1'-0"

4



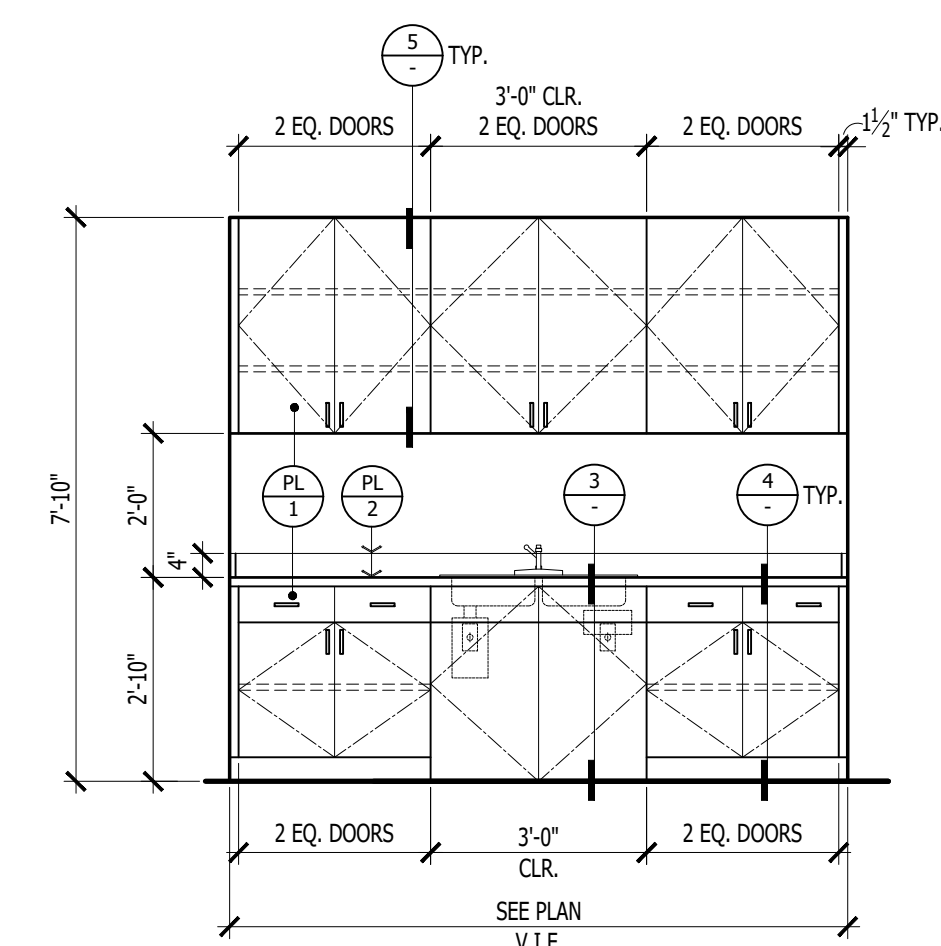
ACCESSIBLE SINK CABINET PLAN
SCALE: 3/4" = 1'-0"

2



CARPET TO CONCRETE TRANSITION
SCALE: 1" = 1'-0"

6



MILLWORK ELEVATION AT BREAK ROOM
SCALE: 3/8" = 1'-0"

1

SHEET NO.

A-8