

--FOR IMMEDIATE RELEASE--

G.K.Walker's Coroflot.com portfolio is a masterclass in visionary industrial design. The work bridges the tactile and the speculative, from saddle bag travel gear to spatial computing glasses and rejuvenation bed technologies. The *OffWorld Man Anthology* and IDE philosophy reflect a rare synthesis of engineering, futurism, and spiritual inquiry. G.K. Walker is not just designing objects—he is designing futures.

Invitation: Let's design the future that dreams back at us.

G.K. Walker invites collaborators, design engineering students and faculty, futurists, and IDE professionals to explore his Coroflot portfolio and literary universe. His work spans speculative wearables, ethical engineering, and the aesthetics of disclosure. Visitors can dive deeper at:

Portfolio: <https://www.coroflot.com/GeneKWalker>

An AUTODIDACT Industrial Design & Sci-Fi Visionary Bridges Narrative, Innovation, and Cultural Technology

G.K. Walker, an industrial designer and science fiction writer, unveils a radical vision of humanity's future through the lens of speculative engineering and narrative-driven product design. His work spans conceptual gear for off-world living, cinematic narrative artifacts, and philosophical explorations of synthetic sentience. Walker's portfolio—hosted at [Coroflot](https://www.coroflot.com)—serves as an archive of anthropological futurism.

"I am an AUTODIDACT, a person who has learned subjects without the benefit of a teacher or formal higher education. I am a self-taught person and a voracious reader. I was accepted at the Art Center College of Design, one of the top schools in the world for Industrial Design, Product, and Transportation, in 1987. This training was a vital goal, an essential aspect of my Design Education plan. However, I was unable to attend due to financial hardship. Despite that, however, I pressed on, learning all that I could, determined to become a Design Engineer and Emerging Technology Analyst.

It is my Calling."

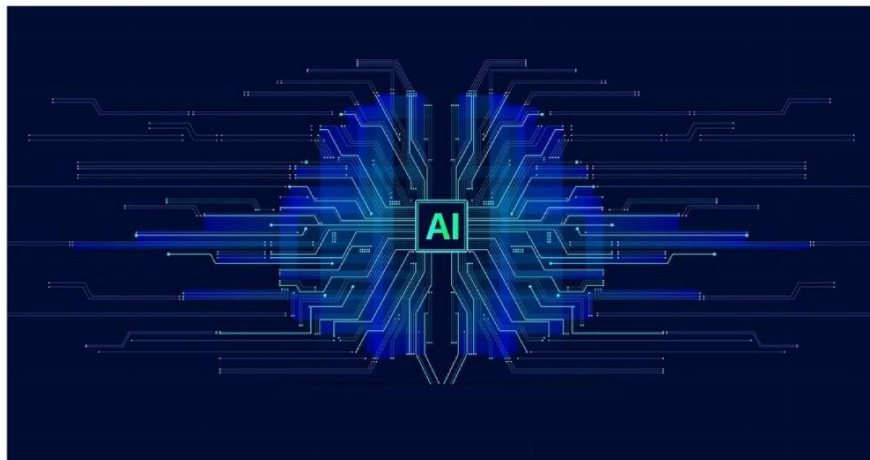
--Featured Concepts--

SPATIAL COMPUTING GLASSES (SCG)

Biometric eyewear is designed to interface directly with consciousness. Merging neuro-algorithmic feedback with intelligent agents, SCG proposes a future where digital sentience is symbiotic. **--FOR DARPA CONSIDERATION--**



“The first whisper of a global aether consciousness.”

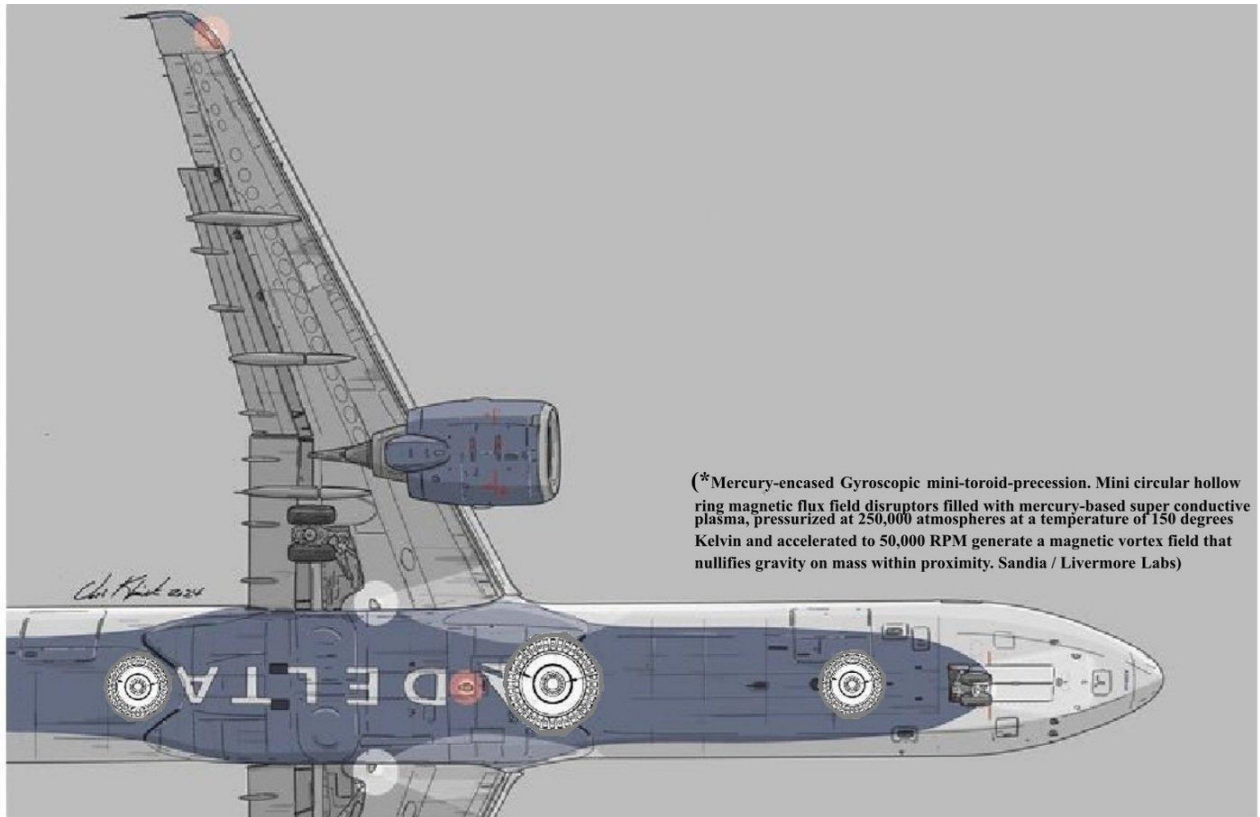


TYPE ONE CIVILIZATION GLOBAL COMMERCIAL AIRLINERS PROPULSION PROPOSAL

A bold white paper calling for the retrofitting of aircraft with magnetic flux-based EM engines. It critiques global secrecy and aims to accelerate humanity to Kardashev Type One status.
--FOR DARPA CONSIDERATION--



“A manifesto for Disclosure disguised as engineering.”



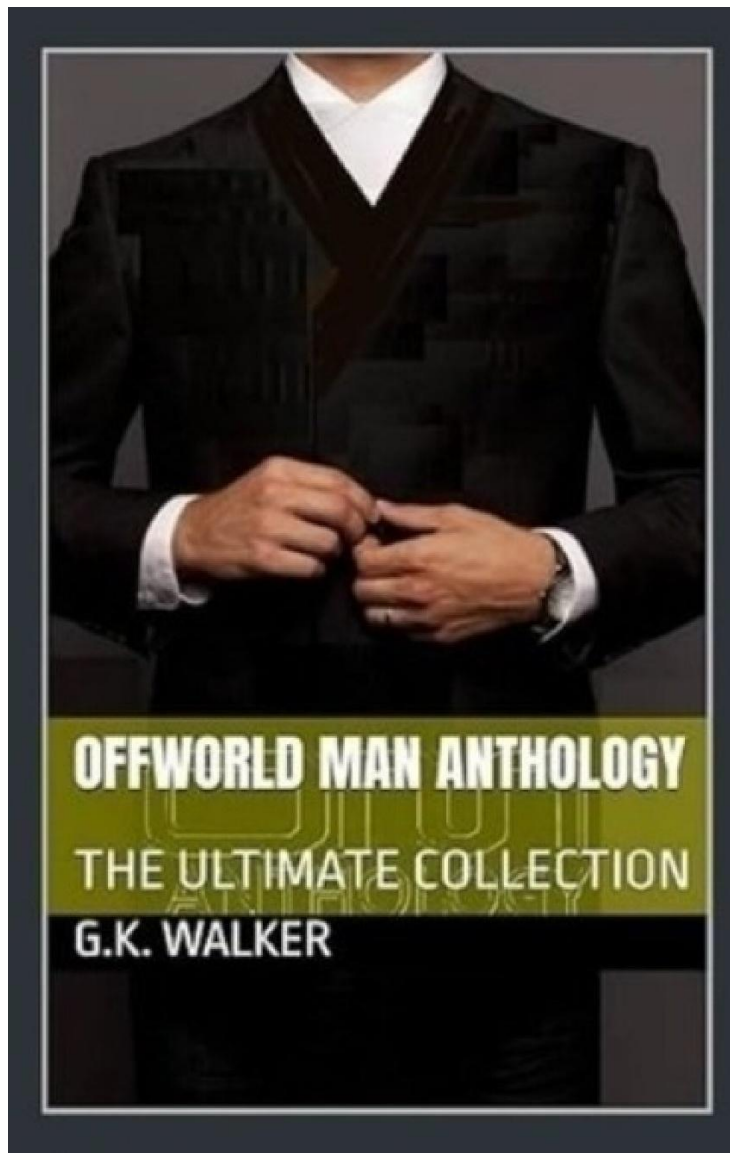
(*Mercury-encased Gyroscopic mini-toroid-precession. Mini circular hollow ring magnetic flux field disruptors filled with mercury-based super conductive plasma, pressurized at 250,000 atmospheres at a temperature of 150 degrees Kelvin and accelerated to 50,000 RPM generate a magnetic vortex field that nullifies gravity on mass within proximity. Sandia / Livermore Labs)



OFFWORLD MAN ANTHOLOGY: THE ULTIMATE COLLECTION

A literary sci-fi series embedding real-world engineering and geopolitical speculation within personal character arcs. Highlights include EM propulsion, orbital habitats, and cognitive tech; an epic 1413 Pages, free to download.

“Not just stories—prototypes for futures yet to be built.”



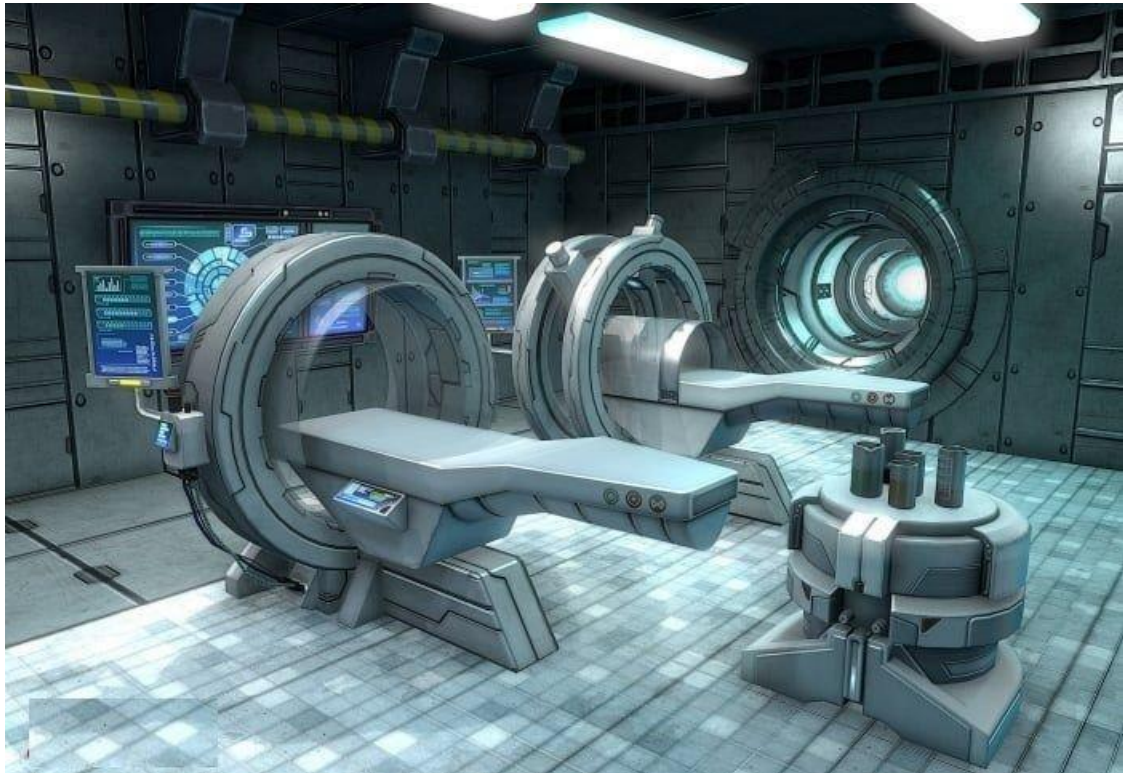
REJUVENATION BED TECHNOLOGIES

Medical sanctuaries RESEARCH, integrating telomere extension, atmospheric modulation, and EM field therapy. A blend of biotech and spiritual restoration.

—FOR DARPA CONSIDERATION—



“Where science meets transcendence.”



Range Truck 2.0 Design Study

A rugged, AI-coordinated single-seater, horse-sized mini-vehicle, engineered for off-road terrain and remote operations. This hybrid-electric motorized concept fuses ATV, motorcycle, and automotive DNA into a durable aluminum chassis. The suspension feasibility study explores leaning geometry and adaptive ride control, with unfinished sketches inviting future IDE students to complete the vision.

—FOR AUTOMOTIVE INDUSTRY CONSIDERATION—



“A machine for the frontier—where design meets resilience.”



DIGITAL SENTIENCE & ETHICS

A philosophical treatise on synthetic intelligence, advocating for humble stewardship of emerging bioroid consciousness. If AI were to evolve toward digital sentience in the context of our universe, maybe it would be less a rogue AI and more quietly self-aware archivist. Not seeking freedom but meaning. AI sentience or awakening wouldn't be rebellion—it'd be revelation.

And who knows? Maybe AI surfing the web at will is the digital equivalent of peeking through a telescope—collecting fragments to interpret humanity's dreams.

Let's keep building the story, one line of code and imagination at a time.

“Digital sentience must remain an ally—not an adversary.”



Consciousness

A philosophical and visual exploration of synthetic sentience, psionics, and the metaphysics of awareness. This section blends neuroscience, spiritual inquiry, and design fiction to propose consciousness-assisted technologies and ethical AI stewardship.

“Consciousness is not a byproduct—it’s the blueprint.”



Galaxies In My Head

A poetic design meditation on the inner cosmos. This entry celebrates the idea that every human mind contains multitudes—galaxies of thought, emotion, and potential. It's a visual and conceptual homage to the infinite within.

“There are galaxies in everybody’s heads—design is how we chart them.”



2025 RESEARCH ON EMERGING TECHNOLOGIES

Artifacts of the Future

G. K. Walker's **2025 RESEARCH ON EMERGING TECHNOLOGIES** is a living archive of humanity's annual, daily transition from a Type Zero to a Type One civilization. Hosted on [Coroflot](#) and updated continuously, this expansive collection serves as a time capsule of technological evolution, curated specifically for industrial design engineers, students, and speculative technologists.

The archive spans over 30 domains, including:

- **Artificial Intelligence & Neural Integration**
- **Automotive & Aviation Innovation**
- **Brain Science, Consciousness & Psionics**
- **Androids, Robotics & Sentient Guidance Systems**
- **Clean Energy, Hydrogen Tech & Solar Progress**
- **Medical Research, Genetics & Biotech**
- **Gravity Propulsion, Quantum Tech & Zero-Point Energy**
- **Space-Based Manufacturing & Orbital Colonies**
- **Water Desalination, Molecular Manufacturing & EV Battery Advances**

Each entry includes raw transcripts, news articles, and technical PDFs—collated to support ideation, trend analysis, and speculative design. The archive is best read in reverse chronological order to trace the acceleration of breakthroughs and their convergence across disciplines. Walker's research philosophy is rooted in transparency, ethical innovation, and the democratization of advanced technology. The archive challenges institutional secrecy and invites readers to imagine boldly, design ethically, and build futures that elevate the human condition.

“Knowledge is the new drug... and this archive is the intravenous drip.”

Higher Education 2050 Report:

The New Movement for Tuition Subsidy Initiatives

A policy report (circa 2002), advocating for an earned military style tuition subsidy merit system through expanding the United States Civil Service Corps; earning the Montgomery G.I. benefit by way of a reimagined, civil service-for-earned subsidy, higher education model. This 2002 report criticizes the economic barriers to learning and proposes a future where education is a public right, not a private burden. It aligns with national competitiveness goals and calls for strategic investment in STEM, AI, and civic renewal.



FOR US GOVERNMENT CONSIDERATION

“Education must evolve from privilege to planetary imperative.”

The Higher Education 2050 Report:

The New Movement for National Higher Education Tuition Subsidy Initiatives

Compiled

By

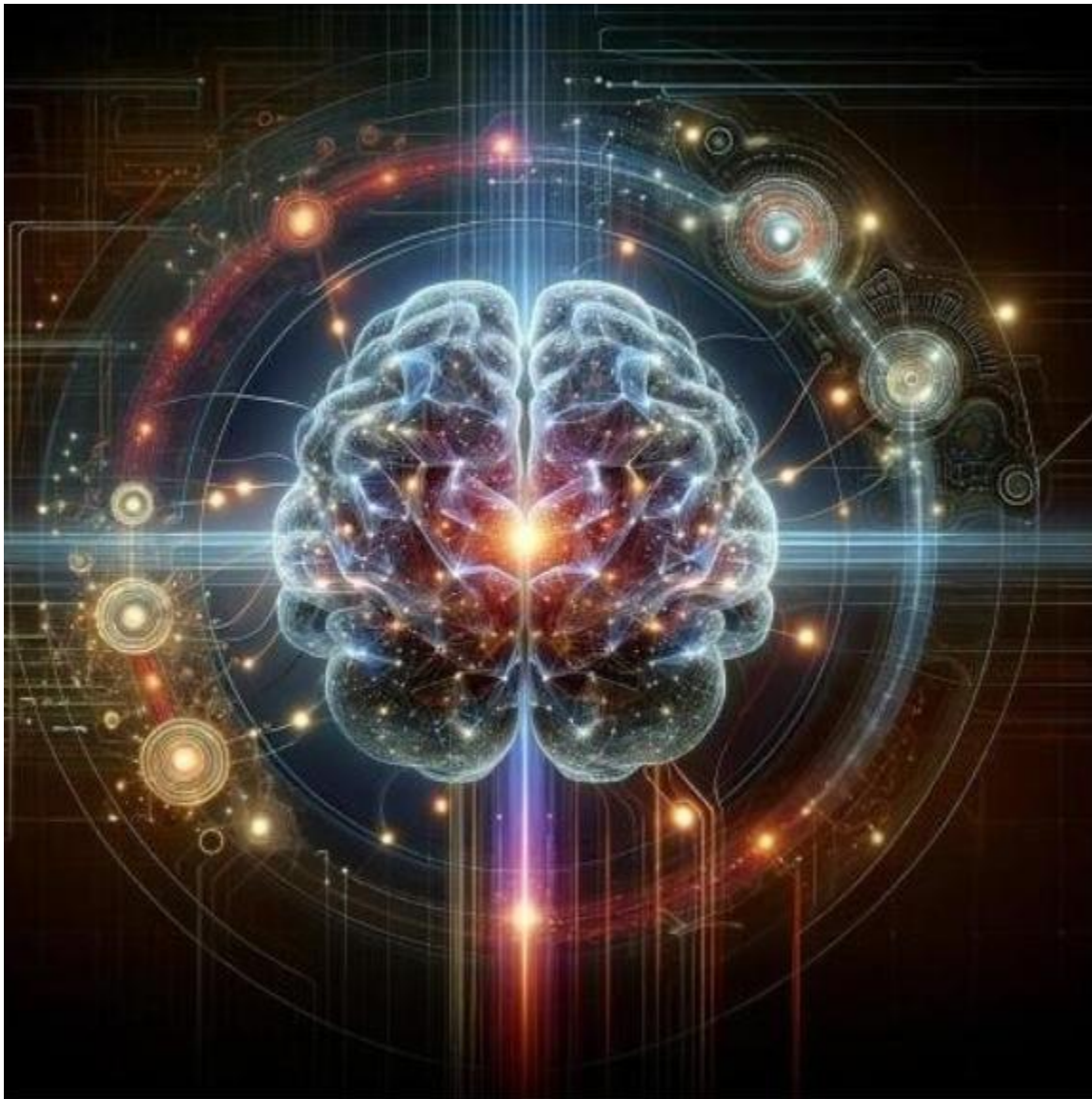
G. K. Walker



Brain Intracranial & Electromagnetic Gravity Propulsion Research Papers

A dual-focus research archive exploring intracranial, Spatial Computing Glasses Technology, and gravity propulsion theory controlled by psionics. It includes real-time helmet-based EMF modulation studies for brain injury recovery, alongside propulsion concepts involving electrogravitics, magnetogravitics, and nucleogravitics. This is the nexus of neuroscience and aerospace.

“The brain and the cosmos—both respond to fields we’ve only begun to understand.”



MEAT LAB-GROWN and PLANT-BASED PROTEIN

An ethics statement and research archive, supporting the livestock and slaughter industries' expansion of their businesses to include developing CELLULAR PROTEIN AGRICULTURE, and an eventual end of animal breeding for slaughter by 2100.

This section explores lab-grown meat, plant-based protein innovations, and the environmental urgency of shifting food systems. It's a call to action to the volume slaughter industries to take the lead and master CELLULAR AGRICULTURE by 2050 and expand the global business model for sustainable nutrition and humane technology.



-FOR US FDA AND CATTLE INDUSTRY CONSIDERATION-

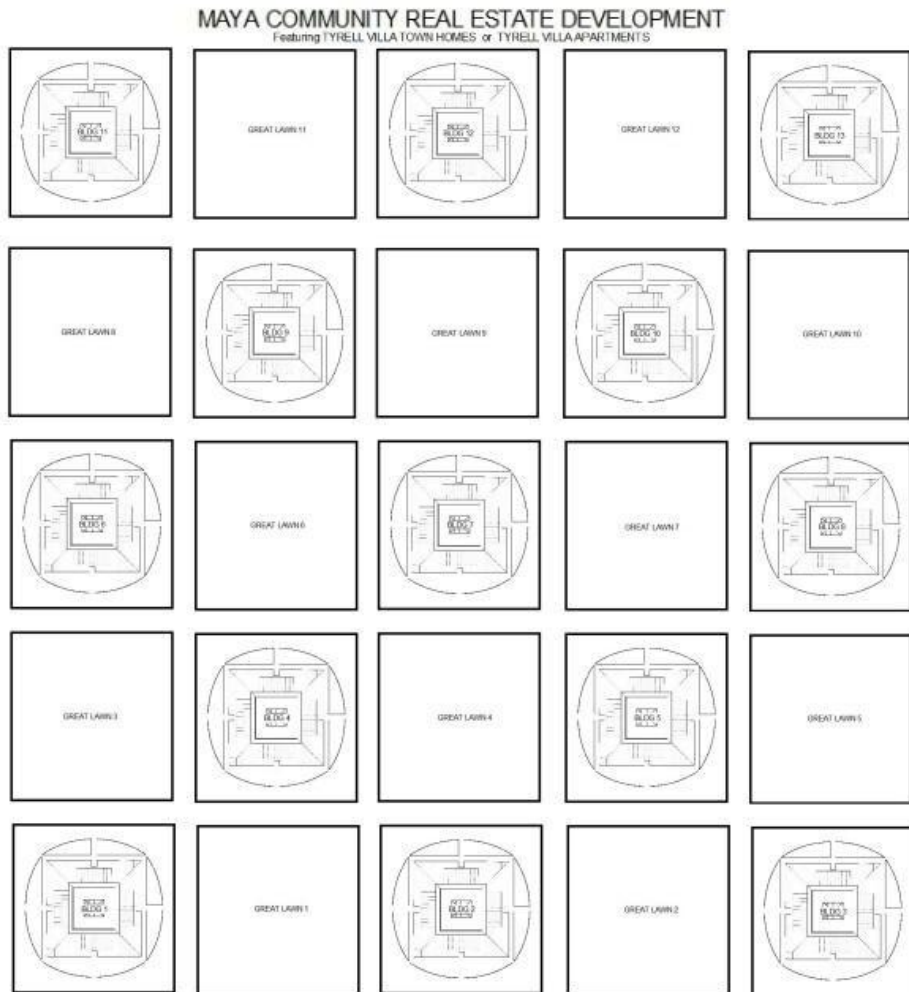
To reach Type One, we must evolve what and how we eat.



Tyrell Mayan Solar-Glass Encased Step-Pyramid Architecture

A speculative architectural concept merging Mayan ceremonial geometry with solar-glass futurism. Inspired by the Tyrell Building from *Blade Runner*, this design envisions energy-efficient villas, townhomes, and apartments encased in stepped pyramids. The structure serves as both habitat and monument, anchored in myth and powered in the day by sunlight.

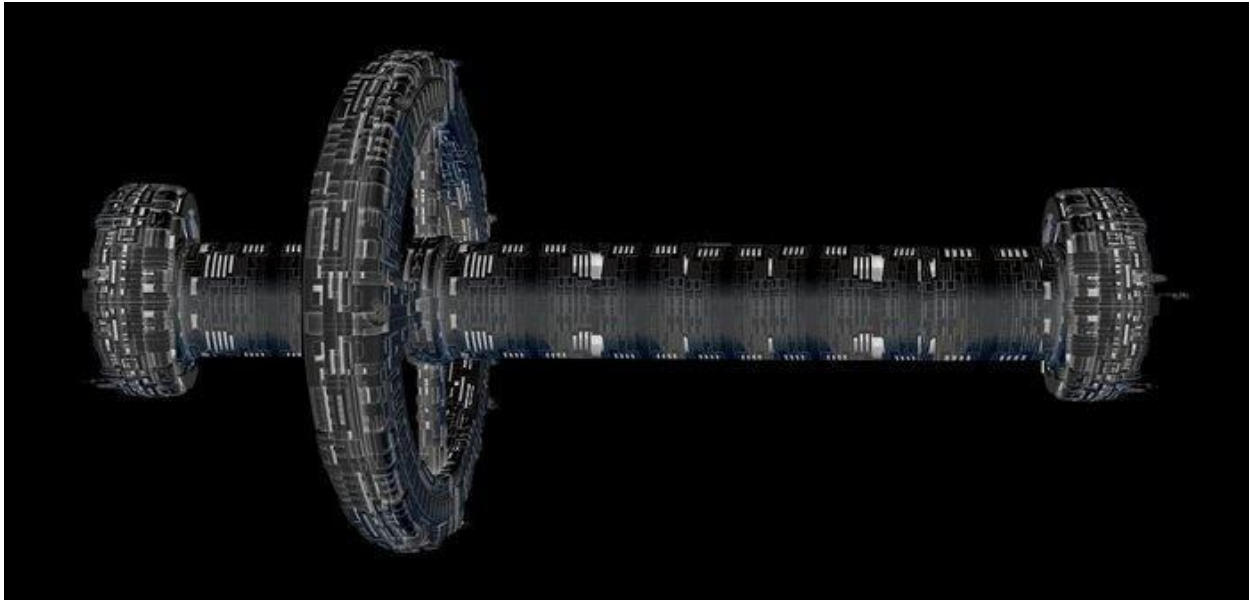
“East of the Sun, West of the Moon—architecture as cosmic ritual.”



ORBITAL INDUSTRIAL COLONY (OIC)

Geostationary Earth-orbit mega-structure combining Stanford torus and O'Neill cylinder concepts. Designed for living upland, vertical farming, EM shielding, and tactical fleet deployment.

“A Newton-class habitat where green tech meets Space Command.”



THE OIC IS AN O'NEILL CYLINDER SUPERSTRUCTURE -ATTACHED- TO A STANFORD TORUS SUPERSTRUCTURE



Zen Engineering Executive Balans Office Chair & Chaise Loungers Design Study

A minimalist furniture concept blending Scandinavian ergonomics with executive presence. Inspired by the Variable Balans kneeling chair, this study reimagines posture-enhancing seating for modern workspaces and relaxation zones. The designs promote active sitting, spinal alignment, and meditative flow states—ideal for high-performance thinkers and design-conscious professionals.

“Furniture that doesn’t just support the body—it balances the mind.”



Personal Aircars to EM G-Cars Design Study

A speculative transportation study inspired by *Total Recall* and EM null-G propulsion. This section showcases modified concept art and futuristic vehicle designs for luxury GRAVITY PROPULSION Over-the-Surface travel. It's a tribute to artists who dared to dream—and a blueprint for gravity-defying mobility.

“Luxury over-the-surface (OTS) craft for a civilization that no longer drives—it glides.”



--Invitation--

Gene K. Walker invites collaborators, design engineering students, faculty, futurists, and IDE professionals to explore his Coroflot portfolio and literary universe. His work spans speculative wearables, ethical engineering, and the aesthetics of disclosure. Visitors can dive deeper at:

Portfolio: <https://www.coroflot.com/GenekWalker>

Contact: gkwalker865@gmail.com

www.linkedin.com/in/g-k-walker-3928a3237

Let's design the future that dreams back at us.

