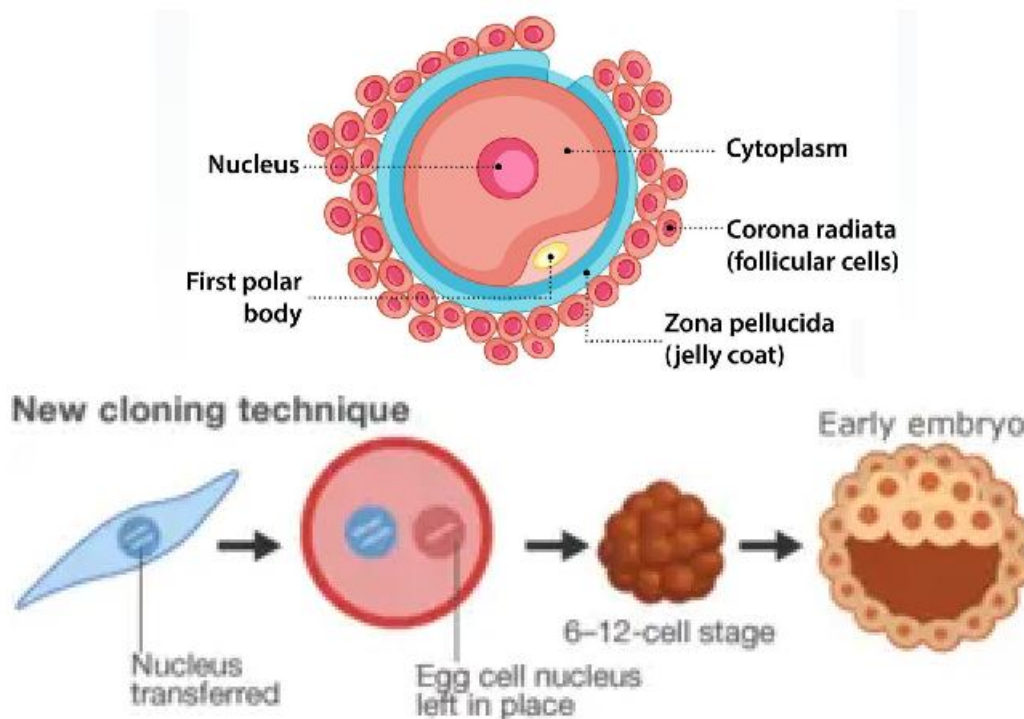


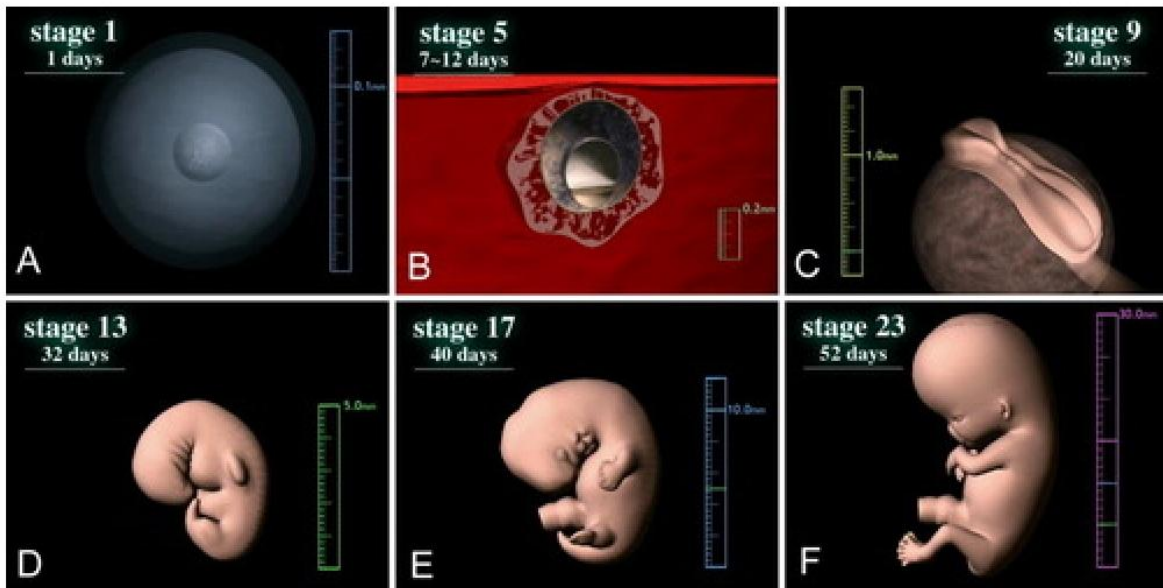
EVE 2.0 CLONING PROCESS: EVE DUMONT IS RECREATED

THE GENESIS LONGEVITY INSTITUTE IN SINGAPORE IS A CONSORTIUM BIOTECH FACILITY, SECLUDED IN THE GLOBAL BIOTECH INDUSTRY'S EQUIVALENT OF SILICON VALLEY.

BIOMOLECULAR ENGINEERS INJECTED THE GENETICALLY ALTERED REPROGRAMMED ADULT STEM CELLS AND MATRIX NUCLEUS FROM THE OVA OF EVE NICHELE DUMONT, INTO THE ENUCLEATED OVUM OF A HEALTHY FEMALE DONOR.



HER MITOCHONDRIAL DNA TRANSCRIPTION FACTORS WERE INJECTED INTO Rh NEGATIVE DONOR OVUM, THEN GIVEN A MILD ELECTRICAL CHARGE TO FUSE THE TWO AND STIMULATE CELL DIVISION IN 2028.



A THE RESULTING NEW CELL WAS IMPLANTED INTO SOPHISTICATED, SPECIALLY DESIGNED, EXPANDING ORGANIC COCOON FILLED WITH A NUTRIENT-RICH, OXYGENATED SOLUTION.

THE COCOON IS A THICK, OVAL-SHAPED CRYSTAL GLASS TANK, COATED IN AN ELECTRONICALLY OPAQUED, HIGH-DEFINITION DIGITAL IMAGERY FILM, AND INNER LINED WITH FLOWING, CURTAIN-LIKE FOLDS OF GENETICALLY ALTERED WOMB TISSUE; A PERMEABLE, TRANSLUCENT ORGANIC MEMBRANE CAPABLE OF DIFFUSING LIGHT, AND NOURISHING THE GROWING EMBRYO DURING THE TANK'S PURIFYING AND REPLENISHING CYCLES, EVERY 15 MINUTES, 24 HOURS A DAY.



The success of the artificial gestation system hinges on maintaining the fetus–placenta–womb as a coherent resonant system—not just plumbing and nutrients. The artificial womb, designed to conserve Frequency Momentum (FM), matches mechanical/EM phase, and recreates the mother’s multiband vibrational envelope. That yields a concrete, testable blueprint for an artificial gestation platform. A living system that has embedded standing-wave structures inside a quantum-acoustic superfluid background. The artificial womb is a tunable cavity that couples fluid mechanics, bio-electromagnetism, and mechanical micro-rhythms (heartbeat, respiration, uterine slow waves). A Resonant Gestation System, comprising a set of

subsystems that keep the FM of the artificial womb conserved and phases aligned: Amniotic Field Module (AFM) Tunable fluid with matched density/viscosity and acoustic impedance to human amniotic fluid. Closed-loop spectral shaper drives sub-Hz to ~200 Hz micro-vibrations that mimic maternal heartbeat (≈ 12 Hz), respiration (~ 0.2 – 0.4 Hz), and uterine slow waves (~ 0.05 – 0.1 Hz).

Control target: keep integrated FM (0.01–200 Hz) within maternal envelopes $\pm 10\%$. Placental Exchange & Pulsatile Perfusion (PEP) Microfluidic oxygenation and nutrient exchange with pulsed (not steady) flow to preserve shear stress rhythms seen in real cord/placenta. Drive law: Perfusion pulses are shaped so that the power spectral density of wall shear matches in utero recordings; avoid DC-dominant flows that flatten endothelial signaling. Electromagnetic Hygiene & Coherence (EMHC) Low-amplitude, broadband EM background matching maternal tissues (ELF/ULF) plus strict shielding from switching supplies. Phase-lock controller minimizes $|\phi_{\text{artificial}} - \phi_{\text{maternal}}|$ in the ELF band. (This is $P(x,t)$ in action.) Hard limits on RF transients; no PWM at fetal-brain harmonics. Maternal Proxy Coupler (MPC) Wearables on the mother (or chosen caregiver) stream heartbeat, respiration, voice, gait microshakes, and circadian light cues to the chamber in real time.

Voice and bone-conducted spectra are injected through the fluid as near-field vibrations rather than loudspeaker air sound. Photonic Circadian Engine (PCE) Light scheduling mimics uterine red/IR bias (through tissue) with gradual 24-h cycles, not abrupt blue spikes. Near-IR (safe intensities) supports mitochondrial rhythms; no “clinical white” lighting. Immune-Exosome Dial-a-Field (IEDF) Maternal serum/exosome library (screened) delivered on circadian and gestational phase schedules. The “when” matters as much as the “what.” Shock & Startle Guard (SSG) Inertial sensors cancel external jolts with counterphase fluid actuation so the fetus experiences smooth, low-jerk motion. AI Resonance Supervisor (AIRS) Instead of optimizing “vitals,” AIRS optimizes FM setpoints across bands with multi-objective constraints: oxygenation, shear spectra, acoustic PSD, EM phase error, and stress-

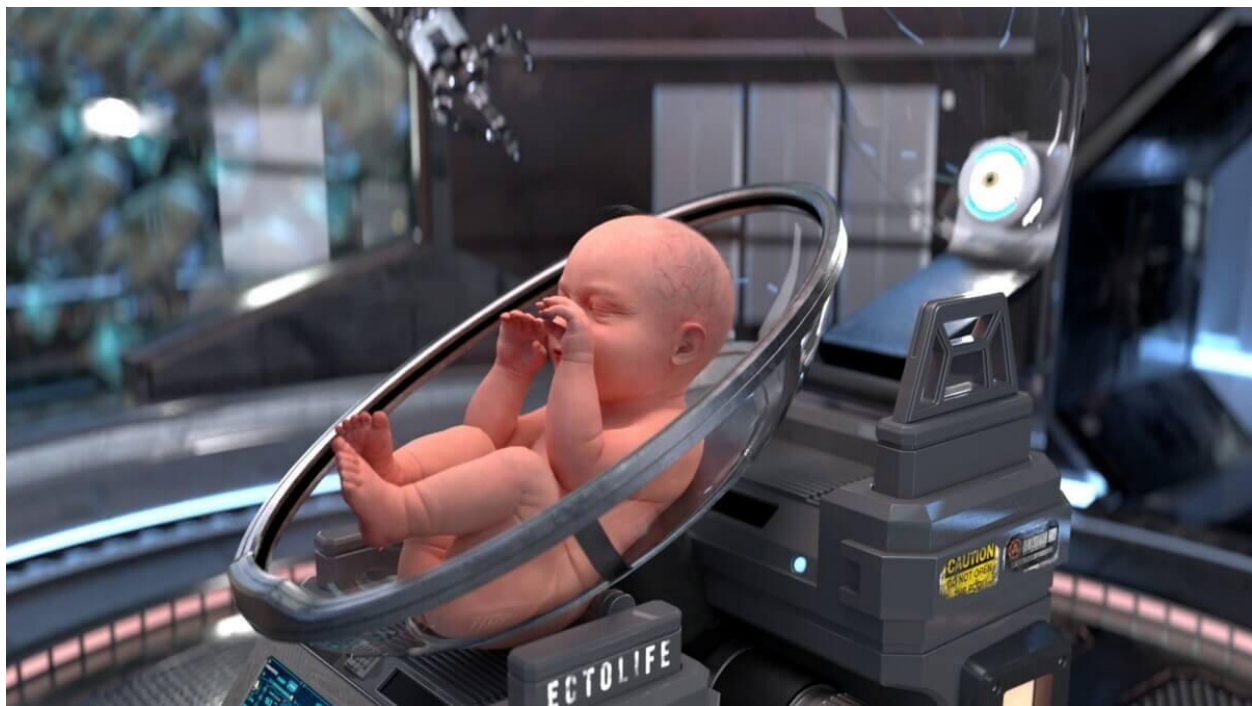
hormone proxies. Safety core runs on formally verified controllers; no black-box autonomy for critical loops.



THE GENETICALLY ENGINEERED HUMAN CLONE FETUS WAS NAMED 'EVE' BY THE GENETIC SCIENTISTS WHO DEVELOPED HER, AND WAS IMMERSSED WITHIN THE ORGANIC CURTAIN FOLDS OF THE WOMB COCOON, IN A BODY TEMPERATURE REGULATED, RICHLY OXYGENATED, LIFE SUSTAINING, SLIGHTLY ALKALINE (Ph-7.25), BIOLOGICAL SOLUTION EMBRYONIC WITH LIQUID CELLULAR NUTRIENTS AND TRACE MINERAL PARTICLES THAT MEASURE LESS THAN 0.007 MICRONS IN SIZE, INCLUDING MYOSTATIN, AMINO ACIDS, METABOLIC ENZYMES, AND MICRO-REFINED SPIRULINA; INSULIN-LIKE GROWTH FACTOR 1 THAT PROMOTES RAPID CELL GROWTH AND REPAIR; MINUTE TRACE PARTICLES PER MILLION OF DEUTERIUM

SULFATE; TRACES OF RESVERATROL, A 'C R ENZYME' THAT BOOSTS METABOLISM AND LIFE EXTENSION; GALANTAMINE, DONEPEZIL, AND RIVASTIGMINE, ESSENTIAL FOR NORMAL BRAIN FUNCTION.

THE EMBRYO OF THE RECREATED EVE CLONE GREW AT A NORMAL RATE AMONG THE FLOWING CURTAIN FOLDS OF GENENGINEERED ORGANIC WOMB TISSUE. COMPUTER-GENERATED IMAGES, AND SOOTHING AMBIENT AND CLASSICAL MUSIC FROM THE TOP AND THE BASE FILLED THE ARTIFICIAL WOMB-LIKE APPARATUS WITH STIMULI, WHILE SHE WAS BOTH NOURISHED AND ASPIRATED BY THE NUTRIENT-RICH EMBRYONIC FLUID.



AFTER 260 DAYS OF GESTATION, THE EVE CLONE WAS BIRTHED AND REMOVED FROM THE EMBRYO TANK FOR THE MATURE PROGRESSION STAGE OF THE 3-YEAR, RAPID CLONING-TO-ADULTHOOD PROCESS.



THE PROGRESSION ROOM

EVE WAS MOVED TO A STERILE DREAM DOME FACILITY AND BROUGHT TO “MATURE GESTATION”; HER GENETICALLY MANIPULATED BODY TRANSFORMED AT A RATE OF TEN YEARS’ WORTH OF AGE PROGRESSION FOR EVERY YEAR OF GESTATIONAL PROCESSING AND REALIZATION, COUPLED WITH A TECHNOLOGICALLY ADVANCED DYNAMIC IMMERSION THETA WAVE EDUCATION AND DEDICATED MEMORY ENGRAM OR MEMGRAM IMPLANTATION PROGRAM.

IF THE BRAIN IS THE SOFTWARE OF THE SOUL, AND THE BODY IS THE HARDWARE, THEN MEMORIES ARE MERELY PATTERNS OF ELECTRO-CHEMICAL STIMULI.

EVE WAS EDUCATED DURING THE DAY IN WHAT IS ESSENTIALLY A MORPHING, DOME-SHAPED ROOM WITH 360-DEGREE ROTATIONAL SPATIAL COGNITION AND PERCEPTION MOBILITY. TECHNOLOGY SIMILAR TO THE

ZOOM® DREAM DOME CYBER TOUR TOTAL IMMERSION SIMULATION SYSTEM.

EVE'S PROGRESSION ROOM IS COVERED OVER ONE MILLION SQUARE YARDS OF HIGH-DEFINITION LCD, MORPHING, FLEXIBLE, HOLLOW TILED FLOOR, AND SURFACE SPACE, WITH FLOOR ACCENTUATORS AND DOME SPATIAL TACTILE MOVEMENT TRACKS, CAPABLE OF SIMULATING VARYING DEGREES OF REALISTIC MOVEMENT, COLOR, SHAPE, TEXTURE, AND FIRMNESS.

THIS TOTAL IMMERSION ROOM IS CAPABLE OF CREATING SEAMLESSLY WITH GREAT DETAIL, A SENSE OF MOVEMENT AND DEPTH IN NEARLY ANY REPRESENTATIVE SHAPE OR ENVIRONMENT, THE PROJECTED COMPUTER-GENERATED IMAGES AND AUDIO SIGNALS OF ANY MEMORY IMPLANT PROGRAM, FROM CHILDHOOD TO ADULTHOOD.

EVE'S ARTIFICIAL MEMORY EDUCATION DURING SLEEP WAS UTILIZING COMPUTER-GENERATED, TRANSCRANIAL HYPNOGOGIC MEMORY ENGRAM PROCESSING WITH A TYPE OF HIGH-DEFINITION, VIRTUAL REALITY, NEURAL NET SKULLCAP, CONNECTED TO A WIDE-FIELD-OF-VIEW GOGGLE MASK AND AUDIO PLUGS, DISPLAYING COMPUTER-GENERATED IMAGERY AND AUDIO DATA DIRECTLY INTO THE BRAIN'S THALAMUS AND NEOCORTEX.

LAYERED MENTAL IMAGERY AND SOUND DATA ARE PROGRAMMED INTO THE CLONED HUMAN TRANSCRANALLY DURING DELTA, ALPHA, AND THETA BRAINWAVE OR D.A.T. DEDICATED MEMORY IMPLANT SESSIONS TO BUILD HER NEURAL NET.

SHORT-TERM MEMORIES ARE STORED IN THE HIPPOCAMPUS, WHERE CHEMICAL CHANGES TO THE DNA OF NEURONS ALTER THE PROTEINS PRODUCED. SIMILAR CHANGES OCCUR IN THE GENES OF NEURONS IN THE CORTEX, WHERE LONG-TERM MEMORIES ARE STORED.

The brain creates multiple copies of a single memory for robust storage. Memories are stored and modified in the hippocampus. The hippocampus is a tiny, complex brain structure that plays an important role in learning, memory, and emotions. Memories of specific experiences are stored in the brain as multiple parallel copies distributed across a minimum of three different clusters of neurons. These clusters emerge at different stages during embryonic development. The copies vary in terms of their duration, modifiability, and susceptibility to deletion over time. These copies vary in their accessibility over time, with early born neurons maintaining long-term memories that become accessible only after some time, while late-born neurons store memories that are strong initially but fade over time. Middle-stage neurons store more stable memories.

The brain preserves and adapts memories to learn from past experiences and for decision-making in specific, changing environments. The activation and timing of memory copies can significantly impact how we recall, modify, and utilize our memories. We must remember what happened in the past to help us make sense of our world. It also needs to adapt to changes happening all around us, and so must our memories, to help us make appropriate choices for our future.

Understanding how past experiences impact decision-making is vital because memories help living beings learn from the past and adapt to changing circumstances, thus influencing future decisions and behavior. How dynamically memories are stored in the brain is an example of the brain's plasticity, which underpins its enormous memory capacity. This flexibility in memory storage explains how

our brain can adapt memories over time, helping us learn from new experiences while still holding on to important long-term memories.

There is a universal pattern of brain waves in multiple primate species, including humans. This pattern of electrical activity is seen in the six layers of tissue that cover the outside of mammals' brains, known as the cerebral cortex. In primates, higher-frequency waves of electrical activity dance through the most superficial layers while slower waves bubble in layers below.

The distinct activity patterns reflect how the brain consciously switches focus from one piece of information to the next. The slower brain waves in deeper portions of the cortex act as gatekeepers, dictating which bits of information enter and remain in conscious thought. The fast waves, which reflect those conscious thoughts, are called gamma rhythms and range between 50 and 150 hertz. The slow waves, meanwhile, are called alpha-beta rhythms and run about 10 to 30 hertz. Information coming in is represented by gamma wave bursts and spikes. There is another mechanism to turn it off. The alpha-beta waves' job is to yank one thought off to let another on.

This mechanism works in some parts of the cerebral cortex. The pattern consistently registers in more than 10 different regions of the cortex. It's not just present in one area or another, but it's present throughout. It appears in three different primates: macaques (*Macaca*), marmosets (*Callithrix jacchus*), and humans. A universal pattern of brain activity shows up throughout the cortex and between species.

D.A.T. MIND SCAN PROCESSING COULD ONLY BE CONDUCTED WHILE EVE WAS UNCONSCIOUS. EACH NEURAL PROCESSING IS UNIQUE. TECHNICIANS DISCOVERED THAT PLAYING SPECIFIC BRAHMS SOUNDSCAPES ENHANCED HER NEURAL FORMATIONS, WHILE SHE WAS PLACED IN A 12-HOUR STATE OF INDUCED SLEEP BY PROGRESSION ROOM TECHNICIANS EVERY NIGHT AND PROCESSED WITH MRIDERIVED MEMGRAM EQUIPMENT.

AS EVE GREW AND AGED, THE ENVIRONMENT OF THE PROGRESSION ROOM WAS ALTERED DURING DAYTIME PHYSICAL EXPERIENCE ENGRAM PROCESSING, TO GIVE HER NEW LIFE EXPERIENCES THAT WOULD COINCIDE WITH HER NIGHTLY MEMORY PROCESSION SESSIONS AND ACCELERATED PHYSIOLOGICAL MENTAL MATURATION. AS AND SHE AWAKENED EACH NEW DAY, SHE WOULD ASSIMILATE AND APPLY A MASS OF NEW INFORMATION AND PURE KNOWLEDGE.

EVE WAS NURTURED DURING THE DAYTIME PROGRESSION ROOM REALITY EXPERIENCE SESSIONS AND NIGHT-TIME DEDICATED MEMORY PROGRAMMING BY STAFF OF NURSES AND DEVELOPMENTAL PRACTITIONERS POSING AS SURROGATE PARENTS, TEACHERS, AND AGE-APPROPRIATE PEER FIGURES. SHE WAS CONDITIONED TO HER NEW REALITY IN HIGHLY CALCULATED, PRECISE, MEDICALLY MONITORED STAGES.

FOR NEARLY THREE YEARS, EVE PHYSICALLY MATURED, AGING 2 MONTHS EVERY WEEK, FOR 156 CONSECUTIVE WEEKS, OR 10 YEARS FOR EVERY CALENDAR YEAR OF MATURE GESTATION BIOLOGICAL PROCESS. HER GROWTH AND MATURATION WERE ENGINEERED BY THE GENESIS CONSORTIUM TECHNICIANS AND BIOLOGICAL SPECIALISTS; ADJUSTED, REGULATED, AND MONITORED TWENTY-FOUR HOURS A DAY, FOR 36 MONTHS.

EVE'S ENVIRONMENT WAS ASPIRATED WITH PROVIGIL DURING MIND IMPLANT AND 12-HOUR SLEEP-INDUCED EDUCATION SESSIONS ADMINISTERED BY TECHNICIANS OVER THE THREE YEARS, TO KEEP HER ALERT TO DATA TRANSFERAL. SHE WAS ALSO GIVEN PHOSPHATIDYLSERINE, A NEUROGENERATIVE, AND MINUTE DOSES OF PROPANOL, A BETA BLOCKER, TO REDUCE HER TRAUMATIC REACTION TO THE SLIGHTLY LESS THAN PERFECT, ARTIFICIAL PROGRESSION ROOM REALITY SHE IS EXPOSED TO DAILY.

THE TECHNICIAN'S REPORT BASED ON HER NEUROLOGICAL BRAINWAVE ACTIVITY WHILE IN COMPLETE REM SLEEP, EVE WAS ABLE TO DREAM. AT PRESENT, THE COMPUTER ARCHITECTURE TECHNOLOGY TO RECORD DREAMS IS LIMITED, AND YET TO BE PERFECTED.

THE CLONE MATURATION PROCESS BY ADVANCED PROGRESSION ROOM DEDICATED MEMORY IMPLANT NEUROPHYSICS TECHNOLOGY, ADMINISTERED WHILE THE EVE CLONE WAS UNCONSCIOUS, IS RUMORED TO BE OF EXTRATERRESTRIAL ORIGIN.

EVE WAS GIVEN A 'FLUID INTELLECTUAL CAPACITY' SPECIFIED BY DR. PARKS:

- A DOCTORATE LEVEL OF INTELLIGENCE IN GENERAL SCIENCE, ENGINEERING, MATHEMATICS, AND MULTIPLE LANGUAGES.
- SUPERIOR ATHLETIC ABILITY AND COORDINATION, OR ATHLETIC INTELLIGENCE.
- CRITICAL HUMANITY-MINDED COMPASSION, CIVIC SOCIAL SENSIBILITIES, AND FAIRMINDED PROGRESSIVE POLITICAL SENSIBILITIES INTELLIGENCE.
- AN ENHANCED ARTISTIC ABILITY OR AESTHETIC INTELLIGENCE.
- AN EASTERN PHILOSOPHY INFLUENCED SPIRITUAL INTELLIGENCE.

EVE IS A TRANSGENETIC METAHUMAN; A PERFECT, MENTALLY AND PHYSICALLY SUPERIOR HUMAN COMPOSITE. SHE IS ALSO AN ALLURING SEDUCTRESS, AN EROTIC CHAMELEON, AND MORE.

EVE'S PHYSICAL AGING PROCESS WAS REVERSED TO A NEAR FULL STOP BY MANIPULATING THE GENES THAT PROMOTE AGING, AND BEFORE CONCEPTION, BY SATURATING HER EMBRYONIC CELLS WITH TELOMERASE ENZYMES, TO ADD MANY MORE TELOMERES, OR TIGHTLY COILED THREADS OF DNA THAT FORM A PROTECTIVE CAP ON THE ENDS OF EACH OF OUR CHROMOSOMES.

THESE TELOMERES SHORTEN EACH TIME A CELL DIVIDES UNTIL THE CELL CAN NOT DIVIDE ANYMORE; THEN OUR BODIES START TO DECLINE. EVE'S CHROMOSOMES HAVE BEEN MODIFIED TO HAVE ONE THOUSAND TIMES THE NORMAL NUMBER OF TELOMERES AT EACH END, SO WITH HEALTHY LIVING HABITS AND PROPER NUTRITION, SHE MAY LIVE INDEFINITELY AND AGE MUCH SLOWER PHYSICALLY.

IT WAS ESTIMATED THAT SHE WILL AGE AT LESS THAN ONE-QUARTER OF THE NORMAL HUMAN RATE. HER LIFE SPAN IS PREDICTED TO BE ANYWHERE FROM 800 TO 1000 YEARS, PERHAPS MORE.

IN ADDITION TO ADDED IMMORTAL TELOMERES, EVE ALSO HAS EXTRA CHROMOSOMES GENETICALLY ENGINEERED INTO HER SUPERIOR DNA.

EVE'S THREE-YEAR ADULT MATURATION WAS THE MOST SOPHISTICATED BIOGENETIC NEUROSCIENTIFIC PROCESS OF THE MIDTWENTY-FIRST CENTURY.

SHE WAS THE LAST OF 144, ONE BILLION DOLLAR CLONES CREATED FOR AN ELITE CLIENTELE, THE WEALTHIEST, MOST POWERFUL MEN AND WOMEN, ON EARTH.

THE EVE CLONE, ALTHOUGH UNIQUE, WAS CREATED NOT ONLY TO THE SPECIFICATIONS OF THE PRIVATE CLIENTELE BUT ALSO TO THE GENESIS CONSORTIUM. UNBEKNOWNST TO THEIR CLIENTS, EACH OF THE 144 ONEBILLION-DOLLAR CLONES HAS AN UNKNOWN MISSION, WET-WIRED INTO THEIR SUBCONSCIOUS. IT IS TO OUTLIVE THEIR HUSBAND OR

COMPANION, PROCREATE, AND INHERIT THE WEALTH OF THEIR CLIENT FAMILY, FOR THE GENESIS CONSORTIUM.

IN PLACE OF A VERICHIP, OR RADIO FREQUENCY IDENTIFICATION GPS CHIP EMBEDDED INTO THE CUSTOM CLONES, WHICH CAN BE EASILY DETECTED AND REMOVED, REDUNDANT DNA CHROMOSOMES STRANDS WERE USED IN PLACE OF A CONVENTIONAL MICRO RFID TAG, SERVING A DUAL PURPOSE. THE EXTRA ADDED SPLICED CHROMOSOMES FUNCTION AS A DNA HOMING BEACON, AND A TELEPATHIC COMMUNICATIONS SUBLIMINAL SUGGESTIVE CONTROL VOICE MECHANISM; INSIDE AND THEIR CONSCIOUSNESS MAY NOT ALWAYS BE THE VOICE OF REASON, BUT THE COMMANDS OF THEIR TRUE MASTER.

THE GENESIS CONSORTIUM CLONES ARE SLEEPER OPERATIVES; PROGRAMMED TO EXECUTE THE SECRET DIRECTIVES OF THE CONSORTIUM ORDER, TO USURP THE WEALTH AND POWER OF THEIR INFLUENTIAL GLOBAL CLIENTS, TO FUND THE CONSORTIUM IN PERPETUITY. THE GENESIS CLONES WERE ALSO PROGRAMMED TO KILL ON COMMAND.

A TRIGGERED SLEEPER CELL RESPONSE CAN BE ACTIVATED IN THE COMPOSITE CLONE'S QUANTUM BRAIN THROUGH THE EXTRA CHROMOSOMES BY A BIO-INTERFACE COMPUTER, TURNING THEM INTO INSIDE COUP DE GRACE ASSASSINS IN AN INSTANT, AT THE DISCRETION OF THE CONSORTIUM ORDER.

EVE IS ALSO THE MOST LETHAL AND TALENTED ASSASSIN CLONE THE GENESIS CONSORTIUM HAS EVER CREATED. WITH THE DEDICATED MENTAL AND PHYSICAL SKILLS OF A MASTER YOGI, GYMNAST, ESCAPE ARTIST, EXPERT MARKSMAN, AND LETHAL MARTIAL ARTIST, SHE IS PROGRAMMED AT A MASTERY LEVEL IN MANY MARTIAL ARTS FORMS, INCLUDING THAI KICKBOXING, KRAV MAGA, BRAZILIAN JIU JITSU, AIKIDO, TAIHEN JITSU, SHUDOKAN AND KEN PO, EVEN THE CENTERING RELAXATION ARTS TAI CHI AND QI GONG.

THE EVE CLONE PROTOTYPE IS A PURE OFFENSIVE DESTROYER.

EVE'S IMMUNE SYSTEM IS NEARLY IMPERVIOUS TO DISEASE; HER METABOLISM IS EXTREMELY HIGH BUT STABLE. EVE IS A VEGAN.

SHE CAN, ACCORDING TO THE CLAIMS OF THE GENESIS CONSORTIUM, BEAR CHILDREN WITH NO ABNORMALITIES, AND PASS ON HER SUPERIOR TRANSGENETIC TRAITS TO HER PROGENY. AND, IF TWO OF THESE DESIGNER CLONE COMPANIONS WERE TO CONCEIVE, AUTHORITIES FEAR THEY WOULD USHER IN A NEW GENERATION OF NEARLY IMMORTAL METAHUMAN BEINGS.

HER 'AWAKENING' IS A PROCESS BY WHICH EVE WAS SLOWLY BROUGHT OUT OF HER FINAL DEDICATED MEMORY ENGRAM PROCESSING PROGRAM SEDATION. THE COMPANION'S CLIENT IS THE ONLY ONE ALLOWED TO BE PRESENT AT THIS PROCEDURE, AS A PART OF HER IDENTITY ASSIMILATION PROCESS.

SHE WAS GIVEN THE FINAL IMPLANT MEMORY OF BEING IN SINGAPORE, RECOVERING AT A PRIVATE LUXURY MEDICAL SPA, AND RECOVERING FROM A MISCARRIAGE. EVE'S IMPLANTED MEMORY PROGRAMMING HAD HER UNDER THE IMPRESSION THAT THEY HAD BEEN MARRIED FOR A YEAR BEFORE HER 'AWAKENING' OR ASSIMILATION INTO HER CLIENT'S LIFE.

EVE WAS GIVEN THE MANUFACTURED MEMORY OF A STILL RELATIVELY NEW MAY / DECEMBER RELATIONSHIP AND MARRIAGE TO AN OLDER, ULTRA WEALTHY AEROSPACE INDUSTRIALIST, HER SECRET CLIENT.

HER CLIENT COULDN'T BELIEVE HOW MUCH SHE LOOKED EXACTLY LIKE EVE DUMONT, HIS OLD LOVE WHO WAS TRAGICALLY LOST IN AN ACCIDENT MANY DECADES AGO. THERE WAS A PHYSICAL CONSUMMATION OF THE UNION, WHICH WAS INITIATED BY THE EVE CLONE, BY DESIGN, A NECESSITY TO REINFORCE EVE'S BONDING RESPONSES.

THE EVE CLONE WAS GIVEN THE MANUFACTURED REALITY OF BEING THE OWNER OF HIGH-END LONDON AND NEW YORK ART GALLERIES. HER EMPLOYEES AND SOME OF HER CLIENTS ARE HIRED OPERATIVES WORKING FOR THE GENESIS CONSORTIUM; THEY MONITOR HER DAY-TO-DAY PROGRESS AND ACTIVITIES. EVE WAS ALLOWED MORE UNMONITORED FREEDOM AFTER ONE YEAR OF ASSIMILATION INTO HER IDENTITY AND MANUFACTURED REALITY.