

EXO

EXECUTIVE OFFICER

EDO SUIT ORIGINS



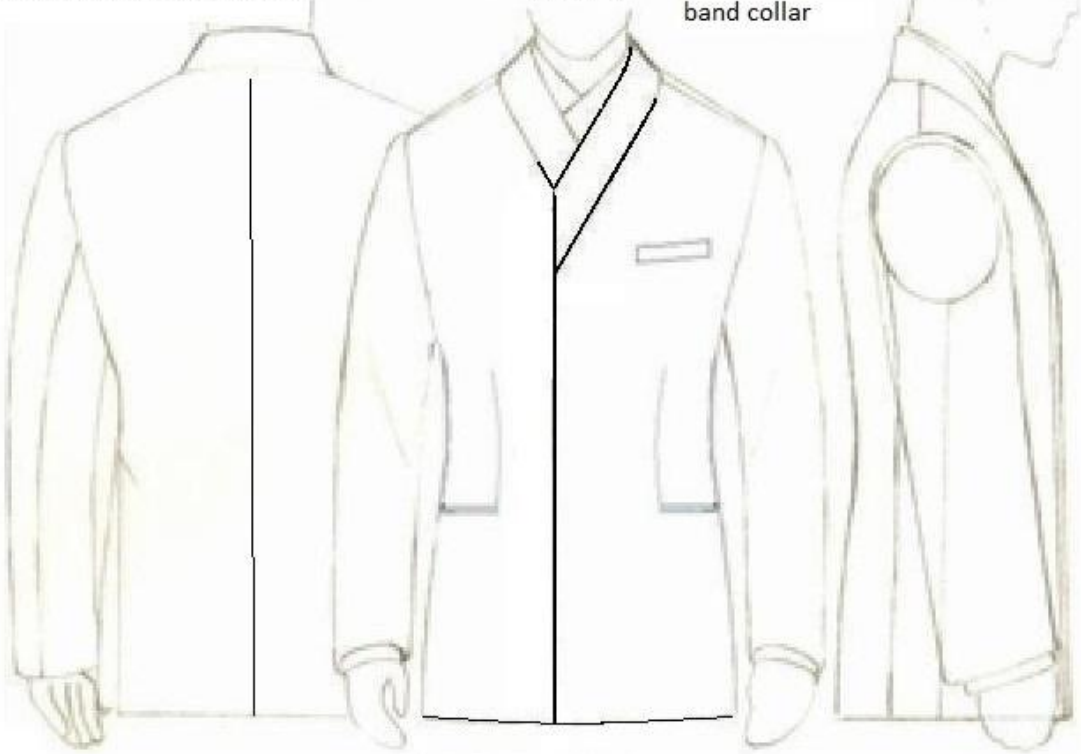
WARRIOR PRIEST

# Edo Couture Single Breasted Suit (Sebiro)

In Linen and Seasonal Wools

*EDO SUIT  
COUTURE*

Thick interfaced  
band collar



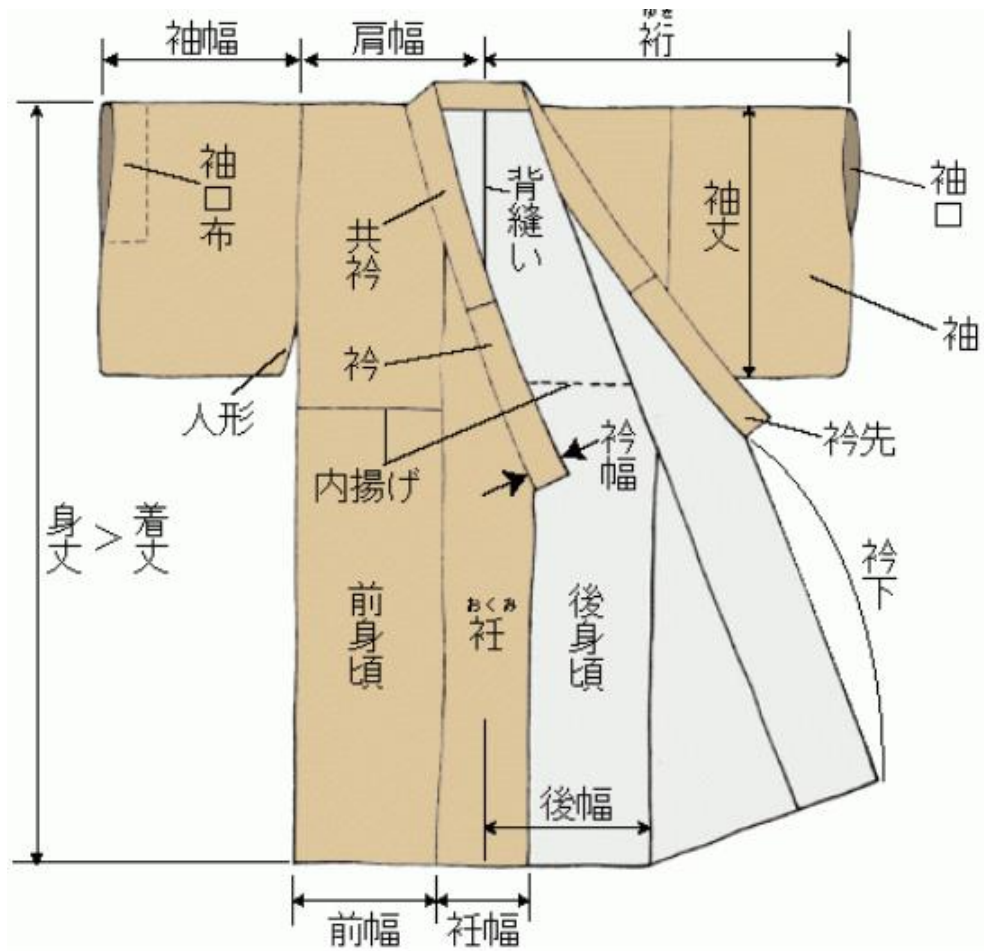
**READY TO WEAR LINE**

*EDO SUIT JACKET*

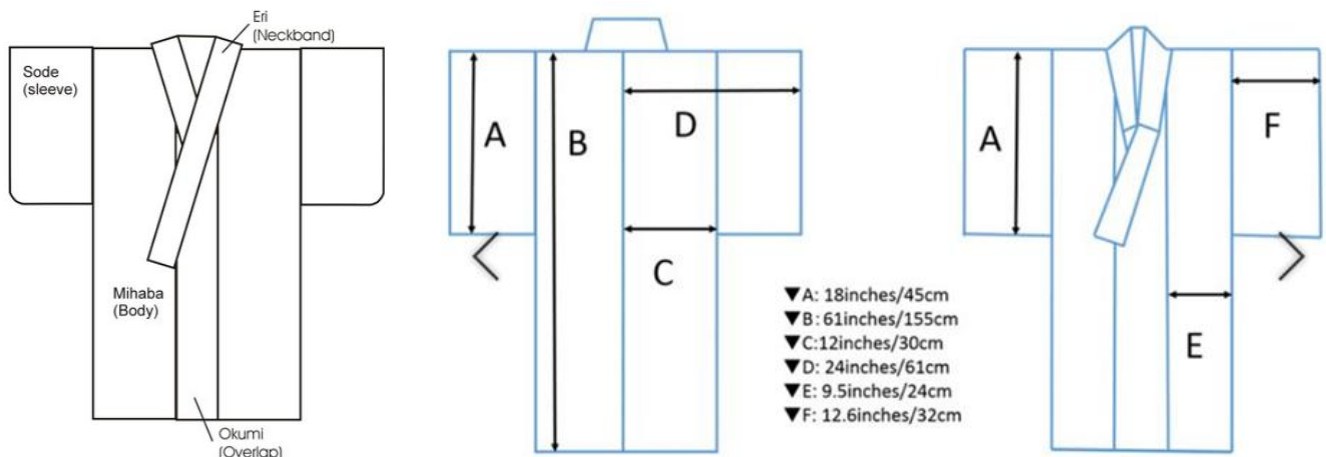


**TAILORED KIMONO-NECK CLOSURE SUITS**





The kimono-neck closure influence in menswear design is everywhere...



## OM\*EXO Executive Wardrobe Lines:

The OM Executive Collection begins with fundamental custom-made-to-measure, refined hand-sewn bespoke wardrobe components that every executive should own. The collection is inspired by Gorgio Armani, Nino Cerruti, Ralph Lauren, Alan Flusser, Japanese kimono-influenced design, and classic WWII U.S. Military Officers Uniform design.

We begin each custom garment with the OM Digital Tailor. The Client's measurements are gathered using a complimentary digital tailoring service, DTS, which uses a computerized, full-body scanner to map your size and measurements in seconds, ensuring a customized wardrobe.

The OM\*EXO Line of Executive Clothing for Men offers classic and modern custom relaxed silhouette hand-sewn suits and separates in seasonal wools and linen, in black, indigo, navy, dark olive, dark brown, gunmetal gray, and charcoal gray. Two pairs of lined trousers are included with each suit, either plain or cuff hemmed, or one of each. Jacket sleeves, armholes, and banker's shoulders are cut for comfort.

Trousers are comfortable, double pleated, draped relaxed leg cut.

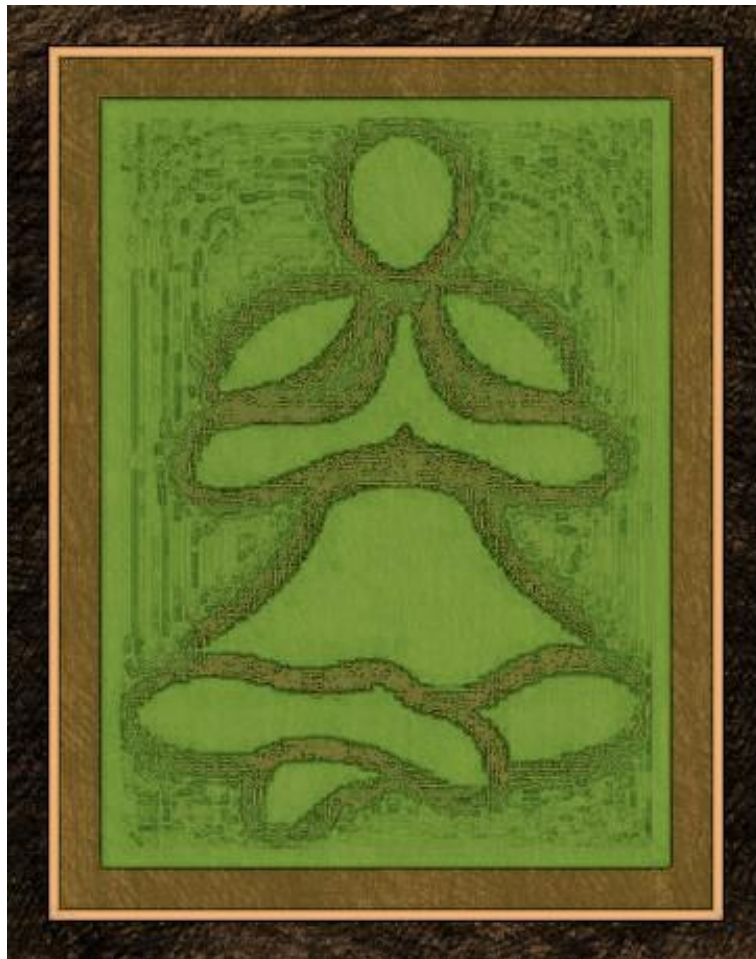
EXO Edo Line: Edo period three-button hidden placket closure Edo cross-collar band jacket, with a two- and one-half-inch wide Eri band collar, in wool or linen fabrics; double vented (40-50 reg-xxlg 34-46). The Edo suit jacket fits like a three-button conventional suit jacket but with a Tomoeri band collar; it's a kimono-influenced design—the 'Warrior Priest' look.

The ensemble comes with two hakama-inspired dress trousers and two Sugata cross-collarless Edo dress shirts. The ensemble also includes a Tomoeri band collar, knee-length Haori-inspired outer coat, a sleeveless seasonal oversized thigh length Haori inspired outerwear vest with oversized shoulders of similar fabric (in black color only), and an Edo collar overcoat in waxed cotton canvas, Gore-Tex, or cashmere (in black color only).

OM\*EXO Car Coats, Long Coats, and Trench Coats: Vintage WWII U.S. Military Officer inspired, offered in linen, wool, corduroy, cashmere, Gore-Tex, faux leather, and faux suede. E-tailored with extra compartments for mobile devices. (M 40-50 reg-xxlg, W 2-12)

OM Design Authentic Outerwear Jackets: Modern interpretations of vintage WWII U.S. military-inspired MA-1 Flight Jackets, Field jackets, and Parkas, vintage WWII U.S. Military Officer inspired Casual Jackets, knee-length and ankle-length Long Coats, and all-season OM Outerwear Jackets and Vests, in Gore-Tex, wool, denim, corduroy, faux leather, and suede. E-tailored with extra compartments for mobile devices (M 40-50 reg-xxlg).

OM Design Accessories include Urban Wear boots, shoes, collapsible travel smocks, belts, custom stainless steel classic timepieces, optics, and signature fragrances, completing the foundation of the OM Clothing Collection.



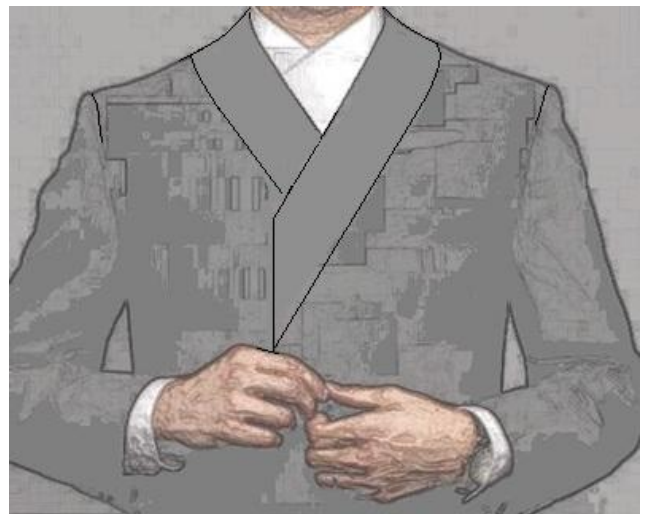


# EDO DESIGN SUITS

WARRIOR PRIEST



Smaller width Tomoeri



Traditional Tomoeri



# Edo Couture Single Breasted Suit (Sebiro)

In Linen and Seasonal Wools

*EDO SUIT  
COUTURE*

Thick interfaced  
band collar



**READY TO WEAR LINE**

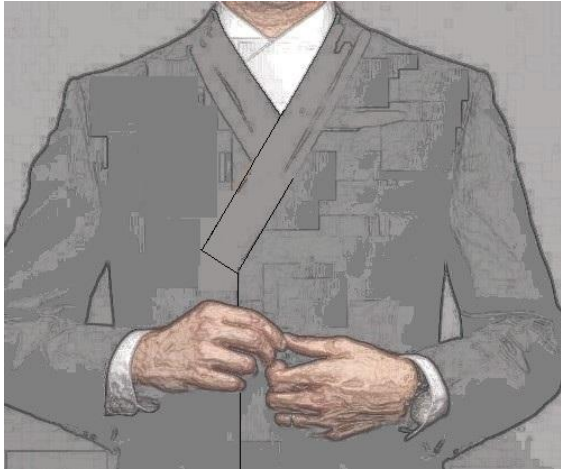
*EDO SUIT JACKET*



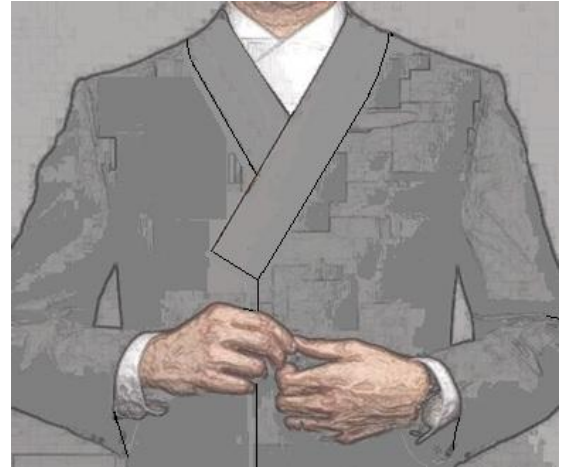
**TAILORED KIMONO-NECK CLOSURE SUITS**



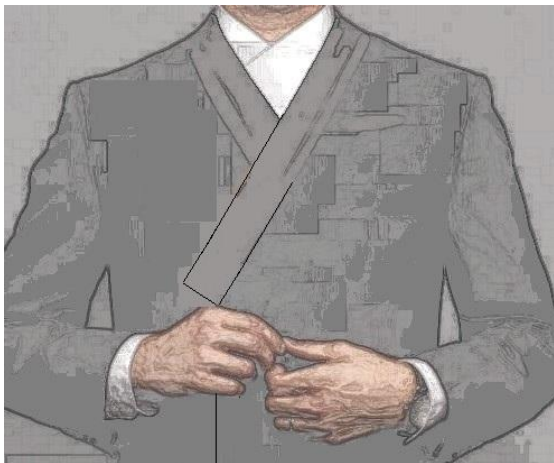




Smaller width Tomoeri



Traditional Tomoeri



Smaller width Tomoeri



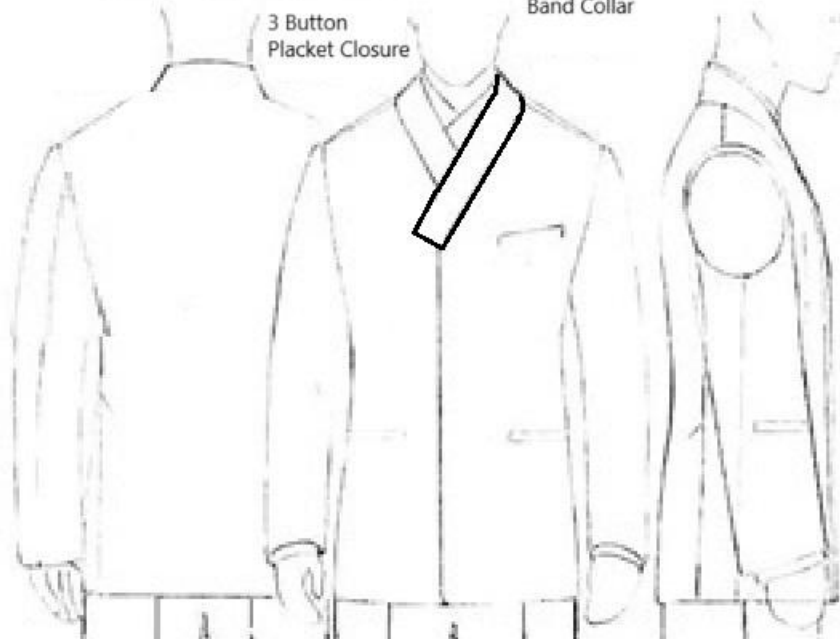
Traditional Tomoeri

Edo Single Breasted Suit and Tux

In Linen and Seasonal Wools

3 Button  
Placket Closure

Thick Interfaced  
Band Collar

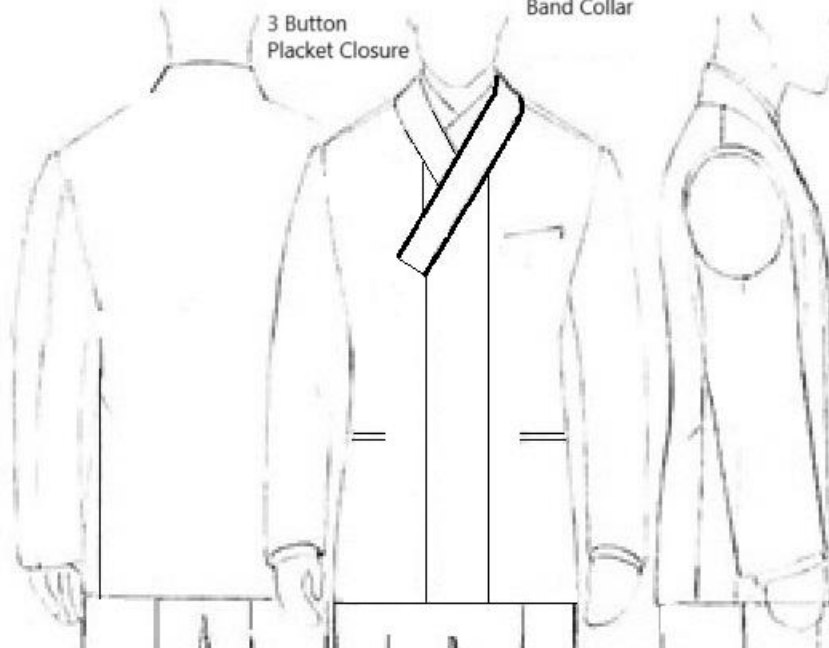


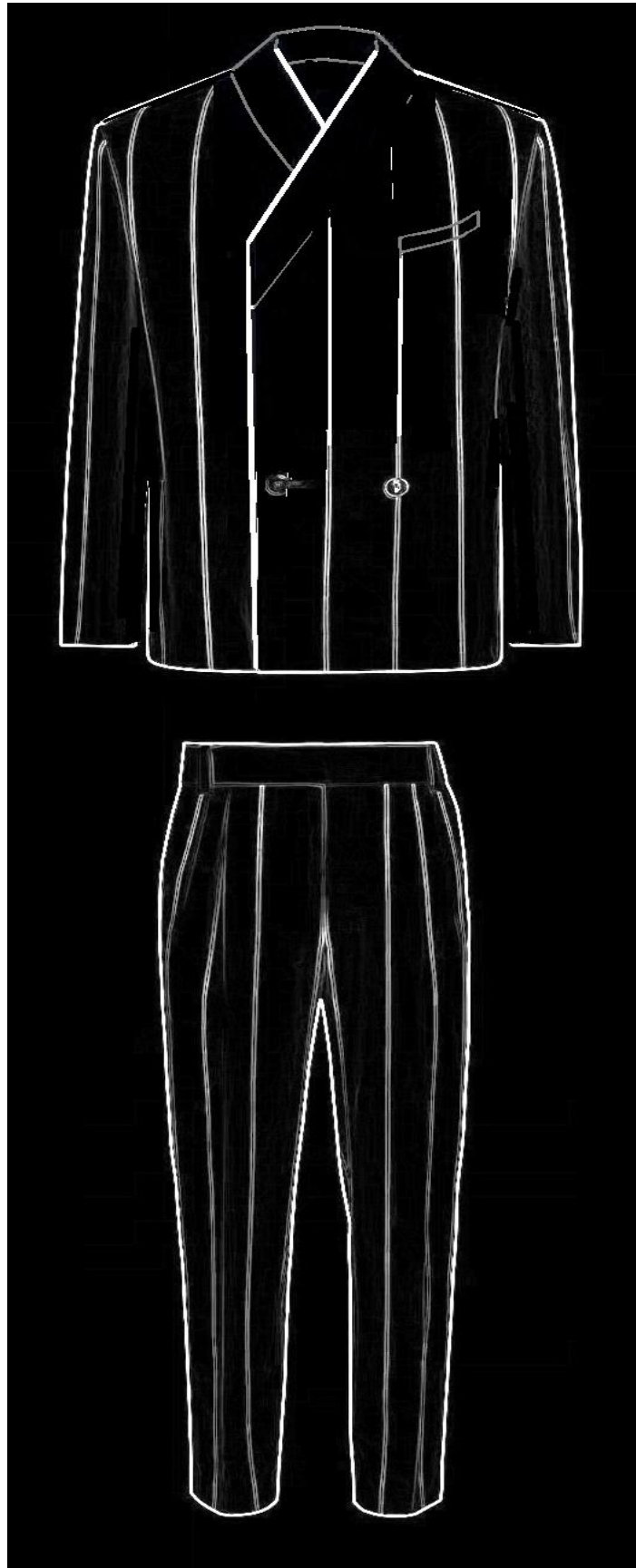
Edo Double Breasted Suit and Tux

In Linen and Seasonal Wools

3 Button  
Placket Closure

Thick Interfaced  
Band Collar





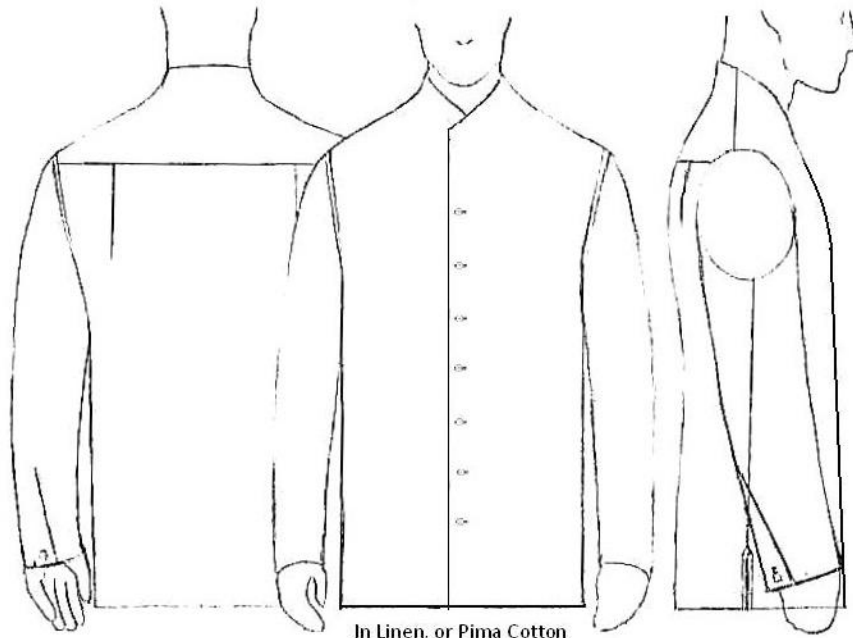






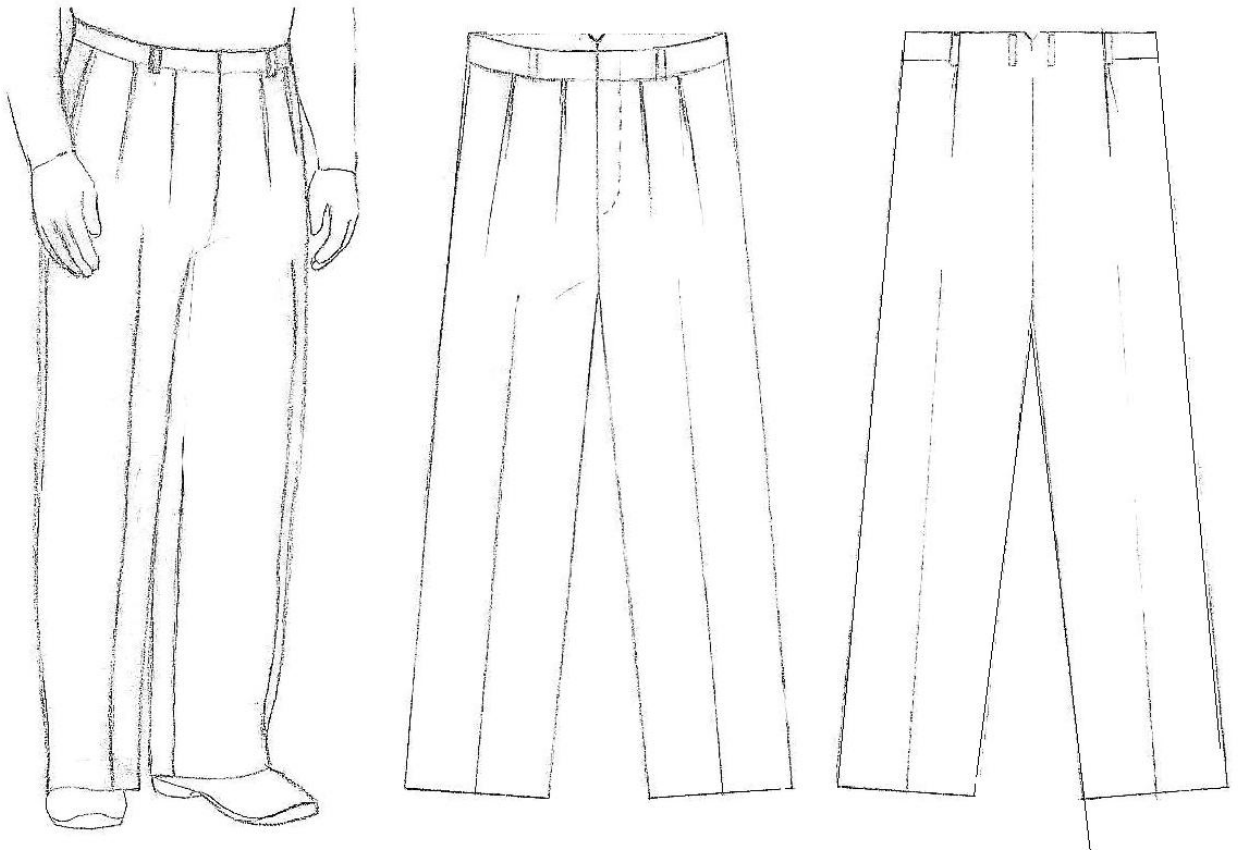


Sugata Dress Shirt



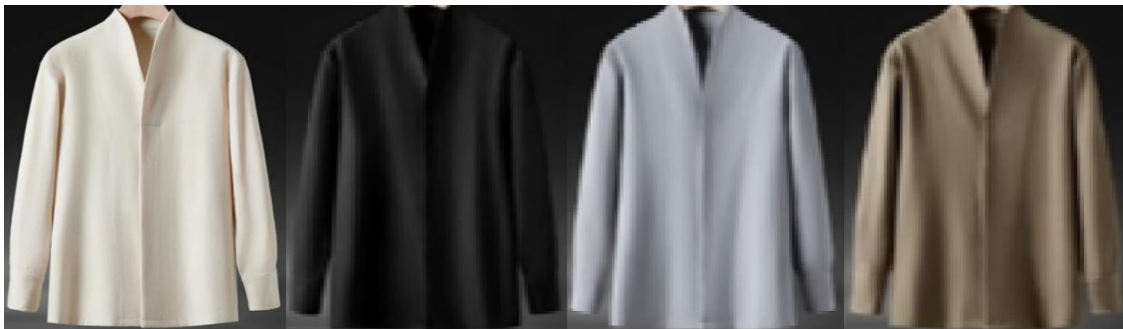
In Linen, or Pima Cotton

Hakama Dress Trouser  
In Linen and Seasonal Wools





HAKAMA  
DRESS  
TROUSER  
IN  
LINEN  
&  
SEASONAL  
WOOLS





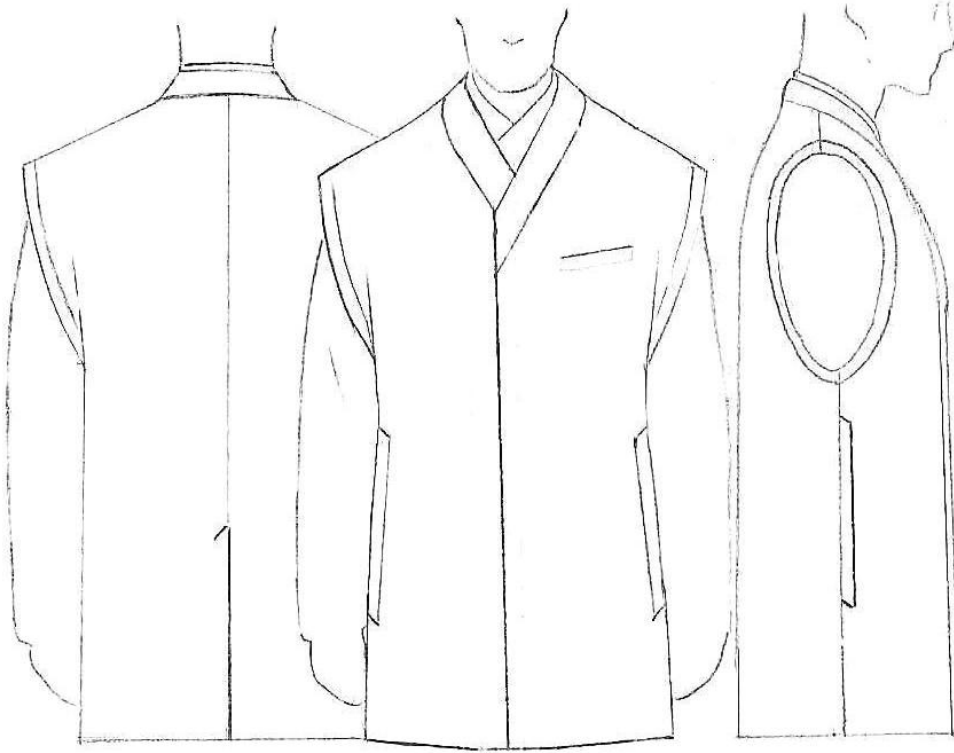




## HAORI JACKETS

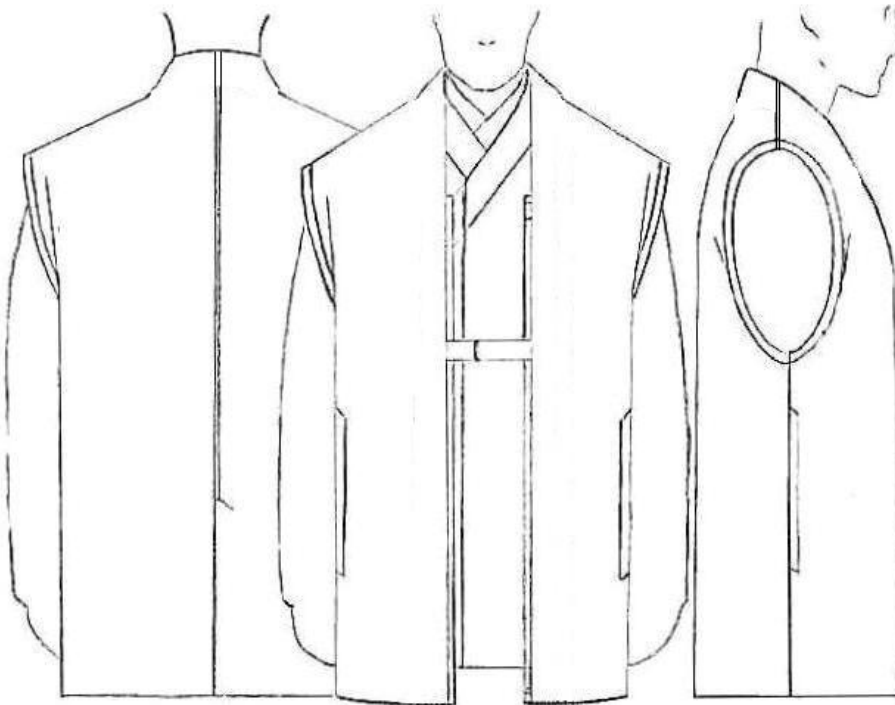
IN  
LINEN,  
SEASONAL  
WOOLS &  
GORETEX

**Edo Outer Vest**



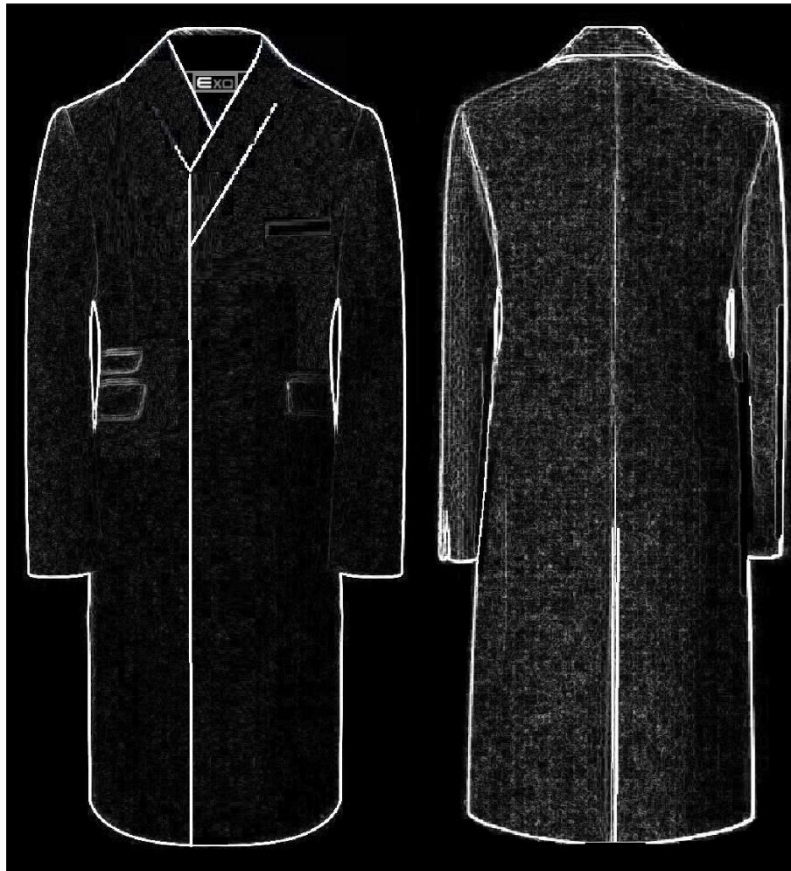
In Canvass, Gortex,  
Cashmere, in Black, Charcoal,  
Navy, Coffee Brown, Gray,  
Camel and Loden; or in  
soft Leather in Black,  
Coffee Brown or Saddle Tan

**Haori Outer Vest / Jacket**

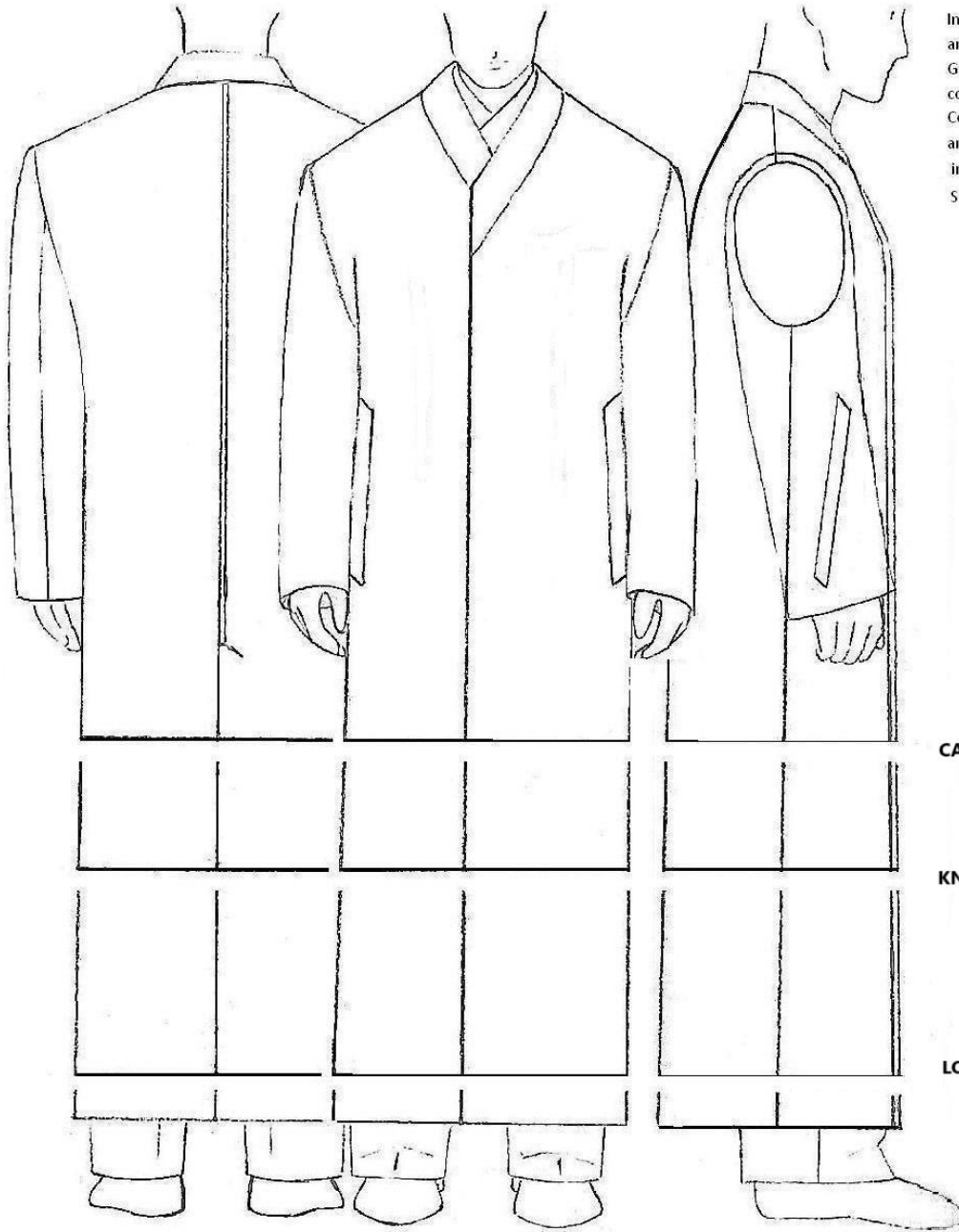


Zip out sleeves and double  
zippered closure

In Linen, Seasonal Wools,  
Cashmere, Gortex, or in  
Black only or in soft  
Leather in Black, Coffee  
Brown or Saddle Tan



Edo Coat (Oba)



In Car coat, knee, calf, and ankle lengths; in Canvass, Gortex, or Cashmere; in colors: Black, Charcoal, Navy, Coffee Brown, Gray, Camel, and Loden ; or in soft Leather in Black, Coffee Brown or Saddle Tan

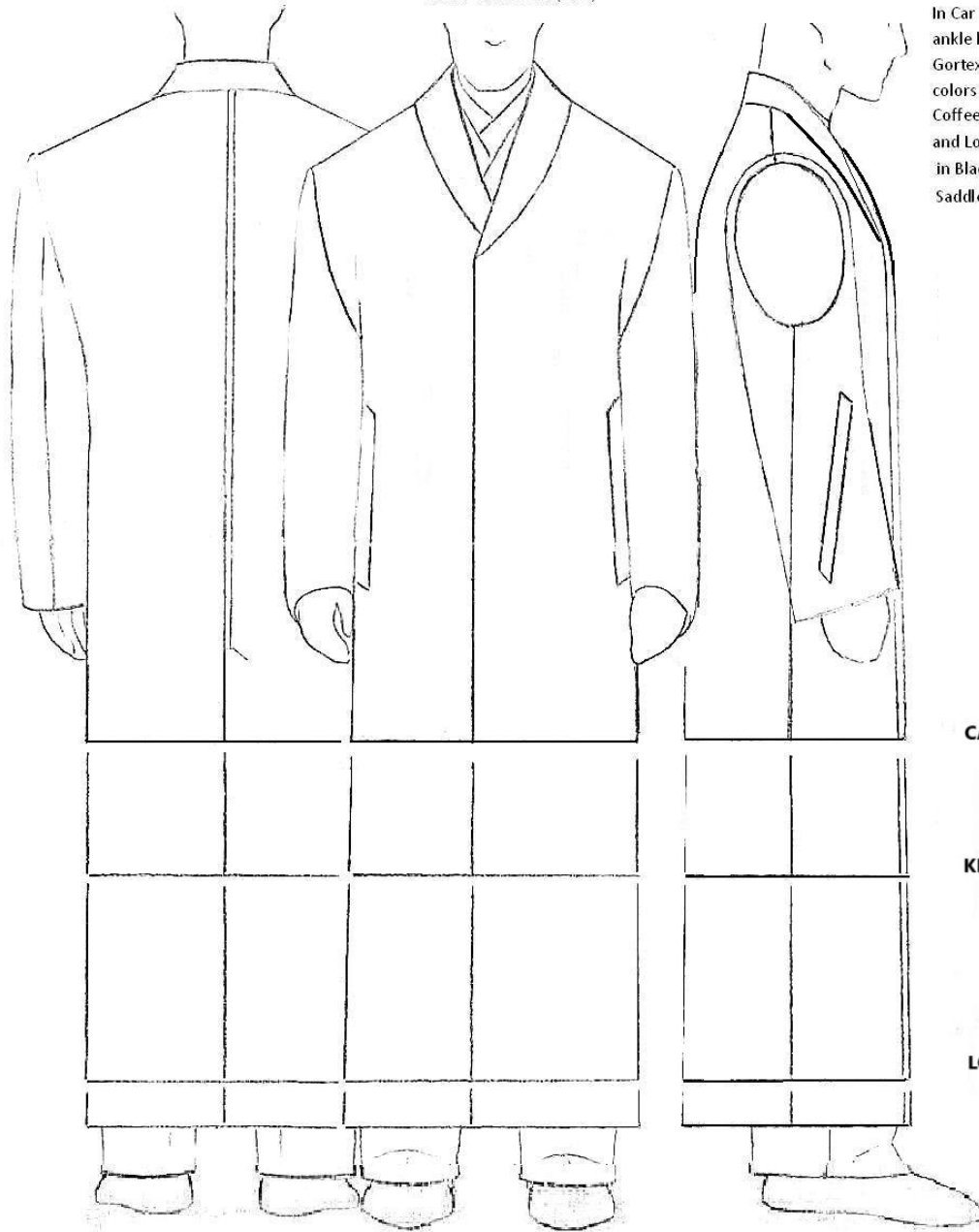
CAR COAT

KNEE LENGTH

LONG COAT



Shawl Collar Coat (Oba)



In Car coat, knee, calf, and ankle lengths; in Canvass, Gortex, or Cashmere; in colors: Black, Charcoal, Navy, Coffee Brown, Gray, Camel, and Loden; or in soft Leather in Black, Coffee Brown or Saddle Tan

**CAR COAT**

**KNEE LENGTH**

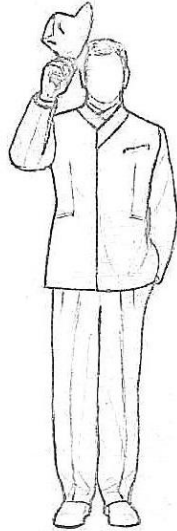
**LONG COAT**

**Travel Hats**

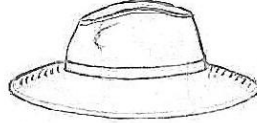
Sizes: M-L (7-7 7/8), and XL-2XL (7 1/2-7 7/8)

Cap Colors: Black, Charcoal, Navy, Coffee Brown, Gray, Camel, Indigo

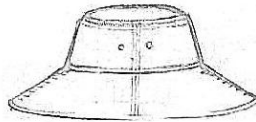
Hat Colors: Black, Charcoal, Coffee Brown, Gray, Indigo



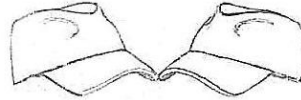
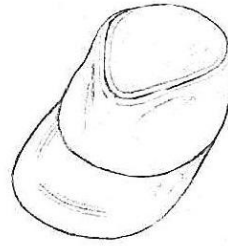
Fedora: 24-oz. Wool Felt, 6-oz. or 8-oz. Cotton, or soft Leather



Safari: ventilated Mesh side material with 6-oz. Cotton Crown and Brim



All-weather Booney: 6-oz. or 8-oz. waxed Cotton, or ventilated Mesh side material with 6-oz. Cotton Crown and Brim



Fedora-style Cap: 6-oz. or 8-oz. Cotton, or ventilated Mesh side material with 6-oz. Cotton Crown and Brim, or 24-oz. Wool Felt, or soft Leather





