

Proposal Model Propulsion System suitable for Unidentified Flying Objects for Future Space Travel

Jisuhn Mohan*, Bibin Thomas

Department of Aeronautical Engineering, Rajadhani Institute of Engineering and Technology, Attingal – 695102, India.

*Corresponding author email: jishnumohan12@gmail.com, Tel.: +91 8281937596

ABSTRACT

The Unidentified flying objects remains a mystery to the whole globe since no clear evidence is there to prove their existence. Though we still believe that, we are not only the ones who lives here and there are others, who are more capable than us which are very well understood by reports giving information about their invasion of Earth. They are supposed to be exhibiting an antigravitational mode of the propulsion system. Here it is dealing with the UFO propulsion system based on Gravitomagnetism, how plasma seems to be the future fuel for us, the steps involved in plasma generation and how it leads to antigravity. Study for significance and characteristic behavior of plasma sheath in advanced physics is carried out.

Keywords – Antigravity, Gravitomagnetic, Plasma sheath, UFO propulsion.

1. INTRODUCTION

UFO refers to unidentified flying objects. To explain UFOs in terms of physics we understand to some degree, still, it seems essential to assume UFOs are capable of generating artificial gravity fields. UFO behavior as we are accepting the fact that they are using some gravity-like repulsive force-field. The glow/luminescence around the UFO is meant to be due to ionization of surrounding air much like what happens in neon lamps. Studies conducted by experts refer to it as some kind of UFO plasma sheath. These plasma sheaths appear to have a different variant in their luminescence which mark as the extends of acceleration/ thrust generation [1]. Plasmas can interact strongly with electromagnetic radiation. Plasma Stealth is a proposed process that uses ionized gas to reduce the radar cross section (RCS) of an aircraft. This may explain why sometimes UFOs are seen visually, but not tracked on radar. Often UFOs have a very strong magnetic field generated by its own. Plasma plays an important role in acting as a fuel for the UFO model propulsion system. Generation of plasma is a high exothermic process as a large amount of heat is generated while conducting the centrifugal experiment. Another crucial problem faced is that there is no such material to contain the molten plasma for power generation[2][3]. The revolutionary idea of using high intensified magnetic field in the plasma containment torus discussed. How plasma state matter is affected by centrifugal force and its results are also being studied the mode of the propulsion system. Defense Scientists

and Engineers are finally starting to understand the ultimate propulsion system that can make instantaneous space travel possible. The UFOs use this propulsion system to conduct interstellar space travel. They are able to trigger gravity as the mode of propulsion. Also, the significance of commonly adopted disc-like shape is also studied. The propulsion system of UFO is generally referred regarding hypothetical assumptions. Research is being gone on to explore more about these basic conceptual ideas[4].

2.GRAVITY AND GRAVITOMAGNETISM

In order to understand the propulsion systems of the various extraterrestrial spacecraft, it is first necessary to understand what the extraterrestrials have learned about the force of gravity and how it is manifested.

There are four major basic forces that exist in the universe. They are:

- Electromagnetism (EM)
- The Strong Nuclear Force (SNF)
- The Weak Nuclear Force (WNF)
- Gravity (Gr)

All forms of energy or all forces known and unknown to us on earth find their basis in certain combinations of two or more of these forces.

Gravity is the product of the weak nuclear force and electromagnetism. Each and every one of the four basic forces of the universe functions within the confines of the smallest and the largest of atoms. The weak nuclear force residing in any atom has no influence beyond the atomic structure. In fact, it blends with the negative

electromagnetism of the atom's electrons and the positive electromagnetism of the atom's protons. The combined weak nuclear force and electromagnetism are thereafter totally transformed into a gravitational field. When both positive and negative magnetism is present in an atom, the gravitational field is constant as per the atom's mass. Thus, the strength of every atom has a gravitational field that is equal in strength to every other atom. When any number of electrons is taken away from the atom, the WNF existing in the atom's nucleus becomes evident. Because there is not enough electromagnetism existing in the atom to combine with this force and strengthen its gravity. This is the phenomenon of gravitomagnetism, in which both the gravity and electromagnetism are explained as the manifestations of the same thing [5, 6].

Gravitomagnetism often referred to as gravitoelectromagnetism is a phenomenon in which both gravitational and electromagnetic thesis is combined to define the effect of anti-gravity and space-time bending. The concept provides ideas of how the propulsion systems of UFO works. The Extraterrestrials have learned how to extract the WNF from the atoms, then amplify the force by accelerating the ionized atoms in the form of plasma, and then combine the amplified force with electromagnetism to produce an artificial gravitational field. They then pit their artificial gravitational field against a planet's natural gravitational field in a way to cancel out each other. Then the craft uses magnetism to propel itself off the planet's natural magnetic field. The whole process explained is the mode of propulsion adopted for future spacecraft working on the principle of gravitomagnetism [7].

3. PLASMA: FUTURE PROPELLANT

Plasma is the fourth form of matter. More than 70 percent of the universe exists in the plasma state. Plasma is very hot that it cannot be contained in any solid container. So, they are proposed to be contained in the very center of magnetic bottles. Magnetic bottles are nothing but high intensified magnetic waves constrained in the form of a bottle.

3.1 Plasma Generation

The need for plasma is very crucial in adopting UFO model propulsion system. The generation of plasma is a highly exothermic process as a large amount of heat will be dissipated. An example for plasma generation can be explained by using deuterium (D_2) as a source.

Consider two glass pellets one containing deuterium or a mixture of deuterium and tritium with mercury (type 1) and the other one containing deuterium and a parabolic mirror (type 2) as shown in Fig.1. These pellets are also called as dragon seeds.

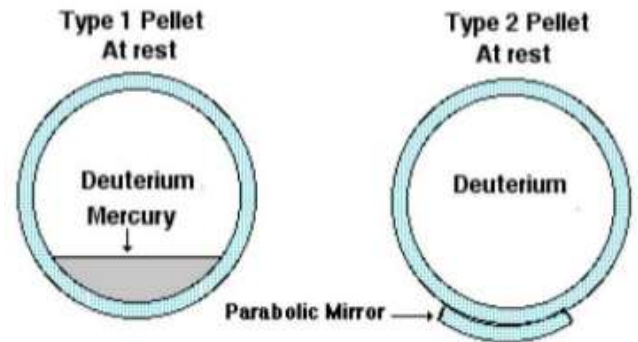


Fig. 1 Types of pellets used in plasma generation process

The glass of these pellets is given a static negative electrical charge and is fired into a containment torus at high velocities with a device similar to that of a rail gun as shown in Fig.2.

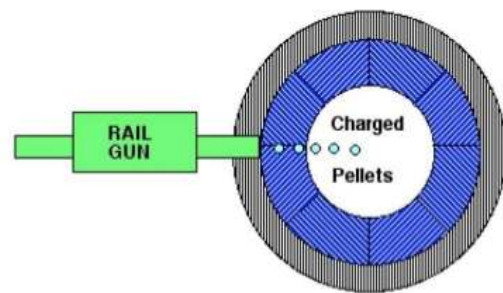


Fig. 2 Rail Gun

The rail gun provides pulses of negative magnetic energy of the same type of charge that is on the glass pellet. These pulses accelerate the pellets faster along the containment torus. Once in the containment torus, the pellets circle the torus again and again. Their circular path is kept centered by electromagnetism produced by the coils wrapped around the torus (Fig.3).

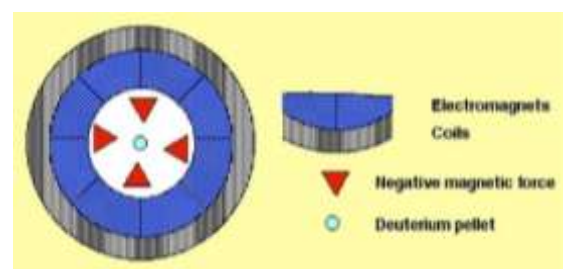


Fig.3 Charged pellet kept centered by magnetism

The pellets circling the torus at high speed are then affected by centrifugal force. Because of this, the heavier part of both the pellets automatically becomes located away from the direct center of the torus. For the type 1 pellets, the mercury crawls up and forms a parabolic reflecting mirror. For type 2 the weight of the external parabolic reflecting mirror orients the pellet to the desired position as shown in Fig.4.

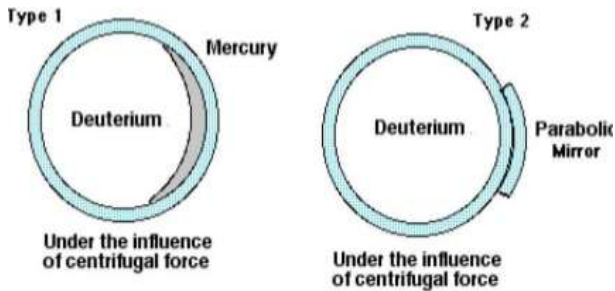


Fig. 4 Orientation change in the pellets due to the influence of centrifugal force.

When the pellets are moving in the torus under the influence of centrifugal force, a concentrated beam of hydrogen or deuterium laser is fired at the pellets which would make the laser light function in some sort resonance with the deuterium in the pellets[8].

As the laser light passes through the wall of the pellets, it initially starts the deuterium to ignite. This is known as the primary ignition phase (Fig.5). The greatest amount of laser light passes through the atoms. This causes the atoms to begin the initial stage of ignition. This then results in the space between the protons and electrons to become smaller and smaller.

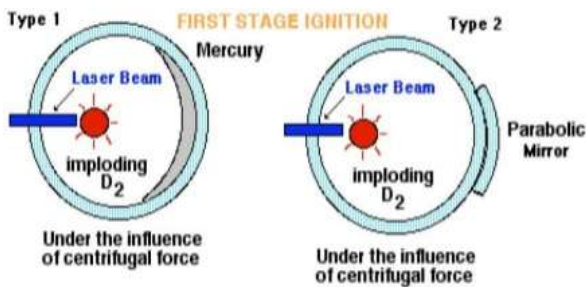


Fig. 5 Primary ignition phase.

The laser energy that passed through the atoms is focused and reflected back into the imploding deuterium. This reflected laser light has more energy in it than the laser light that began the initial ignition. This again decreases the inter nuclear spaces and raises the temperature of the atom astronomically. This marks the secondary ignition stage (Fig.6) that with an increased temperature results in the formation of plasma.

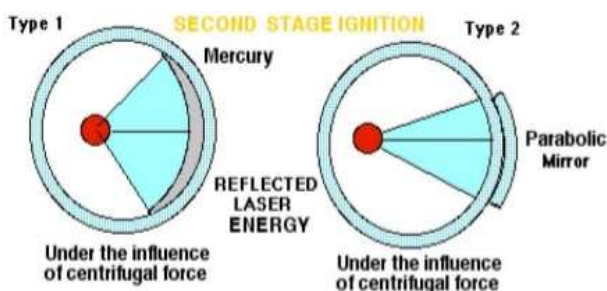


Fig. 6 Secondary ignition stage.

3.2 Plasma Containment

After the plasma is created it must be contained within the torus. The extraterrestrials are assumed to contain the plasma they made, using magnetic bottles, that were sculpted by superimposing moving microwaves over a magnetic field. The created plasma is captured by the moving bottles. The plasma soon forms into the shape of a sphere. This shape is called the minimum free energy configuration. In the containment, the plasma travels within the weakest part of the bottles as shown in Fig.7. This is occurring at a very high speed such that, the plasma will gain in mass at this time. This represents a very high energy unimaginable according to Einstein's energy equation ($E=mc^2$).

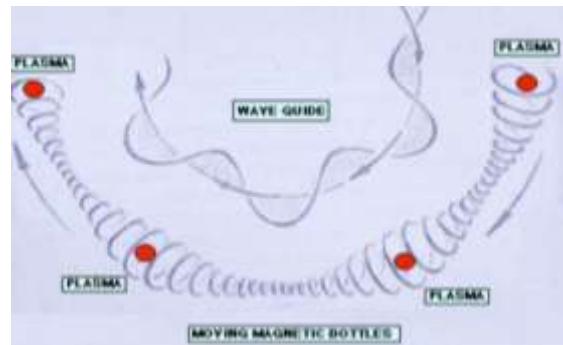


Fig.7 Plasma occupied at the weakest part of the magnetic bottle.

After being contained, the electrons are drawn out of the plasma. This makes the plasma over balanced with positively charged protons along with a large amount of unused WNF. As the plasma is accelerated, the force also gets amplified and its strength becomes relative to the plasma's great mass at near governed light speed.

The major part involved is the extraction of electrons from the created plasma, that make them rich in protons and WNF and amplifying them; which marks the key to antigravity [9].

4. PROPULSION SYSTEM

The craft is normally assumed to be the shape of a disc, which consists of a movable and fixed flange. The excess of weak nuclear forces in search of free electrons and protons travels to the edge of the flange and then flows off the edge of the flange in the direction the flange is pointed. The amplified WNF flows until it encounters the craft's parabolic reflecting dish where it is reflected downward at an angle which is equal to the corresponding planet's axis of rotation relative to the sun. For example, in Earth, the flange will be pointed at an angle of 23.5 degrees.

In order for the amplified WNF in the shape of a vortex to participate in the production of the craft's artificial gravitational field, a magnetic field is required. This is accomplished by using an electromagnetic pole (Fig.8)

in two sections. One end of the pole protrudes from the top of the craft and the other from the bottom. Usually, when electric current enters the coil of the electromagnetic pole at its bottom, the top parts become positive and bottom negative and if the current is reversed the reverse happen.

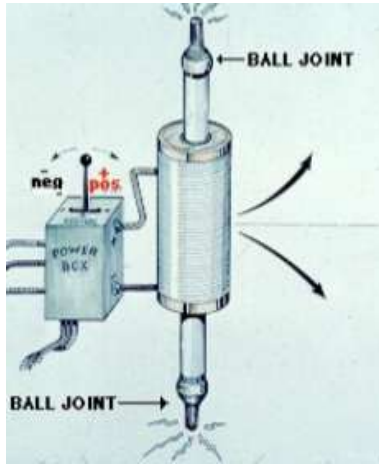


Fig.8 Electromagnetic pole

The pole produces a magnetic field around the craft similar to that of a planet. Considering the craft operating in the earth's atmosphere towards the north of the equator. The craft set the bottom of the pole for negative, thus the craft's artificially amplified WNF in the shape of a spiraling vortex enters into the negative part of the surrounding magnetic field. This procedure is reversed at the south of the planet's equator. The strength of the magnetic field can be varied.

When the craft's surrounding magnetic field is strengthened, its artificially produced gravitational field increases in strength proportionately. Gradually, the crafts produced gravitational field becomes equal to the strength of the planet's natural gravitational field. In the case of Earth, this equalization requires an artificial gravitational force of about 1.4 horsepower. The point at which planet's gravitational field and crafts gravitational field becomes equal is called proportion zero (Fig.9).

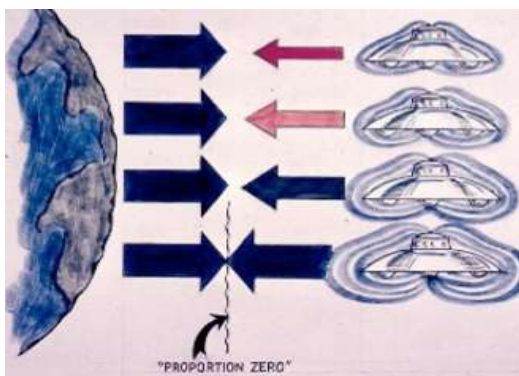


Fig.9 Craft attaining proportion zero condition.

The focal angle of the craft's amplified WNF is equal to angle the planet is tipped relative to the sun. The lines of gravitational force radiating beneath the craft are also aligned to the same angle but are presented out of phase to planet's gravitational lines of force. Since the lines of forces are equal in magnitude, but out of phase, they cancel out each other producing heat. All increase in spacecraft's EM field strength that which are required to produce proportion zero provides the craft with magnetic lift. Thus, the craft propels itself off the planet's surplus magnetism similar to that of two magnets repelling each other [10].

5. CONCLUSION

UFO mode of propulsion system seems to cover different areas of physics about which we are still unaware. Based on the reports of UFO invasion and primary witnesses, the conclusion is made. The modern laws of physics decline the mode and existence of UFO model propulsion system. First of all, the major advantage is that no poisonous propellant is ejected out of the craft during propulsion and it helps in lower its weight to a far extent. Reduced sound pollution and generates a speed of somewhat 100 g's. this helps us to achieve interstellar expeditions revealing the origin of the universe. Although they have demerits as the plasma generation can't be achieved from the present point of view. Also, there is no such fundamental proof regarding the attainment of the artificial gravitational field and proportion zero. But still, there are chances for the answers in the future upcoming. The experiments conducted in the large hadron collider (LHC) etc. may reveal the existence of particles that exhibit light speed and plasma-like matter which really will be an advancement in future space technology.

REFERENCE

- [1] L. R. Shepherd and A. V. Cleaver, The atomic rocket, in L. J. Carter (Ed.), *Realities of Space Travel*, McGraw-Hill, New York, 1957
- [2] A.G.W. Cameron, *Interstellar Communication*, Benjamin, New York, 1963.
- [3] William Markowitz, The Physics and Metaphysics of Unidentified Flying Objects, *Science*, 157, 1967, 1274-1279.
- [4] Wesley Bateman, *Knowledge from the stars: Part two saucer propulsion*, Ra Research Society, 2006.
- [5] L.R. Shepherd, Interstellar flight, *Journal of British Interplanetary Society*, 11, 1952, 149-167.

- [6] O. Heaviside, A Gravitational and Electromagnetic analogy, *Part I. The Electrician*, 31, 1983, 281-282.
- [7] R. Penrose, Gravitational collapse: The role of general relativity, *La Rivista del Nuovo Cimento*, 1, 1969, 252-276..
- [8] S.J. Clark, R.W. Tucker, Gauge symmetry and gravitoelectro magnetism, *Classical and Quantum Gravity*, 17, 2000, 4125-4157.
- [9] R.K. Williams, Gravitomagnetic field and Penrose scattering processes, *Annals of the New York Academy of Sciences*, 1045, 2005, 232-245.
- [10] M. Peskin, D. Schroeder, *An Introduction to Quantum Field Theory*, Westview Press, 1995.