



G7 Leaders' Summit 2020
CLIN001_Leaders' Arrivals

This rendering and all of the intellectual property rights associated herewith: (a) are proprietary to EventEQ with all rights reserved; (b) shall remain the sole and exclusive property of EventEQ; and (c) may not be reproduced or used in any manner whatsoever without the express written permission of EventEQ an ETP company
*any additional structural support elements needed for the safe execution of this design will be illustrated in technical engineering drawings





G7 Leaders' Summit 2020
CLIN003_Leaders' Dinner

This rendering and all of the intellectual property rights associated herewith: (a) are proprietary to EventEQ with all rights reserved; (b) shall remain the sole and exclusive property of EventEQ; and (c) may not be reproduced or used in any manner whatsoever without the express written permission of EventEQ an ETP company
*any additional structural support elements needed for the safe execution of this design will be illustrated in technical engineering drawings





G7 Leaders' Summit 2020
CLIN004_Plenary Meetings

This rendering and all of the intellectual property rights associated herewith: (a) are proprietary to EventEQ with all rights reserved; (b) shall remain the sole and exclusive property of EventEQ; and (c) may not be reproduced or used in any manner whatsoever without the express written permission of EventEQ an ETP company
*any additional structural support elements needed for the safe execution of this design will be illustrated in technical engineering drawings





G7 Leaders' Summit 2020
CLIN004_Plenary Meetings

This rendering and all of the intellectual property rights associated herewith: (a) are proprietary to EventEQ with all rights reserved; (b) shall remain the sole and exclusive property of EventEQ; and (c) may not be reproduced or used in any manner whatsoever without the express written permission of EventEQ an ETP company
*any additional structural support elements needed for the safe execution of this design will be illustrated in technical engineering drawings





G7 Leaders' Summit 2020
CLIN004_Working Lunch

This rendering and all of the intellectual property rights associated herewith: (a) are proprietary to EventEQ with all rights reserved; (b) shall remain the sole and exclusive property of EventEQ; and (c) may not be reproduced or used in any manner whatsoever without the express written permission of EventEQ an ETP company
*any additional structural support elements needed for the safe execution of this design will be illustrated in technical engineering drawings





option A



option B

G7 Leaders' Summit 2020
CLIN020a_Miscellaneous Items

This rendering and all of the intellectual property rights associated herewith: (a) are proprietary to EventEQ with all rights reserved; (b) shall remain the sole and exclusive property of EventEQ; and (c) may not be reproduced or used in any manner whatsoever without the express written permission of EventEQ an ETP company
*any additional structural support elements needed for the safe execution of this design will be illustrated in technical engineering drawings



G7 Leader's Summit 2020
CLIN008 Tent Layout
Bird's Eye View 1 Version 2



This rendering and all of the intellectual property rights associated herewith: (a) are proprietary to EventEQ with all rights reserved; (b) shall remain the sole and exclusive property of EventEQ; and (c) may not be reproduced or used in any manner whatsoever without the express written permission of EventEQ an ETP company
* any additional structural support elements needed for the safe execution of this design will be illustrated in the technical engineering drawings



G7 Leader's Summit 2020
CLIN008 Lounge Vignette
Opiton 1 View 1 Version 2



This rendering and all of the intellectual property rights associated herewith: (a) are proprietary to EventEQ with all rights reserved; (b) shall remain the sole and exclusive property of EventEQ; and (c) may not be reproduced or used in any manner whatsoever without the express written permission of EventEQ an ETP company
* any additional structural support elements needed for the safe execution of this design will be illustrated in the technical engineering drawings



G7 Leader's Summit 2020
CLIN008 Modular Office Space
View 1 Version 2



This rendering and all of the intellectual property rights associated herewith: (a) are proprietary to EventEQ with all rights reserved; (b) shall remain the sole and exclusive property of EventEQ; and (c) may not be reproduced or used in any manner whatsoever without the express written permission of EventEQ an ETP company
* any additional structural support elements needed for the safe execution of this design will be illustrated in the technical engineering drawings



G7
UNITED STATES
CAMP DAVID • 2020



G7 Leader's Summit 2020
CLIN008 Modular Office Space
View 2 Version 2

EVENTEQ

This rendering and all of the intellectual property rights associated herewith: (a) are proprietary to EventEQ with all rights reserved; (b) shall remain the sole and exclusive property of EventEQ; and (c) may not be reproduced or used in any manner whatsoever without the express written permission of EventEQ an ETP company
* any additional structural support elements needed for the safe execution of this design will be illustrated in the technical engineering drawings



G7
UNITED STATES
CAMP DAVID · 2020

G7 Leader's Summit 2020
CLIN008 Pull Aside
Opiton 1 View 1 Version 2

EVENTEQ

This rendering and all of the intellectual property rights associated herewith: (a) are proprietary to EventEQ with all rights reserved; (b) shall remain the sole and exclusive property of EventEQ; and (c) may not be reproduced or used in any manner whatsoever without the express written permission of EventEQ an ETP company
* any additional structural support elements needed for the safe execution of this design will be illustrated in the technical engineering drawings



G7 Leaders' Summit 2020
CLIN009_Bilateral Meeting-Library

This rendering and all of the intellectual property rights associated herewith: (a) are proprietary to EventEQ with all rights reserved; (b) shall remain the sole and exclusive property of EventEQ; and (c) may not be reproduced or used in any manner whatsoever without the express written permission of EventEQ an ETP company
*any additional structural support elements needed for the safe execution of this design will be illustrated in technical engineering drawings





G7 Leaders' Summit 2020
CLIN011_Family Photo

This rendering and all of the intellectual property rights associated herewith: (a) are proprietary to EventEQ with all rights reserved; (b) shall remain the sole and exclusive property of EventEQ; and (c) may not be reproduced or used in any manner whatsoever without the express written permission of EventEQ an ETP company
*any additional structural support elements needed for the safe execution of this design will be illustrated in technical engineering drawings





G7 Leaders' Summit 2020
CLIN015_Press Conference

This rendering and all of the intellectual property rights associated herewith: (a) are proprietary to EventEQ with all rights reserved; (b) shall remain the sole and exclusive property of EventEQ; and (c) may not be reproduced or used in any manner whatsoever without the express written permission of EventEQ an ETP company
*any additional structural support elements needed for the safe execution of this design will be illustrated in technical engineering drawings

EVENTEQ



G7

UNITED STATES

CAMP DAVID · 2020



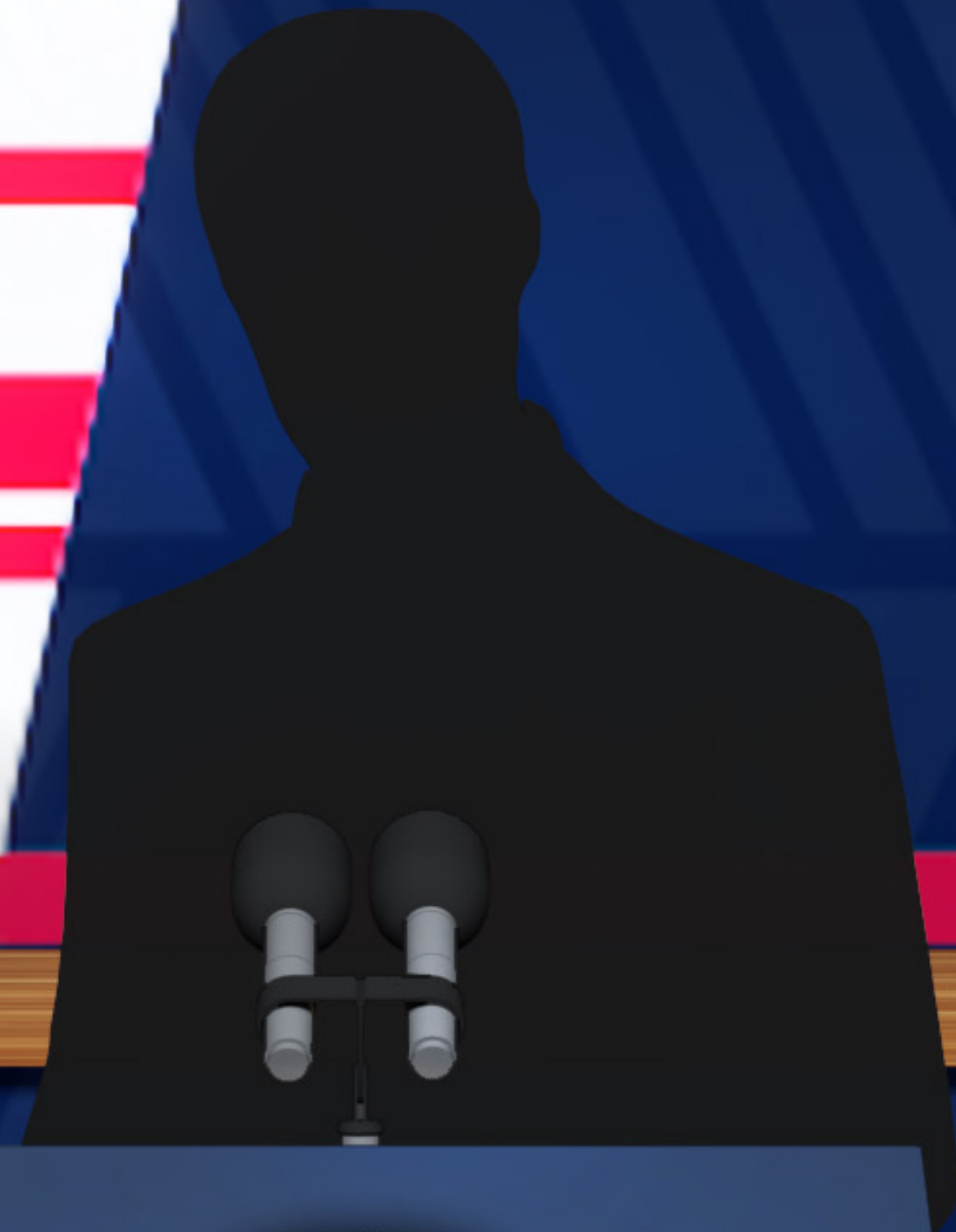
G7 Leaders' Summit 2020
CLIN015_Press Conference

This rendering and all of the intellectual property rights associated herewith: (a) are proprietary to EventEQ with all rights reserved; (b) shall remain the sole and exclusive property of EventEQ; and (c) may not be reproduced or used in any manner whatsoever without the express written permission of EventEQ an ETP company
*any additional structural support elements needed for the safe execution of this design will be illustrated in technical engineering drawings

EVENTEQ

UNITED STATES

DAVID · 2020



G7 Leaders' Summit 2020
CLIN015_Press Conference

This rendering and all of the intellectual property rights associated herewith: (a) are proprietary to EventEQ with all rights reserved; (b) shall remain the sole and exclusive property of EventEQ; and (c) may not be reproduced or used in any manner whatsoever without the express written permission of EventEQ an ETP company
*any additional structural support elements needed for the safe execution of this design will be illustrated in technical engineering drawings





G7 Leaders' Summit 2020
CLIN015_Press Conference

This rendering and all of the intellectual property rights associated herewith: (a) are proprietary to EventEQ with all rights reserved; (b) shall remain the sole and exclusive property of EventEQ; and (c) may not be reproduced or used in any manner whatsoever without the express written permission of EventEQ an ETP company
*any additional structural support elements needed for the safe execution of this design will be illustrated in technical engineering drawings





G7 Leaders' Summit 2020
CLIN016_Leaders' Lounge

This rendering and all of the intellectual property rights associated herewith: (a) are proprietary to EventEQ with all rights reserved; (b) shall remain the sole and exclusive property of EventEQ; and (c) may not be reproduced or used in any manner whatsoever without the express written permission of EventEQ, an ETP company. *any additional structural support elements needed for the safe execution of this design will be illustrated in technical engineering drawings.





WELCOME



G7 Leaders' Summit 2020
CLIN020_Signage

This rendering and all of the intellectual property rights associated herewith: (a) are proprietary to EventEQ with all rights reserved; (b) shall remain the sole and exclusive property of EventEQ; and (c) may not be reproduced or used in any manner whatsoever without the express written permission of EventEQ an ETP company
*any additional structural support elements needed for the safe execution of this design will be illustrated in technical engineering drawings



G7 Leaders' Summit 2020
CLIN020_Pylon

This rendering and all of the intellectual property rights associated herewith: (a) are proprietary to EventEQ with all rights reserved; (b) shall remain the sole and exclusive property of EventEQ; and (c) may not be reproduced or used in any manner whatsoever without the express written permission of EventEQ an ETP company
*any additional structural support elements needed for the safe execution of this design will be illustrated in technical engineering drawings

EVENTEQ