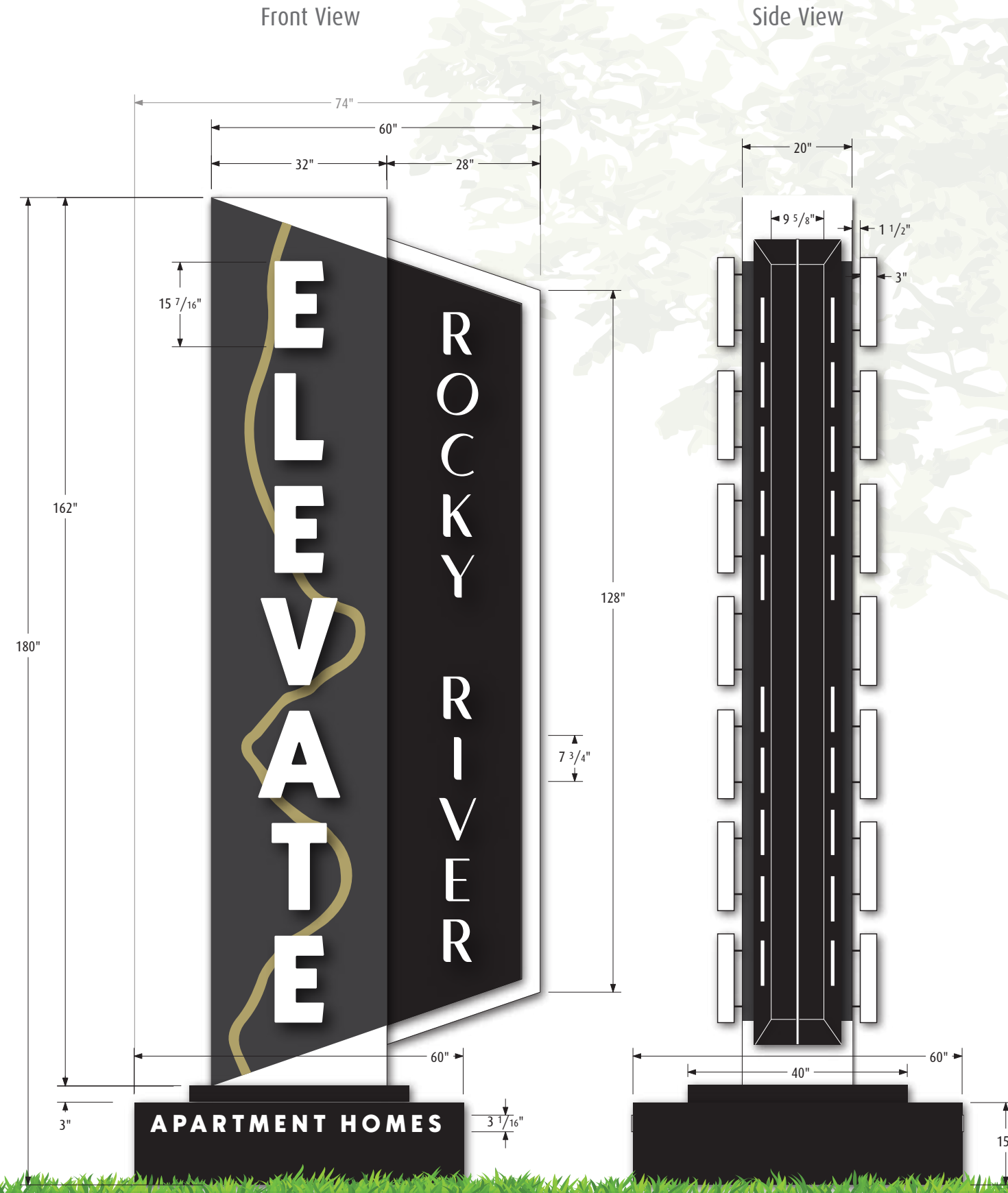


ST-A | Primary/Bypass Monument ID

QTY. 1 - DF
 Approximately 60" wide x 180" high x 60" deep overall. 75 sq. ft.

Aluminum fabricated, double sided, monument w/ bright white LED illumination. Faceted design w/ accent fin along outermost edge. Elevate letters are halo-lit channel letters, and Rocky River letters are push-thru acrylic w/ opaque vinyl overlays on faces to create halo-illumination. Option for perimeter lighting from accent border. Apt. Homes copy is stud mounted 1/4" plate letters to aluminum fabricated base. Sign is direct buried into grade via single HSS internal post.

Font: Newake, Merry Cost-Regular
 Colors: SC-905 Black, SC-901 White, MX12 Dusted Gold, SC-904 Dark Grey



Back View



ST-A.1 | Secondary Monument ID

QTY. 1 - DF

Approximately 40" wide x 120" high x 40" deep overall. 33.33 sq. ft.

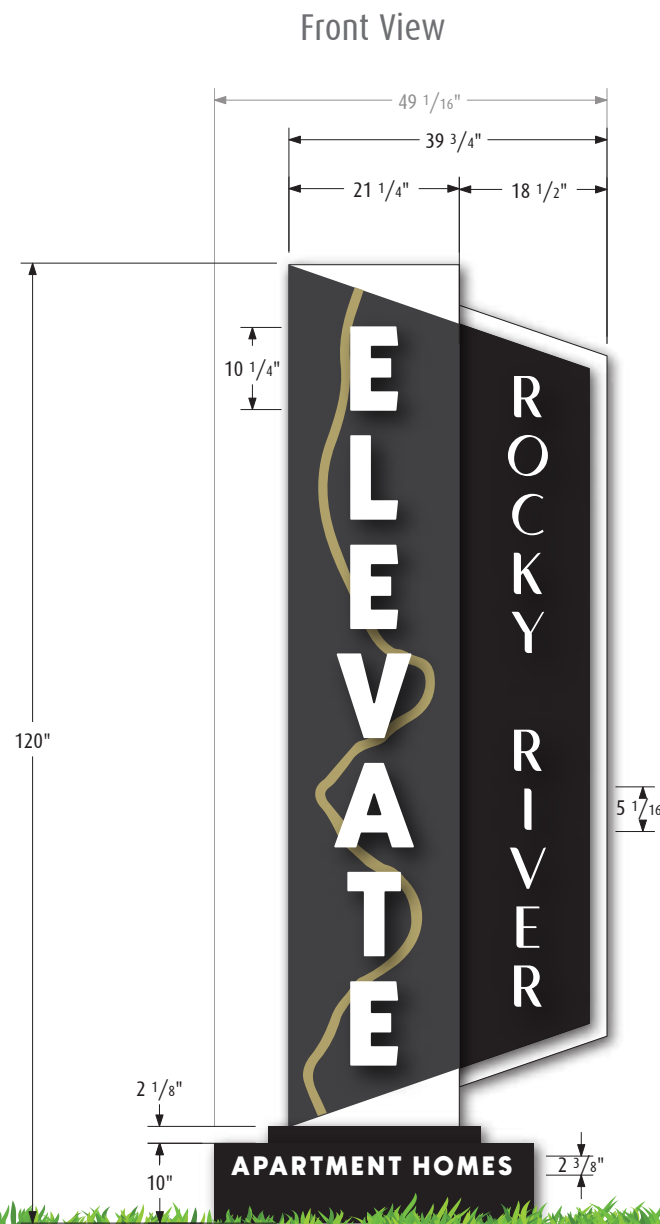
Aluminum fabricated, double sided, monument w/ bright white LED illumination. Faceted design w/ accent fin along outermost edge. Elevate letters are halo-lit channel letters, and Rocky River letters are push-thru acrylic w/ opaque vinyl overlays on faces to create halo-illumination. Option for perimeter lighting from accent border. Apt. Homes copy is stud mounted 1/4" plate letters to aluminum fabricated base. Sign is direct buried into grade via single HSS internal post.

Font: Newake, Merry Cost-Regular

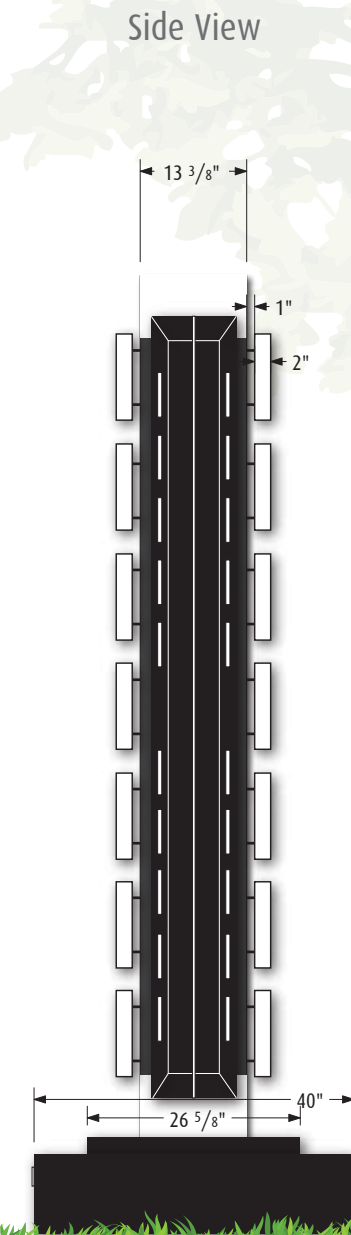
Colors: SC-905 Black, SC-901 White, MX12 Dusted Gold, SC-904 Dark Grey



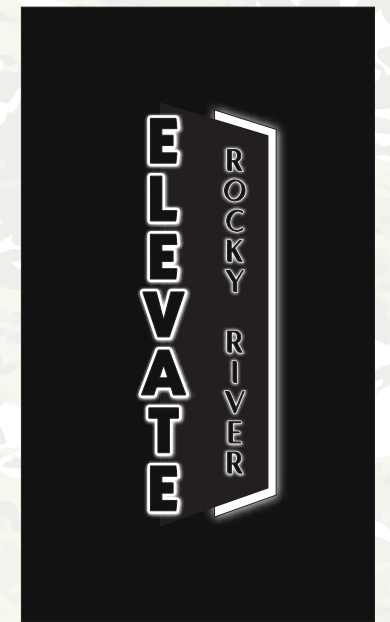
Back View



Front View



Side View



Possible Night View