

ST-A.1 | Main Blade ID

Approximately 35" W x 214" H overall - roughly 47.55 sq. ft.

Aluminum fabricated, double sided blade sign w/ white LED internally illumination. Background to have printed teal chevron brand pattern w/ logo graphics routed out of face & backed w/ translucent white acrylic. 'AVERY' letters to have translucent orange vinyl overlays on faces. Bottom address cabinet to have routed out & acrylic backed graphics w/ surface painted background. Outer perimeter frame on both top and bottom graphic areas to be slightly raised (roughly 1"). Sign mounts to existing building via (3) aluminum mounting arms w/ plates, mechanically fastened to internal tube frame of blade & to structural blocking of building.

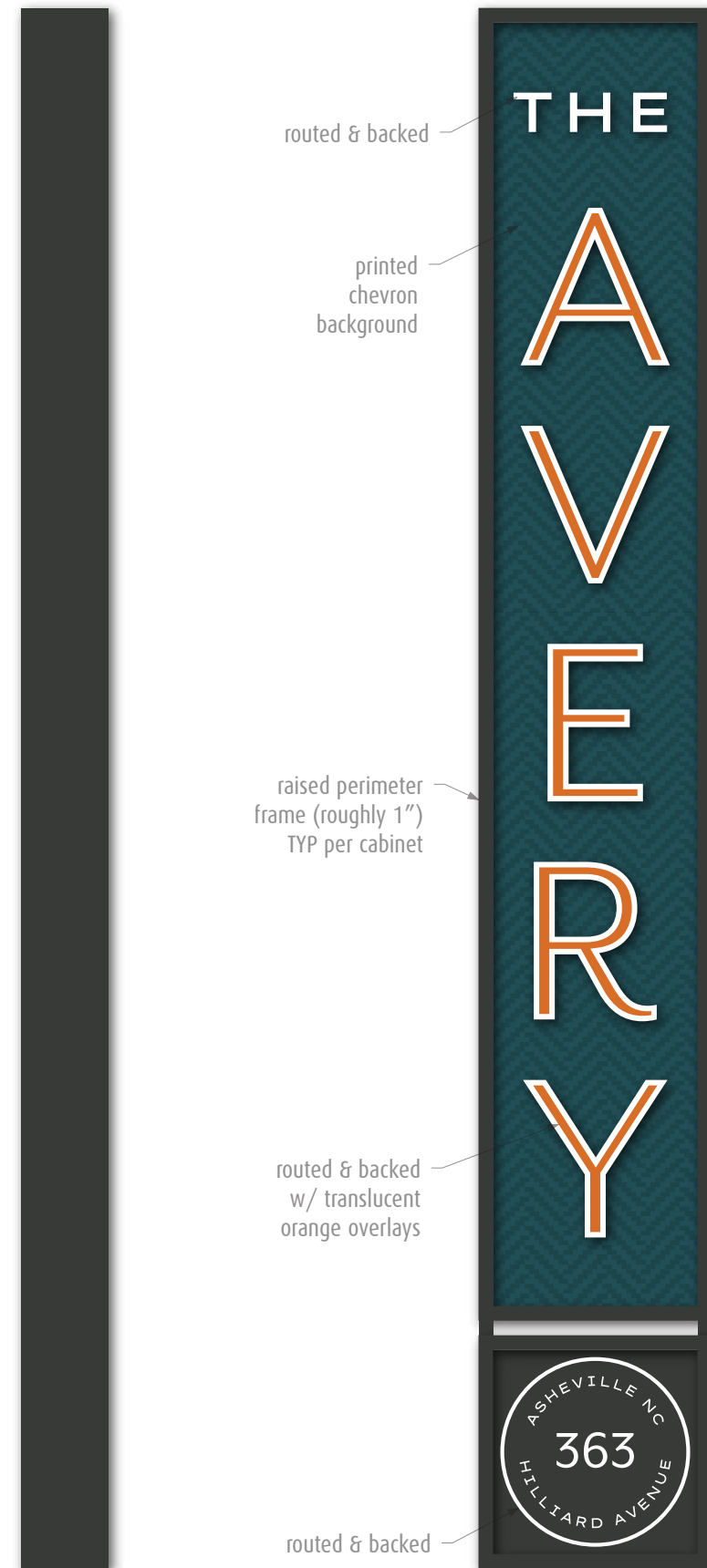
Note: Must have dimmer control & photocell; light intensity cannot exceed 5,000 nits.

Font/logo: Mr Eaves San OT Reg, Lexend Zetta Regular

Colors:

- Pantone 447C Carob
- SC-901 White
- Pantone 2019C Tiger
- Pantone 7476C Teal
- SW7623 Cascades

Side View



cannot project above 3rd floor of bldg

ST-A.2 | Pedestrian Blade ID




Approximately 35" W x 32" H overall

Aluminum fabricated, double sided blade sign w/ white LED illumination & routed out & acrylic backed graphics (only logo to illuminate). Printed brand background w/ raised outer frame. Mounts via mounting arms & plates to building.

Note: Must have dimmer control & photocell; light intensity cannot exceed 5,000 nits.

Font/logo: Mr Eaves San OT Reg, Lexend Zetta Regular

Colors:

-  Pantone 447C Carob
-  SC-901 White
-  Pantone 2019C Tiger
-  Pantone 7476C Teal
-  SW7623 Cascades



ST-E | Building Letters

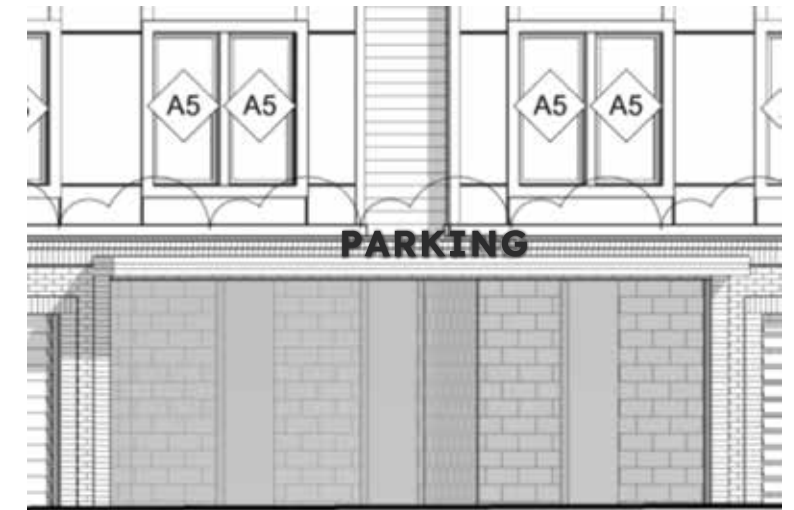
Approximately 73" W x 10" H overall

1/4" thick aluminum plate letters, mounting TBD, proposed method to top of canopy.

Font/logo: Mr Eaves San OT Reg, Lexend Zetta Regular

Colors:

 Pantone 447C Carob



Proposed Location



Side View



ST-F | Building Address

Approximately 30-1/2" W x 12" H overall

1/4" thick aluminum plate letters, mounted flush to building w/ concealed studs. Exact locations TBD.

Font/logo: Mr Eaves San OT Reg, Lexend Zetta Regular

Colors:



363








ST-G & H | Directionals

1" deep aluminum fabricated pan w/ surface paint & surface graphics, mounted on 2" square aluminum posts, surface painted & direct buried into grade.

Font/logo: Mr Eaves San OT Reg, Lexend Zetta Regular

Colors:

-  Pantone 447C Carob
-  SC-901 White
-  Pantone 2019C Tiger
-  Pantone 7476C Teal
-  SW7623 Cascades

ST-G | Primary Directional
Approximately 36" W x 28" H overall



ST-H | Secondary Directional
Approximately 30" W x 36" H overall



ST-Z1 | Clearance Bar

Approximately 108" W x 8" H overall

8" (Ø) PVC pipe, surface painted w/ white reflective vinyl graphics applied to face; mounting method TBD.

Font/logo: Mr Eaves San OT Reg, Lexend Zetta Regular

Colors:

 Pantone 447C Carob

 White Reflective Vinyl

NOTE: verify clearance height



Proposed Location



Parking Signs

.080" aluminum panel w/ reflective graphics mounted on 2" square aluminum post (where applicable).

Font/logo: Mr Eaves San OT Reg, Lexend Zetta Regular

Colors:

- Pantone 447C Carob
- SC-901 White
- Pantone 7476C Teal

STZ5.1
Car Charging
12"W x 18"H



STZ7.1
Handicap
12"W x 18"H



STZ8.1
Handicap w/ Van
12"W x 18"H
12"W x 6"H



Wall Mounted Panels



STZ7
Handicap
12"W x 18"H



STZ8
Handicap
12"W x 18"H
12"W x 6"H

