



ENTERPRISE
OFFICE CENTER

2205 - 2255 ENTERPRISE DRIVE
WESTCHESTER, IL

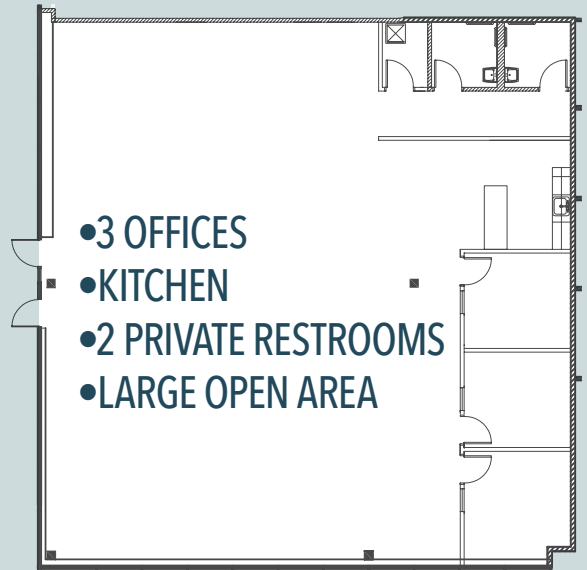


NEW
OFFICE SPACE
NEAR OAKBROOK CENTER

AVAILABLE FOR
IMMEDIATE OCCUPANCY

SUITE 5505
3,598 RSF

These buildings offer private entrances with parking available right outside, 24-hour access, tenant-controlled HVAC, and abundant parking. The complex is supported by an on-site engineer for added convenience.



[DOWNLOAD BROCHURE](#)

[VIDEO WALKTHROUGH](#)



Enterprise Office Center is an office complex consisting of six one-story buildings located in southwest Westchester, IL. The property provides easy access to I-88, I-294, and I-290, and is minutes to Oakbrook Center.

LARRY MEYER
847.212.3220
lmeyer@marcrealty.com

ALAN RAPHAELI
847.330.1300
araphaeli@marcrealty.com

MR Exceptional Value
Remarkable Locations
MARC REALTY