

65 HORTON

65 SOUTH HORTON STREET
SEATTLE, WA 98134

NEW CONSTRUCTION
132,260 SF AVAILABLE
READY FOR OCCUPANCY

WWW.65HORTON.COM

STATE-OF-THE-ART INDUSTRIAL FOR LEASE

RYAN **CBRE**

65 HORTON



PROPERTY FEATURES



PARKING

82 secured
parking stalls



ELEVATORS

Twin freight elevator access
12,000-lb. capacity



LIVE LOAD

100-175 lb. / SF



POWER

3,000 amps
expandable to 4,000



LOADING

10 dedicated
and assigned
truck loading docks



CLEAR HEIGHT

18' to structure

FACT SHEET

BUILDING DATA

- Floor plates divisible to 10,000 SF
- 10 exclusive docks and secured receiving bay
- 18' clear height to structure
- Window heights: 3' - 9'6"
- 3,000 amp service expandable to 4,000 amps
- 100 lb/SF office load
- 175 lb/SF racking load
- ESFR sprinklers

ON-SITE AMENITIES

- Fourth floor terrace
- 82 secured parking stalls
- Bike storage
- Secure, common entry & passenger elevator

CONSTRUCTION TIMELINE

- Ready for TI start
- Ready for occupancy now
- Spec office underway

OWNERSHIP



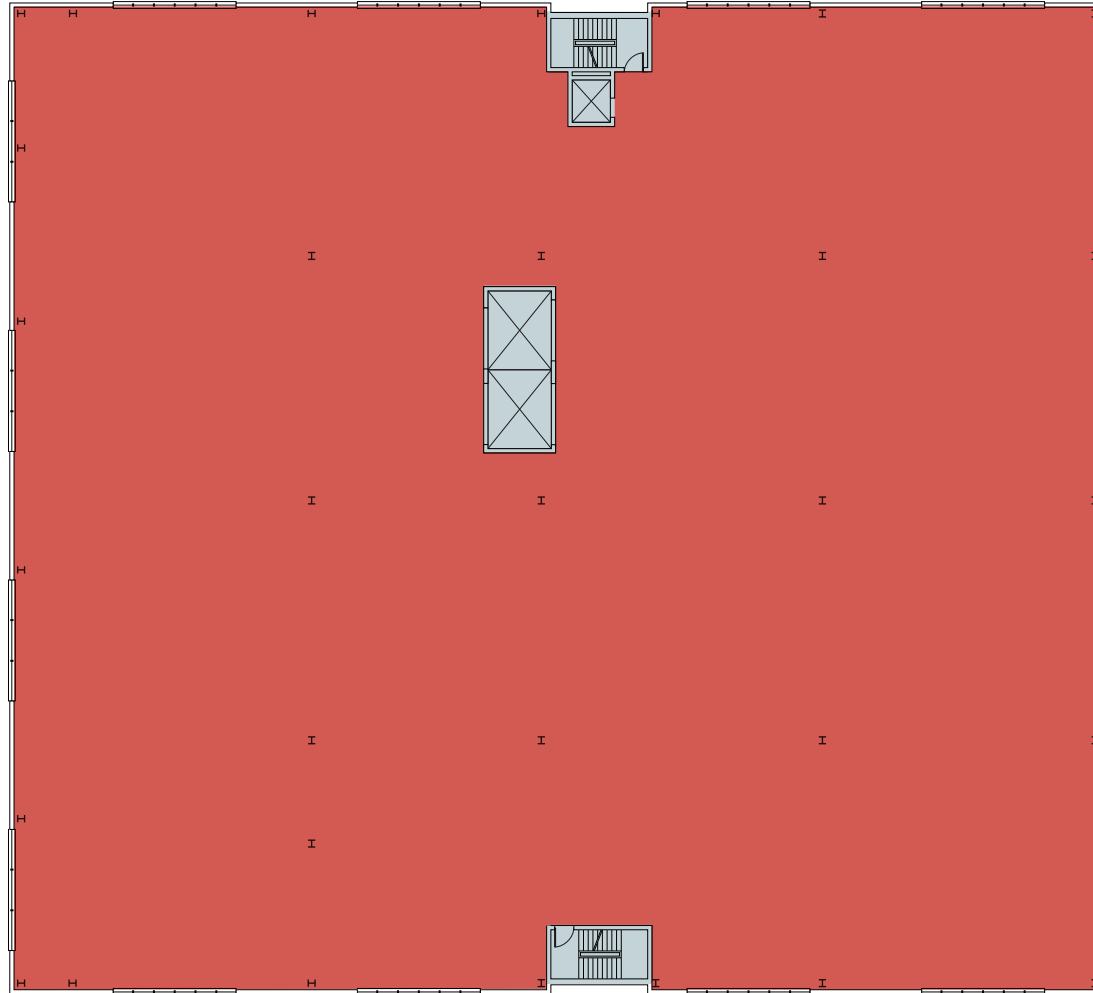
LEASING

- Andrew Stark | +1 206 442 2746 | andrew.stark@cbre.com
- Zac Snedeker | +1 206 442 2709 | zac.snedeker@cbre.com



132,260 SF AVAILABLE
FOR LEASE

FLOORPLANS

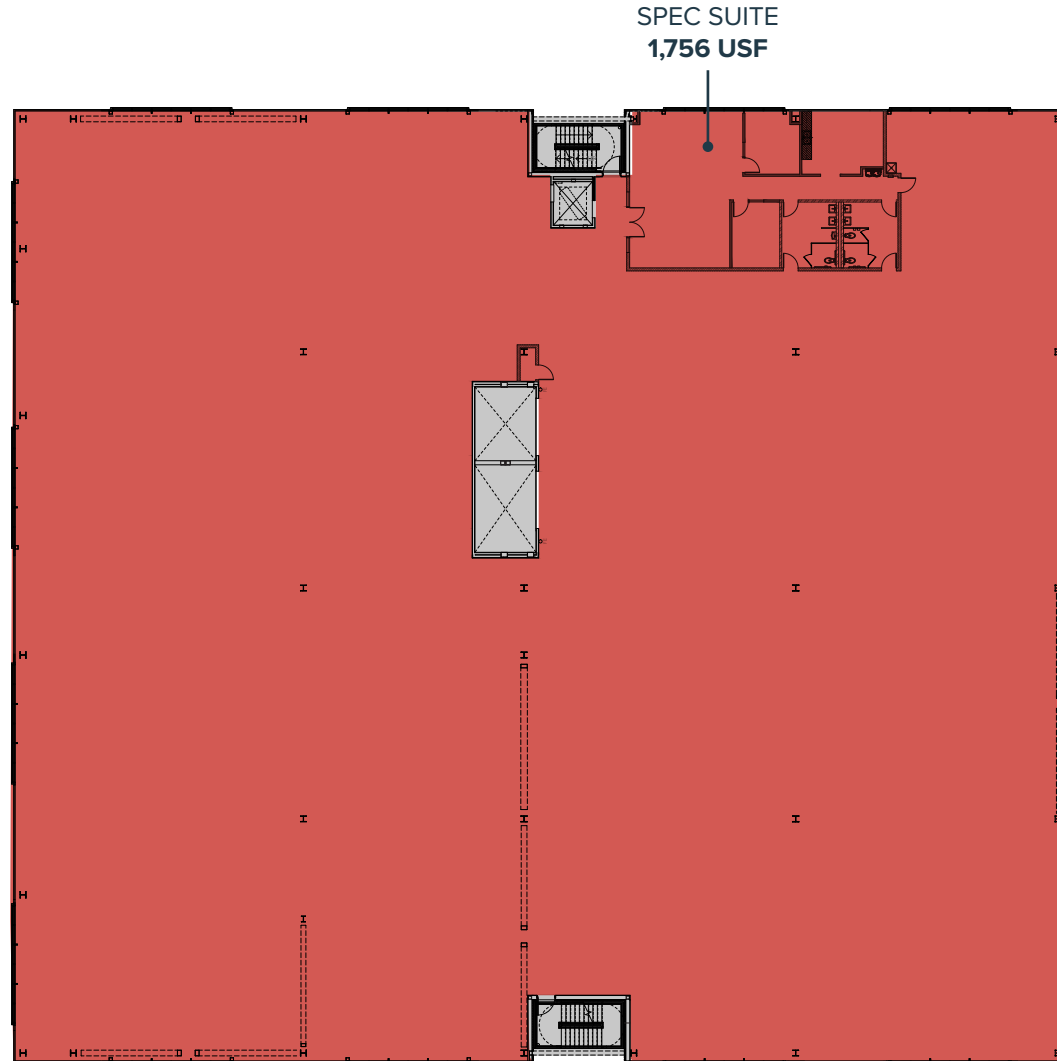


SINGLE TENANT



SINGLE OR MULTI-TENANT CONFIGURATIONS POSSIBLE

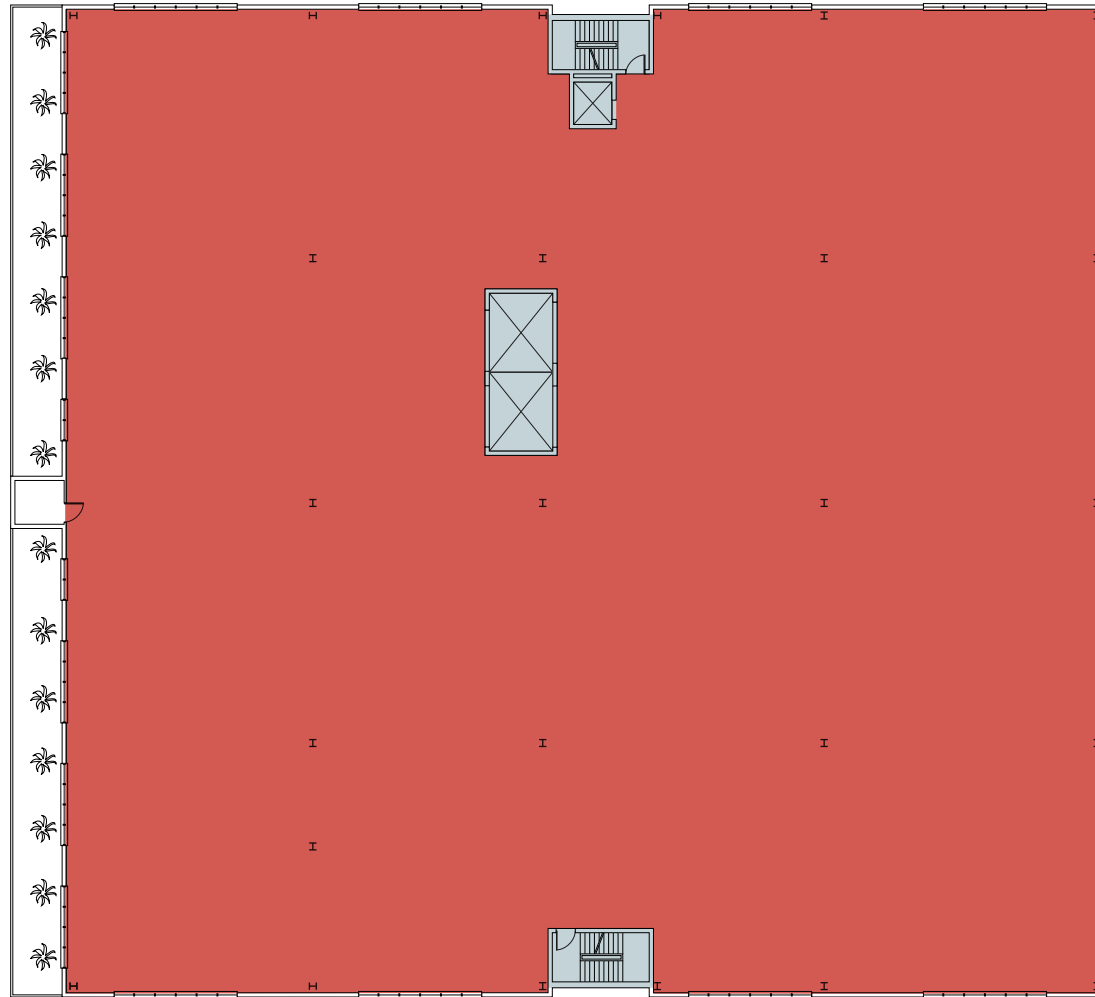
FLOORPLANS



SINGLE TENANT



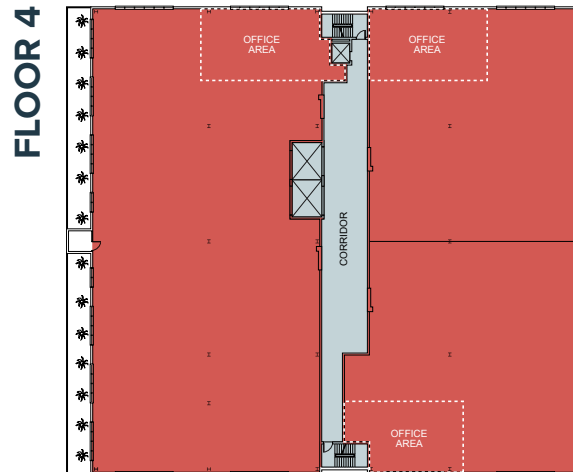
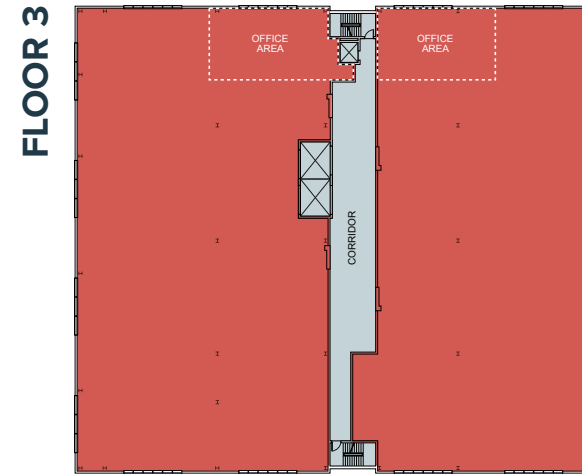
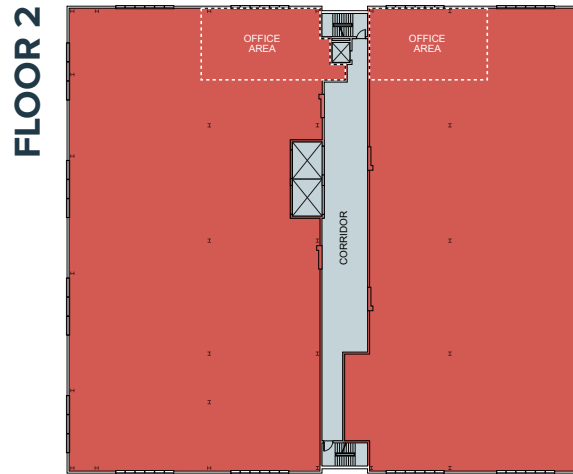
FLOORPLANS



SINGLE TENANT



FLOOR PLANS



Click to view
possible multi-tenant
configurations

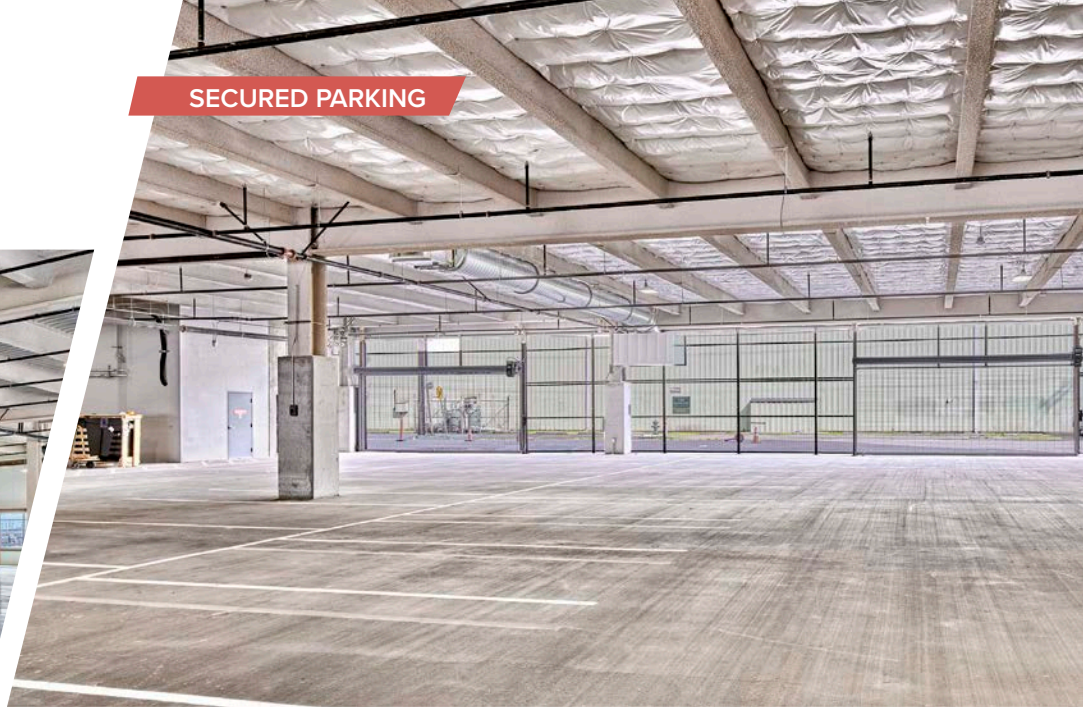


BUILDING PHOTOS

18' CLEAR TO STRUCTURE



SECURED PARKING



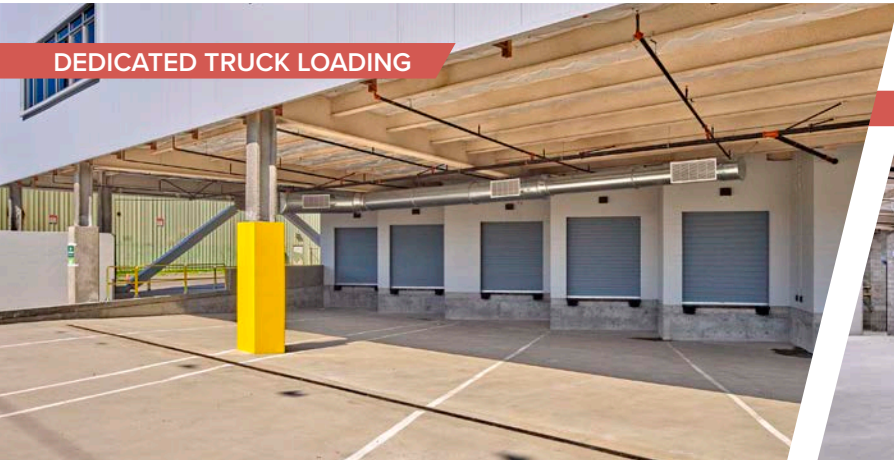
4TH FLOOR ROOFTOP



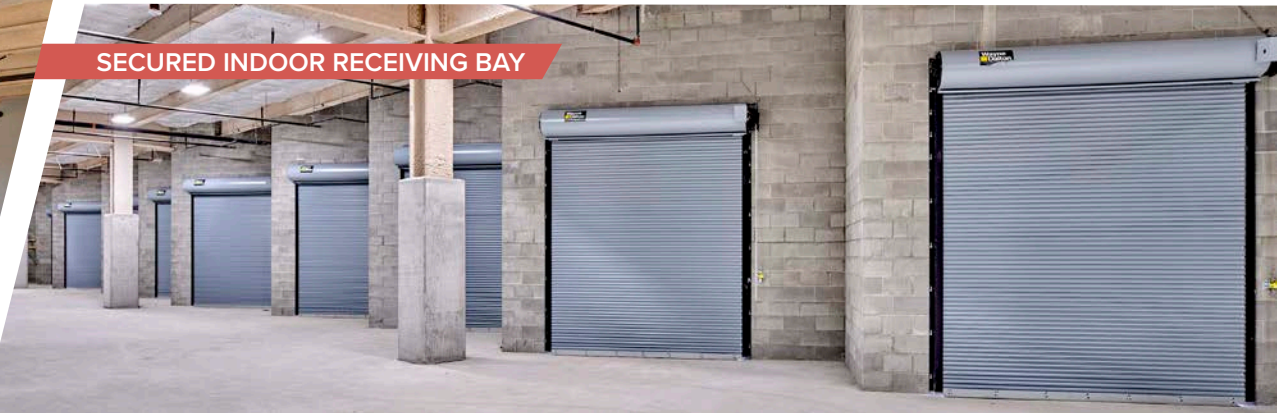
FREIGHT ELEVATOR ACCESS 12,000 LB CAPACITY



DEDICATED TRUCK LOADING

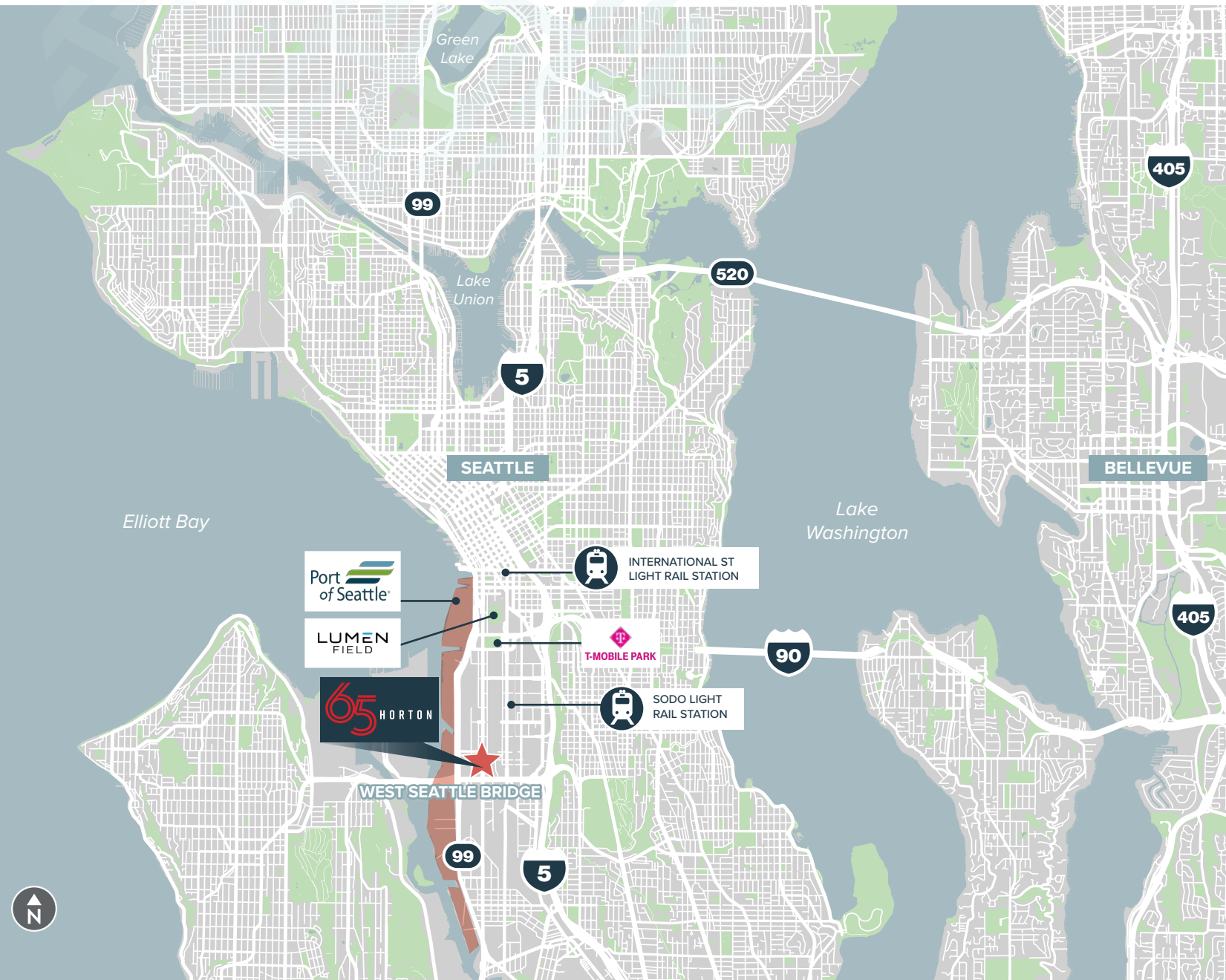


SECURED INDOOR RECEIVING BAY



THE LOCATION

DRIVE TIMES



3.7
MILES TO/FROM
SEATTLE CBD

11
MILES TO/FROM
BELLEVUE CBD

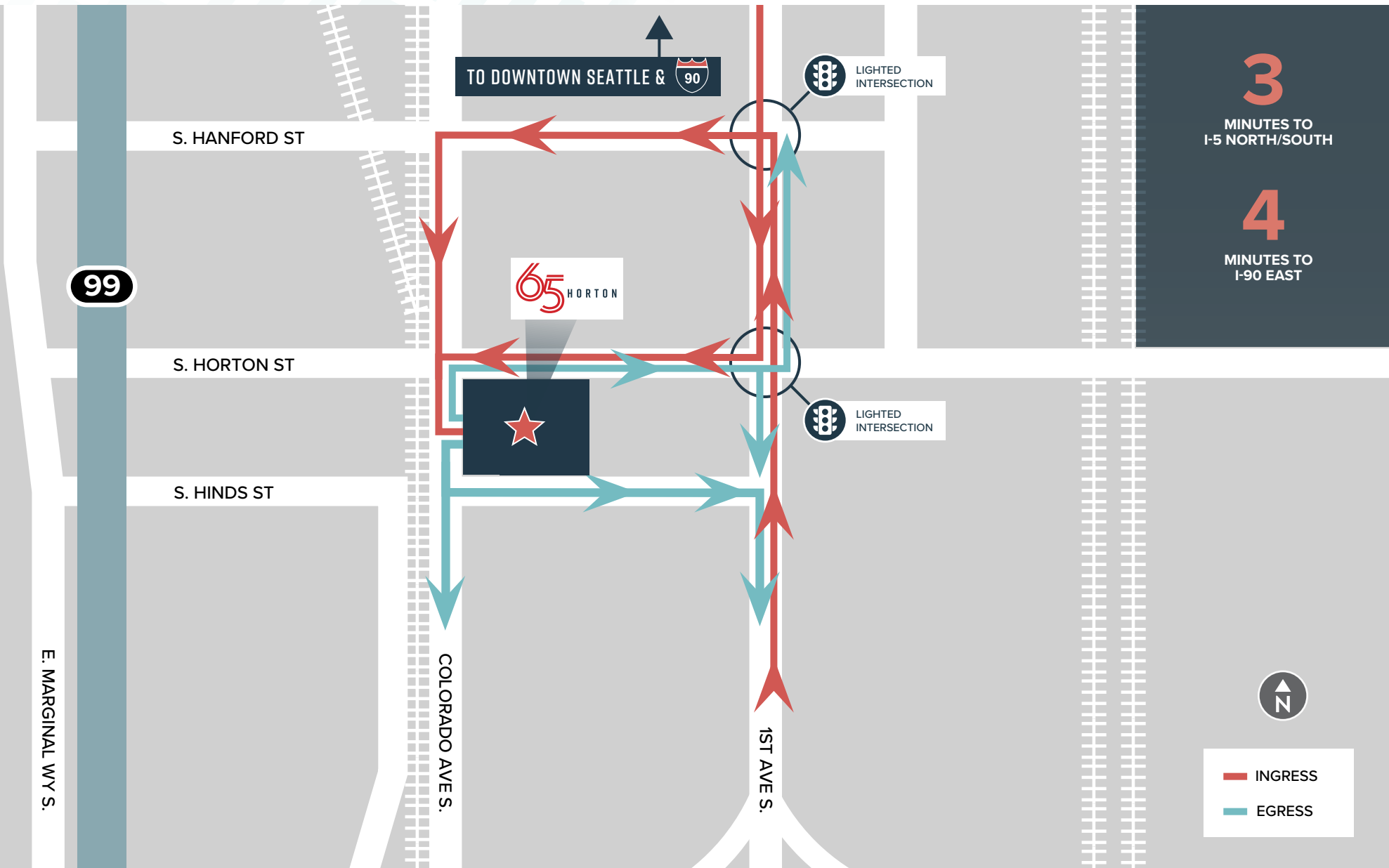
2.5
MILES TO/FROM
PORT OF SEATTLE

11
MILES TO/FROM
SEATAC AIRPORT

31
MILES TO/FROM
PORT OF TACOMA



INGRESS / EGRESS ROUTES



3
MINUTES TO
I-5 NORTH/SOUTH

4
MINUTES TO
I-90 EAST

— INGRESS
— EGRESS

NEIGHBORHOOD AMENITIES

- | | |
|--------------------|-----------------------------|
| 1. FaveKitchens | 16. Sodo Poke & More |
| 2. Big Smoke BBQ | 17. Starbucks Reserve |
| 3. Hooverville Bar | 18. Seattle's Best Teriyaki |
| 4. EFESTE-Sodo | 19. Dona Queen Donut |
| 5. Paseo | 20. Subway |
| 6. Blazing Bagels | 21. Denny's |
| 7. Krispy Kreme | 22. Cafe Con Leche |
| 8. Jack in the Box | 23. By's |
| 9. Jimmy John's | 24. Franz |
| 10. Macrina Bakery | 25. Monkey Loft |
| 11. Starbucks | 26. Ghostfish Brewery |
| 12. Taco Bell | 27. Republic of Cider |
| 13. Derby | 28. Pick-Quick Drive In |
| 14. Pecos Pit BBQ | 29. Orient Express |
| 15. McDonald's | 30. Seapine Brewery |



SOUND TRANSIT
LIGHT RAIL STATION



T-MOBILE
PARK

Seattle CBD
Lumen Field
Exhibition Center

SODO LIGHT
RAIL STATION

65 HORTON

Duwamish Waterway



65 HORTON

ANDREW STARK

Executive Vice President
+1 206 442 2746
andrew.stark@cbre.com

ZAC SNEDEKER

Senior Vice President
+1 206 442 2709
zac.snedeker@cbre.com

CBRE, INC.

1420 5th Avenue
Suite 3800
Seattle, WA 98101

WWW.65HORTON.COM

© 2024 CBRE, Inc. All rights reserved. This information has been obtained from sources believed reliable, but has not been verified for accuracy or completeness. You should conduct a careful, independent investigation of the property and verify all information. Any reliance on this information is solely at your own risk. CBRE and the CBRE logo are service marks of CBRE, Inc. All other marks displayed on this document are the property of their respective owners, and the use of such logos does not imply any affiliation with or endorsement of CBRE. Photos herein are the property of their respective owners. Use of these images without the express written consent of the owner is prohibited.PMStudio_January2024

RYAN

CBRE