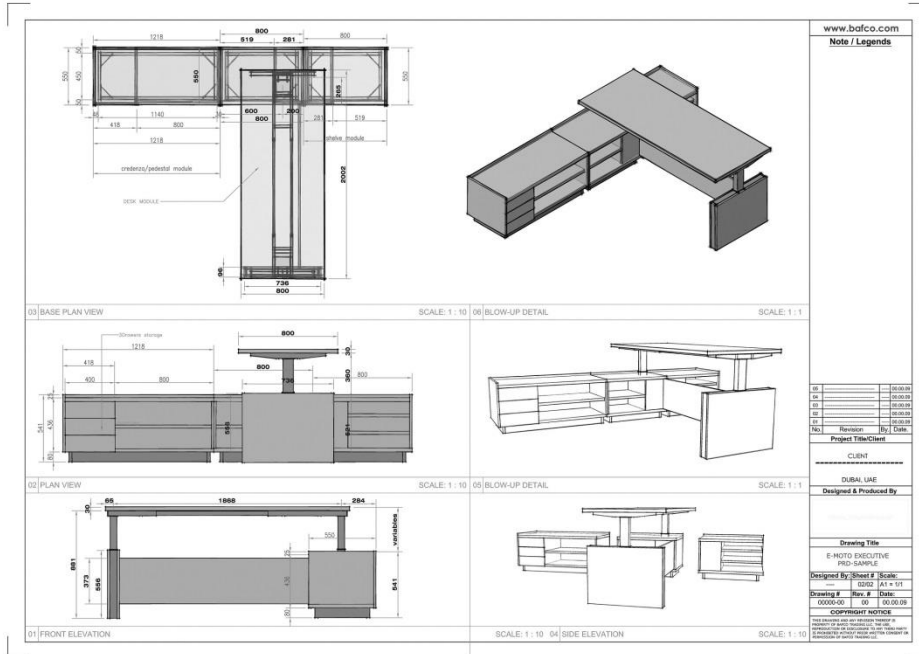


E- moto modular High Adjustable Desk (Proposed and manufactured)



E-MOTO

The latest on the development is to cater the moving work space in the modern society.

Designing the product in modular components that can handle with modularity and harmonizing with the work space.

Combination of premium quality MELAMINE FACE CHIPBOARD materials with high quality impregnating prints of more natural wood feelings.

Motorized high adjustable mechanism are selected and work with the best quality manufacturer with the high quality extendable frames to suit the size that the space required.

MATERIALS

Premium Quality MFC (Melamine Face Chipboards) with abs 1.00 mm edge banding for the DESK top and main surface that required high abrasive resistance and stain.

Accent parts in MR/ MDF finish with high quality Polyurethane paints in high gloss or matt as required.

Pre- manufactured high adjustable frames in powder coat finish white / black with extendable frame.

All connectors are highly selected and in superb quality made by Italina Ferramenta, one of the worlds best quality fixtures.



PROCEDURES

Proper selection of component and raw materials.

Developing the conceptual drawing – looking into modularity and functions.

Machining and testing of all components and connectors seeing to it that it will stands strong and hold properly.

Testing the mechanism and modular connectors repeatedly in insure quality.

WHAT INTEREST ME ABOUT THE PROGRAM

As FURNITURE DESIGNER, the process of making your idea in to reality is a huge accomplishment. To see your design not only I drawing or in CAD but running in the manufacturing floor turning into a product is exciting.

WHAT DO YOU HOPE TO ACHIEVE IN THE PROGRAM

First is to develop a sophisticated product and second and most important that will get a positive welcome in the market where revenues are expected to cover all the development cost .