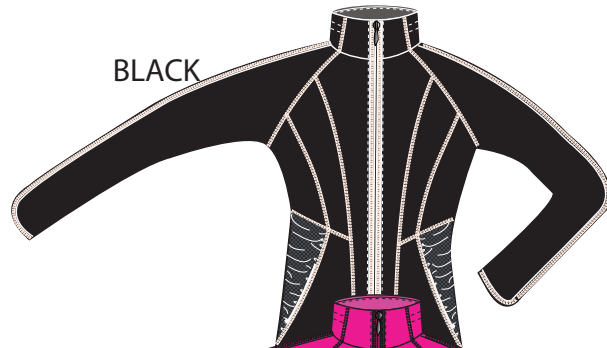




JACKET W/RUCHING

Style# AJ-1006



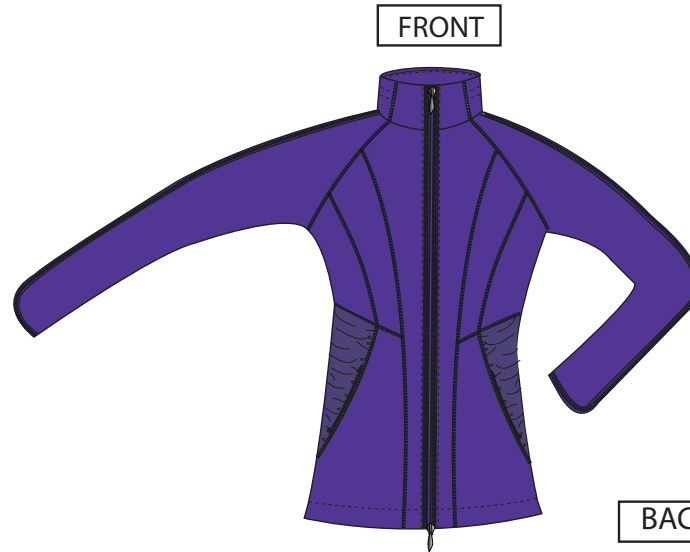
BLACK



DIVA PINK



ELECTRIC
BLUE



FRONT

SIMPLY
PURPLE



BACK

1/4" FLATLOCK STITCH AT ALL SEAMS
S.N. & D.N. AS NOTED



STYLE #: AJ-1006

DATE:

COLORWAY

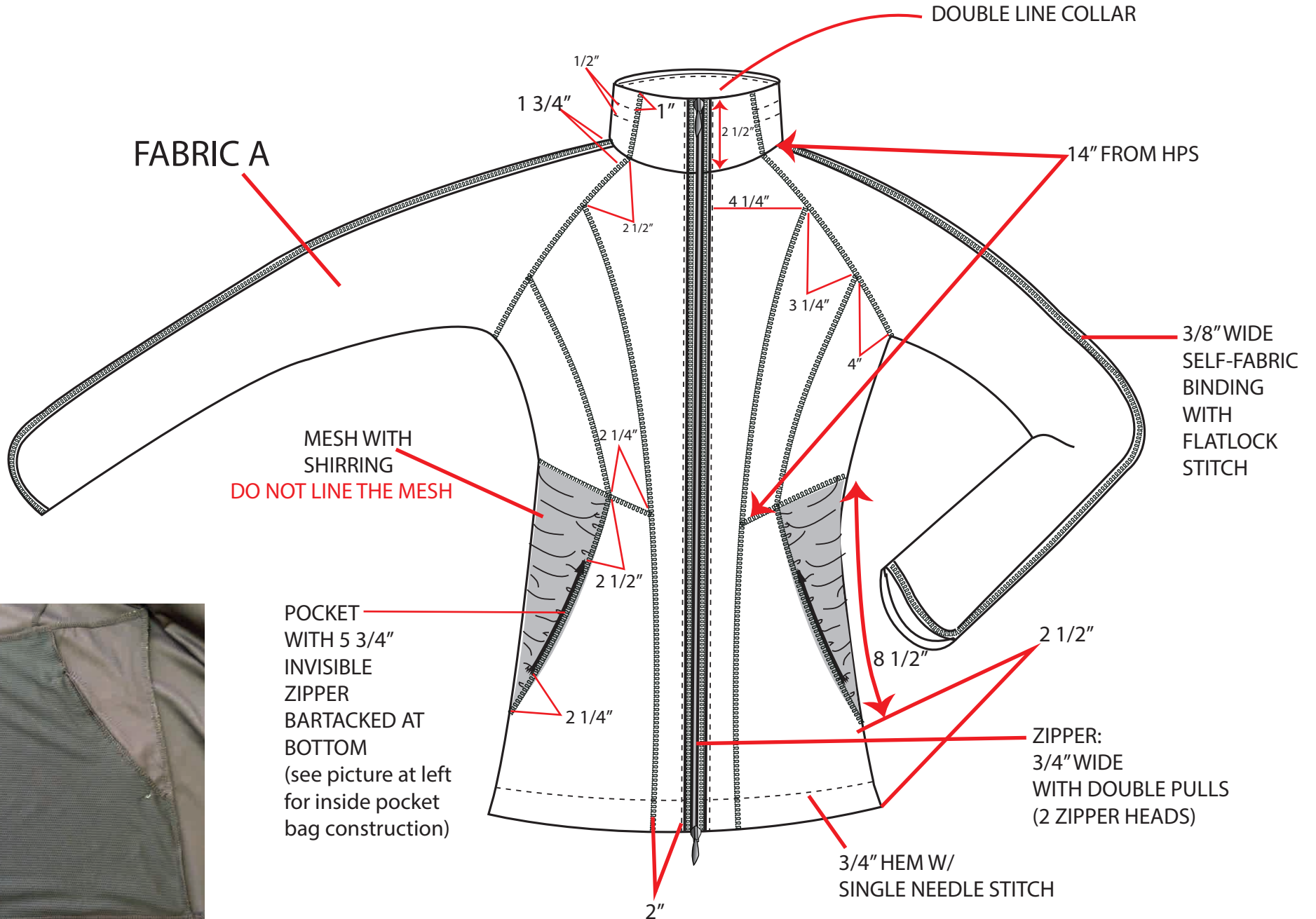
COMPONENTS	COLORWAY 1	COLORWAY 2	COLORWAY 3	COLORWAY 4
FABRIC A-BODY	90/10 POLYESTER/ SPANDEX, 280GM, 4-WAY STRETCH DULL FINISH PANTONE 19-4006 TPX BLACK	90/10 POLYESTER/ SPANDEX, 280GM, 4-WAY STRETCH DULL FINISH PANTONE BRIGHTS ELECTRIC BLUE 18-4245 TN	90/10 POLYESTER/ SPANDEX, 280GM, 4-WAY STRETCH DULL FINISH PANTONE BRIGHTS DIVA PINK 16-1650 TN	90/10 POLYESTER/ SPANDEX, 280GM, 4-WAY STRETHC DULL FINISH PANTONE BRIGHTS SIMPLY PURPLE 18-3940 TN
FABRIC B-MESH	90/10 POLY/SPANDEX PANTONE 19-4006 TPX BLACK	90/10 POLY/SPANDEX PANTONE BRIGHTS ELECTRIC BLUE 18-4245 TN	90/10 POLY/SPANDEX PANTONE BRIGHTS DIVA PINK 16-1650 TN	90/10 POLY/SPANDEX PANTONE BRIGHTS SIMPLY PURPLE 18-3940 TN
FABRIC BINDING	PANTONE 19-4006 TN BLACK	PANTONE BRIGHTS 18-4245 TN ELECTRIC BLUE	PANTONE BRIGHTS 16-1650 TN DIVA PINK	PANTONE BRIGHTS 18-3940 TN SIMPLY PURPLE
BODY STITCH & BARTACK COLOR	DTM	DTM	DTM	DTM
ZIPPER @ CF YKK POLY ZIPPER DOUBLE ZIPPER PULL - 3/4" WIDE	PANTONE 19-4006 TN BLACK	PANTONE BRIGHTS 18-4245 TN ELECTRIC BLUE	PANTONE BRIGHTS 16-1650 TN DIVA PINK	PANTONE BRIGHTS 18-3940 TN SIMPLY PURPLE



STYLE #: AJ-1006

DATE:

Front Details.

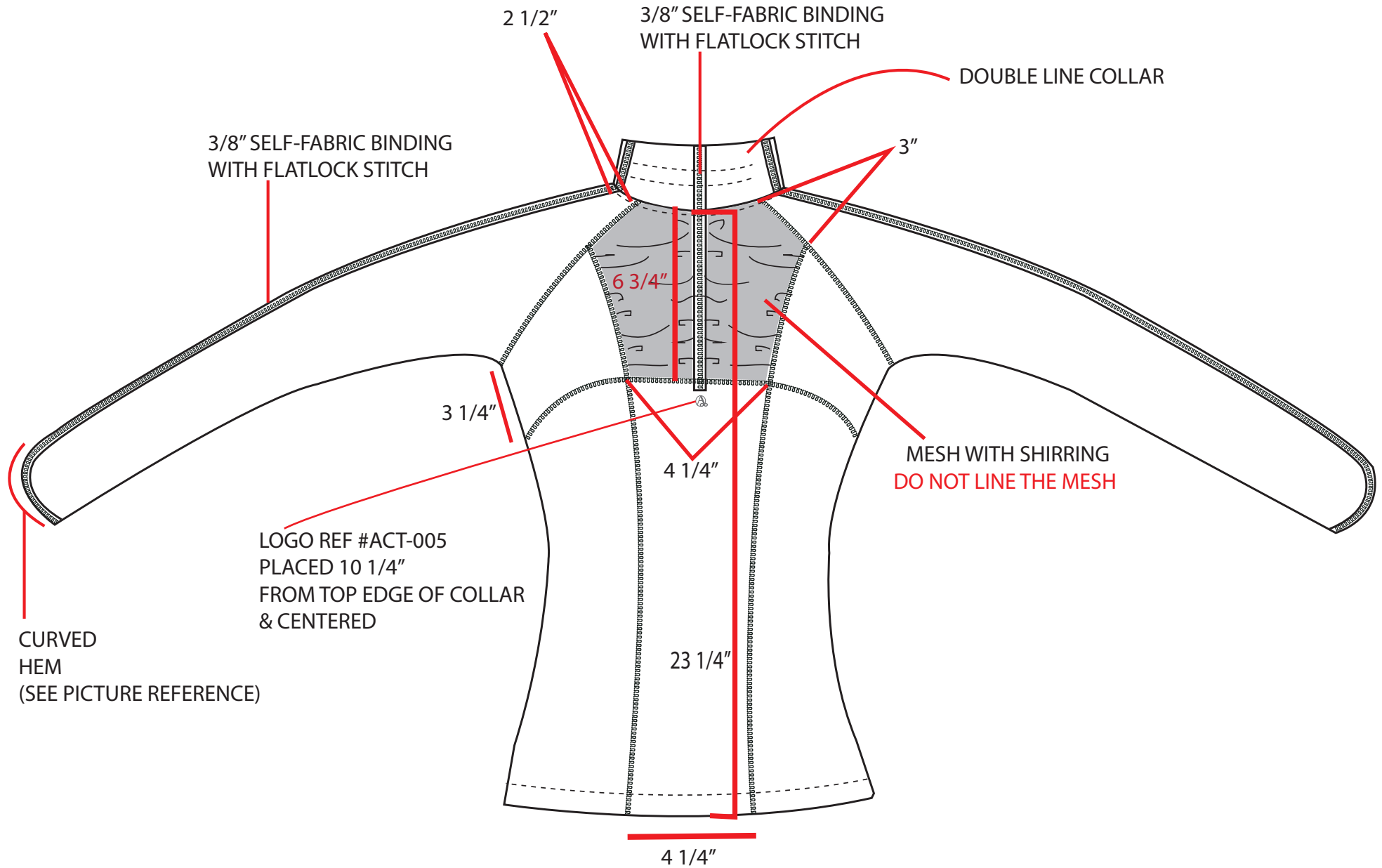




STYLE #: AJ-1006

DATE:

Back Details.





STYLE #: AJ-1006

DATE:

Picture Reference Page

VIEWS OF SHIRRING FROM FRONT OF GARMENT



INSIDE VIEW OF SHIRRING

3/8" ELASTIC IS PLACED IN BETWEEN SEAMS
TO CREATE SHIRRING



STYLE #: AJ-1006

DATE:

Picture Reference Page





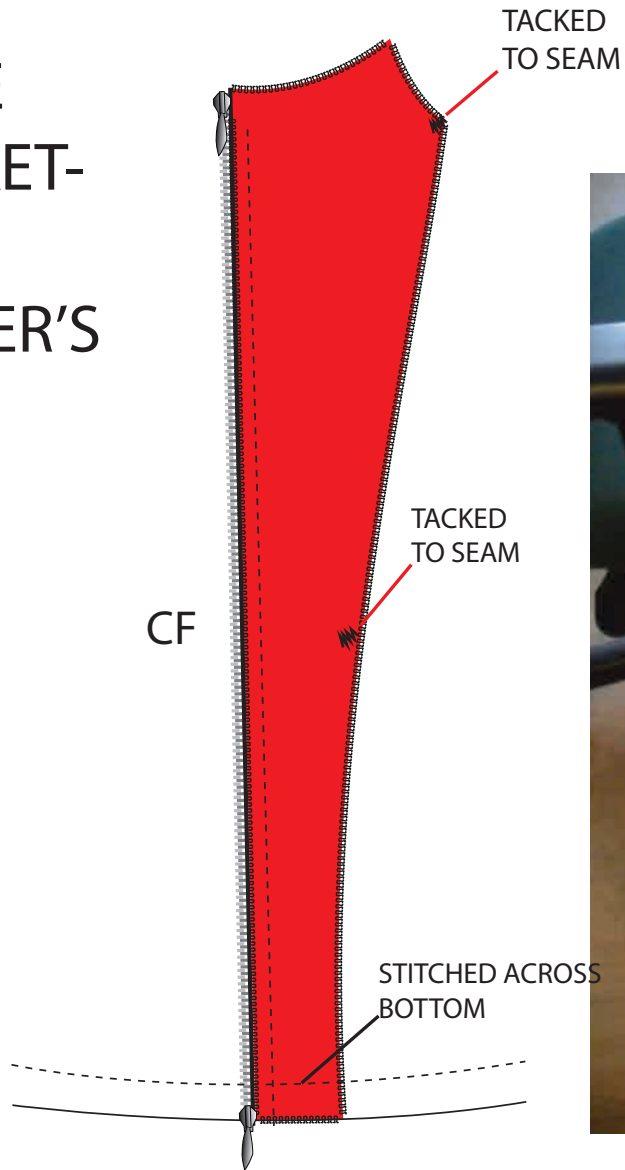
STYLE #: AJ-1006

DATE:

Picture Reference Page

INSIDE
PLACKET-

WEARER'S
RIGHT





STYLE #: AJ-1006

DATE:

Picture Reference Page

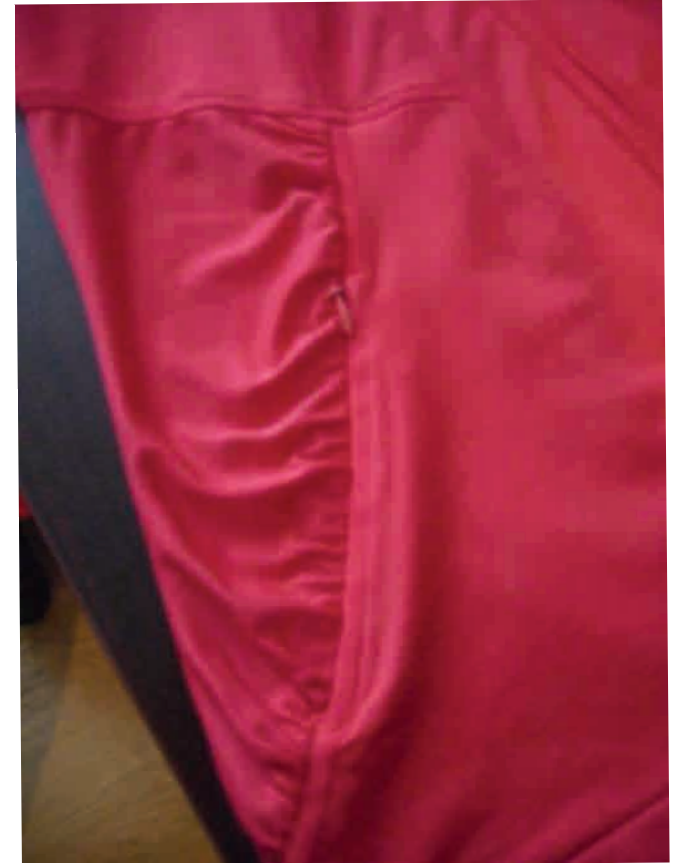




STYLE #: AJ-1006

DATE:

Picture Reference Page





STYLE #: AJ-1006

DATE:

Picture Reference Page

