



COUNTY LINE

ALACHUA COUNTY EMPLOYEE NEWSLETTER

JANUARY 2008

Feature News

- 2 Ashley Day
- 3 EZ Stub Purchasing Dept.
- 4 Microsoft Minute
- 5 Andrea Stokes Wear RED Day
- 6 Golden Ruler
- 7 Milestone New Employees
- 8 Elaine West
- 9 Training Schedule
- 10 Volunteer opportunity
- 11 Barracuda Spam Firewall

County Line is produced by the Alachua County Manager's Communications Office

Mark Sexton
Communications Coordinator

Latoya Gainey
Executive Staff Assistant

Mike Fara
Public Information Specialist

Takumi Sullivan
Graphic Designer
County Line Design/Production

Alan Yeatter
Production Coordinator

Shelley Samec
Production Technician

Gainesville Connects with Nicaragua

In the fight against world poverty, Asia and Africa tend to dominate the headlines.

However, poverty exists in our own hemisphere as well. For several years now, a group of Gainesville residents has been making the trek to the Central American nation of Nicaragua to make life just a little bit better for that country's poor.

This past November, Billy Martinez of ITS made his fourth trip in two years to Nicaragua. Martinez and his

group returned once again to the Santa Patricia refugee camp in Chinandega province. This camp houses nearly 500 residents who had fled the mudslides of Hurricane Mitch in 1998. Many of their homes were destroyed and they had to start over.

While at the camp, the Gainesville contingent conducted a series of interviews with the residents to learn how best they could be helped. When asked what their greatest wish was, most residents pointed up — "I need a new roof." Many of the houses in the camp are little better than tents. Most have earthen floors and leaky tin roofs.

With interview notes in hand, the group returned to Gainesville with a mission. The planning has already begun to get roofing supplies and tools to Nicaragua, and then in early 2008 these Gainesville goodwill ambassadors will return to Santa Patricia to make good on their promise of new roofs.



Billy with his little Nicaraguan friends

- By Steve Linton-Smith, ITS

Microsoft Minute

Are you tired of squinting your eyes to read e-mails written in small fonts? Can't stand those crazy backgrounds? With Outlook you can specify what font and font size you want to read ALL your e-mails – regardless of how the sender composed the e-mail. You can even disable all stationary backgrounds.

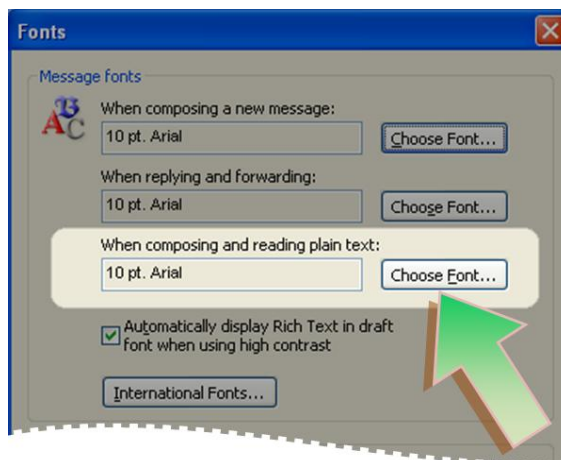
STEP 1: Read Mail in Plain Text

- Go to **TOOLS > OPTIONS > E-MAIL OPTIONS**
- Place a check next to **READ ALL STANDARD MAIL IN PLAIN TEXT**

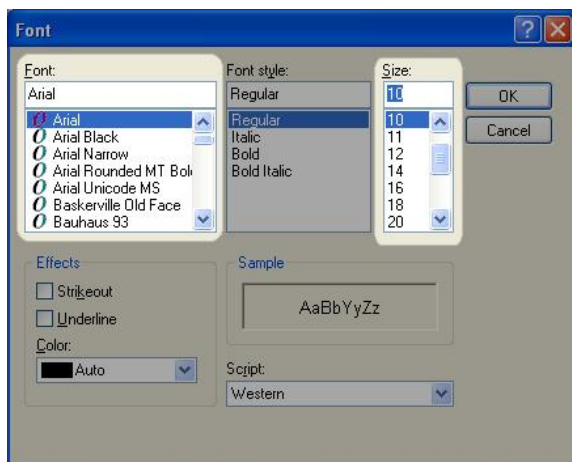


STEP 2: Set Your Plain Text Font

- Go to **TOOLS > OPTIONS > MAIL FORMAT > FONTS**
- Click the **CHOOSE FONT** button next to **WHEN COMPOSING AND READING PLAIN TEXT**

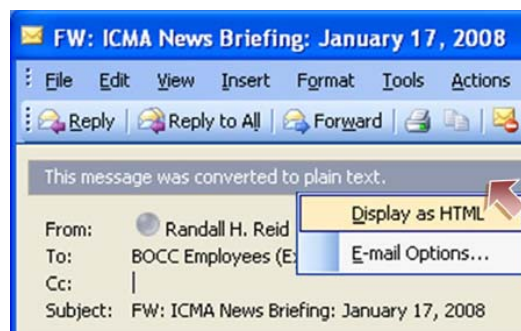


STEP 3: Select Desired Font & Font Size



HTML MESSAGES

Each incoming messages will be converted to Plain Text. However, some HTML messages will not display well in Plain Text. Therefore, any message can be converted back to its original format by clicking on the notification bar across the top of the message.



- By Steve Linton-Smith

For information on upcoming computer training classes, visit <http://boccteams/sites/tta>.