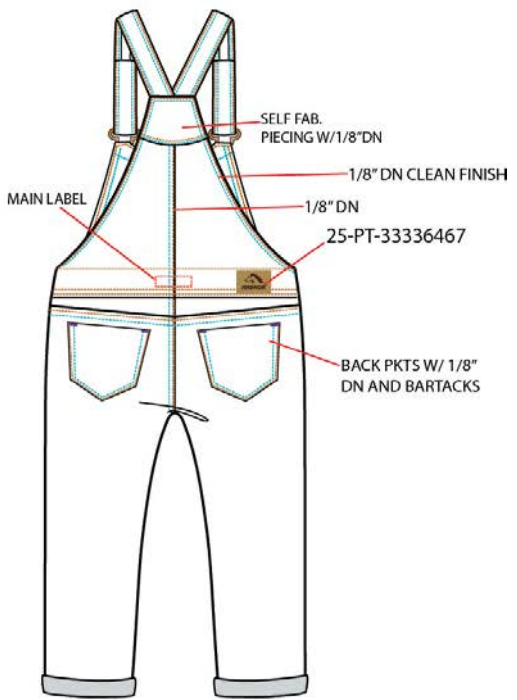
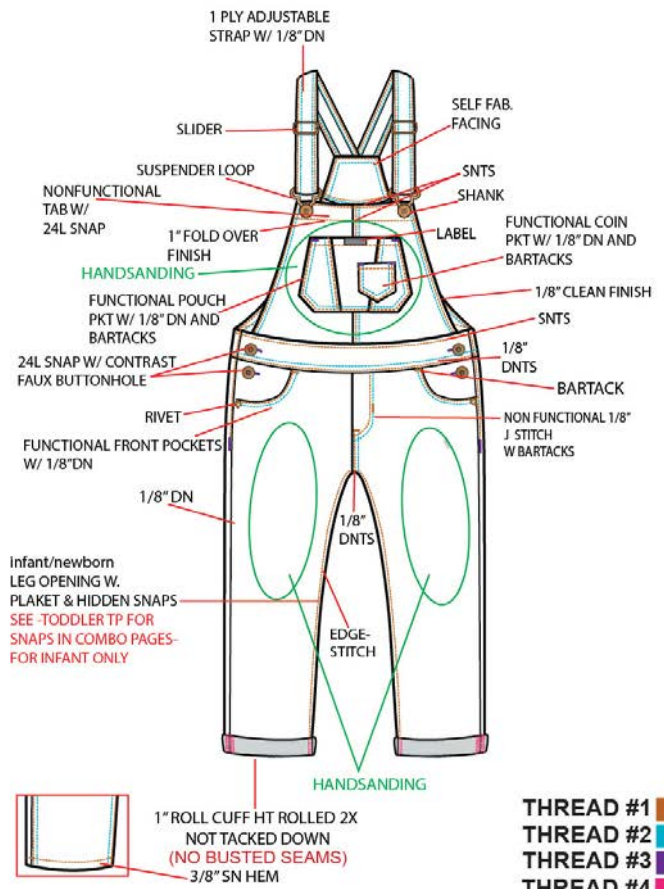




Season	F_16	Fall 2016	Division	24	Infant Toddlers	Product Type	27	Overall
Style No	7040		Customer	WMT	Wal*Mart Stores	Line Group	2	ROUND 2
Proto No	JT 19011		Description	BASIC OVERALL		Designer		
Ref No			Factory	001	HK- Office	Created By:	JEANS-WEAR\soderlund	

General Information Model with Belt Order Sent By Date Sent 10/2/2015

BASIC OVERALL
JT 19011



- THREAD #1**
THREAD #2
THREAD #3 TKT 50
THREAD #4 TKT 120

Proto General Comments

4/8/16: ADDED THE DISCLAIMER TAG PLACEMENT TO PROTO CONSTRUCTION DETAILS
 =====
 3/16/16: ADDED THE WALMART.COM FOLDING METHOD
 =====
 2/25/16: REMOVED THE LINE ABOUT THE BELTLOOP AND BARTACK FROM THE SKETCH
 =====
 2/1/16: ADDED PAPER TRIMS FOR BULK
 =====
 1/22/16: CO#2: 24-LB-33338748 LABEL UPDATED TO "D"
 =====
 12/30/15: REQUESTING 3PCS EACH COMBO 2 & 3 FOR AFM DUE IN NY 1/12/13
 =====
 12/29/15: REQUESTING 4 PCS EACH COMBOS 2 AND 3 FOR AFM
 =====
 4 PCS EACH SIZE 3T DUE IN NY 1/12/15
 =====
 11/11/15: UPDATED COMBO 2 AND ADDED IN COMBO 3
 =====
 CO#2: CHANGED TOP STITCH COLOR & LABEL 33338748 COLOR CHANGED TO COMBO D
 =====
 CO#3: BASE WASH AS JZW W63 ON DY53 WITH DARK ENZYME + POTASSIUM SPRAY @ FRT BIB AND LEGS ONLY+H/S @ FRT BIE AND LEGS ONLY

Proto Combo Sketch Revised

Size Spec No

OVRL08	JT 19011
--------	----------

Size Range Name

2T to 5T

Proto Description: **BASIC OVERALL** Requested Date: **1/12/2015** Fabric Type: **Stretch Woven**


Fabric Details
 Mill Ref No: **DY53** Description: **3/1 twill denim** Supplier ID: **145** Weight: **9.5oz**
 Content: **65%CTN; 19%POLY; 15% Vis1%SPANX** Construction: **91X58**

Wash Details
 Wash Code: **005** Fabric Code: **9N** Wash Reference Number: **S17 _9N** Base Wash: **Medium enzyme**

Sample Sizes Required
 3T

Number of Pcs by Size
 4

Requested Quantity
4


BLUE DENIM
 Color Abbreviation: **BLUE** Color QRS ID:



Processes	Process Position
POTASSIUM SPRAY	FRONT BIB AND LEGS ONLY
HAND SANDING	FRONT BIB AND LEGS ONLY

Trim Type	Div	Abvr	Ref No	Comments	Description	OK	Date Apprvd
Label	25	LB	33339187	COMBO A	WOVEN MAIN LABEL	c	
Pocketing	24	PK	T/C SEMIBLCH	TC SEMI BLEACH	POCKETING	c	
Thread	24	TH	TKT 24 THREAD	C8634	TKT 24 THREAD 1	c	
Thread	24	TH	TKT 24 THREAD	C8250	TKT 24 THREAD 2	c	
Thread	24	TH	THRD 3	C3357	TKT 50 THREAD 3	c	
Thread	25	TH	THREAD 4	C3357	TKT 120	c	
Button	25	BT	33339064	27L GY-13 MATT NICKEL- 2PCS	LOGO SHANK W. CENTER HEART	c	
Snap	24	SN	33339064	24L GY-13 MATT NICKEL- 4PCS	LOGO SNAP W. CENTER HEART	c	
Rivet	24	RV	33339065	9MM GY-13 MATT NICKEL- 2PCS	LOGO RIVET W. HEART	c	
Other	24	OT	33338969	1 1/4" GY-13 MATT NICKEL- 2PCS	AK-9144 METAL SUSPENDER HOOK	c	
Other	24	OT	33338970	1 1/4" GY-13 MATT NICKEL- 2PCS	AK-9352 METAL SUSPENDER SLIDER	c	
Patch	25	PT	33336467	COMBO A	JORDACHE PATCH	c	
Label	24	LB	33338748	COMBO D	WOVEN LOGO PKCT LABEL	c	
Label	25	LB	33336367	COMBO A	COO & SIZE LABEL	c	
Care-Label	25	CL	33336411	COMBO A	PRINTED SATIN CARE LABEL	c	
Label	25	LB	SPT 489	STYLE LABEL	STYLE NUMBER LABEL	c	
Hang-Tag	25	HT	33336391	COMBO A	GIRLS HANG TAG W RACK ID	c	

General Comments

DY53 WITH MED ENZYME + POTASSIUM SPRAY (FRONT BIB AND LEGS ONLY) +HANDSANDING (FRONT BIB AND LEGS ONLY)

2/1/16: ADDED PAPER TRIMS FOR BULK
 =====
 1/22/16:24-LB-33338748 LABEL UPDATED TO "D"
 =====
 BASE WASH AS JZ 19011 CO#2 DATED 11/23/15 ON DY53 WITH MED ENZYME + POTASSIUM SPRAY @ FRT BIB AND LEGS ONLY+H/S @ FRT BIB AND LEGS ONLY

11/11/15: CHANGED TOP STITCH COLOR & LABEL 33338748 COLOR CHANGED TO COMBO D

Combo Received Date Rec Wash Approved Date Approved Combo Selected JEANS-WEAR\jsoderlund Date Selected Combo Approved Date Approved

Proto Description	Requested Date	Fabric Type
BASIC OVERALL	1/12/2015	Stretch Woven

Fabric Details

Mill Ref No	Description	Supplier ID	Weight
DY53	3/1 twill denim	145	9.5oz
Content		Construction	
65%CTN; 19%POLY;15% Vis1%SPANX		91X58	

Wash Details

Wash Code	Fabric Code	Wash Reference Number	Base Wash
010	J6	S17 _J6	Dark enzyme

Sample Sizes Required


3T

Number of Pcs by Size

4

Requested Quantity

4



BLUE DENIM DK ENZ

Color Abbreviation **DKWS** Color QRS ID



Processes	Process Position
POTASSIUM SPRAY	FRONT BIB AND LEGS ONLY
HAND SANDING	FRONT BIB AND LEGS ONLY

Trim Type	Div	Abvr	Ref No	Comments	Description	OK	Date Apprvd
Label	25	LB	33339187	COMBO A	WOVEN MAIN LABEL	c	
Pocketing	24	PK	POCKETING	TC SEMI BLEACH	POCKETING	c	
Thread	24	TH	TKT 24 THREAD	C8660	TKT 24 THREAD 1	c	
Thread	24	TH	TKT 24 THREAD	C8356	TKT 24 THREAD 2	c	
Thread	24	TH	THRD 3	C3459	TKT 50 THREAD 3	c	
Thread	25	TH	THREAD 4	C3459	TKT 120	c	
Button	25	BT	33339064	27L GY-49 ACMN- 2PCS	LOGO SHANK W. CENTER HEART	c	
Snap	24	SN	33339064	24L GY-49 ACMN- 4PCS	LOGO SNAP W. CENTER HEART	c	
Rivet	24	RV	33339065	9MM GY-49 ACMN- 2PCS	LOGO RIVET W. HEART	c	
Other	24	OT	33338969	1 1/4" GY-49 ACMN- 2PCS	AK-9144 METAL SUSPENDER HOOK	c	
Other	24	OT	33338970	1 1/4" GY-49 ACMN- 2PCS	AK-9352 METAL SUSPENDER SLIDER	c	
Patch	25	PT	33336467	COMBO A	JORDACHE PATCH	c	
Label	24	LB	33338748	COMBO B	WOVEN LOGO PKCT LABEL	c	
Label	25	LB	33336367	COMBO A	COO & SIZE LABEL	c	
Care-Label	25	CL	33336411	COMBO A	PRINTED SATIN CARE LABEL	c	
Label	25	LB	SPT 489	STYLE LABEL	STYLE NUMBER LABEL	c	
Hang-Tag	25	HT	33336391	COMBO A	GIRLS HANG TAG W RACK ID	c	
Hang-Tag	25	HT	GENA3001	GENA30011 WASH DISCLAIMER TAG	GENA30011 WASH DISCLAIMER	c	

General Comments

DY53 DARK ENZYME POTASSIUM SPRAY (FRONT BIB & LEGS)+ HANDSANDING (FRONT BIB & LEGS)

2/1/16: ADDED PAPER TRIMS FOR BULK
=====

BASE WASH AS JZ 19011 CO#3 DATED 11/23/15 ON DY53 WITH DARK ENZYME + POTASSIUM SPRAY @ FRT BIB AND LEGS ONLY+H/S @ FRT BIB AND LEGS ONLY

Combo Received Date Rec Wash Approved Date Approved Combo Selected JEANS-WEAR\jsoderlund Date Selected Combo Approved Date Approved

Wash Reference for Combo No 02

Wash Ref No

_9N

ID

S17

Front



Back



Detail 1

Detail 2



Detail 3



Comments

DY53 WITH MEDIUM ENZYME + POTASSIUM SPRAY +HANDSANDING
DATED: 06-JAN-2016

Wash Reference for Combo No 03

Wash Ref No

_J6

ID

S17

Front



Back



Detail 1



Detail 2



Detail 3



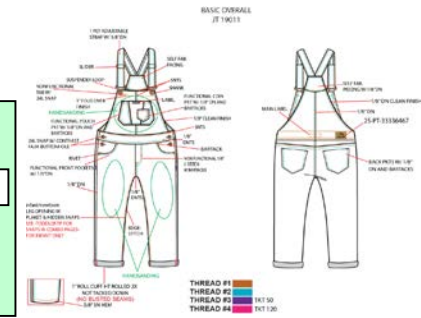
Comments

DY53 WITH DARK ENZYME + POTASSIUM SPRAY +HANDSANDING
DATED: 06-JAN-2016

Fit Sample Evaluation

01 for Proto Number

JT 19011



Style No 7040	Reference	Size Sample	HT Date	Received	Factory HK- Office
Division Infant Toddlers	Season Fall 2016	Product Type Overall		Size Spec No OVL08 JT 19011	

Size Range Name 2T to 5T **BASESIZE** 3T

Additional Comments

P O M	P O M Description	3T	Act	Var	REV	+ or -
BB098	Front Bib Width @ Top	5 3/4	5 3/4	0		
BB101	Bib length at CF	6 1/2	6 3/8	- 1/8		
PS402	Front pkt width @ top	4	4 1/8	1/8		
PS405	Front pkt length @ ctr	3 1/4	3 1/4	0		
PS401	Front pkt length @ side	2 1/2	2 1/2	0		
PS416	Front Pkt Width @ widest	5	5	0		
PS403	Front pkt width @ bottom	3 3/4	3 3/4	0		
PP230	Frt pkt plcmnt fm top edge	1 3/8	1 3/8	0		
SP123	Small pocket width	1 1/2	1 5/8	1/8		
SP124J	Small pocket length @ ctr	1 1/2	1 1/2	0		
BB099-J	Back Bib Width @ Top	2 3/4	2 3/4	0	2 3/4	
TB403	Back tab length @ side edge	1 1/8	1 1/4	1/8		
TB402	Back tab width @ widest	3 1/4	3 1/4	0		
TB401	Back tab length @ ctr	2 1/4	2 1/4	0		
BB027	Back bib length at CB to top of WB	6 1/2	6 3/8	- 1/8		
ST113	Strap Length from V-point with adjustment	9	9	0		
SH205	Strap adjustment amount	2	2	0		
ST102	Strap width	1 1/4	1 1/4	0		
PP900						
WB121	Waist Circ. at Top Edge	22 1/2	23	1/2		
WB109	Waistband height	1 1/4	1 1/4	0		

1/26/2016 - Fit is approved w/corrections

1st Fit H.T. date: 1-3-16
Fabric: DY 53 in co# 3 Dk. enzyme 15%

FIT: Overall fit is loose on pant, Bk yoke looks too flat at CB. Pls make below corrections for bulk.

SPEC & SPEC REVISIONS:

1. Bk tab width at top is 1/4" too big, s/b 2 1/2".
2. Uneven bk tab on both side. Wr's right is 1/8" too big, s/b both 1 1/8". Pls improve sewing.
3. Waist at top is 1/2" too big, s/b 22 1/2".
4. Low hip @ 2" up is 7/8" too big, s/b 24 1/2".
5. Thigh @ 1" is 1/2" too big, s/b 14 1/4".
6. Bk yoke looks too flat at CB and puckering. Increase bk yoke to 1 1/4" i/o 1 1/8". Pls make bk yok more angle at CB.

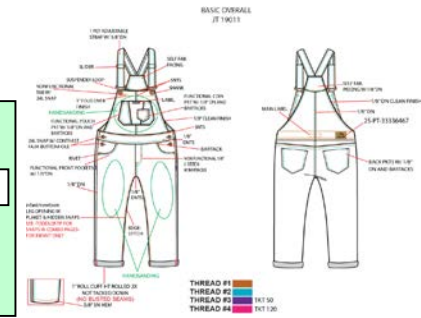
*** Please bring all points to spec and submit 1 pc size 3T REF sample in co# 2 Med. enzyme along with pattern ASAP.
Thanks, Joanna

3/21/2016
Revise back bib/tab width at top to 2 3/4" i/o 2 1/2" for more angle at strap.
Thanks, Joanna

Fit Sample Evaluation

01 for Proto Number

JT 19011



Style No 7040	Reference	Size Sample	HT Date	Received	Factory HK- Office
Division Infant Toddlers	Season Fall 2016	Product Type Overall		Size Spec No OVL08 JT 19011	

Size Range Name 2T to 5T **BASESIZE** 3T

Additional Comments

P O M	P O M Description	3T	Act	Var	REV	+ or -
RF100	Front rise - from top of w/band	7 3/8	7 3/8	0		
RB100	Back rise - from top w/band	10	10 1/8	1/8		
I24	Hip from crotch seam	2	2	0		
I22	Full hip - measuring hip in a v	24 1/2	25 3/8	7/8		
TH100	Thigh 1" below crotch point	14 1/4	14 3/4	1/2		
KP100	Knee placement from crotch point	6	6	0		
KN100	Knee circ.	11 1/4	11 1/4	0		
LO100	Leg opening	9 1/4	9	- 1/4		
IN122	Inseam length - rolled up	13	13	0		
IN123	Inseam length - unrolled (total)	15	15	0		
CH201	Cuff Height (rolled twice)	1	1	0		
HH011	Hem height	3/8	3/8	0		
FF100	Front fly width	1 1/8	1 1/8	0		
FF110	Front Fly Length below WB	3	3	0		
O29	Pocket opening width	2 5/8	2 3/4	1/8		
O30	Pocket opening length	1 3/4	1 3/4	0		
PB201	Front pkt bag length- Near CF	4	4	0		
YK101	Yoke ht @ CB (yoke over body)	1 1/4	1 1/8	- 1/8	1 1/4	
YK200	Yoke ht @ SS (yoke over body)	3/8	3/8	0		
PS100	Back pkt width @ top	3 3/4	3 3/4	0		
PS101	Back pkt width @ bottom	3 1/8	3 1/8	0		

1/26/2016 - Fit is approved w/corrections

1st Fit H.T. date: 1-3-16
Fabric: DY 53 in co# 3 Dk. enzyme 15%

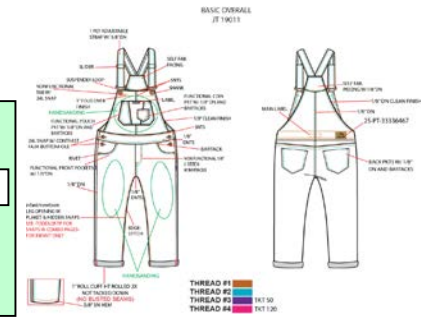
FIT: Overall fit is loose on pant, Bk yoke looks too flat at CB. Pls make below corrections for bulk.

SPEC & SPEC REVISIONS:

1. Bk tab width at top is 1/4" too big, s/b 2 1/2".
2. Uneven bk tab on both side. Wr's right is 1/8" too big, s/b both 1 1/8". Pls improve sewing.
3. Waist at top is 1/2" too big, s/b 22 1/2".
4. Low hip @ 2" up is 7/8" too big, s/b 24 1/2".
5. Thigh @ 1" is 1/2" too big, s/b 14 1/4".
6. Bk yoke looks too flat at CB and puckering. Increase bk yoke to 1 1/4" i/o 1 1/8". Pls make bk yoke more angle at CB.

*** Please bring all points to spec and submit 1 pc size 3T REF sample in co# 2 Med. enzyme along with pattern ASAP.
Thanks, Joanna

3/21/2016
Revise back bib/tab width at top to 2 3/4" i/o 2 1/2" for more angle at strap.
Thanks, Joanna



Style No 7040	Reference	Size Sample	HT Date	Received	Factory HK- Office
Division Infant Toddlers	Season Fall 2016	Product Type Overall		Size Spec No OVRL08 JT 19011	

Size Range Name: 2T to 5T BASESIZE: 3T

Additional Comments

P O M	P O M Description	3T	Act	Var	REV	+ or -
PS102	Back pkt length @ center	3 1/2	3 1/2	0		
PS103	Back pkt length @ side	2 3/4	2 3/4	0		
PP100	Bk pkt position blw yoke near CB	3/4	3/4	0		
PP101	Bk pkt position blw yoke near SS	1	1	0		
O09	Back pocket position from back rise	7/8	1	1/8		
SS031	Side seam stay stitch length-blw WB to the end	3 1/2	3 1/2	0		

1/26/2016 - Fit is approved w/corrections

1st Fit H.T. date: 1-3-16
Fabric: DY 53 in co# 3 Dk. enzyme 15%

FIT: Overall fit is loose on pant, Bk yoke looks too flat at CB. Pls make below corrections for bulk.

SPEC & SPEC REVISIONS:

1. Bk tab width at top is 1/4" too big, s/b 2 1/2".
2. Uneven bk tab on both side. Wr's right is 1/8" too big, s/b both 1 1/8". Pls improve sewing.
3. Waist at top is 1/2" too big, s/b 22 1/2".
4. Low hip @ 2" up is 7/8" too big, s/b 24 1/2".
5. Thigh @ 1" is 1/2" too big, s/b 14 1/4".
6. Bk yoke looks too flat at CB and puckering. Increase bk yoke to 1 1/4" i/o 1 1/8". Pls make bk yoke more angle at CB.

*** Please bring all points to spec and submit 1 pc size 3T REF sample in co# 2 Med. enzyme along with pattern ASAP.
Thanks, Joanna

3/21/2016
Revise back bib/tab width at top to 2 3/4" i/o 2 1/2" for more angle at strap.
Thanks, Joanna

Style No

7040

Size Spec No

OVRL08

HT Date

Reference No



Uneven bk tab on both side.
Pls improve sewing.

Bk yoke looks too flat at CB and puckering. Pls make bk yoke more angle at CB and improve sewing.

JT-19011 Overall 1st Fit 1-25-2016

Season	F_16	Fall 2016	Division	24	Infant Toddlers	Product Type	27	Overall
Style No	7040		Customer	WM	Wal*Mart Stores	Line Group	2	ROUND 2
Proto No	JT 19011		Description	BASIC OVERALL		Designer		
Ref No			Factory	001	HK- Office	Created By:	JEANS-WEAR\jsoderlund	

Construction Details Model with Belt Order Sent By Date Sent



SKIRTALL MAIN LABEL POSITIONING WITH COO/SIZE LABEL IN WAISTBAND



BEFORE WASH, CENTER WOVEN MAIN LABEL @ CB OF WAISTBAND.
 MAIN LABEL WILL THEN BE SEWN DOWN ON ALL 4 SIDES.
 COO/SIZE LABEL WILL BE SEWN INTO THE WB CENTERED BELOW WOVEN MAIN LABEL.
 MAIN LABEL THREAD WILL BE DTM TO MATCH LABEL GROUND

BEFORE WASH, CENTER WOVEN MAIN LABEL @ CB OF WB. MAIN LABEL WILL THEN BE SEWN DOWN ON ALL 4 SIDES. COO/SIZE LABEL WILL BE SEWN INTO THE WB CENTERED BELOW WOVEN MAIN LABEL. MAIN LABEL THREAD WILL BE DTM TO

25-CL-33336411 PRINTED SATIN CARE LABEL:
 SEW INTO WEARER'S LEFT INSIDE SIDE SEAM 2" BELOW WAISTBAND



Care Label sewn at wearer's left inside side seam. 2" below waistband

Season	F_16	Fall 2016	Division	24	Infant Toddlers	Product Type	27	Overall
Style No	7040		Customer	WM	Wal*Mart Stores	Line Group	2	ROUND 2
Proto No	JT 19011		Description	BASIC OVERALL		Designer		
Ref No			Factory	001	HK- Office	Created By:	JEANS-WEAR\jsoderlund	



Construction Details

Model with Belt Order Sent By Date Sent 10/2/2015

STYLE # LABEL PLACEMENT:
THE STYLE LABEL AND CARE LABEL ARE ATTACHED TOGETHER INSIDE THE WEARER'S LEFT SIDE SEAM
THE CARE LABEL IS ON TOP OF THE STYLE# LABEL



PAPER PATCH APPLIED TO THE WEARER'S BACK WB 1/2" TO THE LEFT OF THE BACK BELTLOOP CENTERED BETWEEN THE TOP & BOTTOM WB STITCHES



1. Sewing the patch on the wb cutting.
2. Patch sew 4 side on the wb cutting.
3. Sewing the plastic covered on top of the patch.
4. Finished sewing the plastic covered on top of patch.
5. Sewing the wb to the pants panel, the cutting is go through the sawing machine.
6. Finished the patch attached on the wb
7. After garment process washed, then tear off the top plastic covered and remove the stitching which for attached the top plastic covered

PAPER PATCH APPLIED TO WEAR'S BACK WB 1/2" TO THE LEFT OF THE BACK BELTLOOP CENTERED BETWEEN THE TOP & BOTTOM WB STITCHES.

Season	F_16	Fall 2016	Division	24	Infant Toddlers	Product Type	27	Overall
Style No	7040		Customer	WM	Wal*Mart Stores	Line Group	2	ROUND 2
Proto No	JT 19011		Description	BASIC OVERALL		Designer		
Ref No			Factory	001	HK- Office	Created By:	JEANS-WEAR\jsoderlund	

Construction Details Model with Belt Order Sent By Date Sent



25-PT-33336467
BEFORE WASH



IF INSTRUCTED SPECIFICALLY TO APPLY BEFORE WASH:
APPLY BACK WAISTBAND PATCH BEFORE WASH. SEW ALL 4 SIDES W/
SINGLE NEEDLE LOCKSTITCH. UNLESS INSTRUCTED SPECIFICALLY TO
FIX AFTER WASH.

IF INSTRUCTED SPECIFICALLY TO APPLY BEFORE WASH: APPLY BACK WAISTBAND
PATCH BEFORE WASH. SEW ALL 4 SIDES W/ SINGLE NEEDLE LOCKSTICH. UNLESS
INSTRUCTED SPECIFICALLY TO FIX AFTER WASH

25-PT-33336467
AFTER WASH



IF INSTRUCTED SPECIFICALLY TO FIX AFTER WASH:
SEW TOP AND BOTTOM ONLY AFTER WASH, BEFORE ELASTIC INSERT.
DO NOT TRAP ELASTIC. BE SURE THREAD SHOWING ON OUTSIDE
OF WAISTBAND IS DTM GROUND COLOR AS SPECIFIED IN T/P.

IF INSTRUCTED SPECIFICALLY TO FIX AFTER WASH: SEW TOP AND BOTTOM ONLY
AFTER WASH, BEFORE ELASTIC INSERT. DO NOT TRAP ELASTIC. BE SURE THREAD
SHOWING ON OUTSIDE OF WAISTBAND IS DTM GROUND COLOR AS SPECIFIED IN

Season **F_16** Fall 2016
Style No **7040**
Proto No **JT 19011**
Ref No

Division **24** Infant Toddlers
Customer **WM** Wal*Mart Stores
Description **BASIC OVERALL**
Factory **001** HK- Office

Product Type **27** Overall
Line Group **2** ROUND 2
Designer
Created By: **JEANS-WEAR\jsoderlund**

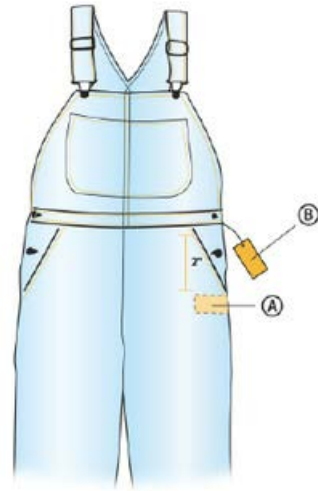


Construction Details

Model with Belt

Order Sent By

Date Sent **10/2/2015**



A_LOOP LABEL – ALL-INCLUSIVE:

Sew into wearer's left inseam 2" below waistband

B_HANTAG:

Swift-tack at wearer's left waistband.

CARE LABEL SEW INTO WEARER'S LEFT INSEAM 2" BELOW WAISTBAND. PLACE HANGTAG AT WEARER'S LEFT BELOW WAISTBAND W/ 3" CLEAR SWIFT TACK.

GENA30011 DISCLAIMER TAG:
ATTACHED TO THE WEARER'S RIGHT
BETWEEN SIDE SEAM AND WAISTBAND
WITH 3" SWIFT TACK



GENA30011 DYE PROCESS OR GENA 30029 UNIQUE PROCESS TAG PLACEMENT
IF MULTIPLE DISCLAIMERS, GENA30011 DISCLAIMER SHOULD BE IN FRONT OF ALL OTHER DISCLAIMER TAGS

Season **F_16** Fall 2016

Division **24** Infant Toddlers

Product Type **27** Overall



Style No **7040**

Customer **WM** Wal*Mart Stores

Line Group **2** ROUND 2

Proto No **JT 19011**

Description **BASIC OVERALL**

Designer

Ref No

Factory **001** HK- Office

Created By: **JEANS-WEAR\jsoderlund**

Construction Details

Model with Belt

Order Sent By

Date Sent **10/2/2015**

WALMART STANDARD

10 of 31

REF : WFM-10

FOLDING METHOD

HANGER PACKING FOR OVERALL

HALF FOLD (STEP 1-3)

- APPLIED FOR DIVISION 24 & 25 (AGE 4T / BELOW 4T).

TRIPLE FOLD (STEP 1-4)

- APPLIED FOR DIVISION 24 & 25 (AGE 4 / ABOVE 4) AND OTHERS DIVISION.

STEP 1



STEP 2



STEP 3

HALF FOLD AT CENTRE OF GARMENT



06 / 14 / 01

HALF FOLD: BELOW 4T STEP 1: PLACE ON HANGER & LAY GARMENT FLAT, FRONT DOWN STEP 2: HALF FOLD STEP 3: FOLD BIB SECTION BACKWARDS TO HEM, PARALELLE TO HEM.

WALMART STANDARD

10 of 31

REF : WFM-10

FOLDING METHOD

HANGER PACKING FOR OVERALL

HALF FOLD (STEP 1-3)

- APPLIED FOR DIVISION 24 & 25 (AGE 4T / BELOW 4T).

TRIPLE FOLD (STEP 1-4)

- APPLIED FOR DIVISION 24 & 25 (AGE 4 / ABOVE 4) AND OTHERS DIVISION.

STEP 1



STEP 2



STEP 3

HALF FOLD AT CENTRE OF GARMENT



STEP 4

FOLDED THE GARMENT AGAIN



06 / 14 / 01

TRIPLE FOLD: ABOVE 4T STEP 1: PLACE ON HANGER & LAY GARMENT FLAT, FRONT DOWN STEP 2: HALF FOLD STEP 3: FOLD BIB SECTION BACKWARDS TO HEM, PARALELLE TO HEM. STEP 4: FOLD GARMENT AGAIN.

Season **F_16** Fall 2016
Style No **7040**
Proto No **JT 19011**
Ref No

Division **24** Infant Toddlers
Customer **WM** Wal*Mart Stores
Description **BASIC OVERALL**
Factory **001** HK- Office

Product Type **27** Overall
Line Group **2** ROUND 2
Designer
Created By: **JEANS-WEAR\jsoderlund**



Construction Details

Model with Belt Order Sent By Date Sent **10/2/2015**

**FOLDING METHOD
DOT.COM PACKAGING FOR OVERALL**

HALF FOLD - APPLIED FOR INFANT/TODDLER GIRLS

STEP 1



LAY GARMENT FLAT

STEP 2



PLACE GARMENT FACE DOWN

STEP 3



HALF FOLD; FOLD BIB SECTION BACKWARDS TO HEM, PARALLEL TO HEM.

STEP 1: LAY GARMENT FLAT
STEP 2: PLACE GARMENT FACE DOWN
STEP 3: HALF FOLD; FOLD BIB SECTION BACKWARDS TO HEM, PARALLEL TO THE

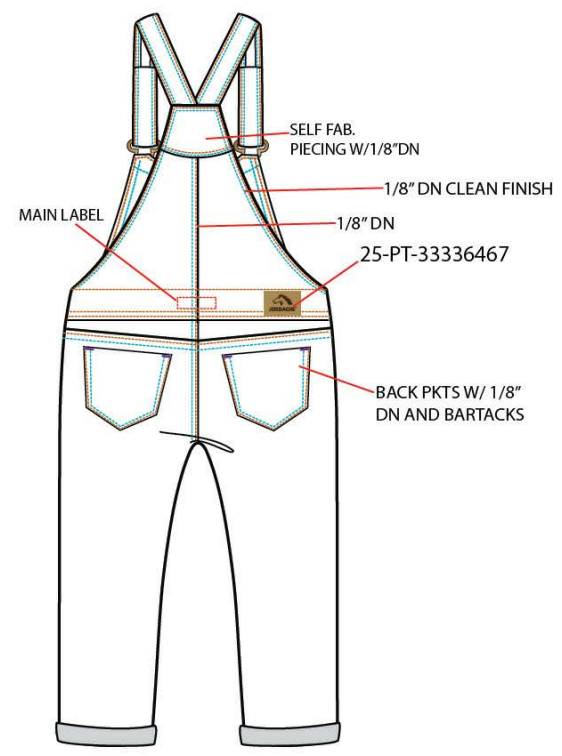
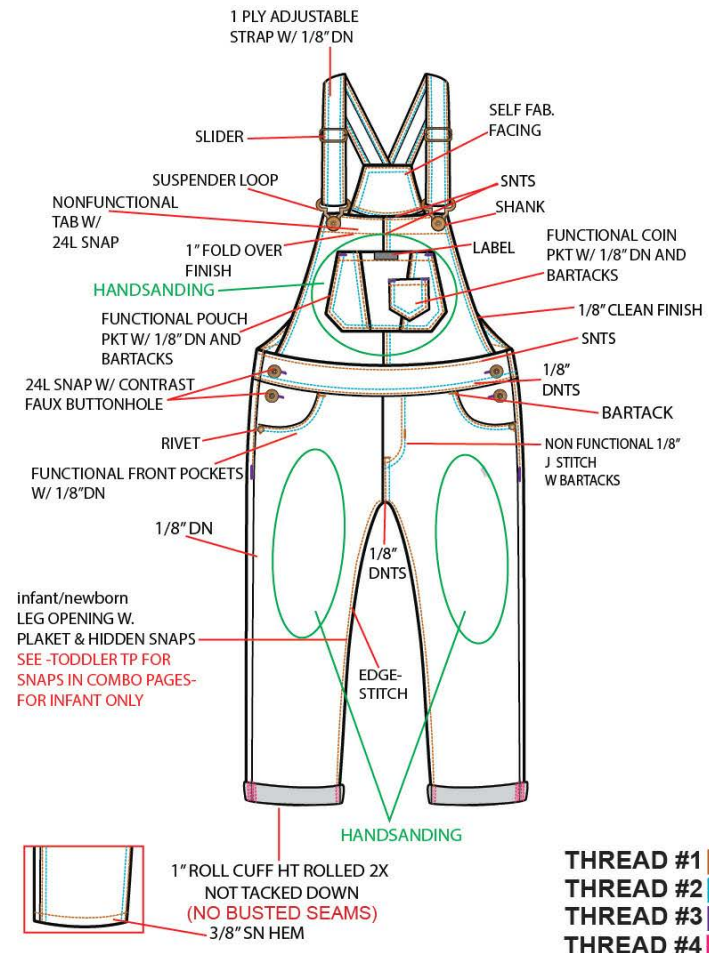
Season	F_16	Fall 2016	Division	24	Infant Toddlers	Product Type	27	Overall
Style No	7040		Customer	WM	Wal*Mart Stores	Line Group	2	ROUND 2
Proto No	JT 19011		Description	BASIC OVERALL		Designer		
Ref No			Factory	001	HK- Office	Created By:	JEANS-WEARjsoderlund	



Specific Construction Detail

Model with Belt Order Sent By Date Sent 10/2/2015

BASIC OVERALL
JT 19011





- THREAD #1
- THREAD #2
- THREAD #3 TKT 50
- THREAD #4 TKT 120

Season	F_16	Fall 2016	Division	24	Infant Toddlers	Product Type	27	Overall
Style No	7040		Customer	WM	Wal*Mart Stores	Line Group	2	ROUND 2
Proto No	JT 19011		Description	BASIC OVERALL		Designer		
Ref No			Factory	001	HK- Office	Created By:	JEANS-WEAR\jsoderlund	

Trim Display Card Model with Belt Order Sent By Date Sent




Trim Card 1 of 5

Trim Ref	Trim Type Description	Trim Image
33339064	Button	
33336411	Care-Label	
33336391	Hang-Tag	

Trim Group ID	Trim Group Description

General Trim Comments

Season	F_16	Fall 2016	Division	24	Infant Toddlers	Product Type	27	Overall
Style No	7040		Customer	WM	Wal*Mart Stores	Line Group	2	ROUND 2
Proto No	JT 19011		Description	BASIC OVERALL		Designer		
Ref No			Factory	001	HK- Office	Created By:	JEANS-WEAR\jsoderlund	



Trim Display Card Model with Belt Order Sent By Date Sent

Trim Card 2 of 5

Trim Ref	Trim Type Description	Trim Image
GENA3001	Hang-Tag	
33339187	Label	
33336367	Label	
33338748	Label	

Trim Group ID	Trim Group Description

General Trim Comments

Season	F_16	Fall 2016	Division	24	Infant Toddlers	Product Type	27	Overall
Style No	7040		Customer	WM	Wal*Mart Stores	Line Group	2	ROUND 2
Proto No	JT 19011		Description	BASIC OVERALL		Designer		
Ref No			Factory	001	HK- Office	Created By:	JEANS-WEAR\jsoderlund	

Trim Display Card Model with Belt Order Sent By Date Sent



Trim Card 3 of 5

Trim Ref	Trim Type Description	Trim Image
SPT 489	Label	
33338969	Other	
33338970	Other	
33336467	Patch	

Trim Group ID	Trim Group Description


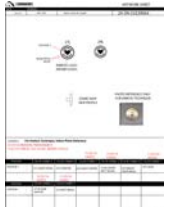
General Trim Comments

Season	F_16	Fall 2016	Division	24	Infant Toddlers	Product Type	27	Overall
Style No	7040		Customer	WM	Wal*Mart Stores	Line Group	2	ROUND 2
Proto No	JT 19011		Description	BASIC OVERALL		Designer		
Ref No			Factory	001	HK- Office	Created By:	JEANS-WEAR\jsoderlund	

Trim Display Card Model with Belt Order Sent By Date Sent



Trim Card 4 of 5

Trim Ref	Trim Type Description	Trim Image
T/C SEMIBLCH	Pocketing	
POCKETING	Pocketing	
33339065	Rivet	
33339064	Snap	

Trim Group ID	Trim Group Description


General Trim Comments

Season	F_16	Fall 2016	Division	24	Infant Toddlers	Product Type	27	Overall
Style No	7040		Customer	WM	Wal*Mart Stores	Line Group	2	ROUND 2
Proto No	JT 19011		Description	BASIC OVERALL		Designer		
Ref No			Factory	001	HK- Office	Created By:	JEANS-WEAR\jsoderlund	

Trim Display Card Model with Belt Order Sent By Date Sent



Trim Card 5 of 5

Trim Ref	Trim Type Description	Trim Image
TKT 24 THREAD 1	Thread	
TKT 24 THREAD 2	Thread	
THRD 3	Thread	
THREAD 4	Thread	

Trim Group ID	Trim Group Description

General Trim Comments