

**TRIPLE STACK  
DESTRUCTED WB LEGGING  
JZ 27733 C1 [REFRESH]**

**GIRLS**



<b>DIVISION   STYLE #:</b>	25	<b>FABRIC CODE   MAIN MATERIAL INFO:</b>	D4     TRIPLE STACK DESTRUCTED WB	<b>PROTO NUMBER:</b>	25-WU-JDG-0035
<b>DESCRIPTION:</b>	TRIPLE STACK DESTRUCTED WB	<b>SIZE RANGE:</b>	4, 5, 6, 6X, 7, <u>8</u> , 10, 12, 14, 16, 18	<b>DENIM COLOR COMBO:</b>	01-DARK ENZYME
<b>SEASON:</b>	2020 Fall	<b>BRAND:</b>	Jordache	<b>MAIN MATERIAL:</b>	M191010-R INDG BCI   JOR308   Cotton 92%,
<b>PRODUCT TYPE:</b>	Pant	<b>SUB DIVISION:</b>	Girls	<b>AKA:</b>	JZ 27733 C#1

**TRIPLE STACK DESTRUCTED WB LEGGING  
25-WU-JDG-0035**

\*REFERENCE  
JZ 27733



TRIPLE STACK DESTROYED  
WB LEGGING JZ 27733 C1  
[REFRESH]

# COLORWAY PAGE



<b>DIVISION   STYLE #:</b>	25	<b>FABRIC CODE   MAIN MATERIAL INFO:</b>	D4     TRIPLE STACK DESTROYED WB LEGGING	<b>PROTO NUMBER:</b>	25-WU-JDG-0035
<b>DESCRIPTION:</b>	TRIPLE STACK DESTROYED WB LEGGING	<b>SIZE RANGE:</b>	4, 5, 6, 6X, 7, <u>8</u> , 10, 12, 14, 16, 18	<b>DENIM COLOR COMBO:</b>	01-DARK ENZYME
<b>SEASON:</b>	2020 Fall	<b>BRAND:</b>	Jordache	<b>MAIN MATERIAL:</b>	M191010-R INDG BCI   JOR308   Cotton 92%, Polyester 6%,
<b>PRODUCT TYPE:</b>	Pant	<b>SUB DIVISION:</b>	Girls	<b>AKA:</b>	JZ 27733 C#1

[IMAGE]	[PRIMARY]	[COLOR NUMBER]	[COLOR NAME]
		1	DARK ENZYME

**TRIPLE STACK DESTROYED**  
**WB LEGGING JZ 27733 C1**  
**[REFRESH]**

# REVISION



<b>DIVISION   STYLE #:</b>	25	<b>FABRIC CODE   MAIN MATERIAL INFO:</b>	D4     TRIPLE STACK DESTROYED WB LEGGING	<b>PROTO NUMBER:</b>	25-WU-JDG-0035
<b>DESCRIPTION:</b>	TRIPLE STACK DESTROYED WB LEGGING	<b>SIZE RANGE:</b>	4, 5, 6, 6X, 7, <u>8</u> , 10, 12, 14, 16, 18	<b>DENIM COLOR COMBO:</b>	01-DARK ENZYME
<b>SEASON:</b>	2020 Fall	<b>BRAND:</b>	Jordache	<b>MAIN MATERIAL:</b>	M191010-R INDG BCI   JOR308   Cotton 92%, Polyester 6%,
<b>PRODUCT TYPE:</b>	Pant	<b>SUB DIVISION:</b>	Girls	<b>AKA:</b>	JZ 27733 C#1

PAGE	REVISION COMMENTS	REVISED BY	REVISED DATE
Revision	REMOVE GRINDING AND TACKING	samantha.mcdonald	01/28/2020 10:15:09 AM
Revision	12.26.19: UPDATE REQUEST 4 PC SIZE 8 DUE: 1.8.20	samantha.mcdonald	12/26/2019 01:12:28 PM

**TRIPLE STACK DESTROYED  
WB LEGGING JZ 27733 C1  
[REFRESH]**

# DESIGN DETAIL



<b>DIVISION   STYLE #:</b>	25	<b>FABRIC CODE   MAIN MATERIAL INFO:</b>	D4     TRIPLE STACK DESTROYED WB	<b>PROTO NUMBER:</b>	25-WU-JDG-0035
<b>DESCRIPTION:</b>	TRIPLE STACK DESTROYED WB	<b>SIZE RANGE:</b>	4, 5, 6, 6X, 7, <u>8</u> , 10, 12, 14, 16, 18	<b>DENIM COLOR COMBO:</b>	01-DARK ENZYME
<b>SEASON:</b>	2020 Fall	<b>BRAND:</b>	Jordache	<b>MAIN MATERIAL:</b>	M191010-R INDG BCI   JOR308   Cotton 92%,
<b>PRODUCT TYPE:</b>	Pant	<b>SUB DIVISION:</b>	Girls	<b>AKA:</b>	JZ 27733 C#1

## TRIPLE STACK DESTROYED WB LEGGING 25-WU-JDG-0035

\*REFERENCE  
JZ 27733



**TRIPLE STACK DESTROYED  
WB LEGGING JZ 27733 C1  
[REFRESH]**

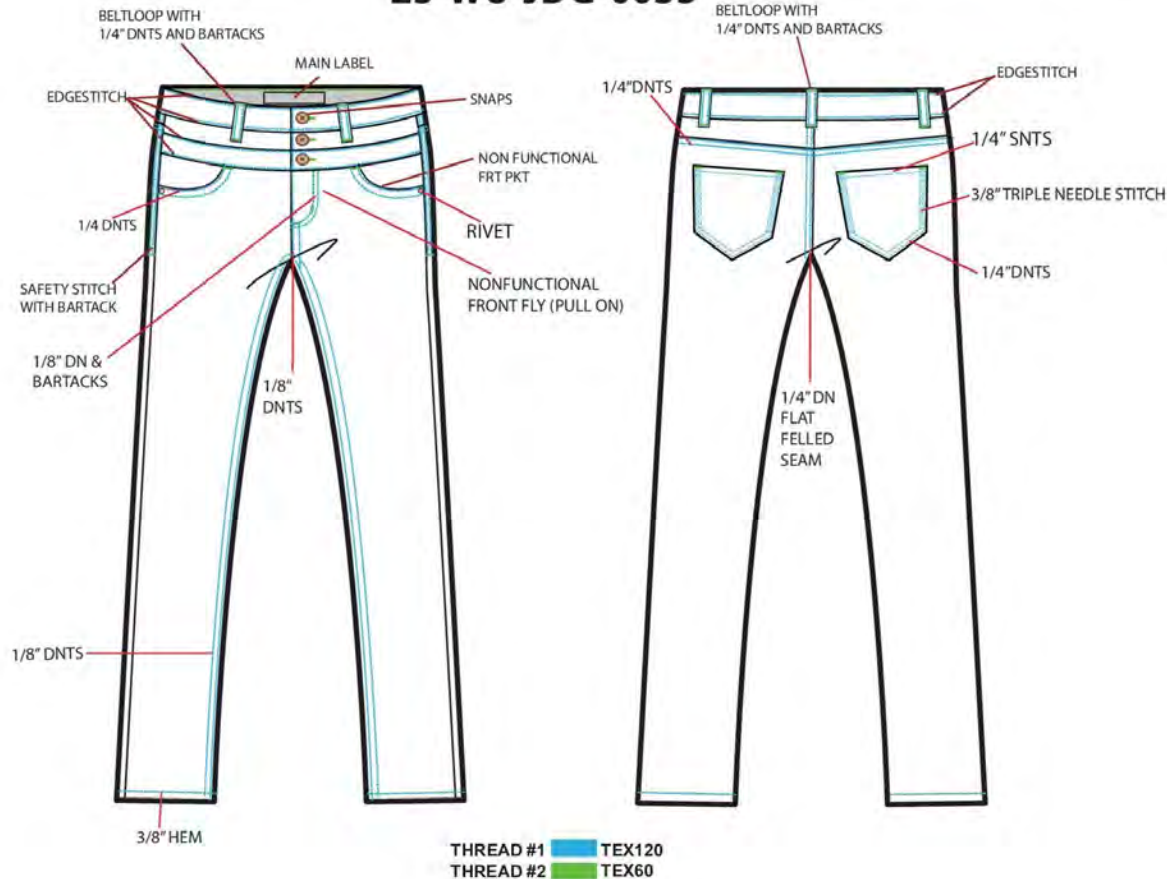
# DESIGN DETAIL



<b>DIVISION   STYLE #:</b>	25	<b>FABRIC CODE   MAIN MATERIAL INFO:</b>	D4     TRIPLE STACK DESTROYED WB	<b>PROTO NUMBER:</b>	25-WU-JDG-0035
<b>DESCRIPTION:</b>	TRIPLE STACK DESTROYED WB	<b>SIZE RANGE:</b>	4, 5, 6, 6X, 7, <u>8</u> , 10, 12, 14, 16, 18	<b>DENIM COLOR COMBO:</b>	01-DARK ENZYME
<b>SEASON:</b>	2020 Fall	<b>BRAND:</b>	Jordache	<b>MAIN MATERIAL:</b>	M191010-R INDG BCI   JOR308   Cotton 92%,
<b>PRODUCT TYPE:</b>	Pant	<b>SUB DIVISION:</b>	Girls	<b>AKA:</b>	JZ 27733 C#1

## TRIPLE STACK DESTROYED WB LEGGING 25-WU-JDG-0035

\*REFERENCE  
JZ 27733



**TRIPLE STACK DESTROYED  
WB LEGGING JZ 27733 C1  
[REFRESH]**

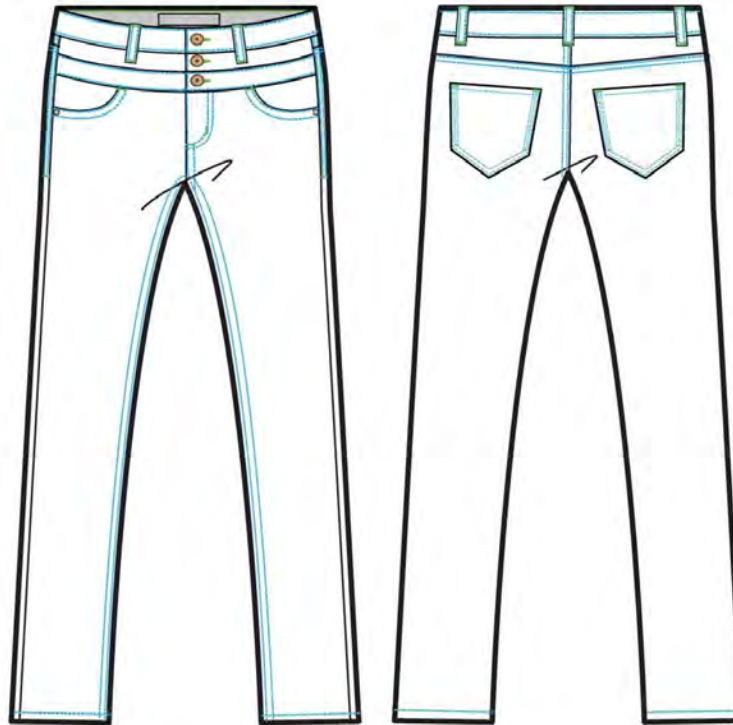
# DESIGN DETAIL



<b>DIVISION   STYLE #:</b>	25	<b>FABRIC CODE   MAIN MATERIAL INFO:</b>	D4     TRIPLE STACK DESTROYED WB	<b>PROTO NUMBER:</b>	25-WU-JDG-0035
<b>DESCRIPTION:</b>	TRIPLE STACK DESTROYED WB	<b>SIZE RANGE:</b>	4, 5, 6, 6X, 7, <u>8</u> , 10, 12, 14, 16, 18	<b>DENIM COLOR COMBO:</b>	01-DARK ENZYME
<b>SEASON:</b>	2020 Fall	<b>BRAND:</b>	Jordache	<b>MAIN MATERIAL:</b>	M191010-R INDG BCI   JOR308   Cotton 92%,
<b>PRODUCT TYPE:</b>	Pant	<b>SUB DIVISION:</b>	Girls	<b>AKA:</b>	JZ 27733 C#1

## TRIPLE STACK DESTROYED WB LEGGING 25-WU-JDG-0035

\*REFERENCE  
JZ 27733




TRIPLE STACK DESTROYED  
WB LEGGING JZ 27733 C1  
[REFRESH]




**BILL OF MATERIAL**



<b>DIVISION   STYLE #:</b>	25	<b>FABRIC CODE   MAIN MATERIAL INFO:</b>	D4     TRIPLE STACK DESTROYED WB LEGGING	<b>PROTO NUMBER:</b>	25-WU-JDG-0035
<b>DESCRIPTION:</b>	TRIPLE STACK DESTROYED WB LEGGING	<b>SIZE RANGE:</b>	4, 5, 6, 6X, 7, 8, 10, 12, 14, 16, 18	<b>DENIM COLOR COMBO:</b>	01-DARK ENZYME
<b>SEASON:</b>	2020 Fall	<b>BRAND:</b>	Jordache	<b>MAIN MATERIAL:</b>	M191010-R INDG BCI   JOR308   Cotton 92%, Polyester 6%,
<b>PRODUCT TYPE:</b>	Pant	<b>SUB DIVISION:</b>	Girls	<b>AKA:</b>	JZ 27733 C#1

#	Image	Material #	M191010-R INDG BCI	Material Name	Weight	Group	Material Type	Placement	composition	Composition	Supplier	UOM	Qty	Status	BOM Status	Comments	1 DARK ENZYME
1		01-00002738	M191010-R INDG BCI	JOR308	10.5 OZ	Main	Stretch Woven		92% Cotton,6% Polyester,2% Spandex		FENGHONG DENIM FABRICS CO., LTD. - China	YD	1.00	Pending Approval			SEE WASH REFERENCE
2		25-LB-00000121	42749174	MAIN LABEL GENERIC MEDIUM		Trim	Label	1 x AT CB INSIDE					1.00	Approved			COMBO A
3		25-BT-00000597	GLORY METAL/PRYM/SCOVILL	20L CF INSERT CHALK BUTTON		Trim	Button	2 x 20L ATINSIDE ADJUSTABLE WAIST					2.00	Approved			NAVY
4		-EL-00000509	CF INSERT	ELASTIC GEN - ADJUSTABLE ELASTIC		Trim	Elastic	3/4" ADJUSTABLE ELASTIC			*Jordache International (HK) Limited - Hong Kong	YD	1.00	Approved		SIZE 7-18	NAVY
5		-EL-00000509	CF INSERT	ELASTIC GEN - ADJUSTABLE ELASTIC		Trim	Elastic	5/8" ADJUSTABLE ELASTIC			*Jordache International (HK) Limited - Hong Kong	YD	1.00	Approved		SIZE 5-6	NAVY
6		-TH-00000525	A&E GLOBAL COLOR PALETTE	TEX120 THREAD		Trim	Thread	THREAD 1			A&E		1.00	Approved			AE W32213 RW7
7		-TH-00000526	A&E GLOBAL COLOR PALETTE	TEX60 THREAD		Trim	Thread	THREAD 2			A&E		1.00	Approved			AE W32101 RW7
8		-TH-00000525	A&E GLOBAL COLOR PALETTE	TEX120 THREAD		Trim	Thread	THREAD 3			A&E		1.00	Approved			AE W32535 RW28
9		-SN-00000511	25-SN-33338890	JORDACHE LOGO SNAP		Trim	Snap	3 x 27L AT CF FLY			*Jordache International (HK) Limited - Hong Kong		3.00	Pending Approval		SIZE 8-18	GY111 LT ANTI BRASS
10		-SN-00000511	25-SN-33338890	JORDACHE LOGO SNAP		Trim	Snap	3 x 24L AT CF FLY			*Jordache International (HK) Limited - Hong Kong		3.00	Pending Approval		SIZE 5-7	GY111 LT ANTI BRASS

<b>TRIPLE STACK DESTROYED</b> WB LEGGING JZ 27733 C1 [REFRESH]		<b>BILL OF MATERIAL</b>				
<b>DIVISION   STYLE #:</b>	25	<b>FABRIC CODE   MAIN MATERIAL INFO:</b>	D4     TRIPLE STACK DESTROYED WB LEGGING	<b>PROTO NUMBER:</b>	25-WU-JDG-0035	
<b>DESCRIPTION:</b>	TRIPLE STACK DESTROYED WB LEGGING	<b>SIZE RANGE:</b>	4, 5, 6, 6X, 7, 8, 10, 12, 14, 16, 18	<b>DENIM COLOR COMBO:</b>	01-DARK ENZYME	
<b>SEASON:</b>	2020 Fall	<b>BRAND:</b>	Jordache	<b>MAIN MATERIAL:</b>	M191010-R INDG BCI   JOR308   Cotton 92%, Polyester 6%.	
<b>PRODUCT TYPE:</b>	Pant	<b>SUB DIVISION:</b>	Girls	<b>AKA:</b>	JZ 27733 C#1	

#	Image	Material #	M191/Supplier Reference Number	Material Name	Weight	Group	Material Type	Placement	composition	Composition	Supplier	UOM	Qty	Status	BOM Status	Comments	1 DARK ENZYME	
11		25-RV-00000493	25-RV-10097124	7MM JORDACHE CAP RIVET		Trim	Rivet	2 X 7MM AT EACH FRONT OUTSIDE PKT EDGE					2.00	Approved				GY111 LT ANTI BRASS
12		25-OT-00000610	25-FS-94353040	SELF DENIM BACKING			Other	M191010-R INDG BACKING AT DESTRUCTION					1.00	Approved	Approved			SELF
13		25-JT-00000753	25-JT-00000753	SUPER SKINNY FASHION JOKER		Label	Joker Tag						1.00	Pending Approval				COMBO A
14		25-HT-00000749	25-JT-00000753	SUPER SKINNY FASHION FABRIC HANGTAG		Label	Hang Tag						1.00	Pending Approval				COMBO A

<b>Total</b>	<b>0.000</b>
--------------	--------------

TRIPLE STACK DESTROYED  
 WB LEGGING JZ 27733 C1  
 [REFRESH]

# BILL OF MATERIAL



<b>DIVISION   STYLE #:</b>	25	<b>FABRIC CODE   MAIN MATERIAL INFO:</b>	D4     TRIPLE STACK DESTROYED WB	<b>PROTO NUMBER:</b>	25-WU-JDG-0035
<b>DESCRIPTION:</b>	TRIPLE STACK DESTROYED WB	<b>SIZE RANGE:</b>	4, 5, 6, 6X, 7, <u>8</u> , 10, 12, 14, 16, 18	<b>DENIM COLOR COMBO:</b>	01-DARK ENZYME
<b>SEASON:</b>	2020 Fall	<b>BRAND:</b>	Jordache	<b>MAIN MATERIAL:</b>	M191010-R INDG BCI   JOR308   Cotton 92%,
<b>PRODUCT TYPE:</b>	Pant	<b>SUB DIVISION:</b>	Girls	<b>AKA:</b>	JZ 27733 C#1

GROUP	FIRST COST
Main	\$0.00
Trim	\$0.00
-- empty --	\$0.00
Label	\$0.00
Total Bom Cost	\$0.000

**TRIPLE STACK DESTROYED**  
**WB LEGGING JZ 27733 C1**  
**[REFRESH]**

# WASH PROCESSES



<b>DIVISION   STYLE #:</b>	25	<b>FABRIC CODE   MAIN MATERIAL INFO:</b>	D4     TRIPLE STACK DESTROYED WB LEGGING	<b>PROTO NUMBER:</b>	25-WU-JDG-0035
<b>DESCRIPTION:</b>	TRIPLE STACK DESTROYED WB LEGGING	<b>SIZE RANGE:</b>	4, 5, 6, 6X, 7, <u>8</u> , 10, 12, 14, 16, 18	<b>DENIM COLOR COMBO:</b>	01-DARK ENZYME
<b>SEASON:</b>	2020 Fall	<b>BRAND:</b>	Jordache	<b>MAIN MATERIAL:</b>	M191010-R INDG BCI   JOR308   Cotton 92%, Polyester 6%,
<b>PRODUCT TYPE:</b>	Pant	<b>SUB DIVISION:</b>	Girls	<b>AKA:</b>	JZ 27733 C#1

#	Image	Wash / Process Name	Placement	Tint	Price	Variance	Degree	Comments	Wash /
1		Dark Enzyme						FOLLOW JZ 27733 C#1 DATED 11/26/19	BASE 0002
2		Flat Whiskers	AT FRT					FOLLOW JZ 27733 C#1 DATED 11/26/19	PRO 0001
3		Hand Sand	AT FRT & BK					FOLLOW JZ 27733 C#1 DATED 11/26/19	PRO 0003
4		PP Spray	AT FRT & BK					FOLLOW JZ 27733 C#1 DATED 11/26/19	PRO 0004
5		Chevrons and/or knee whiskers	AT FRT					FOLLOW JZ 27733 C#1 DATED 11/26/19	PRO 0100

**TRIPLE STACK DESTROYED**  
**WB LEGGING JZ 27733 C1**  
**[REFRESH]**

# WASH PROCESSES



<b>DIVISION   STYLE #:</b>	25	<b>FABRIC CODE   MAIN MATERIAL INFO:</b>	D4     TRIPLE STACK DESTROYED WB LEGGING	<b>PROTO NUMBER:</b>	25-WU-JDG-0035
<b>DESCRIPTION:</b>	TRIPLE STACK DESTROYED WB LEGGING	<b>SIZE RANGE:</b>	4, 5, 6, 6X, 7, <u>8</u> , 10, 12, 14, 16, 18	<b>DENIM COLOR COMBO:</b>	01-DARK ENZYME
<b>SEASON:</b>	2020 Fall	<b>BRAND:</b>	Jordache	<b>MAIN MATERIAL:</b>	M191010-R INDG BCI   JOR308   Cotton 92%, Polyester 6%,
<b>PRODUCT TYPE:</b>	Pant	<b>SUB DIVISION:</b>	Girls	<b>AKA:</b>	JZ 27733 C#1

#	Image	Wash / Process Name	Placement	Tint	Price	Variance	Degree	Comments	Wash /
6		Destruction	AT FRT					FOLLOW JZ 27733 C#1 DATED 11/26/19	PROCO09
7		Grinding	LIGHT AT COIN PKT EDGE AND EACH FRT POCKET EDGE					FOLLOW JZ 27733 C#1 DATED 11/26/19	PROCO7

<b>Total</b>	<b>0.000</b>
--------------	--------------

**TRIPLE STACK  
DESTRUCTED WB LEGGING  
JZ 27733 C1 [REFRESH]**

**WASH REFERENCE**



<b>DIVISION   STYLE #:</b>	25	<b>FABRIC CODE   MAIN MATERIAL INFO:</b>	D4     TRIPLE STACK DESTRUCTED WB	<b>PROTO NUMBER:</b>	25-WU-JDG-0035
<b>DESCRIPTION:</b>	TRIPLE STACK DESTRUCTED WB	<b>SIZE RANGE:</b>	4, 5, 6, 6X, 7, <u>8</u> , 10, 12, 14, 16, 18	<b>DENIM COLOR COMBO:</b>	01-DARK ENZYME
<b>SEASON:</b>	2020 Fall	<b>BRAND:</b>	Jordache	<b>MAIN MATERIAL:</b>	M191010-R INDG BCI   JOR308   Cotton 92%,
<b>PRODUCT TYPE:</b>	Pant	<b>SUB DIVISION:</b>	Girls	<b>AKA:</b>	JZ 27733 C#1



Wash	Dry Process	
Rinse	Baked whiskers/raisin	<input checked="" type="checkbox"/>
Garment wash	Bleach pasting or dots	<input type="checkbox"/>
Super dark enzyme	Bleach spray	<input type="checkbox"/>
Medium enzyme	Center crease	<input type="checkbox"/>
Medium light enzyme	Chevron whiskers	<input checked="" type="checkbox"/>
Light enzyme	Color spray	<input type="checkbox"/>
Enzyme bleach	Glitter spray	<input type="checkbox"/>
Heavy enzyme stone	Grinding	<input checked="" type="checkbox"/>
Dark enzyme	Hand sanding	<input checked="" type="checkbox"/>
Garment dye	Hand sanding light	<input type="checkbox"/>
Dark medium enzyme	Hand sanding medium	<input type="checkbox"/>
Heavy enzyme	Heavy sandblast	<input type="checkbox"/>
Enzyme for non-denim	Holes heavy destruction	<input checked="" type="checkbox"/>
Acid Wash	Light destruction	<input type="checkbox"/>
Tie wash	Allover potassium	<input type="checkbox"/>
Tint	Paint or pigment pasting	<input type="checkbox"/>
Lightening	Paint or pigment spray	<input type="checkbox"/>
<b>Dry Process</b>	Pocket shadow	<input type="checkbox"/>
Shadow whiskers	Potassium	<input checked="" type="checkbox"/>
Strip whiskers	Potassium pasting	<input type="checkbox"/>
Tacking	Sandblast	<input checked="" type="checkbox"/>

\*Remark: Mill dye  Laundry dye

FOLLOW JZ 27733 C#1 DATED 11/26/19

FOLLOW JZ 27733 C#1 DATED 11/26/19

**TRIPLE STACK  
DESTRUCTED WB LEGGING  
JZ 27733 C1 [REFRESH]**

# WASH REFERENCE



<b>DIVISION   STYLE #:</b>	25	<b>FABRIC CODE   MAIN MATERIAL INFO:</b>	D4     TRIPLE STACK DESTRUCTED WB	<b>PROTO NUMBER:</b>	25-WU-JDG-0035
<b>DESCRIPTION:</b>	TRIPLE STACK DESTRUCTED WB	<b>SIZE RANGE:</b>	4, 5, 6, 6X, 7, <u>8</u> , 10, 12, 14, 16, 18	<b>DENIM COLOR COMBO:</b>	01-DARK ENZYME
<b>SEASON:</b>	2020 Fall	<b>BRAND:</b>	Jordache	<b>MAIN MATERIAL:</b>	M191010-R INDG BCI   JOR308   Cotton 92%,
<b>PRODUCT TYPE:</b>	Pant	<b>SUB DIVISION:</b>	Girls	<b>AKA:</b>	JZ 27733 C#1



FOLLOW JZ 27733 C#1 DATED 11/26/19

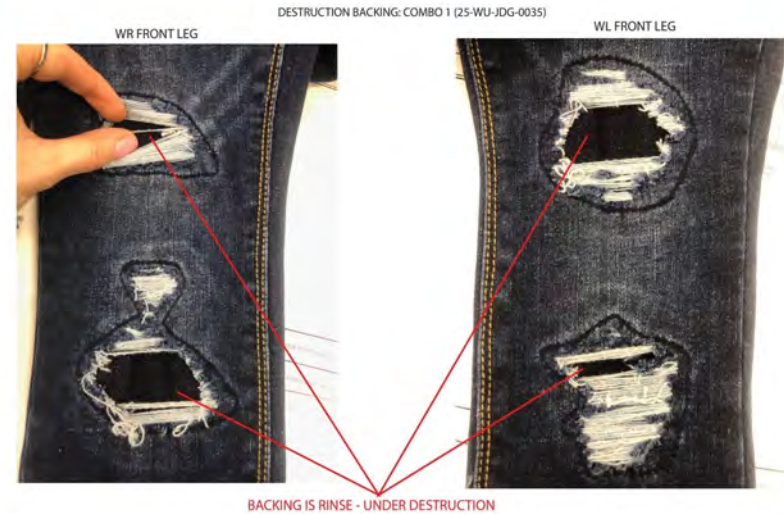
FOLLOW JZ 27733 C#1 DATED 11/26/19

**TRIPLE STACK  
DESTRUCTED WB LEGGING  
JZ 27733 C1 [REFRESH]**

# WASH REFERENCE



<b>DIVISION   STYLE #:</b>	25	<b>FABRIC CODE   MAIN MATERIAL INFO:</b>	D4     TRIPLE STACK DESTRUCTED WB	<b>PROTO NUMBER:</b>	25-WU-JDG-0035
<b>DESCRIPTION:</b>	TRIPLE STACK DESTRUCTED WB	<b>SIZE RANGE:</b>	4, 5, 6, 6X, 7, <u>8</u> , 10, 12, 14, 16, 18	<b>DENIM COLOR COMBO:</b>	01-DARK ENZYME
<b>SEASON:</b>	2020 Fall	<b>BRAND:</b>	Jordache	<b>MAIN MATERIAL:</b>	M191010-R INDG BCI   JOR308   Cotton 92%,
<b>PRODUCT TYPE:</b>	Pant	<b>SUB DIVISION:</b>	Girls	<b>AKA:</b>	JZ 27733 C#1



FOLLOW JZ 27733 C#1 DATED 11/26/19

**TRIPLE STACK  
DESTRUCTED WB LEGGING  
JZ 27733 C1 [REFRESH]**

**WASH REFERENCE**



<b>DIVISION   STYLE #:</b>	25	<b>FABRIC CODE   MAIN MATERIAL INFO:</b>	D4     TRIPLE STACK DESTRUCTED WB	<b>PROTO NUMBER:</b>	25-WU-JDG-0035
<b>DESCRIPTION:</b>	TRIPLE STACK DESTRUCTED WB	<b>SIZE RANGE:</b>	4, 5, 6, 6X, 7, <u>8</u> , 10, 12, 14, 16, 18	<b>DENIM COLOR COMBO:</b>	01-DARK ENZYME
<b>SEASON:</b>	2020 Fall	<b>BRAND:</b>	Jordache	<b>MAIN MATERIAL:</b>	M191010-R INDG BCI   JOR308   Cotton 92%,
<b>PRODUCT TYPE:</b>	Pant	<b>SUB DIVISION:</b>	Girls	<b>AKA:</b>	JZ 27733 C#1



FOLLOW JZ 27733 C#1 DATED 11/26/19 - REMOVE TACKING AT WL FRONT POCKET

REVISED PLACEMENT 2/4/20

**TRIPLE STACK DESTROYED  
WB LEGGING JZ 27733 C1  
[REFRESH]**

# TRIM DETAIL



<b>DIVISION   STYLE #:</b>	25	<b>FABRIC CODE   MAIN MATERIAL INFO:</b>	D4     TRIPLE STACK DESTROYED WB LEGGING	<b>PROTO NUMBER:</b>	25-WU-JDG-0035
<b>DESCRIPTION:</b>	TRIPLE STACK DESTROYED WB LEGGING	<b>SIZE RANGE:</b>	4, 5, 6, 6X, 7, <u>8</u> , 10, 12, 14, 16, 18	<b>DENIM COLOR COMBO:</b>	01-DARK ENZYME
<b>SEASON:</b>	2020 Fall	<b>BRAND:</b>	Jordache	<b>MAIN MATERIAL:</b>	M191010-R INDG BCI   JOR308   Cotton 92%,
<b>PRODUCT TYPE:</b>	Pant	<b>SUB DIVISION:</b>	Girls	<b>AKA:</b>	JZ 27733 C#1

	<b>Material Number</b>	25-OT-00000610
	<b>Material Description</b>	SELF DENIM BACKING
	<b>Material Type</b>	Other
	<b>Division</b>	25
	<b>Composition</b>	
	<b>Weight</b>	
	<b>Dimensions</b>	
	<b>Customer</b>	Wal-Mart USA
	<b>Mill/Supplier Reference Number</b>	25-FS-94353040
	<b>Special Trim</b>	No
	<b>Notes</b>	

**TRIPLE STACK DESTROYED**  
**WB LEGGING JZ 27733 C1**  
**[REFRESH]**

# TRIM DETAIL



<b>DIVISION   STYLE #:</b>	25	<b>FABRIC CODE   MAIN MATERIAL INFO:</b>	D4     TRIPLE STACK DESTROYED WB LEGGING	<b>PROTO NUMBER:</b>	25-WU-JDG-0035
<b>DESCRIPTION:</b>	TRIPLE STACK DESTROYED WB LEGGING	<b>SIZE RANGE:</b>	4, 5, 6, 6X, 7, <u>8</u> , 10, 12, 14, 16, 18	<b>DENIM COLOR COMBO:</b>	01-DARK ENZYME
<b>SEASON:</b>	2020 Fall	<b>BRAND:</b>	Jordache	<b>MAIN MATERIAL:</b>	M191010-R INDG BCI   JOR308   Cotton 92%,
<b>PRODUCT TYPE:</b>	Pant	<b>SUB DIVISION:</b>	Girls	<b>AKA:</b>	JZ 27733 C#1

	<b>Material Number</b>	-TH-00000526
	<b>Material Description</b>	TEX60 THREAD
	<b>Material Type</b>	Thread
	<b>Division</b>	25
	<b>Composition</b>	
	<b>Weight</b>	
	<b>Dimensions</b>	
	<b>Customer</b>	Wal-Mart USA
	<b>Mill/Supplier Reference Number</b>	A&E GLOBAL COLOR PALETTE
	<b>Special Trim</b>	No
	<b>Notes</b>	

**TRIPLE STACK DESTROYED  
WB LEGGING JZ 27733 C1  
[REFRESH]**

# TRIM DETAIL



<b>DIVISION   STYLE #:</b>	25	<b>FABRIC CODE   MAIN MATERIAL INFO:</b>	D4     TRIPLE STACK DESTROYED WB LEGGING	<b>PROTO NUMBER:</b>	25-WU-JDG-0035
<b>DESCRIPTION:</b>	TRIPLE STACK DESTROYED WB LEGGING	<b>SIZE RANGE:</b>	4, 5, 6, 6X, 7, 8, 10, 12, 14, 16, 18	<b>DENIM COLOR COMBO:</b>	01-DARK ENZYME
<b>SEASON:</b>	2020 Fall	<b>BRAND:</b>	Jordache	<b>MAIN MATERIAL:</b>	M191010-R INDG BCI   JOR308   Cotton 92%,
<b>PRODUCT TYPE:</b>	Pant	<b>SUB DIVISION:</b>	Girls	<b>AKA:</b>	JZ 27733 C#1

**ARTWORK SHEET**

DATE: 8.11.14 DIVISION: GIRLS JORDACHE SNAP 25-SN-33338890

COMMENTS: For Emboss Technique, Reference from 25-BT-10097038

POSITION	COLOR COMBO: A	COLOR COMBO: B	COLOR COMBO: C	COLOR COMBO: D
POSITION 1	GY 49 ACMN	GY 52 OXIDE COPPER	GY 14 PEWTER	GY 7 ANTI BRASS
POSITION	COLOR COMBO: E	COLOR COMBO: F	COLOR COMBO: G	COLOR COMBO: H
POSITION 1	GY 191 COPPR SIVER	GY 23 JAPAN SNT ICOPPER	GY 29 BRIGHT TIN	GY 26 SHINY COPPER
		ADDED 9/14/17	ADDED 9/15/17	ADDED 11/18/17
POSITION	COLOR COMBO: I	COLOR COMBO: J	COLOR COMBO: K	COLOR COMBO: L
POSITION 1	GY 4 MATT BRASS	MATTE JORDACHE BLACK ENAMEL	GY 19 MATT DARK PEWTER	GY50 PEACH PINK TIN
	ADDED 9/18/17	ADDED 9/18/17		
POSITION	COLOR COMBO: M	COLOR COMBO: N	COLOR COMBO: O	COLOR COMBO: P
POSITION 1	GY 49 MATT ENAMEL DTM TO BORDEAUX JZ 20958 C.39 8/22/17	GY 49 MATT ENAMEL DTM TO POTENT PURPLE JZ 20958 C.39 8/22/17		

<b>Material Number</b>	-SN-00000511
<b>Material Description</b>	JORDACHE LOGO SNAP
<b>Material Type</b>	Snap
<b>Division</b>	25
<b>Composition</b>	
<b>Weight</b>	
<b>Dimensions</b>	
<b>Customer</b>	Wal-Mart USA
<b>Mill/Supplier Reference Number</b>	25-SN-33338890
<b>Special Trim</b>	No
<b>Notes</b>	25-SN-33338890

**TRIPLE STACK DESTROYED**  
**WB LEGGING JZ 27733 C1**  
**[REFRESH]**

# TRIM DETAIL



<b>DIVISION   STYLE #:</b>	25	<b>FABRIC CODE   MAIN MATERIAL INFO:</b>	D4     TRIPLE STACK DESTROYED WB LEGGING	<b>PROTO NUMBER:</b>	25-WU-JDG-0035
<b>DESCRIPTION:</b>	TRIPLE STACK DESTROYED WB LEGGING	<b>SIZE RANGE:</b>	4, 5, 6, 6X, 7, <u>8</u> , 10, 12, 14, 16, 18	<b>DENIM COLOR COMBO:</b>	01-DARK ENZYME
<b>SEASON:</b>	2020 Fall	<b>BRAND:</b>	Jordache	<b>MAIN MATERIAL:</b>	M191010-R INDG BCI   JOR308   Cotton 92%,
<b>PRODUCT TYPE:</b>	Pant	<b>SUB DIVISION:</b>	Girls	<b>AKA:</b>	JZ 27733 C#1

**JORDACHE** ARTWORK SHEET

DATE: 8/22/11    DIVISION: GIRLS    DESCRIPTION: 7MM JORDACHE CAP RIVET    REFERENCE: 25-RV-10097124

COMMENTS:

POSITION	COLOR COMBO: A	COLOR COMBO: B	COLOR COMBO: C	COLOR COMBO: D
POSITION 1 metal finish	GY 37 CONTRASTED COPPER	GY 48 ACMN	GY 52 OXIDE COPPER	GY 14 PEWTER
		10/21/15*** ADDED		
POSITION	COLOR COMBO: E	COLOR COMBO: F		
POSITION 1 metal finish	GY 7 ANTI BRASS	GY23 JAPAN ANTI COPPER		

<b>Material Number</b>	25-RV-00000493
<b>Material Description</b>	7MM JORDACHE CAP RIVET
<b>Material Type</b>	Rivet
<b>Division</b>	25
<b>Composition</b>	
<b>Weight</b>	
<b>Dimensions</b>	
<b>Customer</b>	Wal-Mart USA
<b>Mill/Supplier Reference Number</b>	25-RV-10097124
<b>Special Trim</b>	No
<b>Notes</b>	25-RV-10097124

**TRIPLE STACK DESTROYED**  
**WB LEGGING JZ 27733 C1**  
**[REFRESH]**

# TRIM DETAIL



<b>DIVISION   STYLE #:</b>	25	<b>FABRIC CODE   MAIN MATERIAL INFO:</b>	D4     TRIPLE STACK DESTROYED WB LEGGING	<b>PROTO NUMBER:</b>	25-WU-JDG-0035
<b>DESCRIPTION:</b>	TRIPLE STACK DESTROYED WB LEGGING	<b>SIZE RANGE:</b>	4, 5, 6, 6X, 7, <u>8</u> , 10, 12, 14, 16, 18	<b>DENIM COLOR COMBO:</b>	01-DARK ENZYME
<b>SEASON:</b>	2020 Fall	<b>BRAND:</b>	Jordache	<b>MAIN MATERIAL:</b>	M191010-R INDG BCI   JOR308   Cotton 92%,
<b>PRODUCT TYPE:</b>	Pant	<b>SUB DIVISION:</b>	Girls	<b>AKA:</b>	JZ 27733 C#1

	<b>Material Number</b>	-TH-00000525
	<b>Material Description</b>	TEX120 THREAD
	<b>Material Type</b>	Thread
	<b>Division</b>	N/A
	<b>Composition</b>	
	<b>Weight</b>	
	<b>Dimensions</b>	
	<b>Customer</b>	Wal-Mart USA
	<b>Mill/Supplier Reference Number</b>	A&E GLOBAL COLOR PALETTE
	<b>Special Trim</b>	No
	<b>Notes</b>	

TRIPLE STACK DESTROYED  
WB LEGGING JZ 27733 C1  
[REFRESH]

# TRIM DETAIL



<b>DIVISION   STYLE #:</b>	25	<b>FABRIC CODE   MAIN MATERIAL INFO:</b>	D4     TRIPLE STACK DESTROYED WB LEGGING	<b>PROTO NUMBER:</b>	25-WU-JDG-0035
<b>DESCRIPTION:</b>	TRIPLE STACK DESTROYED WB LEGGING	<b>SIZE RANGE:</b>	4, 5, 6, 6X, 7, <u>8</u> , 10, 12, 14, 16, 18	<b>DENIM COLOR COMBO:</b>	01-DARK ENZYME
<b>SEASON:</b>	2020 Fall	<b>BRAND:</b>	Jordache	<b>MAIN MATERIAL:</b>	M191010-R INDG BCI   JOR308   Cotton 92%,
<b>PRODUCT TYPE:</b>	Pant	<b>SUB DIVISION:</b>	Girls	<b>AKA:</b>	JZ 27733 C#1



<b>Material Number</b>	25-BT-00000597
<b>Material Description</b>	20L CF INSERT CHALK BUTTON
<b>Material Type</b>	Button
<b>Division</b>	25
<b>Composition</b>	
<b>Weight</b>	
<b>Dimensions</b>	
<b>Customer</b>	Wal-Mart USA
<b>Mill/Supplier Reference Number</b>	GEORTY METAL/PRYM/SCOVIL
<b>Special Trim</b>	No
<b>Notes</b>	CF INSERT 4 HOLE CHALK BUTTON 20L DTM GRD CLR

**TRIPLE STACK DESTROYED  
WB LEGGING JZ 27733 C1  
[REFRESH]**

# TRIM DETAIL



<b>DIVISION   STYLE #:</b>	25	<b>FABRIC CODE   MAIN MATERIAL INFO:</b>	D4     TRIPLE STACK DESTROYED WB LEGGING	<b>PROTO NUMBER:</b>	25-WU-JDG-0035
<b>DESCRIPTION:</b>	TRIPLE STACK DESTROYED WB LEGGING	<b>SIZE RANGE:</b>	4, 5, 6, 6X, 7, <u>8</u> , 10, 12, 14, 16, 18	<b>DENIM COLOR COMBO:</b>	01-DARK ENZYME
<b>SEASON:</b>	2020 Fall	<b>BRAND:</b>	Jordache	<b>MAIN MATERIAL:</b>	M191010-R INDG BCI   JOR308   Cotton 92%,
<b>PRODUCT TYPE:</b>	Pant	<b>SUB DIVISION:</b>	Girls	<b>AKA:</b>	JZ 27733 C#1

	<b>Material Number</b>	-EL-00000509
	<b>Material Description</b>	ELASTIC GEN - ADJUSTABLE ELASTIC
	<b>Material Type</b>	Elastic
	<b>Division</b>	25
	<b>Composition</b>	
	<b>Weight</b>	
	<b>Dimensions</b>	5/8" WIDTH
	<b>Customer</b>	Wal-Mart USA
	<b>Mill/Supplier Reference Number</b>	CF INSERT
	<b>Special Trim</b>	No
	<b>Notes</b>	25-EL-ELASTIC GEN

TRIPLE STACK DESTROYED  
WB LEGGING JZ 27733 C1  
[REFRESH]

# TRIM DETAIL



<b>DIVISION   STYLE #:</b>	25	<b>FABRIC CODE   MAIN MATERIAL INFO:</b>	D4     TRIPLE STACK DESTROYED WB LEGGING	<b>PROTO NUMBER:</b>	25-WU-JDG-0035
<b>DESCRIPTION:</b>	TRIPLE STACK DESTROYED WB LEGGING	<b>SIZE RANGE:</b>	4, 5, 6, 6X, 7, <u>8</u> , 10, 12, 14, 16, 18	<b>DENIM COLOR COMBO:</b>	01-DARK ENZYME
<b>SEASON:</b>	2020 Fall	<b>BRAND:</b>	Jordache	<b>MAIN MATERIAL:</b>	M191010-R INDG BCI   JOR308   Cotton 92%,
<b>PRODUCT TYPE:</b>	Pant	<b>SUB DIVISION:</b>	Girls	<b>AKA:</b>	JZ 27733 C#1

**ARTWORK SHEET**

<b>DATE:</b> 10.31.17	<b>DIVISION:</b> GIRLS	<b>DESCRIPTION:</b> INTERIOR LABEL (4-6X)	<b>REFERENCE #:</b> 25-LB-42749174
--------------------------	---------------------------	--	---------------------------------------

1/4" ALLOWANCE

POSITION 1

POSITION 2

JORDACHE 8 MADE IN BANGLADESH

0.8" HIGH

2.47" WIDE

STITCH

JORDACHE 8 MADE IN BANGLADESH

VARIABLE INFO

0.8" HIGH

2" WIDE

Font Style: Helvetica - Ultra Compressed

Font Size: 19.36 pt, 7.04

COMMENTS: \*2 SIDE SEW

Position	Color Combo: A	Color Combo: B	Color Combo: C	Color Combo: D
POSITION 1 GROUND	D.W.S	D.W.S	BLACK	D.W.S
POSITION 2	D.W.S	D.W.S	D.W.S	WHITE

25-LB-42749174 10.31.17

<b>Material Number</b>	25-LB-00000121
<b>Material Description</b>	MAIN LABEL GENERIC MEDIUM
<b>Material Type</b>	Label
<b>Division</b>	25
<b>Composition</b>	
<b>Weight</b>	
<b>Dimensions</b>	
<b>Customer</b>	Wal*Mart Stores
<b>Mill/Supplier Reference Number</b>	42749174
<b>Special Trim</b>	No
<b>Notes</b>	

TRIPLE STACK

DESTRUCTED WB LEGGING

# DESIGN CONSTRUCTION DETAIL

JZ 27733 C1 [REFRESH]



<b>DIVISION   STYLE #:</b>	25	<b>FABRIC CODE   MAIN MATERIAL INFO:</b>	D4     TRIPLE STACK DESTRUCTED WB	<b>PROTO NUMBER:</b>	25-WU-JDG-0035
<b>DESCRIPTION:</b>	TRIPLE STACK DESTRUCTED WB	<b>SIZE RANGE:</b>	4, 5, 6, 6X, 7, <u>8</u> , 10, 12, 14, 16, 18	<b>DENIM COLOR COMBO:</b>	01-DARK ENZYME
<b>SEASON:</b>	2020 Fall	<b>BRAND:</b>	Jordache	<b>MAIN MATERIAL:</b>	M191010-R INDG BCI   JOR308   Cotton 92%,
<b>PRODUCT TYPE:</b>	Pant	<b>SUB DIVISION:</b>	Girls	<b>AKA:</b>	JZ 27733 C#1

NO DATA

TRIPLE STACK DESTROYED  
WB LEGGING JZ 27733 C1  
[REFRESH]

# STITCH DETAIL



<b>DIVISION   STYLE #:</b>	25	<b>FABRIC CODE   MAIN MATERIAL INFO:</b>	D4     TRIPLE STACK DESTROYED WB LEGGING	<b>PROTO NUMBER:</b>	25-WU-JDG-0035
<b>DESCRIPTION:</b>	TRIPLE STACK DESTROYED WB LEGGING	<b>SIZE RANGE:</b>	4, 5, 6, 6X, 7, <u>8</u> , 10, 12, 14, 16, 18	<b>DENIM COLOR COMBO:</b>	01-DARK ENZYME
<b>SEASON:</b>	2020 Fall	<b>BRAND:</b>	Jordache	<b>MAIN MATERIAL:</b>	M191010-R INDG BCI   JOR308   Cotton 92%, Polyester 6%,
<b>PRODUCT TYPE:</b>	Pant	<b>SUB DIVISION:</b>	Girls	<b>AKA:</b>	JZ 27733 C#1

NO DATA

**TRIPLE STACK  
DESTRUCTED WB LEGGING  
JZ 27733 C1 [REFRESH]**

# DEVELOPMENT WASH



<b>DIVISION   STYLE #:</b>	25	<b>FABRIC CODE   MAIN MATERIAL INFO:</b>	D4     TRIPLE STACK DESTRUCTED WB	<b>PROTO NUMBER:</b>	25-WU-JDG-0035
<b>DESCRIPTION:</b>	TRIPLE STACK DESTRUCTED WB	<b>SIZE RANGE:</b>	4, 5, 6, 6X, 7, <u>8</u> , 10, 12, 14, 16, 18	<b>DENIM COLOR COMBO:</b>	01-DARK ENZYME
<b>SEASON:</b>	2020 Fall	<b>BRAND:</b>	Jordache	<b>MAIN MATERIAL:</b>	M191010-R INDG BCI   JOR308   Cotton 92%,
<b>PRODUCT TYPE:</b>	Pant	<b>SUB DIVISION:</b>	Girls	<b>AKA:</b>	JZ 27733 C#1

NO DATA

**TRIPLE STACK  
DESTRUCTED WB LEGGING  
JZ 27733 C1 [REFRESH]**

# PRODUCTION WASH



<b>DIVISION   STYLE #:</b>	25	<b>FABRIC CODE   MAIN MATERIAL INFO:</b>	D4     TRIPLE STACK DESTRUCTED WB	<b>PROTO NUMBER:</b>	25-WU-JDG-0035
<b>DESCRIPTION:</b>	TRIPLE STACK DESTRUCTED WB	<b>SIZE RANGE:</b>	4, 5, 6, 6X, 7, <u>8</u> , 10, 12, 14, 16, 18	<b>DENIM COLOR COMBO:</b>	01-DARK ENZYME
<b>SEASON:</b>	2020 Fall	<b>BRAND:</b>	Jordache	<b>MAIN MATERIAL:</b>	M191010-R INDG BCI   JOR308   Cotton 92%,
<b>PRODUCT TYPE:</b>	Pant	<b>SUB DIVISION:</b>	Girls	<b>AKA:</b>	JZ 27733 C#1

NO DATA

**TRIPLE STACK DESTROYED**  
**WB LEGGING JZ 27733 C1**  
**[REFRESH]**

# DEVELOPMENT SPEC



<b>DIVISION   STYLE #:</b>	25	<b>FABRIC CODE   MAIN MATERIAL INFO:</b>	D4     TRIPLE STACK DESTROYED WB	<b>PROTO NUMBER:</b>	25-WU-JDG-0035
<b>DESCRIPTION:</b>	TRIPLE STACK DESTROYED WB	<b>SIZE RANGE:</b>	4, 5, 6, 6X, 7, <u>8</u> , 10, 12, 14, 16, 18	<b>DENIM COLOR COMBO:</b>	01-DARK ENZYME
<b>SEASON:</b>	2020 Fall	<b>BRAND:</b>	Jordache	<b>MAIN MATERIAL:</b>	M191010-R INDG BCI   JOR308   Cotton 92%,
<b>PRODUCT TYPE:</b>	Pant	<b>SUB DIVISION:</b>	Girls	<b>AKA:</b>	JZ 27733 C#1

CODE	POINT OF MEASURE	COMMENTS	TOL -	TOL +	Fit Sample
JD_H-03	WAIST - ALONG TOP EDGE (BOTTOMS)		1/2	1/2	
JD_H-07	WAISTBAND HEIGHT	TOAL	1/4	1/4	
	WAIST BAND HEIGHT - STRAIGHT		1/4	1/4	
	ELASTIC HEIGHT	ADJUSTABLE ELASTIC	1/8	1/8	
JD_K-01	FRONT RISE - TOP OF WB TO CROTCH SEAM		1/4	1/4	
JD_K-05	BACK RISE - TOP OF WB TO CROTCH SEAM		1/4	1/4	
JD_I-02	HIP/SEAT, 3 POINT MSMT UP FROM CROTCH/GUSSET		1/8	1/8	
JD_I-07	LOW HIP (3" UP FROM CROTCH) 3 PT MEASURE		1/2	1/2	
JD_K-10	THIGH ( 1" BELOW CROTCH POINT)		1/4	1/4	
JD_L-14	MID THIGH PLACEMENT		1/8	1/8	
JD_K-12	MID THIGH CIRCUMFERENCE		1/4	1/4	
JD_L-02	KNEE PLACEMENT FROM CROTCH		1/8	1/8	
JD_K-24	KNEE CIRCUMFERENCE		1/4	1/4	
JD_K-16	CALF CIRCUMFERNCE AT 18" below crotch		1/4	1/4	
JD_L-12	LEG OPENING AT ANKLE (TIGHT, SKINNY, CLOSE TO ANKLE)		1/4	1/4	
JD_A-32	INSEAM-REGULAR		1/2	1/2	
JD_J-02	BOTTOM HEM HEIGHT		1/8	1/8	
JD_N-03	FLY WIDTH		1/8	1/8	
N-01	FLY LENGTH TO BOTTOM OF 'J' STITCH		1/4	1/4	
O-47	POCKET OPENING WIDTH ALONG WB SEAM (BOTTOMS)		1/4	1/4	
O-48	POCKET OPENING HEIGHT FROM WB SEAM (BOTTOMS)		1/4	1/4	
JD_M-04	YOKE HEIGHT AT CB (BOTTOMS)		1/4	1/4	
JD_M-05	YOKE HEIGHT AT SIDE (BOTTOMS)		1/4	1/4	

**TRIPLE STACK DESTROYED**  
**WB LEGGING JZ 27733 C1**  
**[REFRESH]**

# DEVELOPMENT SPEC



<b>DIVISION   STYLE #:</b>	25	<b>FABRIC CODE   MAIN MATERIAL INFO:</b>	D4     TRIPLE STACK DESTROYED WB	<b>PROTO NUMBER:</b>	25-WU-JDG-0035
<b>DESCRIPTION:</b>	TRIPLE STACK DESTROYED WB	<b>SIZE RANGE:</b>	4, 5, 6, 6X, 7, <u>8</u> , 10, 12, 14, 16, 18	<b>DENIM COLOR COMBO:</b>	01-DARK ENZYME
<b>SEASON:</b>	2020 Fall	<b>BRAND:</b>	Jordache	<b>MAIN MATERIAL:</b>	M191010-R INDG BCI   JOR308   Cotton 92%,
<b>PRODUCT TYPE:</b>	Pant	<b>SUB DIVISION:</b>	Girls	<b>AKA:</b>	JZ 27733 C#1

CODE	POINT OF MEASURE	COMMENTS	TOL -	TOL +	Fit Sample
JD_O-77	BACK POCKET WIDTH AT TOP EDGE		1/4	1/4	
JD_O-78	BACK POCKET WIDTH AT BOTTOM		1/4	1/4	
JD_O-79	BACK POCKET LENGTH AT CENTER		1/4	1/4	
O-34	BACK POCKET PLACEMENT FROM YOKE SEAM - INNER	NEAR CB	1/8	1/8	
O-35	BACK POCKET PLACEMENT FROM YOKE SEAM - OUTER	NEAR SS	1/8	1/8	
O-37	BACK POCKET PLACEMENT FROM CB RISE SEAM		1/8	1/8	
JD_Q-13	BELT LOOP WIDTH		1/4	1/4	
JD_Q-14	BELT LOOP HEIGHT (EDGE TO EDGE)		1/4	1/4	

TRIPLE STACK DESTROYED  
WB LEGGING JZ 27733 C1  
[REFRESH]

**GRADED SPEC**



<b>DIVISION   STYLE #:</b>	25	<b>FABRIC CODE   MAIN MATERIAL INFO:</b>	D4     TRIPLE STACK DESTROYED WB	<b>PROTO NUMBER:</b>	25-WU-JDG-0035
<b>DESCRIPTION:</b>	TRIPLE STACK DESTROYED WB	<b>SIZE RANGE:</b>	4, 5, 6, 6X, 7, 8, 10, 12, 14, 16, 18	<b>DENIM COLOR COMBO:</b>	01-DARK ENZYME
<b>SEASON:</b>	2020 Fall	<b>BRAND:</b>	Jordache	<b>MAIN MATERIAL:</b>	M191010-R INDG BCI   JOR308   Cotton 92%.
<b>PRODUCT TYPE:</b>	Pant	<b>SUB DIVISION:</b>	Girls	<b>AKA:</b>	JZ 27733 C#1

CODE	POINT OF MEASURE	TOL -	TOL +	4	5	6	6X	7	8	10	12	14	16
JD_H-03	WAIST - ALONG TOP EDGE (BOTTOMS)	1/2	1/2										
JD_H-07	WAISTBAND HEIGHT	1/4	1/4										
	WAIST BAND HEIGHT - STRAIGHT	1/4	1/4										
	ELASTIC HEIGHT	1/8	1/8										
JD_K-01	FRONT RISE - TOP OF WB TO CROTCH SEAM	1/4	1/4										
JD_K-05	BACK RISE - TOP OF WB TO CROTCH SEAM	1/4	1/4										
JD_I-02	HIP/SEAT, 3 POINT MSMT UP FROM CROTCH/GUSSET	1/8	1/8										
JD_I-07	LOW HIP (3" UP FROM CROTCH) 3 PT MEASURE	1/2	1/2										
JD_K-10	THIGH ( 1" BELOW CROTCH POINT)	1/4	1/4										
JD_L-14	MID THIGH PLACEMENT	1/8	1/8										
JD_K-12	MID THIGH CIRCUMFERENCE	1/4	1/4										
JD_L-02	KNEE PLACEMENT FROM CROTCH	1/8	1/8										
JD_K-24	KNEE CIRCUMFERENCE	1/4	1/4										
JD_K-16	CALF CIRCUMFERNCE AT 18" below crotch	1/4	1/4										
JD_L-12	LEG OPENING AT ANKLE (TIGHT, SKINNY, CLOSE TO ANKLE)	1/4	1/4										
JD_A-32	INSEAM-REGULAR	1/2	1/2										
JD_J-02	BOTTOM HEM HEIGHT	1/8	1/8										
JD_N-03	FLY WIDTH	1/8	1/8										
N-01	FLY LENGTH TO BOTTOM OF 'J' STITCH	1/4	1/4										
O-47	POCKET OPENING WIDTH ALONG WB SEAM (BOTTOMS)	1/4	1/4										
O-48	POCKET OPENING HEIGHT FROM WB SEAM (BOTTOMS)	1/4	1/4										
JD_M-04	YOKE HEIGHT AT CB (BOTTOMS)	1/4	1/4										
JD_M-05	YOKE HEIGHT AT SIDE (BOTTOMS)	1/4	1/4										
JD_O-77	BACK POCKET WIDTH AT TOP EDGE	1/4	1/4										
JD_O-78	BACK POCKET WIDTH AT BOTTOM	1/4	1/4										
JD_O-79	BACK POCKET LENGTH AT CENTER	1/4	1/4										
O-34	BACK POCKET PLACEMENT FROM YOKE SEAM - INNER	1/8	1/8										
O-35	BACK POCKET PLACEMENT FROM YOKE SEAM - OUTER	1/8	1/8										
O-37	BACK POCKET PLACEMENT FROM CB RISE SEAM	1/8	1/8										
JD_Q-13	BELT LOOP WIDTH	1/4	1/4										
JD_Q-14	BELT LOOP HEIGHT (EDGE TO EDGE)	1/4	1/4										

**TRIPLE STACK DESTROYED**  
**WB LEGGING JZ 27733 C1**  
**[REFRESH]**

# GRADED SPEC(1)



<b>DIVISION   STYLE #:</b>	25	<b>FABRIC CODE   MAIN MATERIAL INFO:</b>	D4     TRIPLE STACK DESTROYED WB	<b>PROTO NUMBER:</b>	25-WU-JDG-0035
<b>DESCRIPTION:</b>	TRIPLE STACK DESTROYED WB	<b>SIZE RANGE:</b>	4, 5, 6, 6X, 7, 8, 10, 12, 14, 16, 18	<b>DENIM COLOR COMBO:</b>	01-DARK ENZYME
<b>SEASON:</b>	2020 Fall	<b>BRAND:</b>	Jordache	<b>MAIN MATERIAL:</b>	M191010-R INDG BCI   JOR308   Cotton 92%,
<b>PRODUCT TYPE:</b>	Pant	<b>SUB DIVISION:</b>	Girls	<b>AKA:</b>	JZ 27733 C#1

CODE	POINT OF MEASURE	TOL -	TOL +	18
JD_H-03	WAIST - ALONG TOP EDGE (BOTTOMS)	1/2	1/2	
JD_H-07	WAISTBAND HEIGHT	1/4	1/4	
	WAIST BAND HEIGHT - STRAIGHT	1/4	1/4	
	ELASTIC HEIGHT	1/8	1/8	
JD_K-01	FRONT RISE - TOP OF WB TO CROTCH SEAM	1/4	1/4	
JD_K-05	BACK RISE - TOP OF WB TO CROTCH SEAM	1/4	1/4	
JD_I-02	HIP/SEAT, 3 POINT MSMT UP FROM CROTCH/GUSSET	1/8	1/8	
JD_I-07	LOW HIP (3" UP FROM CROTCH) 3 PT MEASURE	1/2	1/2	
JD_K-10	THIGH ( 1" BELOW CROTCH POINT)	1/4	1/4	
JD_L-14	MID THIGH PLACEMENT	1/8	1/8	
JD_K-12	MID THIGH CIRCUMFERENCE	1/4	1/4	
JD_L-02	KNEE PLACEMENT FROM CROTCH	1/8	1/8	
JD_K-24	KNEE CIRCUMFERENCE	1/4	1/4	
JD_K-16	CALF CIRCUMFERENCE AT 18" below crotch	1/4	1/4	
JD_L-12	LEG OPENING AT ANKLE (TIGHT, SKINNY, CLOSE TO ANKLE)	1/4	1/4	
JD_A-32	INSEAM-REGULAR	1/2	1/2	
JD_J-02	BOTTOM HEM HEIGHT	1/8	1/8	
JD_N-03	FLY WIDTH	1/8	1/8	
N-01	FLY LENGTH TO BOTTOM OF 'J' STITCH	1/4	1/4	
O-47	POCKET OPENING WIDTH ALONG WB SEAM (BOTTOMS)	1/4	1/4	
O-48	POCKET OPENING HEIGHT FROM WB SEAM (BOTTOMS)	1/4	1/4	
JD_M-04	YOKE HEIGHT AT CB (BOTTOMS)	1/4	1/4	
JD_M-05	YOKE HEIGHT AT SIDE (BOTTOMS)	1/4	1/4	
JD_O-77	BACK POCKET WIDTH AT TOP EDGE	1/4	1/4	

**TRIPLE STACK DESTROYED**  
**WB LEGGING JZ 27733 C1**  
**[REFRESH]**

# GRADED SPEC(1)



<b>DIVISION   STYLE #:</b>	25	<b>FABRIC CODE   MAIN MATERIAL INFO:</b>	D4     TRIPLE STACK DESTROYED WB	<b>PROTO NUMBER:</b>	25-WU-JDG-0035
<b>DESCRIPTION:</b>	TRIPLE STACK DESTROYED WB	<b>SIZE RANGE:</b>	4, 5, 6, 6X, 7, <u>8</u> , 10, 12, 14, 16, 18	<b>DENIM COLOR COMBO:</b>	01-DARK ENZYME
<b>SEASON:</b>	2020 Fall	<b>BRAND:</b>	Jordache	<b>MAIN MATERIAL:</b>	M191010-R INDG BCI   JOR308   Cotton 92%,
<b>PRODUCT TYPE:</b>	Pant	<b>SUB DIVISION:</b>	Girls	<b>AKA:</b>	JZ 27733 C#1

CODE	POINT OF MEASURE	TOL -	TOL +	18
JD_O-78	BACK POCKET WIDTH AT BOTTOM	1/4	1/4	
JD_O-79	BACK POCKET LENGTH AT CENTER	1/4	1/4	
O-34	BACK POCKET PLACEMENT FROM YOKE SEAM - INNER	1/8	1/8	
O-35	BACK POCKET PLACEMENT FROM YOKE SEAM - OUTER	1/8	1/8	
O-37	BACK POCKET PLACEMENT FROM CB RISE SEAM	1/8	1/8	
JD_Q-13	BELT LOOP WIDTH	1/4	1/4	
JD_Q-14	BELT LOOP HEIGHT (EDGE TO EDGE)	1/4	1/4	

TRIPLE STACK DESTROYED  
WB LEGGING JZ 27733 C1  
[REFRESH]

## GRADE RULES



<b>DIVISION   STYLE #:</b>	25	<b>FABRIC CODE   MAIN MATERIAL INFO:</b>	D4     TRIPLE STACK DESTROYED WB	<b>PROTO NUMBER:</b>	25-WU-JDG-0035
<b>DESCRIPTION:</b>	TRIPLE STACK DESTROYED WB	<b>SIZE RANGE:</b>	4, 5, 6, 6X, 7, 8, 10, 12, 14, 16, 18	<b>DENIM COLOR COMBO:</b>	01-DARK ENZYME
<b>SEASON:</b>	2020 Fall	<b>BRAND:</b>	Jordache	<b>MAIN MATERIAL:</b>	M191010-R INDG BCI   JOR308   Cotton 92%.
<b>PRODUCT TYPE:</b>	Pant	<b>SUB DIVISION:</b>	Girls	<b>AKA:</b>	JZ 27733 C#1

CODE	POINT OF MEASURE	TOL -	TOL +	4	5	6	6X	7	8	10	12	14	16
JD_H-03	WAIST - ALONG TOP EDGE (BOTTOMS)	1/2	1/2										
JD_H-07	WAISTBAND HEIGHT	1/4	1/4										
	WAIST BAND HEIGHT - STRAIGHT	1/4	1/4										
	ELASTIC HEIGHT	1/8	1/8										
JD_K-01	FRONT RISE - TOP OF WB TO CROTCH SEAM	1/4	1/4										
JD_K-05	BACK RISE - TOP OF WB TO CROTCH SEAM	1/4	1/4										
JD_I-02	HIP/SEAT, 3 POINT MSMT UP FROM CROTCH/GUSSET	1/8	1/8										
JD_I-07	LOW HIP (3" UP FROM CROTCH) 3 PT MEASURE	1/2	1/2										
JD_K-10	THIGH ( 1" BELOW CROTCH POINT)	1/4	1/4										
JD_L-14	MID THIGH PLACEMENT	1/8	1/8										
JD_K-12	MID THIGH CIRCUMFERENCE	1/4	1/4										
JD_L-02	KNEE PLACEMENT FROM CROTCH	1/8	1/8										
JD_K-24	KNEE CIRCUMFERENCE	1/4	1/4										
JD_K-16	CALF CIRCUMFERNCE AT 18" below crotch	1/4	1/4										
JD_L-12	LEG OPENING AT ANKLE (TIGHT, SKINNY, CLOSE TO ANKLE)	1/4	1/4										
JD_A-32	INSEAM-REGULAR	1/2	1/2										
JD_J-02	BOTTOM HEM HEIGHT	1/8	1/8										
JD_N-03	FLY WIDTH	1/8	1/8										
N-01	FLY LENGTH TO BOTTOM OF 'J' STITCH	1/4	1/4										
O-47	POCKET OPENING WIDTH ALONG WB SEAM (BOTTOMS)	1/4	1/4										
O-48	POCKET OPENING HEIGHT FROM WB SEAM (BOTTOMS)	1/4	1/4										
JD_M-04	YOKE HEIGHT AT CB (BOTTOMS)	1/4	1/4										
JD_M-05	YOKE HEIGHT AT SIDE (BOTTOMS)	1/4	1/4										
JD_O-77	BACK POCKET WIDTH AT TOP EDGE	1/4	1/4										
JD_O-78	BACK POCKET WIDTH AT BOTTOM	1/4	1/4										
JD_O-79	BACK POCKET LENGTH AT CENTER	1/4	1/4										
O-34	BACK POCKET PLACEMENT FROM YOKE SEAM - INNER	1/8	1/8										
O-35	BACK POCKET PLACEMENT FROM YOKE SEAM - OUTER	1/8	1/8										
O-37	BACK POCKET PLACEMENT FROM CB RISE SEAM	1/8	1/8										
JD_Q-13	BELT LOOP WIDTH	1/4	1/4										
JD_Q-14	BELT LOOP HEIGHT (EDGE TO EDGE)	1/4	1/4										

**TRIPLE STACK DESTROYED**  
**WB LEGGING JZ 27733 C1**  
**[REFRESH]**

# GRADE RULES(1)



<b>DIVISION   STYLE #:</b>	25	<b>FABRIC CODE   MAIN MATERIAL INFO:</b>	D4     TRIPLE STACK DESTROYED WB	<b>PROTO NUMBER:</b>	25-WU-JDG-0035
<b>DESCRIPTION:</b>	TRIPLE STACK DESTROYED WB	<b>SIZE RANGE:</b>	4, 5, 6, 6X, 7, 8, 10, 12, 14, 16, 18	<b>DENIM COLOR COMBO:</b>	01-DARK ENZYME
<b>SEASON:</b>	2020 Fall	<b>BRAND:</b>	Jordache	<b>MAIN MATERIAL:</b>	M191010-R INDG BCI   JOR308   Cotton 92%,
<b>PRODUCT TYPE:</b>	Pant	<b>SUB DIVISION:</b>	Girls	<b>AKA:</b>	JZ 27733 C#1

CODE	POINT OF MEASURE	TOL -	TOL +	18
JD_H-03	WAIST - ALONG TOP EDGE (BOTTOMS)	1/2	1/2	
JD_H-07	WAISTBAND HEIGHT	1/4	1/4	
	WAIST BAND HEIGHT - STRAIGHT	1/4	1/4	
	ELASTIC HEIGHT	1/8	1/8	
JD_K-01	FRONT RISE - TOP OF WB TO CROTCH SEAM	1/4	1/4	
JD_K-05	BACK RISE - TOP OF WB TO CROTCH SEAM	1/4	1/4	
JD_I-02	HIP/SEAT, 3 POINT MSMT UP FROM CROTCH/GUSSET	1/8	1/8	
JD_I-07	LOW HIP (3" UP FROM CROTCH) 3 PT MEASURE	1/2	1/2	
JD_K-10	THIGH ( 1" BELOW CROTCH POINT)	1/4	1/4	
JD_L-14	MID THIGH PLACEMENT	1/8	1/8	
JD_K-12	MID THIGH CIRCUMFERENCE	1/4	1/4	
JD_L-02	KNEE PLACEMENT FROM CROTCH	1/8	1/8	
JD_K-24	KNEE CIRCUMFERENCE	1/4	1/4	
JD_K-16	CALF CIRCUMFERENCE AT 18" below crotch	1/4	1/4	
JD_L-12	LEG OPENING AT ANKLE (TIGHT, SKINNY, CLOSE TO ANKLE)	1/4	1/4	
JD_A-32	INSEAM-REGULAR	1/2	1/2	
JD_J-02	BOTTOM HEM HEIGHT	1/8	1/8	
JD_N-03	FLY WIDTH	1/8	1/8	
N-01	FLY LENGTH TO BOTTOM OF 'J' STITCH	1/4	1/4	
O-47	POCKET OPENING WIDTH ALONG WB SEAM (BOTTOMS)	1/4	1/4	
O-48	POCKET OPENING HEIGHT FROM WB SEAM (BOTTOMS)	1/4	1/4	
JD_M-04	YOKE HEIGHT AT CB (BOTTOMS)	1/4	1/4	
JD_M-05	YOKE HEIGHT AT SIDE (BOTTOMS)	1/4	1/4	
JD_O-77	BACK POCKET WIDTH AT TOP EDGE	1/4	1/4	

TRIPLE STACK DESTROYED  
WB LEGGING JZ 27733 C1  
[REFRESH]

# GRADE RULES(1)



<b>DIVISION   STYLE #:</b>	25	<b>FABRIC CODE   MAIN MATERIAL INFO:</b>	D4     TRIPLE STACK DESTROYED WB	<b>PROTO NUMBER:</b>	25-WU-JDG-0035
<b>DESCRIPTION:</b>	TRIPLE STACK DESTROYED WB	<b>SIZE RANGE:</b>	4, 5, 6, 6X, 7, <u>8</u> , 10, 12, 14, 16, 18	<b>DENIM COLOR COMBO:</b>	01-DARK ENZYME
<b>SEASON:</b>	2020 Fall	<b>BRAND:</b>	Jordache	<b>MAIN MATERIAL:</b>	M191010-R INDG BCI   JOR308   Cotton 92%,
<b>PRODUCT TYPE:</b>	Pant	<b>SUB DIVISION:</b>	Girls	<b>AKA:</b>	JZ 27733 C#1

CODE	POINT OF MEASURE	TOL -	TOL +	18
JD_O-78	BACK POCKET WIDTH AT BOTTOM	1/4	1/4	
JD_O-79	BACK POCKET LENGTH AT CENTER	1/4	1/4	
O-34	BACK POCKET PLACEMENT FROM YOKE SEAM - INNER	1/8	1/8	
O-35	BACK POCKET PLACEMENT FROM YOKE SEAM - OUTER	1/8	1/8	
O-37	BACK POCKET PLACEMENT FROM CB RISE SEAM	1/8	1/8	
JD_Q-13	BELT LOOP WIDTH	1/4	1/4	
JD_Q-14	BELT LOOP HEIGHT (EDGE TO EDGE)	1/4	1/4	

TRIPLE STACK DESTROYED WB  
LEGGING JZ 27733 C1  
[REFRESH]

# TECHNICAL SKETCH



<b>DIVISION   STYLE #:</b>	25	<b>FABRIC CODE   MAIN MATERIAL INFO:</b>	D4     TRIPLE STACK DESTROYED WB	<b>PROTO NUMBER:</b>	25-WU-JDG-0035
<b>DESCRIPTION:</b>	TRIPLE STACK DESTROYED WB	<b>SIZE RANGE:</b>	4, 5, 6, 6X, 7, 8, 10, 12, 14, 16, 18	<b>DENIM COLOR COMBO:</b>	01-DARK ENZYME
<b>SEASON:</b>	2020 Fall	<b>BRAND:</b>	Jordache	<b>MAIN MATERIAL:</b>	M191010-R INDG BCI   JOR308   Cotton 92%,
<b>PRODUCT TYPE:</b>	Pant	<b>SUB DIVISION:</b>	Girls	<b>AKA:</b>	JZ 27733 C#1

TRIPLE STACK DESTROYED  
WB LEGGING JZ 27733 C1  
[REFRESH]

## TECH DEVELOPMENT NOTES



<b>DIVISION   STYLE #:</b>	25	<b>FABRIC CODE   MAIN MATERIAL INFO:</b>	D4     TRIPLE STACK DESTROYED WB	<b>PROTO NUMBER:</b>	25-WU-JDG-0035
<b>DESCRIPTION:</b>	TRIPLE STACK DESTROYED WB	<b>SIZE RANGE:</b>	4, 5, 6, 6X, 7, <u>8</u> , 10, 12, 14, 16, 18	<b>DENIM COLOR COMBO:</b>	01-DARK ENZYME
<b>SEASON:</b>	2020 Fall	<b>BRAND:</b>	Jordache	<b>MAIN MATERIAL:</b>	M191010-R INDG BCI   JOR308   Cotton 92%,
<b>PRODUCT TYPE:</b>	Pant	<b>SUB DIVISION:</b>	Girls	<b>AKA:</b>	JZ 27733 C#1

01/01/2020:

Please use approved production pattern JZ-22906 as block. Modify pattern as per this style and specs for 1st fit sample.

\* This is pull on style with Cf 3 snap are functional. But Fly is non- functional. and tacked with bartacked for enforced.

\* 1pc fold over WB with cross grainline and adjustable elastic. Same WB constructional as skinny.

\* Inseam - 5 thread safety stitch + top stitching NO FLAT FELLED SEAM.

\* 3 thread overlock bttm of the fly facing.

\* Front pocket and front ly are non- functional.

Please send me 1st fit sample in CO# 01, 1pc for approval.

Thanks,

Mittal

**TRIPLE STACK  
DESTRUCTED WB LEGGING  
JZ 27733 C1 [REFRESH]**

**TECH CONSTRUCTION DETAIL**



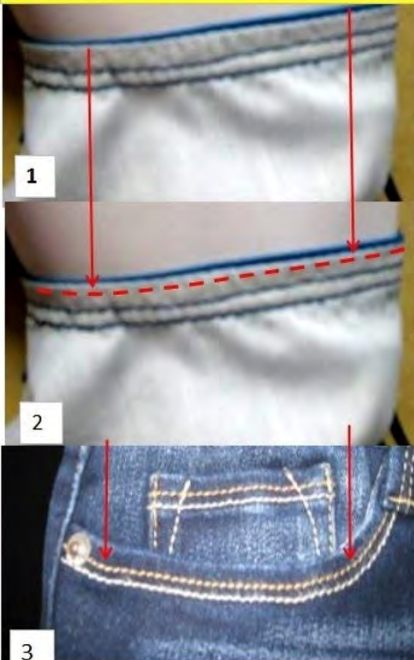
<b>DIVISION   STYLE #:</b>	25	<b>FABRIC CODE   MAIN MATERIAL INFO:</b>	D4     TRIPLE STACK DESTRUCTED WB	<b>PROTO NUMBER:</b>	25-WU-JDG-0035
<b>DESCRIPTION:</b>	TRIPLE STACK DESTRUCTED WB	<b>SIZE RANGE:</b>	4, 5, 6, 6X, 7, <u>8</u> , 10, 12, 14, 16, 18	<b>DENIM COLOR COMBO:</b>	01-DARK ENZYME
<b>SEASON:</b>	2020 Fall	<b>BRAND:</b>	Jordache	<b>MAIN MATERIAL:</b>	M191010-R INDG BCI   JOR308   Cotton 92%,
<b>PRODUCT TYPE:</b>	Pant	<b>SUB DIVISION:</b>	Girls	<b>AKA:</b>	JZ 27733 C#1

**OPTION: (A) or (B) depends on the styles details**

**(A)** Add an extra ( BACK STITCH) to inside pocket opening (pocketing must turned in 1/16" - 1/8") to make sure all excess fabric are smooth out before topstitching.

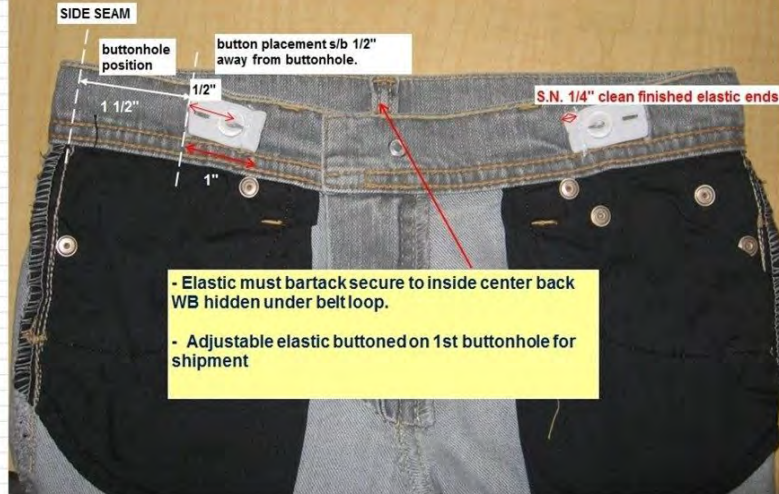
**(B)** Or add taping to inside front pocket opening using pocketing fabric.

Pocketing with or without taping must turned at least ( 1/16" - 1/8" ) to make sure all excess fabric are smooth out before topstitching; to avoid pocketing extending over the edge.



UPDATED 5/20/10

**WALMART GIRLS - INSIDE ELASTIC CONSTRUCTION DETAILS:**



**TRIPLE STACK  
DESTRUCTED WB LEGGING  
JZ 27733 C1 [REFRESH]**

# TECH CONSTRUCTION DETAIL



<b>DIVISION   STYLE #:</b>	25	<b>FABRIC CODE   MAIN MATERIAL INFO:</b>	D4     TRIPLE STACK DESTRUCTED WB	<b>PROTO NUMBER:</b>	25-WU-JDG-0035
<b>DESCRIPTION:</b>	TRIPLE STACK DESTRUCTED WB	<b>SIZE RANGE:</b>	4, 5, 6, 6X, 7, <u>8</u> , 10, 12, 14, 16, 18	<b>DENIM COLOR COMBO:</b>	01-DARK ENZYME
<b>SEASON:</b>	2020 Fall	<b>BRAND:</b>	Jordache	<b>MAIN MATERIAL:</b>	M191010-R INDG BCI   JOR308   Cotton 92%,
<b>PRODUCT TYPE:</b>	Pant	<b>SUB DIVISION:</b>	Girls	<b>AKA:</b>	JZ 27733 C#1



**3 thread overlock  
bottom of front fly**



TRIPLE STACK DESTROYED WB  
LEGGING JZ 27733 C1 [REFRESH]

**FIT SAMPLE**



DIVISION   STYLE #:	25	FABRIC CODE   MAIN	D4     TRIPLE STACK	PROTO NUMBER:	25-WU-JDG-0035
DESCRIPTION:	TRIPLE STACK	SIZE RANGE:		DENIM COLOR COMBO:	01-DARK ENZYME
SEASON:	2020 Fall	BRAND:	Jordache	MAIN MATERIAL:	M191010-R INDG BCI
PRODUCT TYPE:	Pant	SUB DIVISION:	Girls	AKA:	JZ 27733 C#1

**1ST SUBMIT (8)**

Status: Requested  
Due Date: 1/29/2020

CODE	POINT OF MEASURE	COMMENTS	TOL -	TOL +	REQUEST	SAMPLE	DIFF	REVISED	POM COMMENTS
JD_H-03	WAIST - ALONG TOP EDGE (BOTTOMS)		1/2	1/2	23 1/2	23 3/4	1/4		
JD_H-07	WAISTBAND HEIGHT	TOAL	1/4	1/4	3 1/2	3 1/2	0		
	WAIST BAND HEIGHT - STRAIGHT		1/4	1/4	1 1/4	1 1/4	0		
	ELASTIC HEIGHT	ADJUSTABLE ELASTIC	1/8	1/8	3/4	3/4	0		
JD_K-01	FRONT RISE - TOP OF WB TO CROTCH SEAM		1/4	1/4	8 1/2	8 3/4	1/4		
JD_K-05	BACK RISE - TOP OF WB TO CROTCH SEAM		1/4	1/4	12 1/4	12 1/4	0		
JD_I-02	HIP/SEAT, 3 POINT MSMT UP FROM CROTCH/GUSSET		1/8	1/8	2 1/2	2 1/2	0		
JD_I-07	LOW HIP (3" UP FROM CROTCH) 3 PT MEASURE		1/2	1/2	26 3/4	27 1/4	1/2		
JD_K-10	THIGH ( 1" BELOW CROTCH POINT)		1/4	1/4	15 5/8	16 1/2	7/8		
JD_L-14	MID THIGH PLACEMENT		1/8	1/8	5	5	0		
JD_K-12	MID THIGH CIRCUMFERENCE		1/4	1/4	13 5/8	14	3/8		
JD_L-02	KNEE PLACEMENT FROM CROTCH		1/8	1/8	10 1/2	10 1/2	0		
JD_K-24	KNEE CIRCUMFERENCE		1/4	1/4	10	10 1/4	1/4		
JD_K-16	CALF CIRCUMFERNCE AT 18" below crotch		1/4	1/4	9 1/2	9 1/2	0		
JD_L-12	LEG OPENING AT ANKLE (TIGHT, SKINNY, CLOSE TO ANKLE)		1/4	1/4	8 1/2	8 1/2	0		
JD_A-32	INSEAM-REGULAR		1/2	1/2	24	24	0		
JD_J-02	BOTTOM HEM HEIGHT		1/8	1/8	3/8	3/8	0		
JD_N-03	FLY WIDTH		1/8	1/8	1 1/4	1 1/4	0		
N-01	FLY LENGTH TO BOTTOM OF 'J' STITCH		1/4	1/4	2 3/8	2 3/8	0		
O-47	POCKET OPENING WIDTH ALONG WB SEAM (BOTTOMS)		1/4	1/4	3	3	0		
O-48	POCKET OPENING HEIGHT FROM WB SEAM (BOTTOMS)		1/4	1/4	1 3/4	1 3/4	0		
JD_M-04	YOKE HEIGHT AT CB (BOTTOMS)		1/4	1/4	1 1/2	1 1/2	0		
JD_M-05	YOKE HEIGHT AT SIDE (BOTTOMS)		1/4	1/4	1/2	1/2	0		
JD_O-77	BACK POCKET WIDTH AT TOP EDGE		1/4	1/4	4 3/4	4 3/4	0		
JD_O-78	BACK POCKET WIDTH AT BOTTOM		1/4	1/4	4	4	0		
JD_O-79	BACK POCKET LENGTH AT CENTER		1/4	1/4	4 3/4	4 3/4	0		
O-34	BACK POCKET PLACEMENT FROM YOKE SEAM - INNER	NEAR CB	1/8	1/8	3/4	3/4	0		
O-35	BACK POCKET PLACEMENT FROM YOKE SEAM - OUTER	NEAR SS	1/8	1/8	7/8	7/8	0		
O-37	BACK POCKET PLACEMENT FROM CB RISE SEAM		1/8	1/8	1 1/8	1 1/8	0		
JD_Q-13	BELT LOOP WIDTH		1/4	1/4	3/8	3/8	0		
JD_Q-14	BELT LOOP HEIGHT (EDGE TO EDGE)		1/4	1/4	1 7/8	1 7/8	0		



TRIPLE STACK DESTROYED WB  
LEGGING JZ 27733 C1 [REFRESH]

# PRODUCTION SAMPLE APPROVAL



<b>DIVISION   STYLE #:</b>	25	<b>FABRIC CODE   MAIN MATERIAL INFO:</b>	D4     TRIPLE STACK DESTROYED WB LEGGING	<b>PROTO NUMBER:</b>	25-WU-JDG-0035
<b>DESCRIPTION:</b>	TRIPLE STACK DESTROYED WB LEGGING	<b>SIZE RANGE:</b>	4, 5, 6, 6X, 7, 8, 10, 12, 14, 16, 18	<b>DENIM COLOR COMBO:</b>	01-DARK ENZYME
<b>SEASON:</b>	2020 Fall	<b>BRAND:</b>	Jordache	<b>MAIN MATERIAL:</b>	M191010-R INDG BCI   JOR308   Cotton 92%, Polyester 6%, Spandex
<b>PRODUCT TYPE:</b>	Pant	<b>SUB DIVISION:</b>	Girls	<b>AKA:</b>	JZ 27733 C#1

<b>BULK CUT</b>		<b>BULK WASH</b>		<b>FIT</b>	
<b>CONSTRUCTION</b>		<b>TRIM</b>			

<b>Colorway</b>	<b>PPS Comments</b>
-----------------	---------------------

**TRIPLE STACK  
DESTRUCTED WB LEGGING  
JZ 27733 C1 [REFRESH]**

# PACKAGING INSTRUCTIONS



<b>DIVISION   STYLE #:</b>	25	<b>FABRIC CODE   MAIN MATERIAL INFO:</b>	D4     TRIPLE STACK DESTRUCTED WB	<b>PROTO NUMBER:</b>	25-WU-JDG-0035
<b>DESCRIPTION:</b>	TRIPLE STACK DESTRUCTED WB	<b>SIZE RANGE:</b>	4, 5, 6, 6X, 7, <u>8</u> , 10, 12, 14, 16, 18	<b>DENIM COLOR COMBO:</b>	01-DARK ENZYME
<b>SEASON:</b>	2020 Fall	<b>BRAND:</b>	Jordache	<b>MAIN MATERIAL:</b>	M191010-R INDG BCI   JOR308   Cotton 92%,
<b>PRODUCT TYPE:</b>	Pant	<b>SUB DIVISION:</b>	Girls	<b>AKA:</b>	JZ 27733 C#1

NO DATA