

Cover Sheet		ORANGE INTERNATIONAL INC		DEVELOPMENT TECH PACK	
STYLE #:	6289	SAMPLE SIZE:	7/8	DATE:	4/17/2013
CUSTOMER:		SAMPLE TYPE:	Development	SAMPLE DUE DATE:	
FACTORY:		SAMPLE QTY:	2 pcs	REVISED:	
DESIGNER:	Jessica	DESCRIPTION: dressy denim trouser with pickstitching			
SEASON:					

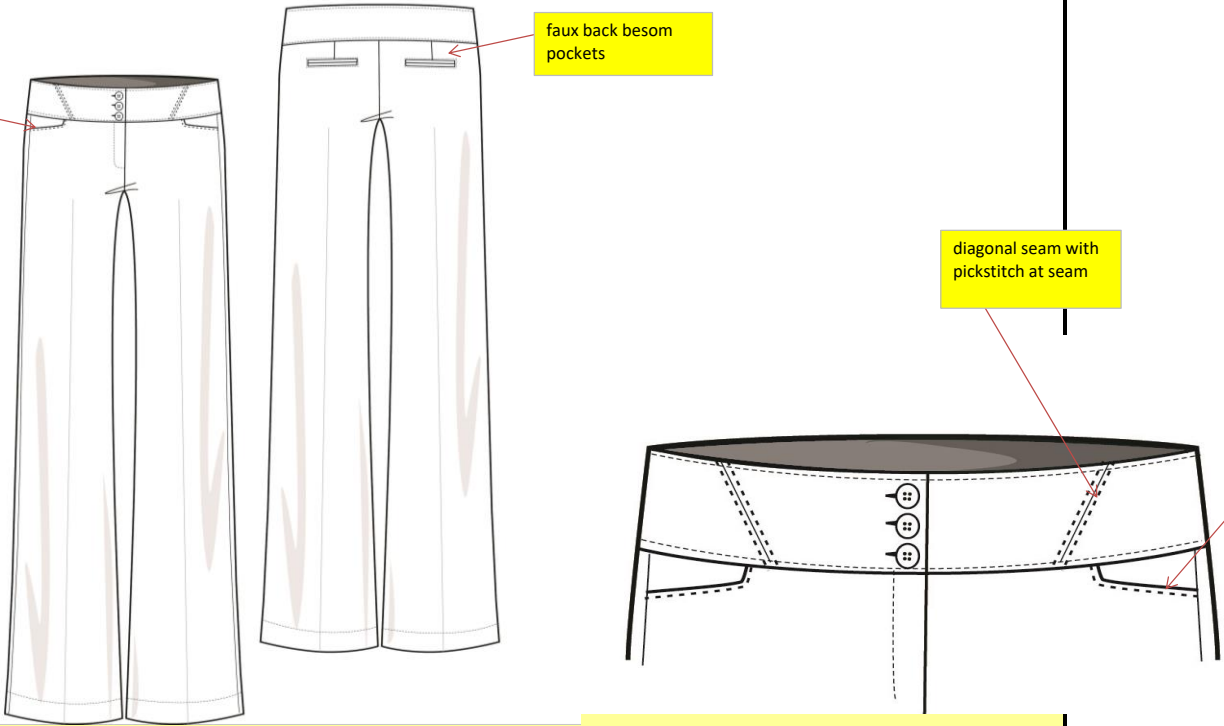
functional front pockets



faux back besom pockets


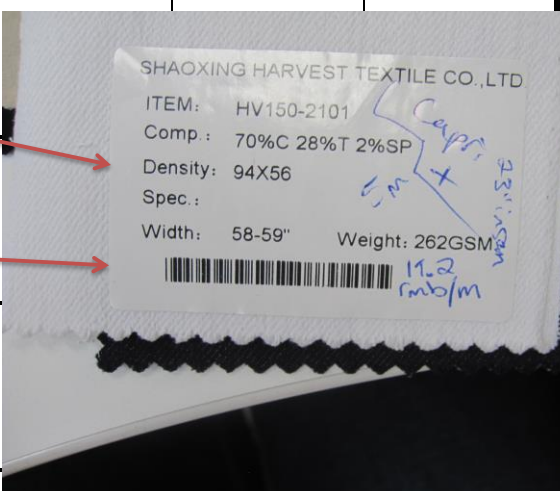
diagonal seam with pickstitch at seam

pickstitch

Special Notes:  
Smart fit



Trims & Label		ORANGE INTERNATIONAL INC			DEVELOPMENT TECH PACK		
STYLE #:	6289	SAMPLE SIZE:	7/8	DATE:	4/17/2013		
CUSTOMER:	0	SAMPLE TYPE:	Development	DESIGNER:			
FACTORY:	0	SAMPLE QTY:	2 pcs	SHOP / SEASON:	01/00/00		
DESIGNER:	Jessica	DESCRIPTION: dressy denim trouser with pickstitching					
SEASON:	0						
Trim	Description	Quantity	Color				
BUTTON	31L @ CF metal rim buttons-3 (SOURCE BUTTON IN PHOTO)	3	anti brass				
ZIPPER	YKK #3 metal AT FLY	1	anti brass				
LABEL INFORMATION							
MAIN LABEL:							
COO LABEL:							
FIT LABEL:							
HANGTAG:							
JOKER:							
CARE LABEL:							
SPECIAL INSTRUCTIONS:							
REVISIONS:							

Fabric		ORANGE INTERNATIONAL INC			DEVELOPMENT TECH PACK	
STYLE #:	6289	SAMPLE SIZE:	7/8	DATE:	4/17/2013	
CUSTOMER:	0	SAMPLE TYPE:	Development			
FACTORY:	0	SAMPLE QTY:	2 pcs	SHOP / SEASON:		
DESIGNER:	Jessica	DESCRIPTION: dressy denim trouser with pickstitching				
SEASON:	0					
<b>Body Fabric</b>		COLOR COMBO 1	COLOR COMBO 2			
Fabric:	denim (order from Harvest)	white				
Fabric Number:	HV150-2101					
Fiber Content:	70% C 28% T 2% SP					
Construction:						
Fabric Weight:	262 gsm					
<b>INSIDE WB</b>						
Fabric:	denim (order from Harvest)	white				
Fabric Number:	HV150-2101					
Fiber Content:	70% C 28% T 2% SP					
Construction:						
Fabric Weight:	262 gsm					
<b>POCKET BAG</b>						
Fabric:	T/C	white				
Fabric Number:						
Fiber Content:						
Construction:						
Fabric Weight:						
<b>Thread:</b>						
Weight 40/3, 8-9 SPI-		DTM body				
<b>Interfacing:</b>						
USE APPROPRIATE WEIGHT AT INSIDE WB ,PKTS		white				
<b>Style Artwork:</b>						
Plaid:						
Graphic:						
Embroidery:						
Garment Finish:		NON GARMENT WASH				
REVISIONS:						

Basic Specs			ORANGE INTERNATIONAL INC				PRICING TECH PACK				
STYLE #:	6289		SAMPLE SIZE:	7/8		DATE:	4/17/2013				
CUSTOMER:	0		SAMPLE TYPE:	Development		DESIGNER:					
FACTORY:	0		SAMPLE QTY:	2 pcs		SHOP / SEASON:	0				
DESIGNER:	Jessica		DESCRIPTION: dresy denim trouser with pickstitching								
SEASON:	0										
			DATE:	4/18/2013							
#	POM		TOL.	INITIAL SPEC	fit measures +/-	+/-			+/-	FINAL SPECS	
1	WAIST CIRC. @ TOP EDGE			31 1/2	####	#####			0		
2	WAIST RELAXED @ SEAM			35 1/2	####	#####			0		
3	W/B HEIGHT			2 3/4	####	-2 3/4			0		
4	HEM HEIGHT			1 1/2	####	-1 1/2			0		
5	FRONT RISE			9 1/4	####	-9 1/4			0		
6	BACK RISE			15 1/2	####	#####			0		
7	LOW HIP CIRC.(3 PT MEAS) - 7" BLW WAIST TOP			38	###	###			0		
8	INSEAM			33	###	###			0		
9	THIGH CIRC. 1"blw crotch seam			23 1/2	####	#####			0		
10	KNEE 11 3/4" BELOW CROTCH CIRC.			18	###	###			0		
11	LEG OPENING CIRC.			22	###	###			0		
12	ACTUAL ZP LENGTH			3	##	-3			0		
13	J-STITCH LENGTH			3 1/2	####	-3 1/2			0		
14	J-STITCH WIDTH			1 1/4	####	-1 1/4			0		
15	BACK BESOM PKT WIDTH			4 3/4	####	-4 3/4			0		
16	BACK BESOM PKT HEIGHT			1/2	- 1/2	- 1/2			0		
17	BACK PKT PLACEMENT INNER EDGE FROM WB JOIN			1 3/4	####	-1 3/4			0		
18	BACK PKT PLACEMENT OUTER EDGE FROM WB JOIN			1 3/4	####	-1 3/4			0		
19	BACK PKT PLACEMENT FROM CB SEAM			1 1/2	####	-1 1/2			0		
20	FRONT POCKET OPENING @ WB SEAM , FROM SS			4 1/2	####	-4 1/2			0		
21	FRONT POCKET OPENING BEL W/B SEAM @SS			1 1/4	####	-1 1/4			0		
22	BACK DART LENGTH BELOW W/B			1 3/4	####	-1 3/4			0		
23	BACK DART FM CB AT W/B SEAM			3 3/4	####	-3 3/4			0		
24	BACK DART INTAKE AT W/B SEAM			1/4	- 1/4	- 1/4			0		
25											
26											
27											
Revisions:											