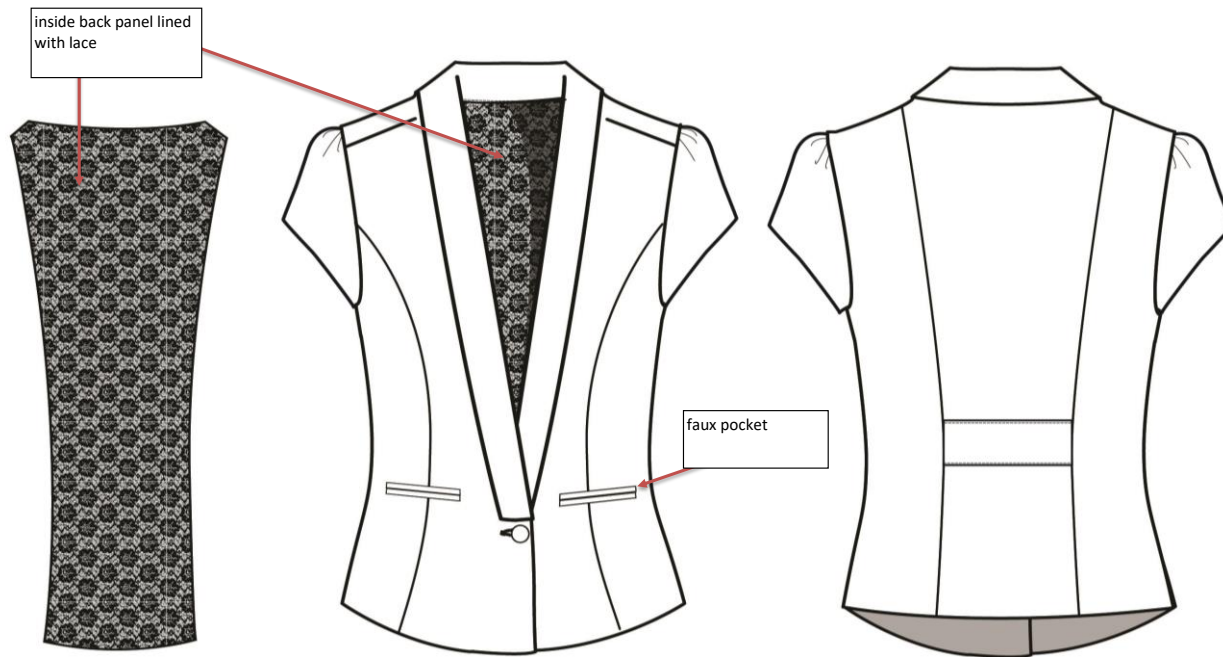


### STYLE DETAILS

Vendor/Factory Name	Orange Intl	Delivery	1.21.14	Date Created/By	7/29/2013	Sketch or Photo
Style No.	20430	Vendor Product No.	6558	Date Modified/By	8.20.13 jw	
Buyer Name	Tiffany/Sue	Style Description	lace lined cap sleeve blazer	Date PP Approved/By		
Dept. No.	355	Fabric	sophie twill/lace	Date TOP Approved/By		
Tech Designer	Beng Hook	Fiber Content	T/R/S 63/33/4	Status	development	

### SKETCH DETAILS



### SAMPLE EVALUATION

Vendor/Factory Name	Orange Intl	Delivery	1.21.14	Date Created/By	41484	Sketch or Photo
Style No.	20430	Vendor Product No.	6558	Date Modified/By	8.20.13 jw	
Buyer Name	Tiffany/Sue	Style Description	lace lined cap sleeve blazer	Date PP Approved/By	0	
Dept. No.	355	Fabric	sophie twill/lace	Date TOP Approved/By	0	
Tech Designer	Beng Hook	Fiber Content	T/R/S 63/33/4	Status	development	

**1st FIT SAMPLE**

POM CODE	Points of Measure	TOL +/-	Target Spec Size M	Vendor 7/29/13	Difference vs. Target	Maurices ws 7.29.13	Difference vs. Target	Revised Spec
LTH100	Body Length from HPS	1/2	24		-24	23 7/8	- 1/8	24 1/2
LTH102	Body Length from Center Back Neck	1/2	23		-23	22 3/4	- 1/4	22 1/2
BST101	Chest width @ 1" below armhole	1/2	17 3/4		-17 3/4	17 3/8	- 3/8	17 3/4
WST200	Waist position from HPS	0	15		-15	15	0	15
WST100	Waist width	1/2	16 1/4		-16 1/4	16	- 1/4	15 1/2
HIP105.1	High Hip width @ X" from HPS	1/2			0		0	
HIP105.2	Low Hip width @ X" from HPS	1/2			0		0	
SWP101	Sweep width straight	1/2			0		0	
SWP105	Sweep width, extended	1/2			0		0	
SHR100	Shoulder slope	1/8			0		0	
HOD100	Hood opening relaxed- straight	1/4			0		0	
HOD200	Hood height at HPS	1/4			0		0	
HOD201	Hood width 5" from top	1/4			0		0	
NCK106	Minimum neck opening	0			0		0	
NCK108	Neck Width from HPS	1/4	7		-7	7	0	6 1/2
NCK200	Front neck drop from HPS	1/4	19 1/2		-19 1/2	19	- 1/2	19
NCK300	Back neck drop from HPS	1/8	1/2		- 1/2	3/4	1/4	1/2
ACR300	Across Shoulder, back	3/8	15 1/2		-15 1/2	15 1/4	- 1/4	14
ACR102	Across Front @ 5" down from HPS	3/8	13 1/8		-13 1/8	13 1/4	1/8	12 1/4
ACR202	Across Back @ 5" down from HPS	3/8	14		-14	14	0	14
ARM103	Armhole Straight	1/4	9 5/8		-9 5/8	8 3/4	- 7/8	8 1/2
SLV404	Sleeve opening width, S/S	3/8	7 1/4		-7 1/4	7 7/8	5/8	6 3/4
SLV103	Sleeve length from shoulder, S/S	1/4	5		-5	5 1/8	1/8	6 1/2

**STATUS:** Rejected, submit 2nd fit sample with following corrections/changes.

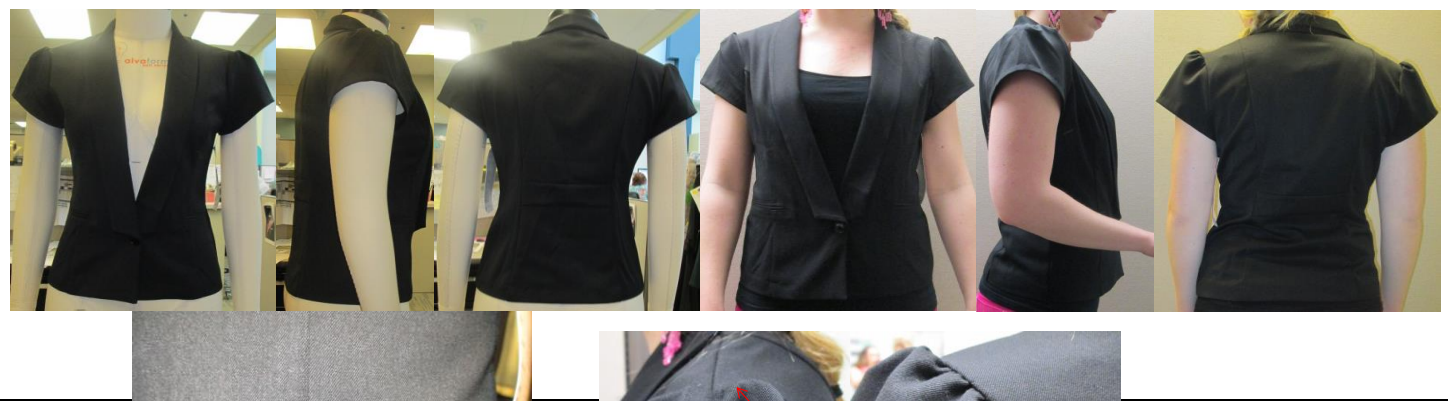
**FIT COMMENTS:**

1) please follow style 98443 (vpn 5681) for spec, spec has been revised to reflect 98443

\*please re-attach grade rule page, formulas are not correct\*

**CONSTRUCTION COMMENTS:**

- 1) reduce sleeve shirring & center on sleeve cap
- 2) watch front pocket sewing, see photo



### SAMPLE EVALUATION

Vendor/Factory Name	Orange Intl	Delivery	1.21.14	Date Created/By	41484	Sketch or Photo
Style No.	20430	Vendor Product No.	6558	Date Modified/By	8.20.13 jw	
Buyer Name	Tiffany/Sue	Style Description	lace lined cap sleeve blazer	Date PP Approved/By	0	
Dept. No.	355	Fabric	sophie twill/lace	Date TOP Approved/By	0	
Tech Designer	Beng Hook	Fiber Content	T/R/S 63/33/4	Status	development	

### 2nd FIT SAMPLE

POM CODE	Points of Measure	TOL +/-	Target Spec Size M	Vendor 8/13/13	Difference vs. Target	Maurices 8.20	Difference vs. Target	Revised Spec
LTH100	Body Length from HPS	1/2	24 1/2	24 3/4	1/4	24 3/4	1/4	24 1/2
LTH102	Body Length from Center Back Neck	1/2	22 1/2	22 7/8	3/8	22 3/4	1/4	22 1/2
BST101	Chest width @ 1" below armhole	1/2	17 3/4	17 7/8	1/8	17 7/8	1/8	17 3/4
WST200	Waist position from HPS	0	15	15	0	15	0	15
WST100	Waist width	1/2	15 1/2	15 1/2	0	15 3/4	1/4	15 1/2
SWP101	Sweep width straight	1/2			0	19	19	20
SHR100	Shoulder slope	1/8			0	1 3/8	1 3/8	1 1/4
NCK108	Neck Width from HPS	1/4	6 1/2	6 3/4	1/4	6 3/4	1/4	6 1/2
NCK200	Front neck drop from HPS	1/4	19	19 1/2	1/2	19	0	19
NCK300	Back neck drop from HPS	1/8	1 1/2	5/8	1/8	1/2	0	1/2
ACR300	Across Shoulder, back	3/8	14	14	0	14 1/4	1/4	14
ACR102	Across Front @ 5" down from HPS	3/8	12 1/4	12 3/8	1/8	13	3/4	13
ACR202	Across Back @ 5" down from HPS	3/8	14	13 5/8	- 3/8	13 5/8	- 3/8	13 5/8
ARM103	Armhole Straight	1/4	8 1/2	8 5/8	1/8	8 5/8	1/8	8 1/2
SLV404	Sleeve opening width, S/S	3/8	6 3/4	6 7/8	1/8	6 7/8	1/8	6 3/4
SLV103	Sleeve length from shoulder, S/S	1/4	6 1/2	6 5/8	1/8	6 1/2	0	6 1/2

**STATUS:** Approved with corrections/changes, proceed with PP as detailed in comments.

**FIT COMMENTS:**

- 1) revise sweep width straight, sample to be wider (+1") @ sweep: spec revised to 20 "
- 2) revised spec for across front, revised to match sample: spec revised to 13"
- 3) revised spec for across back, revised to match sample: spec revised to 13 5/8"
- 4) center front hem is not balanced, see photo

**CONSTRUCTION COMMENTS:**

- 1) lapel construction is thick, revise **COLLAR FACING to trico** to reduce bulk



### SAMPLE EVALUATION

Vendor/Factory Name	Orange Intl	Delivery	1.21.14	Date Created/By	41484	Sketch or Photo
Style No.	20430	Vendor Product No.	6558	Date Modified/By	8.20.13 jw	
Buyer Name	Tiffany/Sue	Style Description	lace lined cap sleeve blazer	Date PP Approved/By	0	
Dept. No.	355	Fabric	sophie twill/lace	Date TOP Approved/By	0	
Tech Designer	Beng Hook	Fiber Content	T/R/S 63/33/4	Status	development	

### PP SAMPLE

POM CODE	Points of Measure	TOL +/-	Target Spec Size M	Vendor 11/13	Difference vs. Target	Maurices 11.18	Difference vs. Target	Revised Spec
LTH100	Body Length from HPS	1/2	24 1/2	24 3/4	1/4	24 1/2	0	24 1/2
LTH102	Body Length from Center Back Neck	1/2	22 1/2	22 3/4	1/4	22 3/4	1/4	22 1/2
BST101	Chest width @ 1" below armhole	1/2	17 3/4	18 3/8	5/8	18 1/2	3/4	17 3/4
WST200	Waist position from HPS	0	15	15	0	15	0	15
WST100	Waist width	1/2	15 1/2	16	1/2	15 7/8	3/8	15 1/2
NCK108	Neck Width from HPS	1/4	6 1/2	7	1/2	7 1/8	5/8	6 1/2
NCK200	Front neck drop from HPS	1/4	19	19 1/2	1/2	19 1/2	1/2	19
NCK300	Back neck drop from HPS	1/8	1 1/2	1 1/2	0	3/4	1/4	1/2
ACR300	Across Shoulder, back	3/8	14	14 1/2	1/2	14 7/8	7/8	14
ACR102	Across Front @ 5" down from HPS	3/8	13	13 1/4	1/4	13 1/4	1/4	13
ACR202	Across Back @ 5" down from HPS	3/8	13 5/8	14	3/8	14 1/8	1/2	13 5/8
ARM103	Armhole Straight	1/4	8 1/2	9	1/2	9	1/2	8 1/2
SLV404	Sleeve opening width, S/S	3/8	6 3/4	6 3/4	0	6 3/4	0	6 3/4
SLV103	Sleeve length from shoulder, S/S	1/4	6 1/2	6 3/4	1/4	6 5/8	1/8	6 1/2

**STATUS:** Rejected: submit revised PP sample with following corrections/changes.  
Sample is out of tolerance at too many POMs and does not fit like 2nd fit sample.

**FIT COMMENTS:**

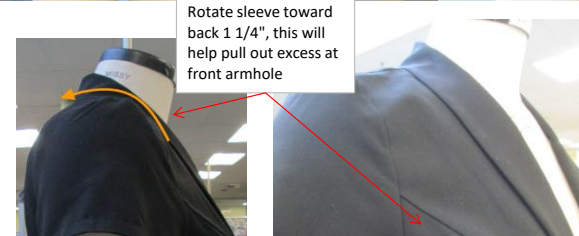
- 1) Chest width: Go back to spec.
- 2) Neck width from HPS: Go back to spec.
- 3) Front neck drop: go back to spec.
- 4) Back neck drop: Go back to spec.
- 5) Across shoulder: Go back to spec.
- 6) Across Back: Go back to spec.
- 7) Armhole straight: Go back to spec.
- 8) Rotate sleeve toward back, rotate 1 1/4" total, this will help the sleeve fit better and pull out excess at front armhole. See photo. Keep shirring centered at shoulder seam.

**CONSTRUCTION COMMENTS:**

- 1) Watch blind hem tension.
- 2) Front pockets angle down at center front. Raise CF pocket edge 1/4" to straighten on body.
- 3) Center front bottom hem is uneven, please watch sewing



Pocket is too angled.  
Raise CF pocket edge



Rotate sleeve toward back 1 1/4", this will help pull out excess at front armhole