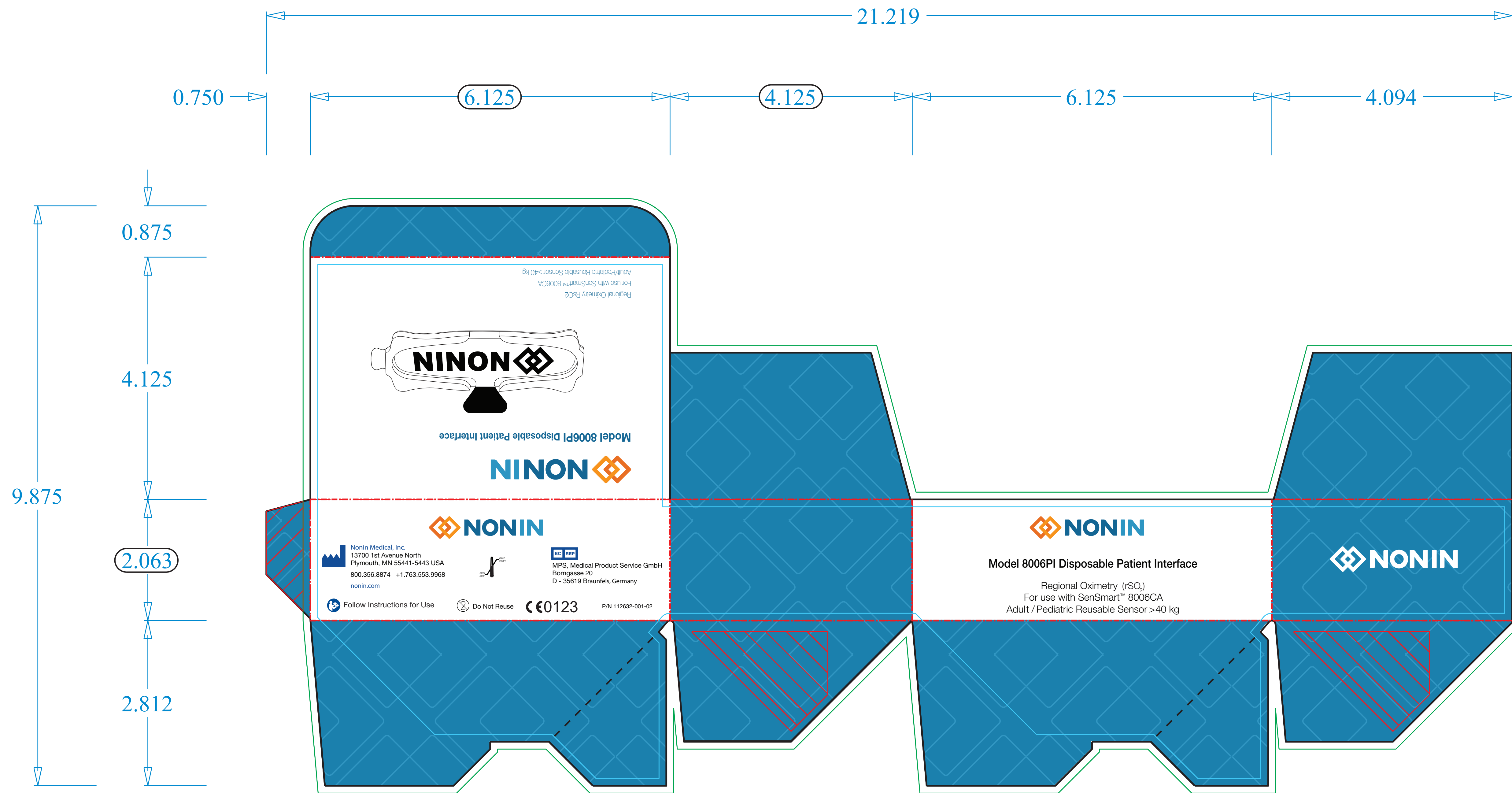


REVISION HISTORY

REV	CR/CO	DESCRIPTION	DATE	CR/CO ORIGINATOR
A	-	MANUFACTURING RELEASE	-	KEW



- KNIFE: _____
- CREASE: - - - - -
- BLEED: _____
- NO COPY: _____
- GLUE AREA:

NOTES:

1. MATERIAL: 28 PT C15 SBS
2. INDICATES KEY INSPECTION DIMENSION
3. STYLE: TTAB
4. ARTWORK PER NONIN ELECTRONIC FILE 112632-001-02.eps.
5. COLORS: BLACK, PMS 2945 (BLUE)
6. AQUEOUS COATING
7. VIEW: OUTSIDE
8. REFER TO 3156-XXX (SYMBOL CATALOG) FOR SYMBOL REFERENCE.

UNLESS OTHERWISE SPECIFIED DIMENSIONS ARE IN INCHES TOLERANCES ON: .X ± .1 .XX ± .05 .XXX ± .032 ANGLES ± 1°	DRAWN BY KEW	DATE 12/21/17	NONIN MEDICAL, INC. PLYMOUTH, MN CONFIDENTIAL <small>The information disclosed herein is confidential and is proprietary to Nonin Medical, Inc. Nonin reserves all patent, proprietary and reproduction rights therein. This information is not to be used or disclosed to any persons without the express written authorization of a representative of Nonin Medical, Inc.</small>	
	CHECKED BY	DATE	TITLE CARTON, 8006PI, 20 PK	
THIRD ANGLE PROJECTION 	ELECTRONIC FILE NAME 112632-XXX REV A.ai		SIZE B	REV A
	DRAWING CONFORMS TO ANSI Y 14.5M-1994		DWG NO 112632-XXX	
	DO NOT SCALE DRAWING		SCALE NTS	SHEET 1 OF 1