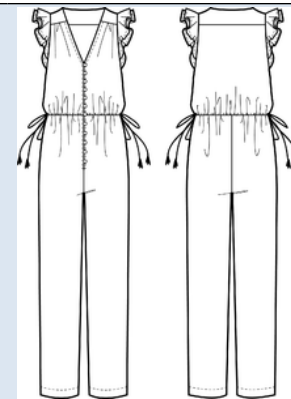


**PLM Product #:** 129100  
**Product Description:** BANJAN COLLAB FRANCESCA JUMPSUIT  
**Brand:** Madewell  
**Sub-brand:**  
**Gender / Age:** Womens  
**Department:** W DRESSES  
**Class:** W DRESSES WOVEN  
**Sub Class:** W DRESS WVN JUMPSUIT  
**Season:** Madewell Womens Apparel Summer 2020

**Product Carryover:** No  
**Primary Material:** Voile JUMPSUIT BANJANAN VOILE  
**Material Supplier:** LI & FUNG  
**Supplier Article #:** LFI-NP-005  
**Source:** LI & FUNG GAURAV INTERNATIONAL\_  
**Spec Status:** Final  
**Photo Approved:** No  
**Size Definition:** Missy--Numeric:00-24  
**Base Size:** 6

**Designer:** Sasha Shver**Tech Designer:** Rebecca Marcus**Sourcing Manager:** Karell Lardizabal**Secondary Designer:** Alexandra Weimar**Reference Style 1:****Reference Style 2:****Extended Size Parent:****Comments:**

TO LF INDIA GUARAV  
FROM CAETLYN

02.20.2020: UPDATED THIGH CIRC. SPEC. PENDING ELASTIC BUNGEE ARTICLE # IN BOM.  
\*PENDING SKETCH UPDATE\*

02.19.2020: 1ST FIT IS APPROVED W/CORRECTIONS!

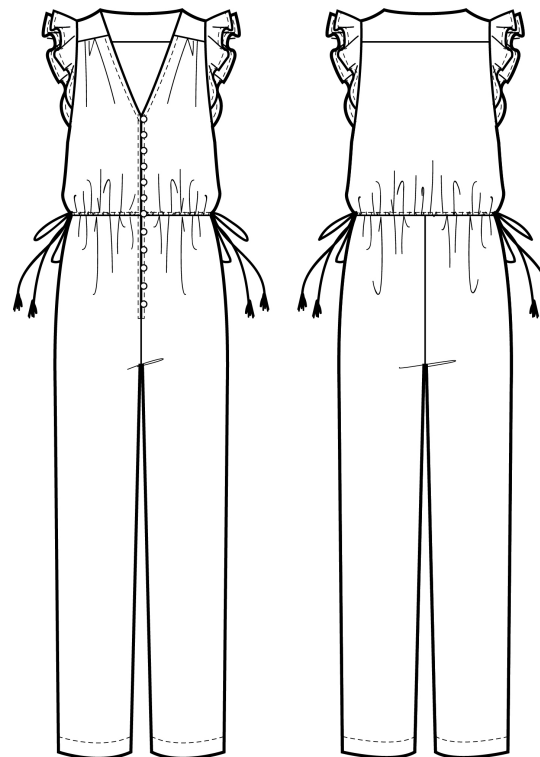
\*MUST SUBMIT REF. SMPL WITH UPDATED CAT EYE ELASTIC BUTTON LOOP TRIM/CONSTRUCTION FOR OUR RECORD WITHIN 14 DAYS!

\*SUBMIT TOP WITHIN 10 DAYS OF FTCY X-DATE INCL. EPATTERN

12.20.19: SUBMIT 1ST FIT SAMPLE WITHIN 14 DAYS!

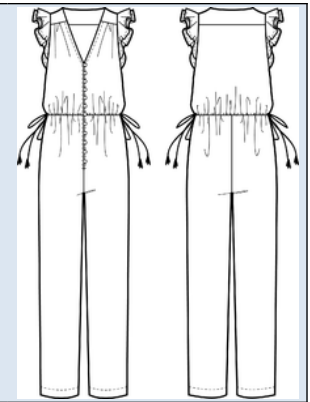
\*FIT A2- PHOTO APPROVED!

08.01.19: PROTO FIT \*CROTCH LEVEL AND WAIST PLACEMENT IS HIGH\*LOWER CF WAIST LEVEL 1/2" AND ENSURE WAIST PLACEMENT IS TRUED AROUND BODY\*TAPER X-SHLDR AS PINNED 1" TOTAL \*ADD A 2ND RUFFLE TO SHOULDER ON TOP TO LAYER\*RUFFLE WIDTH IS -1/2" NARROWER @ OVERARM BLENDING ACCORDINGLY THROUGHOUT ENTIRE RUFFLE---RUFFLE SHOULD BE SHIRRED ALONG ENTIRE ARMHOLE\*ARMHOLE CONSTRUCTION SHOULD BE CLEAN FINISHED W/ 1/4" SELF BIAS TAPE @ INTERIOR\*DRAWSTRINGS @ WAIST SHOULD BE 1/4" ROUND SPAGHETTI---NOT FLAT \*LENGTHEN DRAWSTRINGS +1 1/2" E.\*OPEN LEG OPENING +3 1/2" TO FILL IN LEG SHAPE BLENDING TO 0" @ LOW THIGH \*TASSELS SHOULD BE 1 1/4"\*BUTTON LOOPS SHOULD BE CAT EYE SHAPE NOT 'BUNNY EAR'





<b>PLM Product #:</b>	129100	<b>Product Carryover:</b>	No
<b>Product Description:</b>	BANJAN COLLAB FRANCESCA JUMPSUIT	<b>Primary Material:</b>	Voile JUMPSUIT BANJANAN VOILE
<b>Brand:</b>	Madewell	<b>Material Supplier:</b>	LI & FUNG
<b>Sub-brand:</b>		<b>Supplier Article #:</b>	LFI-NP-005
<b>Gender / Age:</b>	Womens	<b>Source:</b>	LI & FUNG GAURAV INTERNATIONAL_
<b>Department:</b>	W DRESSES	<b>Spec Status:</b>	Final
<b>Class:</b>	W DRESSES WOVEN	<b>Photo Approved:</b>	No
<b>Sub Class:</b>	W DRESS WVN JUMPSUIT	<b>Size Definition:</b>	Missy--Numeric:00-24
<b>Season:</b>	Madewell Womens Apparel Summer 2020	<b>Base Size:</b>	6

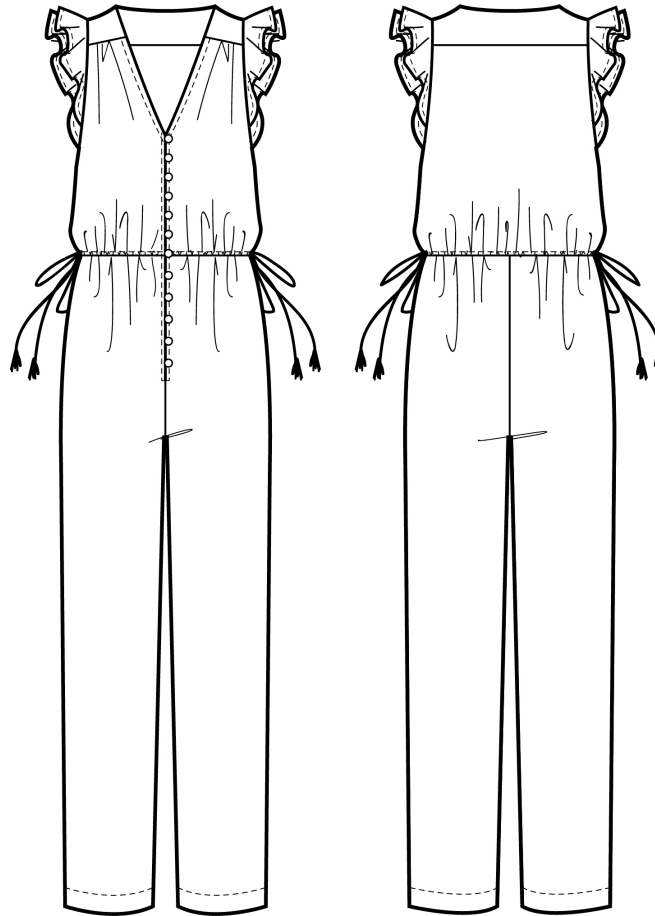
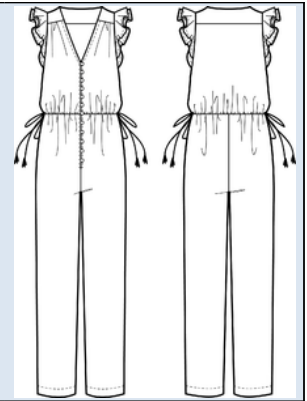


Color	Colorway #	Colorway Carry Over	PLM Colorway Status	Colorway Merchant Status	Initial Delivery	SAP Style # (All Brands)
PP0109 Ban Parrot Vintage Parchment	1067419	No	Development	Planned Buy	05/20/2020	AO308



**PLM Product #:** 129100  
**Product Description:** BANJAN COLLAB FRANCESCA JUMPSUIT  
**Brand:** Madewell  
**Sub-brand:**  
**Gender / Age:** Womens  
**Department:** W DRESSES  
**Class:** W DRESSES WOVEN  
**Sub Class:** W DRESS WVN JUMPSUIT  
**Season:** Madewell Womens Apparel Summer 2020

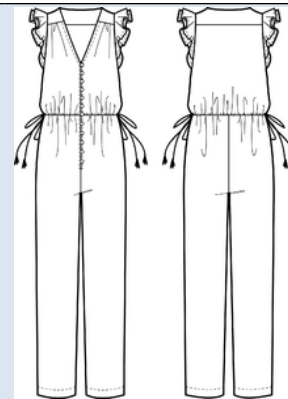
**Product Carryover:** No  
**Primary Material:** Voile JUMPSUIT BANJANAN VOILE  
**Material Supplier:** LI & FUNG  
**Supplier Article #:** LFI-NP-005  
**Source:** LI & FUNG GAURAV INTERNATIONAL\_  
**Spec Status:** Final  
**Photo Approved:** No  
**Size Definition:** Missy--Numeric:00-24  
**Base Size:** 6





**PLM Product #:** 129100  
**Product Description:** BANJAN COLLAB FRANCESCA JUMPSUIT  
**Brand:** Madewell  
**Sub-brand:**  
**Gender / Age:** Womens  
**Department:** W DRESSES  
**Class:** W DRESSES WOVEN  
**Sub Class:** W DRESS WVN JUMPSUIT  
**Season:** Madewell Womens Apparel Summer 2020

**Product Carryover:** No  
**Primary Material:** Voile JUMPSUIT BANJANAN VOILE  
**Material Supplier:** LI & FUNG  
**Supplier Article #:** LFI-NP-005  
**Source:** LI & FUNG GAURAV INTERNATIONAL\_  
**Spec Status:** Final  
**Photo Approved:** No  
**Size Definition:** Missy--Numeric:00-24  
**Base Size:** 6



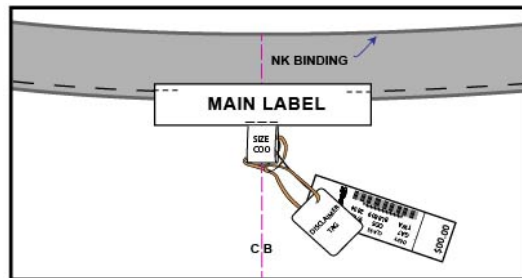
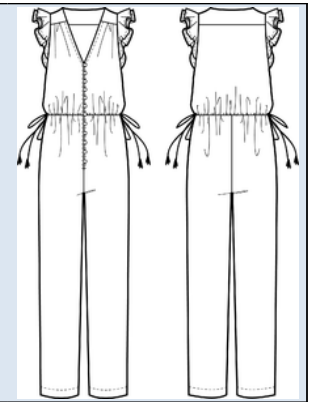
**Construction Detail - 001 : 129100 BANJAN COLLAB FRANCESCA JUMPSUIT**

Constr. #	Part	Construction Detail	Comments
	BODICE CONSTRUCTION		
		NECKLINE	- FINISH W/ 1/4" SELF BIAS TAPE, BACKSTITCH & 1/4" SNTS AROUND ENTIRE NECKLINE EXTENDING TOWARDS CF PLACKET
		CF CLOSURE & UNDERPLACKET	- FINISH CF EDGE W/ 1/4" SELF BIAS TAPE, BACKSTITCH & 1/4" SNTS. - 3/4" WIDE SEPARATE SELF FOLD BACK FACING CONSTRUCTION. INSERT UNDER PLACKET BETWEEN SHELL & BINDING AT CF EDGE ON WRR'S LEFT SIDE. - EDGESTITCH ALONG SEAM & OUTER EDGE OF UNDER PLACKET INCLUDING UNDERPLACKET/ SELF FOLD BACK FACING - 12X TOTAL SELF COVERED CF BUTTONS + ELASTIC BUNGEE CAT EYE LOOPS ALONG CF BODICE. *SPACING* *ABOVE WAIST CHANNEL SPACING BUTTON 1 3/16" FROM BTTN CENTER TO BTTN = 6X TOTAL BUTTONS ABOVE WAIST CHANNEL *CENTER 7TH BTTN @ WAIST CHANNEL *BUTTONS ALONG RISE WILL BE SPACED 1 7/16" APART FROM BTTN CENTER TO BTTN CENTER * LAST BUTTON= SPACED 1" FROM PLACKET OPENING END TO BTTN CENTER *ADJUST BUTTON SPACING ACCORDINGLY *
		SHOULDER SEAM	- SAFETY STITCH & PRESS SA BACK. *INSERT LIGHT SHIRRING STARTING/STOPPING 1/2" FROM AH AND NECKLINE SHIRRING RATIO = 1.75 : 1.0

Construction Detail - 001 : 129100 BANJAN COLLAB FRANCESCA JUMPSUIT			
Constr. #	Part	Construction Detail	Comments
		ARMHOLE + SHOULDER RUFFLES	<ul style="list-style-type: none"> <li>- FINISH W/ 1/4" SELF BIAS TAPE, BACKSTITCH &amp; 1/4" SNTS AROUND ENTIRE ARMHOLE, CLEAN FINISHING RUFFLE LAYERS ALONG OVERARM</li> <li>- UNDERLAYER RUFFLE- LONGER: SELF RUFFLE INSERTED BETWEEN SHELL &amp; BINDING AT NECK EDGE. TAPER RUFFLE AT 1 3/4" FROM SIDE SEAM.</li> <li>-TOP LAYER RUFFLE- SHORTER: -SELF RUFFLE INSERTED BETWEEN SHELL, UNDER LAYER RUFFLE &amp; BINDING AT NECK EDGE. TAPER RUFFLE AT 2 3/4" FROM SIDE SEAM</li> <li>1 3/4" FROM SIDE SEAM.</li> <li>- FINISH RUFFLE EDGE WITH 1/8" BABYHEM</li> <li>1.5 : 1.0 SHIRRING RATIO</li> </ul>
		WAIST SEAM + DRAWCORD TIES	<ul style="list-style-type: none"> <li>- BODICE EXTENDS INTO A 3/8" SELF FOLDED WAIST CHANNEL; PANTS ARE INSERTED BETWEEN CHANNEL LAYERS AND CLEAN FINISHED @ INTERIOR AND FINISHED WITH EDGESTITCH @ TOP AND BOTTOM SIDES</li> <li>-DRAWCORD TIES EXIT @ CHANNEL OUTSEAM/ SIDE SEAM AND ARE TIED INTO A BOW</li> <li>-DRAWCORD IS 1/8" SELF FOLDED SPAGHETTI CLEAN FINISHED INTO A TASSEL TRIM @ TIE END</li> <li>*CF WAIST: DRAWCORD &amp; ELASTIC ARE INSERTED ALONG CHANNEL AND BARTACKED @ CF PLACKET TOP STITCH JOIN</li> <li>*CB WAIST: DRAWCORD IS BARTACKED VERTICALLY @ CB WAIST X BK RISE JOIN; INSERT DRAWCORD AND ELASTIC AND TIE W/ CF WAIST DRAWCORDS @ SS/OUTSEAM</li> </ul>
		SIDSEAM	- SAFETY STITCH & PRESS SA BACK.
		CB YOKE 2-PLY	2-PLY CB YOKE; INTERIOR IS CLEAN FINISHED TO SHELL WITH POCKETING FABRIC.
	PANT		
		FRONT & BACK RISE	- SAFETY STITCH & PRESS SA TWDS WRR'S LEFT SIDE.
		SIDSEAM	- SAFESTY STITCH & PRESS SA BACK
		PANT INSEAM	- SAFETY STITCH & PRESS SA BACK
		HEM	BENDBACK WITH 1 1/4" SNTS
		SHIPPED	DRAWCORD CINCHED AND TIED IN A BOW @ EACH WR/WL WAIST SIDE SEAM

**PLM Product #:** 129100  
**Product Description:** BANJAN COLLAB FRANCESCA JUMPSUIT  
**Brand:** Madewell  
**Sub-brand:**  
**Gender / Age:** Womens  
**Department:** W DRESSES  
**Class:** W DRESSES WOVEN  
**Sub Class:** W DRESS WVN JUMPSUIT  
**Season:** Madewell Womens Apparel Summer 2020

**Product Carryover:** No  
**Primary Material:** Voile JUMPSUIT BANJANAN VOILE  
**Material Supplier:** LI & FUNG  
**Supplier Article #:** LFI-NP-005  
**Source:** LI & FUNG GAURAV INTERNATIONAL\_  
**Spec Status:** Final  
**Photo Approved:** No  
**Size Definition:** Missy--Numeric:00-24  
**Base Size:** 6



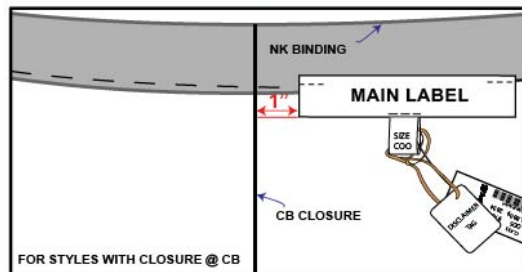
**MAIN LABELS: (FOR NECK BINDING)**  
 - SET MAIN LABEL TOP EDGE @ CB NK BAND / FACING BOTTOM EDGE  
 - THREAD COLOR = SEE BOM  
 - 1/8" HORIZONTAL MACHINE TOP STITCH ON TOP CORNERS ONLY  
 - TOPSTITCH THRU ALL LAYERS

**SIZE / COO LABEL:**  
 - SEW CENTERED UNDER MAIN LABEL W/ EDGESTITCH DTM MAIN LABEL GROUND COLOR

**PRICE TAG:**  
 - GUN THRU SIZE / COO LABEL  
 \*\*\* (DO NOT GUN THRU TEXT!)

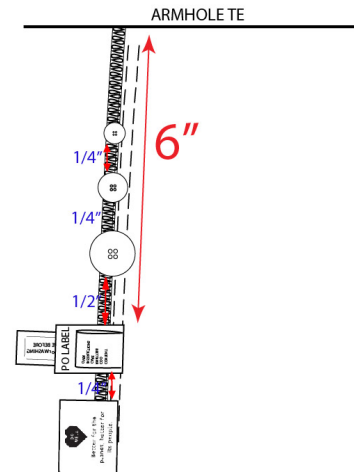
**DISCLAIMER TAG: (IF NEEDED)**  
 - LOOP THROUGH SIZE LABEL

\*\*\* FOR STYLES WITH CB CLOSURE \*\*\*  
 - SET MAIN LABEL 1" FROM CB CLOSURE EDGE



FOR STYLES WITH CLOSURE @ CB

WEARER'S FRONT INTERIOR VIEW



**CARE LABEL / SENSOR LABEL PLACEMENT:**

**USE: JUMPERS WITHOUT WAIST SEAM**

**CARE CONTENT LABEL:**  
 - SET @ WRR'S LEFT INTERIOR SS 6" ARMHOLE TE

**DO WELL LABEL (IF NEEDED):**  
 - SET AT WEARER'S LEFT INTERIOR SS, 1/4" BELOW CARE & CONTENT LABEL

**PO LABEL (IF NEEDED):**  
 - SET AT WEARER'S LEFT INTERIOR SS, CENTERED BEHIND CARE/CONTENT LABEL

**EAS SENSORMATIC LABEL:**  
 - SEW BEHIND PO LABEL  
 - SEW WITH LABEL INFORMATION VISIBLE (AS SKETCH)

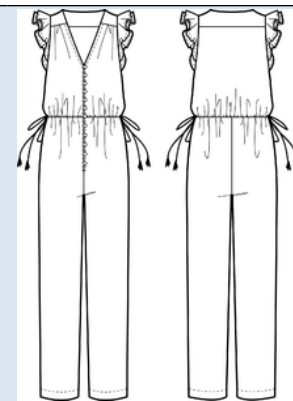
**EXTRA BUTTONS: (IF STYLE HAS BUTTONS)**  
 ~ SET BTTN RIM EDGE 1/2" ABOVE CARE / SENSOR LABEL EDGE  
 ~ SECURE BUTTONS THRU SEAM ALLOWANCE AT SS  
 ~ STACK BUTTONS VERTICALLY 1/4" APART EDGE TO EDGE  
 ~ SET BUTTONS FROM LARGEST BUTTON AT BOTTOM TO SMALLEST BUTTON AT TOP.

\*\*\* IF GARMENT IS WASHED  
 - PLS SEW SENSOR LBL AFTER WASH \*\*\*



**PLM Product #:** 129100  
**Product Description:** BANJAN COLLAB FRANCESCA JUMPSUIT  
**Brand:** Madewell  
**Sub-brand:**  
**Gender / Age:** Womens  
**Department:** W DRESSES  
**Class:** W DRESSES WOVEN  
**Sub Class:** W DRESS WVN JUMPSUIT  
**Season:** Madewell Womens Apparel Summer 2020

**Product Carryover:** No  
**Primary Material:** Voile JUMPSUIT BANJANAN VOILE  
**Material Supplier:** LI & FUNG  
**Supplier Article #:** LFI-NP-005  
**Source:** LI & FUNG GAURAV INTERNATIONAL\_  
**Spec Status:** Final  
**Photo Approved:** No  
**Size Definition:** Missy--Numeric:00-24  
**Base Size:** 6



**Measurement Set: 001 : 129100 BANJAN COLLAB FRANCESCA JUMPSUIT Sample Size: 6 UOM: Fractional in**

Section	POM #	POM Name	Criticality	Tol (+)	Tol (-)	00	0	2	4	6
		HPS= NECK INNER EDGE								
Front	A-FR256	Front Body Length from HPS to Waist Seam	Non-Critical	1/4	1/4	16	16 1/4	16 1/2	16 3/4	17
Back	A-BA251	CB Bodice Length - Top Edge to Waist Seam	Non-Critical	1/4	1/4	15 1/4	15 3/8	15 1/2	15 5/8	15 3/4
Placket	A-PL003	CF Placket Length - from v-Neck Top Edge	Non-Critical	1/4	1/4	14 3/4	15	15 1/4	15 1/2	15 3/4
Shoulder	A-SH018	Shoulder Seam Forward / Front Yoke	Non-Critical	0	0	1 5/8	1 5/8	1 5/8	1 5/8	1 5/8
Shoulder	A-SH016	Shoulder Slope	Non-Critical	0	0	1 1/8	1 1/8	1 1/8	1 1/8	1 1/8
Shoulder	A-SH002	Across Shoulder	Non-Critical	1/4	1/4	12	12 1/4	12 1/2	12 3/4	13
Front	A-FR040	Across Front 5" Below HPS - Not Including Slv Ruffle	Non-Critical	1/4	1/4	11 1/2	11 3/4	12	12 1/4	12 1/2
Back	A-BA044	Across Back Along Back Yoke Seam	Non-Critical	1/4	1/4	12	12 1/4	12 1/2	12 3/4	13
Back	A-BA099	Back Yoke Height from CB Neck Top Edge	Non-Critical	0	0	4 1/2	4 1/2	4 1/2	4 1/2	4 1/2
Sleeve	A-SL190	inner Sleeve Ruffle Width at Shoulder (Each)	Non-Critical	0	0	2	2	2	2	2
Chest	A-CH001	Chest Circumference 1" Below Armhole	Non-Critical	1/2	1/2	36	37	38	39	40
Armhole	A-AR001	Armhole Circumference	Non-Critical	1/4	1/4	18 1/4	18 3/4	19 1/4	19 3/4	20 1/4
Armhole	A-AR007	Armhole Straight - Seam to Seam	Non-Critical	1/8	1/8	8 1/4	8 7/16	8 5/8	8 13/16	9
Neck	A-NE016	Front Neck Drop from HPS (to Top Edge)	Non-Critical	1/8	1/8	9 3/8	9 7/16	9 1/2	9 9/16	9 5/8
Neck	A-NE008	Back Neck Drop from HPS	Non-Critical	1/8	1/8	3/4	3/4	3/4	3/4	3/4
Neck	A-NE005	Neck Width at HPS - Edge to Edge	Non-Critical	1/8	1/8	6	6 1/8	6 1/4	6 3/8	6 1/2
Placket	A-PL004	CF Under Placket Width	Non-Critical	0	0	3/4	3/4	3/4	3/4	3/4

Measurement Set: 001 : 129100 BANJAN COLLAB FRANCESCA JUMPSUIT Sample Size: 6 UOM: Fractional in										
Section	POM #	POM Name	Criticality	Tol (+)	Tol (-)	00	0	2	4	6
General - Details	A-GD023	Outer Ruffle Height Along Armhole	Non-Critical	0	0	1 3/8	1 3/8	1 3/8	1 3/8	1 3/8
Waist	A-WA021	Waist Circumference Along Waist Seam - Ties Tied / Cynched	Non-Critical	1/2	1/2	28 3/4	29 3/4	30 3/4	31 3/4	32 3/4
Waist	A-WA018	Waist Circumference (Extended)	Critical	1/2	1/2	38	39	40	41	42
Hip	A-HI052	Low Hip Placement 'X' Below Waist Seam	Non-Critical	0	0	8	8	8	8	8
Hip	A-HI063	Low Hip Circumference at 'X' Placement	Non-Critical	1/2	1/2	39 1/2	40 1/2	41 1/2	42 1/2	43 1/2
Rise	A-RI011	Front Rise from Top Edge - Along Curve	Non-Critical	1/4	1/4	12 3/8	12 5/8	12 7/8	13 1/8	13 3/8
Rise	A-RI012	Back Rise from Top Edge - Along Curve	Non-Critical	1/4	1/4	16 1/4	16 1/2	16 3/4	17	17 1/4
Thigh	A-TH022	Thigh Circumference 1" Below Crotch	Non-Critical	1/4	1/4	25	25 3/4	26 1/2	27 1/4	28
Knee	A-KN002	Knee Circumference 13" Below Crotch	Non-Critical	1/4	1/4	20	20 3/8	20 3/4	21 1/8	21 1/2
Leg	A-LE010	Leg Opening Circumference	Non-Critical	1/4	1/4	16 1/2	16 7/8	17 1/4	17 5/8	18
Leg	A-LE003	Regular Inseam Length	Non-Critical	1/2	1/2	25 1/2	25 1/2	25 1/2	25 1/2	25 1/2
Leg	A-LE002	PHOTO: Inseam Length	Non-Critical	1/2	1/2	26 1/4	26 1/4	26 1/4	26 1/4	26 1/4
Pocket	A-PO049	On-Seam Pocket Opening Length	Non-Critical	0	0	5 3/4	5 3/4	5 3/4	5 3/4	5 3/4
Pocket	A-PO050	On-Seam Pocket Placement Below Waist Seam	Non-Critical	0	0	2 1/4	2 1/4	2 1/4	2 1/4	2 1/4
Pocket	A-PO028	Pocket Bag Height- At Tallest Point	Non-Critical	0	0	11	11	11	11	11
Pocket	A-PO029	Pocket Bag Width- At Widest Point	Non-Critical	0	0	6 7/8	6 7/8	6 7/8	6 7/8	6 7/8
		Waist Elastic Tunnel Height		0	0	1/2	1/2	1/2	1/2	1/2
Waist	A-WA106	Waist Tie Width	Non-Critical	0	0	1/8	1/8	1/8	1/8	1/8
Waist	A-WA070	Waist Tie Length -e. Extended /Exposed- Excl. Tassel	Non-Critical	0	0	10 1/2	10 1/2	10 1/2	10 1/2	10 1/2
		Tassel Length		0	0	2 1/2	2 1/2	2 1/2	2 1/2	2 1/2

Measurement Set: 001 : 129100 BANJAN COLLAB FRANCESCA JUMPSUIT Sample Size: 6 UOM: Fractional in															
Section	POM #	POM Name	Criticality	Tol (+)	Tol (-)	6	8	10	12	14	16	18	20	22	24
		HPS= NECK INNER EDGE													
Front	A-FR256	Front Body Length from HPS to Waist Seam	Non-Critical	1/4	1/4	17	17 1/4	17 1/2	17 3/4	18	18 1/4	18 1/2	18 3/4	19 1/8	19 1/2
Back	A-BA251	CB Bodice Length - Top Edge to Waist Seam	Non-Critical	1/4	1/4	15 3/4	15 7/8	16	16 1/8	16 1/4	16 3/8	16 1/2	16 5/8	16 5/8	16 5/8
Placket	A-PL003	CF Placket Length - from v-Neck Top Edge	Non-Critical	1/4	1/4	15 3/4	16	16 1/4	16 1/2	16 3/4	17	17 1/4	17 1/2	17 7/8	18 1/4
Shoulder	A-SH018	Shoulder Seam Forward / Front Yoke	Non-Critical	0	0	1 5/8	1 5/8	1 5/8	1 5/8	1 5/8	1 5/8	1 5/8	1 5/8	1 5/8	1 5/8
Shoulder	A-SH016	Shoulder Slope	Non-Critical	0	0	1 1/8	1 1/8	1 1/8	1 1/8	1 1/4	1 1/4	1 3/8	1 3/8	1 3/8	1 3/8
Shoulder	A-SH002	Across Shoulder	Non-Critical	1/4	1/4	13	13 1/4	13 1/2	13 7/8	14 1/4	14 1/2	14 3/4	15	15 1/4	15 1/2
Front	A-FR040	Across Front 5" Below HPS - Not Including Slv Ruffle	Non-Critical	1/4	1/4	12 1/2	12 3/4	13	13 3/8	13 3/4	14 1/8	14 1/2	14 7/8	15 1/4	15 5/8
Back	A-BA044	Across Back Along Back Yoke Seam	Non-Critical	1/4	1/4	13	13 1/4	13 1/2	13 7/8	14 1/4	14 5/8	15	15 3/8	15 3/4	16 1/8
Back	A-BA099	Back Yoke Height from CB Neck Top Edge	Non-Critical	0	0	4 1/2	4 1/2	4 1/2	4 1/2	4 1/2	4 1/2	4 1/2	4 1/2	4 1/2	4 1/2
Sleeve	A-SL190	inner Sleeve Ruffle Width at Shoulder (Each)	Non-Critical	0	0	2	2	2	2	2	2	2	2	2	2
Chest	A-CH001	Chest Circumference 1" Below Armhole	Non-Critical	1/2	1/2	40	41	42	43 1/2	45	46 1/2	49 1/2	52	54 1/2	57
Armhole	A-AR001	Armhole Circumference	Non-Critical	1/4	1/4	20 1/4	20 3/4	21 3/8	22	22 5/8	23 1/4	24 1/8	25	25 5/8	26 1/4
Armhole	A-AR007	Armhole Straight - Seam to Seam	Non-Critical	1/8	1/8	9	9 3/16	9 7/16	9 11/16	9 15/16	10 3/16	10 7/16	10 11/16	10 13/16	10 15/16
Neck	A-NE016	Front Neck Drop from HPS (to Top Edge)	Non-Critical	1/8	1/8	9 5/8	9 11/16	9 3/4	9 13/16	9 7/8	9 15/16	9 15/16	9 15/16	10	10 1/16
Neck	A-NE008	Back Neck Drop from HPS	Non-Critical	1/8	1/8	3/4	3/4	3/4	3/4	3/4	7/8	7/8	7/8	15/16	1
Neck	A-NE005	Neck Width at HPS - Edge to Edge	Non-Critical	1/8	1/8	6 1/2	6 5/8	6 3/4	6 7/8	7	7 1/8	7 1/8	7 1/8	7 3/16	7 1/4
Placket	A-PL004	CF Under Placket Width	Non-Critical	0	0	3/4	3/4	3/4	3/4	3/4	3/4	3/4	3/4	3/4	3/4

Measurement Set: 001 : 129100 BANJAN COLLAB FRANCESCA JUMPSUIT Sample Size: 6 UOM: Fractional in

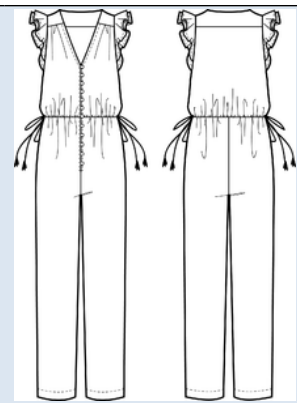
Section	POM #	POM Name	Criticality	Tol (+)	Tol (-)	6	8	10	12	14	16	18	20	22	24
General - Details	A-GD023	Outer Ruffle Height Along Armhole	Non-Critical	0	0	1 3/8	1 3/8	1 3/8	1 3/8	1 3/8	1 3/8	1 3/8	1 3/8	1 3/8	1 3/8
Waist	A-WA021	Waist Circumference Along Waist Seam - Ties Tied / Cynched	Non-Critical	1/2	1/2	32 3/4	33 3/4	34 3/4	36 1/4	37 3/4	39 1/4	42 1/4	44 3/4	47 1/4	49 3/4
Waist	A-WA018	Waist Circumference (Extended)	Critical	1/2	1/2	42	43	44	45 1/2	47	48 1/2	51 1/2	54	56 1/2	59
Hip	A-HI052	Low Hip Placement 'X' Below Waist Seam	Non-Critical	0	0	8	8	8	8	8	8	8	8	8	8
Hip	A-HI063	Low Hip Circumference at 'X' Placement	Non-Critical	1/2	1/2	43 1/2	44 1/2	45 1/2	47	48 1/2	50	53	55 1/2	58	60 1/2
Rise	A-RI011	Front Rise from Top Edge - Along Curve	Non-Critical	1/4	1/4	13 3/8	13 5/8	13 7/8	14 1/4	14 5/8	15	15 3/8	15 7/8	16 3/8	16 7/8
Rise	A-RI012	Back Rise from Top Edge - Along Curve	Non-Critical	1/4	1/4	17 1/4	17 5/8	18	18 1/2	19 1/4	20 1/8	21	21 3/4	22 1/2	23 1/4
Thigh	A-TH022	Thigh Circumference 1" Below Crotch	Non-Critical	1/4	1/4	28	28 3/4	29 1/2	30 5/8	31 3/4	33	35 1/2	37 1/2	39 1/2	41 1/2
Knee	A-KN002	Knee Circumference 13" Below Crotch	Non-Critical	1/4	1/4	21 1/2	21 7/8	22 1/4	22 7/8	23 1/2	24 3/8	25 5/8	26 5/8	27 5/8	28 5/8
Leg	A-LE010	Leg Opening Circumference	Non-Critical	1/4	1/4	18	18 3/8	18 3/4	19 3/8	20	20 7/8	22 1/8	23 1/8	24 1/8	25 1/8
Leg	A-LE003	Regular Inseam Length	Non-Critical	1/2	1/2	25 1/2	25 1/2	25 1/2	25 1/2	25 1/2	25 1/2	25 1/2	25 1/2	25 1/2	25 1/2
Leg	A-LE002	PHOTO: Inseam Length	Non-Critical	1/2	1/2	26 1/4	26 1/4	26 1/4	26 1/4	26 1/4	26 1/4	26 1/4	26 1/4	26 1/4	26 1/4
Pocket	A-PO049	On-Seam Pocket Opening Length	Non-Critical	0	0	5 3/4	5 3/4	5 3/4	5 3/4	5 3/4	5 3/4	5 3/4	5 3/4	5 3/4	5 3/4
Pocket	A-PO050	On-Seam Pocket Placement Below Waist Seam	Non-Critical	0	0	2 1/4	2 1/4	2 1/4	2 1/4	2 1/4	2 1/4	2 1/4	2 1/4	2 1/4	2 1/4
Pocket	A-PO028	Pocket Bag Height- At Tallest Point	Non-Critical	0	0	11	11	11	11	11	11	11	11	11	11
Pocket	A-PO029	Pocket Bag Width- At Widest Point	Non-Critical	0	0	6 7/8	6 7/8	6 7/8	6 7/8	6 7/8	6 7/8	6 7/8	6 7/8	6 7/8	6 7/8
		Waist Elastic Tunnel Height		0	0	1/2	1/2	1/2	1/2	1/2	1/2	1/2	1/2	1/2	1/2

Measurement Set: 001 : 129100 BANJAN COLLAB FRANCESCA JUMPSUIT Sample Size: 6 UOM: Fractional in															
Section	POM #	POM Name	Criticality	Tol (+)	Tol (-)	6	8	10	12	14	16	18	20	22	24
Waist	A-WA106	Waist Tie Width	Non-Critical	0	0	1/8	1/8	1/8	1/8	1/8	1/8	1/8	1/8	1/8	1/8
Waist	A-WA070	Waist Tie Length - e. Extended /Exposed- Excl. Tassel	Non-Critical	0	0	10 1/2	10 1/2	10 1/2	10 1/2	10 1/2	10 1/2	10 1/2	10 1/2	10 1/2	10 1/2
		Tassel Length		0	0	2 1/2	2 1/2	2 1/2	2 1/2	2 1/2	2 1/2	2 1/2	2 1/2	2 1/2	2 1/2



**PLM Product #:** 129100  
**Product Description:** BANJAN COLLAB FRANCESCA JUMPSUIT  
**Brand:** Madewell  
**Sub-brand:**  
**Gender / Age:** Womens  
**Department:** W DRESSES  
**Class:** W DRESSES WOVEN  
**Sub Class:** W DRESS WVN JUMPSUIT  
**Season:** Madewell Womens Apparel Summer 2020

**Product Carryover:** No  
**Primary Material:** Voile JUMPSUIT BANJANAN VOILE  
**Material Supplier:** LI & FUNG  
**Supplier Article #:** LFI-NP-005  
**Source:** LI & FUNG GAURAV INTERNATIONAL\_  
**Spec Status:** Final  
**Photo Approved:** No  
**Size Definition:** Missy--Numeric:00-24  
**Base Size:** 6



**Measurement Set: 001 : 129100 BANJAN COLLAB FRANCESCA JUMPSUIT Sample Size: 6 UOM: Fractional in**

Section	POM #	POM Name	Criticality	Tol (+)	Tol (-)	00	0	2	4	6
		HPS= NECK INNER EDGE								
Front	A-FR256	Front Body Length from HPS to Waist Seam	Non-Critical	1/4	1/4	- 1/4	- 1/4	- 1/4	- 1/4	0
Back	A-BA251	CB Bodice Length - Top Edge to Waist Seam	Non-Critical	1/4	1/4	- 1/8	- 1/8	- 1/8	- 1/8	0
Placket	A-PL003	CF Placket Length - from v-Neck Top Edge	Non-Critical	1/4	1/4	- 1/4	- 1/4	- 1/4	- 1/4	0
Shoulder	A-SH018	Shoulder Seam Forward / Front Yoke	Non-Critical	0	0	0	0	0	0	0
Shoulder	A-SH016	Shoulder Slope	Non-Critical	0	0	0	0	0	0	0
Shoulder	A-SH002	Across Shoulder	Non-Critical	1/4	1/4	- 1/4	- 1/4	- 1/4	- 1/4	0
Front	A-FR040	Across Front 5" Below HPS - Not Including Slv Ruffle	Non-Critical	1/4	1/4	- 1/4	- 1/4	- 1/4	- 1/4	0
Back	A-BA044	Across Back Along Back Yoke Seam	Non-Critical	1/4	1/4	- 1/4	- 1/4	- 1/4	- 1/4	0
Back	A-BA099	Back Yoke Height from CB Neck Top Edge	Non-Critical	0	0	0	0	0	0	0
Sleeve	A-SL190	inner Sleeve Ruffle Width at Shoulder (Each)	Non-Critical	0	0	0	0	0	0	0
Chest	A-CH001	Chest Circumference 1" Below Armhole	Non-Critical	1/2	1/2	-1	-1	-1	-1	0
Armhole	A-AR001	Armhole Circumference	Non-Critical	1/4	1/4	- 1/2	- 1/2	- 1/2	- 1/2	0
Armhole	A-AR007	Armhole Straight - Seam to Seam	Non-Critical	1/8	1/8	- 3/16	- 3/16	- 3/16	- 3/16	0
Neck	A-NE016	Front Neck Drop from HPS (to Top Edge)	Non-Critical	1/8	1/8	- 1/16	- 1/16	- 1/16	- 1/16	0
Neck	A-NE008	Back Neck Drop from HPS	Non-Critical	1/8	1/8	0	0	0	0	0
Neck	A-NE005	Neck Width at HPS - Edge to Edge	Non-Critical	1/8	1/8	- 1/8	- 1/8	- 1/8	- 1/8	0
Placket	A-PL004	CF Under Placket Width	Non-Critical	0	0	0	0	0	0	0

Measurement Set: 001 : 129100 BANJAN COLLAB FRANCESCA JUMPSUIT Sample Size: 6 UOM: Fractional in

Section	POM #	POM Name	Criticality	Tol (+)	Tol (-)	00	0	2	4	6
General - Details	A-GD023	Outer Ruffle Height Along Armhole	Non-Critical	0	0	0	0	0	0	0
Waist	A-WA021	Waist Circumference Along Waist Seam - Ties Tied / Cynched	Non-Critical	1/2	1/2	-1	-1	-1	-1	0
Waist	A-WA018	Waist Circumference (Extended)	Critical	1/2	1/2	-1	-1	-1	-1	0
Hip	A-HI052	Low Hip Placement 'X' Below Waist Seam	Non-Critical	0	0	0	0	0	0	0
Hip	A-HI063	Low Hip Circumference at 'X' Placement	Non-Critical	1/2	1/2	-1	-1	-1	-1	0
Rise	A-RI011	Front Rise from Top Edge - Along Curve	Non-Critical	1/4	1/4	- 1/4	- 1/4	- 1/4	- 1/4	0
Rise	A-RI012	Back Rise from Top Edge - Along Curve	Non-Critical	1/4	1/4	- 1/4	- 1/4	- 1/4	- 1/4	0
Thigh	A-TH022	Thigh Circumference 1" Below Crotch	Non-Critical	1/4	1/4	- 3/4	- 3/4	- 3/4	- 3/4	0
Knee	A-KN002	Knee Circumference 13" Below Crotch	Non-Critical	1/4	1/4	- 3/8	- 3/8	- 3/8	- 3/8	0
Leg	A-LE010	Leg Opening Circumference	Non-Critical	1/4	1/4	- 3/8	- 3/8	- 3/8	- 3/8	0
Leg	A-LE003	Regular Inseam Length	Non-Critical	1/2	1/2	0	0	0	0	0
Leg	A-LE002	PHOTO: Inseam Length	Non-Critical	1/2	1/2	0	0	0	0	0
Pocket	A-PO049	On-Seam Pocket Opening Length	Non-Critical	0	0	0	0	0	0	0
Pocket	A-PO050	On-Seam Pocket Placement Below Waist Seam	Non-Critical	0	0	0	0	0	0	0
Pocket	A-PO028	Pocket Bag Height- At Tallest Point	Non-Critical	0	0	0	0	0	0	0
Pocket	A-PO029	Pocket Bag Width- At Widest Point	Non-Critical	0	0	0	0	0	0	0
		Waist Elastic Tunnel Height		0	0	0	0	0	0	0
Waist	A-WA106	Waist Tie Width	Non-Critical	0	0	0	0	0	0	0
Waist	A-WA070	Waist Tie Length -e. Extended /Exposed- Excl. Tassel	Non-Critical	0	0	0	0	0	0	0
		Tassel Length		0	0	0	0	0	0	0

Measurement Set: 001 : 129100 BANJAN COLLAB FRANCESCA JUMPSUIT Sample Size: 6 UOM: Fractional in															
Section	POM #	POM Name	Criticality	Tol (+)	Tol (-)	6	8	10	12	14	16	18	20	22	24
		HPS= NECK INNER EDGE													
Front	A-FR256	Front Body Length from HPS to Waist Seam	Non-Critical	1/4	1/4	0	1/4	1/4	1/4	1/4	1/4	1/4	1/4	3/8	3/8
Back	A-BA251	CB Bodice Length - Top Edge to Waist Seam	Non-Critical	1/4	1/4	0	1/8	1/8	1/8	1/8	1/8	1/8	1/8	0	0
Placket	A-PL003	CF Placket Length - from v-Neck Top Edge	Non-Critical	1/4	1/4	0	1/4	1/4	1/4	1/4	1/4	1/4	1/4	3/8	3/8
Shoulder	A-SH018	Shoulder Seam Forward / Front Yoke	Non-Critical	0	0	0	0	0	0	0	0	0	0	0	0
Shoulder	A-SH016	Shoulder Slope	Non-Critical	0	0	0	0	0	0	1/8	0	1/8	0	0	0
Shoulder	A-SH002	Across Shoulder	Non-Critical	1/4	1/4	0	1/4	1/4	3/8	3/8	1/4	1/4	1/4	1/4	1/4
Front	A-FR040	Across Front 5" Below HPS - Not Including Slv Ruffle	Non-Critical	1/4	1/4	0	1/4	1/4	3/8	3/8	3/8	3/8	3/8	3/8	3/8
Back	A-BA044	Across Back Along Back Yoke Seam	Non-Critical	1/4	1/4	0	1/4	1/4	3/8	3/8	3/8	3/8	3/8	3/8	3/8
Back	A-BA099	Back Yoke Height from CB Neck Top Edge	Non-Critical	0	0	0	0	0	0	0	0	0	0	0	0
Sleeve	A-SL190	inner Sleeve Ruffle Width at Shoulder (Each)	Non-Critical	0	0	0	0	0	0	0	0	0	0	0	0
Chest	A-CH001	Chest Circumference 1" Below Armhole	Non-Critical	1/2	1/2	0	1	1	1 1/2	1 1/2	1 1/2	3	2 1/2	2 1/2	2 1/2
Armhole	A-AR001	Armhole Circumference	Non-Critical	1/4	1/4	0	1/2	5/8	5/8	5/8	5/8	7/8	7/8	5/8	5/8
Armhole	A-AR007	Armhole Straight - Seam to Seam	Non-Critical	1/8	1/8	0	3/16	1/4	1/4	1/4	1/4	1/4	1/4	1/8	1/8
Neck	A-NE016	Front Neck Drop from HPS (to Top Edge)	Non-Critical	1/8	1/8	0	1/16	1/16	1/16	1/16	1/16	0	0	1/16	1/16
Neck	A-NE008	Back Neck Drop from HPS	Non-Critical	1/8	1/8	0	0	0	0	0	1/8	0	0	1/16	1/16
Neck	A-NE005	Neck Width at HPS - Edge to Edge	Non-Critical	1/8	1/8	0	1/8	1/8	1/8	1/8	1/8	0	0	1/16	1/16
Placket	A-PL004	CF Under Placket Width	Non-Critical	0	0	0	0	0	0	0	0	0	0	0	0

Measurement Set: 001 : 129100 BANJAN COLLAB FRANCESCA JUMPSUIT Sample Size: 6 UOM: Fractional in

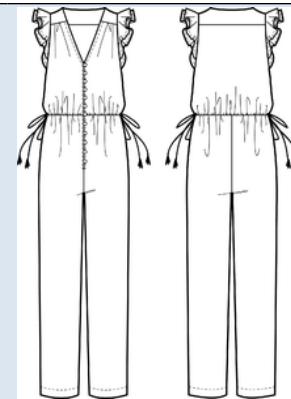
Section	POM #	POM Name	Criticality	Tol (+)	Tol (-)	6	8	10	12	14	16	18	20	22	24
General - Details	A-GD023	Outer Ruffle Height Along Armhole	Non-Critical	0	0	0	0	0	0	0	0	0	0	0	0
Waist	A-WA021	Waist Circumference Along Waist Seam - Ties Tied / Cynched	Non-Critical	1/2	1/2	0	1	1	1 1/2	1 1/2	1 1/2	3	2 1/2	2 1/2	2 1/2
Waist	A-WA018	Waist Circumference (Extended)	Critical	1/2	1/2	0	1	1	1 1/2	1 1/2	1 1/2	3	2 1/2	2 1/2	2 1/2
Hip	A-HI052	Low Hip Placement 'X' Below Waist Seam	Non-Critical	0	0	0	0	0	0	0	0	0	0	0	0
Hip	A-HI063	Low Hip Circumference at 'X' Placement	Non-Critical	1/2	1/2	0	1	1	1 1/2	1 1/2	1 1/2	3	2 1/2	2 1/2	2 1/2
Rise	A-RI011	Front Rise from Top Edge - Along Curve	Non-Critical	1/4	1/4	0	1/4	1/4	3/8	3/8	3/8	3/8	1/2	1/2	1/2
Rise	A-RI012	Back Rise from Top Edge - Along Curve	Non-Critical	1/4	1/4	0	3/8	3/8	1/2	3/4	7/8	7/8	3/4	3/4	3/4
Thigh	A-TH022	Thigh Circumference 1" Below Crotch	Non-Critical	1/4	1/4	0	3/4	3/4	1 1/8	1 1/8	1 1/4	2 1/2	2	2	2
Knee	A-KN002	Knee Circumference 13" Below Crotch	Non-Critical	1/4	1/4	0	3/8	3/8	5/8	5/8	7/8	1 1/4	1	1	1
Leg	A-LE010	Leg Opening Circumference	Non-Critical	1/4	1/4	0	3/8	3/8	5/8	5/8	7/8	1 1/4	1	1	1
Leg	A-LE003	Regular Inseam Length	Non-Critical	1/2	1/2	0	0	0	0	0	0	0	0	0	0
Leg	A-LE002	PHOTO: Inseam Length	Non-Critical	1/2	1/2	0	0	0	0	0	0	0	0	0	0
Pocket	A-PO049	On-Seam Pocket Opening Length	Non-Critical	0	0	0	0	0	0	0	0	0	0	0	0
Pocket	A-PO050	On-Seam Pocket Placement Below Waist Seam	Non-Critical	0	0	0	0	0	0	0	0	0	0	0	0
Pocket	A-PO028	Pocket Bag Height- At Tallest Point	Non-Critical	0	0	0	0	0	0	0	0	0	0	0	0
Pocket	A-PO029	Pocket Bag Width- At Widest Point	Non-Critical	0	0	0	0	0	0	0	0	0	0	0	0
		Waist Elastic Tunnel Height		0	0	0	0	0	0	0	0	0	0	0	0

Measurement Set: 001 : 129100 BANJAN COLLAB FRANCESCA JUMPSUIT Sample Size: 6 UOM: Fractional in															
Section	POM #	POM Name	Criticality	Tol (+)	Tol (-)	6	8	10	12	14	16	18	20	22	24
Waist	A-WA106	Waist Tie Width	Non-Critical	0	0	0	0	0	0	0	0	0	0	0	0
Waist	A-WA070	Waist Tie Length - e. Extended /Exposed- Excl. Tassel	Non-Critical	0	0	0	0	0	0	0	0	0	0	0	0
		Tassel Length		0	0	0	0	0	0	0	0	0	0	0	0



**PLM Product #:** 129100  
**Product Description:** BANJAN COLLAB FRANCESCA JUMPSUIT  
**Brand:** Madewell  
**Sub-brand:**  
**Gender / Age:** Womens  
**Department:** W DRESSES  
**Class:** W DRESSES WOVEN  
**Sub Class:** W DRESS WVN JUMPSUIT  
**Season:** Madewell Womens Apparel Summer 2020

**Product Carryover:** No  
**Primary Material:** Voile JUMPSUIT BANJANAN VOILE  
**Material Supplier:** LI & FUNG  
**Supplier Article #:** LFI-NP-005  
**Source:** LI & FUNG GAURAV INTERNATIONAL\_  
**Spec Status:** Final  
**Photo Approved:** No  
**Size Definition:** Missy--Numeric:00-24  
**Base Size:** 6



129100 BANJAN COLLAB FRANCESCA JUMPSUIT:1st Tech TOP 396048

UOM:Fractional in ()

**Request Owner:** Caetlyn Carbuhn

**Sample Size:** 6

**Request Date:** 02/14/2020

**Sample Execution Quality:** Good

**Request Type:** Tech TOP

**Colorway:**

**Evaluation Date:** 02/18/2020

**Evaluation Status:** **Approved w/ Corrections**

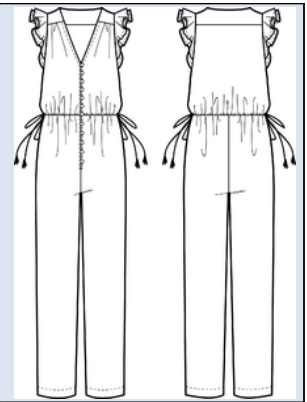
Section	POM #	POM Name	Criticality	Tol (+)	Tol (-)	Requested Meas.	Vendor Meas.	Vendor Delta	Internal Meas.	Internal Delta	Revised Meas.	Comments
Front	A-FR256	Front Body Length from HPS to Waist Seam	Non-Critical	1/4	1/4	16 3/4	0	0	16 1/2	- 1/4	17	RVSD LENGTHEN +1/2" @ CF TO TRUE WAIST
Back	A-BA251	CB Bodice Length - Top Edge to Waist Seam	Non-Critical	1/4	1/4	16	0	0	15 3/4	- 1/4	15 3/4	RVSD +1/2" WAIST SM LOWERS - 1/2" BND
Placket	A-PL003	CF Placket Length - from v-Neck Top Edge	Non-Critical	1/4	1/4	15 3/4	0	0	15 3/4	0	15 3/4	
Shoulder	A-SH018	Shoulder Seam Forward / Front Yoke	Non-Critical	0	0	1 1/2	0	0	1 5/8	1/8	1 5/8	KEEP
Shoulder	A-SH016	Shoulder Slope	Non-Critical	0	0	1 1/8	0	0	1 1/4	1/8	1 1/8	
Shoulder	A-SH002	Across Shoulder	Non-Critical	1/4	1/4	13	0	0	13 1/4	1/4	13	RVSD -1/8" E. WR/WL SIDES BLENDING TO X-FRT
Front	A-FR040	Across Front 5" Below HPS - Not Including Slv Ruffle	Non-Critical	1/4	1/4	12 3/4	0	0	13	1/4	12 1/2	RVSD -1/4" E. WR/WL BLENDING TO 0" @ CHEST
Back	A-BA044	Across Back Along Back Yoke Seam	Non-Critical	1/4	1/4	13 1/4	0	0	13	- 1/4	13	KEEP
Back	A-BA099	Back Yoke Height from CB Neck Top Edge	Non-Critical	0	0	4 1/2	0	0	4 1/2	0	4 1/2	
Sleeve	A-SL190	inner Sleeve Ruffle Width at Shoulder (Each)	Non-Critical	0	0	2	0	0	2	0	2	
Chest	A-CH001	Chest Circumference 1" Below Armhole	Non-Critical	1/2	1/2	38 1/2	0	0	39	1/2	40	RVSD: +1/2" E. WR/WL SIDES BLENDING FRM WAIST
Armhole	A-AR001	Armhole Circumference	Non-Critical	1/4	1/4	20 1/4	0	0	20 1/4	0	20 1/4	
Armhole	A-AR007	Armhole Straight - Seam to Seam	Non-Critical	1/8	1/8	9 1/4	0	0	9	- 1/4	9	KEEP
Neck	A-NE016	Front Neck Drop from HPS (to Top Edge)	Non-Critical	1/8	1/8	9 5/8	0	0	9 5/8	0	9 5/8	

Section	POM #	POM Name	Criticality	Tol (+)	Tol (-)	Requested Meas.	Vendor Meas.	Vendor Delta	Internal Meas.	Internal Delta	Revised Meas.	Comments
Neck	A-NE008	Back Neck Drop from HPS	Non-Critical	1/8	1/8	1/2	0	0	1/4	- 1/4	3/4	RVSD SCOOP LOWERING 1/2"
Neck	A-NE005	Neck Width at HPS - Edge to Edge	Non-Critical	1/8	1/8	7 3/4	0	0	6 1/2	-1 1/4	6 1/2	KEEP
Placket	A-PL004	CF Under Placket Width	Non-Critical	0	0	3/8	0	0	3/8	0	3/4	RVSD INCREASE +3/8"
General - Details	A-GD023	Outer Ruffle Height Along Armhole	Non-Critical	0	0	1/2	0	0	1 3/8	7/8	1 3/8	KEEP
Waist	A-WA021	Waist Circumference Along Waist Seam - Ties Tied / Cynched	Non-Critical	1/2	1/2	31 1/2	0	0	32 3/4	1 1/4	32 3/4	KEEP
Waist	A-WA018	Waist Circumference (Extended)	Critical	1/2	1/2	41	0	0	41	0	42	RVSD: +1/2" E. WR/WL SIDES BLENDING TO CHEST
Hip	A-HI052	Low Hip Placement 'X' Below Waist Seam	Non-Critical	0	0	8	0	0	8	0	8	
Hip	A-HI063	Low Hip Circumference at 'X' Placement	Non-Critical	1/2	1/2	44 1/2	0	0	44 1/2	0	43 1/2	RVSD: RESHAPE HIP CURVE/ REDUCING FULLNESS - 1"
Rise	A-RI011	Front Rise from Top Edge - Along Curve	Non-Critical	1/4	1/4	13 3/8	0	0	13 3/8	0	13 3/8	RVSD: WAIST LOWERS 1/2" +1/2" TO FRT SADDLE
Rise	A-RI012	Back Rise from Top Edge - Along Curve	Non-Critical	1/4	1/4	18	0	0	18	0	17 1/4	RVSD WAIST - 1/2" +1/4" BCK SADDLE - 1/2" O/S
Thigh	A-TH022	Thigh Circumference 1" Below Crotch	Non-Critical	1/4	1/4	27 1/4	0	0	27 1/4	0	28	RVSD: +1/2" BK RISE SADDLE +1/4" FRT HOOK
Knee	A-KN002	Knee Circumference 13" Below Crotch	Non-Critical	1/4	1/4	21 3/4	0	0	21 1/2	- 1/4	21 1/2	KEEP
Leg	A-LE010	Leg Opening Circumference	Non-Critical	1/4	1/4	18 3/4	0	0	18 3/4	0	18	RVSD -3/4" TAPER BLENDING TO 0" @ KNEE

Section	POM #	POM Name	Criticality	Tol (+)	Tol (-)	Requested Meas.	Vendor Meas.	Vendor Delta	Internal Meas.	Internal Delta	Revised Meas.	Comments
Leg	A-LE003	Regular Inseam Length	Non-Critical	1/2	1/2	25 1/4	0	0	25 1/2	1/4	25 1/2	KEEP
Leg	A-LE002	PHOTO: Inseam Length	Non-Critical	1/2	1/2	26 1/4	0	0	0	0	26 1/4	
Pocket	A-PO049	On-Seam Pocket Opening Length	Non-Critical	0	0	5 3/4	0	0	5 3/4	0	5 3/4	
Pocket	A-PO050	On-Seam Pocket Placement Below Waist Seam	Non-Critical	0	0	2 3/4	0	0	2 3/4	0	2 1/4	RVSD: WAIST LOWERS 1/2"
Pocket	A-PO028	Pocket Bag Height- At Tallest Point	Non-Critical	0	0	11	0	0	11	0	11	
Pocket	A-PO029	Pocket Bag Width- At Widest Point	Non-Critical	0	0	6 3/4	0	0	6 7/8	1/8	6 7/8	KEEP
		Waist Elastic Tunnel Height		0	0	3/8	0	0	1/2	1/8	1/2	KEEP
Waist	A-WA106	Waist Tie Width	Non-Critical	0	0	1/4	0	0	1/8	- 1/8	1/8	KEEP
Waist	A-WA070	Waist Tie Length -e. Extended /Exposed- Excl. Tassel	Non-Critical	0	0	10 1/2	0	0	10	- 1/2	10 1/2	BTS
		Tassel Length		0	0	2 1/2	0	0	2 1/2	0	2 1/2	



<b>PLM Product #:</b>	129100	<b>Product Carryover:</b>	No
<b>Product Description:</b>	BANJAN COLLAB FRANCESCA JUMPSUIT	<b>Primary Material:</b>	Voile JUMPSUIT BANJANAN VOILE
<b>Brand:</b>	Madewell	<b>Material Supplier:</b>	LI & FUNG
<b>Sub-brand:</b>		<b>Supplier Article #:</b>	LFI-NP-005
<b>Gender / Age:</b>	Womens	<b>Source:</b>	LI & FUNG GAURAV INTERNATIONAL_
<b>Department:</b>	W DRESSES	<b>Spec Status:</b>	Final
<b>Class:</b>	W DRESSES WOVEN	<b>Photo Approved:</b>	No
<b>Sub Class:</b>	W DRESS WVN JUMPSUIT	<b>Size Definition:</b>	Missy--Numeric:00-24
<b>Season:</b>	Madewell Womens Apparel Summer 2020	<b>Base Size:</b>	6



129100 BANJAN COLLAB FRANCESCA JUMPSUIT:1st Tech TOP 396048

UOM:Fractional in

Request Owner: Caetlyn Carbuhn

Sample Size: 6

Request Date: 02/14/2020

Sample Execution Quality: Good

Request Type: Tech TOP

Colorway:

Evaluation Date: 02/18/2020

Evaluation Status: **Approved w/ Corrections****Evaluation Comments:**

02.18.2020

\*CF WAIST LOWERS 1/2" @ 17" RVSD TO TRUE WAIST

\*AS CF WAIST SM LOWERS 1/2" @ CF ; FRT RISE REDUCES -1/2" BUT INCREASE FRT RISE HOOK +1/2" @ 13 3/8" RVSD

\*On-Seam Pocket Placement Below Waist Seam TRANSPOSES W/WAIST SEAM LOWERING 1/2" @ 2 1/4" RVSD

\*CB BL LENGTHENS +1/2" ABOVE WAIST SM AND -1/2" WITH BND @ 15 3/4" RVSD

\*AS CB WAIST SM LOWERS 1/2"; BCK RISE REDUCES -1/2" BUT SADDLE SHOULD INCREASE +1/4"

\*OUTSEAM IS DIPPING; PICK UP -1/2" BLENDING ALONG BACK RISE/ SEAT OUTSEAM TO OUTSEAM = 17 1/4" RVSD

\*AS BACK SADDLE INCREASES +1/2" AND FRT HOOK EXTENDS +1/4" ; THIGH CIRC WILL INCREASE +3/4" @ 28" RVSD

\*TAPER X-SHLDR -1/8" E. WR/WL SIDES ! 13" RVSD BLENDING TO X-FRT -1/4" E. WR/WL SIDES @ 12 1/2" RVSD

\*KEEP WAIST CIRC. RELAXED AS PER SMPL

\*INCREASE WAIST CIRC. EXT INSERTING +1/2" @ E. CF WR/WL SIDES BLENDING OVER APEX TO 0" @ X-FRT; WAIST CIRC. EXT +1" = 42" RVSD

\*CHEST CIRC. INCREASES W/ WAIST EXT +1" @ 40" RVSD

\*READJUST BUTTON SPACING ACCORDINGLY BY ADDING +1-2X BTNS TO PLACKET TO REDUCE GAP DISTANCE \* SEE UPDTE CONSTRUCTION NOTES

\*CF UNDER PLACKET WIDTH IS TOO NARROW AND IS STICKING OUT IN BETWEEN THE BUTTON SPACING; INCREASE +3/8" TO 3/4" RVSD

\*PLACKET BUTTON LOOPS WILL BE ELASTIC BUNGEE AND SHOULD BE 'CAT EYE' SHAPED. SEE IMAGE\*

\*PLACKET BOTTOM EDGE TOP STITCHING SHOULD EXTEND FROM 1/4" SNTS ALONG WR/WL PLACKET SIDES AND SQUARE OFF @ BOTTOM TO SECURE UNDERPLACKET/ AND SEAM ALLOWANCE

\*LOW HIP CIRC. @ 'X' IS BUBBLING ALONG OUTSEAM CAUSING OUTSEAM TO DIP; PICK UP OUTSEAM @ HIP BY REDUCING/ RESHAPING OUTSEAM FULLNESS -1/2" E. WR/ WL SIDES - -1" @ 43 1/2" RVSD

\*;LEG OPENING IS KICKING OUTWARD; STRAIGHTEN SHAPE BY TAPERING LEG OPENING CIRC -3/4" @ 18" RVSD BLENDING TO 0" @ KNEE TO STRAIGHTEN LEG SHAPE

\*REDUCE -1/4" @ FRT LEG OUTSEAM AND 01

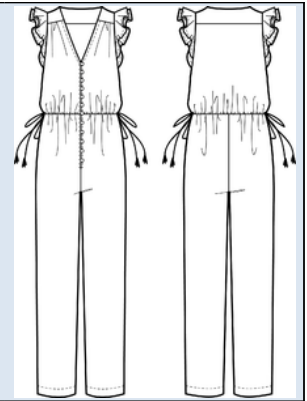
\*KEEP I/S AS PER SMPL @ 25 1/2"

\*ALL ELSE KEEP OR GO BTS AS INDICATED IN EVAL.

*Madewell*

**PLM Product #:** 129100  
**Product Description:** BANJAN COLLAB FRANCESCA JUMPSUIT  
**Brand:** Madewell  
**Sub-brand:**  
**Gender / Age:** Womens  
**Department:** W DRESSES  
**Class:** W DRESSES WOVEN  
**Sub Class:** W DRESS WVN JUMPSUIT  
**Season:** Madewell Womens Apparel Summer 2020

**Product Carryover:** No  
**Primary Material:** Voile JUMPSUIT BANJANAN VOILE  
**Material Supplier:** LI & FUNG  
**Supplier Article #:** LFI-NP-005  
**Source:** LI & FUNG GAURAV INTERNATIONAL\_  
**Spec Status:** Final  
**Photo Approved:** No  
**Size Definition:** Missy--Numeric:00-24  
**Base Size:** 6



EXTEND UNDERPLACKET LENGTH TO BE TOP STITCHED DOWN ONTO CF PLACKET SEAM ALLOWANCE FINISH AS PER DASHED LINES BELOW

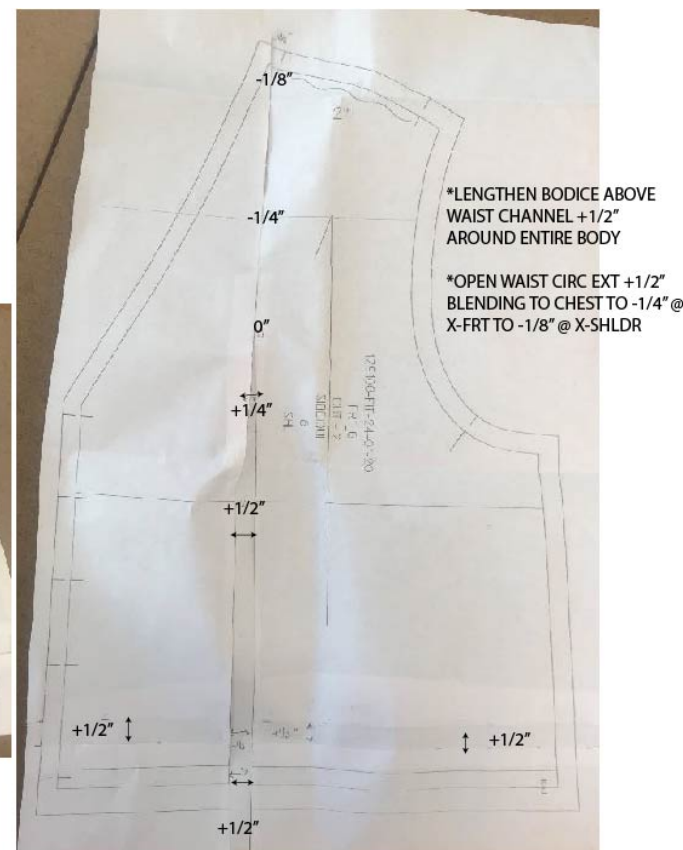
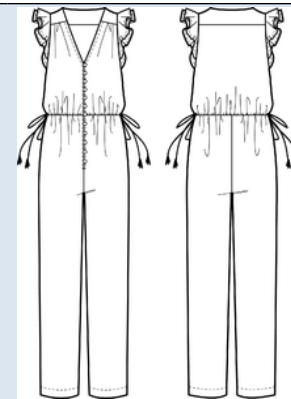


CF PLACKET BUTTON LOOPS WILL BE ELASTIC AND SHOULD BE CAT EYE SHAPE AS PER ABOVE REFERENCE IMAGE



**PLM Product #:** 129100  
**Product Description:** BANJAN COLLAB FRANCESCA JUMPSUIT  
**Brand:** Madewell  
**Sub-brand:**  
**Gender / Age:** Womens  
**Department:** W DRESSES  
**Class:** W DRESSES WOVEN  
**Sub Class:** W DRESS WVN JUMPSUIT  
**Season:** Madewell Womens Apparel Summer 2020

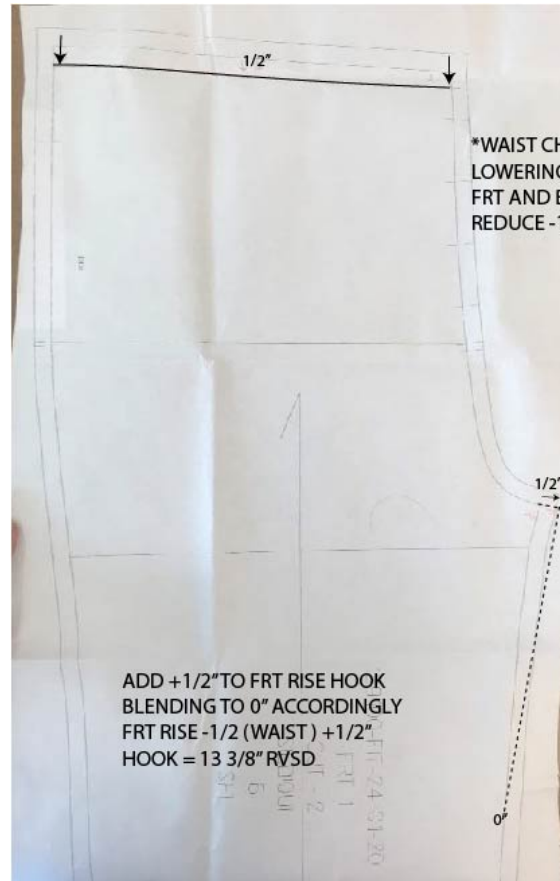
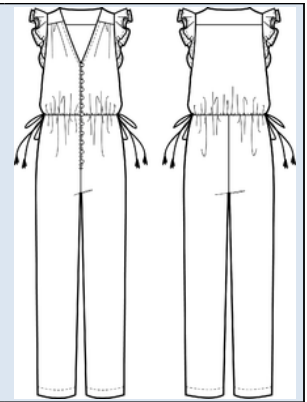
**Product Carryover:** No  
**Primary Material:** Voile JUMPSUIT BANJANAN VOILE  
**Material Supplier:** LI & FUNG  
**Supplier Article #:** LFI-NP-005  
**Source:** LI & FUNG GAURAV INTERNATIONAL\_  
**Spec Status:** Final  
**Photo Approved:** No  
**Size Definition:** Missy--Numeric:00-24  
**Base Size:** 6



*Madewell*

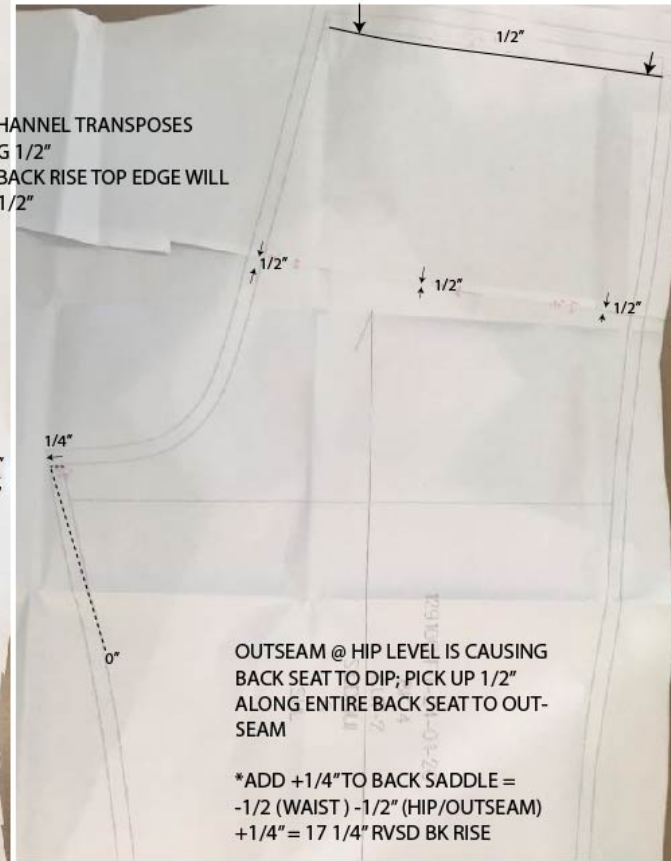
**PLM Product #:** 129100  
**Product Description:** BANJAN COLLAB FRANCESCA JUMPSUIT  
**Brand:** Madewell  
**Sub-brand:**  
**Gender / Age:** Womens  
**Department:** W DRESSES  
**Class:** W DRESSES WOVEN  
**Sub Class:** W DRESS WVN JUMPSUIT  
**Season:** Madewell Womens Apparel Summer 2020

**Product Carryover:** No  
**Primary Material:** Voile JUMPSUIT BANJANAN VOILE  
**Material Supplier:** LI & FUNG  
**Supplier Article #:** LFI-NP-005  
**Source:** LI & FUNG GAURAV INTERNATIONAL\_  
**Spec Status:** Final  
**Photo Approved:** No  
**Size Definition:** Missy--Numeric:00-24  
**Base Size:** 6



\*WAIST CHANNEL TRANSPPOSES  
 LOWERING 1/2"  
 FRT AND BACK RISE TOP EDGE WILL  
 REDUCE -1/2"

ADD +1/2" TO FRT RISE HOOK  
 BLENDING TO 0" ACCORDINGLY  
 FRT RISE -1/2 (WAIST) +1/2"  
 HOOK = 13 3/8" RVSD

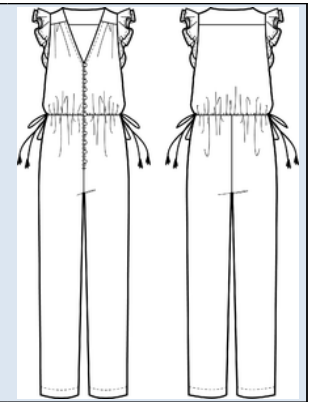


OUTSEAM @ HIP LEVEL IS CAUSING  
 BACK SEAT TO DIP; PICK UP 1/2"  
 ALONG ENTIRE BACK SEAT TO OUT-  
 SEAM

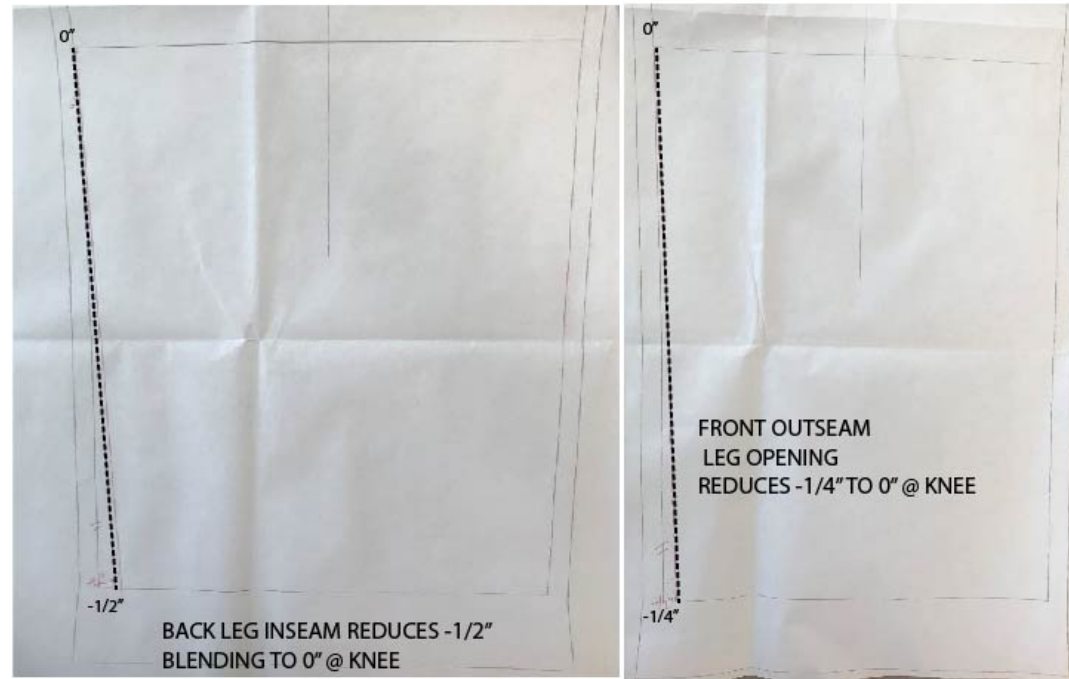
\*ADD +1/4" TO BACK SADDLE =  
 -1/2 (WAIST) -1/2" (HIP/OUTSEAM)  
 +1/4" = 17 1/4" RVSD BK RISE

**PLM Product #:** 129100  
**Product Description:** BANJAN COLLAB FRANCESCA JUMPSUIT  
**Brand:** Madewell  
**Sub-brand:**  
**Gender / Age:** Womens  
**Department:** W DRESSES  
**Class:** W DRESSES WOVEN  
**Sub Class:** W DRESS WVN JUMPSUIT  
**Season:** Madewell Womens Apparel Summer 2020

**Product Carryover:** No  
**Primary Material:** Voile JUMPSUIT BANJANAN VOILE  
**Material Supplier:** LI & FUNG  
**Supplier Article #:** LFI-NP-005  
**Source:** LI & FUNG GAURAV INTERNATIONAL\_  
**Spec Status:** Final  
**Photo Approved:** No  
**Size Definition:** Missy--Numeric:00-24  
**Base Size:** 6

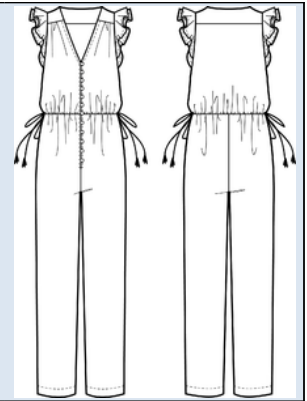


STRAIGHTEN LEG SHAPE BY REDUCING LEG OPENING CIRC.  
 LEG OPENING CIRC. IS KICKING OUTWARD



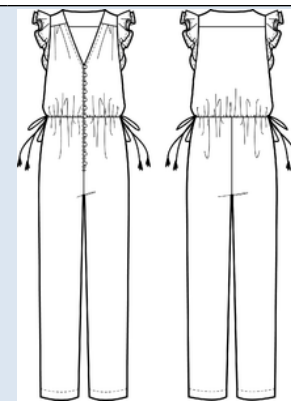


<b>PLM Product #:</b>	129100	<b>Product Carryover:</b>	No
<b>Product Description:</b>	BANJAN COLLAB FRANCESCA JUMPSUIT	<b>Primary Material:</b>	Voile JUMPSUIT BANJANAN VOILE
<b>Brand:</b>	Madewell	<b>Material Supplier:</b>	LI & FUNG
<b>Sub-brand:</b>		<b>Supplier Article #:</b>	LFI-NP-005
<b>Gender / Age:</b>	Womens	<b>Source:</b>	LI & FUNG GAURAV INTERNATIONAL_
<b>Department:</b>	W DRESSES	<b>Spec Status:</b>	Final
<b>Class:</b>	W DRESSES WOVEN	<b>Photo Approved:</b>	No
<b>Sub Class:</b>	W DRESS WVN JUMPSUIT	<b>Size Definition:</b>	Missy--Numeric:00-24
<b>Season:</b>	Madewell Womens Apparel Summer 2020	<b>Base Size:</b>	6





<b>PLM Product #:</b>	129100	<b>Product Carryover:</b>	No
<b>Product Description:</b>	BANJAN COLLAB FRANCESCA JUMPSUIT	<b>Primary Material:</b>	Voile JUMPSUIT BANJANAN VOILE
<b>Brand:</b>	Madewell	<b>Material Supplier:</b>	LI & FUNG
<b>Sub-brand:</b>		<b>Supplier Article #:</b>	LFI-NP-005
<b>Gender / Age:</b>	Womens	<b>Source:</b>	LI & FUNG GAURAV INTERNATIONAL_
<b>Department:</b>	W DRESSES	<b>Spec Status:</b>	Final
<b>Class:</b>	W DRESSES WOVEN	<b>Photo Approved:</b>	No
<b>Sub Class:</b>	W DRESS WVN JUMPSUIT	<b>Size Definition:</b>	Missy--Numeric:00-24
<b>Season:</b>	Madewell Womens Apparel Summer 2020	<b>Base Size:</b>	6



**001 : BASIC TRIM TEMPLATE**

**BOM: Colorway - Material Color**

**Section: Main Materials**

Placement	Material	Supplier	Material ID	Supplier Article Number	Quantity	BOM UOM	PP0109 Ban Parrot Vintage Parchment	Comments
MAIN BODY: PRINT IS RANDOMLY PLACED	Voile JUMPSUIT BANJANAN VOILE	LI & FUNG	38220	LFI-NP-005	3.200	Linear Yard	PP0109 Ban Parrot Vintage Parchment	price based on 3 k yard

**001 : BASIC TRIM TEMPLATE**

**BOM: Colorway - Material Color**

**Section: Aesthetic Trims**

Placement	Material	Supplier	Material ID	Supplier Article Number	Quantity	BOM UOM	PP0109 Ban Parrot Vintage Parchment	Comments
TIE ENDS	FTY SOURCE TASSELS		0		1.000		SOPHICOLOR 01-0035-10	
BUTTON LOOPS	FTY SOURCE BUNGEE LOOPS		0		0.000		DTM	
POCKETING	Non Stretch Lining 100% Cotton ART# LFI/80'S-BCI BANJANAN LINING	LI & FUNG	44466	ART# LFI 80S BCI	0.000	Linear Yard	DTM	
12X CF PLACKET +1 SPARE	Shank Button SELF COVERED DOME SHANK BUTTON 16L	Factory Sourced	15133		13.000			
CONSTRUCTION AND TOPSTITCHING	Sew Thread Thread DUAL DUTY COTTON WRAP/POLY CORE THREAD	COATS	14111		1.000		DTM	
MARKETING SET	Sew Thread Thread DUAL DUTY COTTON WRAP/POLY CORE THREAD	COATS	14111		1.000		DTM	

001 : BASIC TRIM TEMPLATE		BOM: Colorway - Material Color					Section: Technical Trims	
Placement	Material	Supplier	Material ID	Supplier Article Number	Quantity	BOM UOM	PP0109 Ban Parrot Vintage Parchment	Comments
WAIST TUNNEL	Elastic 1/4" Width	Factory Sourced	10065		1.000		WHITE_	

001 : BASIC TRIM TEMPLATE		BOM: Colorway - Material Color					Section: Wash and Dry Processes	
Placement	Material	Supplier	Material ID	Supplier Article Number	Quantity	BOM UOM	PP0109 Ban Parrot Vintage Parchment	Comments
	15 MIN RINSE		0		1.000			

001 : BASIC TRIM TEMPLATE		BOM: Colorway - Material Color					Section: Labels	
Placement	Material	Supplier	Material ID	Supplier Article Number	Quantity	BOM UOM	PP0109 Ban Parrot Vintage Parchment	Comments
REFER TO LABEL PLACEMENT PAGE	Woven Label MADEWELL X BANJANAN END FOLD 18X94MM (FOLDED)	Sourcing Solutions International Ltd (Hong Kong)	46411		1.000	Piece		
REFER TO LABEL PLACEMENT PAGE	Woven Label MADEWELL SIZE/COO LABEL_MWFA-0426 (IVORY), MWFA-0459 (BLACK) 34(H) x 10(W) mm-flat	Sourcing Solutions International Ltd (Hong Kong)	14113		1.000	Piece	COL# WHITE	
HANG TAG	Paper Hang Tag MADEWELL X BANJANAN HANGTAG WITH WHITE STRING 77 x 45 MM	Sourcing Solutions International Ltd (Hong Kong)	46418		1.000	Piece		
REFER TO LABEL PLACEMENT PAGE	Printed Label INTERNATIONAL CARE/CONTENT LABEL_#101 158x30mm	SML China	11043		1.000	Piece	WHITE GROUND/BLACK PRINT	
REFER TO LABEL PLACEMENT PAGE	Printed Label TRACKING LABEL_JCPL510 12X36mm	Avery Dennison Hong Kong B.V.	11046		1.000	Piece	WHITE GROUND/BLACK PRINT	

001 : BASIC TRIM TEMPLATE		BOM: Colorway - Material Color					Section: Packaging	
Placement	Material	Supplier	Material ID	Supplier Article Number	Quantity	BOM UOM	PP0109 Ban Parrot Vintage Parchment	Comments
			0		0.000			
PACKING			0		1.000			