



PLM Product #:	135506	Product Carryover:	No
Product Description:	LUCY TOP	Primary Material:	Voile BCI TEXTURED YD COTTON CRINKLE
Brand:	Madewell	Material Supplier:	TEAMKIT
Sub-brand:		Supplier Article #:	TK3749
Gender / Age:	Womens	Source:	Fashion Accessories_
Department:	W SHIRTS	Spec Status:	Initial Development
Class:	W SHIRTS TOPS	Photo Approved:	Yes
Sub Class:	W SHIRTS TOPS SS	Size Definition:	MADEWELL Missy--Alpha:XXS-3X
Season:	Madewell Womens Apparel Summer 2020	Base Size:	M

**Designer:** Emily Banas**Tech Designer:** Olga David**Sourcing Manager:** Paige Scofield**Secondary Designer:** Yeo-Jin Lim**Reference Style 1:****Reference Style 2:****Extended Size Parent:****Comments:**

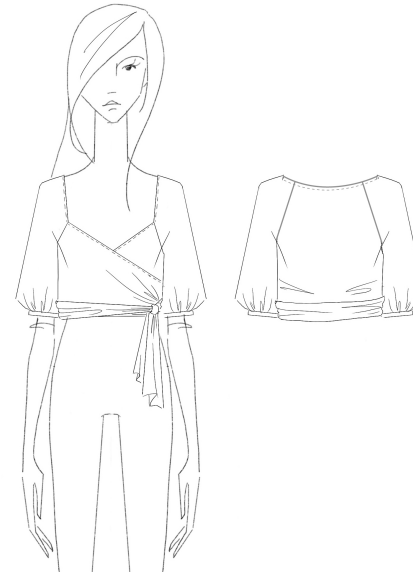
TO: FASHION ACCESSORIES
FROM: CAETLYN

02.21.2020: SUBMIT 3RD FIT SMPL WITHIN 14 DAYS!
*SENDING PINNED REJECTED 2ND FIT SMPL FOR YOUR REF-MUST BE
RETURNED W/ 3RD FI TSMPL!

*SEE EMAIL FROM PRODUCTION AS PER BA DATE

01.22.2020: SUBMIT 2ND FIT SAMPLE WITHIN 14 DAYS!
SHAREBODY #135375 FROM A DIFFERENT VENDOR---SENDING PINNED FIT
SMPL FOR YOUR REFERENCE. MUST RETURN W/ 2ND FIT !
*ALL COMMENTS/CORRECTIONS REFLECT FIT APPROVED SHAREBODY
#135375

12.05.19: SUBMIT 1ST FIT WITHIN 14 DAYS! *FIT A2 SHAREBODY #135375
FROM A DIFFERENT VENDOR---SENDING PINNED A2 FOR YOUR
REFERENCE. MUST RETURN W/ 1ST FIT !
PHOTO APPROVED!





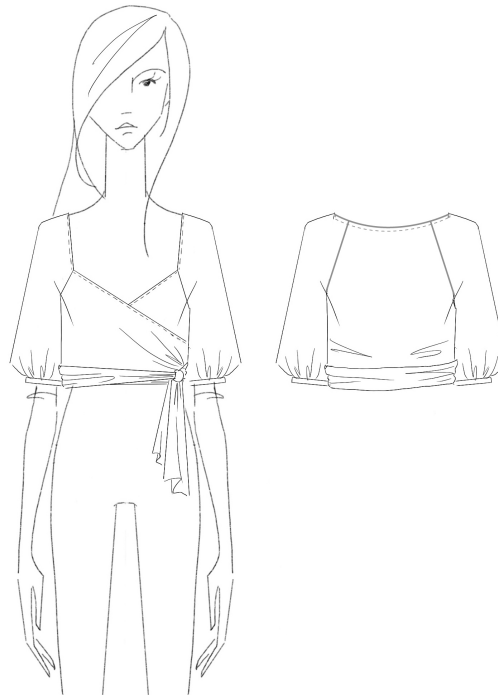
PLM Product #:	135506	Product Carryover:	No
Product Description:	LUCY TOP	Primary Material:	Voile BCI TEXTURED YD COTTON CRINKLE
Brand:	Madewell	Material Supplier:	TEAMKIT
Sub-brand:		Supplier Article #:	TK3749
Gender / Age:	Womens	Source:	Fashion Accessories_
Department:	W SHIRTS	Spec Status:	Initial Development
Class:	W SHIRTS TOPS	Photo Approved:	Yes
Sub Class:	W SHIRTS TOPS SS	Size Definition:	MADEWELL Missy--Alpha:XXS-3X
Season:	Madewell Womens Apparel Summer 2020	Base Size:	M



Color	Colorway #	Colorway Carry Over	PLM Colorway Status	Colorway Merchant Status	Initial Delivery	SAP Style # (All Brands)
PP0005 Small Aloha Dark Baltic	1083208	No	Development	Planned Buy	07/01/2020	AO034



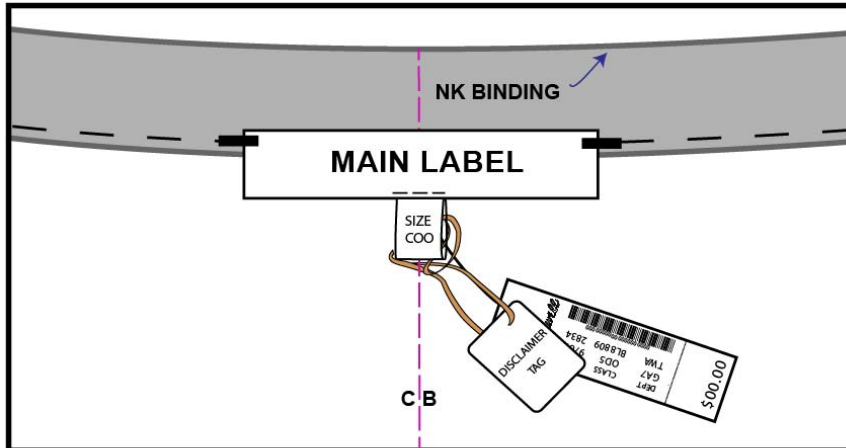
PLM Product #:	135506	Product Carryover:	No
Product Description:	LUCY TOP	Primary Material:	Voile BCI TEXTURED YD COTTON CRINKLE
Brand:	Madewell	Material Supplier:	TEAMKIT
Sub-brand:		Supplier Article #:	TK3749
Gender / Age:	Womens	Source:	Fashion Accessories_
Department:	W SHIRTS	Spec Status:	Initial Development
Class:	W SHIRTS TOPS	Photo Approved:	Yes
Sub Class:	W SHIRTS TOPS SS	Size Definition:	MADEWELL Missy--Alpha:XXS-3X
Season:	Madewell Womens Apparel Summer 2020	Base Size:	M





PLM Product #: 135506
Product Description: LUCY TOP
Brand: Madewell
Sub-brand:
Gender / Age: Womens
Department: W SHIRTS
Class: W SHIRTS TOPS
Sub Class: W SHIRTS TOPS SS
Season: Madewell Womens Apparel Summer 2020

Product Carryover: No
Primary Material: Voile BCI TEXTURED YD COTTON CRINKLE
Material Supplier: TEAMKIT
Supplier Article #: TK3749
Source: Fashion Accessories_
Spec Status: Initial Development
Photo Approved: Yes
Size Definition: MADEWELL Missy--Alpha:XXS-3X
Base Size: M



MAIN LABELS: (FOR NECK BINDING)

- SET MAIN LABEL TOP EDGE @ CB NK BAND / FACING BOTTOM EDGE
- THREAD COLOR = SEE BOM
- 1/8" HORIZONTAL HAND TACK ON TOP CORNERS ONLY
- HAND TACK THRU 1 LAYER ONLY
- HAND TACK MUST BE SECURED WITH A HIDDEN KNOT TO PREVENT FALLING OUT

SIZE / COO LABEL:

- SEW CENTERED UNDER MAIN LABEL W/ EDGESTITCH DTM MAIN LABEL GROUND COLOR

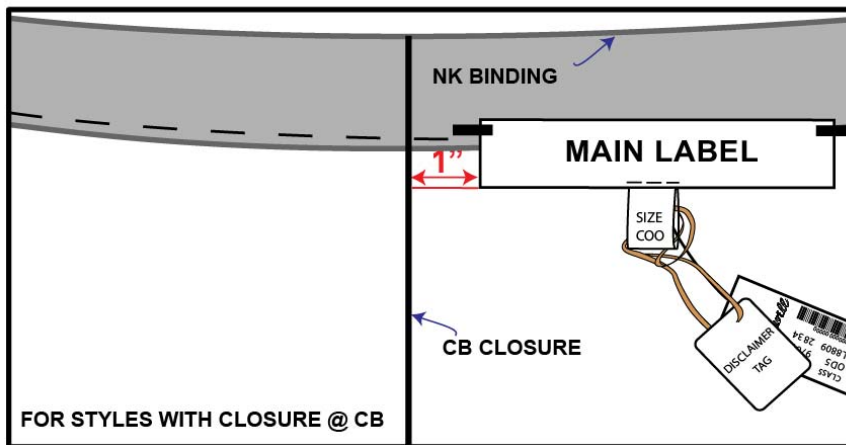
PRICE TAG:

- GUN THRU SIZE / COO LABEL
- *** (DO NOT GUN THRU TEXT!)

DISCLAIMER TAG: (IF NEEDED)

- LOOP THROUGH SIZE LABEL

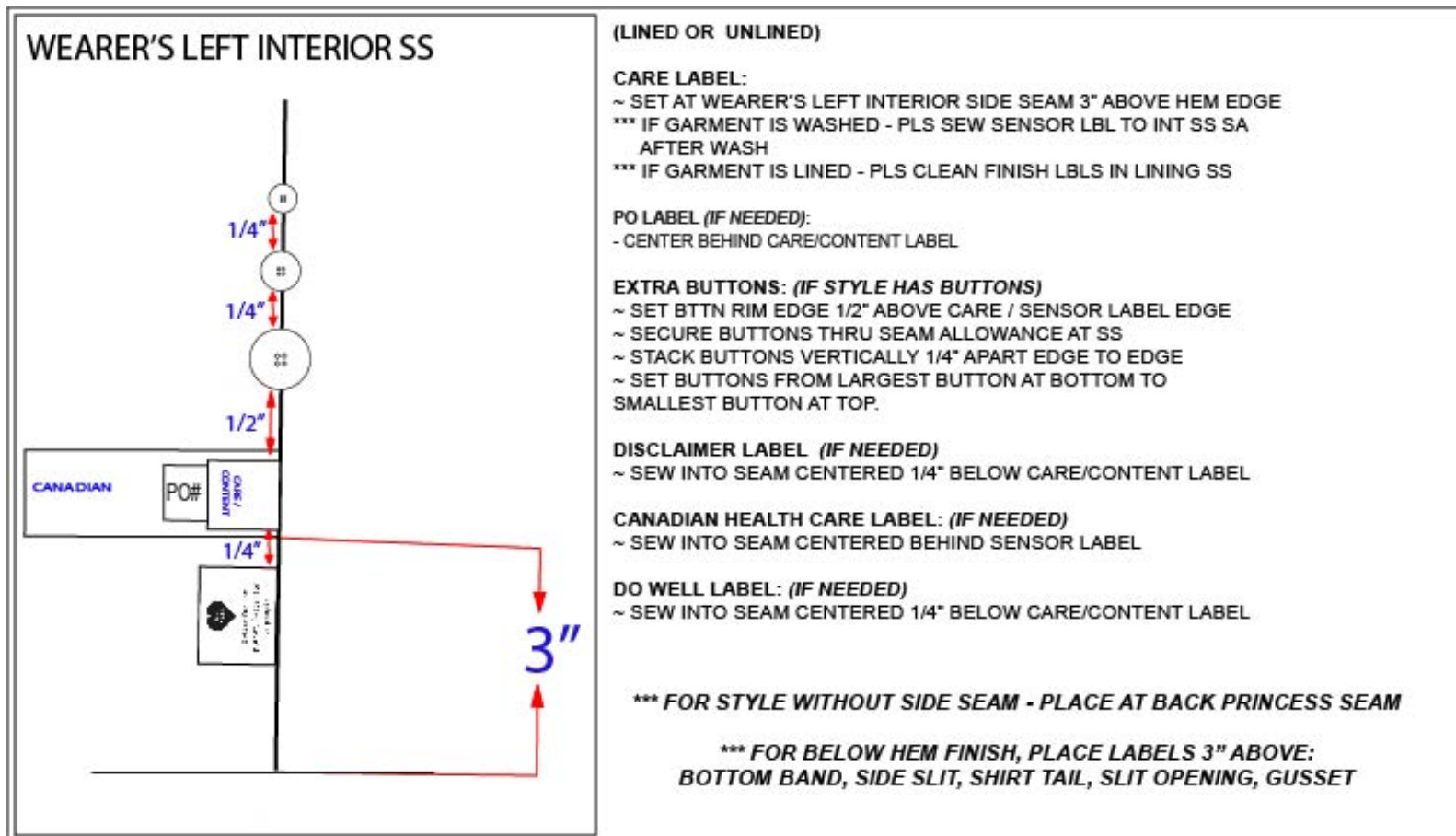
***** FOR STYLES WITH CB CLOSURE *****
- SET MAIN LABEL 1" FROM CB CLOSURE EDGE



FOR STYLES WITH CLOSURE @ CB

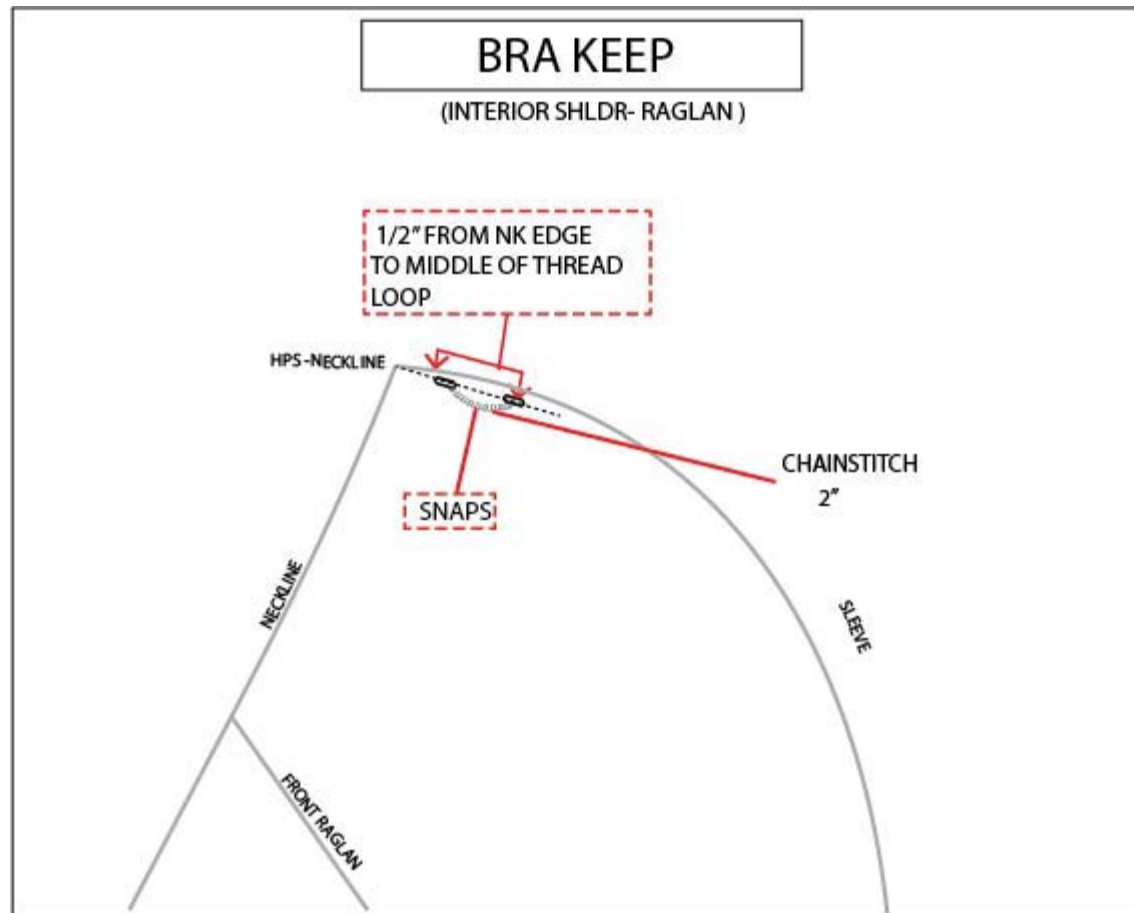


PLM Product #:	135506	Product Carryover:	No
Product Description:	LUCY TOP	Primary Material:	Voile BCI TEXTURED YD COTTON CRINKLE
Brand:	Madewell	Material Supplier:	TEAMKIT
Sub-brand:		Supplier Article #:	TK3749
Gender / Age:	Womens	Source:	Fashion Accessories_
Department:	W SHIRTS	Spec Status:	Initial Development
Class:	W SHIRTS TOPS	Photo Approved:	Yes
Sub Class:	W SHIRTS TOPS SS	Size Definition:	MADEWELL Missy--Alpha:XXS-3X
Season:	Madewell Womens Apparel Summer 2020	Base Size:	M



Madewell

PLM Product #:	135506	Product Carryover:	No
Product Description:	LUCY TOP	Primary Material:	Voile BCI TEXTURED YD COTTON CRINKLE
Brand:	Madewell	Material Supplier:	TEAMKIT
Sub-brand:		Supplier Article #:	TK3749
Gender / Age:	Womens	Source:	Fashion Accessories_
Department:	W SHIRTS	Spec Status:	Initial Development
Class:	W SHIRTS TOPS	Photo Approved:	Yes
Sub Class:	W SHIRTS TOPS SS	Size Definition:	MADEWELL Missy--Alpha:XXS-3X
Season:	Madewell Womens Apparel Summer 2020	Base Size:	M





PLM Product #:	135506	Product Carryover:	No
Product Description:	LUCY TOP	Primary Material:	Voile BCI TEXTURED YD COTTON CRINKLE
Brand:	Madewell	Material Supplier:	TEAMKIT
Sub-brand:		Supplier Article #:	TK3749
Gender / Age:	Womens	Source:	Fashion Accessories_
Department:	W SHIRTS	Spec Status:	Initial Development
Class:	W SHIRTS TOPS	Photo Approved:	Yes
Sub Class:	W SHIRTS TOPS SS	Size Definition:	MADEWELL Missy--Alpha:XXS-3X
Season:	Madewell Womens Apparel Summer 2020	Base Size:	M



Construction Detail - 001 : 135506 LUCY TOP

Constr. #	Part	Construction Detail	Comments
	NECKLINE		FINISH W/ 1/4" WIDE BIAS TAPE, BACKSTITCH & 1/4" SNTS. *EXTENDING TO WAIST WRAP VERTICAL SEAM JOIN
	SHOULDER BRA KEEPS		INSERT 1 1/2" LENGTH SHOULDER DART 1/4" DEPTH PRESSING SA TOWARDS BACK. *SEE BRA KEEPS CONSTRUCTION PAGE*
	RAGLAN SEAMS		SAFETY STITCH & PRESSING SA TOWARDS SLEEVE
	SIDeseAM		SAFETY STITCH, PRESS SA BACK S.
	SLEEVE CUFF BAND		3/8" SELF BIAS BINDING CLEAN FINISHED AND BACKSTITCH TO SLEEVE OPENING AND FINISHED W/ EDGE STITCH
	WAIST TIES		WEARER'S LEFT SIDE: CLEAN FINISH INTO SIDeseAM. WEARER'S RIGHT SIDE: CLEAN FINISH TO FRONT WRAP W/ SAFETY STITCH & PRESS SA TOWARDS SIDeseAM. FINISH BOTH TIES W/ BEND BACK W/ 1/4" SNTS.
	WAIST INTERIOR UNDERWRAP TIE EXIT	INTERIOR WR SIDeseAM	2" LONG EXIT INSERTED @ WR SIDE SEAM; 1/8" BENDBACK WITH EDGESTITCH AROUND ENTIRE EXIT.
	BODY HEM		BEND BACK W/ 1/4" SNTS
	SHIPPED		TRUE WRAP TIED INTO A BOW @ WEARER'S LEFT *SEE IMAGE



PLM Product #: 135506
Product Description: LUCY TOP
Brand: Madewell
Sub-brand:
Gender / Age: Womens
Department: W SHIRTS
Class: W SHIRTS TOPS
Sub Class: W SHIRTS TOPS SS
Season: Madewell Womens Apparel Summer 2020

Product Carryover: No
Primary Material: Voile BCI TEXTURED YD COTTON CRINKLE
Material Supplier: TEAMKIT
Supplier Article #: TK3749
Source: Fashion Accessories_
Spec Status: Initial Development
Photo Approved: Yes
Size Definition: MADEWELL Missy--Alpha:XXS-3X
Base Size: M



Measurement Set: 002 : 135506 LUCY TOP Sample Size: M UOM: Fractional in

Section	POM #	POM Name	Criticality	Tol (+)	Tol (-)	XXS	XS	S	M	L	XL	XXL	2X	3X
		HPS= NECK INNER EDGE												
		ON BL = 22" FND= 9 3/4"												
Front	A-FR008	Front Body Length from HPS	Non-Critical	1/4	1/4	20 1/4	20 1/2	21	21 1/2	22	22 1/2	23	23 1/2	24
Back	A-BA253	CB Body Length from Neck Top Edge	Non-Critical	1/4	1/4	19 1/4	19 1/2	20	20 1/2	21	21 1/2	21 3/4	22	22 1/4
Back	A-BA254	PHOTO: CB Body Length from Neck Top Edge	Non-Critical	1/4	1/4	22 1/4	22 1/4	22 1/4	22 1/4	22 1/4	22 1/4	22 1/4	22 1/4	22 1/4
Shoulder	A-SH017	Shoulder Slope 4" frm HPS	Non-Critical	0	0	1 1/4	1 1/4	1 1/4	1 1/4	1 1/4	1 3/8	1 1/2	1 1/2	1 1/2
Front	A-FR040	Across Front 7" Below HPS	Non-Critical	1/4	1/4	10 1/4	10 1/2	11	11 1/2	12 1/8	12 3/4	13 1/8	13 1/2	14
Back	A-BA030	Across Back 3 1/2" from CB Neck Top Edge	Non-Critical	1/4	1/4	11	11 1/4	11 3/4	12 1/4	12 7/8	13 1/2	13 7/8	14 1/4	14 3/4
Chest	A-CH004	Chest Circumference 1" Below Armhole (Relaxed)	Non-Critical	1/2	1/2	35	36	38	40	42 1/2	45 1/2	48 1/2	51	54 1/2
Sweep	A-SW009	Sweep Circumference Measured Closed - Straight	Non-Critical	1/2	1/2	34	35	37	39	41 1/2	44 1/2	47 1/2	50	53 1/2
Armhole	A-AR009	Armhole Depth frm HPS to AH Base	Non-Critical	1/4	1/4	8 5/16	8 1/2	8 7/8	9 1/4	9 3/4	10 1/4	10 1/2	10 3/4	11
		Front Raglan Seam Length		1/4	1/4	5 1/8	5 3/8	5 7/8	6 3/8	7	7 5/8	8 1/8	8 5/8	9 1/8
		Back Raglan Seam Length		1/4	1/4	11	11 1/4	11 3/4	12 1/4	12 7/8	13 1/2	14	14 1/2	15

Measurement Set: 002 : 135506 LUCY TOP Sample Size: M UOM: Fractional in															
Section	POM #	POM Name	Criticality	Tol (+)	Tol (-)	XXS	XS	S	M	L	XL	XXL	2X	3X	
Sleeve	A-SL056	Sleeve Cap Width 4" Below Cap	Non-Critical	1/8	1/8	10 5/8	10 3/4	11	11 1/4	11 5/8	12	12 5/8	13 1/4	13 3/4	
Muscle	A-MU001	Muscle Circumference - 1" Below Armhole	Non-Critical	1/4	1/4	16 5/8	17	17 3/4	18 1/2	19 1/2	20 1/2	21 1/4	22	22 3/4	
Sleeve	A-SL088	Sleeve Opening Circumference at Edge (Short Sleeve)	Non-Critical	1/4	1/4	10 5/8	11	11 3/4	12 1/2	13 1/2	14 1/2	15 1/4	16	16 3/4	
Sleeve	A-SL097	Sleeve Band Height	Non-Critical	1/8	1/8	3/8	3/8	3/8	3/8	3/8	3/8	3/8	3/8	3/8	
Sleeve	A-SL096	Sleeve Length from Cap to Hem (Short Sleeve)	Non-Critical	0	0	11 3/4	12	12 1/4	12 1/2	12 3/4	13	13 1/4	13 1/2	13 3/4	
Sleeve	A-SL164	PHOTO Sleeve Length from Cap to Hem (Short Sleeve)	Critical	0	0	13 3/4	14	14 1/4	14 1/2	14 3/4	15	15 1/4	15 1/2	15 3/4	
Neck	A-NE023	Front Neck Drop - HPS to Overlap	Non-Critical	1/8	1/8	8 7/8	8 7/8	9	9 1/8	9 1/4	9 3/8	9 3/8	9 3/8	9 1/2	
Neck	A-NE010	Back Neck Drop - HPS to Top Edge	Non-Critical	1/8	1/8	1	1	1	1	1	1 1/8	1 1/8	1 1/8	1 1/4	
Neck	A-NE004	Neck Width at HPS - Edge to Edge	Non-Critical	1/8	1/8	8 1/2	8 1/2	8 3/4	9	9 1/4	9 1/2	9 1/2	9 1/2	9 5/8	
				0	0	0	0	0	0	0	0	0	0	0	
Waist	A-WA073	Self Sash Height-Along seam	Non-Critical	0	0	2	2	2	2	2	2	2	2	2	
Waist	A-WA070	Waist Tie End Length	Non-Critical	1/4	1/4	5 5/8	5 5/8	5 5/8	5 5/8	5 5/8	5 5/8	5 5/8	5 5/8	5 5/8	
Waist	A-WA071	Waist Tie Length at Wearer's Left at Bottom Hem	Non-Critical	1/8	1/8	32 1/4	32 1/4	32 1/4	32 1/4	32 1/4	32 1/4	32 1/4	32 1/4	32 1/4	
		Waist Tie Length at Wearer's Left at Top Edge		0	0	30 1/4	30 1/4	30 1/4	30 1/4	30 1/4	30 1/4	30 1/4	30 1/4	30 1/4	
Waist	A-WA072	Waist Tie Length at Wearer's Right at Bottom Hem	Non-Critical	1/8	1/8	23 1/2	23 1/2	23 1/2	23 1/2	23 1/2	23 1/2	23 1/2	23 1/2	23 1/2	
		Waist Tie Length at Wearer's Right at Top Edge		0	0	21 1/2	21 1/2	21 1/2	21 1/2	21 1/2	21 1/2	21 1/2	21 1/2	21 1/2	
		Bra Keep Placement from Neck Edge		0	0	3/8	3/8	3/8	3/8	3/8	3/8	3/8	3/8	3/8	
		Bra Keep Length-Snap Cntr - Cntr		0	0	2	2	2	2	2	2	2	2	2	

<i>Measurement Set: 002 : 135506 LUCY TOP Sample Size: M UOM: Fractional in</i>														
Section	POM #	POM Name	Criticality	Tol (+)	Tol (-)	XXS	XS	S	M	L	XL	XXL	2X	3X
		WR SS Tie Wrap Escape Point Height		0	0	1 1/4	1 1/4	1 1/4	1 1/4	1 1/4	1 1/4	1 1/4	1 1/4	1 1/4
		WR SS Tie Wrap Escape Point Plcmnt @'X' frm Hem		0	0	4 1/4	4 1/4	4 1/4	4 1/4	4 1/4	4 1/4	4 1/4	4 1/4	4 1/4



PLM Product #:	135506	Product Carryover:	No
Product Description:	LUCY TOP	Primary Material:	Voile BCI TEXTURED YD COTTON CRINKLE
Brand:	Madewell	Material Supplier:	TEAMKIT
Sub-brand:		Supplier Article #:	TK3749
Gender / Age:	Womens	Source:	Fashion Accessories_
Department:	W SHIRTS	Spec Status:	Initial Development
Class:	W SHIRTS TOPS	Photo Approved:	Yes
Sub Class:	W SHIRTS TOPS SS	Size Definition:	MADEWELL Missy--Alpha:XXS-3X
Season:	Madewell Womens Apparel Summer 2020	Base Size:	M


Measurement Set: 002 : 135506 LUCY TOP Sample Size: M UOM: Fractional in

Section	POM #	POM Name	Criticality	Tol (+)	Tol (-)	XXS	XS	S	M	L	XL	XXL	2X	3X
		HPS= NECK INNER EDGE												
		ON BL = 22" FND= 9 3/4"												
Front	A- FR008	Front Body Length from HPS	Non- Critical	1/4	1/4	- 1/4	- 1/2	- 1/2	0	1/2	1/2	1/2	1/2	1/2
Back	A- BA253	CB Body Length from Neck Top Edge	Non- Critical	1/4	1/4	- 1/4	- 1/2	- 1/2	0	1/2	1/2	1/4	1/4	1/4
Back	A- BA254	PHOTO: CB Body Length from Neck Top Edge	Non- Critical	1/4	1/4	0	0	0	0	0	0	0	0	0
Shoul der	A- SH017	Shoulder Slope 4" frm HPS	Non- Critical	0	0	0	0	0	0	0	1/8	1/8	0	0
Front	A- FR040	Across Front 7" Below HPS	Non- Critical	1/4	1/4	- 1/4	- 1/2	- 1/2	0	5/8	5/8	3/8	3/8	1/2
Back	A- BA030	Across Back 3 1/2" from CB Neck Top Edge	Non- Critical	1/4	1/4	- 1/4	- 1/2	- 1/2	0	5/8	5/8	3/8	3/8	1/2
Chest	A- CH004	Chest Circumference 1" Below Armhole (Relaxed)	Non- Critical	1/2	1/2	-1	-2	-2	0	2 1/2	3	3	2 1/2	3 1/2
Swee p	A- SW009	Sweep Circumference Measured Closed - Straight	Non- Critical	1/2	1/2	-1	-2	-2	0	2 1/2	3	3	2 1/2	3 1/2
Armh ole	A- AR009	Armhole Depth frm HPS to AH Base	Non- Critical	1/4	1/4	- 3/16	- 3/8	- 3/8	0	1/2	1/2	1/4	1/4	1/4
		Front Raglan Seam Length		1/4	1/4	- 1/4	- 1/2	- 1/2	0	5/8	5/8	1/2	1/2	1/2
		Back Raglan Seam Length		1/4	1/4	- 1/4	- 1/2	- 1/2	0	5/8	5/8	1/2	1/2	1/2

Measurement Set: 002 : 135506 LUCY TOP Sample Size: M UOM: Fractional in															
Section	POM #	POM Name	Criticality	Tol (+)	Tol (-)	XXS	XS	S	M	L	XL	XXL	2X	3X	
Sleeve	A-SL056	Sleeve Cap Width 4" Below Cap	Non-Critical	1/8	1/8	- 1/8	- 1/4	- 1/4	0	3/8	3/8	5/8	5/8	1/2	
Muscle	A-MU001	Muscle Circumference - 1" Below Armhole	Non-Critical	1/4	1/4	- 3/8	- 3/4	- 3/4	0	1	1	3/4	3/4	3/4	
Sleeve	A-SL088	Sleeve Opening Circumference at Edge (Short Sleeve)	Non-Critical	1/4	1/4	- 3/8	- 3/4	- 3/4	0	1	1	3/4	3/4	3/4	
Sleeve	A-SL097	Sleeve Band Height	Non-Critical	1/8	1/8	0	0	0	0	0	0	0	0	0	
Sleeve	A-SL096	Sleeve Length from Cap to Hem (Short Sleeve)	Non-Critical	0	0	- 1/4	- 1/4	- 1/4	0	1/4	1/4	1/4	1/4	1/4	
Sleeve	A-SL164	PHOTO Sleeve Length from Cap to Hem (Short Sleeve)	Critical	0	0	- 1/4	- 1/4	- 1/4	0	1/4	1/4	1/4	1/4	1/4	
Neck	A-NE023	Front Neck Drop - HPS to Overlap	Non-Critical	1/8	1/8	0	- 1/8	- 1/8	0	1/8	1/8	0	0	1/8	
Neck	A-NE010	Back Neck Drop - HPS to Top Edge	Non-Critical	1/8	1/8	0	0	0	0	0	1/8	0	0	1/8	
Neck	A-NE004	Neck Width at HPS - Edge to Edge	Non-Critical	1/8	1/8	0	- 1/4	- 1/4	0	1/4	1/4	0	0	1/8	
				0	0	0	0	0	0	0	0	0	0	0	
Waist	A-WA073	Self Sash Height-Along seam	Non-Critical	0	0	0	0	0	0	0	0	0	0	0	
Waist	A-WA070	Waist Tie End Length	Non-Critical	1/4	1/4	0	0	0	0	0	0	0	0	0	
Waist	A-WA071	Waist Tie Length at Wearer's Left at Bottom Hem	Non-Critical	1/8	1/8	0	0	0	0	0	0	0	0	0	
		Waist Tie Length at Wearer's Left at Top Edge		0	0	0	0	0	0	0	0	0	0	0	
Waist	A-WA072	Waist Tie Length at Wearer's Right at Bottom Hem	Non-Critical	1/8	1/8	0	0	0	0	0	0	0	0	0	
		Waist Tie Length at Wearer's Right at Top Edge		0	0	0	0	0	0	0	0	0	0	0	
		Bra Keep Placement from Neck Edge		0	0	0	0	0	0	0	0	0	0	0	
		Bra Keep Length-Snap Cntr - Cntr		0	0	0	0	0	0	0	0	0	0	0	

Measurement Set: 002 : 135506 LUCY TOP Sample Size: M UOM: Fractional in														
Section	POM #	POM Name	Criticality	Tol (+)	Tol (-)	XXS	XS	S	M	L	XL	XXL	2X	3X
		WR SS Tie Wrap Escape Point Height		0	0	0	0	0	0	0	0	0	0	0
		WR SS Tie Wrap Escape Point Plcmnt @'X' frm Hem		0	0	0	0	0	0	0	0	0	0	0



PLM Product #: 135506
Product Description: LUCY TOP
Brand: Madewell
Sub-brand:
Gender / Age: Womens
Department: W SHIRTS
Class: W SHIRTS TOPS
Sub Class: W SHIRTS TOPS SS
Season: Madewell Womens Apparel Summer 2020

Product Carryover: No
Primary Material: Voile BCI TEXTURED YD COTTON CRINKLE
Material Supplier: TEAMKIT
Supplier Article #: TK3749
Source: Fashion Accessories_
Spec Status: Initial Development
Photo Approved: Yes
Size Definition: MADEWELL Missy--Alpha:XXS-3X
Base Size: M



135506 LUCY TOP:3rd Fit 396477

UOM:Fractional in ()

Request Owner: Caetlyn Carbuhn

Sample Size: M

Request Date: 02/20/2020

Sample Execution Quality:

Request Type: Fit

Colorway:

Evaluation Date:

Evaluation Status:

Resubmit

Section	POM #	POM Name	Criticality	Tol (+)	Tol (-)	Requested Meas.	Vendor Meas.	Vendor Delta	Internal Meas.	Internal Delta	Revised Meas.	Comments
Front	A-FR008	Front Body Length from HPS	Non-Critical	1/4	1/4	22 1/2	0	0	21 1/2	-1	21 1/2	KEEP
Back	A-BA253	CB Body Length from Neck Top Edge	Non-Critical	1/4	1/4	20 3/4	0	0	20 1/2	- 1/4	20 1/2	KEEP
Back	A-BA254	PHOTO: CB Body Length from Neck Top Edge	Non-Critical	1/4	1/4	22 1/4	0	0	0	0	22 1/4	
Shoulder	A-SH017	Shoulder Slope 4" frm HPS	Non-Critical	0	0	1 1/2	0	0	1 1/4	- 1/4	1 1/4	KEEP
Front	A-FR040	Across Front 7" Below HPS	Non-Critical	1/4	1/4	12	0	0	12	0	11 1/2	RVSD -1/4" E. SIDE AS RAGLAN SM'S LOWER
Back	A-BA030	Across Back 3 1/2" from CB Neck Top Edge	Non-Critical	1/4	1/4	12 1/4	0	0	12 1/4	0	12 1/4	
Chest	A-CH004	Chest Circumference 1" Below Armhole (Relaxed)	Non-Critical	1/2	1/2	41	0	0	41	0	40	RVSD -1/2" E. CF-WR/WL SIDES TO 0" @ SWEEP
Sweep	A-SW009	Sweep Circumference Measured Closed - Straight	Non-Critical	1/2	1/2	38 1/2	0	0	39 1/2	1	39	RVSD -1/4" E. SS --1/2"
Armhole	A-AR009	Armhole Depth frm HPS to AH Base	Non-Critical	1/4	1/4	9 1/4	0	0	9 1/4	0	9 1/4	KEEP
		Front Raglan Seam Length		1/4	1/4	7 1/8	0	0	7 1/4	1/8	6 3/8	RVSD SM @ NCK LOWERS 3/8" ; RAGLAN SM -1/2"
		Back Raglan Seam Length		1/4	1/4	12	0	0	11 3/4	- 1/4	12 1/4	RVSD: +1/2" RESHAPE SADDLE
Sleeve	A-SL056	Sleeve Cap Width 4" Below Cap	Non-Critical	1/8	1/8	11 1/2	0	0	11 1/4	- 1/4	11 1/4	KEEP
Muscle	A-MU001	Muscle Circumference - 1" Below Armhole	Non-Critical	1/4	1/4	18	0	0	18 1/2	1/2	18 1/2	KEEP

Section	POM #	POM Name	Criticality	Tol (+)	Tol (-)	Requested Meas.	Vendor Meas.	Vendor Delta	Internal Meas.	Internal Delta	Revised Meas.	Comments
Sleeve	A-SL088	Sleeve Opening Circumference at Edge (Short Sleeve)	Non-Critical	1/4	1/4	13	0	0	13	0	12 1/2	RVSD: REDUCE - 1/2" @ OPENING ONLY
Sleeve	A-SL097	Sleeve Band Height	Non-Critical	1/8	1/8	3/8	0	0	3/8	0	3/8	
Sleeve	A-SL096	Sleeve Length from Cap to Hem (Short Sleeve)	Non-Critical	0	0	13	0	0	13 1/2	1/2	12 1/2	RVSD: SHORTEN - 1" AND BAL I/S
Sleeve	A-SL164	PHOTO Sleeve Length from Cap to Hem (Short Sleeve)	Critical	0	0	14 1/2	0	0	0	0	14 1/2	
Neck	A-NE023	Front Neck Drop - HPS to Overlap	Non-Critical	1/8	1/8	8 1/2	0	0	8 1/4	- 1/4	9 1/8	RVSD: ADJUSTS AS UNDERWRAP CIRC. REDUCES
Neck	A-NE010	Back Neck Drop - HPS to Top Edge	Non-Critical	1/8	1/8	5/8	0	0	1	3/8	1	KEEP
Neck	A-NE004	Neck Width at HPS - Edge to Edge	Non-Critical	1/8	1/8	10	0	0	10 1/4	1/4	9	RVSD: REDUCE - 1 1/4"
				0	0	0	0	0	0	0	0	
Waist	A-WA073	Self Sash Height- Along seam	Non-Critical	0	0	2	0	0	2	0	2	
Waist	A-WA070	Waist Tie End Length	Non-Critical	1/4	1/4	5 1/4	0	0	5 5/8	3/8	5 5/8	KEEP
Waist	A-WA071	Waist Tie Length at Wearer's Left at Bottom Hem	Non-Critical	1/8	1/8	30 1/2	0	0	30 1/4	- 1/4	32 1/4	RVSD LENGTHEN +2"
		Waist Tie Length at Wearer's Left at Top Edge		0	0	28 1/4	0	0	28 1/4	0	30 1/4	RVSD LENGTHEN +2"
Waist	A-WA072	Waist Tie Length at Wearer's Right at Bottom Hem	Non-Critical	1/8	1/8	25 3/4	0	0	25 1/2	- 1/4	23 1/2	RVSD SHORTEN - 2"
		Waist Tie Length at Wearer's Right at Top Edge		0	0	23 5/8	0	0	23 1/2	- 1/8	21 1/2	RVSD SHORTEN - 2"
		Bra Keep Placement from Neck Edge		0	0	3/8	0	0	3/8	0	3/8	
		Bra Keep Length-Snap Cntr - Cntr		0	0	2	0	0	2	0	2	

Section	POM #	POM Name	Criticality	Tol (+)	Tol (-)	Requested Meas.	Vendor Meas.	Vendor Delta	Internal Meas.	Internal Delta	Revised Meas.	Comments
		WR SS Tie Wrap Escape Point Height		0	0	1 1/4	0	0	1 1/4	0	1 1/4	
		WR SS Tie Wrap Escape Point Plcmnt @ 'X' frm Hem		0	0	5 5/8	0	0	5 1/2	- 1/8	4 1/4	RVSD: TRANSP E LOWERING 1 1/4"



PLM Product #:	135506	Product Carryover:	No
Product Description:	LUCY TOP	Primary Material:	Voile BCI TEXTURED YD COTTON CRINKLE
Brand:	Madewell	Material Supplier:	TEAMKIT
Sub-brand:		Supplier Article #:	TK3749
Gender / Age:	Womens	Source:	Fashion Accessories_
Department:	W SHIRTS	Spec Status:	Initial Development
Class:	W SHIRTS TOPS	Photo Approved:	Yes
Sub Class:	W SHIRTS TOPS SS	Size Definition:	MADEWELL Missy--Alpha:XXS-3X
Season:	Madewell Womens Apparel Summer 2020	Base Size:	M



135506 LUCY TOP:3rd Fit 396477

UOM:Fractional in

Request Owner: Caetlyn Carbuhn

Sample Size: M

Request Date: 02/20/2020

Sample Execution Quality:

Request Type: Fit

Colorway:

Evaluation Date:

Evaluation Status:

Resubmit

Evaluation Comments:

02.20.2020:

*AH SADDLE IS POINTY @ SS X SLV I/S JOIN; SEE IMAGE; RESHAPE RAGLAN SEAMS FOR A CURVED SADDLE SHAPE

*REDUCE FRT RAGLAN SEAM -1/2" AND TRANSPOSE SEAM @ NECKLINE LOWERING 3/8" ; FRT RAGLAN SM = 6 3/8" RVSD

*X-FRT POM DESCRIPTION ADJUSTS TO 7" FRM HPS; AS FRT RAGLAN SMS TRANPOSE LOWERING 3/8" E. SIDE THE SEAMS SHIFT INWARD -1/4" E. SIDE @ 11 1/2" X-FRT RVSD

*BACK RAGLAN SEAM SHOULD INCREASE+1/2" AND SHOULD BE RESHAPED @ AH SADDLE @ 12 1/4" RVSD

*REDUCE SLV OPENING CIRC. @ BAND ONLY -1/2 @ 12 1/2" RVSD

*SLV LENGTH IS TOO LONG AND INSEAM DOES NOT BALANCE W/ SLV O/A . REDUCE -1" @ OVERARM @ 12 1/2" RVSD I/S SHORTENS -1" AND ADJUSTS W/RESHAPING AH SADDLE

*CF SNAP PLACEMENT IS OFF; REDUCE UNDERWRAP/OVERAP CF SIDES -1/2" E. BLENDING TO 0" @ SWEEP; THIS ADJUSTS SNAP PLACEMENT TO BE @ 9 1/4" FND RVSD

*CHEST CIRC. REDUCES W/ CF WRAP PANELS -1/2" E. WR/WL SIDES TO 0" @ SWEEP = 40" RVSD

*SWEEP CIRC. IS WINGING OUT/ IS STRETCHED @ HEMLINE SIDE SEAMS; REDUCE KICK -1/4" E. WR/WL SIDES @ 39" RVSD OVERLAP RELAXED UNTIED

*KEEP BND *REDUCE BCK NECK WIDTH -1 1/4' @ 9" RVSD

*TRANSPOSE WL TIE EXIT PLACEMENT FROM SS LOWERING 1 1/4" @ 4 1/4" RVSD

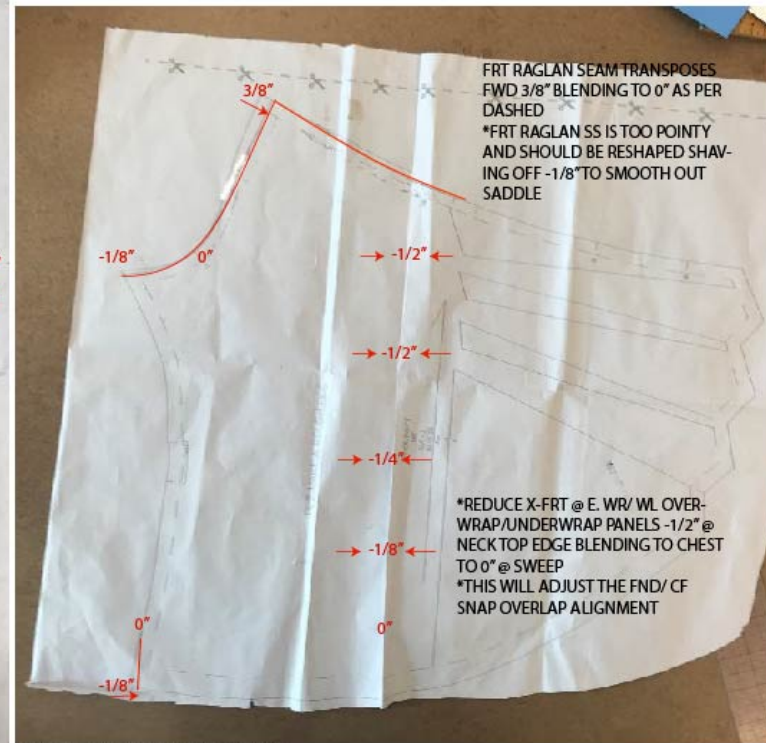
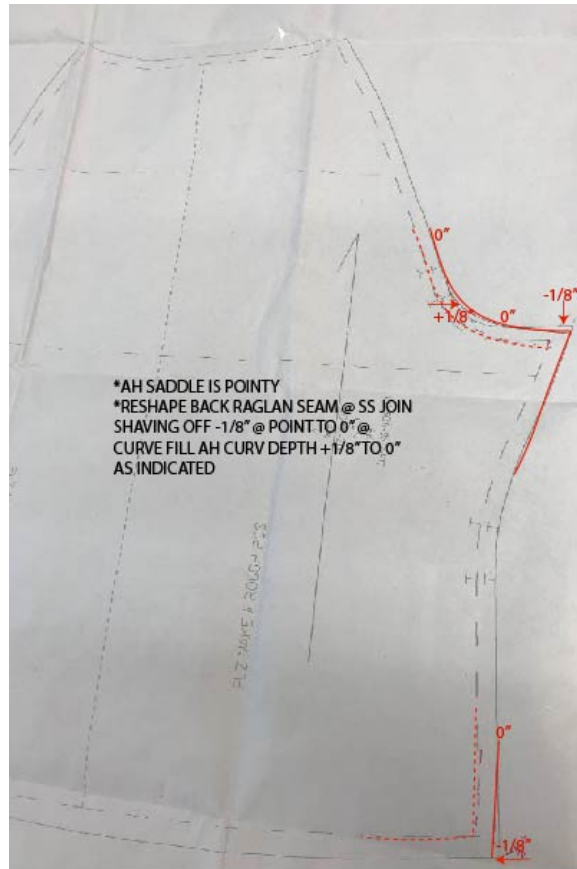
*SHORTEN WR TIE LENGTH -2" @ TOP & BTM

*LENGTHEN WL TIE LENGTH +2" @ TOP & BTM

*ALL ELSE REFER TO SPECS AND DIGITALS

PLM Product #: 135506
Product Description: LUCY TOP
Brand: Madewell
Sub-brand:
Gender / Age: Womens
Department: W SHIRTS
Class: W SHIRTS TOPS
Sub Class: W SHIRTS TOPS SS
Season: Madewell Womens Apparel Summer 2020

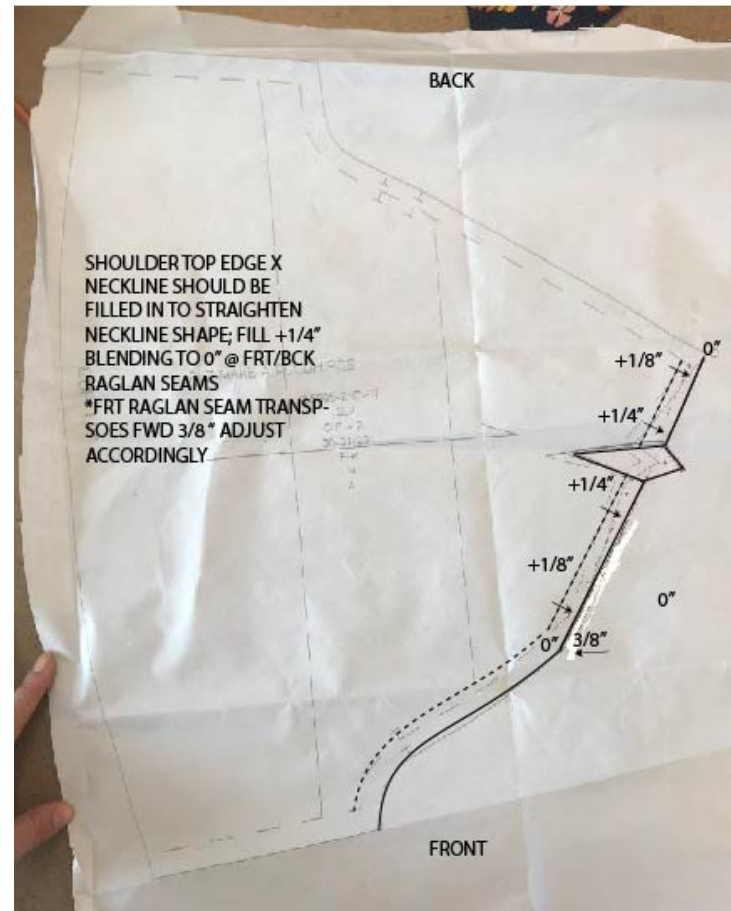
Product Carryover: No
Primary Material: Voile BCI TEXTURED YD COTTON CRINKLE
Material Supplier: TEAMKIT
Supplier Article #: TK3749
Source: Fashion Accessories_
Spec Status: Initial Development
Photo Approved: Yes
Size Definition: MADEWELL Missy--Alpha:XXS-3X
Base Size: M



*SIDE SEAM WINGS OUTWARD; SHAVE
 OFF -1/8" @ HEM SS E. CF/CB-WR/WL
 SIDES TO RESHAPE
 SILHOUETTE BLENDING TO 0" AS PER
 DASHED
 *SWEEP CIRC REDUCES -1/2" TOTAL

PLM Product #: 135506
Product Description: LUCY TOP
Brand: Madewell
Sub-brand:
Gender / Age: Womens
Department: W SHIRTS
Class: W SHIRTS TOPS
Sub Class: W SHIRTS TOPS SS
Season: Madewell Womens Apparel Summer 2020

Product Carryover: No
Primary Material: Voile BCI TEXTURED YD COTTON CRINKLE
Material Supplier: TEAMKIT
Supplier Article #: TK3749
Source: Fashion Accessories_
Spec Status: Initial Development
Photo Approved: Yes
Size Definition: MADEWELL Missy--Alpha:XXS-3X
Base Size: M





PLM Product #:	135506	Product Carryover:	No
Product Description:	LUCY TOP	Primary Material:	Voile BCI TEXTURED YD COTTON CRINKLE
Brand:	Madewell	Material Supplier:	TEAMKIT
Sub-brand:		Supplier Article #:	TK3749
Gender / Age:	Womens	Source:	Fashion Accessories_
Department:	W SHIRTS	Spec Status:	Initial Development
Class:	W SHIRTS TOPS	Photo Approved:	Yes
Sub Class:	W SHIRTS TOPS SS	Size Definition:	MADEWELL Missy--Alpha:XXS-3X
Season:	Madewell Womens Apparel Summer 2020	Base Size:	M



001 : SHORT SLEEVE PEPLUM BLOUSE

BOM: Colorway - Material Color

Section: Main Materials

Placement	Material	Supplier	Material ID	Supplier Article Number	Quantity	BOM UOM	PP0005 Small Aloha Dark Baltic	Comments
THROUGHOUT BODY UNLESS OTHERWISE NOTED	Voile BCI TEXTURED YD COTTON CRINKLE	TEAMKIT	32028	TK3749	1.700	Linear Yard	PP0005 Small Aloha Dark Baltic	

001 : SHORT SLEEVE PEPLUM BLOUSE

BOM: Colorway - Material Color

Section: Aesthetic Trims

Placement	Material	Supplier	Material ID	Supplier Article Number	Quantity	BOM UOM	PP0005 Small Aloha Dark Baltic	Comments
ALL TOP STITCHING & CONSTRUCTION	Sew Thread Thread DUAL DUTY COTTON WRAP/POLY CORE THREAD	COATS	14111		1.000		DTM	
MKTG. SET	Sew Thread Thread DUAL DUTY COTTON WRAP/POLY CORE THREAD	COATS	14111		1.000		DTM	
(1) AT CF CROSS OVER + (1) EXTRA	Snap Hardware BABY SNAP	Factory Sourced	14110		2.000		BLACK	

001 : SHORT SLEEVE PEPLUM BLOUSE

BOM: Colorway - Material Color

Section: Technical Trims

Placement	Material	Supplier	Material ID	Supplier Article Number	Quantity	BOM UOM	PP0005 Small Aloha Dark Baltic	Comments
AT INSIDE SHOULDER	BRA KEEP		0		1.000			

001 : SHORT SLEEVE PEPLUM BLOUSE

BOM: Colorway - Material Color

Section: Wash and Dry Processes

Placement	Material	Supplier	Material ID	Supplier Article Number	Quantity	BOM UOM	PP0005 Small Aloha Dark Baltic	Comments
30 MIN GARMENT WASH			0		1.000		30 MIN GARMENT WASH	

001 : SHORT SLEEVE PEPLUM BLOUSE		BOM: Colorway - Material Color					Section: Labels	
Placement	Material	Supplier	Material ID	Supplier Article Number	Quantity	BOM UOM	PP0005 Small Aloha Dark Baltic	Comments
PLS. REFER TO LABEL PLACEMENT PAGE	Woven Label MADEWELL WOVEN MAIN END FOLD LABEL: MWFA-0457 (BLACK), MWFA-0423 (IVORY) 12 X 55	Sourcing Solutions International Llc (Usa)	14182		1.000		*IVORY*	
PLS. REFER TO LABEL PLACEMENT PAGE	Woven Label MADEWELL SIZE/COO LABEL_MWFA-0426 (IVORY), MWFA-0459 (BLACK) 34(H) x 10(W) mm-flat	Sourcing Solutions International Ltd (Hong Kong)	14113		1.000	Piece	COL# WHITE	
PLS. REFER TO LABEL PLACEMENT PAGE	Printed Label INTERNATIONAL CARE/CONTENT LABEL_#101 158x30mm	Avery Dennison Hong Kong B.V.	11043		1.000	Piece	WHITE GROUND/BLACK PRINT	
PLS. REFER TO LABEL PLACEMENT PAGE	Printed Label TRACKING LABEL_JCPL510 12X36mm	Avery Dennison Hong Kong B.V.	11046		1.000	Piece	WHITE GROUND/BLACK PRINT	
PLS. REFER TO LABEL PLACEMENT PAGE	Printed Label MADEWELL DO WELL LOOP FOLD 25x31mm (w)-folded	Sourcing Solutions International Ltd (Hong Kong)	35186		1.000	Piece		

001 : SHORT SLEEVE PEPLUM BLOUSE		BOM: Colorway - Material Color					Section: Packaging	
Placement	Material	Supplier	Material ID	Supplier Article Number	Quantity	BOM UOM	PP0005 Small Aloha Dark Baltic	Comments
	PACKING		0		1.000			