

Honeywell

DESIGNER SERIES

Cool Mist Humidifier

Owner's Manual



HUL430 SERIES

Questions? Contact us

Call: **1-800-332-1110**

Email: **ConsumerRelations@HelenofTroy.com**

Visit: **www.HoneywellPluggedIn.ca**

⚠️ IMPORTANT SAFETY INSTRUCTIONS

READ AND SAVE THESE SAFETY INSTRUCTIONS BEFORE USING THIS HUMIDIFIER

When using electrical appliances, basic precautions should always be followed to reduce the risk of fire, electric shock, and injury to persons, including the following:

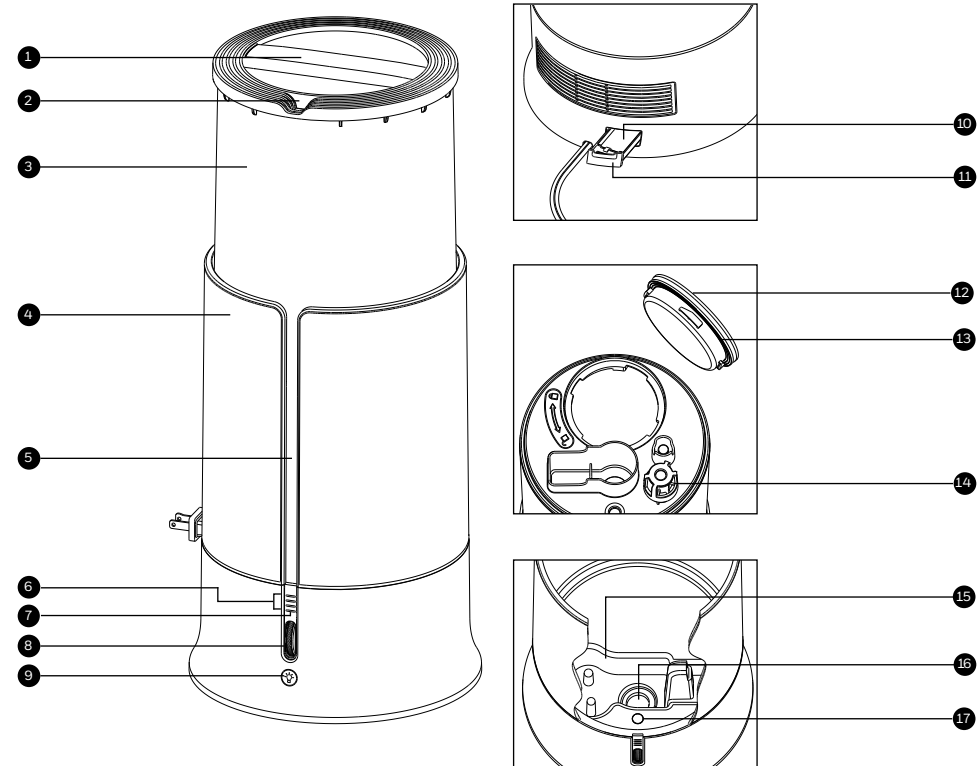
1. The humidifier should **ALWAYS** be placed on a firm, flat, waterproof surface at least four feet (1.2m) away from bedside, 12 inches (30cm) from the wall and out of reach of children and pets. Be sure the humidifier is in a stable position and the power cord is away from heated surfaces and out of the way to prevent the humidifier from being overturned.
2. The humidifier should not be left unattended, especially in a closed room since air could become saturated and may cause personal injury or property damage.
3. Before using the humidifier, extend the cord and inspect for any signs of damage. **DO NOT** use the unit if the cord has been damaged. **DO NOT** operate with power cord coiled or with twist tie in place.
4. The humidifier has a polarized plug (one blade is wider than the other) as a safety feature. This plug will fit into a polarized outlet only one way. If the plug does not fit fully into the outlet, reverse the plug. If it still does not fit, contact a qualified electrician. **DO NOT** attempt to defeat this safety feature.
5. ⚠️ **CAUTION:** To avoid fire or electric shock hazard, plug the humidifier directly into a 120V AC electrical outlet. To avoid risk of fire, electric shock, or personal injury, **DO NOT** use an extension cord or power strip.
6. The humidifier should **ALWAYS** be unplugged and emptied when not in operation or while being cleaned. Shut off and unplug humidifier before moving. **DO NOT** move or tilt humidifier while it is in operation. Plug and unplug unit with dry hands. **NEVER** pull by cord.
7. **DO NOT** operate the humidifier without water. Turn off and unplug unit when tank is empty and the reset light is on.
8. Humidifier requires regular cleaning. Refer to and follow cleaning instructions.
9. **DO NOT** operate outdoors; this humidifier is intended for indoor residential use only.
10. **DO NOT** cover or insert objects into any openings on the unit.
11. **DO NOT** block intake or output vents.
12. **DO NOT** attempt to repair or adjust any electrical or mechanical functions on this humidifier. Doing so will void your warranty.
13. **DO NOT** place in direct sunlight, high temperature areas or near computers or sensitive electronic equipment.
14. **DO NOT** touch the nebulizer while the unit is plugged in, as burns could result.
15. **DO NOT** add any medications, inhalants, scented products or essential oils into the Base, Water Reservoir or Water Tank.
16. For Residential Use Only.

SAVE THESE INSTRUCTIONS.

GETTING TO KNOW YOUR COOL MIST HUMIDIFIER

How it Works

Water is released from the Water Tank into the Reservoir. A Nebulizer vibrates at ultrasonic frequency, breaking the water into a fine mist. The mist is quietly propelled by a fan up a vertical Mist Chamber to the Mist Outlet where the cool, visible mist enters the room. This humidifier will shut off when the water level is low or when the tank is removed from the base.



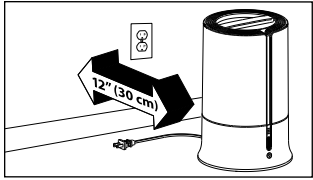
Components

- | | |
|--------------------------|------------------------|
| 1. Tank Handle | 10. Essential Oil Pad |
| 2. Mist Outlet | 11. Essential Oil Tray |
| 3. Water Tank | 12. Tank Cap |
| 4. Housing | 13. Gasket |
| 5. Water Window | 14. Float |
| 6. Mist Level Indicators | 15. Reservoir |
| 7. Refill Light | 16. Nebulizer |
| 8. Mist Control Wheel | 17. Tank Light |
| 9. Tank Light Button | |

SETTING UP YOUR HUMIDIFIER

Unpack the Humidifier

Keep this instruction manual for reference



Remove packaging materials.

Remove twist tie and extend power cord. Place on a firm, level, water resistant surface a minimum of 12" (30cm) from any walls.

Hard Water and White Dust

High mineral content in your water, also known as hard water, may cause a white mineral residue to accumulate on surfaces in the room near the humidifier. This mineral residue is commonly referred to as white dust. The higher the mineral content (hardness) of your water, the greater the potential that an ultrasonic humidifier may produce white dust.

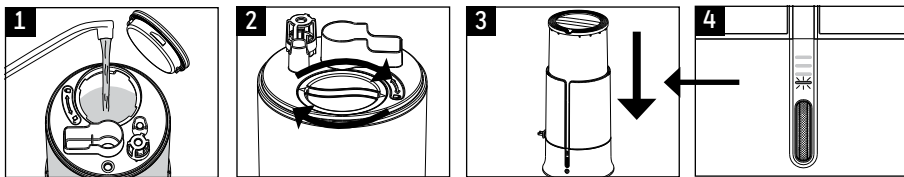
White dust is not a result of a defect or flaw in the humidifier. It is a result of the amount of minerals suspended in the water you are using.

FILLING/REFILLING

NOTE: Tank should be carried using two hands; one hand on the Tank Handle and the other supporting the bottom of the Tank.

Manufacturer and Distributor will not accept responsibility for property damage caused by water spillage.

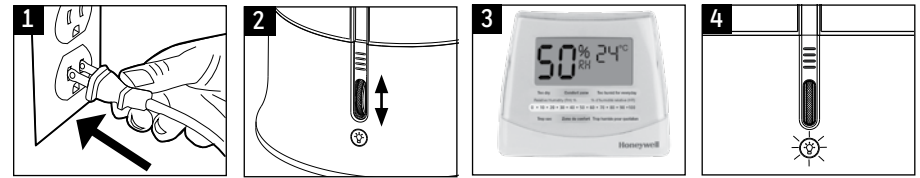
This humidifier holds 1.25 gallons (4.5 liters) of water (tank and reservoir combined).



Filling

1. Remove Water Tank and turn upside down. Remove Tank Cap by turning counter clockwise (left). Fill Tank with cool water. **DO NOT** fill with warm or hot water.
2. Replace Tank Cap by turning clockwise (to right) to screw back in place. **DO NOT** over-tighten.
3. Place Tank in humidifier Housing. Water will drain from the Tank into the Reservoir when the Plunger is engaged.
4. When the Tank is empty, the humidifier will shut off and the refill light will turn on. Refill the tank following the instructions above.

USING YOUR HUMIDIFIER



NOTE: Position humidifier to direct mist output away from walls, furniture and bedding.

1. **Power On:** With the Mist Control Wheel in the OFF position, plug the filled humidifier into a polarized 120V outlet.

⚠ CAUTION: TO AVOID ELECTRIC SHOCK, DO NOT PLUG HUMIDIFIER INTO AN OUTLET WITH WET HANDS.

2. Slide the Control Wheel up or down to reach desired humidity level. More lights mean more mist output. To turn off humidifier, turn Control Wheel down until it clicks and all lights turn off.

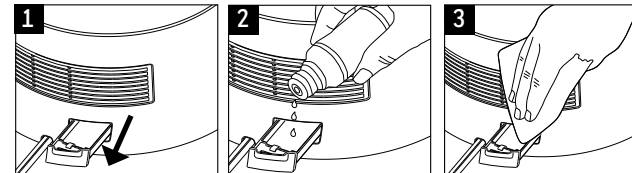
3. **Humidity Level:** When a comfortable humidity level is reached, turn Control Wheel to a lower setting. A comfortable humidity level is between 40-60%. Consider using a humidity monitor to display current room humidity and temperature, such as the Honeywell H10CV1 (Not included).

CONDENSATION: If you notice condensation on the walls, windows or around the humidifier, the humidity level is too high. Turn off humidifier until humidity level drops.

4. **Tank Light:** Press the Tank Light button to control the light in the Water Tank. There are three settings: Bright, Dim, or Off.

Using The Essential Oil Tray

This humidifier features an Essential Oil Tray that can be used with your favorite essential oil for added enjoyment. This not a diffuser - the oil does not come in contact with water and is passively evaporated into the air. Essential oils are not included.



1. Slide the tray open.
2. Add a few drops of essential oil to the Pad.

⚠ WARNING: DO NOT POUR ANY LIQUIDS INTO THE MIST OUTLET. DO NOT ADD LIQUID INHALANTS, ESSENTIAL OILS OR ANY ADDITIVES TO THE WATER TANK. DOING SO CAN HAVE ADVERSE EFFECTS ON THE HUMIDIFIER AND VOID THE WARRANTY.

3. To clean the Essential Oil Tray, gently wipe residue from the Tray.

Daily Maintenance

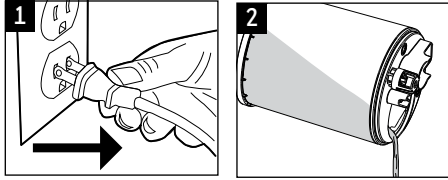
For best results, use fresh clean water every day.

CLEANING YOUR HUMIDIFIER

To keep your humidifier running efficiently, clean it regularly. Weekly cleaning is recommended. All maintenance should be done in the kitchen or bathroom on a water-resistant surface near a faucet.

To properly clean your humidifier, we recommend the separate processes of Scale Removal and Disinfecting. **These two processes must be performed separately.**

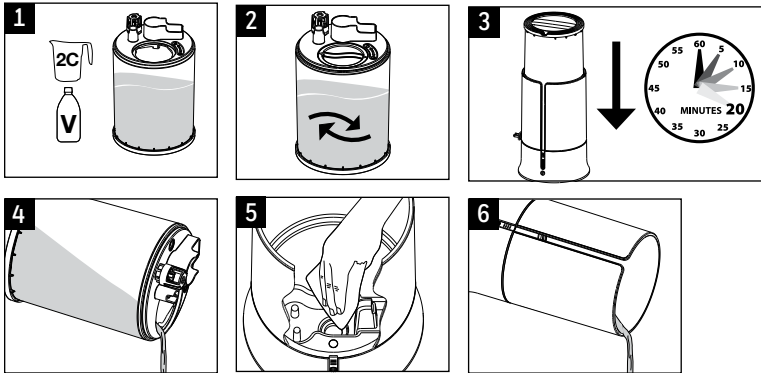
Before Cleaning



1. Turn off and unplug humidifier. Never clean the humidifier when it is running.
2. Remove Water Tank and empty completely. Remove any accessories from the water tank. We recommend changing water and airing out between uses.

Scale Removal

Follow steps 1-2 in *Before Cleaning* section, then follow the additional steps below.



1. Pour 2 cups (.5 liters) of undiluted distilled white vinegar into the Water Tank.
2. Replace Tank Cap and swish vinegar in Tank to coat the inside of the Water Tank.
3. Place Tank in Housing, allowing vinegar to drain into the Water Reservoir. The vinegar will loosen mineral buildup on the Nebulizer and Float, and in the bottom of the Tank. Soak for 20 minutes.
4. Remove Water Tank and empty vinegar into sink.
5. Gently wipe Nebulizer and Reservoir area with a soft cloth to remove loosened minerals.

NOTE: Nebulizer is fragile. Do not apply extreme pressure.

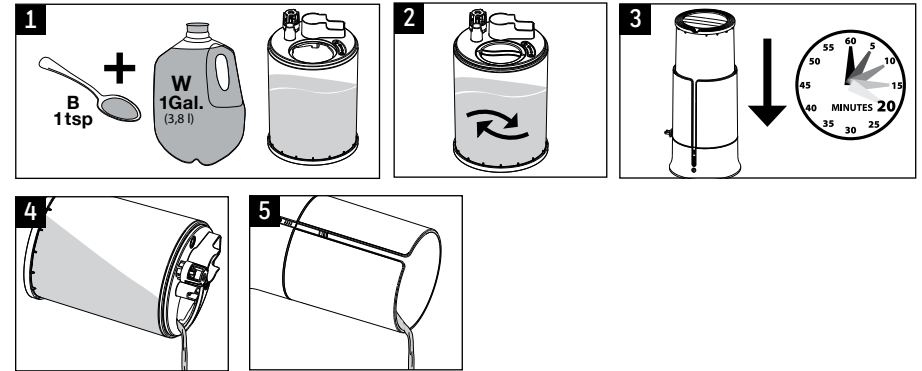
6. Pour vinegar from the Reservoir into the sink. Be sure to pour out of the back of the unit to avoid leaking into the control panel. Rinse Tank and Reservoir area with clean water until the smell of vinegar is gone.

⚠ CAUTION: DO NOT SUBMERGE HOUSING IN WATER. DOING SO WILL DAMAGE THE HUMIDIFIER AND VOID THE WARRANTY.

CLEANING YOUR HUMIDIFIER (CONTINUED)

Disinfecting

Before starting the disinfecting process, follow Steps 1-2 in *Before Cleaning* section.



NOTE: Bleach may stain clothes. It is recommended to wear rubber gloves during this process to protect your hands.

1. Add 1 teaspoon of bleach to 1 gallon (3.8L) of water and add to Water Tank.
2. Replace Tank Cap and swish bleach solution in Tank to coat the inside of the Water Tank.
3. Place Tank in Housing, allowing solution to drain into the Water Reservoir. Soak for 20 minutes.
4. Remove Water Tank and empty solution into sink.
5. Pour solution from the Reservoir into the sink. Be sure to pour out of the back of the unit to avoid leaking into control panel. Rinse Tank and Reservoir area with clean water until the smell of bleach is gone.

⚠ CAUTION: DO NOT SUBMERGE HOUSING IN WATER. DOING SO WILL DAMAGE THE HUMIDIFIER AND VOID THE WARRANTY.

END OF SEASON CLEANING AND STORAGE

Follow the cleaning instructions when the humidifier will not be used for at least one week, or at the end of the season.

At the end of the season, remove any accessories and discard. Allow the humidifier and all components to dry completely before storing.

DO NOT store humidifier with water inside the Reservoir or Water Tank.

Pack unit safely and store in cool, dry location.

TROUBLESHOOTING

If your Humidifier is not working properly, refer to the following:

PROBLEM	POSSIBLE CAUSE	SOLUTION
No lights	Unit not plugged in Unit is not turned on	Plug unit in Turn unit on
Power is on and little or no mist is produced	No water in Tank Mineral deposits on Nebulizer Power setting may be too low	Fill Water Tank Clean Nebulizer (Refer to <i>Cleaning Your Humidifier</i> section) Turn Control Wheel to higher setting
Water leaks from Base	Tank may be damaged Tank Cap is not tight Tank Cap Gasket may be missing	Check for cracks on tank and contact Consumer Relations to replace, if necessary. Tighten Tank Cap Check to see if Gasket is attached to inside of Cap; contact Consumer Relations for replacement
Condensation on windows and walls, or area around humidifier is damp	Mist intensity is set too high for room size or current humidity level Humidifier may be too close to wall or window	Turn off unit or decrease output to low setting or open door to the room Move humidifier away from wall or direct mist output away from wall or window

NOTE: Failure to keep this unit clean from mineral deposits normally contained in any water supply will affect the efficiency of operation of this unit. Customer failure to follow these instructions may void the warranty.

CONSUMER RELATIONS

We are here to help.

Call us toll-free at: **1-800-332-1110**

In Canada email: ConsumerRelations@HelenofTroy.com

Or visit our website at: www.HoneywellPluggedIn.ca

Please be sure to specify **Model number HUL430**.

NOTE: if you experience a problem, please contact consumer relations first or see your warranty. Do not return to the original place of purchase. Do not attempt to open the electrical housing yourself, doing so may void your warranty and cause damage to the humidifier or personal injury.

SPECIFICATIONS

Electrical rating: 120V, 60 Hz, 0.4A

Capacity: 1.25 gallons (4.7 L)

If you experience a problem, please contact Consumer Relations. Do not return this humidifier to the original place of purchase.

2 YEAR LIMITED WARRANTY

You should first read all instructions before attempting to use this product.

- A.** This 2 year limited warranty applies to repair or replacement of product found to be defective in material or workmanship. This warranty does not apply to damage resulting from commercial, abusive, unreasonable use or supplemental damage. Defects that are the result of normal wear and tear will not be considered manufacturing defects under this warranty. **KAZ IS NOT LIABLE FOR INCIDENTAL OR CONSEQUENTIAL DAMAGES OF ANY NATURE, ANY IMPLIED WARRANTY OF MERCHANTABILITY OR FITNESS FOR A PARTICULAR PURPOSE ON THIS PRODUCT IS LIMITED IN DURATION TO THE DURATION OF THIS WARRANTY.** Some jurisdictions do not allow the exclusion or limitation of incidental or consequential damages or limitations on how long an implied warranty lasts, so the above limitations or exclusions may not apply to you. This warranty gives you specific legal rights, and you also may have other rights which vary from jurisdiction to jurisdiction. This warranty applies only to the original purchaser of this product from the original date of purchase.
- B.** At its option, Kaz will repair or replace this product if it is found to be defective in material or workmanship.
- C.** This warranty does not cover damage resulting from any unauthorized attempts to repair or from any use not in accordance with the instruction manual.
- D.** This warranty does not cover the filters, pre-filters, UV bulbs or other accessories (if included) except for material or workmanship defects.

Call us toll-free at 1-800-332-1110 or e-mail: ConsumerRelations@HelenofTroy.com

Please be sure to specify a model number located on the box and the back and bottom of your unit.