

PORTAL FRAME ANCHOR  
DETAIL @ BILL

LINE OF 1/2"x30"x1/2" THK SS  
BASE PLATE UNDERNEATH  
THE SLAB

3/8"x9" LG THRU BOLT  
SAE GRADE 5 w/ NUT  
& LOCK WASHERS  
13"x13"x3/8" THK SS  
BASE PLATE

3/8" THK STIFFENER  
PLATES

3/8" THK SS DOOR PORTAL

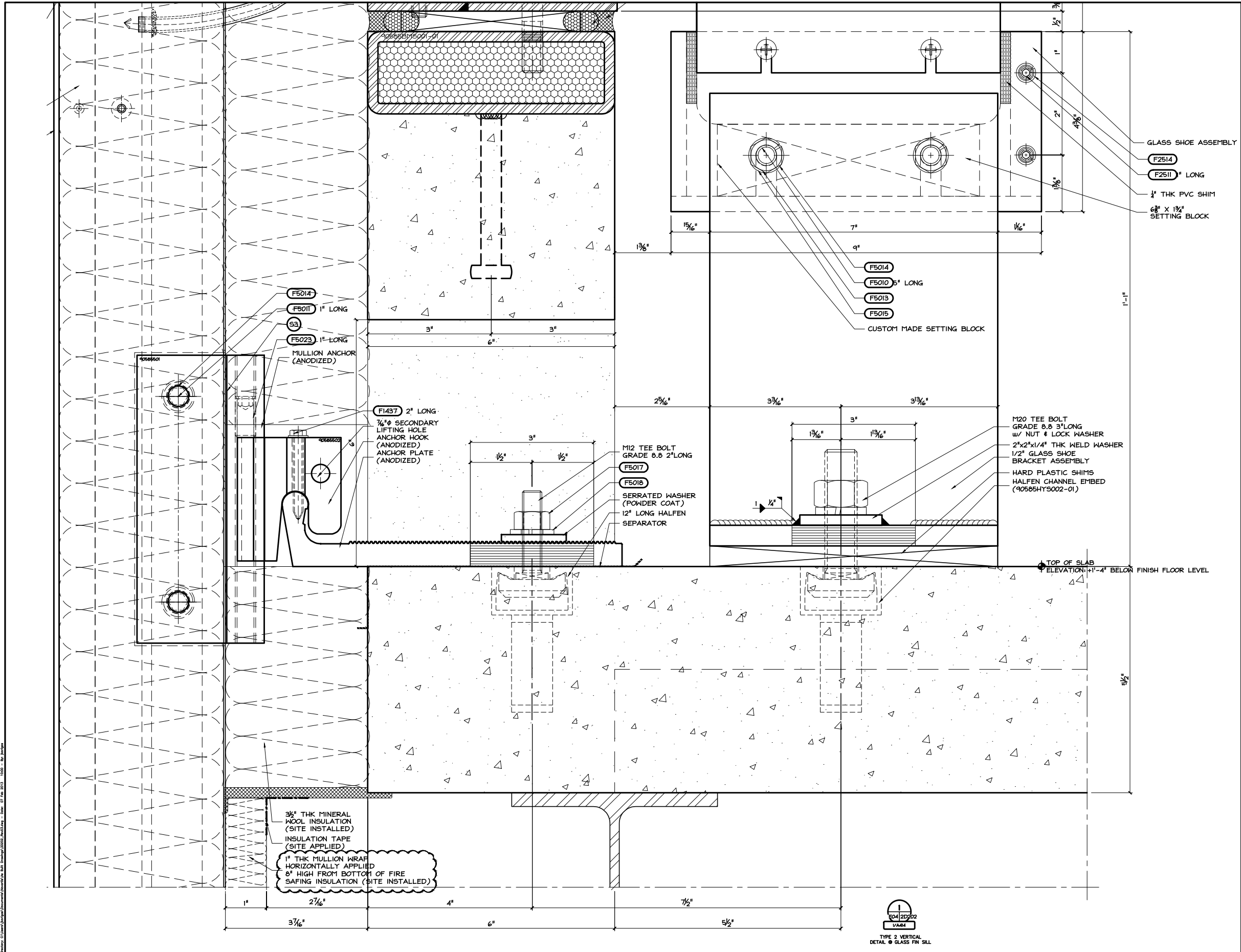
M20 TEE BOLT  
GRADE 8.8 3" LONG  
w/ NUT & LOCK WASHER

2"x2"x1/4" THK STEEL  
WELD WASHER

Gg. 22 SS FLASHING  
WATERPROOFING  
MEMBRANE OVER  
FLASHING NOT BY PNA

Drawing: C:\Users\jshah\Documents\Projects\2023\20230303\_Bill\_Design\2023\_Bill\_Design.dwg - Date: 07 Feb 2023 09:48 - 30 Layers





GLASS SHOE ASSEMBLY  
 F2514  
 F2511" LONG  
 1/4" THK PVC SHIM  
 6" X 1 3/4" SETTING BLOCK

F5014  
 F5010 5" LONG  
 F5013  
 F5015  
 CUSTOM MADE SETTING BLOCK

F5014  
 F5011 1" LONG  
 33  
 F5023 1" LONG  
 MULLION ANCHOR (ANODIZED)

F1437 2" LONG  
 3/8" SECONDARY LIFTING HOLE ANCHOR HOOK (ANODIZED)  
 ANCHOR PLATE (ANODIZED)

M12 TEE BOLT GRADE 8.8 2" LONG  
 F5017  
 F5016  
 SERRATED WASHER (POWDER COAT)  
 12" LONG HALFEN SEPARATOR

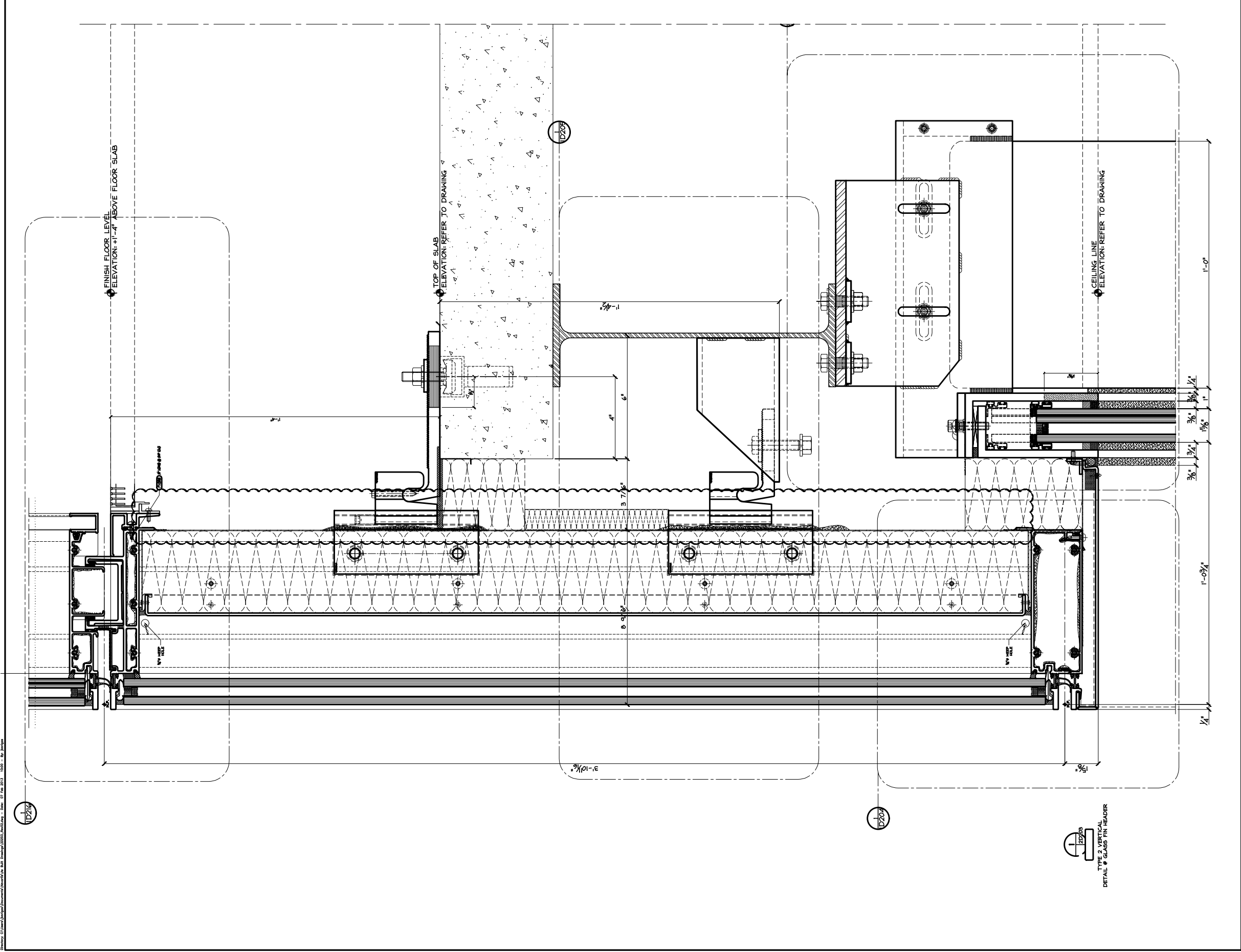
M20 TEE BOLT GRADE 8.8 3" LONG w/ NUT & LOCK WASHER  
 2"x2"x1/4" THK WELD WASHER  
 1/2" GLASS SHOE BRACKET ASSEMBLY  
 HARD PLASTIC SHIMS  
 HALFEN CHANNEL EMBED (90585HYS002-01)

TOP OF SLAB ELEVATION: +1'-4" BELOW FINISH FLOOR LEVEL

3/8" THK MINERAL WOOL INSULATION (SITE INSTALLED)  
 INSULATION TAPE (SITE APPLIED)  
 1" THK MULLION WRAP HORIZONTALLY APPLIED 8" HIGH FROM BOTTOM OF FIRE SAFING INSULATION (SITE INSTALLED)

1  
 20/2022  
 1/4" x 1/4"  
 TYPE 2 VERTICAL DETAIL - GLASS FIN SILL

Drawing: C:\Users\jburke\Documents\AutoCAD\Bldg Design\2022\Arch\22.dwg - Date: 07 Feb 2023 10:55 - 16 Jun 2023



D2003  
TYPE 3 VERTICAL  
DETAIL OF GLASS FIN HEADER

