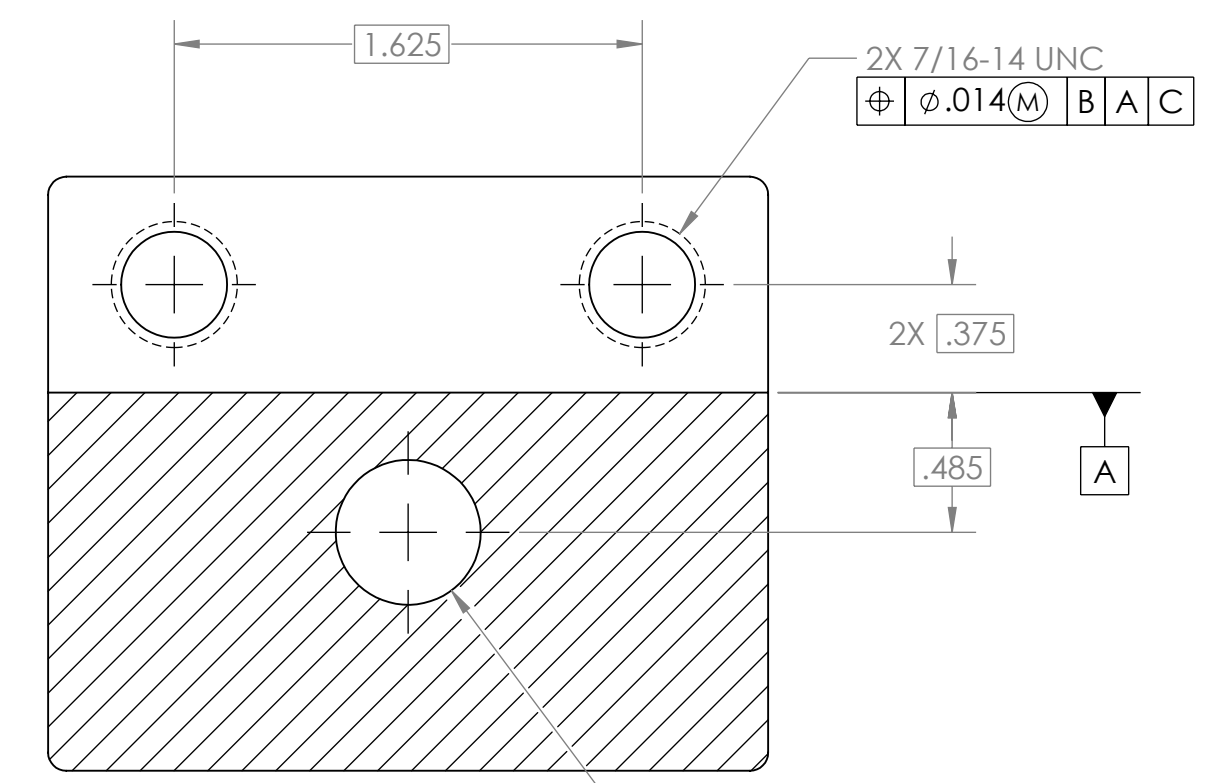


REVISIONS				
ZONE	REV.	DESCRIPTION	DATE	APPROVED

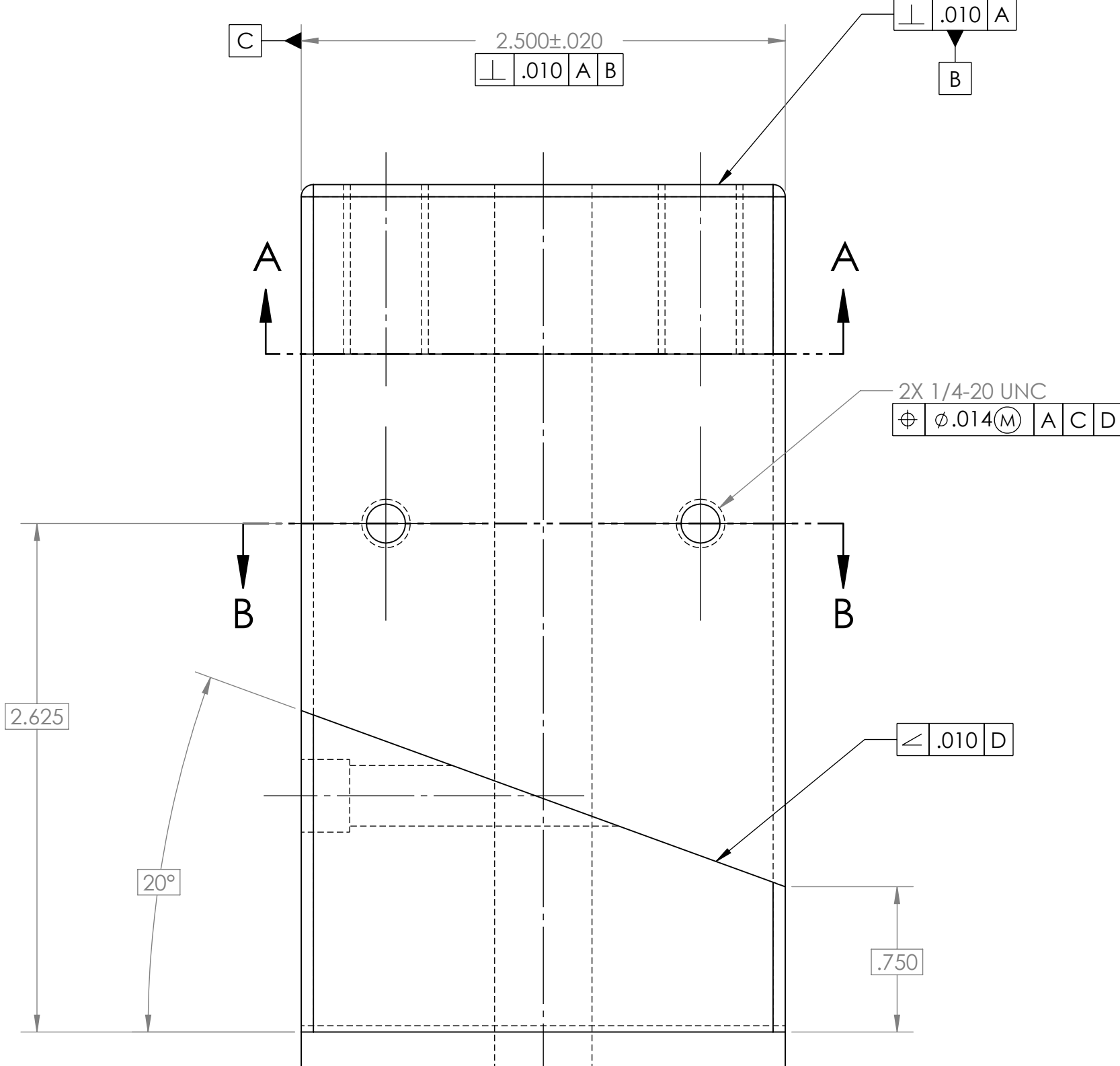
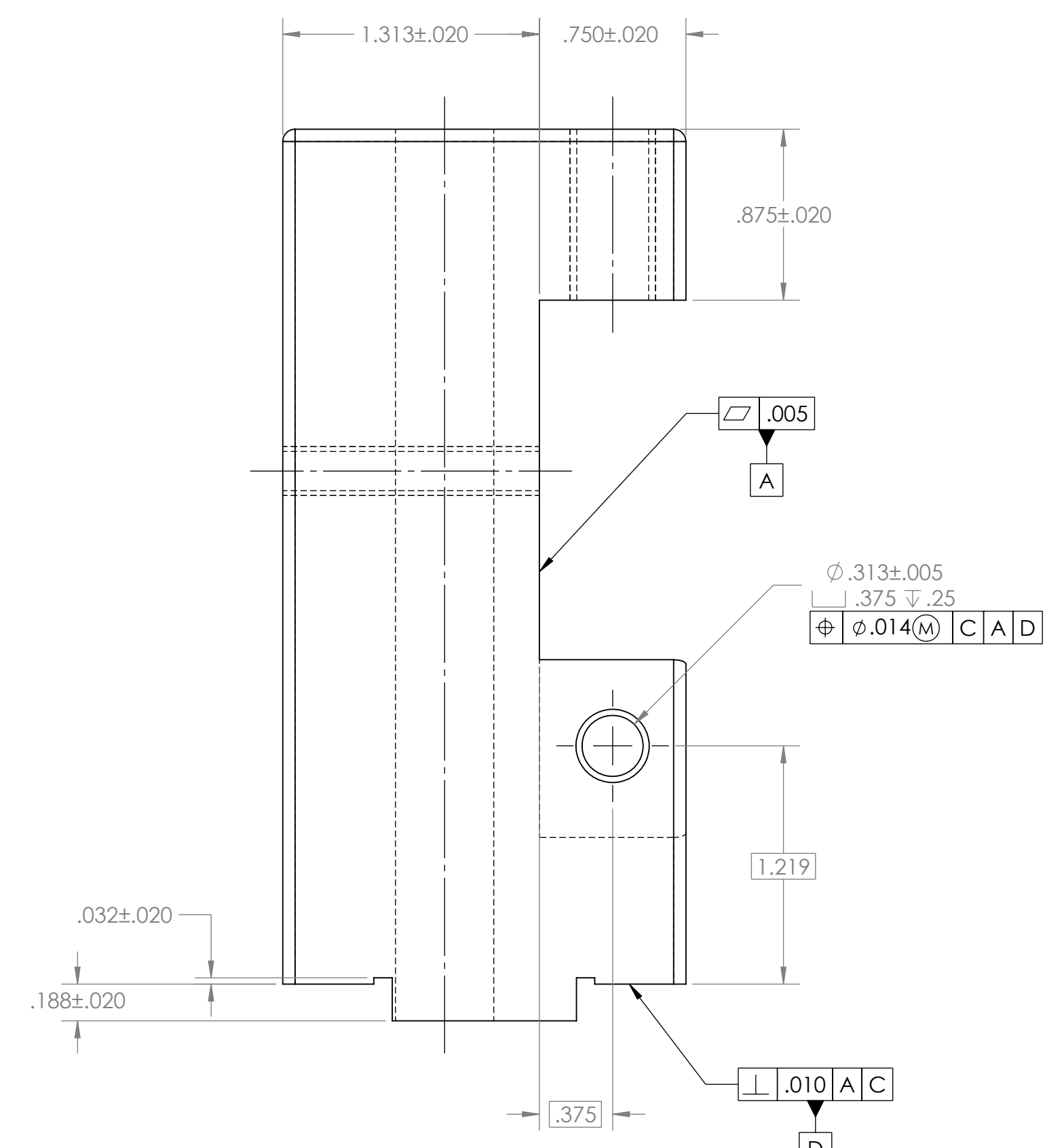
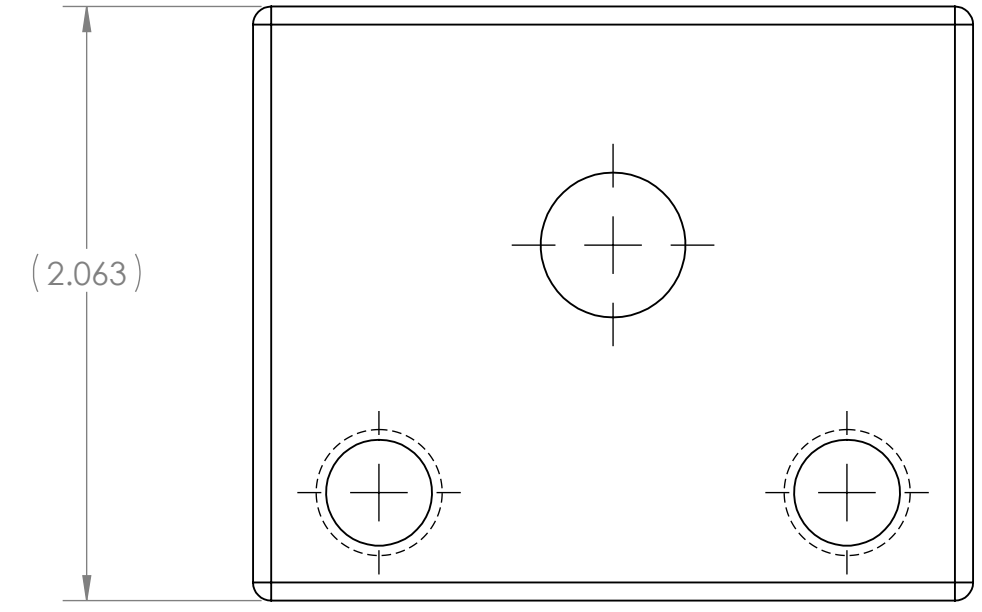
CAD MAINTAINED.  
CHANGES SHALL BE  
INCORPORATED BY  
THE DESIGN  
ACTIVITY.

**NOTES: UNLESS OTHERWISE SPECIFIED**

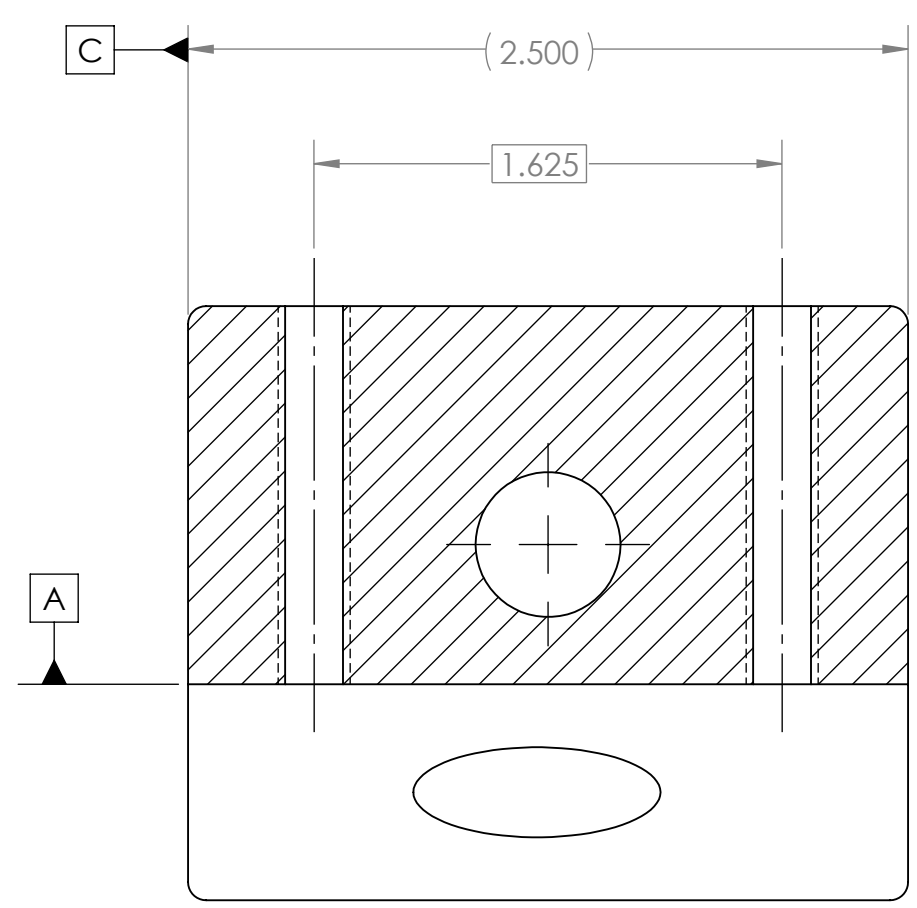
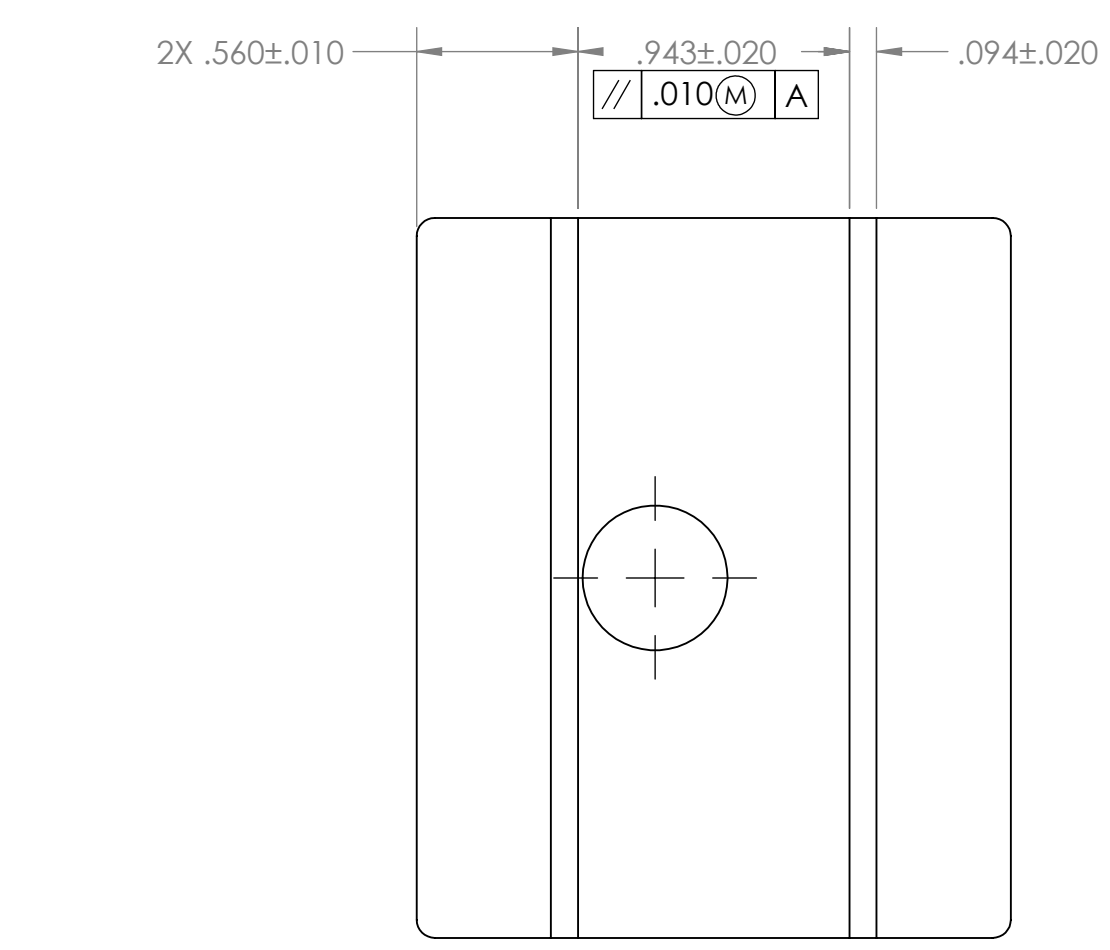
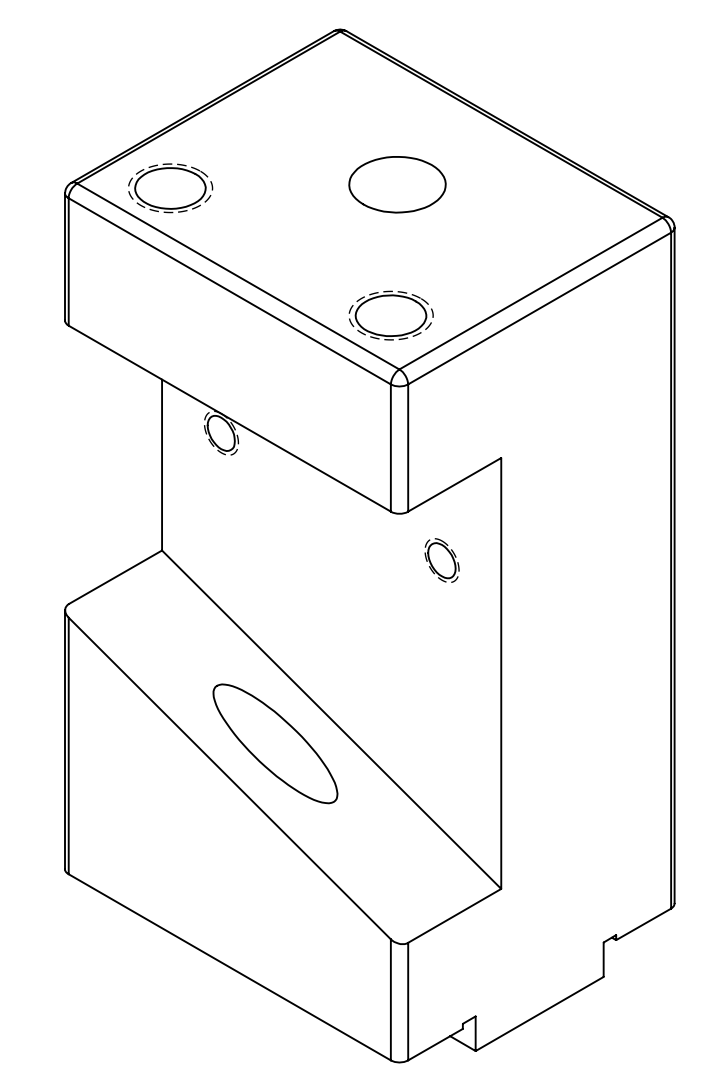
- INTERPRET DRAWING IN ACCORDANCE WITH INDUSTRY STANDARDS PRESCRIBED BY ANSI Y14.5 AND MIL-T-31000.
- MATERIAL: AISI TYPE A2 TOOL STEEL
- FINISH: CHEM FILM PER MIL-T-5541.
- REMOVE ALL BURRS AND SHARP EDGES.
- FILLETS AND ROUNDS, R.063
- RUBBERSTAMP PART NUMBER (.12 MAX. HEIGHT) USING STANDARD GOTHIC LETTERS AND NUMBERS WITH PERMANENT MARKING INK. LOCATION OPTIONAL OR LOCATED AS SHOWN
- SURFACE ROUGHNESS 125
- DO NOT SCALE DRAWING



SECTION A-A  
SCALE 1.5:1



SECTION B-B  
SCALE 1.5:1



PROPRIETARY AND CONFIDENTIAL  
THE INFORMATION CONTAINED IN THIS  
DRAWING IS THE SOLE PROPERTY OF  
LWTECH. ANY REPRODUCTION OR  
DISSEMINATION OF THIS DRAWING  
WITHOUT THE WRITTEN PERMISSION OF  
LWTECH IS PROHIBITED.

UNLESS OTHERWISE SPECIFIED:		NAME	DATE	LWTECH
DIMENSIONS ARE IN INCHES		WELLS	04/23/24	
TOLERANCES:		DRAWN		TITLE:
FRACTIONAL: 1/32		CHECKED		
ANGULAR: MACH ± 25° BEND ± 5°		ENG APPR.		TOOL POST BODY
TWO PLACE DECIMAL: ± .02		MEG APPR.		
THREE PLACE DECIMAL: ± .010		Q.A.		SIZE DWG. NO. REV
INTERPRET GEOMETRIC TOLERANCING PER:		COMMENTS:		
MATERIAL		NEXT ASSY		D E-677 #1 A
FINISH		USED ON		
DO NOT SCALE DRAWING		APPLICATION		SCALE: 1:1 WEIGHT: 4.94 LBS SHEET 1 OF 1