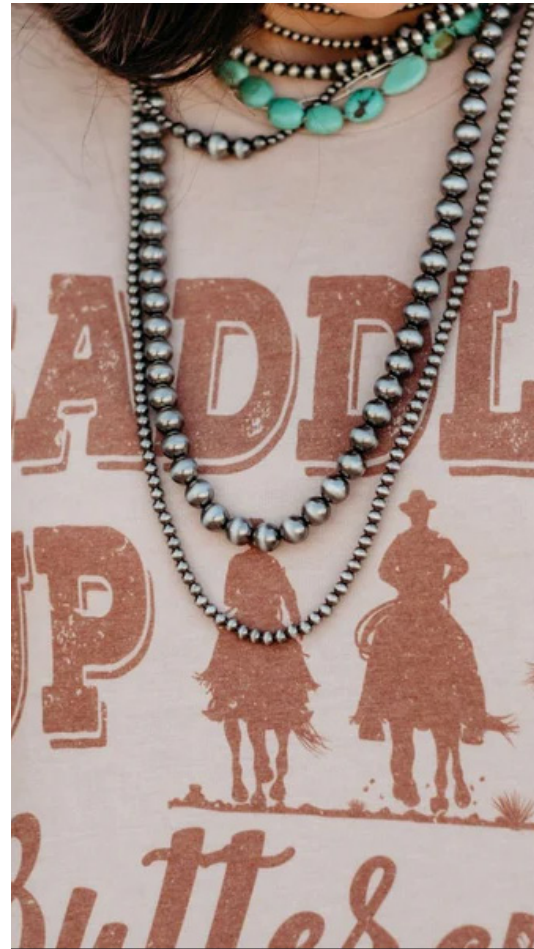


JEWELRY



KEY CALLOUTS:

- LAYERED PIECES
- SHELLS & PEARLS
- STATEMENT PIECES (Lainey Wilson & Kendra Scott)
- CHAIN/ROPE BANGLES



APPAREL & ACCESSORIES



KEY CALLOUTS:

- BOLO TIES
- LEATHER TASSEL KEY CHAIN KITS
- APPAREL PIECES
- LEATHER BANDS AND BELTS



FRAMES



KEY CALLOUTS:

- LEATHER
- COW HIDE
- NATURAL MATERIALS
- PEARL BEADING
- DENIM
- WEATHERED WOOD

