

# HD

# PIPE Inspection Camera

High Definition Video Inspection System

## Made In Taiwan Quality Guarantee

**PH7** series is our newest innovation to use 720p HD camera in a video pipe inspection system.

Not just a high definition display with scale up VGA image, true HD camera with crisp clear image provides professional users the best inspection facts for their maintenance jobs.

## Detachable Camera Head

Ø25mm, Ø28mm, or Ø30mm cameras based on the pipe sizes and their inspection needs. Locating function is integrated at the camera modules.

Ø30mm



Ø28mm



Ø25mm



 [Watch Video on YouTube](#) 

### Camera 25mm

- Smallest HD PIPE Inspection Camera
- Sphere head design for easy pipe passing
- Detachable connector design for easy changing cameras

### Camera 28mm

- Popular HD PIPE Inspection Camera
- Sphere head design for easy pipe passing
- Detachable connector design for easy changing cameras
- Capable of equipping transmitter for matching locator

### Camera 30mm

- Highest specification for HD PIPE inspection camera
- Equipping Self-Leveling device
- Detachable connector design for easy changing cameras
- Capable of equipping transmitter for matching locator

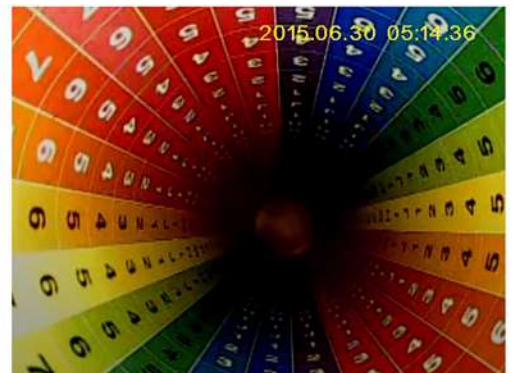
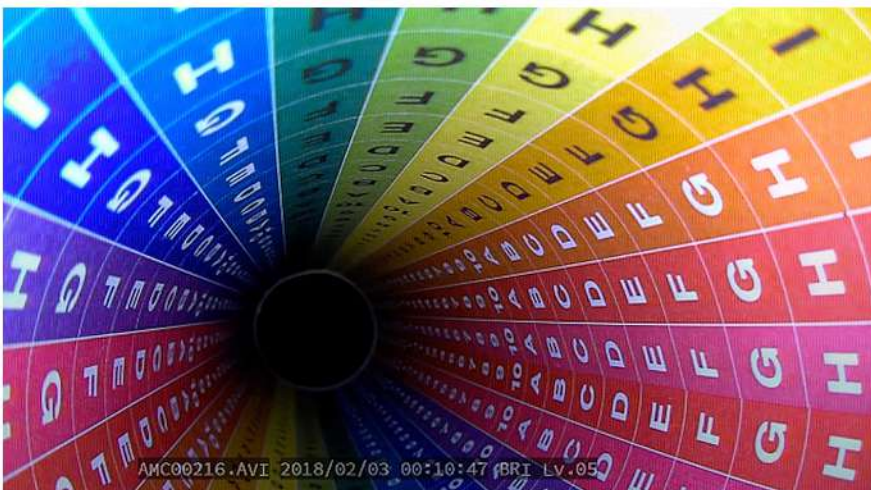


## KEY FEATURES

- True 720P HD Camera
- 7" color TFT LCD screen
- Built-in transmitter for locating function (optional)
- Universal ball mount and kick stand at the back of controller can set the controller at the best viewing angle and flexible operation
- Hand-strips and two sets of snapshot/ recording buttons provide better grip for left-handed and right-handed users.
- Text annotation function to enter comments through keyboard (PS/2)
- Sun screen protection is convenient for outdoor inspection
- Powerful Li-ion battery with long operation time of 6 hours
- Save your image and videos in SD card
- 60M Cable available
- WiFi LIVE Inspection with app (optional)



**HD**



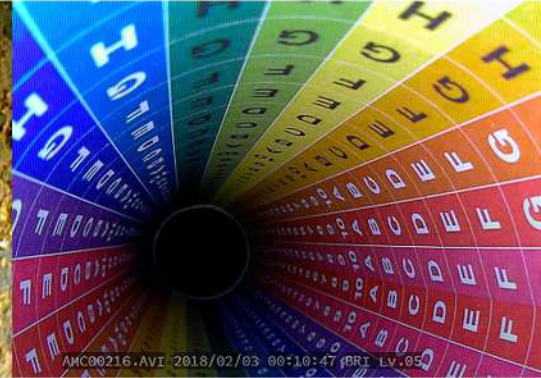
**CLEAR**



**SHARP**



**SATURATION**



### True 720P HD Camera

True 720P HD Camera provides super quality images "CLEAR", "SHARP", "SATURATION" for inspection to see.

### Control Panel

Adjust "Brightness", "Saturation", "Hue", "Sharp" according to the customer's habits and different environments to achieve the best optimization

### Meter / Footage Counter On Screen

Measurement is displayed directly on screen

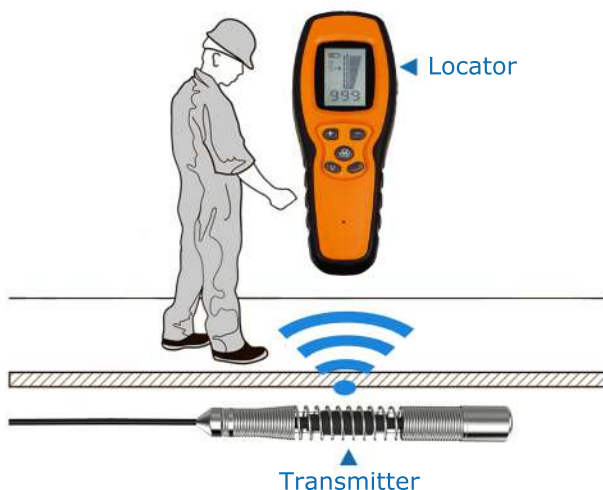


### 512 Hz Locator / Tracking System (Options Function)

Help you to know the camera location inside the pipes

### Wi-Fi LIVE Inspection (Options Function)

Support Android device LIVE inspection Via Wi-Fi connection



## Accessories



Lens Cover  
(available in Ø25/28mm)



Skid Brush  
(available in Ø25/28mm)



Orbit Glider  
(available in Ø25/28/30mm)



Locator & Transmitter  
(compatible to Ø28/30mm 512 Hz camera w/ 512 Hz transmitter)



WiFi Box & APP  
(Support Android System)

## Specification

Console System	
Display	7" Color TFT LCD / 16:9 Format
Resolution	1024 x 600
Snapshot	1280 x 720 , jpeg ( HD )
Recording	1280 x 720 , avi ( HD )
Storage	SD Card
Brightness Adjust	10 Levels
Battery	Built-in rechargeable Li-ion battery pack
Power Supply	Level VI , 100~240V AC in / 15V DC out
Battery lasting time	6H (battery status in display)
UI Languages	English,German,Traditional Chinese ...other
Operating Temperature	0 °C ~ 40 °C
Storage Temperature	-10 °C ~ 60 °C
Dimensions	260 x 160 x 70 mm
Weight	1.3 kg (2.86lb)

Camera Head			
Diameter	25 mm	28 mm	30 mm
Image Sensor	1 / 4 " Color CMOS		
Resolution	1280 (H) x 720 (V)		
D.O.F.	5cm ~ 80cm		
F.O.V.	100°		
Video Format	avi		
White Balance	Automatic		
Exposure	Automatic		
Transmitter	Unavailable	Available	
Self Leveling	NO		YES
Detachable Camera Head	YES		
Light Source	LEDs, 8(3Φ)+4(5Φ)		
Luminous intensity	3Φ : 850λnm, 5Φ : 850λnm		
Lamp Life	10000 hrs, median		
Operating Temperature	- 20° C ~ 70° C		
Storage Temperature	- 20° C ~ 70° C		
Relative Humidity	95% max		
Waterproof	IP67 (Insertion tube and tip)		
Cable			
Diameter	7.0 mm		
Material	Fiber Glass		
Length	30M / 40M / 60M		

## OME-TOP SYSTEMS CO., LTD

No.176-1, Zhongshan 2nd Rd., Luzhou Dist, New Taipei City 247, Taiwan.

Tel : +886-2-22880699 / Fax : +886-2-22889191

E-Mail : ome-top@omet-top.com

Website : www.ome-top.com.tw