

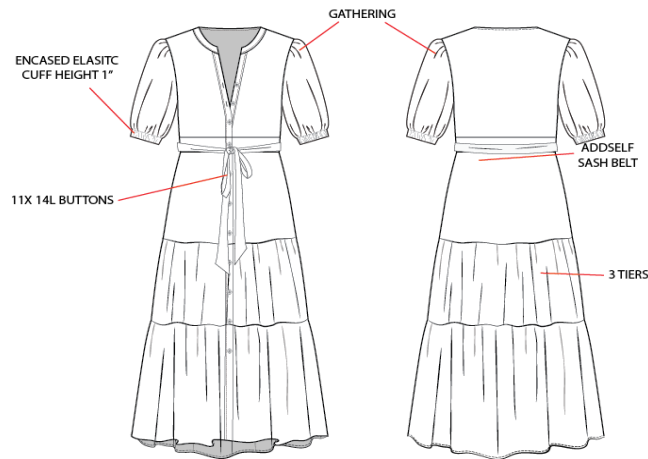
E- Lo LLC

Design Development Detail Page

Style #: WM6S171P6	Division/ Label: [REDACTED]	Description: TIERED BUTTON DOWN SS MIDI DRESS W/ SASH BELT
Design #: NX 2150	Customer:	ETD: 11/30/2025
Reference Style #:	Vendor Name:	Fabric: PRINTED CREPE CHIFFON
Block Pattern #: WM5F171P6	Factory Name: [REDACTED]	Size Range: XS-XXXL
Final Pattern #:	PO #: 9036905	SEASON: SPRING 2026
Date Created: 9/15/2025	Date Updated: 9/16/2025	

Development #: NX 2150-1
 DIVISION: NANETTE DRESSES
 DATE: 1/28/22
 *VERSION W/ SELF SASH BELT

PATTERN DUE BY 2/25/22



-LINED

- ADD SEL SASH BELT
- MAKE LENGTH FROM HPS: 44"
- MAKE SLEEVE CUFFS INTO ENCASED ELASTIC, CUFF HEIGHT WILL BE 1"
- ALL OTHER DETAILS SAME AS ON SAMPLE



MAKE IN SIZE 4

E- Lo LLC

Design Development Detail Page

Style #: WM6S171P6	Division/ Label: [REDACTED]	Description: TIERED BUTTON DOWN SS MIDI DRESS W/ SASH BELT
Design #: NX 2150	Customer:	ETD: 11/30/2025
Reference Style #:	Vendor Name:	Fabric: PRINTED CREPE CHIFFON
Block Pattern #: WM5F171P6	Factory Name: [REDACTED]	Size Range: XS-XXXL
Final Pattern #:	PO #: 9036905	SEASON: SPRING 2026
Date Created: 9/15/2025	Date Updated: 9/16/2025	

COLORWAY:
TEAL 2070-1 PRINT



FRONT

BACK

COLORWAY:
GREEN MULTI 1147-1 PRINT



COLORWAY:
SAND 1177-1 PRINT



COLORWAY:
IVORY GREEN MULTI 2025-1 PRINT



COLORWAY:
BLUE GREEN 124-2 PRINT



**E- Lo LLC
BOM**

Style #: WM6S171P6	Division/ Label: [REDACTED]	Description: TIERED BUTTON DOWN SS MIDI DRESS W/ SASH BELT
Design #: NX 2150	Customer:	ETD: 11/30/2025
Reference Style #:	Vendor Name:	Fabric: PRINTED CREPE CHIFFON
Block Pattern #: WMSF171P6	Factory Name: [REDACTED]	Size Range: XS-XXXL
Final Pattern #:	PO #: 9036905	SEASON: SPRING 2026
Date Created: 9/15/2025	Date Updated: 9/16/2025	

PLACEMENT	MATERIAL	COLOR 1	COLOR 2	COLOR 3	COLOR 4	COLOR 5	COLOR 6
SHELL	PRINTED CREPE CHIFFON	TEAL 2070-1 PRINT (NPR-2070-CW1)	GREEN MULTI 1147-1 PRINT (NPR-1147-CW1)	SAND 1177-1 PRINT (NPR-1177-CW1)	IVORY GREEN MULTI 2025-1 PRINT (NPR-2025-CW1)	BLUE GREEN 124-2 PRINT (MAW-124-CW2)	
LINING AT BODICE & SKIRT ONLY	POLY STRETCH	DTM TEAL (GROUND)	DTM GREEN (GROUND)	DTM SAND (GROUND)	DTM CREAM (GROUND)	DTM BLUE (POS 3)	
CENTERFRONT CLOSURE	BUTTON SIZE WILL VARY BASED ON SIZE RANGE 11X 16L ROUND 1/2 DOME PLASTIC SHANK BUTTONS (SZ. XS-L), 11X 20L ROUND 1/2 DOME PLASTIC SHANK BUTTONS (SZ. XL-XXXL)	DTM TEAL (GROUND)	DTM GREEN (GROUND)	DTM SAND (GROUND)	DTM CREAM (GROUND)	DTM BLUE (POS 3)	
SLEEVE CUFFS	ENCASED ELASTIC	DTM TEAL (GROUND)	DTM GREEN (GROUND)	DTM SAND (GROUND)	DTM CREAM (GROUND)	DTM BLUE (POS 3)	
SASH BELT	SELF SASH BELT W/ STRING LOOPS	DTM TEAL (GROUND)	DTM GREEN (GROUND)	DTM SAND (GROUND)	DTM CREAM (GROUND)	DTM BLUE (POS 3)	



PLACEMENT	MATERIAL	COLOR 1	COLOR 2	COLOR 3	COLOR 4	COLOR 5	COLOR 6	
ALL PARTS	THREAD	DTM TEAL (GROUND)	DTM GREEN (GROUND)	DTM SAND (GROUND)	DTM CREAM (GROUND)	DTM BLUE (POS 3)		NANETTE LÉPORE STUDIO
MAIN HANGTAG	NANETTE LÉPORE STUDIO HANGTAG	*SEE MATERIALS	*SEE MATERIALS	*SEE MATERIALS	*SEE MATERIALS	*SEE MATERIALS		
LABEL PLACEMENT	NANETTE LÉPORE STUDIO LABEL	*SEE MATERIALS	*SEE MATERIALS	*SEE MATERIALS	*SEE MATERIALS	*SEE MATERIALS		
								