

THE MUL

A super-size power tool, the Mul raises and lowers to hoist sheet material across construction sites quickly, and without power cables.

A VERSATILE PLATFORM FOR SMALL AND MIDSIZE CONSTRUCTION

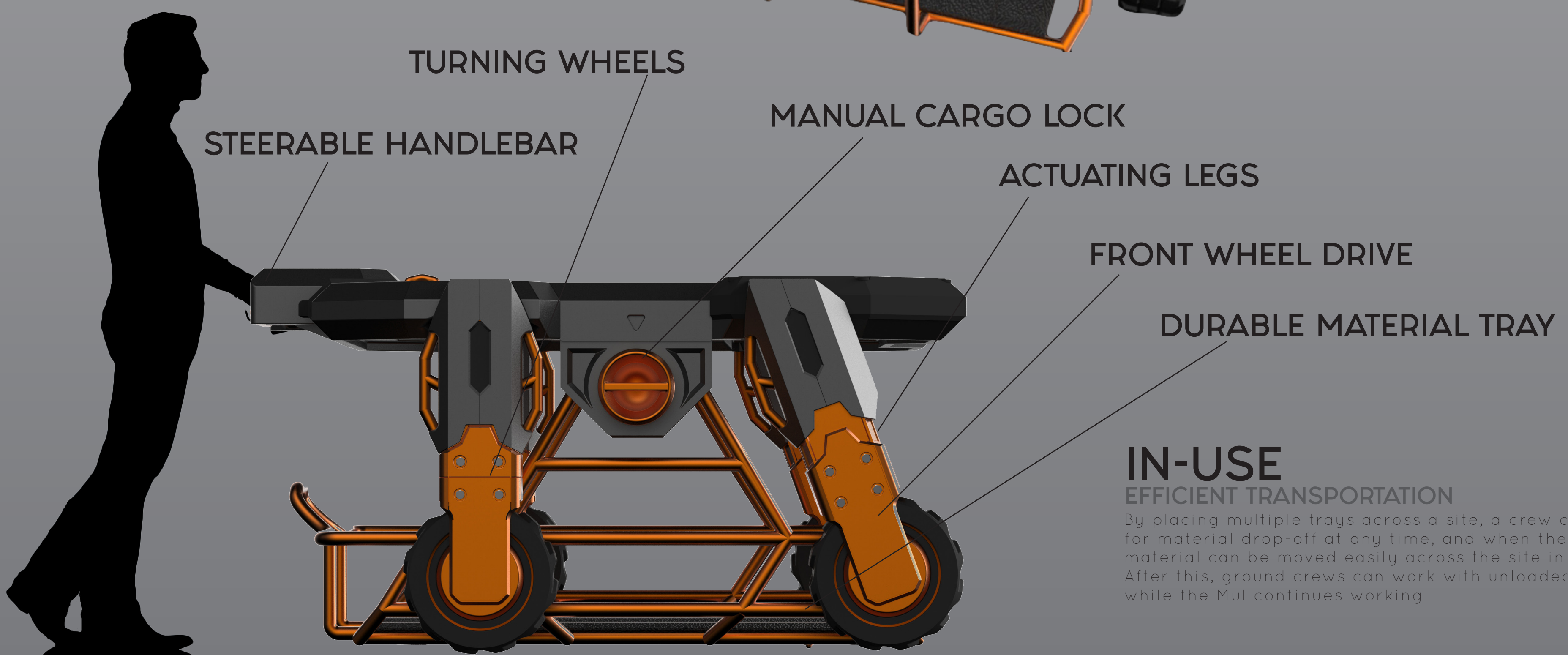
The bed is no slouch. It not only holds the Mul up structurally, it also provides cranes with a place to latch onto the Mul and raise it to higher floors since it can't be carried upstairs. This allows a Mul to operate across a vertical site.

POWER INCLUDED NO ASSEMBLY REQUIRED

Powered by two 6V batteries, the Mul can operate all day on one, but a redundant spare give you time to recharge one before the other expires. This keeps the Mul on its feet all day.

CONTROLS CAREFUL HANDLING

The clever handlebar engages an automatic brake if not squeezed with two hands. When squeezed, it engages the front wheel drive. If pulled, it undocks and allows for directional control over the Mul's two turning rear wheels.



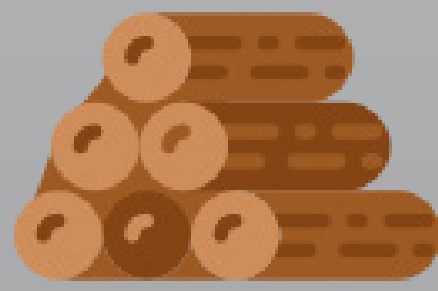
IN-USE EFFICIENT TRANSPORTATION

By placing multiple trays across a site, a crew can be ready for material drop-off at any time, and when they do arrive, material can be moved easily across the site in short time. After this, ground crews can work with unloaded material while the Mul continues working.



THE MUL

THE NEW
BEAST OF BURDEN



MOVES SHEET FAST

Capable of hauling a load of up to 700 lbs, the Mul is designed to move pallets of plywood, drywall, and even pipe.

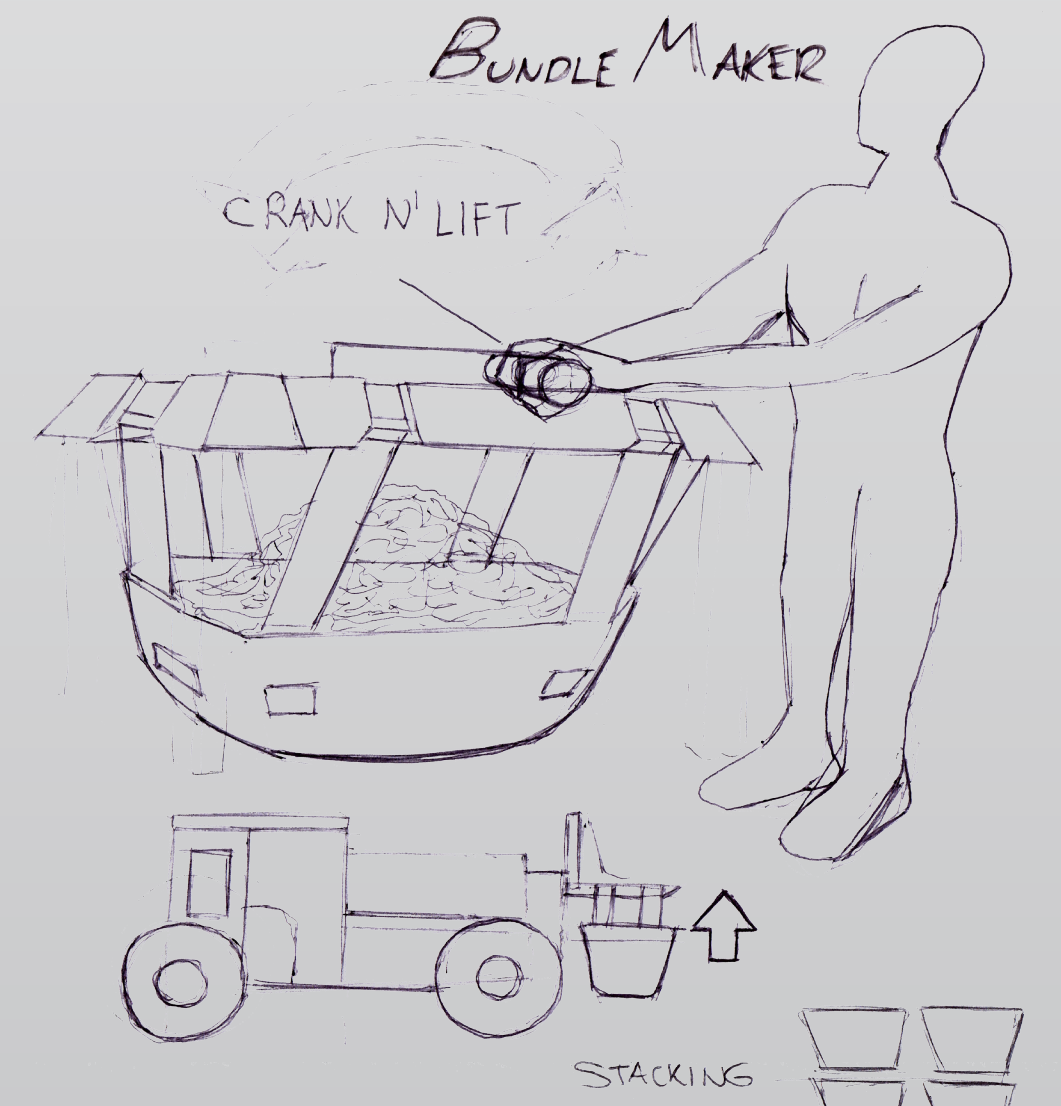
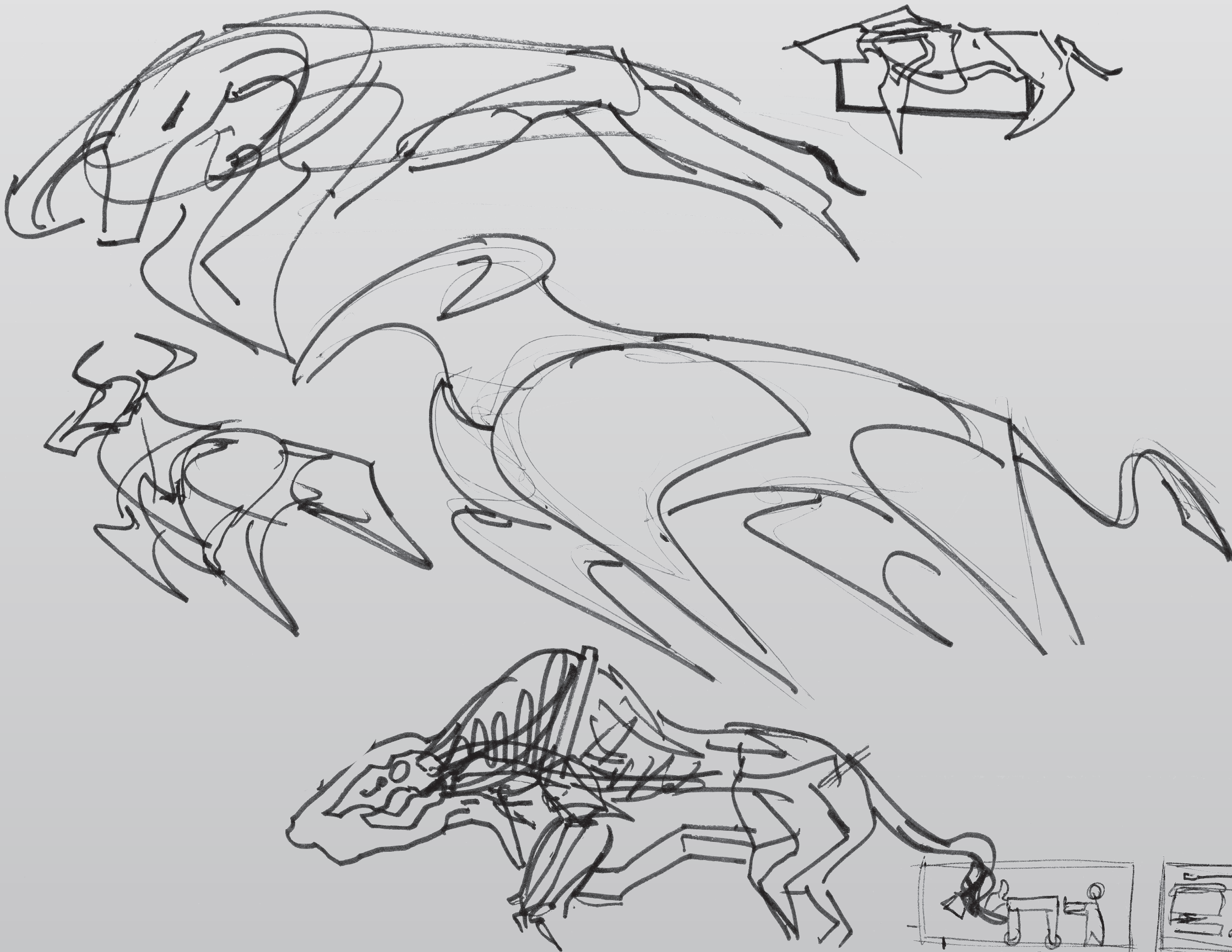
POWER

EFFICIENCY

CONTROL



GETTING TO THE MUL



THE MÜL

