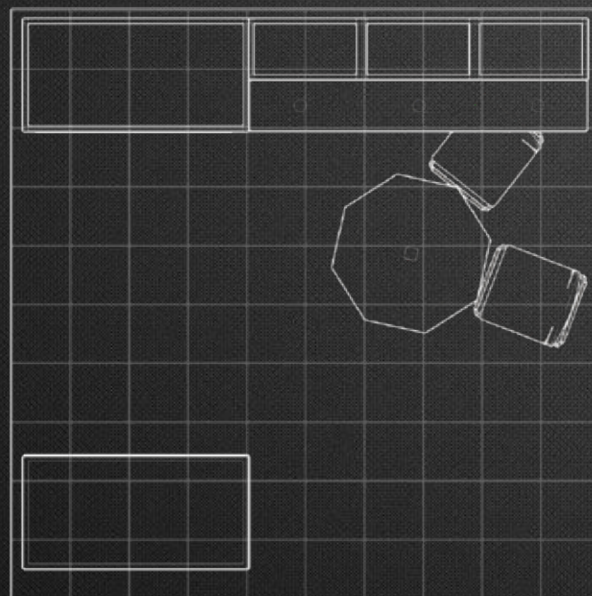


# MULTIQUAD KIT



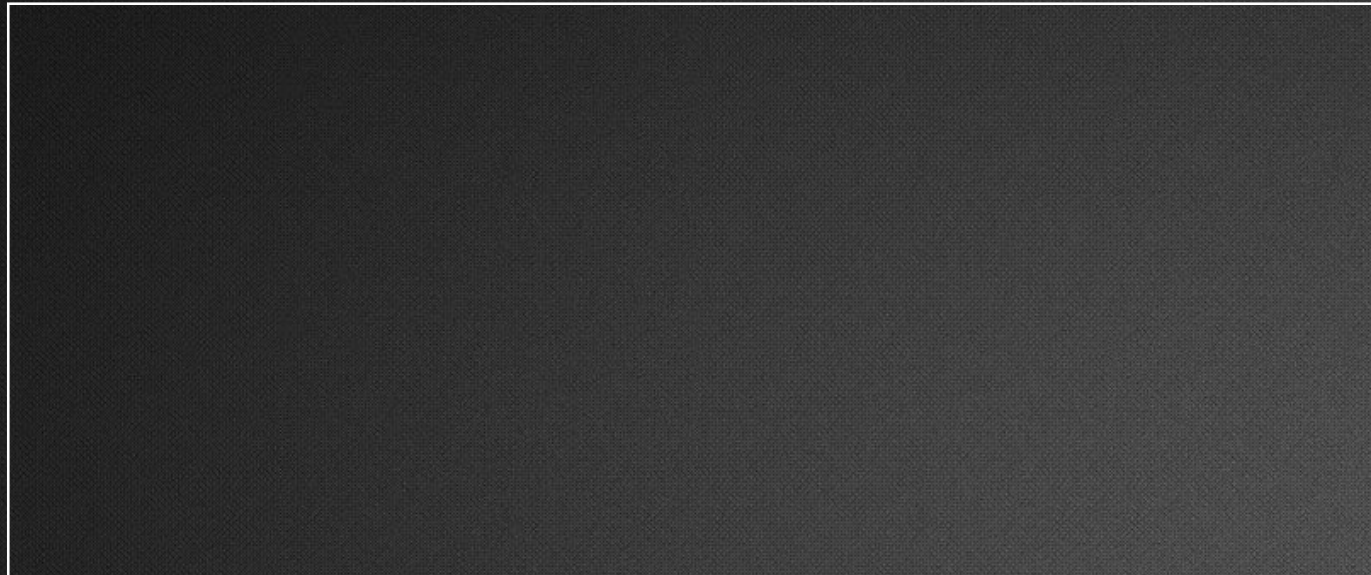
ORTHOGRAPHIC TOP VIEW

MULTIQUAD KIT #71511 10' X 10'

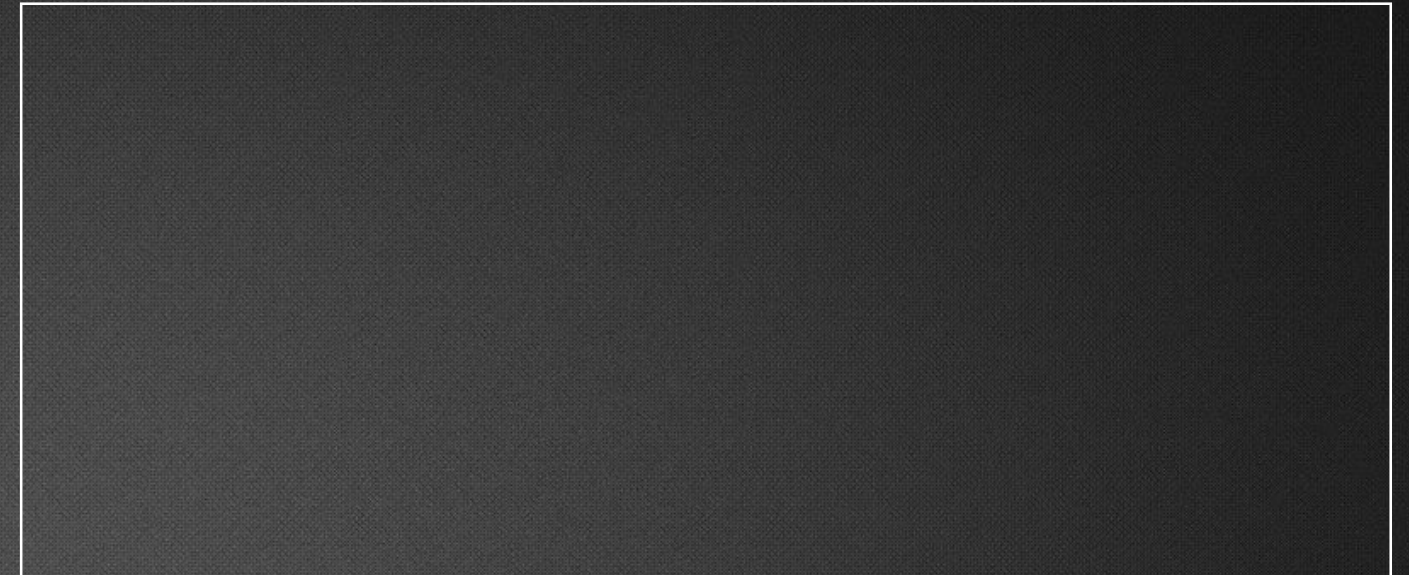


3401 Mary Taylor Road - Birmingham, AL 35235 - 800-747-EXPO - This item is protected as an unpublished work under US Copyright law, and is loaned to the recipient solely for use in conjunction with the recipient's business with ExpoDisplays. All renderings are conceptual and serve as representations only. ExpoDisplays reserves the right to make modifications to designs for structural, safety or engineering consideration without written permission.

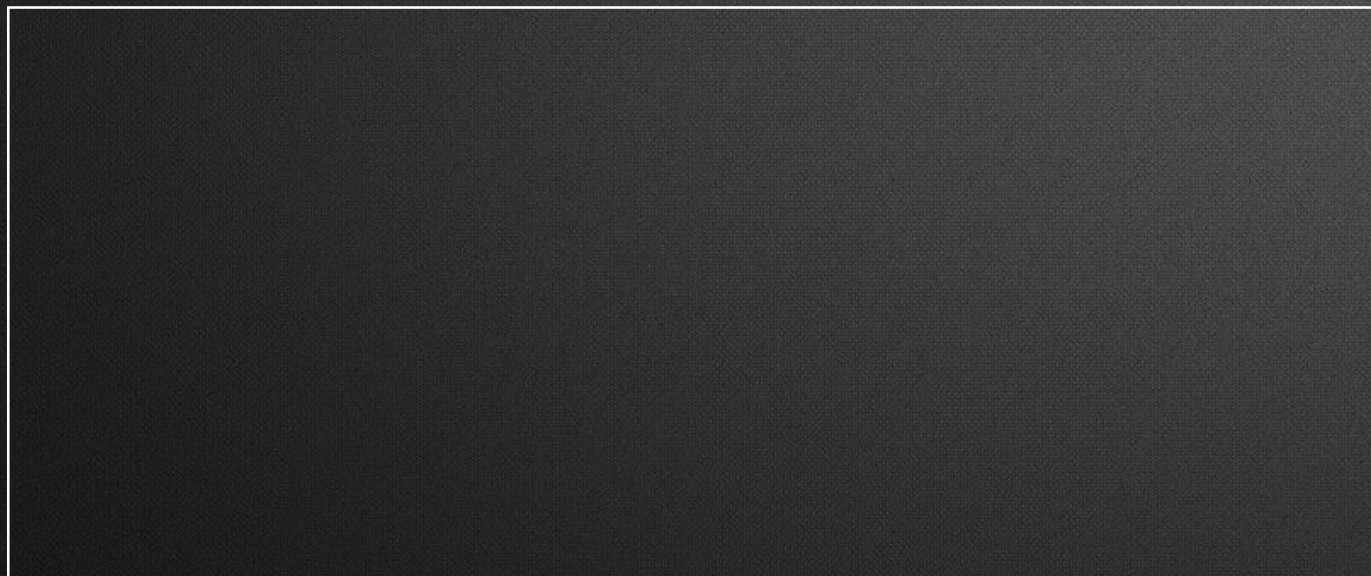
# DETAIL VIEWS



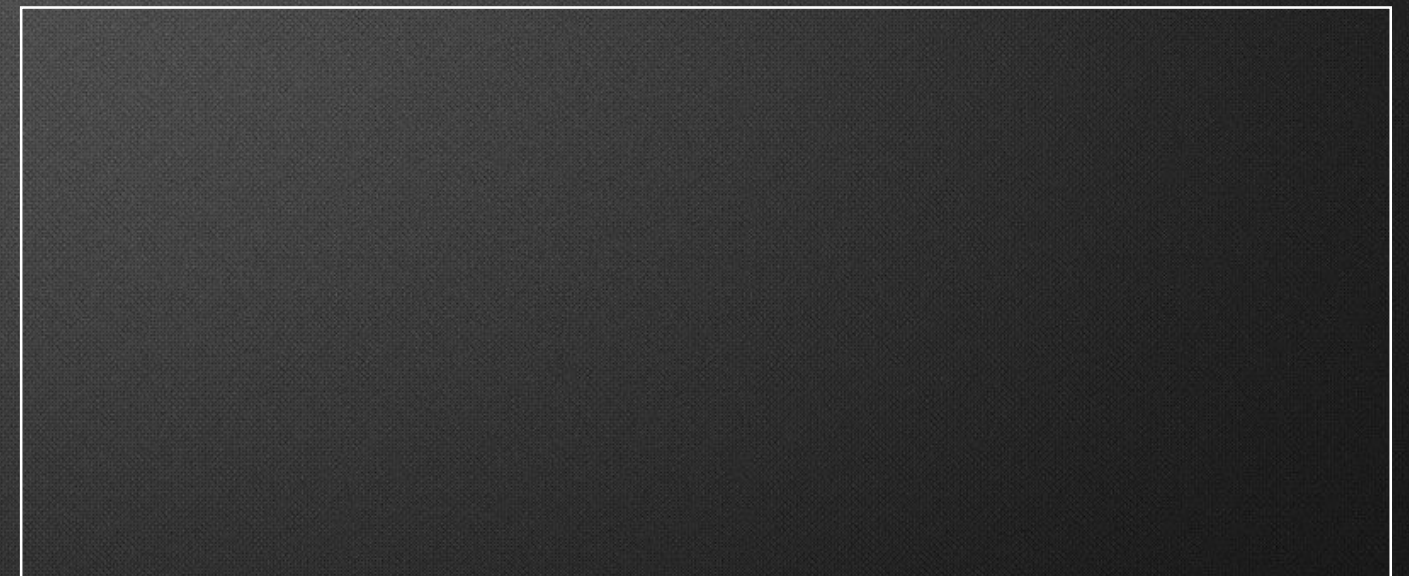
DETAIL VIEW A



DETAIL VIEW B



DETAIL VIEW C



DETAIL VIEW D

# CALLOUTS



MULTIQUAD KIT #71511 10' X 10'



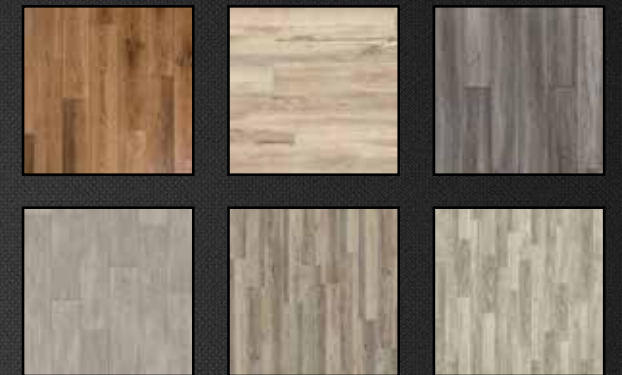
3401 Mary Taylor Road - Birmingham, AL 35235 - 800-747-EXPO - This item is protected as an unpublished work under US Copyright law, and is loaned to the recipient solely for use in conjunction with the recipient's business with ExpoDisplays. All renderings are conceptual and serve as representations only. ExpoDisplays reserves the right to make modifications to designs for structural, safety or engineering consideration without written permission.

# FINISHES

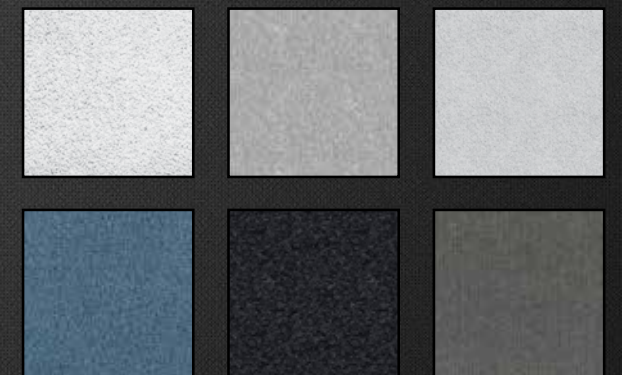
## COUNTERTOP OPTIONS:



## VINYL OPTIONS:



## CARPET OPTIONS:



# MULTIQUAD KIT

## KIT INCLUDES AS SHOWN:

- (1) MQX-F24: Max 2 x 4
- (1) MQ-SM4Q: Media Mount
- (1) MQ-F24: 2 x 4 Standard
- (1) MQ-F14: 1 x 4 Standard
- (1) MQ-FFC2323: 23" Canopy
- (1) MQ-FFC2346: 46" Canopy
- (1) MQX-F22C: 2 x 2 Max Counter
- (1) MQ-QTV42K: 2 Vertical Double Quads Hinged
  
- (36) MQ-Q2323: 23" x 23" Main Quads
- (4) MQ-Q1223: 12.125" x 23" Side Quads
  
- (5) SC50 Cases

TOTAL COST: \$11,085

