

4

3

2

1

D

D

C

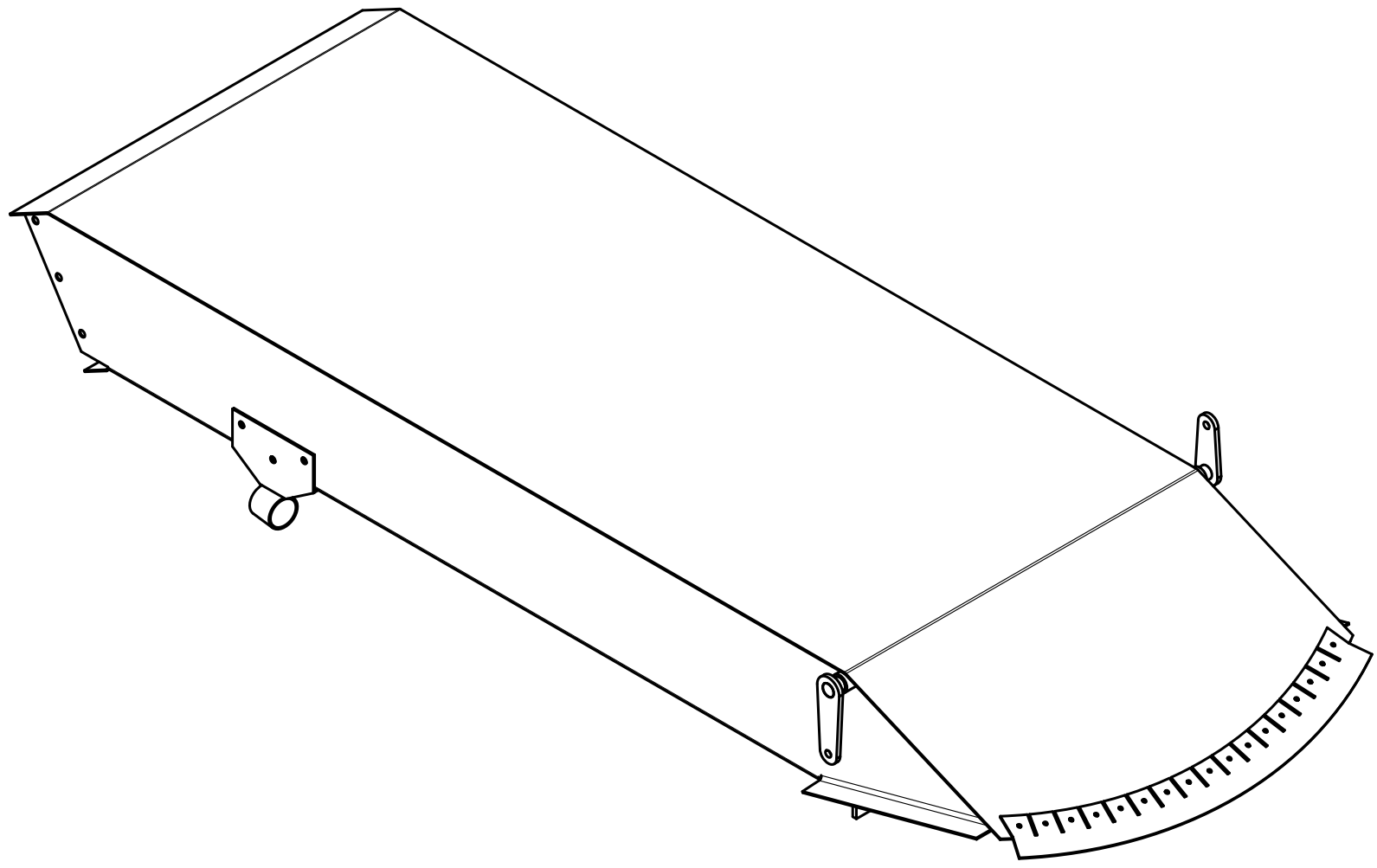
C

B

B

A

A



-26	4	SCREW	MS24693-50
-25	5	NUT	MS20365-832
-24	5	WASHER	AN960-8
-23	24	BOLT	AN3-5A
-22	3	SUPPORT STRIP	18 ga STAINLESS STEEL - T304
-21	8	SUPPORT STRIP	18 ga STAINLESS STEEL - T304
-20	2	BOLT STRIP ASSY	
-19	4	BOLT STRIP ASSY	
-18	17	RIVET	MS20470AD3-4
-17	5	SCREW	MS35206-245
-16	1	FLANGE	20 ga ALUMINUM - 2024 T3
-15	1	FAIRLEAD RING	AYRES PN 40081-00
-14	1	TEFLON FAIRLEAD	AYRES PN 60184-1
-13	1	TUBE	7/8" x .049" SS-T304
-12	1	BRACKET	18 ga STAINLESS STEEL - T304
-11	1	CONTROL ARM BRACKET ASSY	
-10	2	ROD	3/8" SS-T304
-9	2	BUSHING	1/2" x .065 SS-T304
-8	1	ARM RH	11 ga STAINLESS STEEL - T304
-7	1	ARM LH	11 ga STAINLESS STEEL - T304
-6	1	PLATE	11 ga STAINLESS STEEL - T304
-5	1	SHAFT	1/2" x .065 SS-T304
-4	1	DOOR ASSY	
-3	1	TUNNEL TOP	20 ga STAINLESS STEEL - T304
-2	1	TUNNEL BASE	20 ga STAINLESS STEEL - T304
-1	1	AIR INLET EXIT TUNNEL ASSY	
PART #	QTY	DESCRIPTION	MATERIAL

VAZAR INC. 3025 ELDRIDGE AVE BELLINGHAM, WA	DRAWN BY:	JOSHUA HUPP	TOLERANCES UNLESS NOTED OTHERWISE			ASSY:		NEXT ASSY:		PART NO:	20016	QTY:	1	SCALE	1:4
	CHECKED BY:		FRACTIONS:	± 1/16"	ANGLES:	± 30'	AIR INLET EXIT TUNNEL			MATERIAL:		SIZE:	B		
	DATE CREATED:	12/09/2017	DECIMALS:	± 0.10						DESC:	AIR INLET EXIT TUNNEL ASSY	ANSI			
	LAST REVISION:	05/10/2021	FINISH AS PER FS-2576			UNIT:				DEHAVILLAND	MODEL:	DHC-3	SHEET	1 OF 11	
MFG BY	REV:		WELD AS PER AC 43.13-IA STEEL			TITLE									

4

3

2

1

4

3

2

1

D

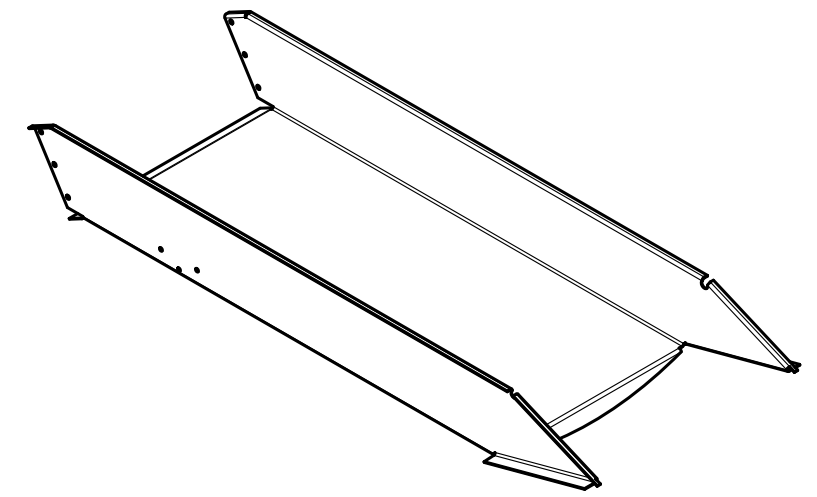
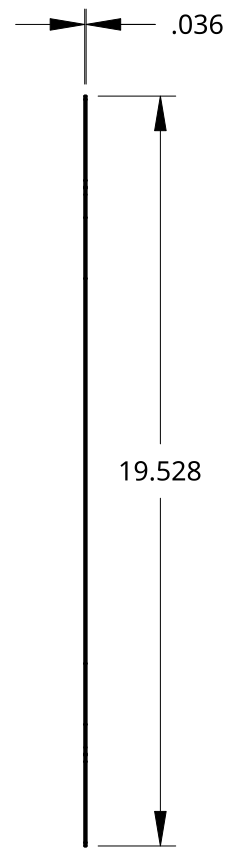
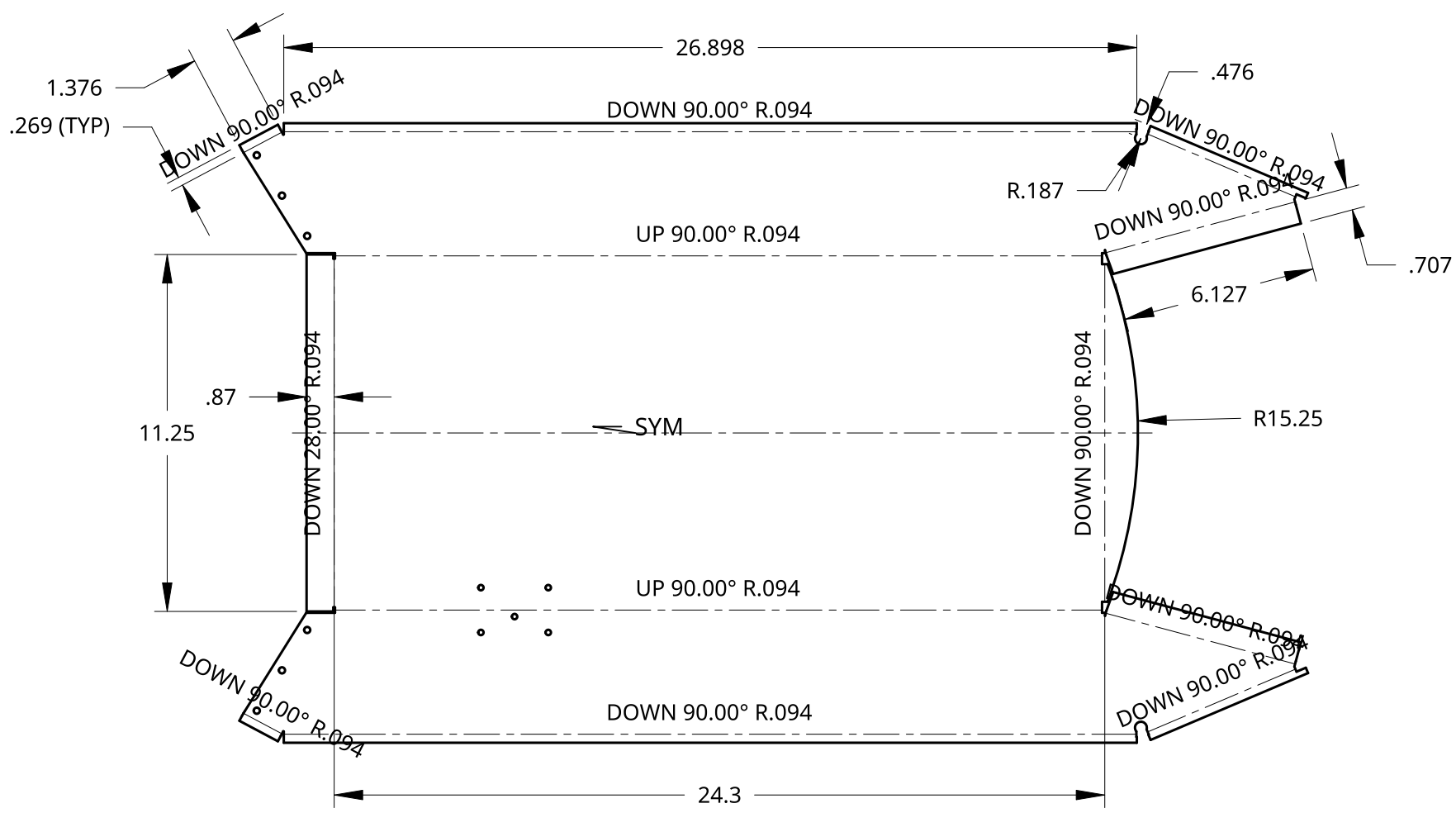
D

C

C

B

B



SCALE 1:8

1. MODEL GENERATED AS A SHEET METAL MODEL.
BEND RELIEFS COMPUTED AUTOMATICALLY.

A

A

VAZAR INC. 3025 ELDRIDGE AVE BELLINGHAM, WA	DRAWN BY:	JOSHUA HUPP	TOLERANCES UNLESS NOTED OTHERWISE			ASSY:	20016	NEXT ASSY:	20010	PART NO:	20016-2	QTY:	1	SCALE	1:5
	CHECKED BY:		FRACTIONS:	± 1/16"	ANGLES:	± 30'	AIR INLET EXIT TUNNEL			MATERIAL:	20 GA		SIZE:	B	
	DATE CREATED:	12/09/2017	DECIMALS:	± 0.10						DESC:	TUNNEL BASE		ANSI		
	LAST REVISION:	05/10/2021	FINISH AS PER FS-2576								UNIT:	DEHAVILLAND	MODEL:	DHC-3	SHEET
MFG BY	REV:		WELD AS PER AC 43.13-IA STEEL			TITLE									

4

3

2

1

4

3

2

1

D

D

C

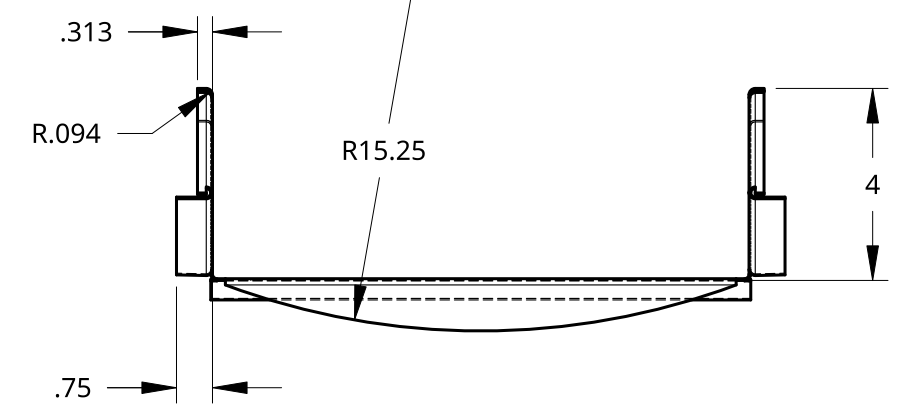
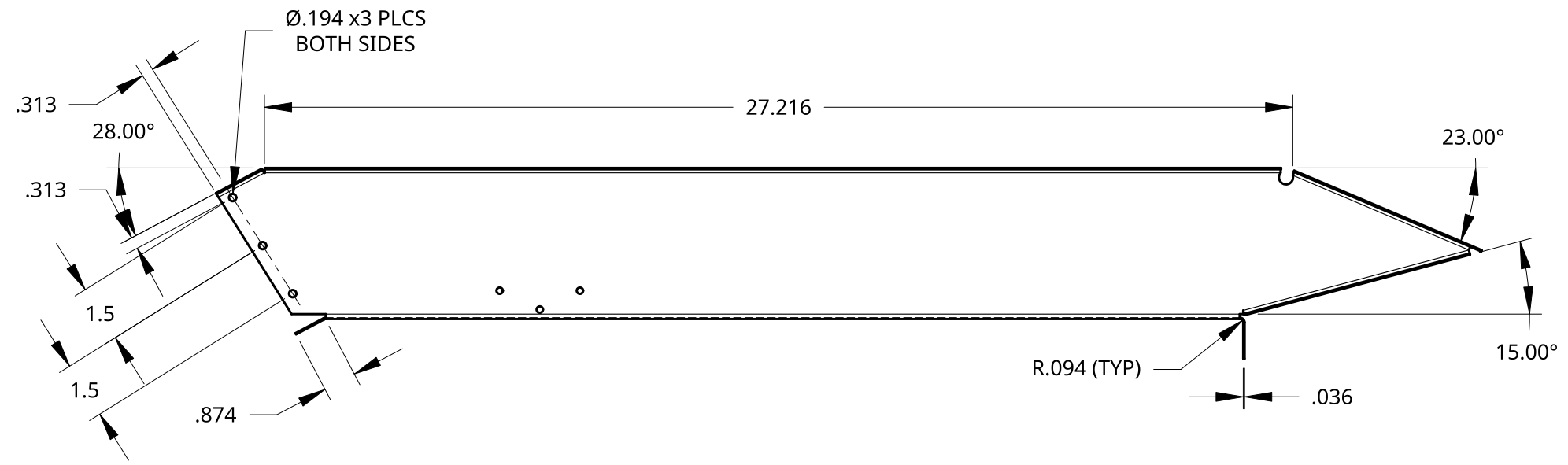
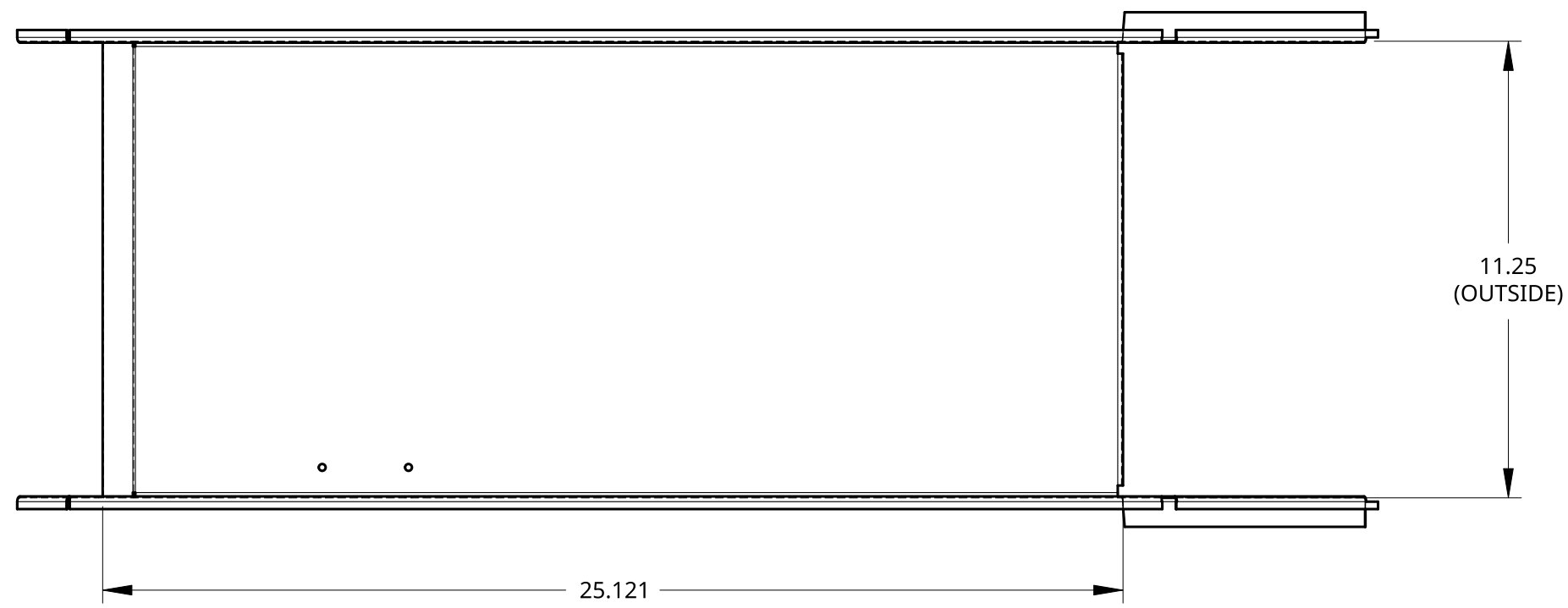
C

B

B

A

A



VAZAR INC. 3025 ELDRIDGE AVE BELLINGHAM, WA	DRAWN BY:	JOSHUA HUPP	TOLERANCES UNLESS NOTED OTHERWISE		ASSY:	20016	NEXT ASSY:	20010	PART NO:	20016-2	QTY:	1	SCALE	1:4
	CHECKED BY:		FRACTIONS:	± 1/16"	ANGLES:	± 30'	AIR INLET EXIT TUNNEL			MATERIAL:	20 ga	SIZE:	B	
	DATE CREATED:	12/09/2017	DECIMALS:	± 0.10		DESC:				TUNNEL BASE	ANSI			
	LAST REVISION:	05/10/2021	FINISH AS PER FS-2576		TITLE			UNIT:	DEHAVILLAND	MODEL:	DHC-3	SHEET	3 OF 11	
MFG BY	REV:	WELD AS PER AC 43.13-IA STEEL												

4

3

2

1

4

3

2

1

D

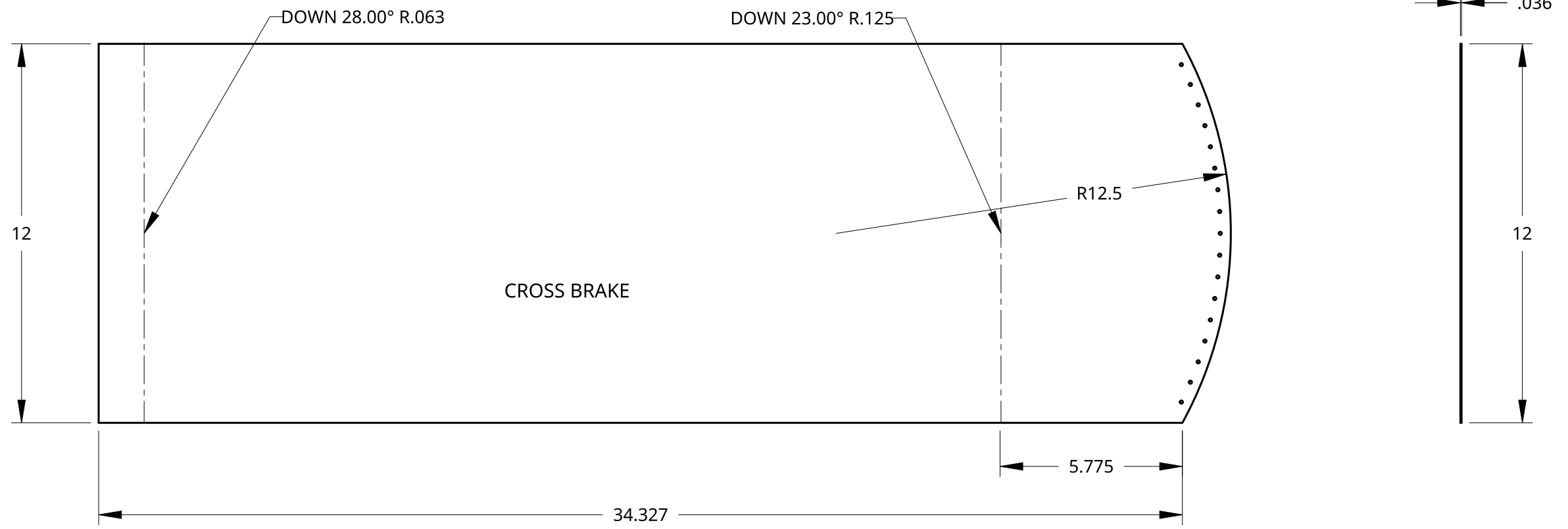
D

C

C

B

B



A

A

VAZAR INC. 3025 ELDRIDGE AVE BELLINGHAM, WA	DRAWN BY:	JOSHUA HUPP	TOLERANCES UNLESS NOTED OTHERWISE			ASSY:	20016	NEXT ASSY:	20010	PART NO:	20016-3	QTY:	1	SCALE	1:4
	CHECKED BY:		FRACTIONS:	± 1/16"	ANGLES:	± 30'	AIR INLET EXIT TUNNEL			MATERIAL:	20 ga				
	DATE CREATED:	12/09/2017	DECIMALS:	± 0.10							STAINLESS STEEL 304	SIZE:	B		
	LAST REVISION:	05/10/2021	FINISH AS PER FS-2576			DESC:				TUNNEL TOP		ANSI			
MFG BY	REV:		WELD AS PER AC 43.13-IA STEEL			TITLE			UNIT:	DEHAVILLAND	MODEL:	DHC-3	SHEET	4 OF 11	

4

3

2

1

4

3

2

1

D

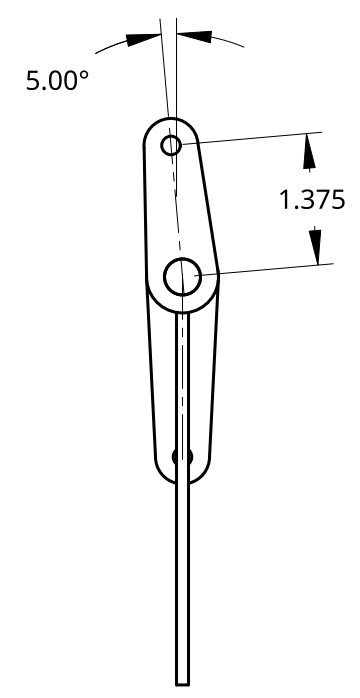
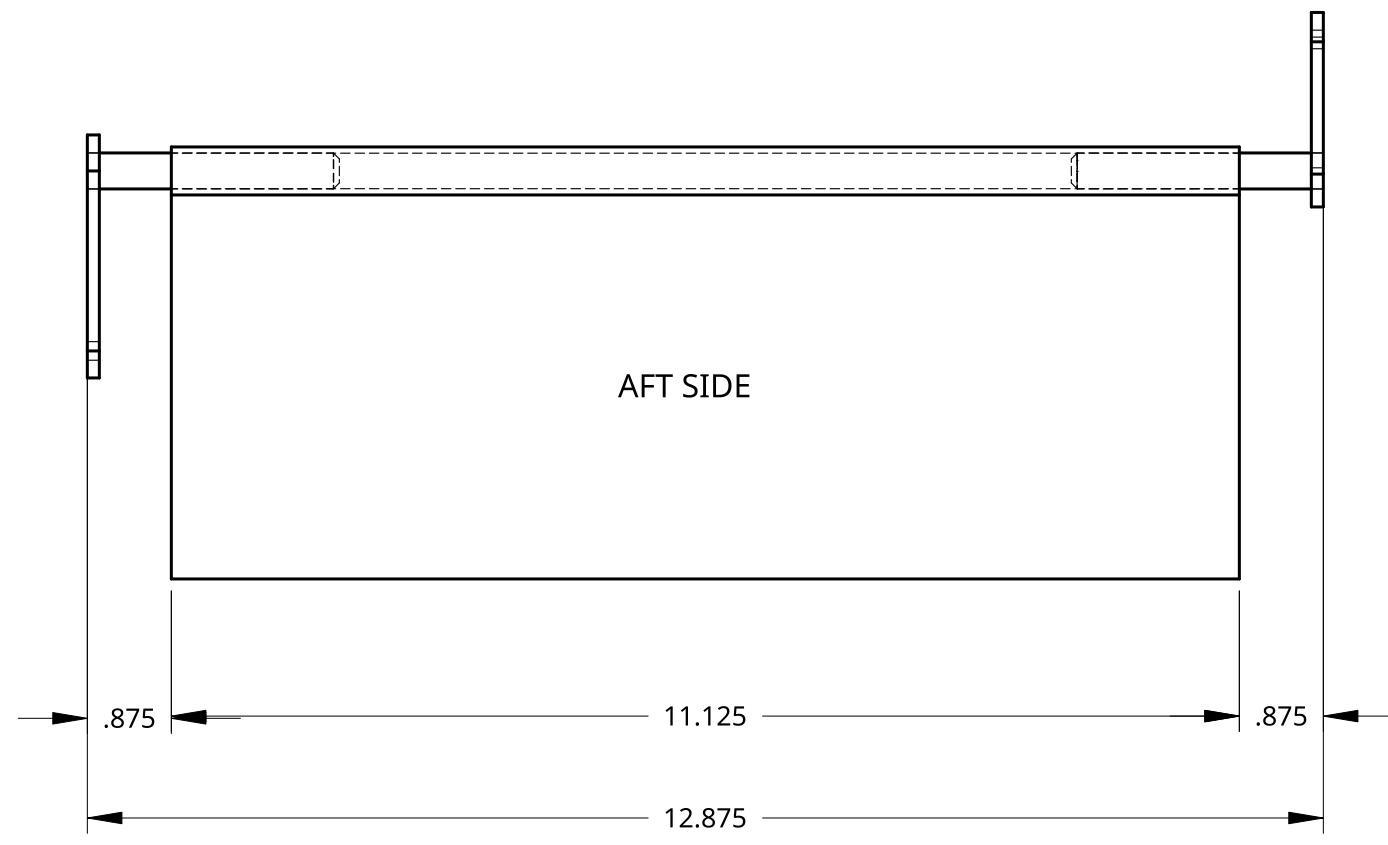
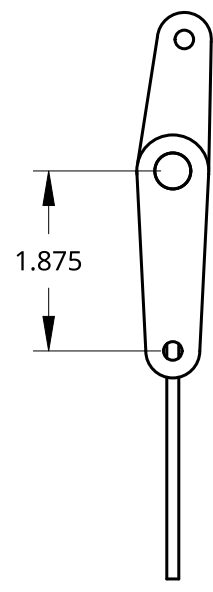
D

C

C

B

B



A

A

VAZAR INC. 3025 ELDRIDGE AVE BELLINGHAM, WA	DRAWN BY:	JOSHUA HUPP	TOLERANCES UNLESS NOTED OTHERWISE			ASSY:	20016	NEXT ASSY:	20010	PART NO:	20016-4	QTY:	1	SCALE	1:2
	CHECKED BY:		FRACTIONS:	± 1/16"	ANGLES:	± 30'	AIR INLET EXIT TUNNEL			MATERIAL:		SIZE:	B		
	DATE CREATED:	12/09/2017	DECIMALS:	± 0.10						DESC:	DOOR ASSY (DE-ICE)	ANSI			
	LAST REVISION:	05/10/2021	FINISH AS PER FS-2576			UNIT:				DEHAVILLAND	MODEL:	DHC-3	SHEET	5 OF 11	
MFG BY	REV:		WELD AS PER AC 43.13-IA STEEL			TITLE									

4

3

2

1

4

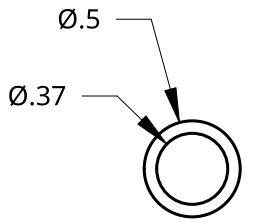
3

2

1

D

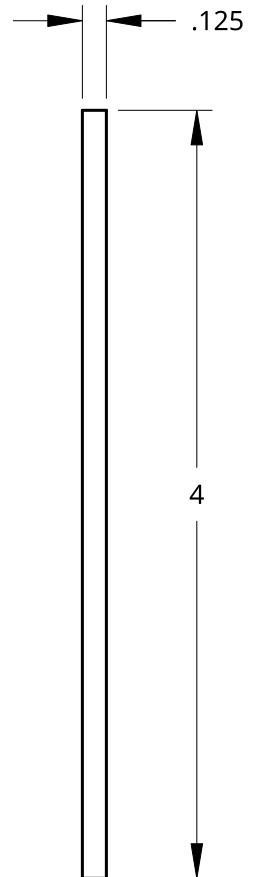
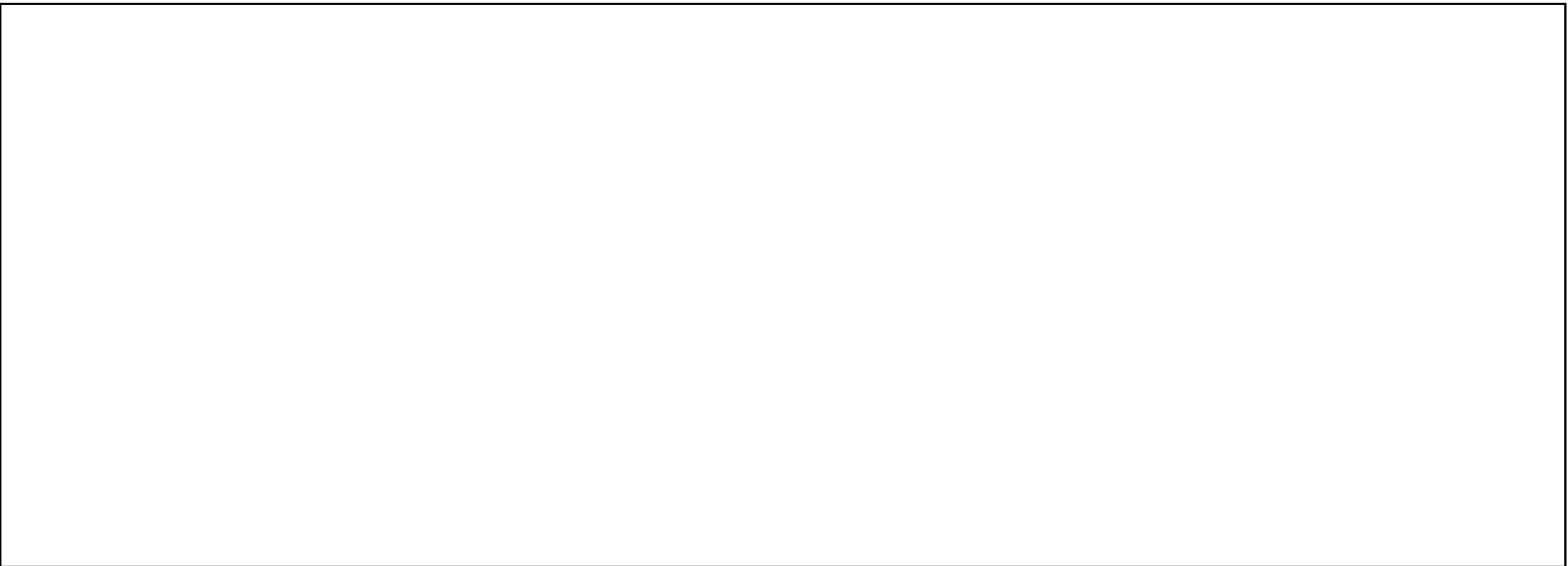
D



20016-5

C

C



11.125

20016-6

B

B

A

A

VAZAR INC. 3025 ELDRIDGE AVE BELLINGHAM, WA	DRAWN BY: JOSHUA HUPP	TOLERANCES UNLESS NOTED OTHERWISE		ASSY: 20016	NEXT ASSY: 20010	PART NO: 20016-5 & 6	QTY: 1	SCALE	1:1	
	CHECKED BY:	FRACTIONS: ± 1/16"	ANGLES: ± 30'	<i>AIR INLET EXIT TUNNEL</i>		MATERIAL:	STAINLESS STEEL - T304	SIZE:	B	
	DATE CREATED: 12/09/2017	DECIMALS: ± 0.10				DESC:	SHAFT	ANSI		
	LAST REVISION: 05/10/2021	FINISH AS PER FS-2576				UNIT:	DEHAVILLAND	MODEL: DHC-3	SHEET	6 OF 11
MFG BY	REV:	WELD AS PER AC 43.13-IA STEEL		TITLE		UNIT:	DEHAVILLAND	MODEL: DHC-3	SHEET	6 OF 11

4

3

2

1

4

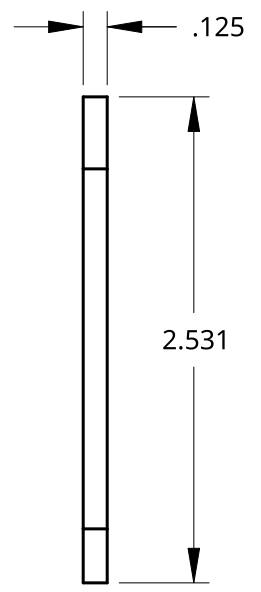
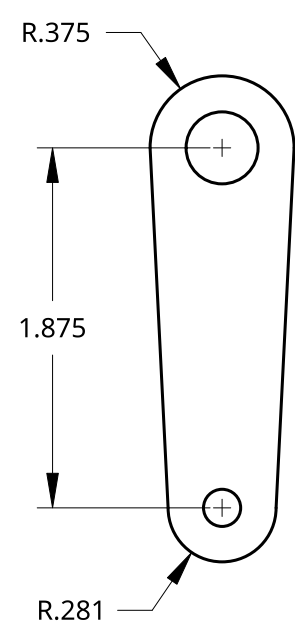
3

2

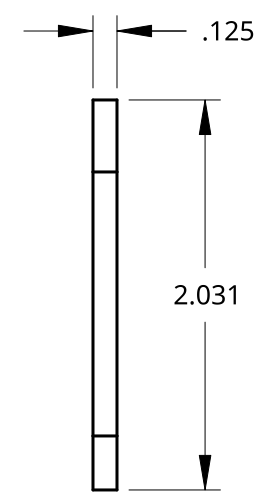
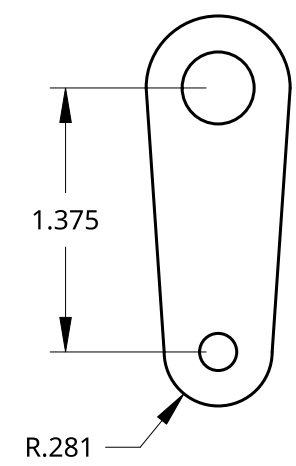
1

D

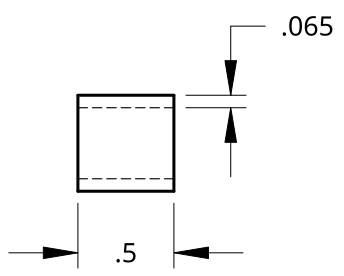
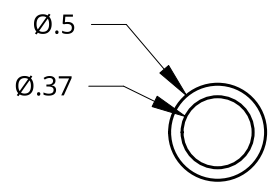
D



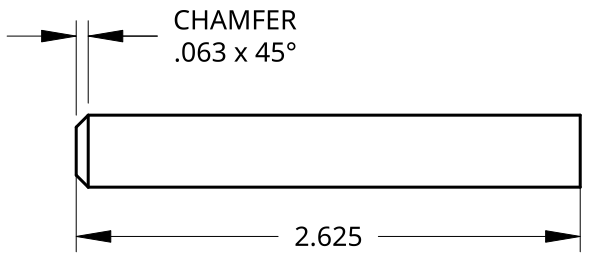
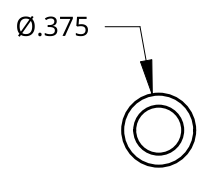
20016-7
ARM LH



20016-8
ARM RH



20016-9
BUSHING (2 REQ)



20016-10
ROD (2 REQ)

B

B

A

A

VAZAR INC. 3025 ELDRIDGE AVE BELLINGHAM, WA	DRAWN BY:	JOSHUA HUPP	TOLERANCES UNLESS NOTED OTHERWISE			ASSY:	20016	NEXT ASSY:	20010	PART NO:	20016-7-10	QTY:		SCALE	1:1
	CHECKED BY:		FRACTIONS:	± 1/16"	ANGLES:	± 30'	AIR INLET EXIT TUNNEL			MATERIAL:			SIZE:	B	
	DATE CREATED:	12/09/2017	DECIMALS:	± 0.10	FINISH AS PER FS-2576					DESC:	DOOR ASSY PARTS		ANSI		
	LAST REVISION:	05/10/2021	WELD AS PER AC 43.13-IA STEEL			TITLE			UNIT:	DEHAVILLAND	MODEL:	DHC-3	SHEET	7 OF 11	
MFG BY	REV:														

4

3

2

1

4

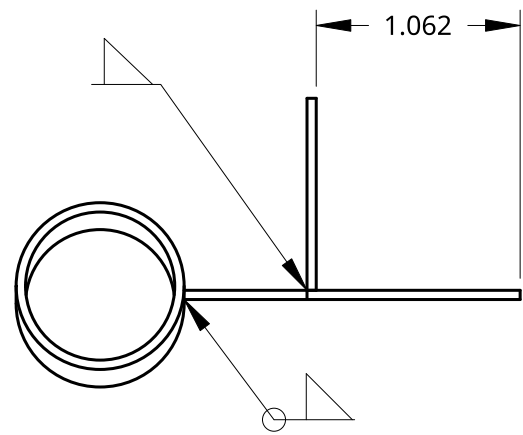
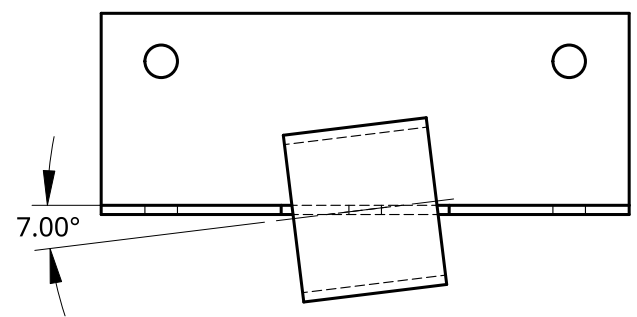
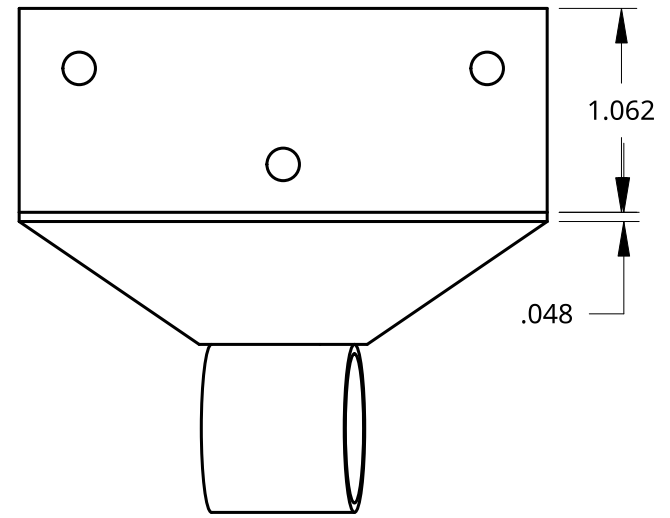
3

2

1

D

D



C

C

B

B

A

A

VAZAR INC. 3025 ELDRIDGE AVE BELLINGHAM, WA	DRAWN BY:	JOSHUA HUPP	TOLERANCES UNLESS NOTED OTHERWISE			ASSY:	20016	NEXT ASSY:	20010	PART NO:	20016-11	QTY:	1	SCALE	1:1
	CHECKED BY:		FRACTIONS:	± 1/16"	ANGLES:	± 30'	AIR INLET EXIT TUNNEL			MATERIAL:		SIZE:	B		
	DATE CREATED:	12/09/2017	DECIMALS:	± 0.10						DESC:	CONTROL ARM BRKT ASSY	ANSI			
	LAST REVISION:	05/10/2021	FINISH AS PER FS-2576								UNIT:	DEHAVILLAND	MODEL:	DHC-3	SHEET
MFG BY	REV:		WELD AS PER AC 43.13-IA STEEL			TITLE									

4

3

2

1

4

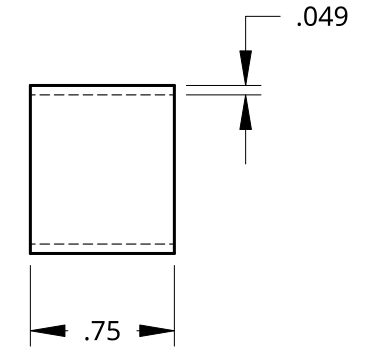
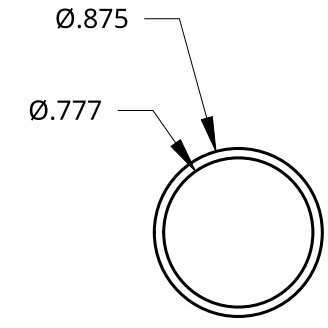
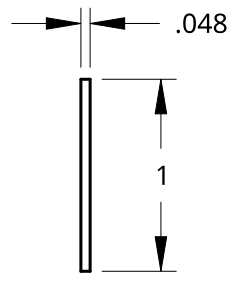
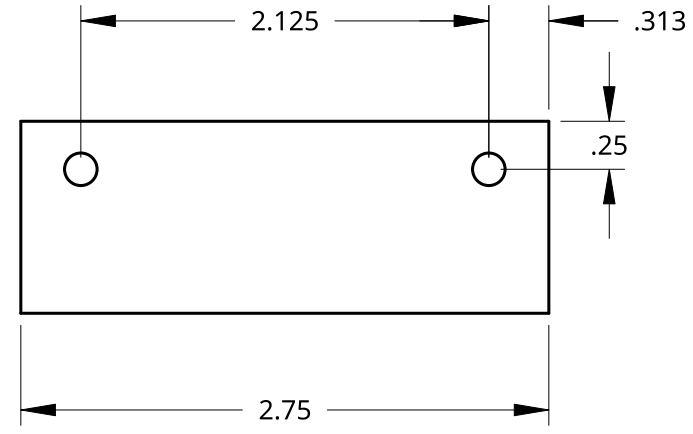
3

2

1

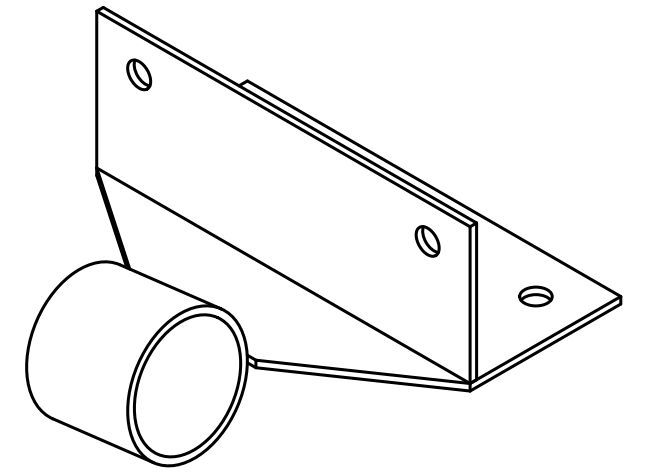
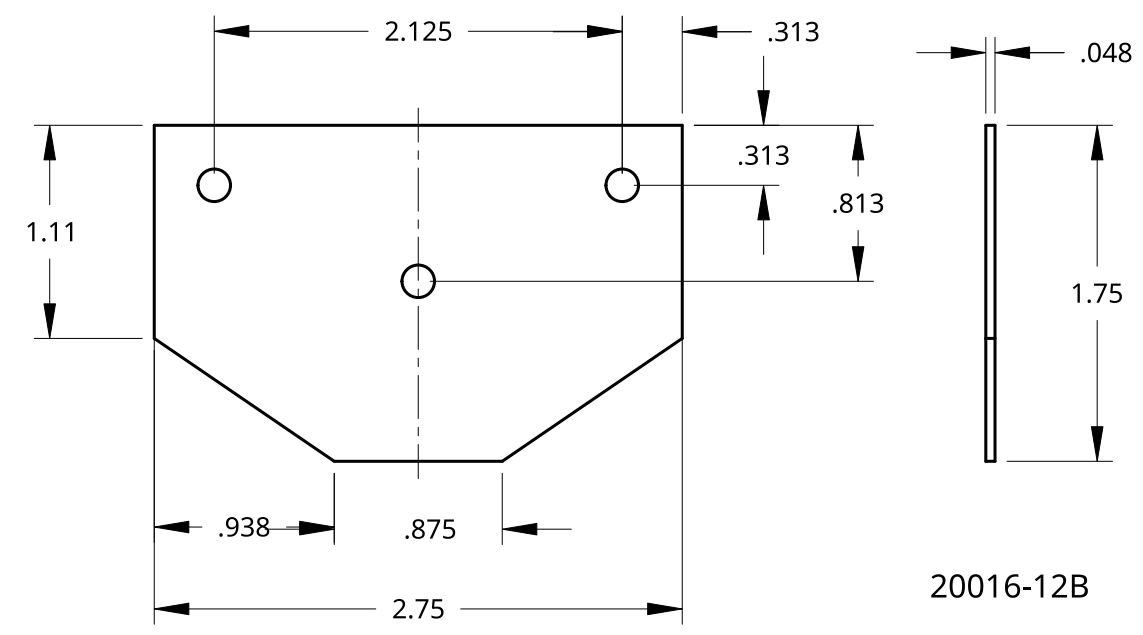
D

D



C

C



B

B

A

A

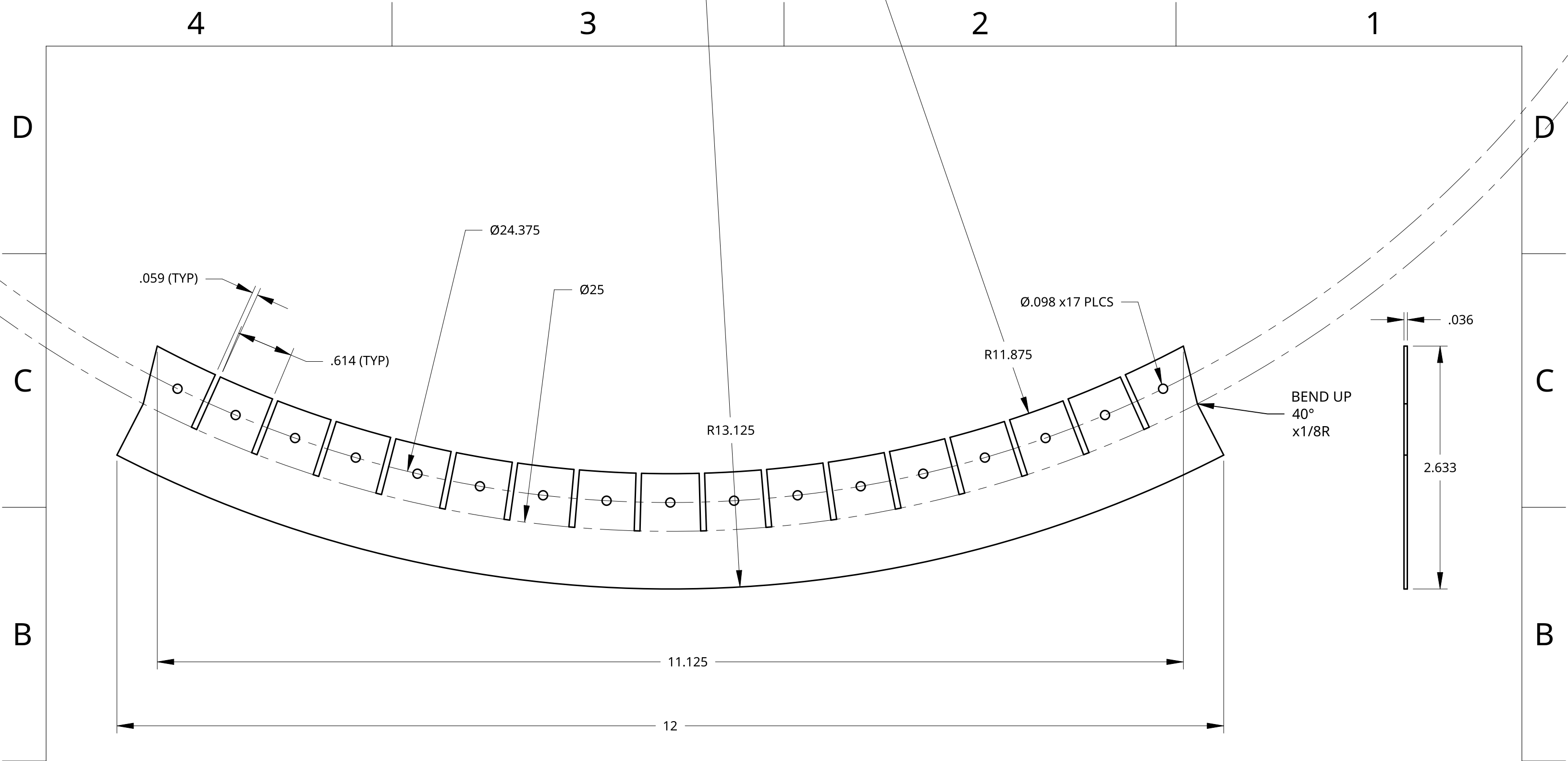
VAZAR INC. 3025 ELDRIDGE AVE BELLINGHAM, WA	DRAWN BY:	JOSHUA HUPP	TOLERANCES UNLESS NOTED OTHERWISE			ASSY:	20016	NEXT ASSY:	20010	PART NO:	20016-12&13	QTY:	1	SCALE	1:1
	CHECKED BY:		FRACTIONS:	± 1/16"	ANGLES:	± 30'	AIR INLET EXIT TUNNEL				MATERIAL:	18 ga	SIZE:	B	
	DATE CREATED:	12/09/2017	DECIMALS:	± 0.10							DESC:	BRACKET & TUBE	ANSI		
	LAST REVISION:	05/10/2021	FINISH AS PER FS-2576									UNIT:	DEHAVILLAND	MODEL:	DHC-3
MFG BY	REV:		WELD AS PER AC 43.13-IA STEEL			TITLE									

4

3

2

1



A	VAZAR INC. 3025 ELDRIDGE AVE BELLINGHAM, WA	DRAWN BY: JOSHUA HUPP	TOLERANCES UNLESS NOTED OTHERWISE			ASSY: 20016	NEXT ASSY: 20010	PART NO: 20016-16	QTY: 1	SCALE	1:1	A
		CHECKED BY:	FRACTIONS: ± 1/16"	ANGLES: ± 30'		AIR INLET EXIT TUNNEL			MATERIAL: 20 ga	SIZE:	B	
		DATE CREATED: 12/09/2017	DECIMALS: ± 0.10						DESC: FLANGE	ANSI		
		LAST REVISION: 05/10/2021	FINISH AS PER FS-2576						UNIT: DEHAVILLAND	MODEL: DHC-3	SHEET	
MFG BY	REV:	WELD AS PER AC 43.13-IA STEEL			TITLE							

4

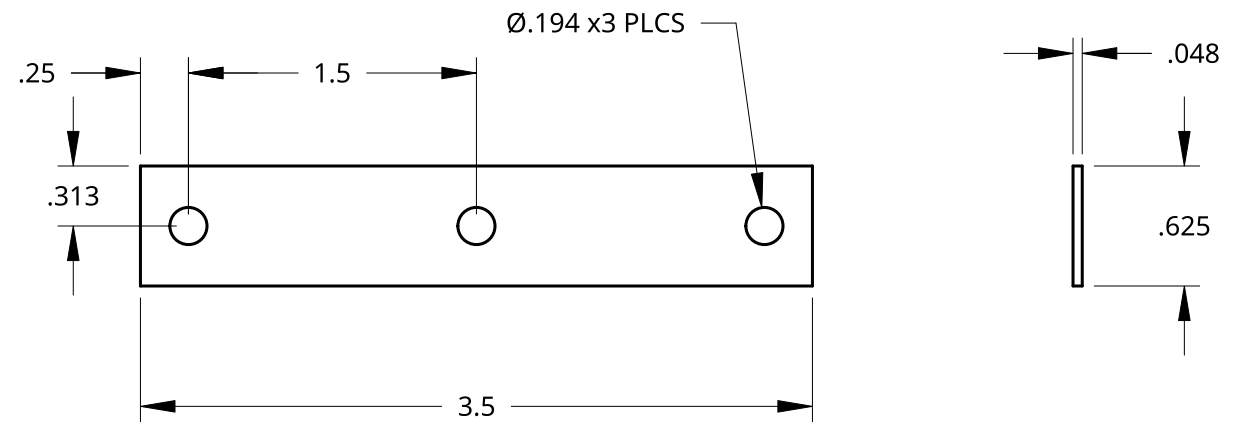
3

2

1

D

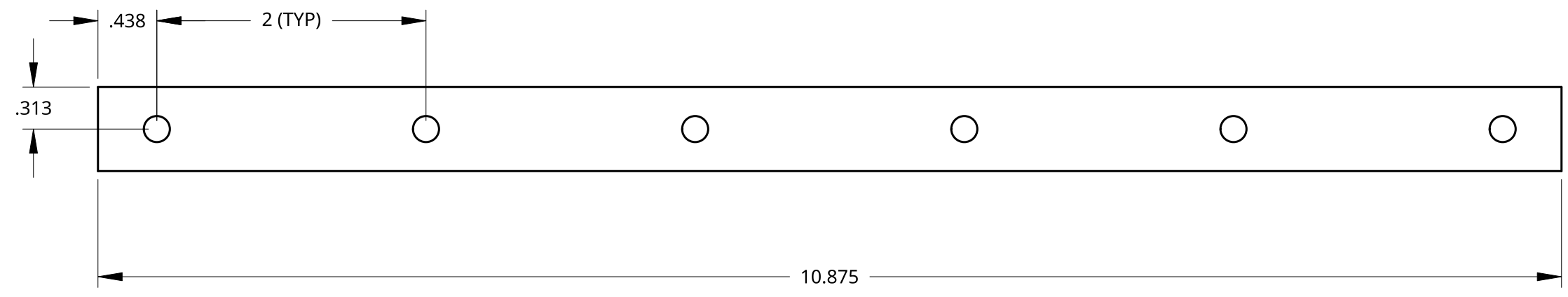
D



20016-21
8 NEEDED

C

C



20016-22
3 NEEDED

B

B

A

A

VAZAR INC. 3025 ELDRIDGE AVE BELLINGHAM, WA	DRAWN BY:	JOSHUA HUPP	TOLERANCES UNLESS NOTED OTHERWISE			ASSY:	20016	NEXT ASSY:	20010	PART NO:	20016-21&22	QTY:		SCALE	1:1
	CHECKED BY:		FRACTIONS:	± 1/16"	ANGLES:	± 30'	AIR INLET EXIT TUNNEL			MATERIAL:	18 ga		SIZE:	B	
	DATE CREATED:	12/09/2017	DECIMALS:	± 0.10						DESC:	SUPPORT STRIP	ANSI			
	LAST REVISION:	05/10/2021	FINISH AS PER FS-2576												
MFG BY	REV:		WELD AS PER AC 43.13-IA STEEL			TITLE			UNIT:	DEHAVILLAND	MODEL:	DHC-3	SHEET	11 OF 11	

4

3

2

1