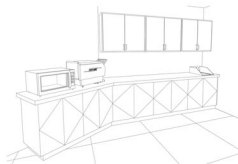
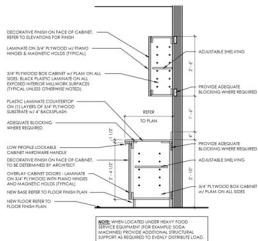


1 ENLARGED PLAN - MY ZONE
1/4" = 1'-0"



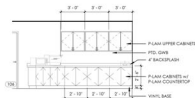
2 FIRST FLOOR - MY ZONE



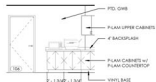
3 MY ZONE SECTION
3/4" = 1'-0"

MILLWORK FINISHES

| | |
|--------------------------|------------------------------------|
| C11 COUNTERTOP | COUNTERTOPS AS INDICATED |
| C12 COUNTER | WELCHMET APPLY AS NOTED |
| C13 COUNTER | WELCHMET APPLY AS NOTED |
| C14 COUNTER | WELCHMET APPLY AS NOTED |
| C15 COUNTER | WELCHMET APPLY AS NOTED |
| C16 COUNTER | WELCHMET APPLY AS NOTED |
| C17 COUNTER | WELCHMET APPLY AS NOTED |
| C18 COUNTER | WELCHMET APPLY AS NOTED |
| C19 COUNTER | WELCHMET APPLY AS NOTED |
| C20 COUNTER | WELCHMET APPLY AS NOTED |
| C21 COUNTER | WELCHMET APPLY AS NOTED |
| C22 COUNTER | WELCHMET APPLY AS NOTED |
| C23 COUNTER | WELCHMET APPLY AS NOTED |
| C24 COUNTER | WELCHMET APPLY AS NOTED |
| C25 COUNTER | WELCHMET APPLY AS NOTED |
| C26 COUNTER | WELCHMET APPLY AS NOTED |
| C27 COUNTER | WELCHMET APPLY AS NOTED |
| C28 COUNTER | WELCHMET APPLY AS NOTED |
| C29 COUNTER | WELCHMET APPLY AS NOTED |
| C30 COUNTER | WELCHMET APPLY AS NOTED |
| C31 COUNTER | WELCHMET APPLY AS NOTED |
| C32 COUNTER | WELCHMET APPLY AS NOTED |
| C33 COUNTER | WELCHMET APPLY AS NOTED |
| C34 COUNTER | WELCHMET APPLY AS NOTED |
| C35 COUNTER | WELCHMET APPLY AS NOTED |
| C36 COUNTER | WELCHMET APPLY AS NOTED |
| C37 COUNTER | WELCHMET APPLY AS NOTED |
| C38 COUNTER | WELCHMET APPLY AS NOTED |
| C39 COUNTER | WELCHMET APPLY AS NOTED |
| C40 COUNTER | WELCHMET APPLY AS NOTED |
| C41 COUNTER | WELCHMET APPLY AS NOTED |
| C42 COUNTER | WELCHMET APPLY AS NOTED |
| C43 COUNTER | WELCHMET APPLY AS NOTED |
| C44 COUNTER | WELCHMET APPLY AS NOTED |
| C45 COUNTER | WELCHMET APPLY AS NOTED |
| C46 COUNTER | WELCHMET APPLY AS NOTED |
| C47 COUNTER | WELCHMET APPLY AS NOTED |
| C48 COUNTER | WELCHMET APPLY AS NOTED |
| C49 COUNTER | WELCHMET APPLY AS NOTED |
| C50 COUNTER | WELCHMET APPLY AS NOTED |
| C51 COUNTER | WELCHMET APPLY AS NOTED |
| C52 COUNTER | WELCHMET APPLY AS NOTED |
| C53 COUNTER | WELCHMET APPLY AS NOTED |
| C54 COUNTER | WELCHMET APPLY AS NOTED |
| C55 COUNTER | WELCHMET APPLY AS NOTED |
| C56 COUNTER | WELCHMET APPLY AS NOTED |
| C57 COUNTER | WELCHMET APPLY AS NOTED |
| C58 COUNTER | WELCHMET APPLY AS NOTED |
| C59 COUNTER | WELCHMET APPLY AS NOTED |
| C60 COUNTER | WELCHMET APPLY AS NOTED |
| C61 COUNTER | WELCHMET APPLY AS NOTED |
| C62 COUNTER | WELCHMET APPLY AS NOTED |
| C63 COUNTER | WELCHMET APPLY AS NOTED |
| C64 COUNTER | WELCHMET APPLY AS NOTED |
| C65 COUNTER | WELCHMET APPLY AS NOTED |
| C66 COUNTER | WELCHMET APPLY AS NOTED |
| C67 COUNTER | WELCHMET APPLY AS NOTED |
| C68 COUNTER | WELCHMET APPLY AS NOTED |
| C69 COUNTER | WELCHMET APPLY AS NOTED |
| C70 COUNTER | WELCHMET APPLY AS NOTED |
| C71 COUNTER | WELCHMET APPLY AS NOTED |
| C72 COUNTER | WELCHMET APPLY AS NOTED |
| C73 COUNTER | WELCHMET APPLY AS NOTED |
| C74 COUNTER | WELCHMET APPLY AS NOTED |
| C75 COUNTER | WELCHMET APPLY AS NOTED |
| C76 COUNTER | WELCHMET APPLY AS NOTED |
| C77 COUNTER | WELCHMET APPLY AS NOTED |
| C78 COUNTER | WELCHMET APPLY AS NOTED |
| C79 COUNTER | WELCHMET APPLY AS NOTED |
| C80 COUNTER | WELCHMET APPLY AS NOTED |
| C81 COUNTER | WELCHMET APPLY AS NOTED |
| C82 COUNTER | WELCHMET APPLY AS NOTED |
| C83 COUNTER | WELCHMET APPLY AS NOTED |
| C84 COUNTER | WELCHMET APPLY AS NOTED |
| C85 COUNTER | WELCHMET APPLY AS NOTED |
| C86 COUNTER | WELCHMET APPLY AS NOTED |
| C87 COUNTER | WELCHMET APPLY AS NOTED |
| C88 COUNTER | WELCHMET APPLY AS NOTED |
| C89 COUNTER | WELCHMET APPLY AS NOTED |
| C90 COUNTER | WELCHMET APPLY AS NOTED |
| C91 COUNTER | WELCHMET APPLY AS NOTED |
| C92 COUNTER | WELCHMET APPLY AS NOTED |
| C93 COUNTER | WELCHMET APPLY AS NOTED |
| C94 COUNTER | WELCHMET APPLY AS NOTED |
| C95 COUNTER | WELCHMET APPLY AS NOTED |
| C96 COUNTER | WELCHMET APPLY AS NOTED |
| C97 COUNTER | WELCHMET APPLY AS NOTED |
| C98 COUNTER | WELCHMET APPLY AS NOTED |
| C99 COUNTER | WELCHMET APPLY AS NOTED |
| C100 COUNTER | WELCHMET APPLY AS NOTED |



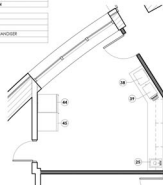
4 MY ZONE 1
1/4" = 1'-0"



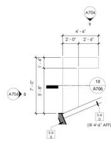
5 MY ZONE 2
1/4" = 1'-0"

EQUIPMENT SCHEDULE MY ZONE

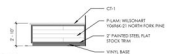
| TYPE MARK | DESCRIPTION |
|-----------|---------------------------|
| SH | STOVE/GRILL |
| SD | SINK/DRAIN |
| SE | ELECTRIC RANGE |
| SE | ELECTRIC COFFEE/TEA MAKER |
| SE | ELECTRIC TOASTER |
| SE | ELECTRIC PRESSURE WASHER |
| SE | REFRIGERATOR |
| SE | DISPOSER |



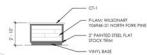
6 ENLARGED EQUIPMENT PLAN - MY ZONE
1/4" = 1'-0"



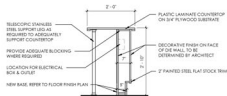
7 ENLARGED PLAN - HOST
1/4" = 1'-0"



8 HOST 1
1/4" = 1'-0"



9 HOST 2
1/4" = 1'-0"



10 HOST SECTION
3/4" = 1'-0"