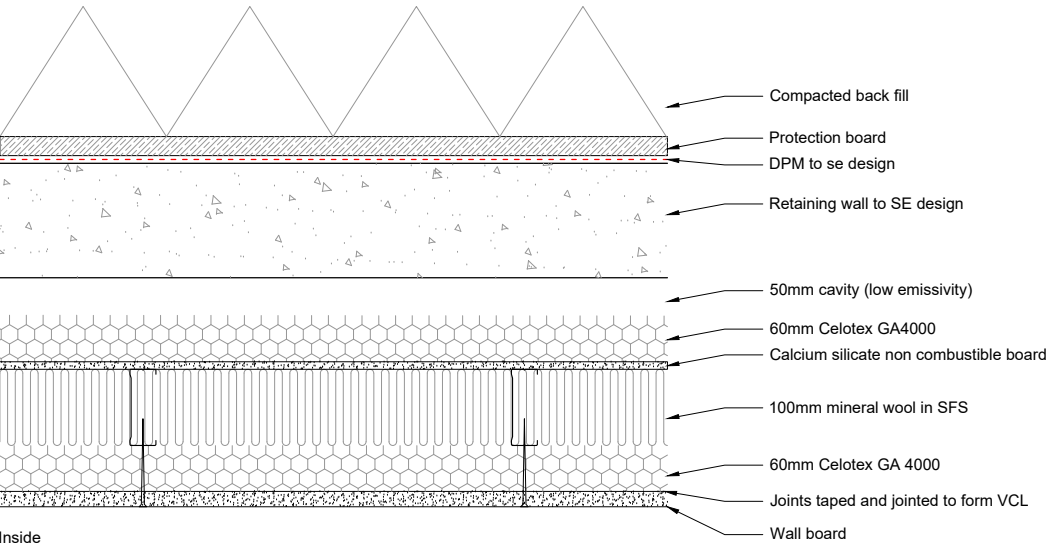


Wall Type F

Semi basement - TO BE READ IN CONJUNCTION WITH DRAWING 702. TO BE REVISED ONCE SE HAS CONFIRMED UPSTAND.

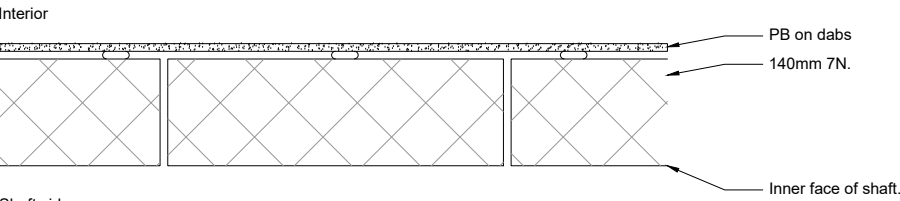


Inside

NOTES:
To achieve 0.12 U value.
Achieves 0.12 U value as per Celotex ref T1093052-HM

Wall Type G

Lift shaft (Internal)

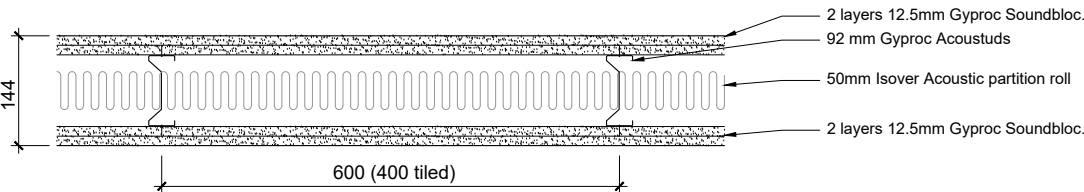


Shaft side

NOTES:
To achieve 1 hour fire.
Achieves 4 hours fire.

Wall Type H

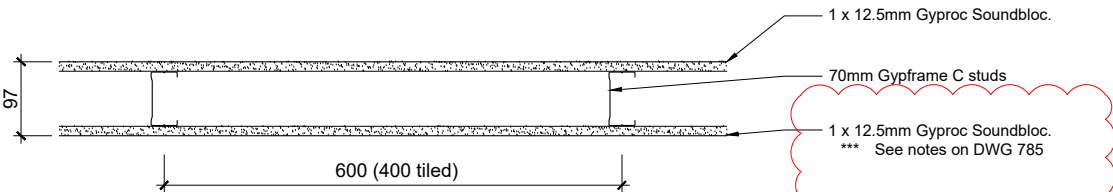
Compartment - Acoustic & Fire
(BG Ref A206A291)



Notes:
Achieves 60 minute fire rating.
Achieves sound reduction:
58 (53) Any finish. 59 (53) Skim finish.
59dB Required.
18mm Head deflection detail required.
See general note *** re MR boards on DWG 785

Wall Type I

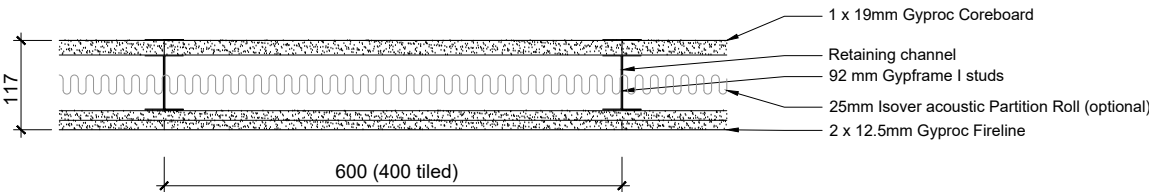
Cupboards (BG Ref A206164)



Notes:
Achieves 30 minute fire rating.
Achieves 40dB sound reduction.

Wall Type J

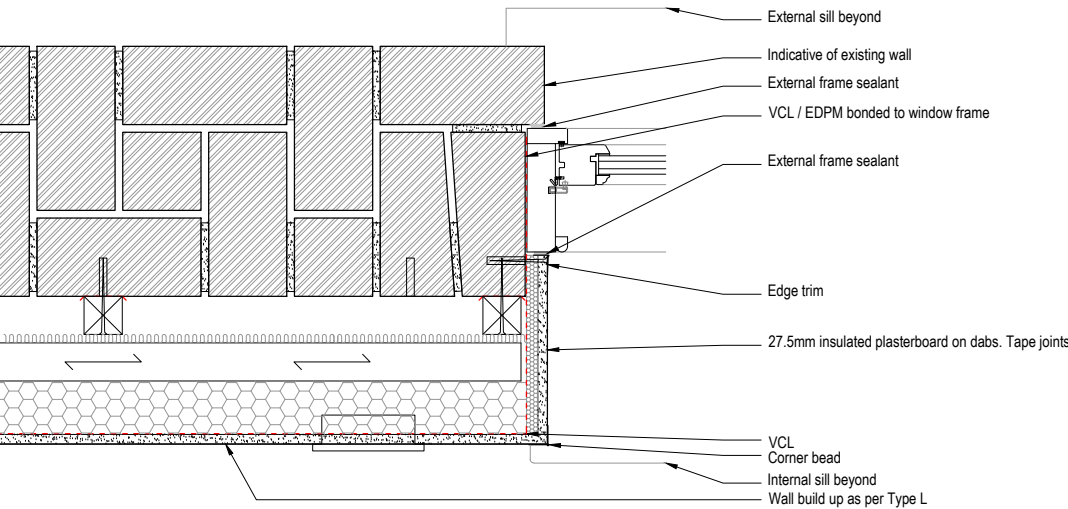
Shaft Wall
(BG Ref A306005/014)



Notes:
Achieves 60 minute fire rating.
Achieves 45dB sound reduction (47 with 25mm Isover Acoustic Roll).

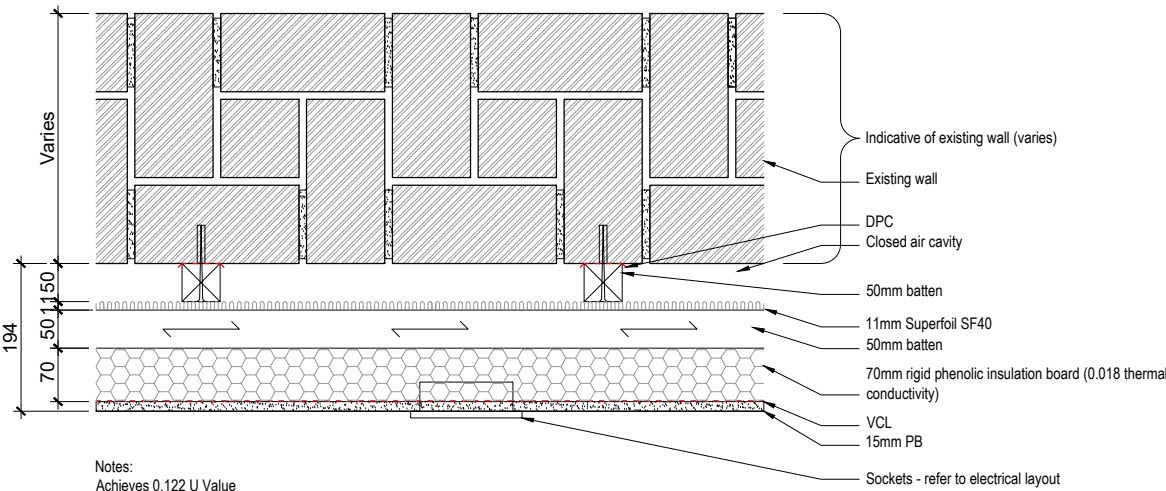
Wall Type K

(Window reveal board)



Wall Type L

(Lining to existing wall)



Notes:
Achieves 0.122 U Value

NOTE - Responsibility is not accepted for errors made by others in scaling from this drawing. All construction information should be taken from figured dimensions only

TENDER ISSUE

REVISIONS
Rev - (17.01.20) Initial issue (SH)
Rev A (18.03.20) Notes revised (SH)

kdpa

Basepoint Business Centre, Little High Street,
Shoreham by Sea, West Sussex BN43 5EG
+44 (0)1273 467518 www.kdpaine.co.uk

CLIENT	JD WETHERSPOON PLC		
PROJECT	PUB NO: 732 I THE GRAPE & GRAIN CRYSTAL PALACE		
DRAWING	WALL TYPES 02		
SCALE	A1/1:5	DATE	DEC 2019
PROJECT No	706B	DRAWING No	T-786
		DRAWN	SH
		REVISION	A