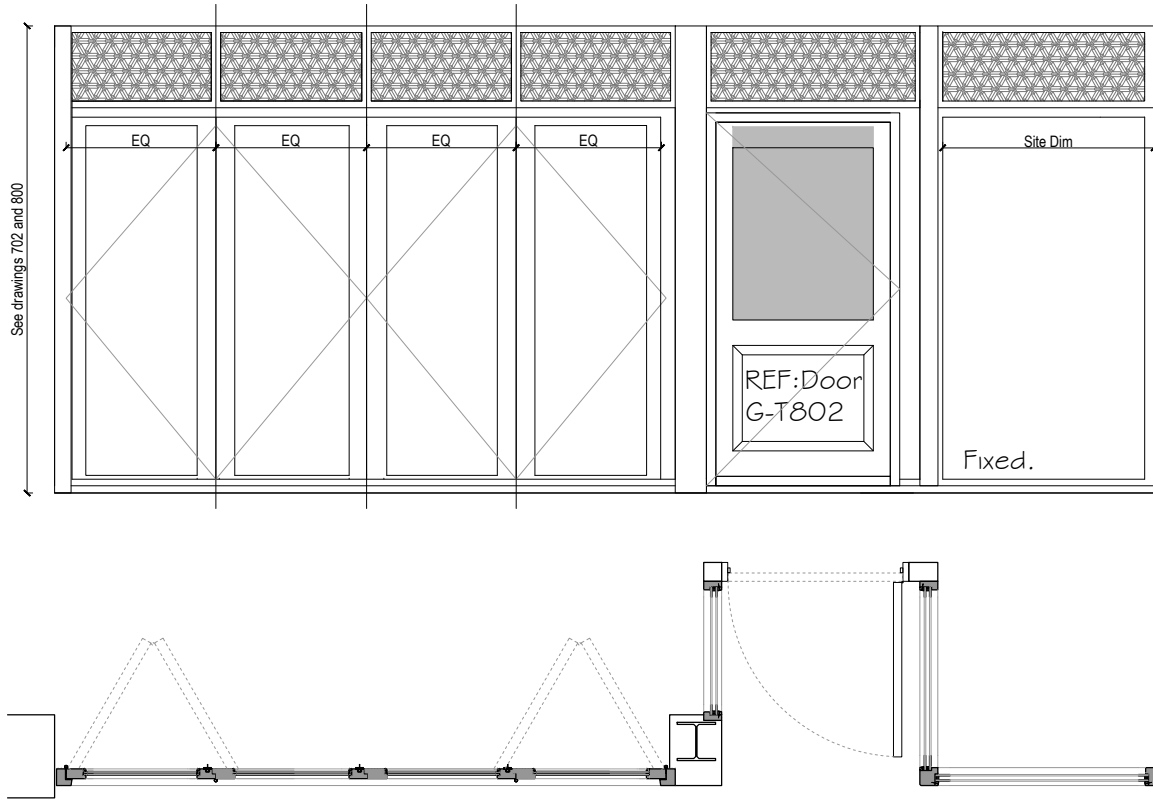


WINDOW TYPE I
Timber shopfront windows. With fan light / louvre grille over laid decorative grill, all double glazed, grill to be approved by architect. RAL colour 5004 (Black Blue) SAFETY GLASS TO BS6206 CLASS A. WINDOW TO ACHIEVE U- VALUE 1.2



WINDOW TYPE G
Timber shop front doors with 4 Bi-fold doors with fan light / grille above with over laid decorative grill, all double glazed, grill to be approved by architect. RAL colour 5004 (Black Blue) SAFETY GLASS TO BS6206 CLASS A. Mafesation to be approved by Architect WINDOW TO ACHIEVE U- VALUE 1.2

WINDOW TYPE H
Timber shop front, window fan light above with over laid decorative grill, grill to be approved by architect. Manifestation to be approved by Architect RAL colour 5004 (Black Blue) SAFETY GLASS TO BS6206 CLASS A. WINDOW TO ACHIEVE U- VALUE 1.2

NOTE - Responsibility is not accepted for errors made by others in scaling from this drawing. All construction information should be taken from figured dimensions only

TENDER ISSUE
Notes:
-For levels refer to drawing 800 and 803
-See also window location drawing 810
-All Ironmongery to Part Q Pas 24
-Specialist joiner to comment

REVISIONS
Rev / (06.06.19) Initial Issue (ND)
Rev A (28.01.20) Main Contractor comments incorporated. (SH)
REV B (18.03.20) New SE scheme incorporated (SH)

kdpa

Basepoint Business Centre, Little High Street,
Shoreham by Sea, West Sussex BN43 5EG
+44 (0)1273 467518 www.kdpaine.co.uk

CLIENT	JD WETHERSPOON PLC		
PROJECT	PUB NO: 7321 THE GRAPE & GRAIN CRYSTAL PALACE		
DRAWING	PROPOSED WINDOW TYPES 2 OF 5		
SCALE	DATE	DRAWN	
A1/1:20	MAR 2019	ND	
PROJECT No	DRAWING No	REVISION	
7068	803-2	B	