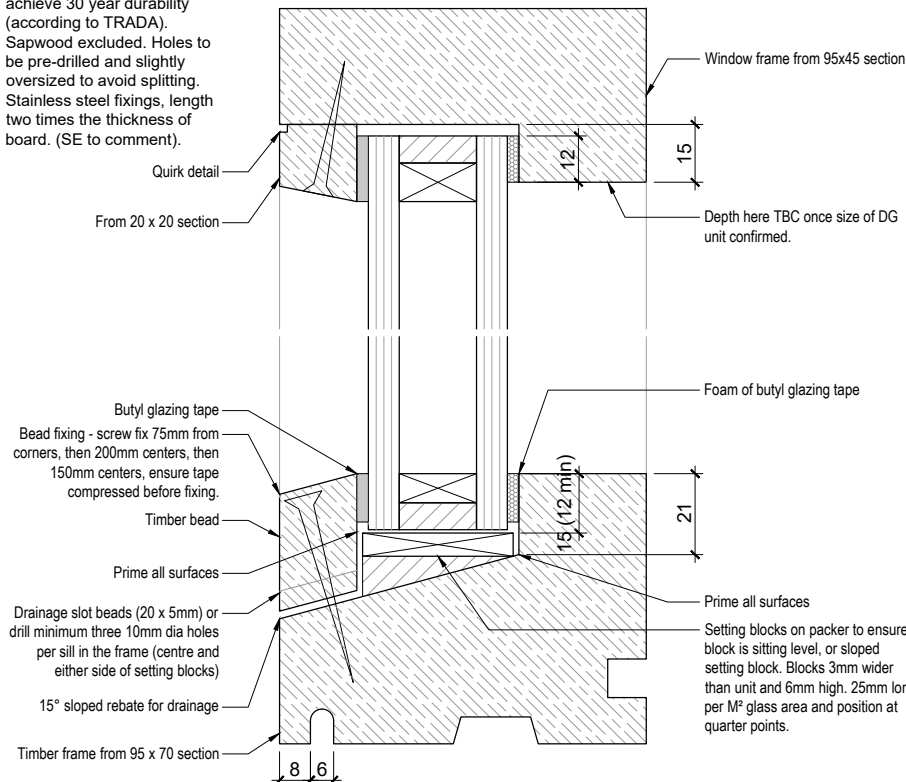


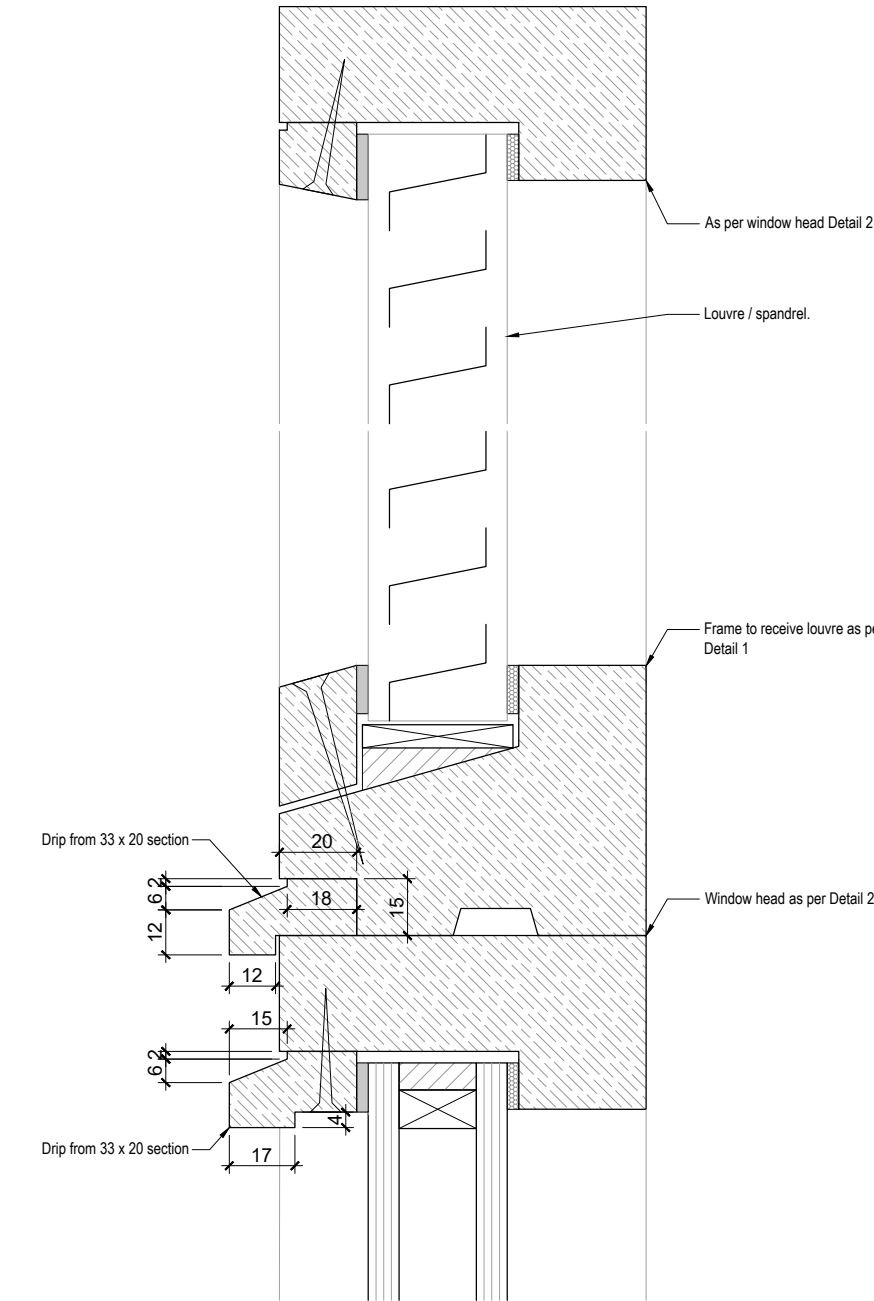
5 Detail, Shopfront Type Windows
811 Scale 1:1 Transom

Notes:
-Specialist joiner to comment.
-All timber to be FSC & non rainforrest.
-Timber to be FSC Siberian Larch, which achieves durability Class 3 to 4. Paint / Stain finish TBC. This will achieve 30 year durability (according to TRADA).
Sapwood excluded. Holes to be pre-drilled and slightly oversized to avoid splitting.
Stainless steel fixings, length two times the thickness of board. (SE to comment).

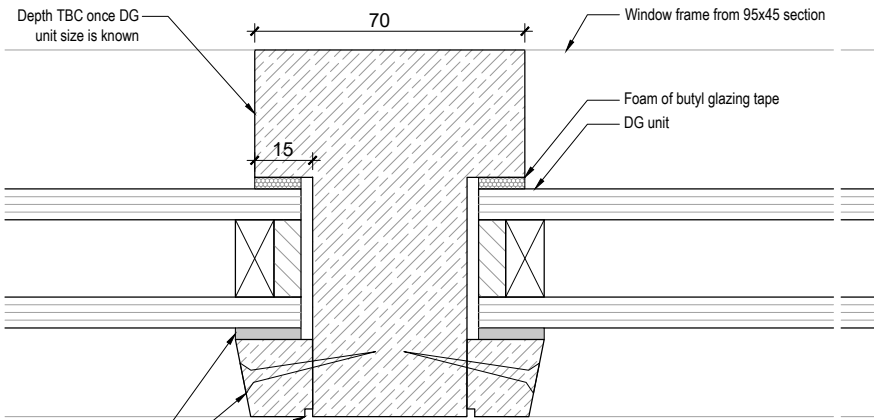
2 Detail, Shopfront Type Windows
811 Scale 1:1 Head Type 1



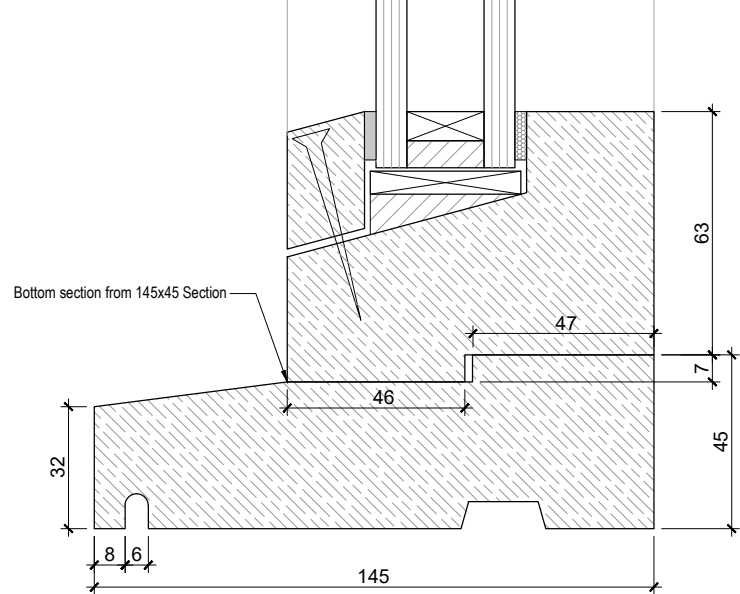
1 Detail, Shopfront Type Windows
811 Scale 1:1 Sill Type 1



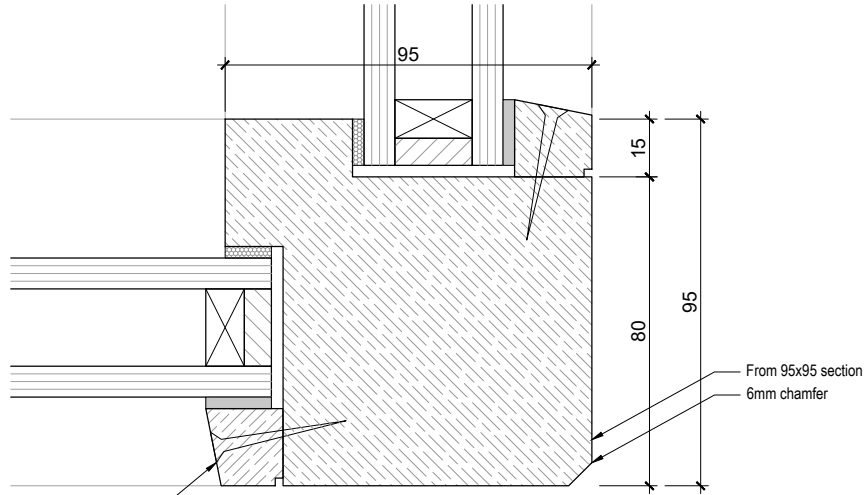
6 Detail, Shopfront Type Windows
811 Scale 1:1 Head Type 1



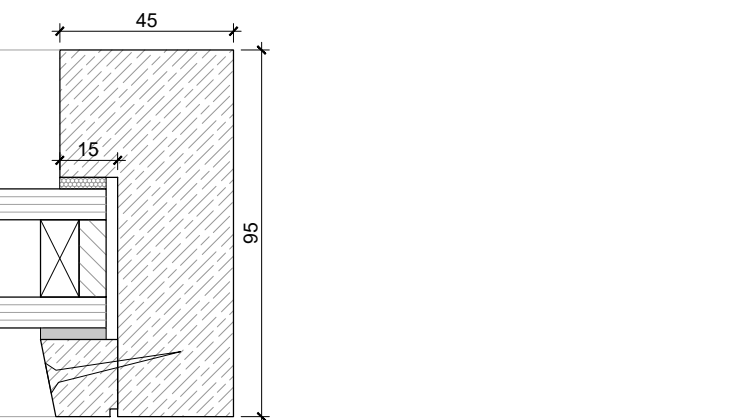
4 Plan Detail, Shopfront Type Windows
811 Scale 1:1 Mullion



8 Detail, Shopfront Type Windows
811 Scale 1:1 Sill Type 2



7 Plan Detail, Shopfront Type Windows
811 Scale 1:1 Corner Mullion



3 Plan Detail, Shopfront Type Windows
811 Scale 1:1 Frame

TENDER ISSUE

NOTES:
Reg U Values:

Windows - 1.2
Rooflights - 1.2
Doors - 1.2

REVISIONS
Rev - (05.11.19) Initial Issue. (SH)

kdpa

Basepoint Business Centre, Little High Street,
Shoreham by Sea, West Sussex BN43 5EG
+44 (0)1273 467518 www.kdpaine.co.uk

CLIENT	JD WETHERSPOON PLC		
PROJECT	PUB NO: 7321 THE GRAPE & GRAIN CRYSTAL PALACE		
DRAWING	SHOP FRONT TIMBER WINDOW DETAILS		

SCALE	DATE	DRAWN
1:1 @ A1	October 2019	SH
PROJECT No	DRAWING No	REVISION
7065	T-811	/