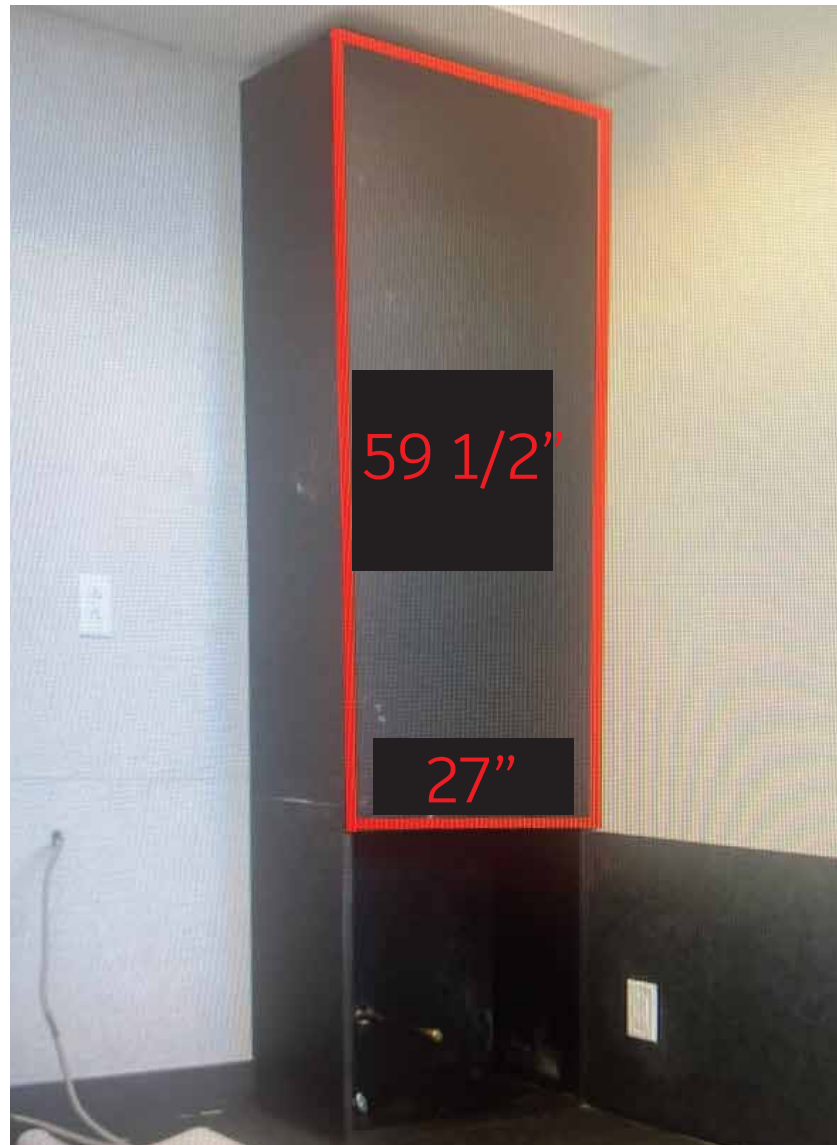
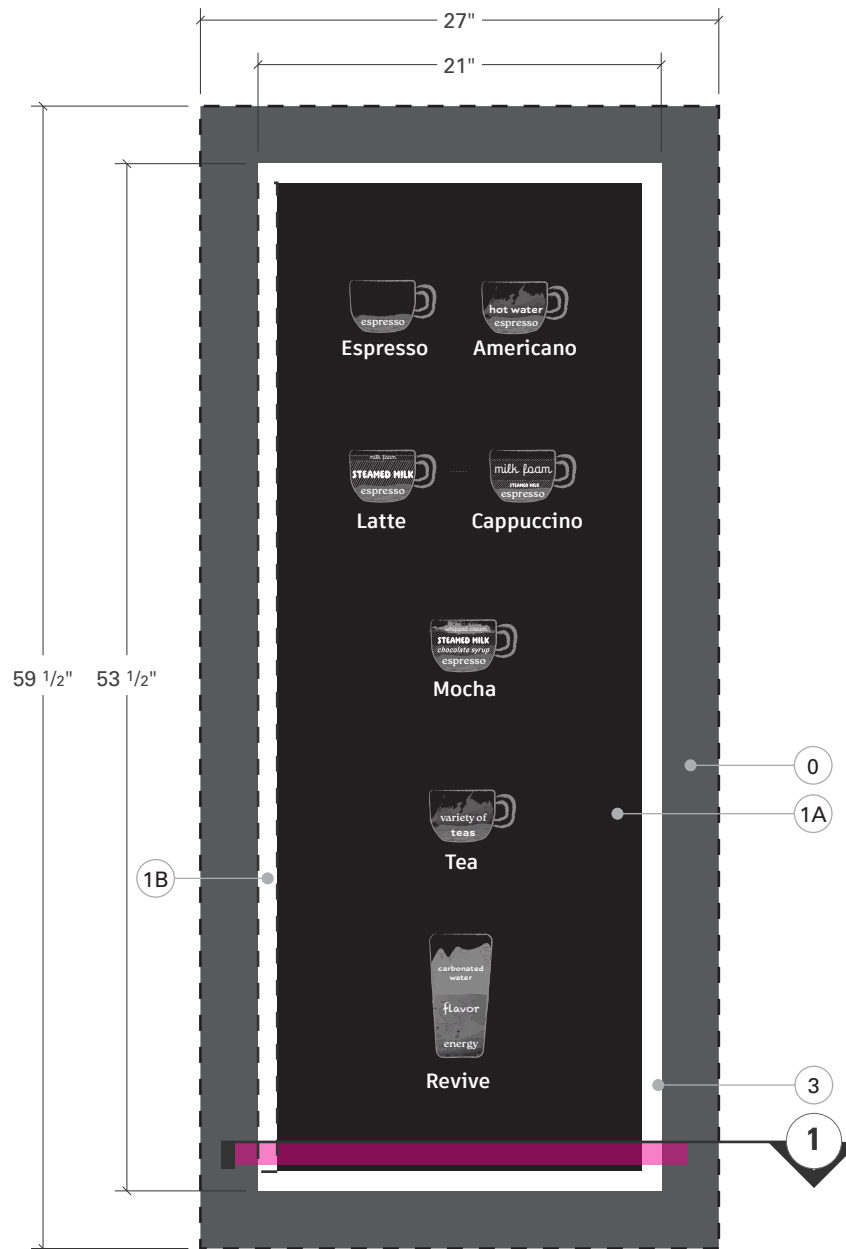


1 SECTION



2 SPEC PHOTO AND DIMENSIONS



3 CUP COLLAGE BOARD  
QTY: 1  
LOCATIONS: 103

**SPECIFICATIONS**

**MATERIALS/METHOD:**

- 0: Existing cabinet
- 1A: 0.25" ACM stock black panel. Route to shape. UV direct print copy w/spot layer.
- 1B: 0.125" ACM spacer; lord adhesive to right side of sign to fill gap on removable side
- 2: 0.75" MDF frame; Routed to void -0.375; MAP Matte Black painted surfaces, MAP Satin White painted outer returns. Through mount holes to be counter sunk for mounting sign to cabinet door
- 3: 0.1875" Aluminum metal face; painted surfaces and returns; adhere to element 2

**FONTS**

logo provided by client  
Artifakt Element reg.

**COLORS**

- 1A: Black stock ACM w/ Spot layer.
- 1B: Black stock ACM
- 2: MAP Matte Black: faces  
MAP Satin White outer returns
- 3: MAP Satin White

**INSTALL NOTES**

Through mount sign frame to wall with wood screws and insert panel.