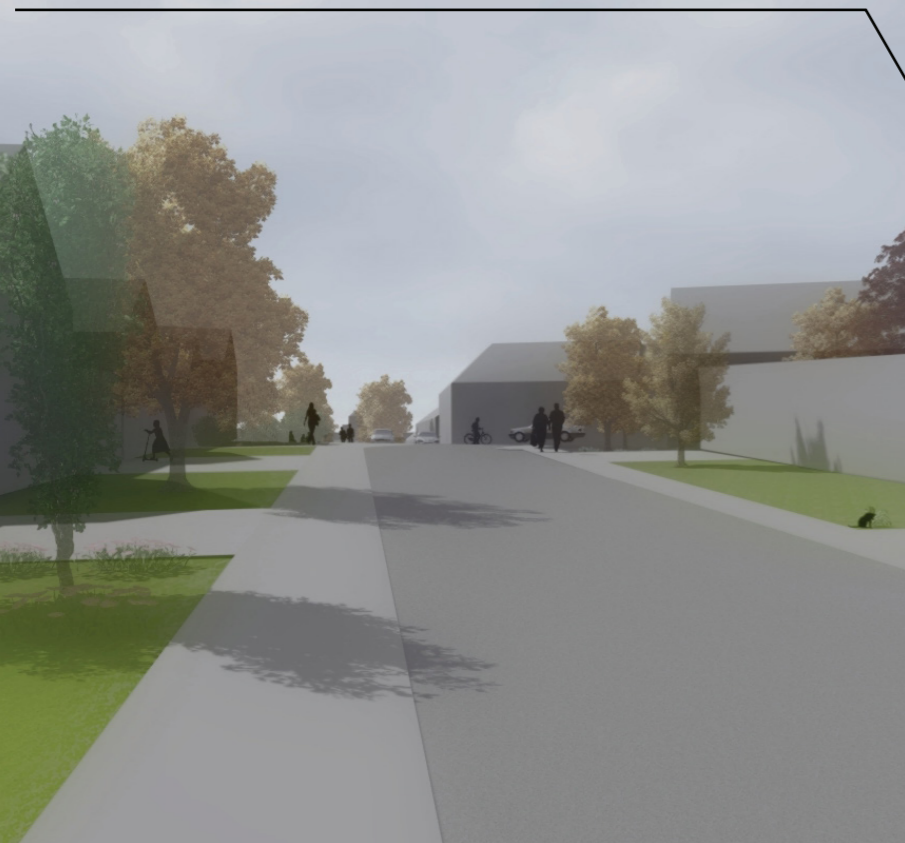
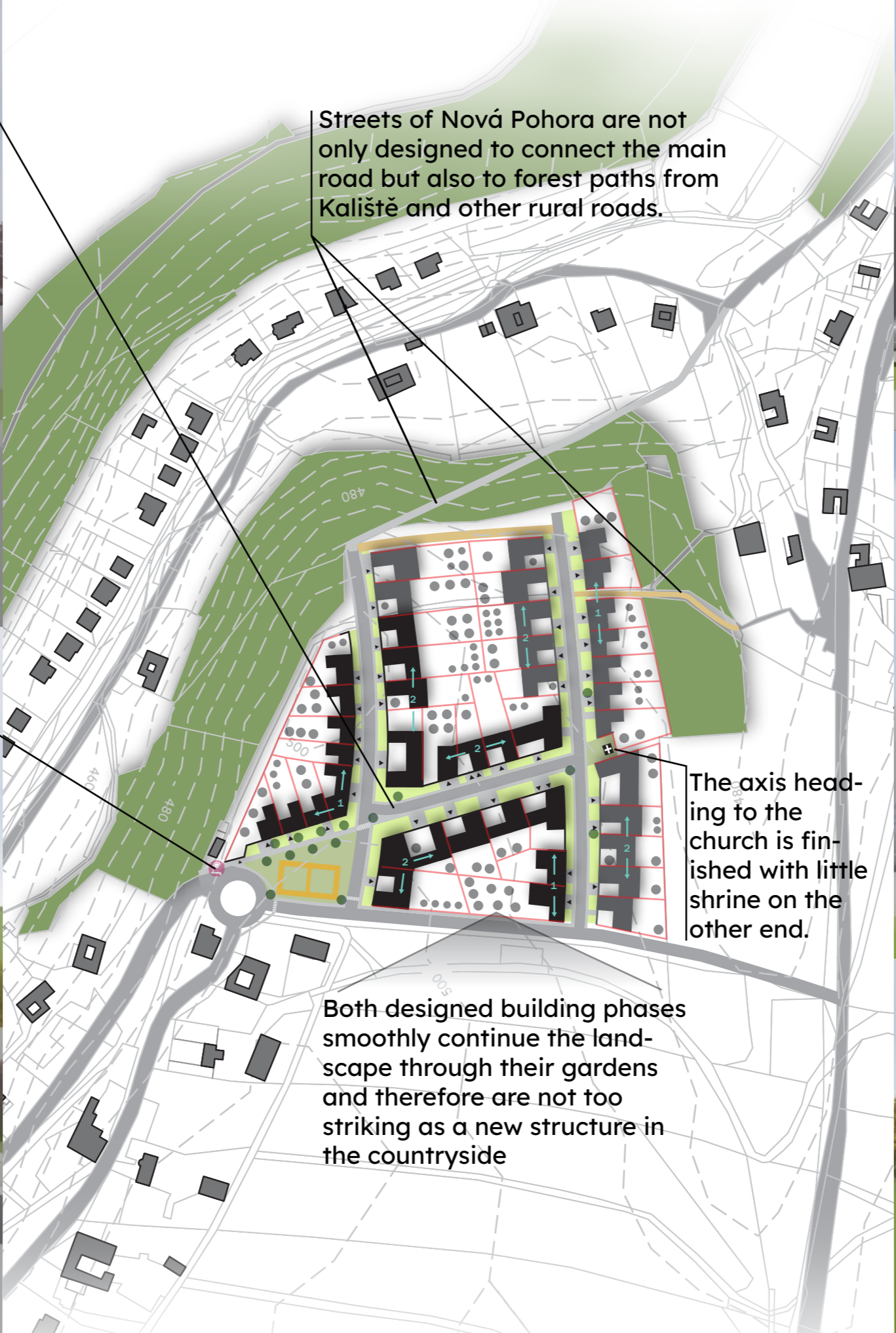
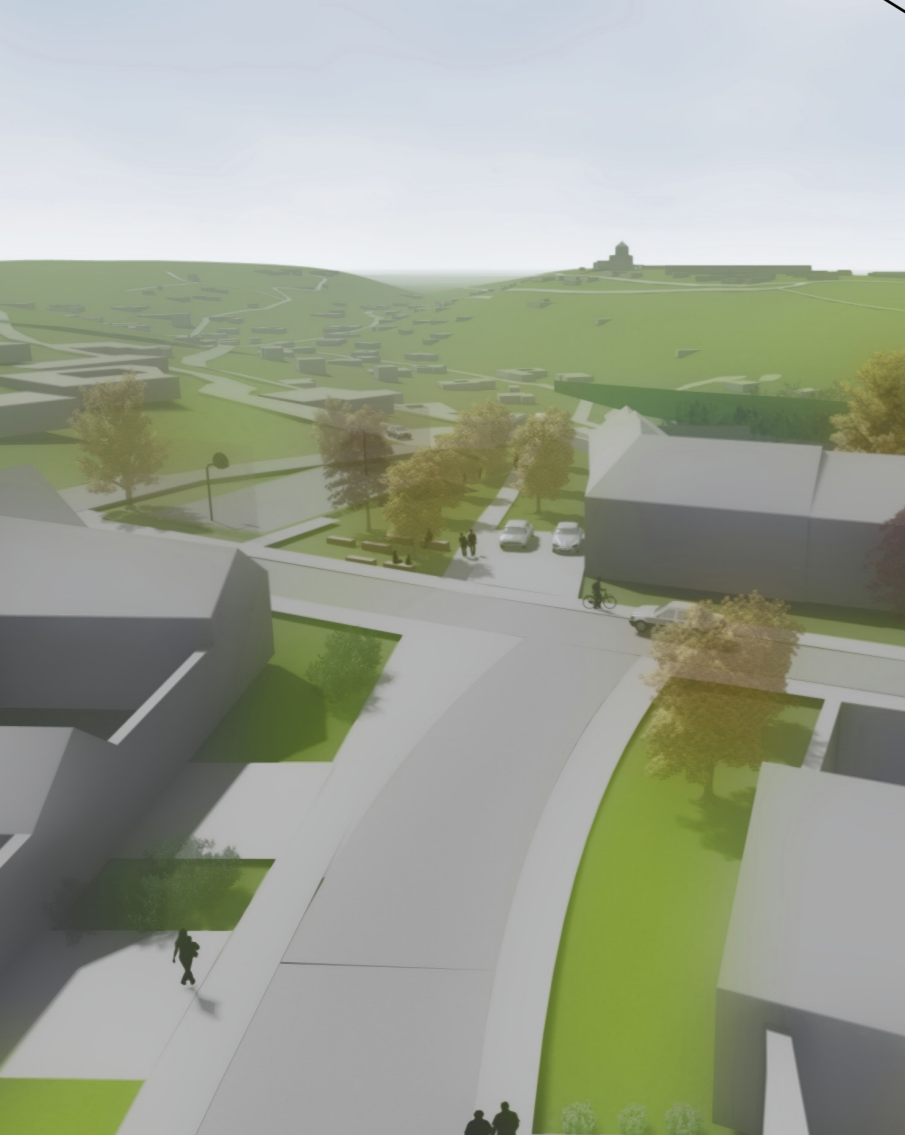


The main street is, through a visual axis towards the church, connected to the core of Sebranice.



Where Nová pohora attaches to the existing village structure, near the designed bus stop, there is a public space with playground.



Streets of Nová Pohora are not only designed to connect the main road but also to forest paths from Kaliště and other rural roads.

The axis heading to the church is finished with little shrine on the other end.

Both designed building phases smoothly continue the landscape through their gardens and therefore are not too striking as a new structure in the countryside

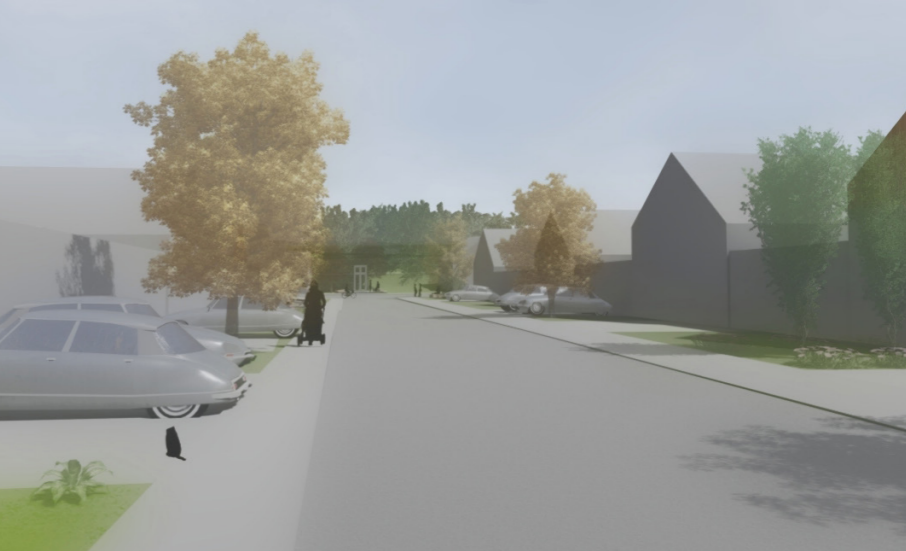
Sebranice - Nová Pohora

study of residential development of Sebranice municipality
Martin Šálek under Ing. arch. Jan Májek, Ph.D. | Inst. of Architecture FCE, VUT Brno 2019-20

Private and public space are divided through wall. There are small garden beds and parking spaces in front.



Developed system of structure layout aims on cost-saving use of land and strong neighbour relations between present and newcoming inhabitants while preserving private space of houses' courtyards and gardens.



Proposed bus stop also serves the northerly part of Sebranice, Kaliště, as its closest stop, and therefore tightens the connection of the municipality.

