

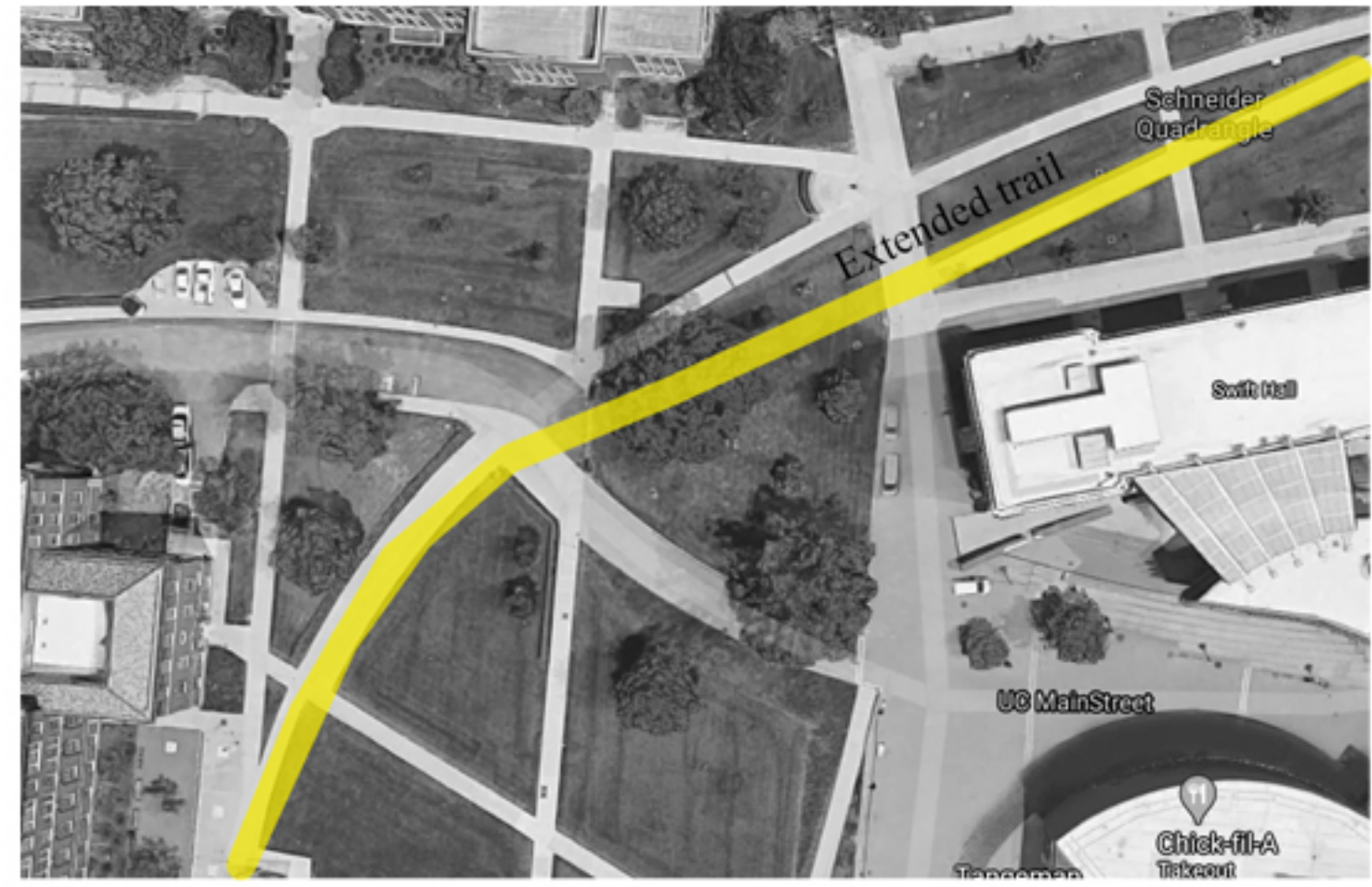
Exercise 4: Contemplative Landscape

LAND 7041 Sustainable Sites I Studio

Xianglang Li

Memorial Park (COVID 19)

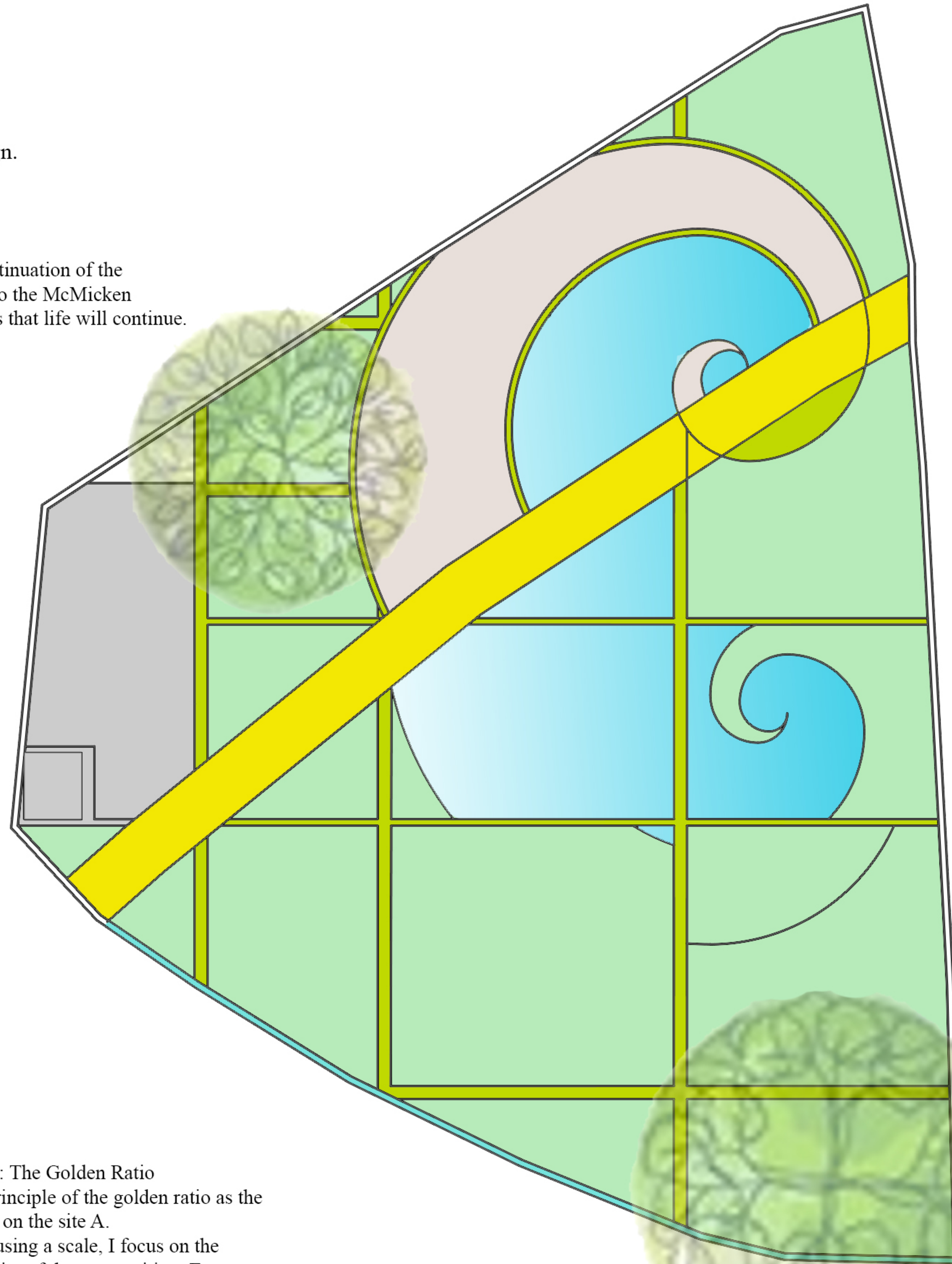
Landscape architecture has a role on this planet, it can emphasize a social event, an epitome of an era. When Contemplative Landscape takes place, it plays a role in the community as a commemorative design. The goal of the project is to remember the disaster and further develop human society.



This pathway is the continuation of the Schneider Quadrangle to the McMicken Commons. It symbolizes that life will continue.

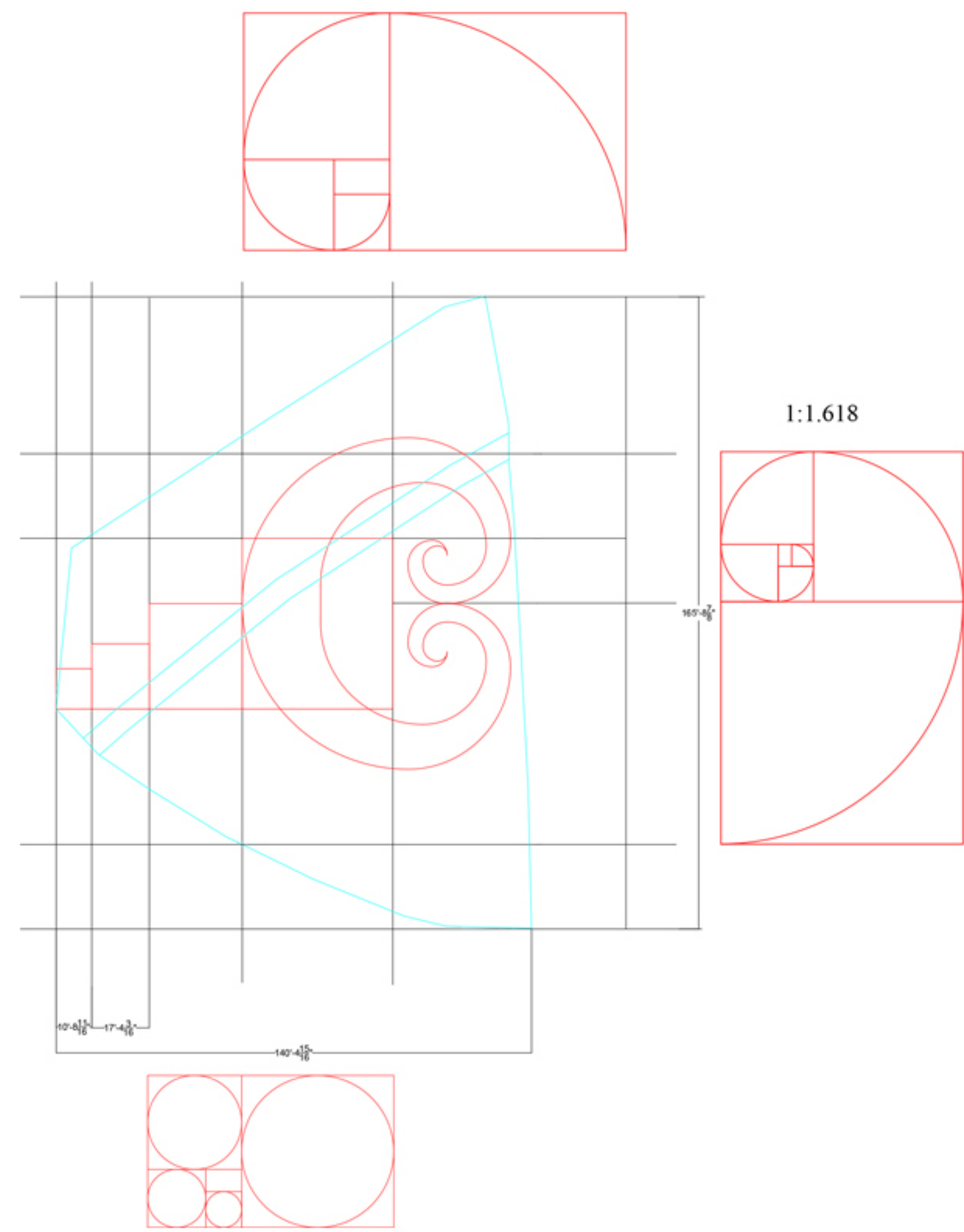
Active contemplation

-The monument: carved names of people who lost their lives in the virus (disaster).

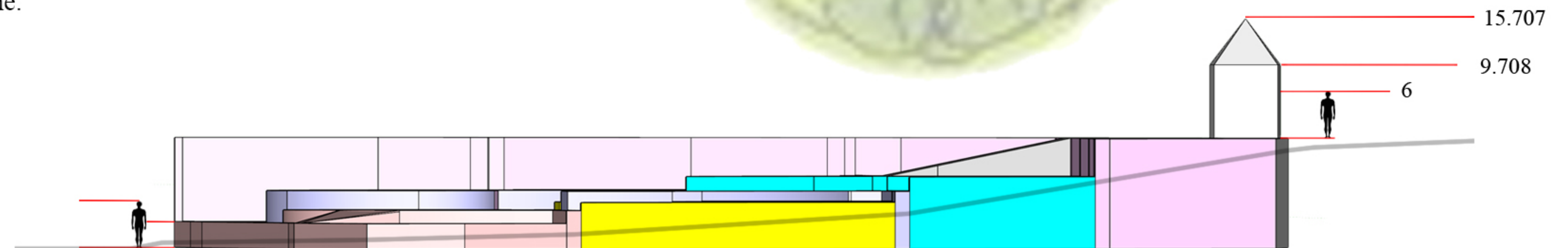


Passive contemplation
 -The path through the site
 -The overall theme of the design
 -The use of metaphor for the design of "loss of life" where the walkway cuts through the "heart shape". The form of this shape is the transformation of the golden ratio.

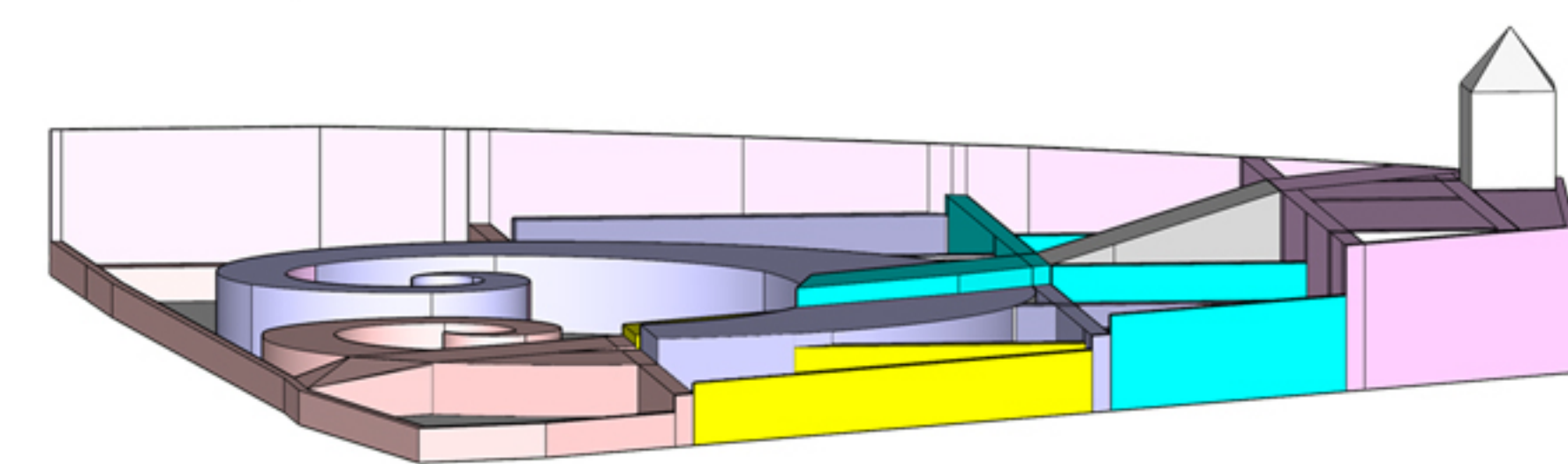
- Accessible platform
- Monument
- Path
- Shrubs
- Living wall
- Water
- Ground Cover



Grid system: The Golden Ratio
 I used the principle of the golden ratio as the basic layout on the site A.
 In terms of using a scale, I focus on the proportionality of the composition. Every grid line is 1.618 times bigger or 0.618 smaller than the nearest one.



Proportion & Scale
 Followed the rule of the golden ratio, the height of each plane is in a 1:1.618 scale.



1/16" = 1'-0"

Case study of Contemplative Landscape: Vietnam memorial

