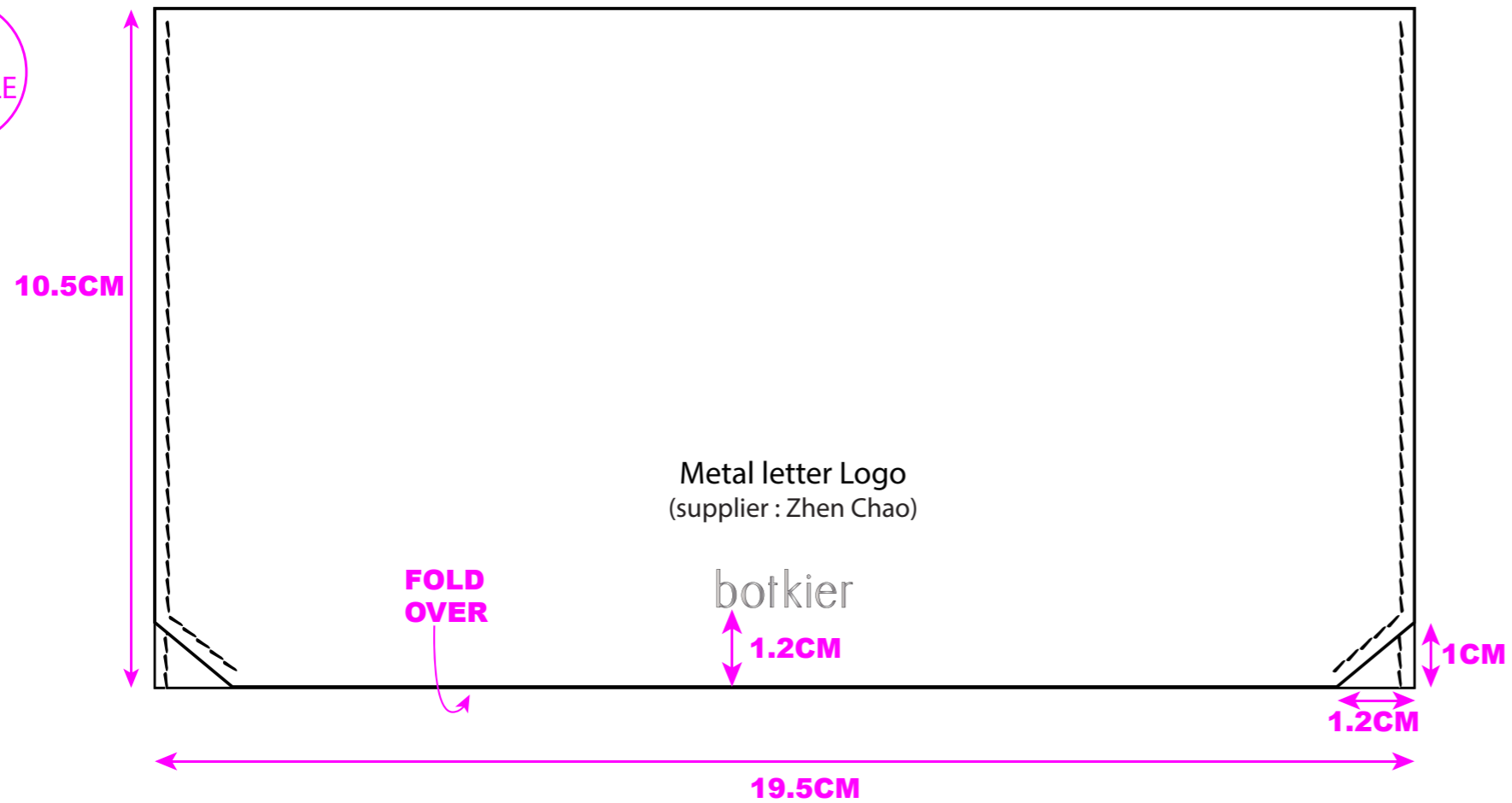


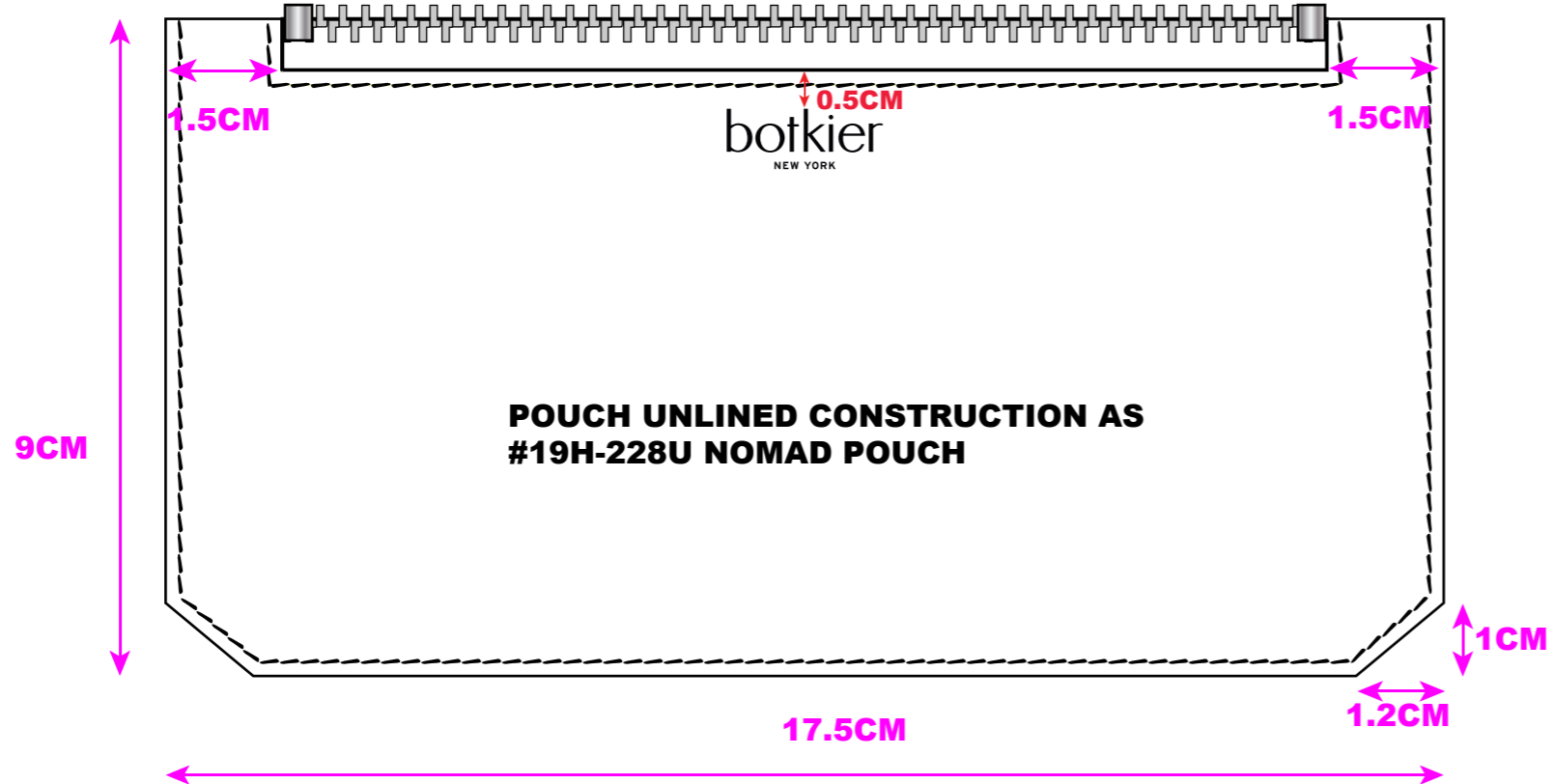
botkier

100% TO SCALE

FRONT VIEW



POUCH UNLINED CONSTRUCTION AS #19H-228U NOMAD POUCH



POUCH UNLINED CONSTRUCTION AS #19H-228U NOMAD POUCH

STYLE #	19H- 228R	SEASON	MAY MKT - HOLIDAY 19
DESIGN#	YS228R	GROUP	NOMAD
ROUND	PROTO	DATE	2/18/2019
		FACTORY	YS

MATERIALS	STITCH
BODY A (TOP GRAIN)	6PLY - 8SPI
BODY B (FOIL SIDE)	EDGE FINISH
PARTIALLY LINED	RAW EDGE W/ EDGE PAINT
	TEMPER
	BODY - SINGLE LAYER LEATHER
	ZIPPER
	INT : #3 METAL

COMMENTS

- ALL EDGES ARE RAW EDGE W/ EDGE PAINT unless indicated otherwise.
- Please refer reference samples & images where applicable.

HARDWARE

HW: 1858
Metal letter Logo
(supplier : Zhen Chao)

botkier

COVER THE WASHER W/ LEATHER FOR UN-LINED CONSTRUCTION

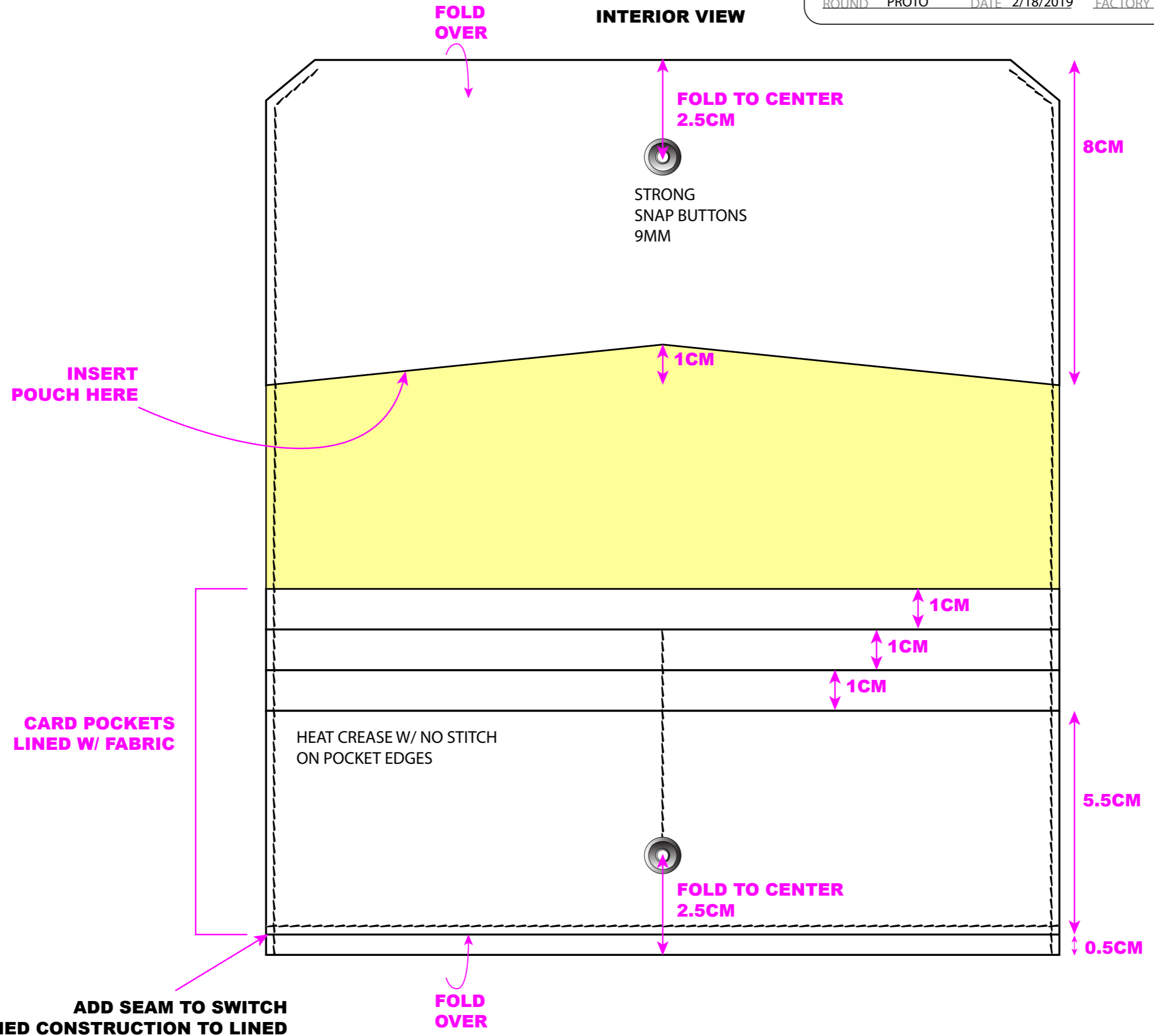
HW-1838 zipper pull



100% TO SCALE

STYLE #	19H- 228R	SEASON	MAY MKT - HOLIDAY 19
DESIGN#	YS228R	GROUP	NOMAD
ROUND	PROTO	DATE	2/18/2019
		FACTORY	YS

INTERIOR VIEW



ADD SEAM TO SWITCH UN-LINED CONSTRUCTION TO LINED (PLEASE ADVISE IF THIS WILL CAUSE A PROBLEM)