

### SNAP BUTTON NOSE OPTIONS FOR ALL SRS

PLEASE READY 3 OPTIONS OF SNAP BUTTONS AS BELOW.  
PLEASE PHOTO CONFIRM BEFORE APPLY TO THE ACTUAL SRS.

#### OPTION #1



ENAMEL FINISH  
DTM TO  
**PEACH** SAFFIANO

#### OPTION #2



ENAMEL FINISH  
DTM TO  
**GHOST** SAFFIANO

#### OPTION #3



GUNMETAL  
PLATING FINISH

#### MATT ENAMEL FINISH REFERENCE IMAGE



#### 3D EARS REVISION FOR ALL SRS

1. SIZE CHANGE - 3MM SHORTER FROM PROTO SAMPLE
2. SHAPE CHANGE - ROUND EDGE AS 100% DRAWING (PROTO SAMPLE CAME IN WITH POINTY EDGES)

PLEASE PHTO CONFIRM WHEN PAPER PATTERN IS REVISED.



#### HARDWARE

HW-1804 Logo clip  
(supplier : Zhen Chao)



HW-1838 zipper puller



HW-1966 BOTKIER LOGO SNAP 10MM



STYLE # 19H-202

SEASON MAY MKT / HOLIDAY 2019

DESIGN# YS202

GROUP NEW YEAR SLG

ROUND SRS

DATE 3/26/19

FACTORY HC

#### MATERIALS

#### STITCH

SAFFIANO A

----- 6PLY - 8SPI

SAFFIANO B

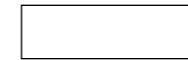
#### EDGE FINISH

RAW EDGE W/ EDGE PAINT

SAFFIANO C

#### ZIPPER

EXT : #3 METAL



ULTRASUEDE LINING

#### COMMENTS

- ALL EDGES ARE RAW EDGE W/ EDGE PAINT **unless indicated otherwise.**
- Please refer reference samples & images where applicable.

#### #19H-202R FLAP CARD CASE (#YS202R)



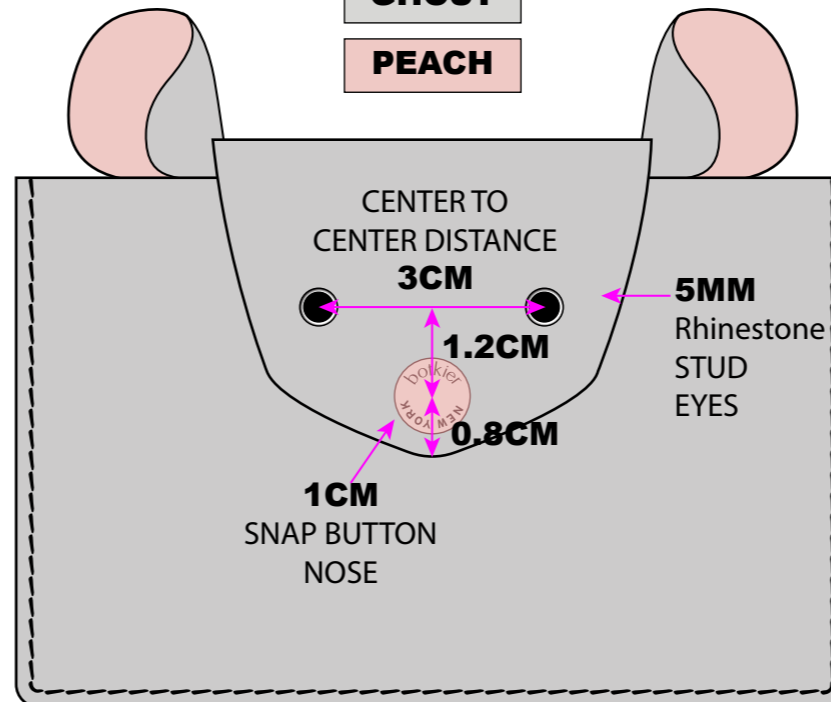
#### REVISION

1. FLAP FACE SHAPE: PLEASE FOLLOW BELOW DRAWING
2. EYES & NOSE POSITION ADJUSTED AS BELOW DRAWING
3. COLORWAY ADDED

#### GHOST COLORWAY

GHOST

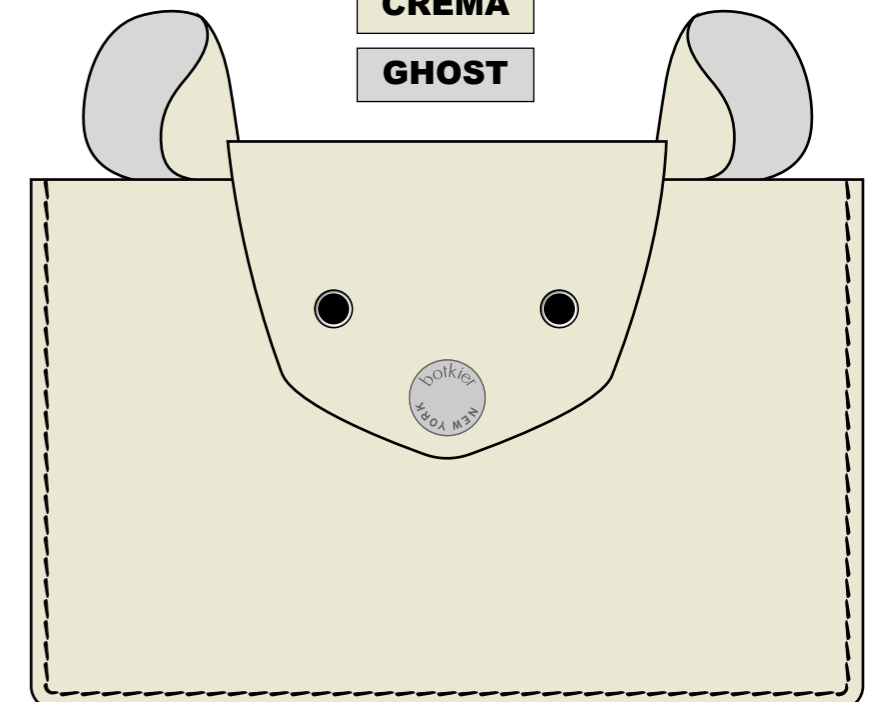
PEACH



#### CREMA COLORWAY

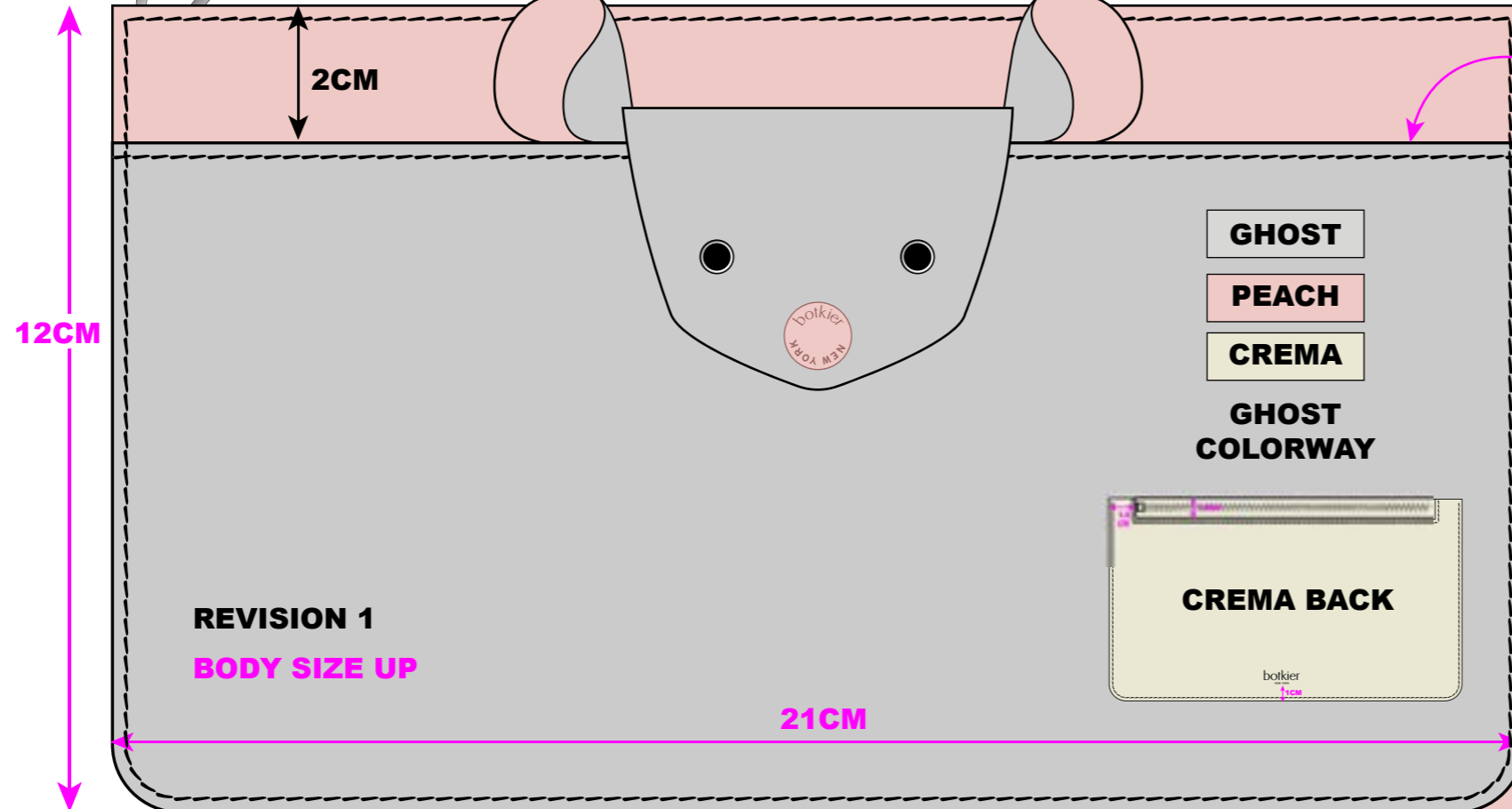
CREMA

GHOST



STYLE #	19H-202	SEASON	MAY MKT / HOLIDAY 2019
DESIGN#	YS202	GROUP	NEW YEAR SLG
ROUND	SRS	DATE	3/26/19
		FACTORY	HC

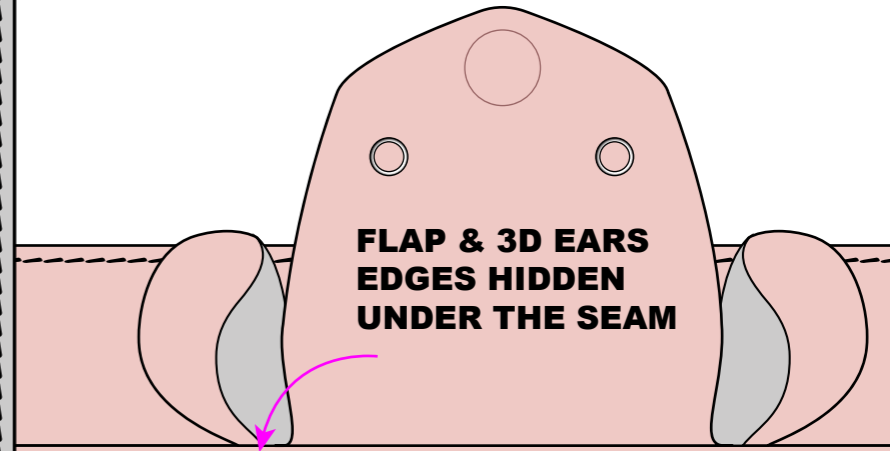
MOUSE FACE FLAP & EARS  
THE SAME AS #19H-202R FLAP CARD CASE



**POCKET  
(DO NOT STITCH DOWN TO BODY)**

100%  
TO SCALE

**REVISION 2  
ADD MOUSE FACE FLAP ON FRONT BODY**



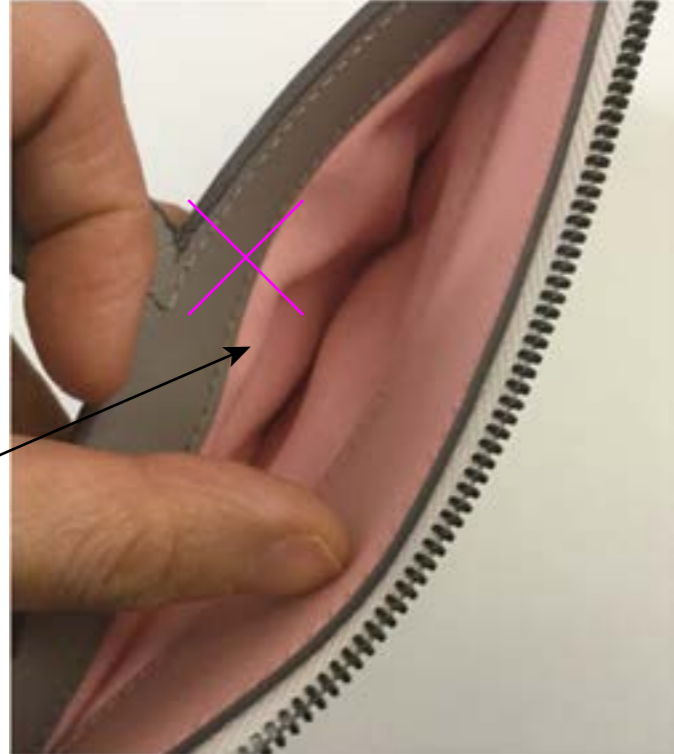
BEHIND THE POCKET VIEW

**REVISION 1  
BODY SIZE UP**

**GHOST**  
**PEACH**  
**CREMA**  
**GHOST  
COLORWAY**

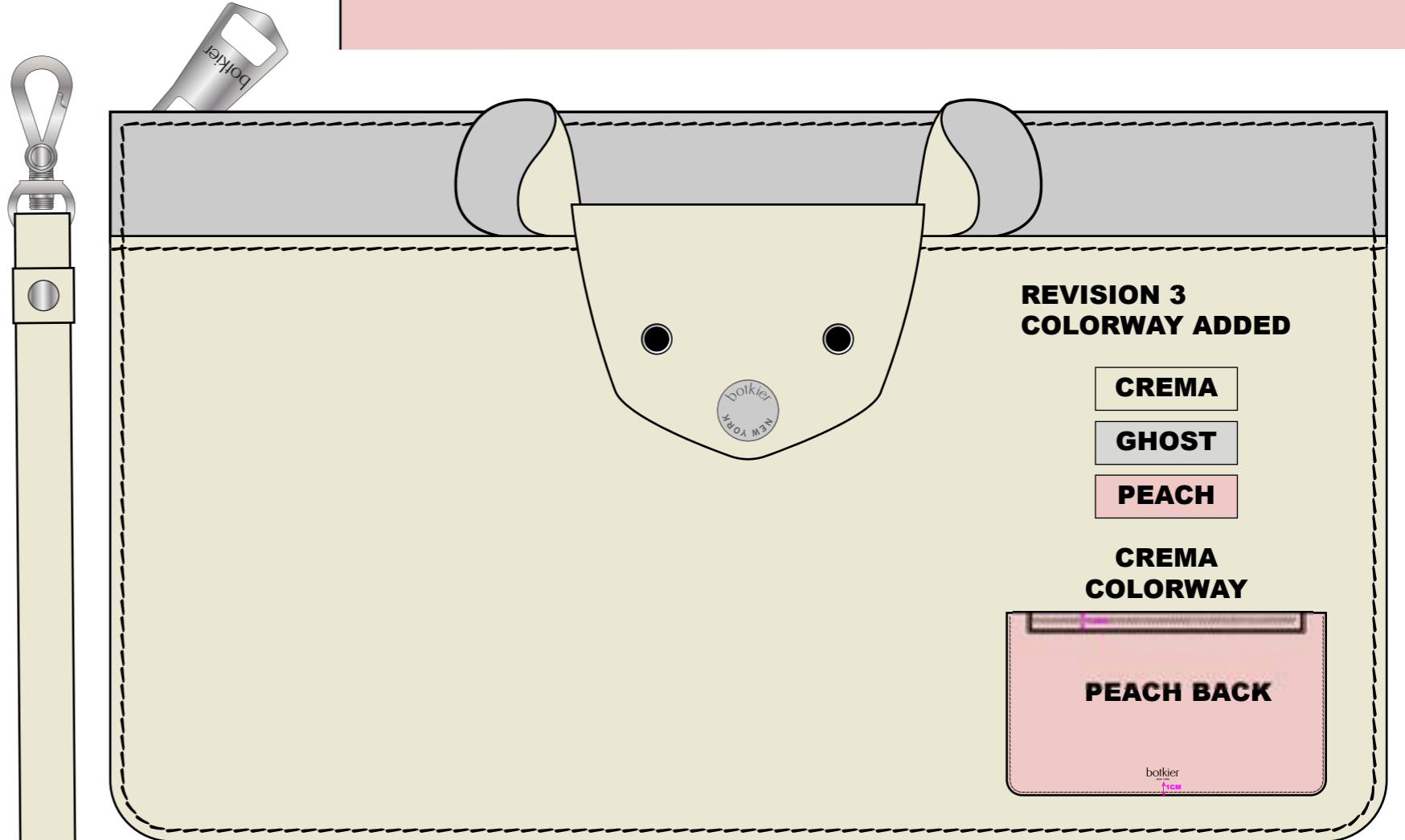
**CREMA BACK**

**REVISION 3  
PLEASE MAKE SRS W/  
ULTRASUEDE BACKED SAFFIANO  
AS #19H-202R FLAP CARD CASE**



**SAFFIANO BODY +  
ULTRASUEDE BACKING  
(NO DROP IN LINING)**

**PLEASE DO NOT USE  
STIFF CARDBOARD  
INTERLINING/BACKING**



**REVISION 3  
COLORWAY ADDED**

**CREMA**  
**GHOST**  
**PEACH**

**CREMA  
COLORWAY**

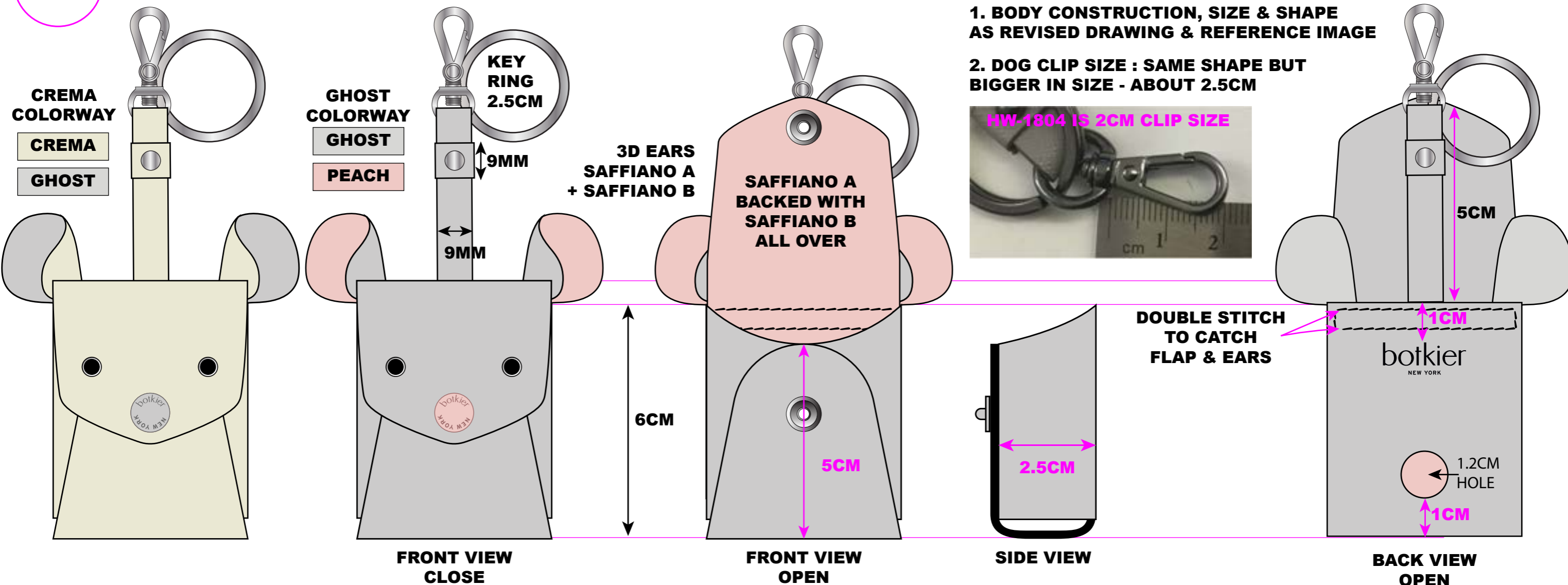
**PEACH BACK**

#19H-202Z AIRPODS CASE / KEY RING (#YS202Z)

FLAP FACE SHAPE: PLEASE FOLLOW BELOW DRAWING

STYLE #	19H-202	SEASON	MAY MKT / HOLIDAY 2019
DESIGN#	YS202	GROUP	NEW YEAR SLG
ROUND	SRS	DATE	3/26/19
		FACTORY	HC

100% TO SCALE



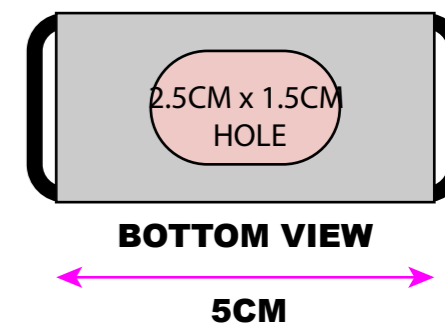
REVISION

1. BODY CONSTRUCTION, SIZE & SHAPE AS REVISED DRAWING & REFERENCE IMAGE

2. DOG CLIP SIZE : SAME SHAPE BUT BIGGER IN SIZE - ABOUT 2.5CM



PROTO SAMPLE COMMENTS



2. ADD 5MM SEAM ALLOWENCE FROM DOUBLE STITCH LINE TO HIDE EDGES OF EARS & LEATHER STRAP