

HEALTHCARE: PACIFIC HOSPITAL

DEL MAR, CALIFORNIA

Del Mar is a beach city in San Diego County, California. Del Mar is Spanish for "of the sea" or "by the sea," which reflects its location on the coast of the Pacific Ocean.



EQUITABLE USE

DURABLE MATERIALS

ACCESS TO NATURE

STAFF CONSIDERATION

MOTIVATIONAL ELEMENTS

FLEXIBILITY IN USE



PACIFIC WELLNESS HOSPITAL



CONCEPT

SEAGLASS

SEA GLASS IS SIMPLY GLASS THAT HAS BEEN DISPOSED OF IN THE OCEAN, TUMBLING AND WEATHERING INTO SMOOTHED PEBBLES. SEA GLASS IS WELL REGARDED AS A SYMBOL OF RENEWAL AND HEALING, A METAPHOR FOR LIFE. SEA GLASS TAKES 20 TO 40 YEARS, AND SOMETIMES AS MUCH AS 100 YEARS, TO ACQUIRE ITS CHARACTERISTIC TEXTURE AND SHAPE, SOMEWHAT LIKE HUMANS. PEOPLE ARE CONSTANTLY AGING AND BEING WORN DOWN.

HAVE ACCESS TO COMPLIMENTARY WI-FI, EXPRESSO, WATER AND CHARGING STATIONS FOR PHONES.

MATERIALS THAT DO NOT OFF-GAS VOC'S WERE SELECTED TO ALLOW ALL PERSONS WITHIN THE BUILDING A BETTER INDOOR AIR QUALITY.



VIEW OF THE RECEPTION AND WAITING AREA

THE PACIFIC WELLNESS HOSPITAL IS DESIGNED TO COMBINE GENERAL HEALTHCARE WITH OTHER HEALTHY OPPORTUNITIES THAT WILL FILL THE NEEDS OF PEOPLE AT EVERY STAGE OF LIFE. PACIFIC WELLNESS HOSPITAL IS LOCATED IN DEL MAR, CALIFORNIA. A SPECIFICALLY PLACE FOR SELF CARE SURROUNDED BY THE HUSTLE AND BUSTLE OF THE HIGHLY POPULATED AND FAST MOVING URBAN AREA.

VARIOUS ITEMS WERE PLANNED INTO THE DESIGN OF THE PHYSICAL ENVIRONMENT TO REDUCE THE STRESS, PROMOTE HEALING AND ENABLE THE STAFF TO BETTER CARE FOR THE PATIENTS.

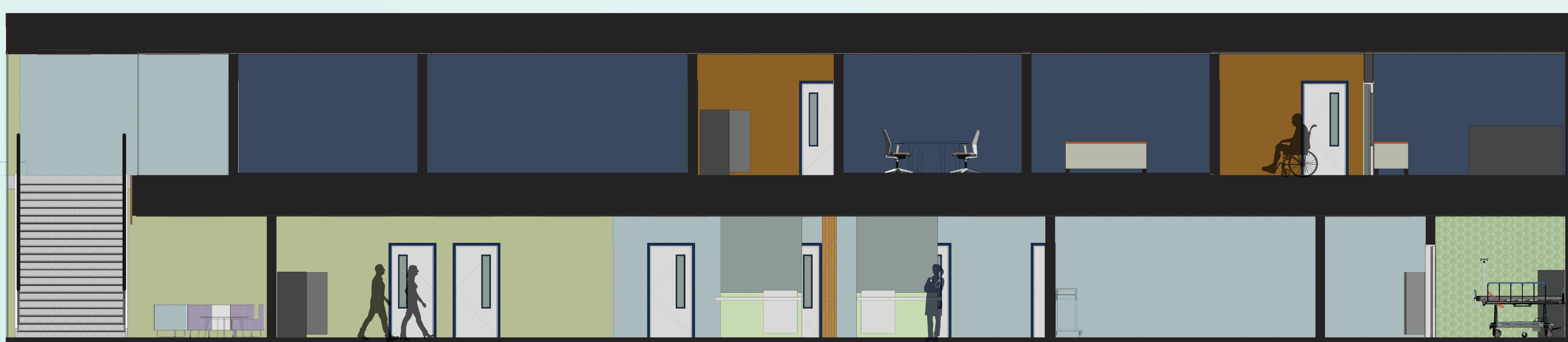
THE ENTIRE SPACE IS UPLIFTING WITH A VARIETY OF BRIGHT COLORS, CRISP EYE-CATCHING FINISHES, MATERIALS AND TEXTURES.

COLOR THEORY

NATURE	REFRESH	CALM	MATURITY	DEVOTION
CONFIDENCE	UPLIFT	BALANCE	EARTHY	WISDOM
HIGH ENERGY	CREATIVE	EMOTION	STRENGTH	POWERFUL



VIEW OF THE STAIRWAY ENTRANCE



SECTION SCALE: 1/2" = 1'

LEAH ZOESCH

ID302

SPRING '20

PROFESSOR PERRY