

ARCHITECT

PROJECTS **TECH & PRODUCTS** PRACTICE CULTURE AWARDS EVENTS CONTINUING ED[Home](#) > [Technology](#) > [Products](#) > Let There Be Tunable Light

ARCHITECTURAL LIGHTING INTEL

PROJECTS

f t in

Let There Be Tunable Light

How a new lighting system supports engagement, performance, and well-being

Brought to you by Philips Lighting

Can a classroom teacher, business leader, physician, or retailer trigger a desired behavior with a single tap? That's the promise of tunable white lighting, a proven way to orchestrate light quality, color, and intensity to transform the indoor experience. As a growing body of scholarship has demonstrated, the effect of lighting is profound on health and mood. A tap of a wall display can now enhance individual and team engagement, improve performance, and lift well-being.

While the idea sounds simple, up until recently the idea of specifying it for schools, businesses, hospitals, and retail locations was a challenge.

Architects and lighting designers looking to specify the new lighting technology faced a harsh choice. They could mix-and-match LED luminaires with off-the-shelf lighting control systems. Unfortunately, that choice created daunting controller calibration issues across locations and even fixtures.

The other choice was to opt for a single-source, closed-loop approach. Although this method solved one problem, it created others: High expense for a system over-engineered for most applications. In recent weeks, [Philips Lighting](#) North America, based in Somerset, N.J., announced a breakthrough tunable white lighting system that offers a rapidly-scalable, full-featured system without the drawbacks mentioned above.

The new Philips system was previewed this past April at Lightfair in San Diego to wide acclaim. It was released to the North American market in August.

"The Philips tunable white system is a combined offering of Philips tunable white enabled luminaires and Philips controls package," says Rahul Shira, Philips product marketing manager, controls and software. "The controls package has been optimized to offer a uniform and predictable fixture performance that designers have been seeking. The scalability and flexibility of the controls package means that the system becomes budget friendly relatively quickly when multiple spaces on a floor are enabled with the tunable white functionality, leveraging economies of scale savings."

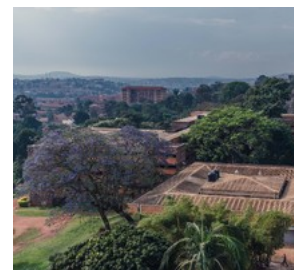
The system closely mimics natural lighting, which studies show affects how we feel and function. For example, the Philips tunable white lighting system can be adjusted to cooler temperatures and higher intensities to support concentration and focus in functional activities. For activities requiring creativity and cooperation, lighting can be adjusted to warmer temperatures and lower intensities. Educators use system presets to modulate for testing, classroom calming, and general activities.



Out of Office
Soft-Firm



One Delisle
Studio Gang Architects



African Modernism: K Workshop
Adengo Architecture

[view more](#)

VIDEO

"Architects and lighting designers now have an alternative that offers a unique, comprehensive palette to address dynamic daylighting, predetermined scene setting, and personal control," Shira says. He also points out that more and more owners understand how solid-state LED technology can transform environments:

- **Health Care**—Hospitals and other care centers benefit from the natural cycle of daylight that tunable lighting can mimic, preserving a healing circadian sleep-wake pattern.
- **Retailers/Restauranters**—Lighting is a proven differentiator and tunable white lighting can enhance product-appeal and ambiance by changing color temperatures and intensity levels with on-the-fly ease.
- **Work Spaces**—Management can craft lighting to suit the task or empower employees with the freedom to optimize color temperature and brightness to suit individual tastes.

Shira says that the system supports designers with the choice of recessed, downlight, and suspended luminaires. To experience tunable white lighting firsthand, request an in-office demonstration by contacting one of the [Philips sales representatives](#).

For more information about Philip's tunable white technology, visit the [Philips website](#).

Keywords:

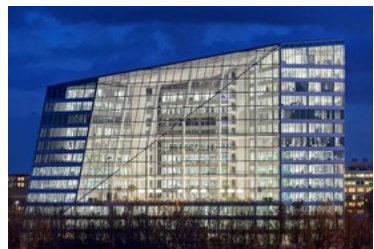
SUBJECT:

Products Lighting Color

PRODUCT TYPES:

Lighting Controls & Systems

MORE FROM PHILIPS LIGHTING



Beyond Illumination: Meet the World's Two Smartest Office Towers

BROUGHT TO YOU BY PHILIPS LIGHTING



What's the First Thing Retail Shoppers Reach for?

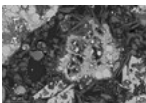
BROUGHT TO YOU BY PHILIPS LIGHTING



Core Materials: Better Concrete, Better Steel

[view more](#)

MOST POPULAR



Week in Ancient Concrete That...



AIA Nan Inauguration Member Next...



7 Open-Source Options Architects



A Textural Library in China, a Sustainable



2022 ARCHITECT Light & Architecture Design..

NEXT PROGRESSIVE



Next Progressives: So

BRIEFS

Foster + Partners to E
Under Partnership wit
HennickCo

AIA Names 17 Inaugu
Members of Its Next t
Program

17 Building Projects S
for the COP26 Built
Environment Virtual P

American Society of
Landscape Architects
2021 Professional Aw
Winners

Architecture 2030 and
Building Industry Lea
on World Government
Lead on Climate

The National Institute
Building Sciences Rev
2021-22 Board of Dire

Stephen Kieran and J
Timberlake Awarded
Louis I. Kahn Award

[view more](#)



Builder

Single-Family Starts Level Out in September

2022 Design & Construction Week Health and Safety Guidelines Updated

10,000-Home Master Plan Approved in Apache Junction, Arizona

NAHB, NLBMDA Call on White House to Address Price Volatility, Supply Chain Issues

Kept Classic Homes Acquires Active-Adult Lots in Kerrville, Texas

New Wire-Brushed Treatment Available for Viewrail Stair Treads

REMODELING

Easy-Install Outdoor Kitchens

October Mist is Benjamin Moore's Color of the Year 2022

Powder-Coated Aluminum Decking

Panelized Stone Cladding

Keeping Critters Out of Heat Pumps

Casingless Door Trim

The Root of Successful Remodeling Marketing

Tool Test: Evolution Single Bevel Sliding Miter Saw



2021 DIGITAL EDITION

[Subscribe](#)

Architect Magazine: Architectural Design | Architecture Online: The premier site for architecture industry news & building resources for architects and architecture industry professionals.

Relevant Sites | ArchLighting | Builder | Journal of Light Construction | Concrete Construction | Remodeling | Zonda Home

Copyright © 2021 Zonda Media, a Delaware corporation. All rights reserved.

[Masthead](#) | [FAQs](#) | [Advertise](#) | [Magazine](#) | [About Zonda Media](#) | [Contact](#) |

