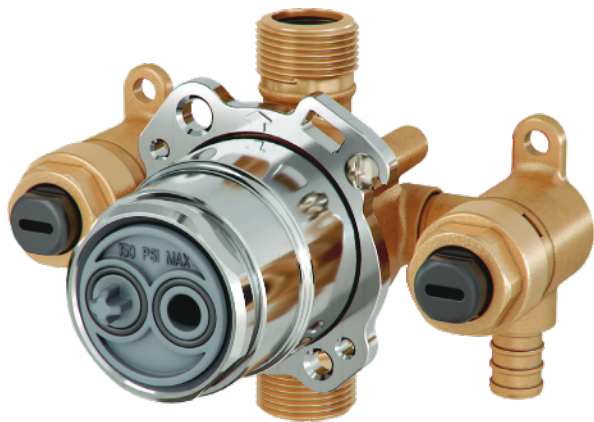


GERBER

TREYSTA®

Tub & Shower Rough-in Valve



## Work Smarter. Not Harder.

Integral mounting holes for fast, secure mounting

Quarter turn stops easily open and close using a flat head screwdriver

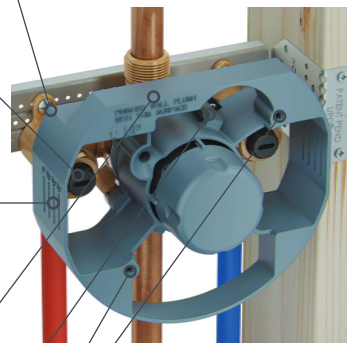
Stops secured with durable, threaded brass nut easily secured with standard socket

Finished wall depth indicators in 1/4" increments for easy depth indexing

Top and side surfaces are flat to simplify tile cutting and help ensure level installation

Plaster guard features a no-tool clip design for fast removal while providing a secure hold

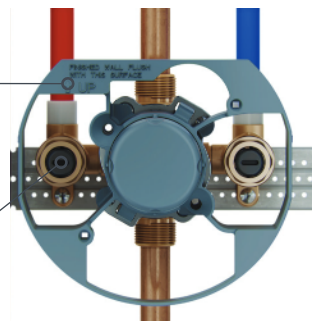
Two attachment points for thin-wall installations



Unique shaped plaster guard protects body, provides surface to use level and ease of tile work

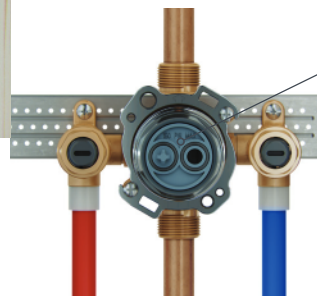
Valve body can be rotated 180 degrees for top-down installations with a few simple steps

Requires rotation of retention plate and plaster guard



Includes pressure test cap for air or water pressure testing

The innovative test plug can test mixed pressure, or isolate an inlet to test pressure or for system cross flow



Engineered with the experts in mind, the Treysta® tub & shower valve is **Gerber's most innovative valve yet.** Powered by 90 years of Gerber® performance, Treysta provides flexibility based on the specific requirements of each installation.

From the intuitive open and close stops for easy maintenance, to easy installation and pressure-testing features, **Treysta saves both time and money.** Fully compatible with Gerber tub & shower trim kits, Treysta helps you get the job done quickly and confidently – affording you the peace of mind backed by Gerber reliability.

## Features and Benefits

- **Revolutionary Vertical Inlets** – Treysta’s vertical inlets allow for maximum flexibility in the wall, and can install next to a stud in PEX applications without requiring re-framing
- **Easy Pressure Testing Capability** – Treysta® features an innovative pressure test cap to make the process of air and water testing easier to complete
- **Easy Installation and Access** – With an easy-access mounting system and integrated depth indexing features on the plaster guard, Treysta is engineered to install smoothly and quickly
- **Flexible and Adaptable for Different Environments** – Treysta has a solution for “with” and “without” stops, and accommodates back-to-back installations, reversed hot and cold inlets, as well as IPS/Sweat, Crimp PEX and Cold Expansion PEX
- **Secure and Level Mounting** – The body of the valve features integrated mounting holes for a firm and secure hold, and the flat plane of the plaster guard allows it to install level with the wall
- **Innovative Common Platform** – Treysta uses a common platform of pressure balance cartridge for all configurations, meaning that a single cartridge fits in all valve bodies
- **Fully Compatible with Gerber® Trim Kits with TC suffix** – These trim kits have been updated to include the Treysta pressure balance cartridge, which will ultimately minimize cartridge damage during rough-in installation

### Gerber Plumbing Fixtures

gerber-us.com 866.538.5536 U.S.  
gerber-ca.com 866.884.8841 Canada

## The Full Treysta® Collection



IPS/SWEAT



COLD EXPANSION PEX



CRIMP PEX

	IPS/SWEAT			COLD EXPANSION PEX			CRIMP PEX		
	Horizontal Inlets	Vertical Inlets	Integrated Diverter	Horizontal Inlets	Vertical Inlets	Integrated Diverter	Horizontal Inlets	Vertical Inlets	Integrated Diverter
Stops	G00GS505S	-	G00GS555S	G00GS507S	G00GS527S	G00GS557S	G00GS504S	G00GS525S	G00GS554S
Without Stops	G00GS505	-	-	G00GS507	G00GS527	-	G00GS504	G00GS525	-



WITH STUB-OUT

IPS/SWEAT

COLD EXPANSION PEX

CRIMP PEX

	IPS/SWEAT			COLD EXPANSION PEX			CRIMP PEX		
	Horizontal Inlets	Vertical Inlets	Integrated Diverter	Horizontal Inlets	Vertical Inlets	Integrated Diverter	Horizontal Inlets	Vertical Inlets	Integrated Diverter
Stops	G00GS505ST	-	-	G00GS507ST	-	-	G00GS504ST	-	-
Without Stops	G00GS505T	-	-	G00GS507T	-	-	G00GS504T	-	-

Horizontal Inlets



Vertical Inlets



Integrated Diverter



With Stub-Out



## Top-Down Installations Only:

1. Loosen screws ½ turn, DO NOT REMOVE SCREWS
2. Rotate retainer 180°. Be sure the arrow is pointing UP.
3. Secure retainer and tighten screws

